

O.D.O.T. DISTRICT 2 SURVEY OFFICE (USE ONLY)

PERSONNEL

REFERENCE NO. 32

SHEET 60 OF 63

NOTES RHOADES

DATE 6/11/19

ROUTE US 20A

H.C. O'DONNELL

WEATHER SUNNY

COUNTY FULTON

R.C. MILLER

TEMP. 62°

TOWNSHIP YORK

DWG BY BALBAUGH PID 101232

SECTION 17

T 7 N R 7 E

TYPE MONUMENT MAG/WASHER

ON SURFACE - ~~BELOW~~ ON

OFFSET ☐ PAVEMENT ON ~~LT~~ : ~~RT~~

13.1' TO RT EDGE PAVEMENT

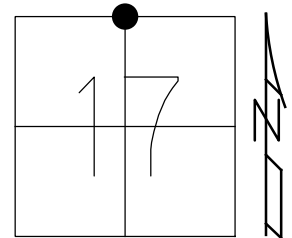
STATION: 822+36.27

HORZ.DATUM: NAD83 (2011)

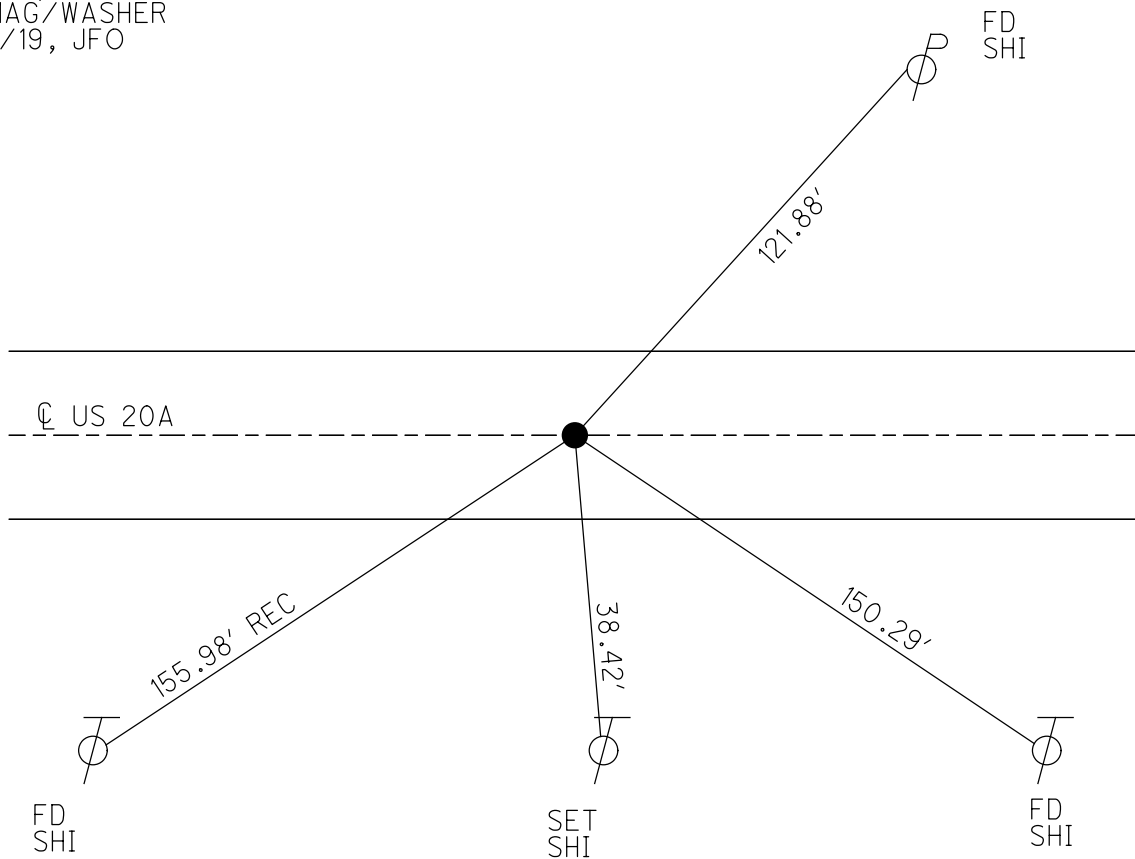
GEOID: 2012A

GRID: NORTHING: 698594.692

EASTING: 1534555.360



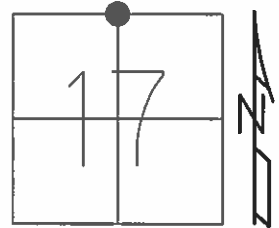
RECORD:  
 FD R.R.SPIKE  
 9/16/04, MC  
 SET MAG/WASHER  
 10/13/04, DCH  
 FD MAG/WASHER  
 12/5/17, JFO  
 REF32  
 12/21/17, JFO  
 SET MAG/WASHER  
 10/25/19, JFO



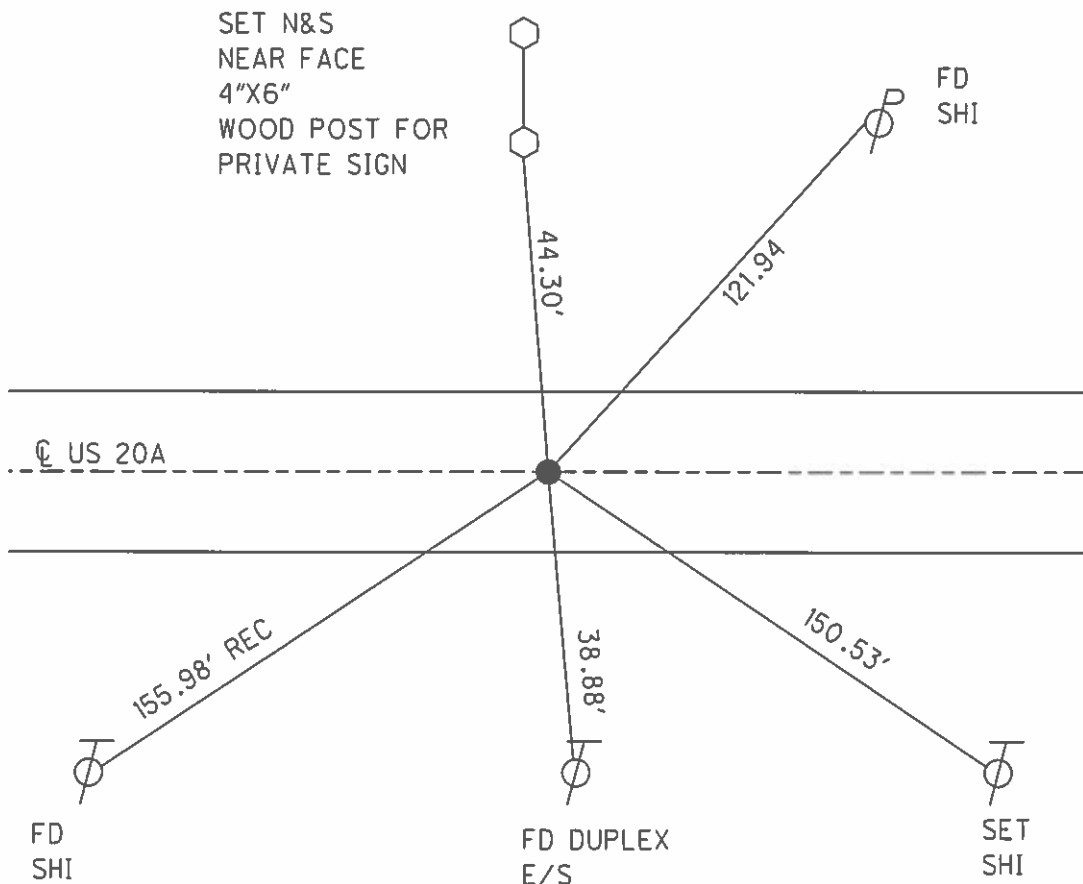
**O.D.O.T. DISTRICT 2 SURVEY OFFICE (USE ONLY)**

PERSONNEL \_\_\_\_\_ REFERENCE NO. 32 SHEET 58 OF 61  
 NOTES HOMAN DATE 9/16/04 ROUTE US 20A  
 H.C. CANTERBURY WEATHER CLOUDY COUNTY FULTON  
 R.C. BARNHISEL TEMP. 70° TOWNSHIP YORK  
 \_\_\_\_\_ SECTION 17  
 \_\_\_\_\_ T 7 N R 7 E

TYPE MONUMENT R.R.SPIKE  
 ON SURFACE - ~~BELOW~~ ON \_\_\_\_\_  
 LEFT - ☉ PAV'T - RIGHT ON \_\_\_\_\_  
13.1' TO RT EDGE PAVEMENT  
 S.L.M. 822+42  
 GRID: NORTHING: \_\_\_\_\_ EASTING: \_\_\_\_\_



SET MAG/WASHER  
 10-13-04, DCH



# O.D.O.T. DISTRICT 2 SURVEY OFFICE

PERSONNEL

REFERENCE NO. 32

SHEET 9 OF 24

NOTES I. Stone

H.C. D. Curtis

DATE 16 Sept. 86

ROUTE US #20-A

R.C. J. Householder

WEATHER Cool

COUNTY Fulton

TEMP. 58°

TOWNSHIP York

SECTION 17

T     R    

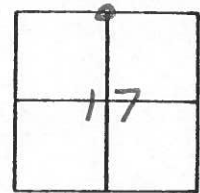
TYPE MONUMENT 1" I. pipe

ON SURFACE - BELOW 2" deep

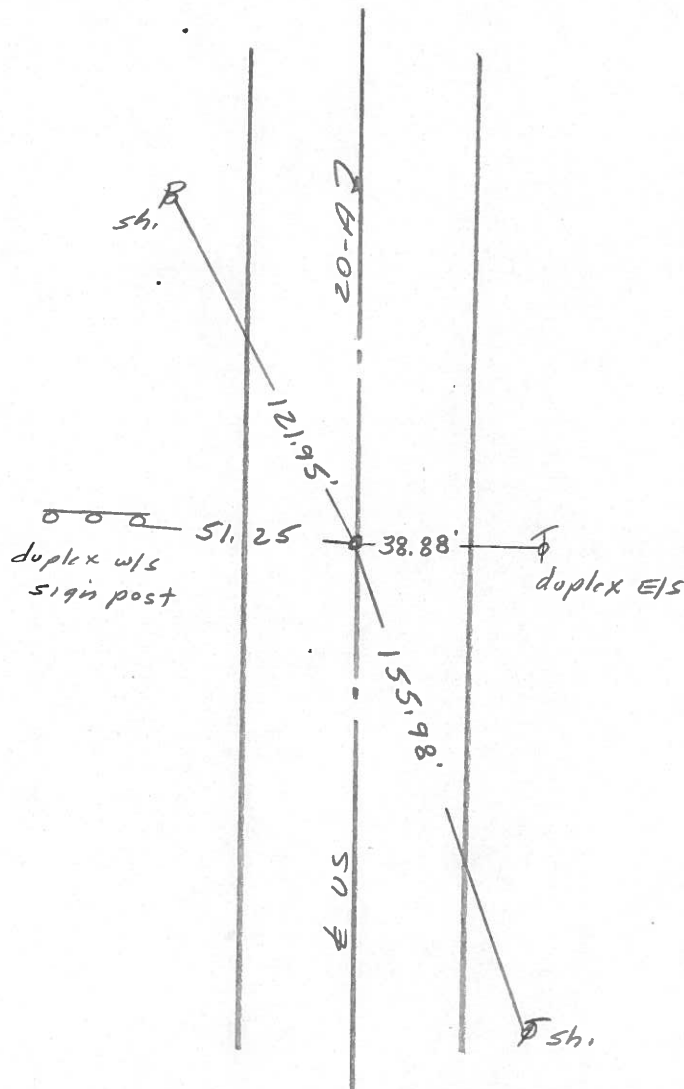
LEFT- & PAV'T. - RIGHT    

    TO     EDGE PAVEMENT

S.L.M. 822 + 84



SET SMALL R.B. SPK. TO SURFACE  
4-29-88



County Fulton S.R. 2 & US 20A

Date 6-5-1980

OK 10-15-80

Township York

Weather Clear

Section N $\frac{1}{4}$  Sec. 17

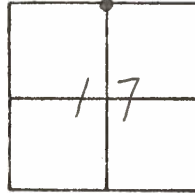
Temp. +80°

T7N, R7E

Personnel Smith

Bowers

Mead

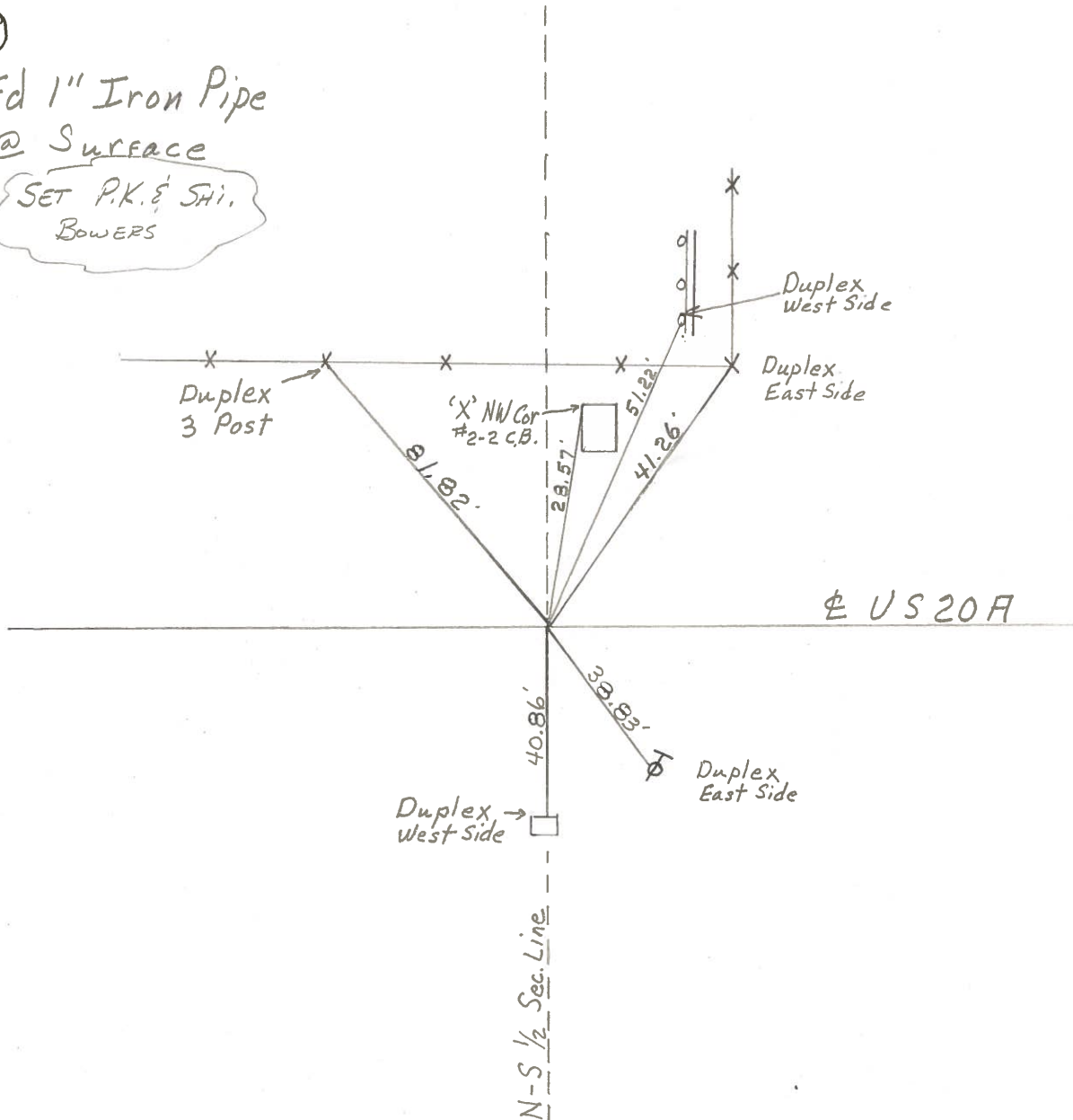


(32)

Fd 1" Iron Pipe

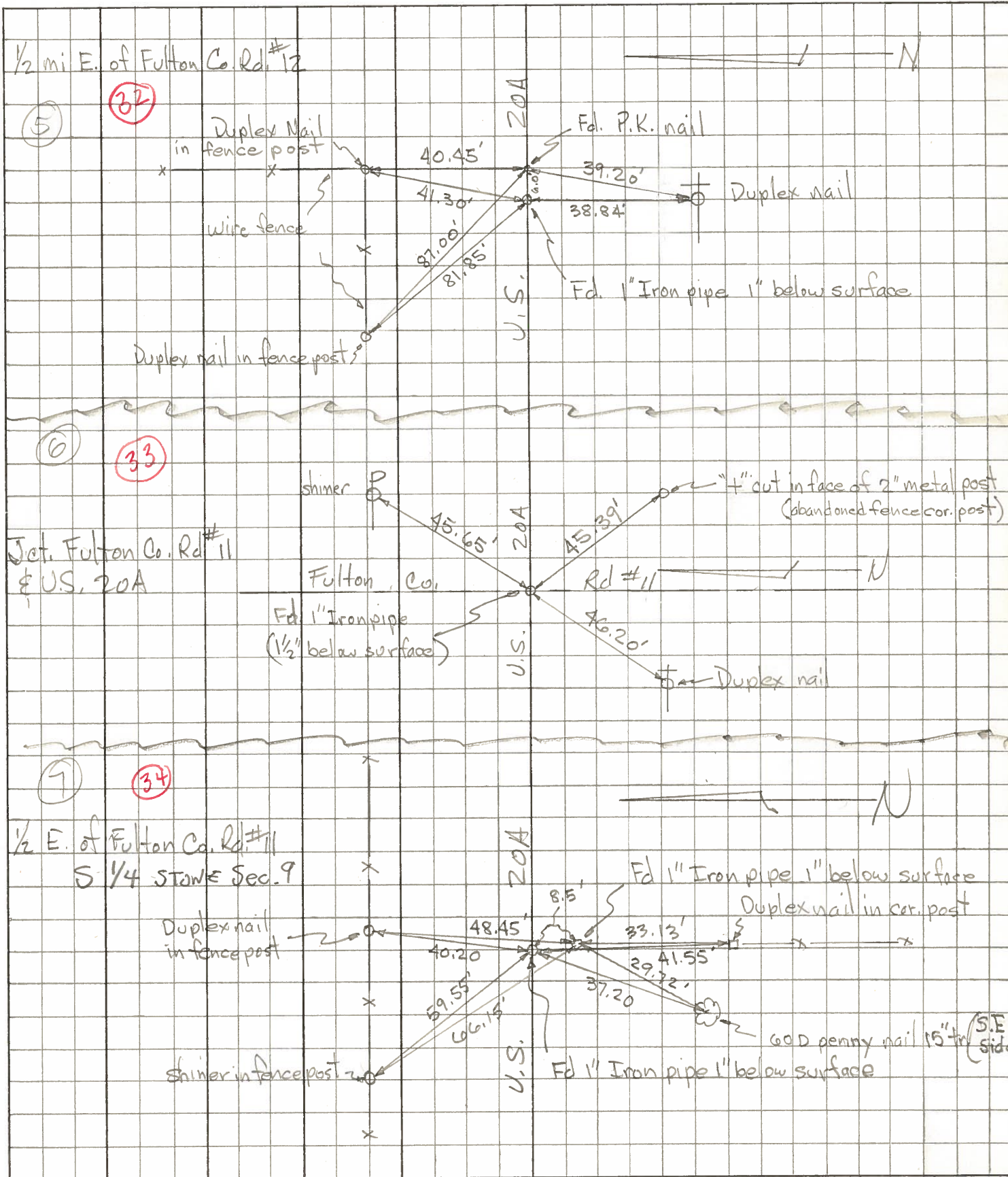
@ Surface

SET P.K. & SHI.  
BOWERS



PERSONNEL	TITLE	PERSONNEL	TITLE	COUNTY	DATE	WEATHER	TEMP.
Tomsic				Fulton	April 18, 1973		
Neuser				U.S. 20A			
Granata							
Vanyo							

DESCRIPTION \_\_\_\_\_ LEFT \_\_\_\_\_ CENTER LINE \_\_\_\_\_ RIGHT \_\_\_\_\_ JOB NO. \_\_\_\_\_

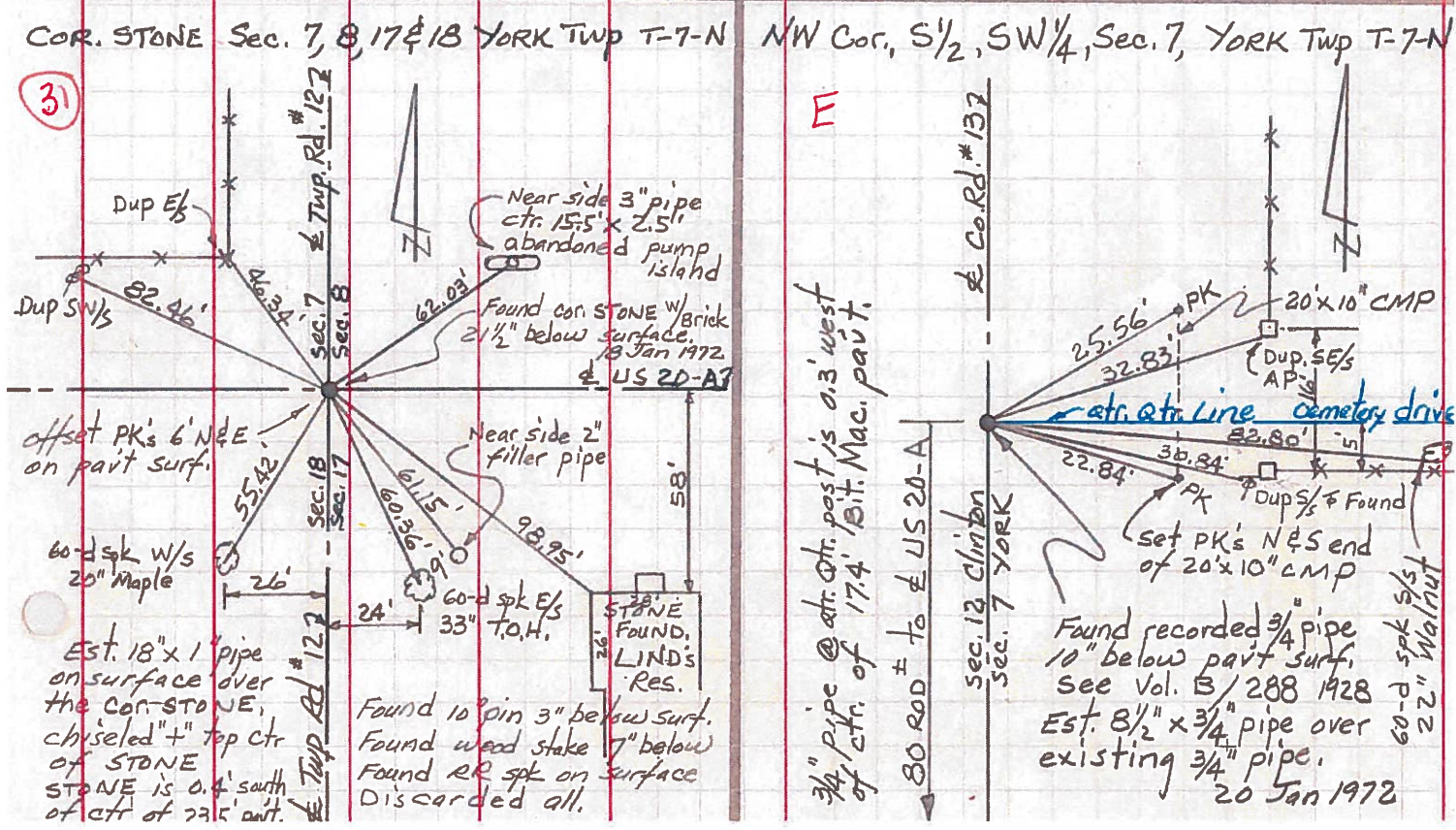
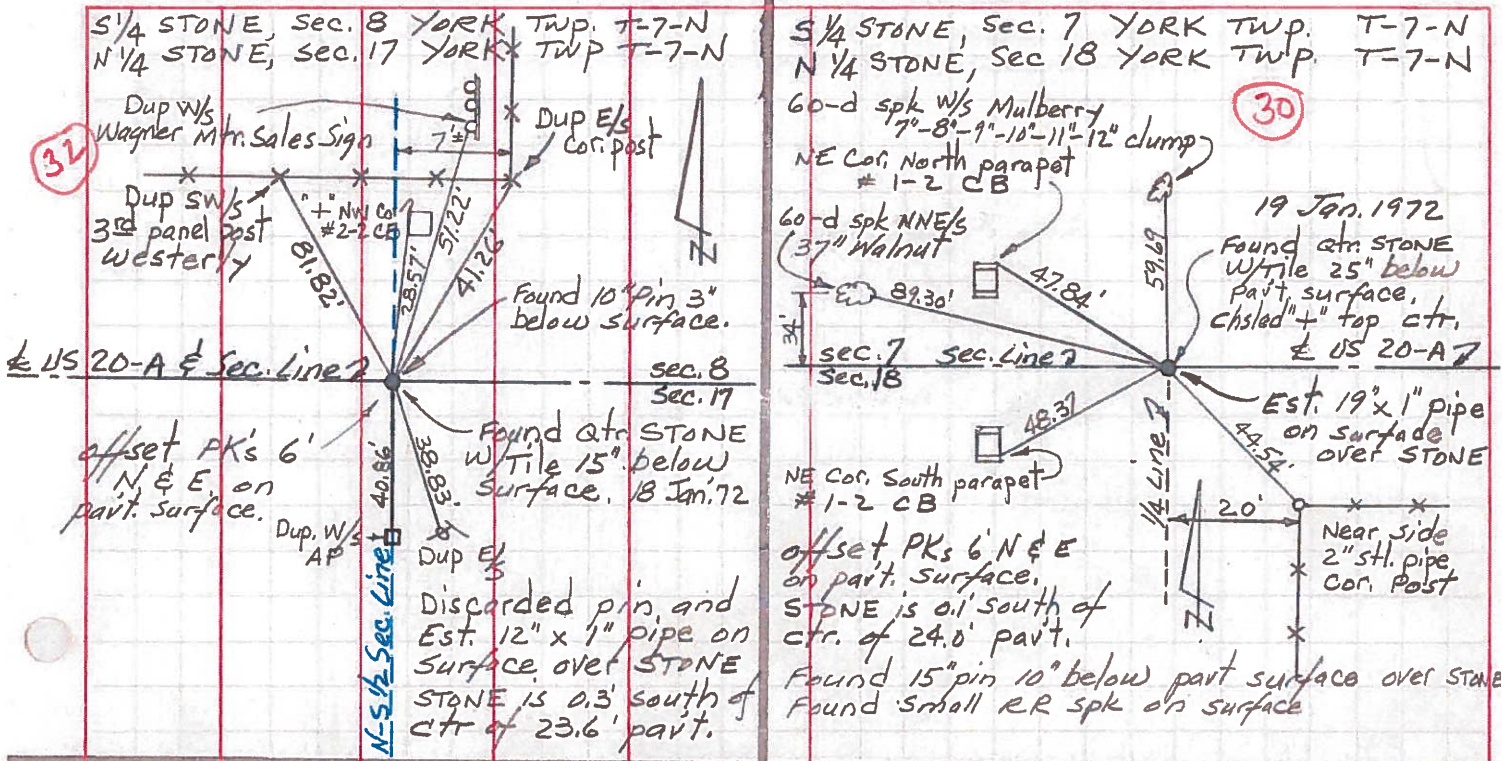




PERSONNEL TITLE PERSONNEL TITLE COUNTY Fulton DATE Jan 1972  
Red Beach \_\_\_\_\_  
Newcomb \_\_\_\_\_ S. R. US 20-A WEATHER \_\_\_\_\_  
Knape \_\_\_\_\_  
Eriksen \_\_\_\_\_ SEC. YORK TWP TEMP. \_\_\_\_\_

CONTROL POINTS

DESCRIPTION LEFT CENTER LINE RIGHT JOB NO.





PERSONNEL TITLE PERSONNEL TITLE

COUNTY Fulton DATE 3-28-55

S. R. #2 & 20 Alt. WEATHER 9-12-60

SEC. M, A, O, TEMP.

DESCRIPTION LEFT CENTER LINE RIGHT JOB NO.

DESCRIPTION	LEFT	CENTER LINE	RIGHT	JOB NO.
P.I. Sta. 53+62.34 S.W. cor. sec. 7 Fd. iron pin 12" below surface of pav't. (Not plum bed)			SE. to shiner in T.P. 45.35' S.W. to shiner in A. Post 46.90' S.W. to shiner in T.P. 102.25' N.W. to shiner in 24" Elm 171.45' N.E. to shiner in 20" Hickory 51.05'	
	#72 ✓			
Sta. 79+78.58 S. 1/4 sec. 7 Fd. iron pin			N.W. to shiner in 30" walnut 87.25' S.W. to shiner in T.P. 59.60 S.E. to iron A.P. 1' above gnd. 44.30' N.E. to shi. in 24" Spruce N.E. 97.15'	
	#73 ✓			
Sta. 106+08.39 S.W. cor. sec. 8 Iron pin			N.E. to iron post in pump island 62.09' N.W. to shiner in P.P. 81.90' S.W. to shiner in 12" maple 54.83 S.E. to shiner in 30" catalpa 59.70'	
	#74 ✓			
Sta. 132+68.17 S. 1/4 sec. 8 Fd. iron pin			N.N.E. to steel sign post stake 40.47 N.N.E. to shiner in P.P. 40.94 40.88 N.W. to shiner in 3rd fence post 54.35 S. to shiner in T.P. 38.25	
	#75			
Sta. 159+27.37 S.W. cor. sec 9 Fd. iron pin			S.W. to shiner in T.P. 44.20' N.E. to shiner in P.P. 45.67 S.E. to near side of Gov. B.M. 56.97 N.W. to near side of iron A.P. 44.80'	
	#76			