

O.D.O.T. DISTRICT 2 SURVEY OFFICE (USE ONLY)

PERSONNEL

REFERENCE NO. 34 A

SHEET 63 OF 63

NOTES RHOADES DATE 6/11/19  
H.C. O'DONNELL WEATHER SUNNY  
R.C. MILLER TEMP. 62°

ROUTE US 20A  
COUNTY FULTON  
TOWNSHIP YORK  
SECTION 16  
T 7 N R 7 E

DWG BY BALBAUGH PID 101232

TYPE MONUMENT MAG/WASHER

ON SURFACE - ~~BELOW~~ ON \_\_\_\_\_

OFFSET  $\odot$  PAVEMENT 8.0' ~~±~~ : RT

5.5' TO RT EDGE PAVEMENT

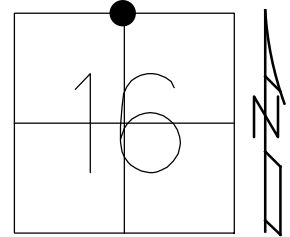
STATION: 875+47.98

HORZ.DATUM: NAD83 (2011)

GEOID: 2012A

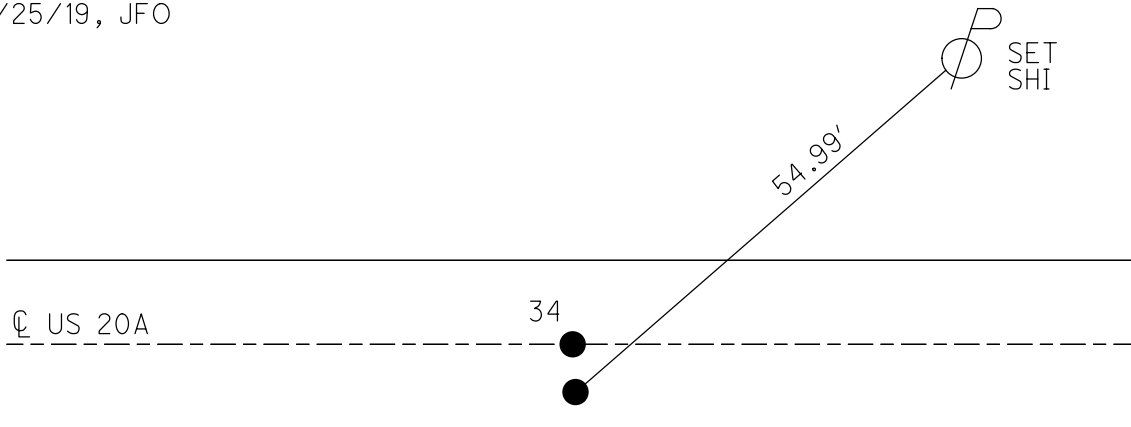
GRID: NORTHING: 698495.795

EASTING: 1539866.130



RECORD:  
FD P.K.NAIL  
9/16/04, MC  
SET MAG/WASHER  
10/13/04, DCH  
FD MAG/WASHER  
12/5/17, JFO  
REFA34  
12/21/17, JFO  
SET MAG/WASHER  
10/25/19, JFO

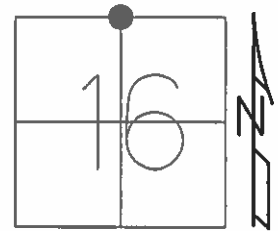
DIST. 34-34A=8.62'



O.D.O.T. DISTRICT 2 SURVEY OFFICE (USE ONLY)

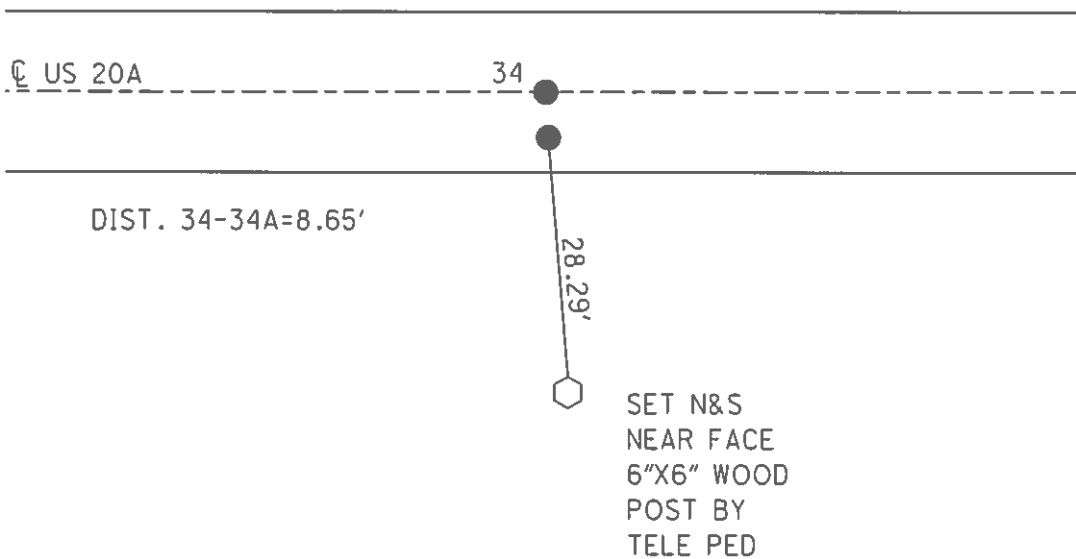
PERSONNEL \_\_\_\_\_ REFERENCE NO. 34 A SHEET 61 OF 61  
NOTES HOMAN DATE 9/16/04 ROUTE US 20A  
H.C. CANTERBURY WEATHER CLOUDY COUNTY FULTON  
R.C. BARNHISEL TEMP. 70° TOWNSHIP YORK  
SECTION 16  
T 7 N R 7 E

TYPE MONUMENT P.K.NAIL  
ON SURFACE - ~~BELOW~~ ON \_\_\_\_\_  
LEFT - ☉ PAV'T - RIGHT 8.0'  
5.5' TO RT EDGE PAVEMENT  
S.L.M. 875+64



GRID: NORTHING: \_\_\_\_\_ EASTING: \_\_\_\_\_

SET MAG/WASHER  
10-13-04, DCH



O.D.O.T. DISTRICT 2 SURVEY OFFICE

PERSONNEL

REFERENCE NO. 34

SHEET 7 OF 7

NOTES HOMAN

DATE 9-16-04

ROUTE U.S. 20-A

H.C. CANTERBURY

WEATHER CLOUDY

COUNTY FULTON

R.C. BARNHISEL

TEMP. 70°

TOWNSHIP YORK

SECTION 16

T 7 N R 7 E

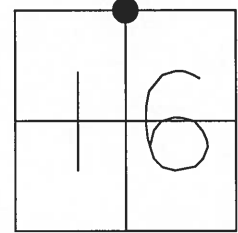
TYPE MONUMENT PK NAIL

ON SURFACE ~~BELOW~~ YES

LEFT - Q PAV'T - RIGHT A 0.6' LT B 8.0' RT

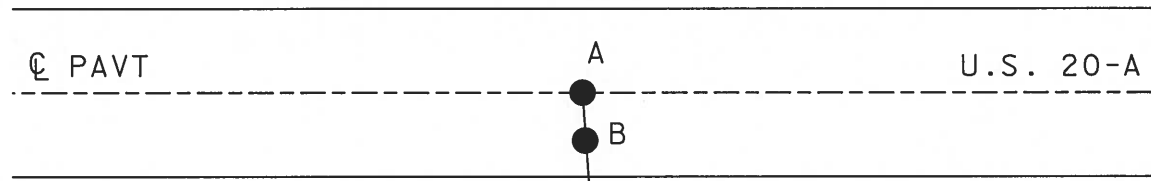
TO EDGE PAVEMENT A 14.0' RT B 5.5' RT

S.L.M. 875+63 A, 875+64B



DIST A-B=8.65'

SET MAG NAIL  
& WASHER  
AT BOTH  
LOCATIONS  
10-13-04  
DCH



A=36.92'  
B=28.29'

SET N&S  
NEAR FACE  
6"X6" WOOD  
POST BY  
TELE PED



OK-10-16-80

County Fulton S.R. 2 # US20A

Date 6-6-1980

Township York

Weather Clear

Section N<sup>1</sup>/<sub>4</sub> Sec. 16

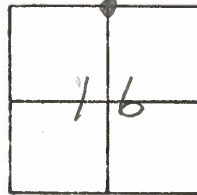
Temp. +82°

TZN, RZE

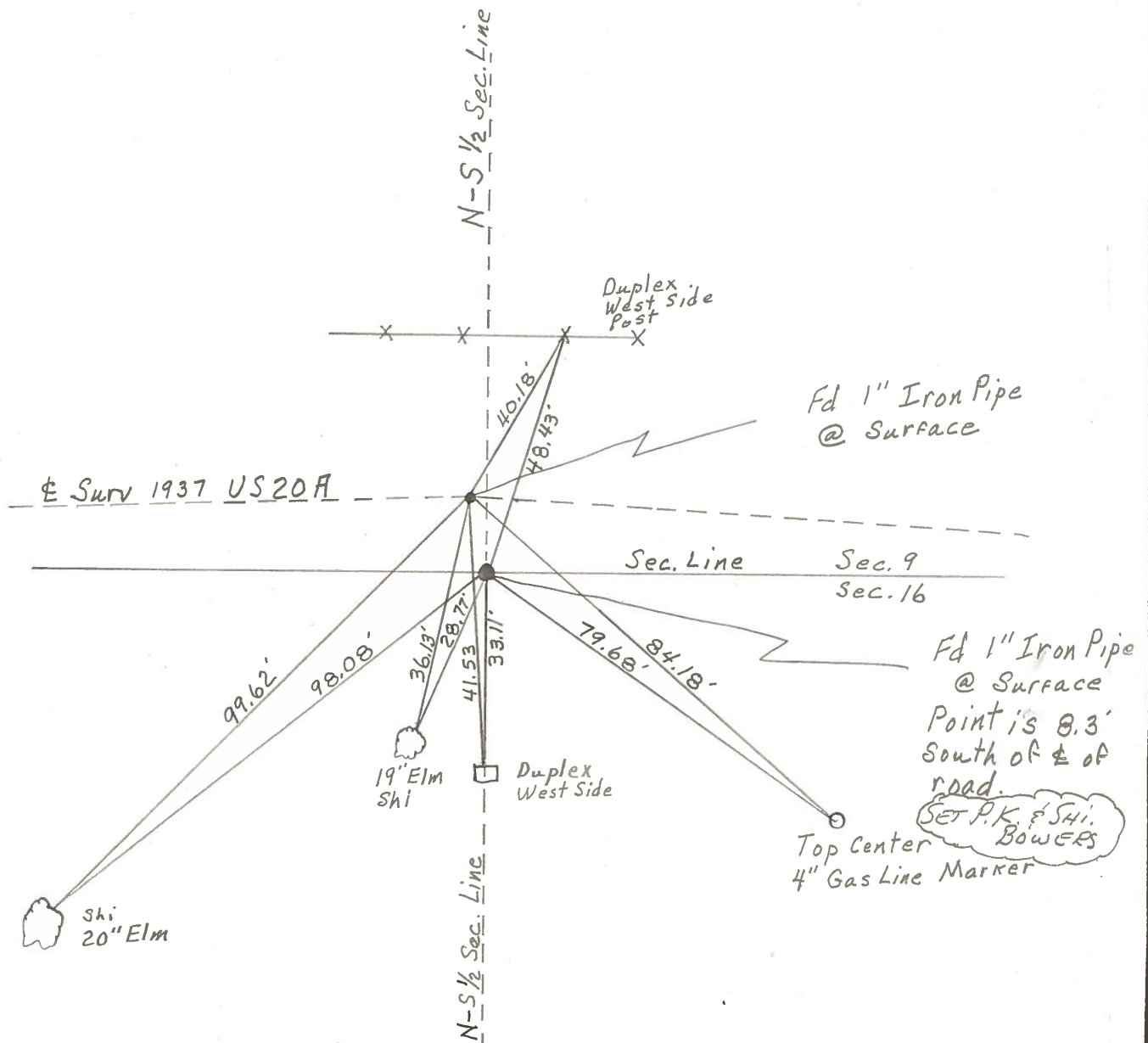
Personnel Smith

Bowers

Mead

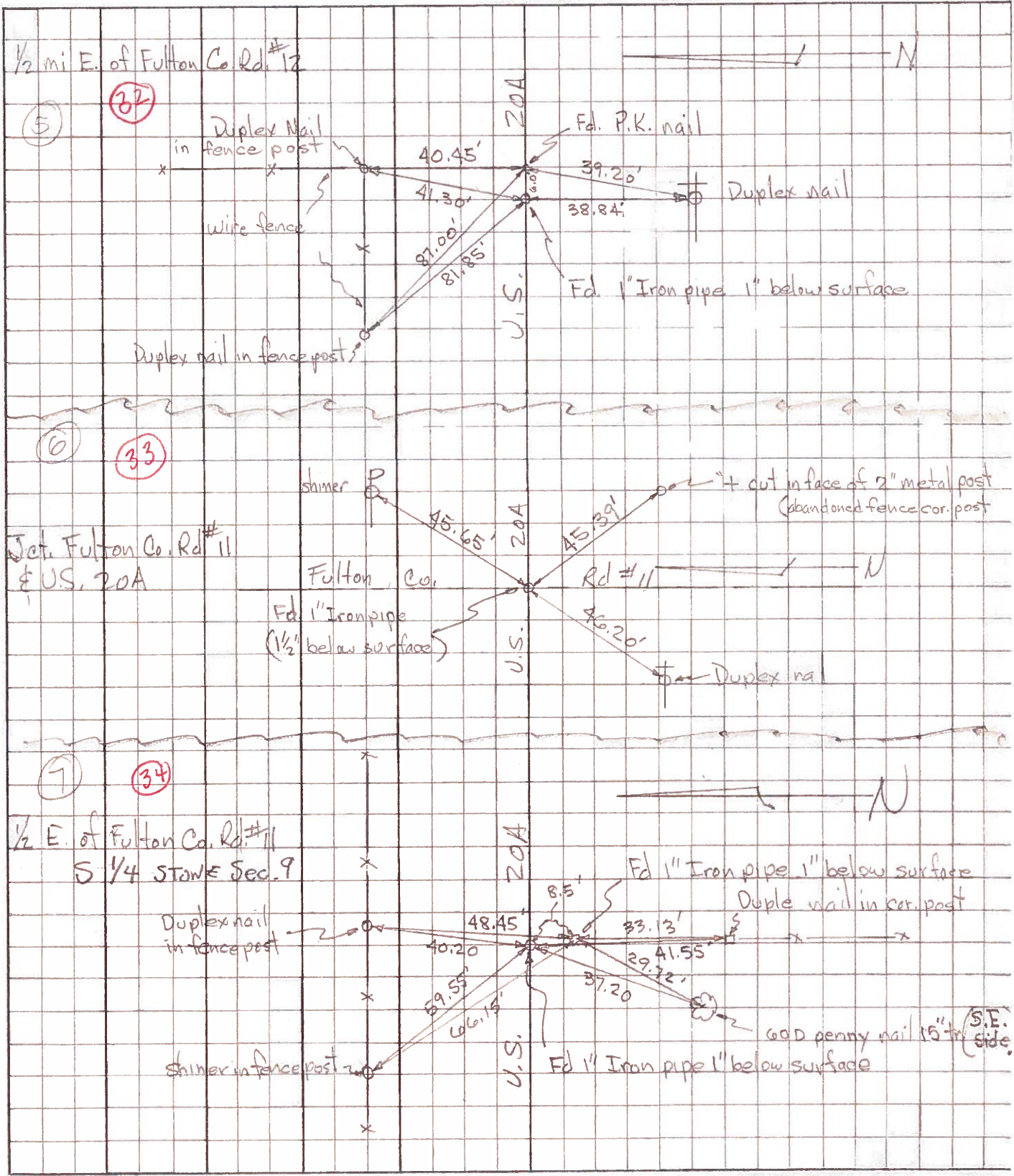


(34)



PERSONNEL	TITLE	PERSONNEL	TITLE	COUNTY	<u>Fulton</u>	DATE	<u>April 18, 1913</u>
<u>Tomsic</u>				S. R.	<u>U.S. 20A</u>	WEATHER	
<u>Neuser</u>				SEC.		TEMP.	
<u>Granata</u>							
<u>Vanyo</u>							

DESCRIPTION \_\_\_\_\_ LEFT \_\_\_\_\_ CENTER LINE \_\_\_\_\_ RIGHT \_\_\_\_\_ JOB NO. \_\_\_\_\_





PERSONNEL TITLE PERSONNEL TITLE

Red Beach  
Newcomb  
Knappe

COUNTY Fulton DATE Dec. 1971

S. R. US 20-A WEATHER \_\_\_\_\_

SEC. YORK TWP T-7-N TEMP. \_\_\_\_\_

DESCRIPTION CONTROL POINTS JOB NO.

