

O.D.O.T. DISTRICT 2 SURVEY OFFICE (USE ONLY)

PERSONNEL

REFERENCE NO. 36

SHEET 3 OF 6

NOTES RHOADES

DATE 6/13/19

ROUTE US 20A

H.C. O'DONNELL

WEATHER CLOUDY

COUNTY FULTON

R.C. MILLER

TEMP. 60°

TOWNSHIP YORK

SECTION 15

DWG BY BALBAUGH PID 101232

T 7 N R 7 E

TYPE MONUMENT P.K.NAIL

ON SURFACE - ~~BELOW~~ ON

OFFSET ☐ PAVEMENT ON ± : ±

 TO EDGE PAVEMENT

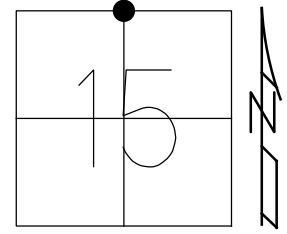
STATION: 928+42.66

HORIZ.DATUM: NAD83 (2011)

GEOID: 2012A

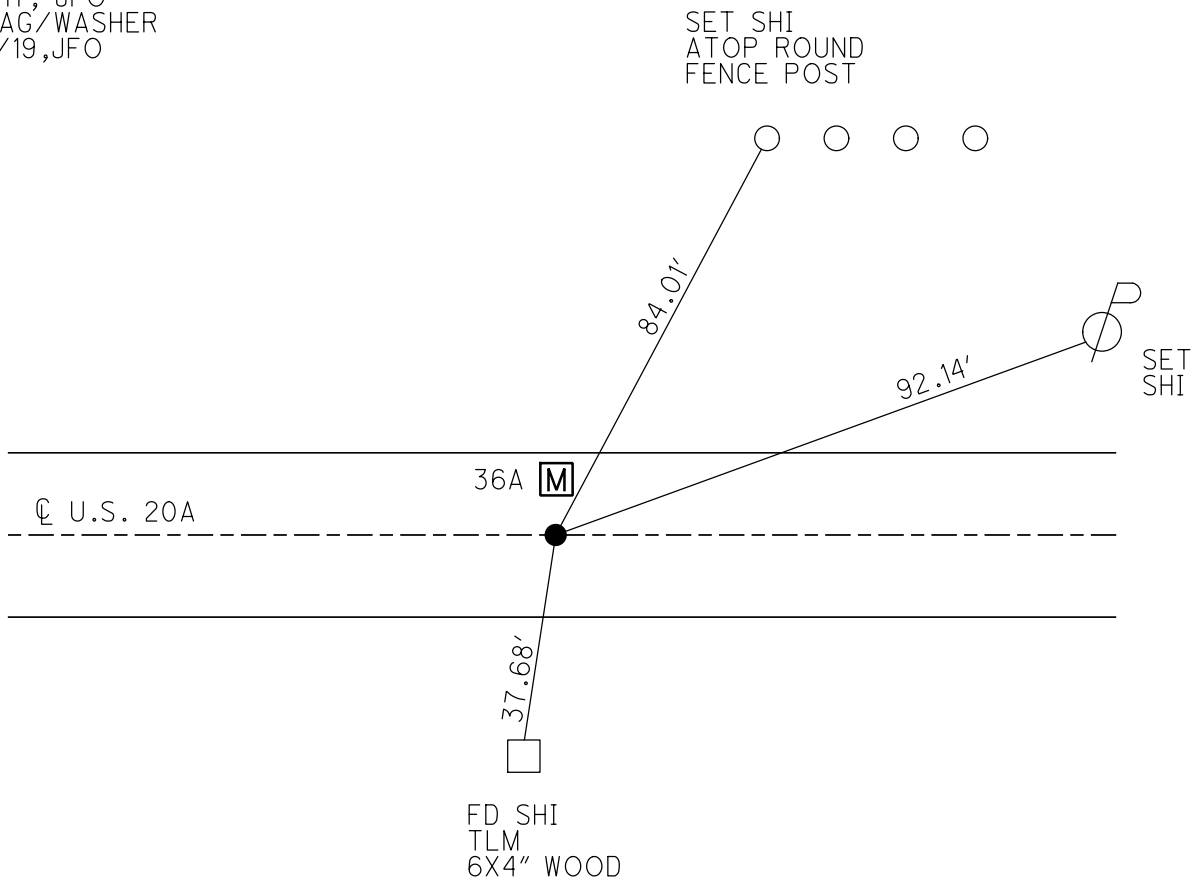
GRID: NORTHING: 698431.237

EASTING: 1545160.363



RECORD:
FD P.K./WASHER
9/3/98, CL
FD P.K.NAIL
4" DOWN
REF36
12/21/17, JFO
SET MAG/WASHER
10/25/19, JFO

NOTE:
DIST. 36-36A = 11.88'



O.D.O.T. DISTRICT 2 SURVEY OFFICE

PERSONNEL

REFERENCE NO. 36

SHEET 2 OF 3

NOTES LOHRKE

H.C. Cordes

DATE 9-3-98

ROUTE US 20-A

R.C.

WEATHER FAIR

COUNTY FULTON

TEMP. +18°C

TOWNSHIP YORK

SECTION 3/4 Corner of 10

T. 7 N. R. 7 E

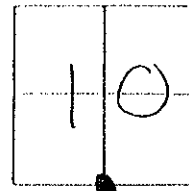
TYPE MONUMENT P.K. NAIL & WASHER Survey & R/W

ON SURFACE - BELOW Yes

~~FEET~~ - & PAW'T. - RIGHT Yes

TO EDGE PAVEMENT

S.L.M. 28+308.99



CONC. Drive

Drillhole
B" from East
and South Edges

Drillhole
SW Corner

CONC. PAD
Utilities
Boxes

A CoC = 19.986m

PLAN Sta. 28+308.940

See NOTE Lower Left.

MAN BOX
SEC. Corner

US 20-A

Survey & R/W

PLAN Sta 28+308.985

29.750m

26.334m

Survey and R/W

NOTE: B = Man Box Installed 9-3-98
 Fd 1 1/2" PIPE OVER STONE: Reset PIPE in it's ORIGINAL
 Position As Rod INSIDE Box; NOTE PIPE is
 0.06 feet East of and ± 0.06 ft South of the
 Stone. SAID PIPE & P.K. NAIL correspond to
 & PLAT of PLAN; FUL-20A-(27.25)(28.869)

York Township

PRINTED B LACK "+"
 Near face Round Steel
 fence Post.

O.D.O.T. DISTRICT 2 SURVEY OFFICE

PERSONNEL

REFERENCE NO. 36

SHEET 13 OF 24

NOTES 1. Stone

H.C. D. Curtis

DATE 17 Sept. 86

ROUTE US #20-A

R.C. J. Householder

WEATHER Cool

COUNTY Fulton

TEMP. 56°

TOWNSHIP York

SECTION 15

T R

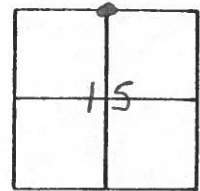
TYPE MONUMENT PK Nails

ON SURFACE - BELOW Surface

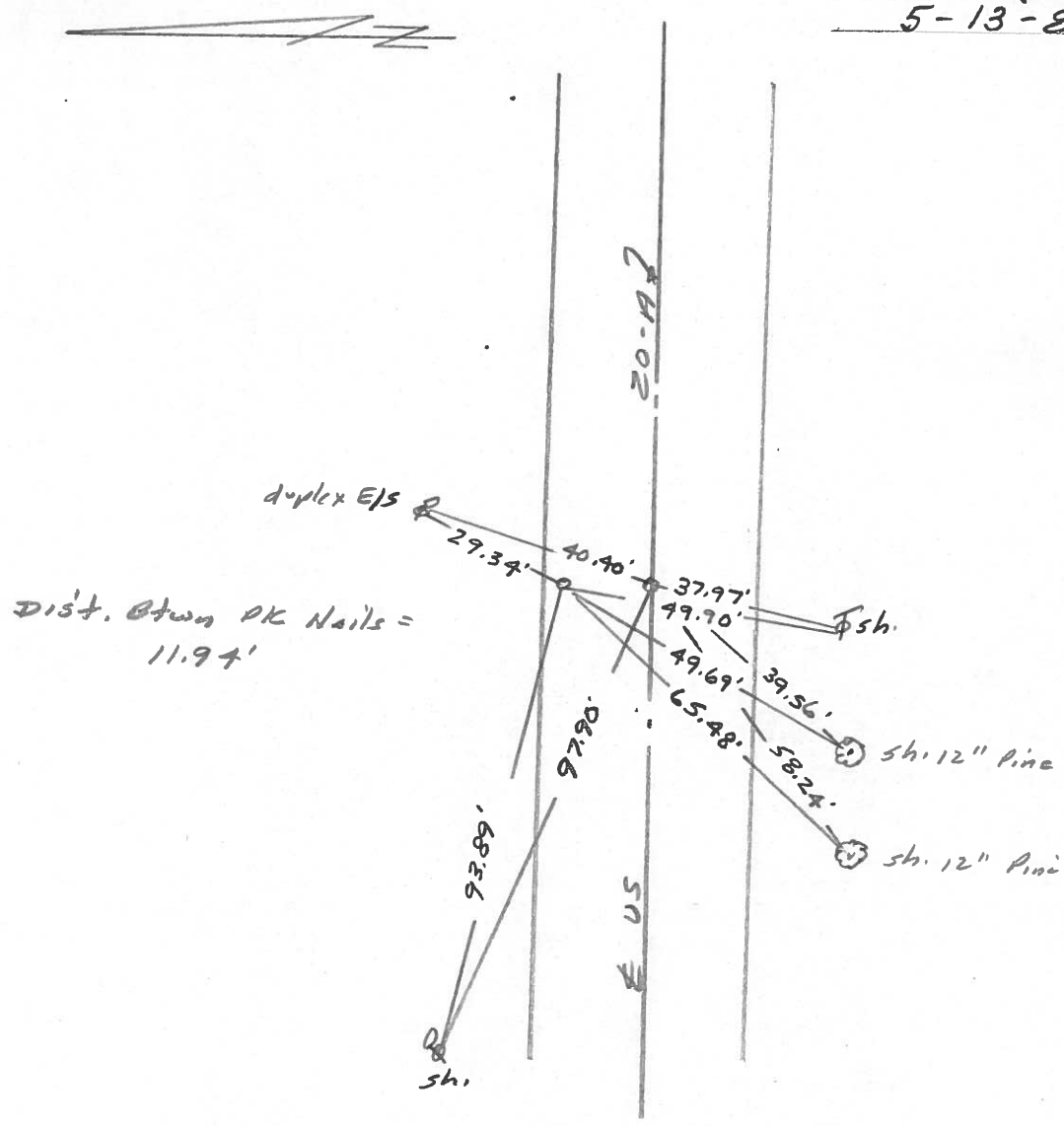
LEFT- & PAV'T. - RIGHT

 TO EDGE PAVEMENT

S.L.M. 928+90



SET P.K. NAILS TO SURFACE
5-13-88



County Fulton S.R. 2 & US20A

Date OK-10-16-80
6-6-1980

Township York

Weather Clear

Section N 1/4 Cor. Sec. 15

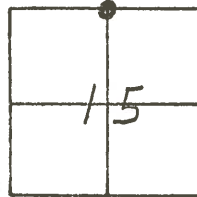
Temp. + 82°

TZN, RZE

Personnel Smith

Bowers

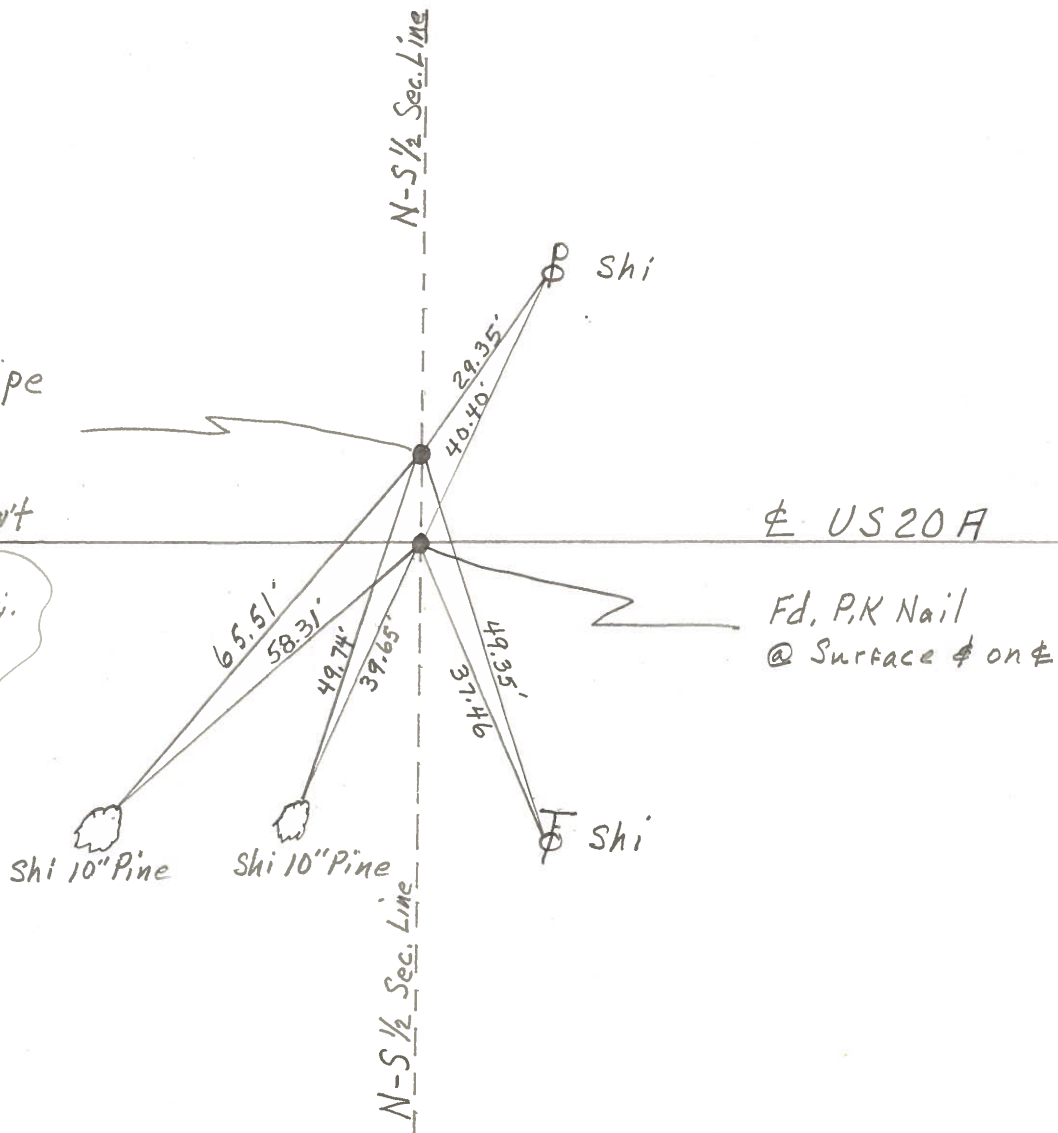
Mead



36

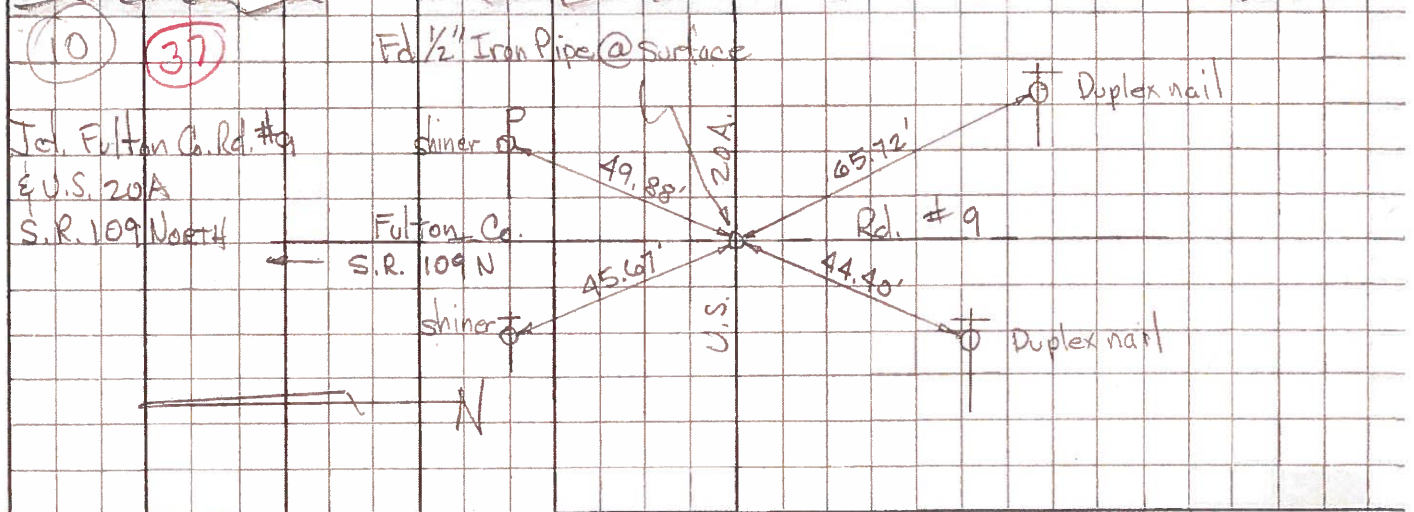
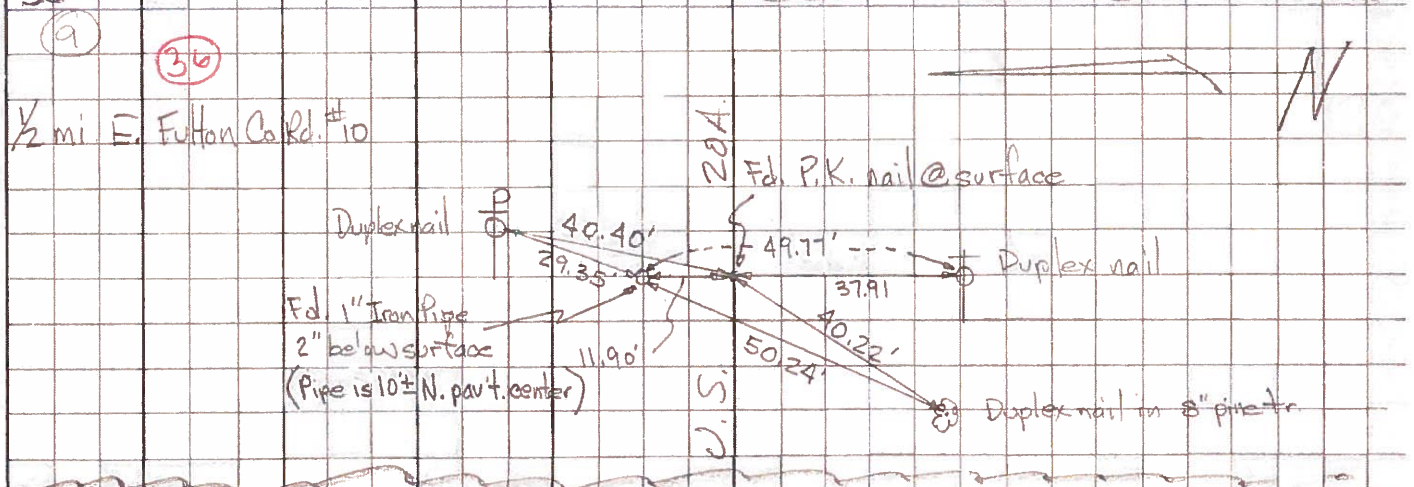
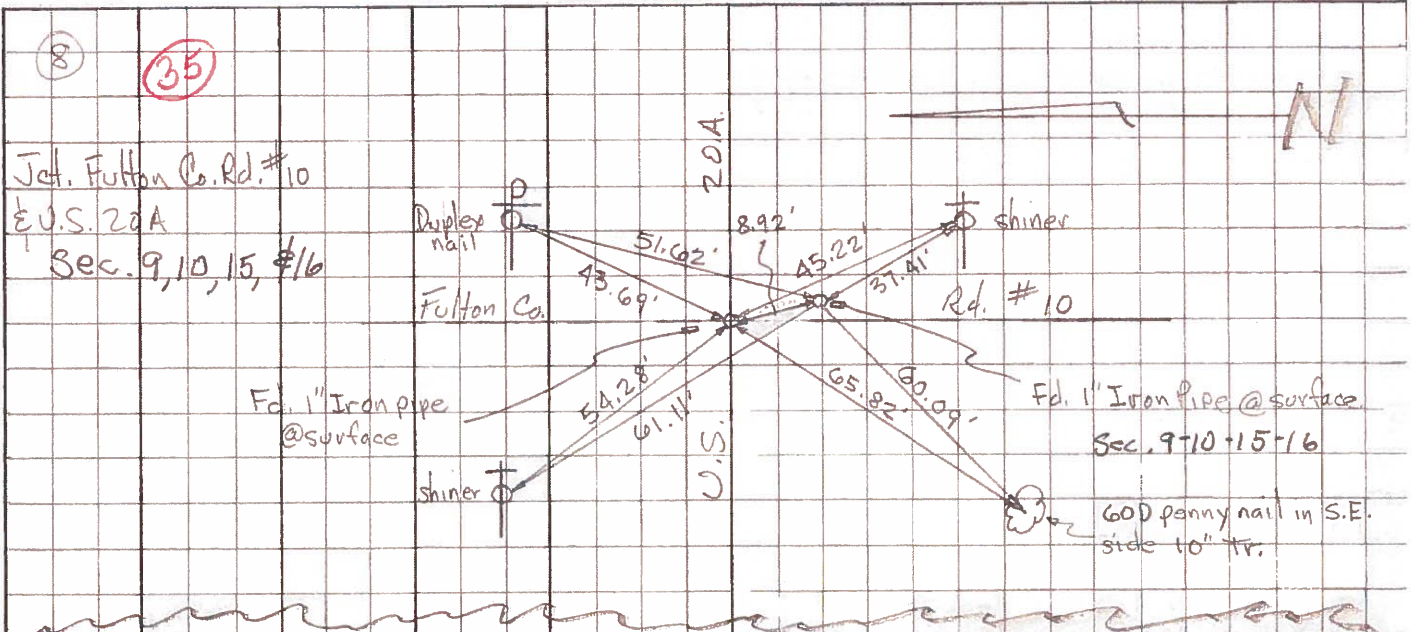
Fd 1" Iron Pipe
@ Surface
Pipe is 10'±
North of ~~E~~ Part

SET P.K. & Shi.
BOWERS



| PERSONNEL | TITLE | PERSONNEL | TITLE | COUNTY | DATE | WEATHER | TEMP. |
|-----------|-------|-----------|-------|---------------|----------------|---------|-------|
| Tomsic | | | | Fulton | April 19, 1973 | | |
| Weuser | | | | S. R. US. 20A | | | |
| Granata | | | | | | | |
| Vauyo | | | | | | | |

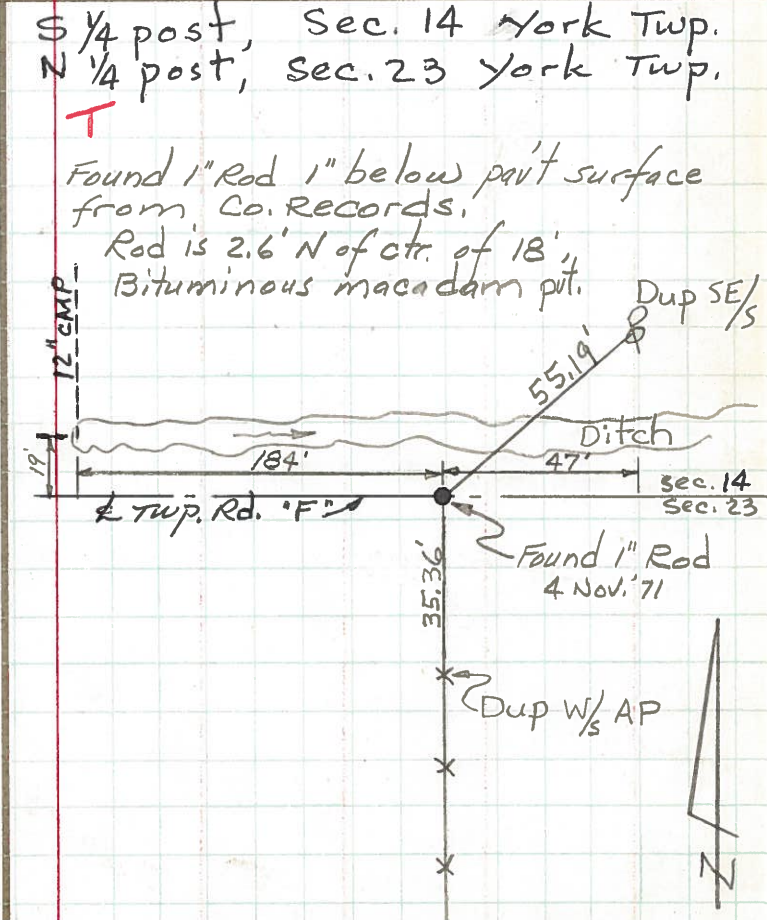
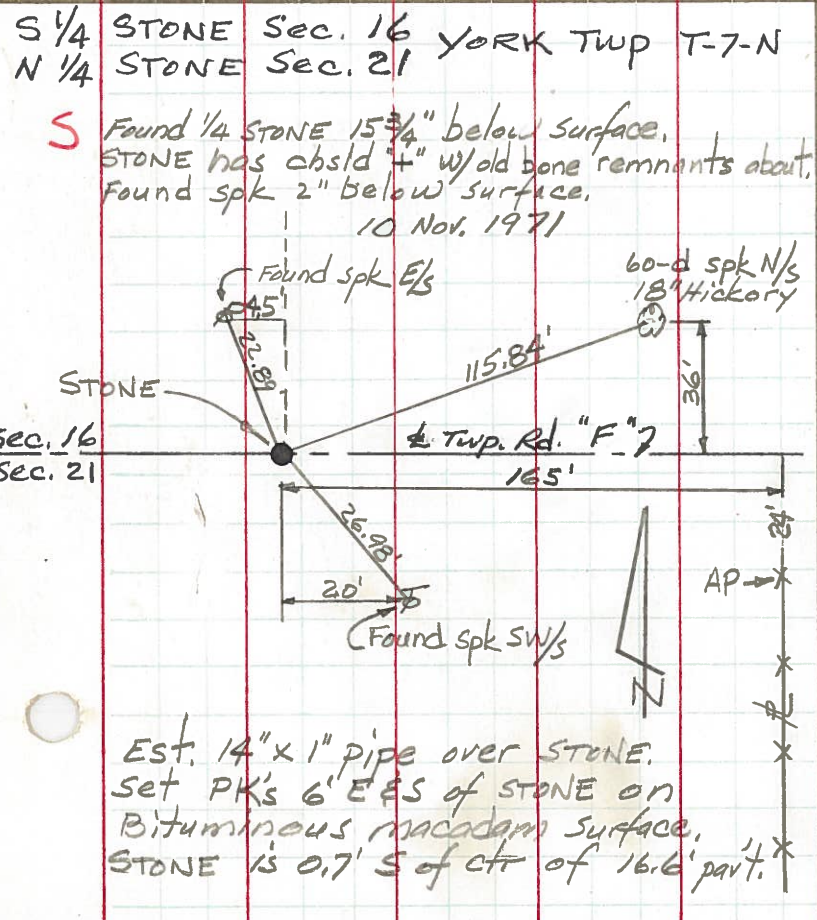
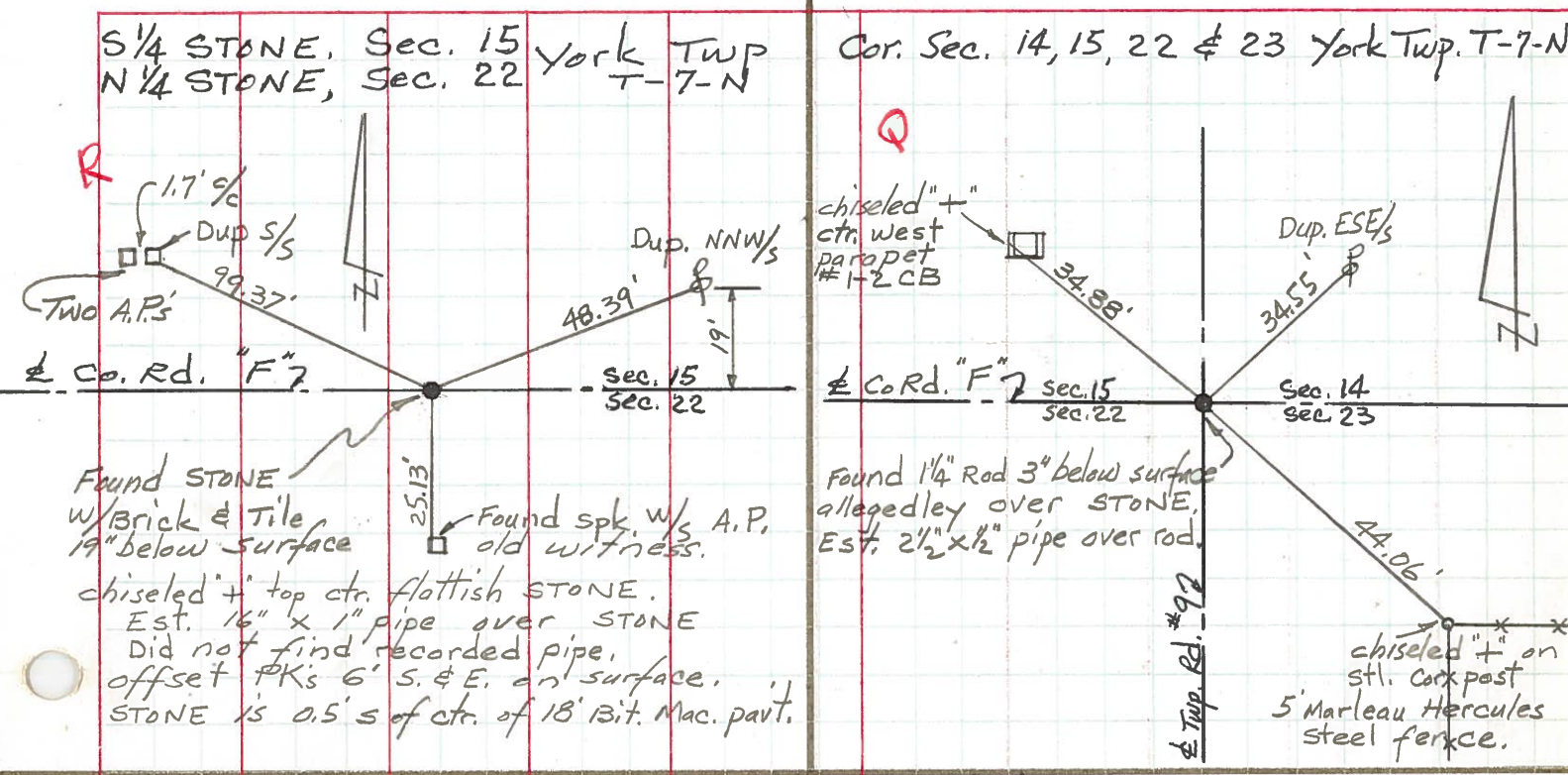
DESCRIPTION _____ LEFT _____ CENTER LINE _____ RIGHT _____ JOB NO. _____



PERSONNEL TITLE PERSONNEL TITLE
 Red Beach /
 Newcomb
 Knappe
 Wise

COUNTY Fulton DATE Sept. 1971
 S. R. US 20-A WEATHER _____
 SEC. York Twp. TEMP. _____

DESCRIPTION CONTROL POINTS JOB NO. _____



PERSONNEL TITLE PERSONNEL TITLE

COUNTY Fulton

DATE OK-1-24-58

S. R. #20 Alt.

WEATHER

SEC.

TEMP.

DESCRIPTION

LEFT

CENTER LINE

RIGHT

JOB NO.

Point on & West Wabash
Sta. 65+89.5
E.P. spike

#112-A

Sec. 1/4 cor 1 1/2 mile E.
Sta. 79+03.4
Mon.
N 1/4 Sec. 15

(36)

#113

Sta. 95+51.5
3/4" Gas pipe on &
E.P. spike
NW 1/4 of NE 1/4 Sec. 15

#113-A

Sec. Cor. 2 mile E.
Sta. 105+33.05
Stone - Mon.
NW Cor. Sec. 15

(37)

#114

