

O.D.O.T. DISTRICT 2 SURVEY OFFICE (USE ONLY)

PERSONNEL

REFERENCE NO. 36 A

SHEET 4 OF 6

NOTES RHOADES
 H.C. O'DONNELL
 R.C. MILLER

DATE 6/13/19
 WEATHER CLOUDY
 TEMP. 60°

ROUTE US 20A
 COUNTY FULTON
 TOWNSHIP YORK
 SECTION 15
 T 7 N R 7 E

DWG BY BALBAUGH PID 101232

TYPE MONUMENT MONBOX W/ 1 1/2" IPIPE

ON SURFACE - ~~BELOW~~ ON

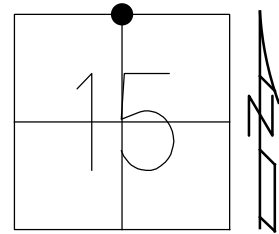
OFFSET C PAVEMENT $\pm 11.88'$ ~~RT~~ : RT

TO EDGE PAVEMENT

STATION: 928+42.66

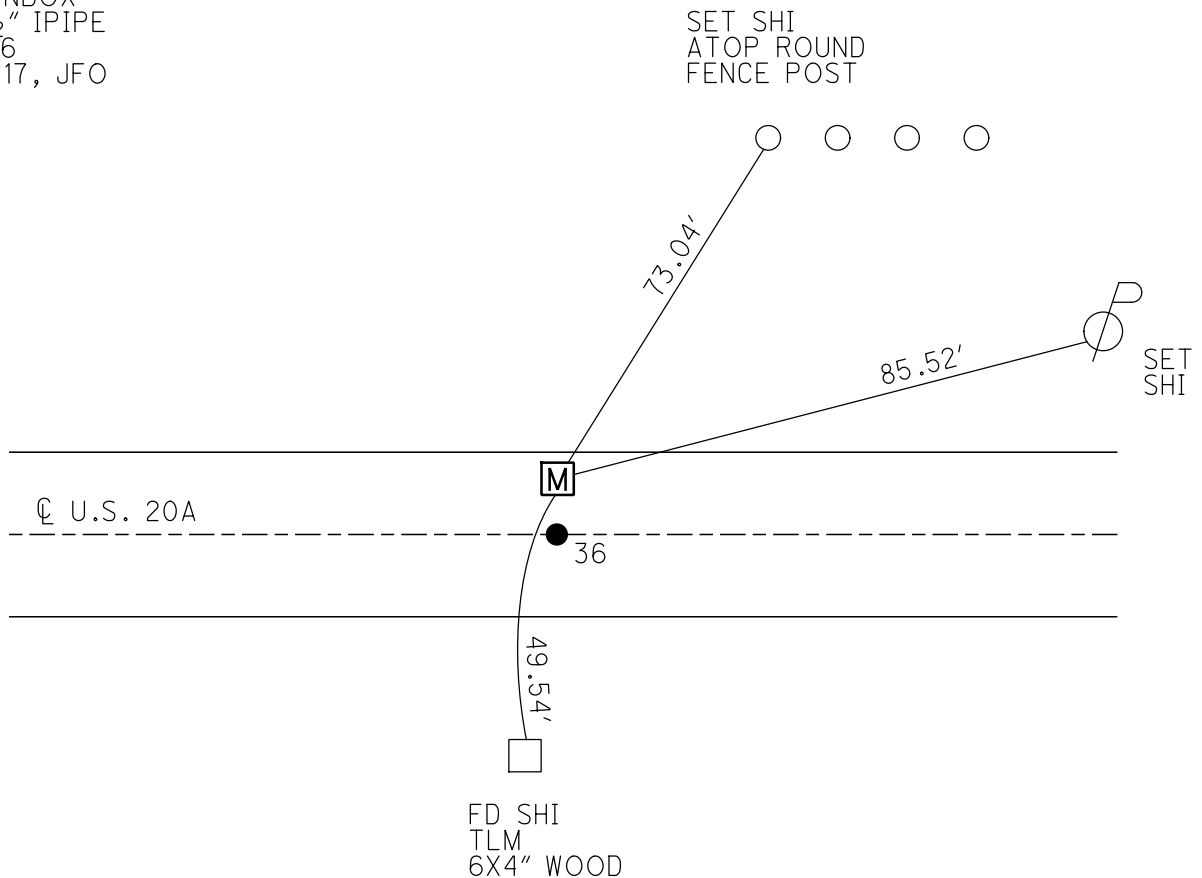
HORZ.DATUM: NAD83 (2011) GEOID: 2012A

GRID: NORTHING: 698443.062 EASTING: 1545160.482



RECORD:
 FD 1 1/2" IPIPE
 OVER STONE
 SET MONBOX
 W/ 1 1/2" IPIPE
 9/3/98, CL
 FD MONBOX
 W/ 1 1/2" IPIPE
 REFA36
 12/21/17, JFO

NOTE:
 DIST. 36-36A = 11.88'



O.D.O.T. DISTRICT 2 SURVEY OFFICE

PERSONNEL

REFERENCE NO. 36

SHEET 2 OF 3

NOTES LOHRKE

H.C. Cordes

DATE 9-3-98

ROUTE US 20-A

R.C.

WEATHER FAIR

COUNTY FULTON

TEMP. +18°C

TOWNSHIP YORK

SECTION 3/4 Corner of 10

T. 7 N. R. 7 E

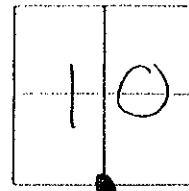
TYPE MONUMENT P.K. NAIL & WASHER Survey & R/W

ON SURFACE - BELOW Yes

~~FEET~~ - & PAW'T. - RIGHT Yes

TO EDGE PAVEMENT

S.L.M. 28+308.99



CONC. Drive

Drillhole
B" from East
and South Edges

Drillhole
SW Corner

CONC. PAD
Utilities
Boxes

A CoC = 19.986m

PLAN Sta. 28+308.940

See NOTE Lower Left.

MAN BOX
SEC. Corner

US 20-A

Q Survey & R/W

PLAN Sta 28+308.985

Q Survey
and R/W

NOTE: B = Man Box Installed 9-3-98

Fd 1 1/2" PIPE OVER STONE: Reset PIPE in it's ORIGINAL

Position As Rod INSIDE Box; NOTE PIPE is

0.06 feet East of and ± 0.06 ft South of the

Stone. SAID PIPE & P.K. NAIL correspond to

& PLAT of PLAN; FUL-20A-(27.25)(28.869)

York Township

PRINTED B LACK "+"
Near face Round Steel
fence Post.



O.D.O.T. DISTRICT 2 SURVEY OFFICE

PERSONNEL

REFERENCE NO. 36

SHEET 13 OF 24

NOTES 1. Stone

H.C. D. Curtis

DATE 17 Sept. 86

ROUTE US #20-A

R.C. J. Householder

WEATHER Cool

COUNTY Fulton

TEMP. 56°

TOWNSHIP York

SECTION 15

T R

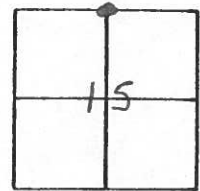
TYPE MONUMENT PK Nails

ON SURFACE - BELOW Surface

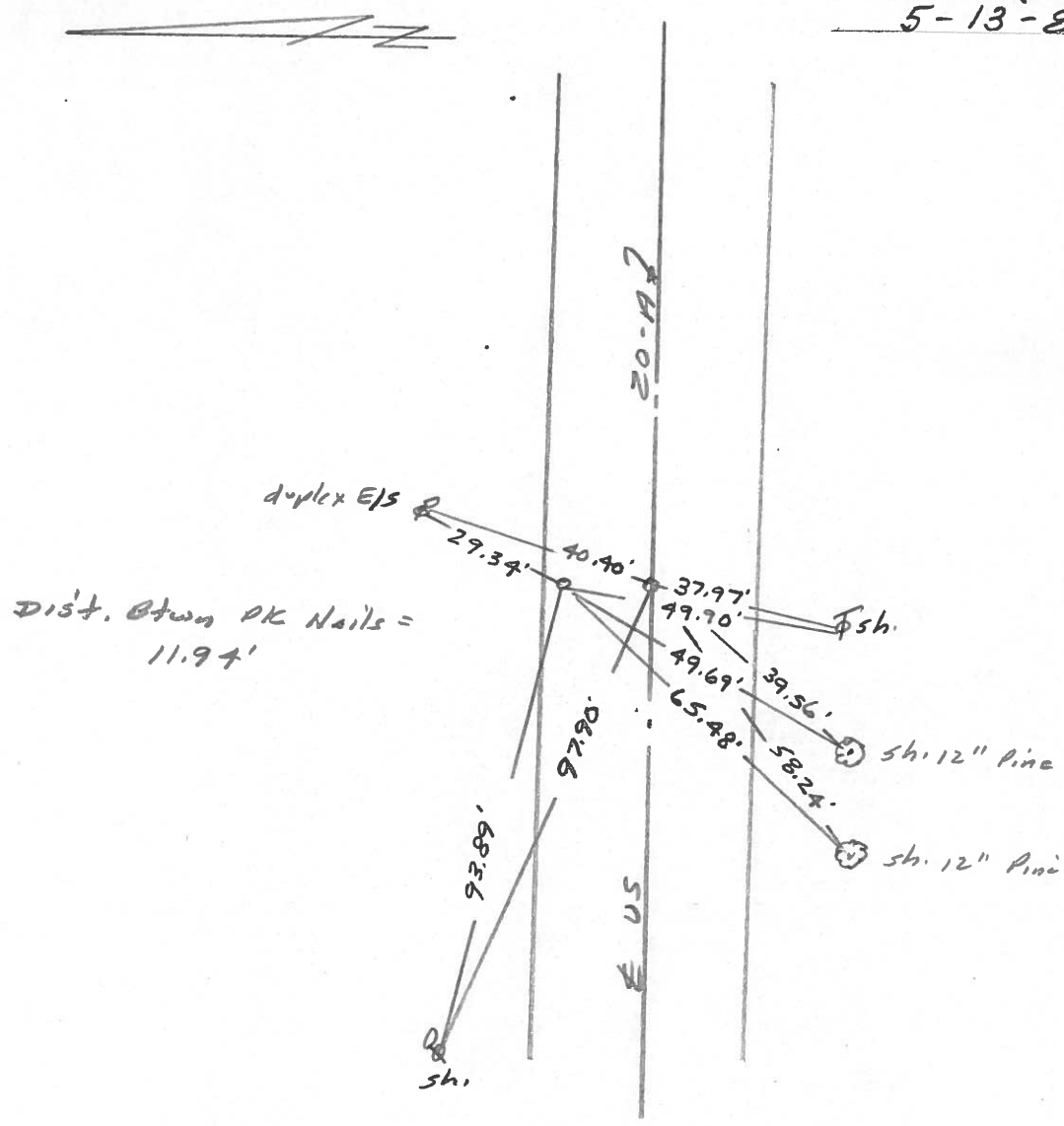
LEFT- & PAV'T. - RIGHT

 TO EDGE PAVEMENT

S.L.M. 928+90



SET P.K. NAILS TO SURFACE
5-13-88



County Fulton S.R. 2 ~~of~~ US20A

OK-10-16-80

Date 6-6-1980

Township York

Weather Clear

Section N 1/4 Cor. Sec. 15

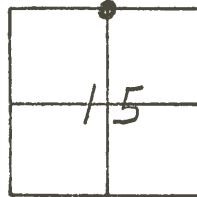
Temp. + 82°

TZN, RZE

Personnel Smith

Bowers

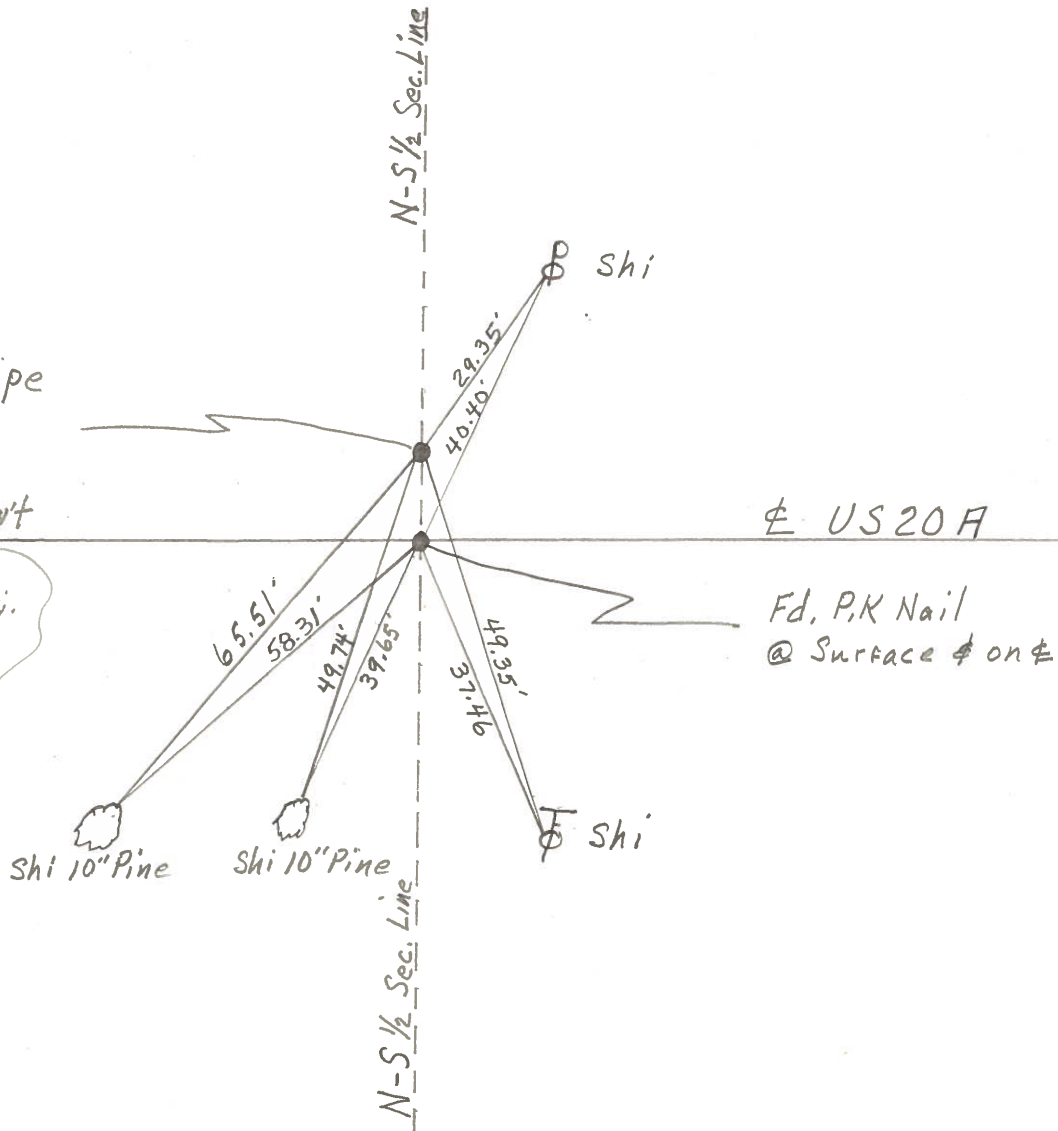
Mead



36

Fd 1" Iron Pipe
@ Surface
Pipe is 10'±
North of ~~E~~ Part

SET P.K. & Shi.
BOWERS

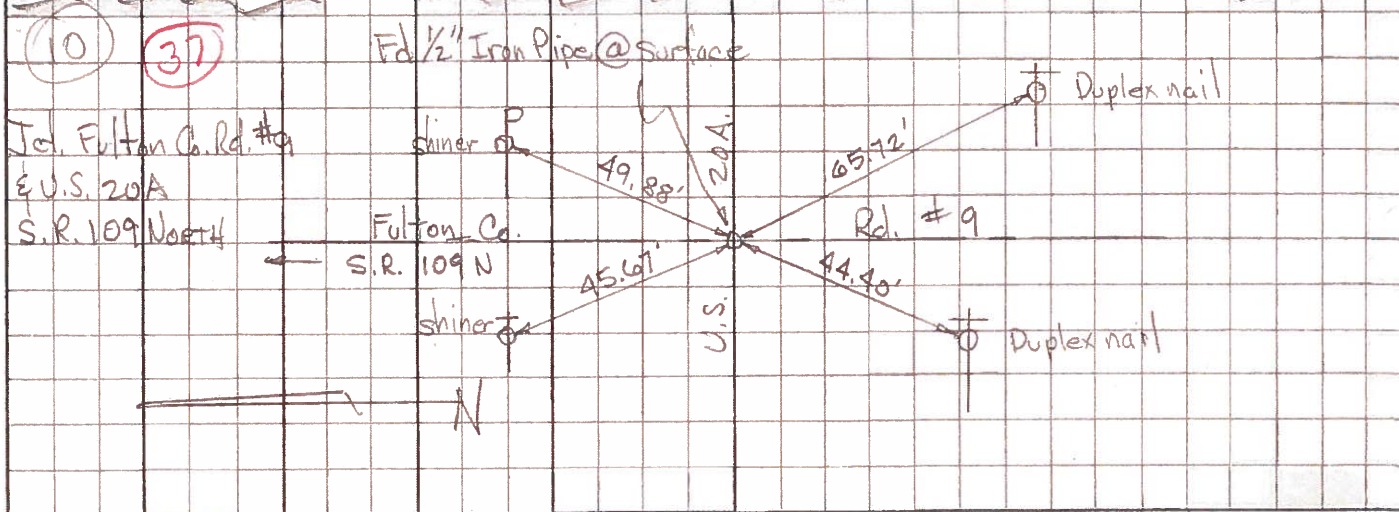
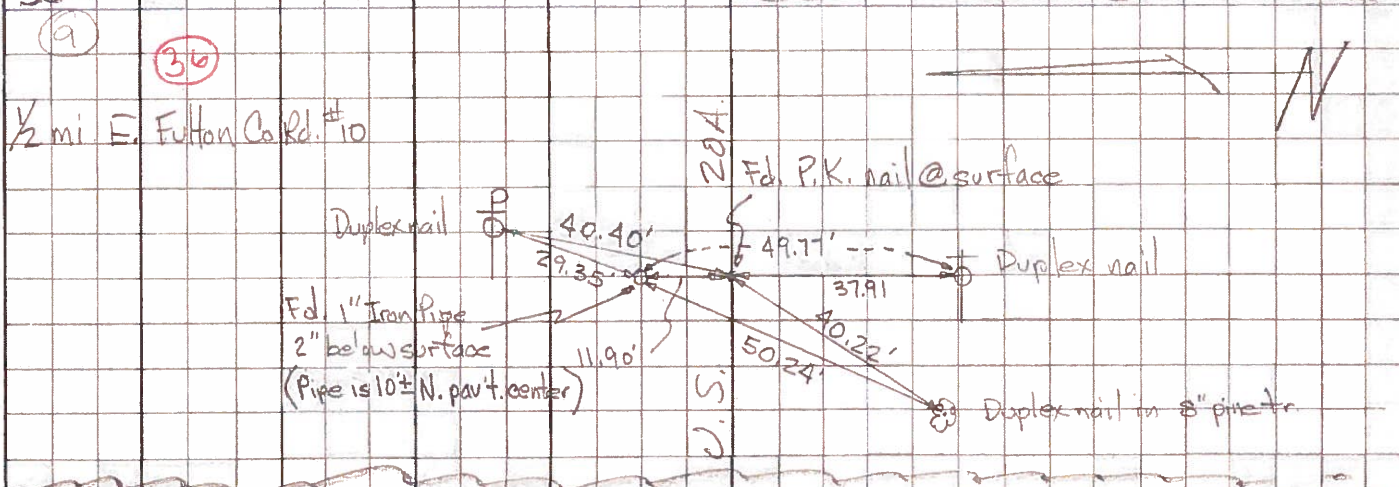
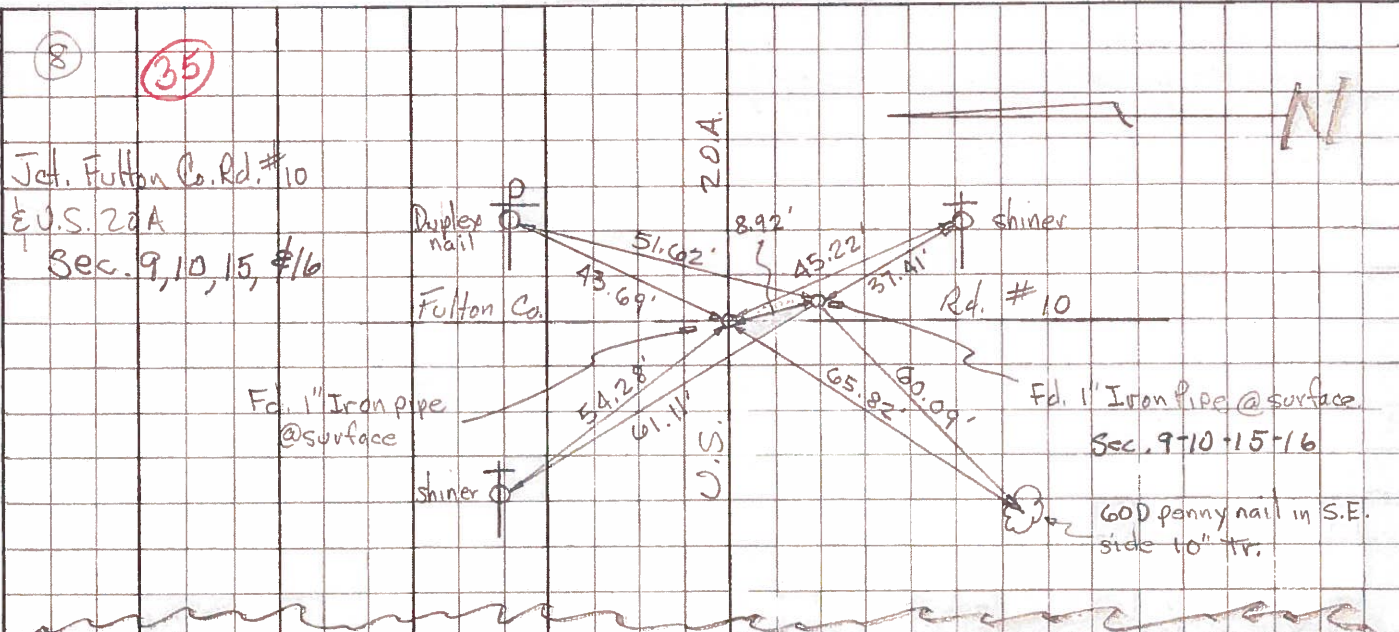


E US20A

Fd, P.K Nail
@ Surface ~~on~~ E

PERSONNEL	TITLE	PERSONNEL	TITLE	COUNTY	DATE	WEATHER	TEMP.
Tomsic				Fulton	April 19, 1973		
Weuser				S. R. US. 20A			
Granata							
Vauyo							

DESCRIPTION _____ LEFT _____ CENTER LINE _____ RIGHT _____ JOB NO. _____



PERSONNEL TITLE PERSONNEL TITLE

COUNTY Fulton

DATE OK-1-24-58

S. R. #20 Alt.

WEATHER

SEC.

TEMP.

DESCRIPTION

LEFT

CENTER LINE

RIGHT

JOB NO.

Point on & West Wabash
Sta. 65+89.5
E.P. spike

#112-A

Sec. 1/4 cor 1 1/2 mile E.
Sta. 79+03.4
Mon.
N 1/4 Sec. 15

(36)

#113

Sta. 95+51.5
3/4" Gas pipe on &
E.P. spike
NW 1/4 of NE 1/4 Sec. 15

#113-A

Sec. Cor. 2 mile E.
Sta. 105+33.05
Stone - Mon.
NW Cor. Sec. 15

(37)

#114

