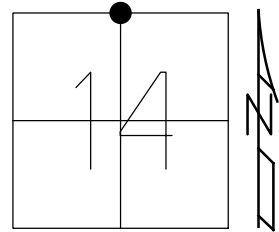


O.D.O.T. DISTRICT 2 SURVEY OFFICE (USE ONLY)

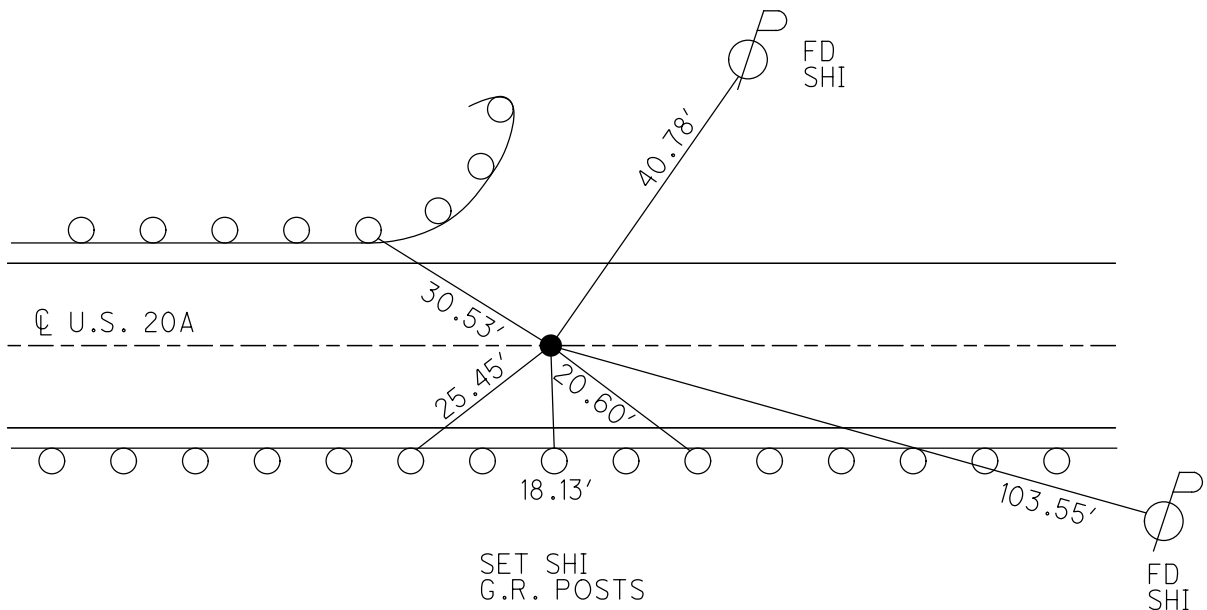
PERSONNEL \_\_\_\_\_ REFERENCE NO. 39 SHEET 6 OF 6  
 NOTES NIESE DATE 4-23-21 ROUTE US 20A  
 H.C. AUBLE WEATHER CLOUDY COUNTY FULTON  
 R.C. NIESE TEMP. 41° TOWNSHIP YORK  
 DWG BY AUBLE PID 101295 SECTION 14  
 T 7 N R 7 E

TYPE MONUMENT MAG NAIL  
 ON SURFACE - ~~BELOW~~ ON  
 OFFSET ☉ PAVEMENT ON LT : RT  
12.4' TO RT EDGE PAVEMENT  
 STATION: 981+28.99



HORZ.DATUM: NAD83 (2011) GEOID: 2012A  
 GRID: NORTHING: 698408.703 EASTING: 1550446.486

RECORD:  
 FD SM.R.R.SPIKE  
 8/14/03, RGN  
 SET MAG/WASHER  
 12/29/03, RGN  
 FD MAG/WASHER  
 12/5/17, JFO  
 REF39  
 12/21/17, JFO  
 SET MAG/WASHER  
 10-6-21, DSA



O.D.O.T. DISTRICT 2 SURVEY OFFICE (USE ONLY)

PERSONNEL

REFERENCE NO. 39

SHEET 6 OF 6

NOTES RHOADES  
 H.C. O'DONNELL  
 R.C. MILLER

DATE 6/11/19  
 WEATHER CLOUDY  
 TEMP. 62°

ROUTE US 20A  
 COUNTY FULTON  
 TOWNSHIP YORK  
 SECTION 14

DWG BY BALBAUGH PID 101232

T 7 N R 7 E

TYPE MONUMENT MAG/WASHER

ON SURFACE - ~~BELOW~~ ON

OFFSET  $\odot$  PAVEMENT ON ~~LT~~ : ~~RT~~

12.4' TO RT EDGE PAVEMENT

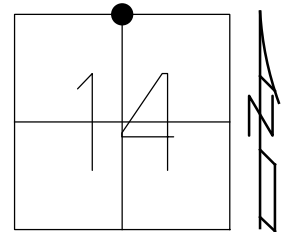
STATION: 981+28.99

HORIZ.DATUM: NAD83 (2011)

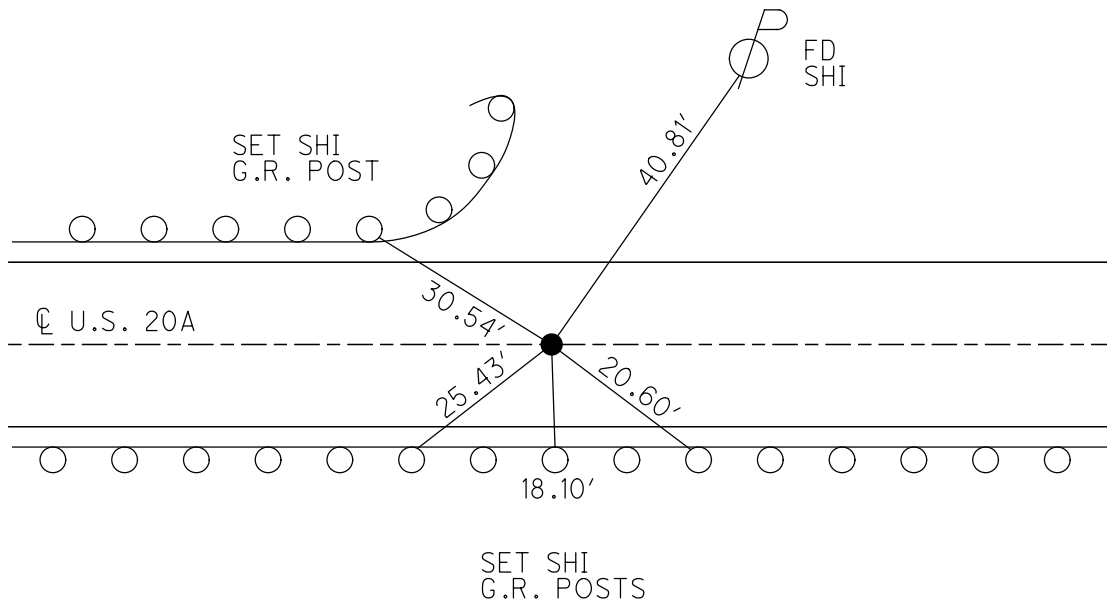
GEOID: 2012A

GRID: NORTHING: 698408.715

EASTING: 1550446.503



RECORD:  
 FD SM.R.R.SPIKE  
 8/14/03, RGN  
 SET MAG/WASHER  
 12/29/03, RGN  
 FD MAG/WASHER  
 12/5/17, JFO  
 REF39  
 12/21/17, JFO



# O.D.O.T. DISTRICT 2 SURVEY OFFICE

PERSONNEL

REFERENCE NO. 39

SHEET 1 OF 11

NOTES CANTERBURY

H.C. NUMBER

R.C. ZEBROWSKI

DATE 8-14-03

WEATHER SUNNY

TEMP. +80°

ROUTE U.S. 20-A

COUNTY Fulton

TOWNSHIP York

SECTION 14

T. 7 N. R. 7 E

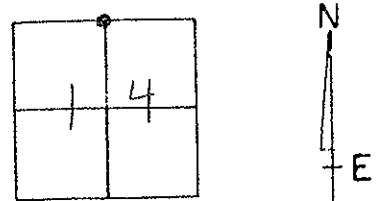
TYPE MONUMENT SMALL RAILROAD SPIKE

ON SURFACE - BELOW SURFACE

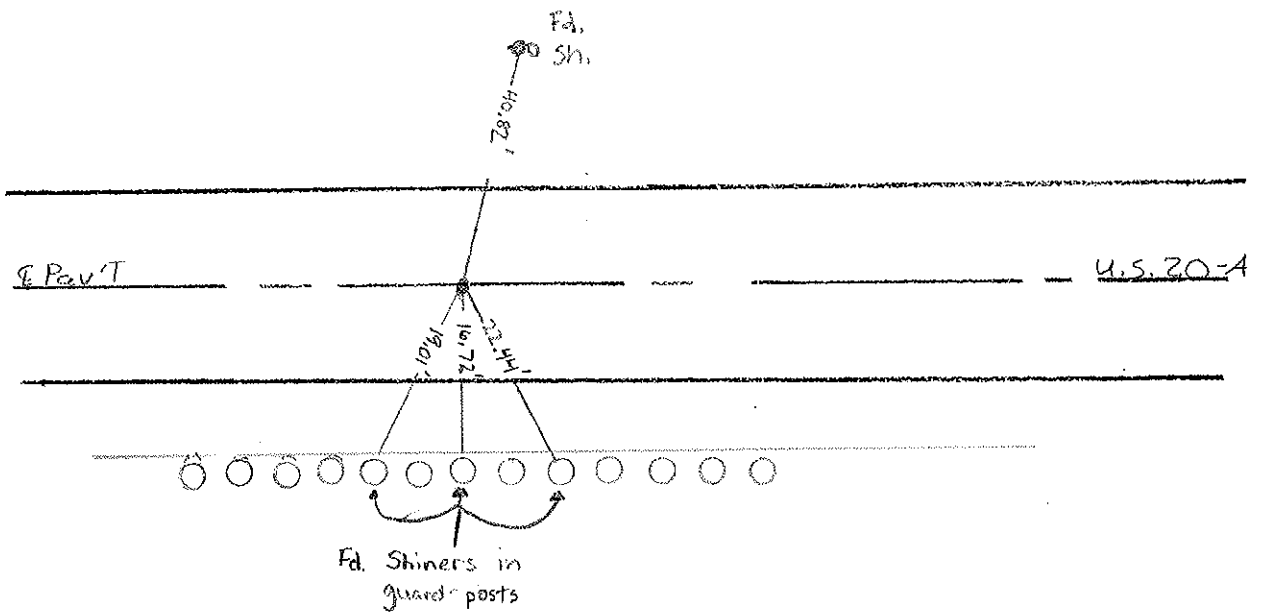
LEFT - ☉ PAV'T. - RIGHT ON ☉

12.4' TO RT. EDGE PAVEMENT

S.L.M. 981+77



SET MAGNAIL/washer  
12-29-03 RGN



Resurced 2003

# O.D.O.T. DISTRICT 2 SURVEY OFFICE

PERSONNEL

REFERENCE NO. 39

SHEET 15 OF 24

NOTES 1. Stone

H.C. D. Curtis

DATE 17 Sept. 86

ROUTE US #20-A

R.C. J. Hauscholder

WEATHER Cool

COUNTY Fulton

TEMP. 58°

TOWNSHIP York

SECTION 14

T \_\_\_ R \_\_\_

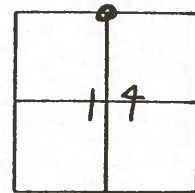
TYPE MONUMENT 1" I. pipe

ON SURFACE - BELOW 3" deep

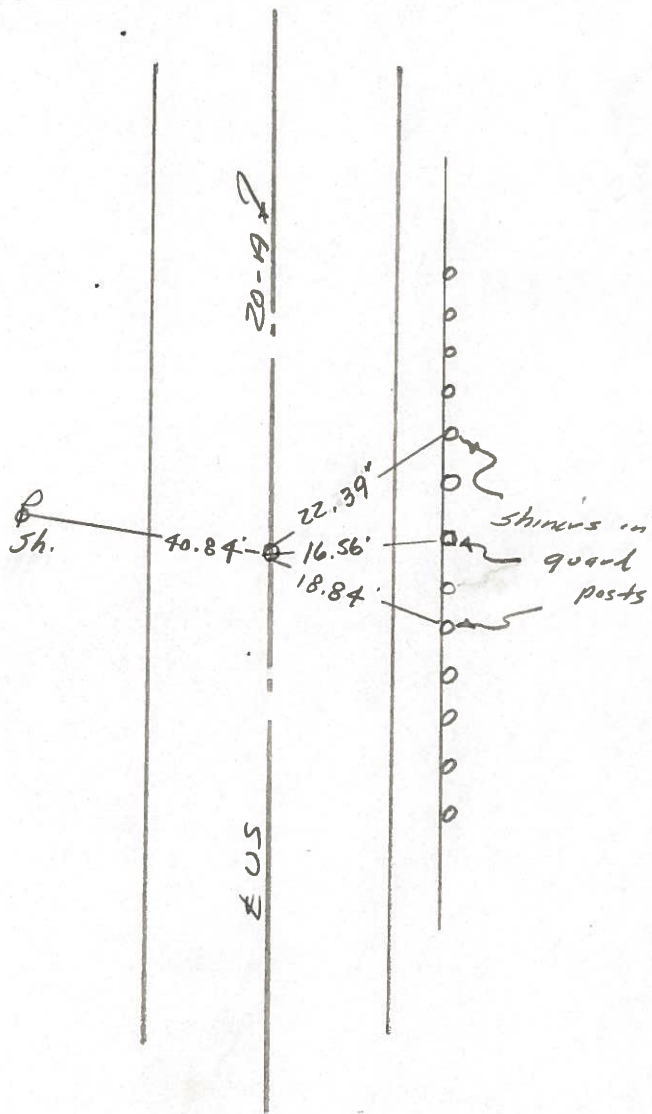
LEFT- & PAV'T. - RIGHT

TO \_\_\_ EDGE PAVEMENT

S.L.M. 981 + 77



SET SM. R.R. SPK. TO SURFACE  
5-13-88



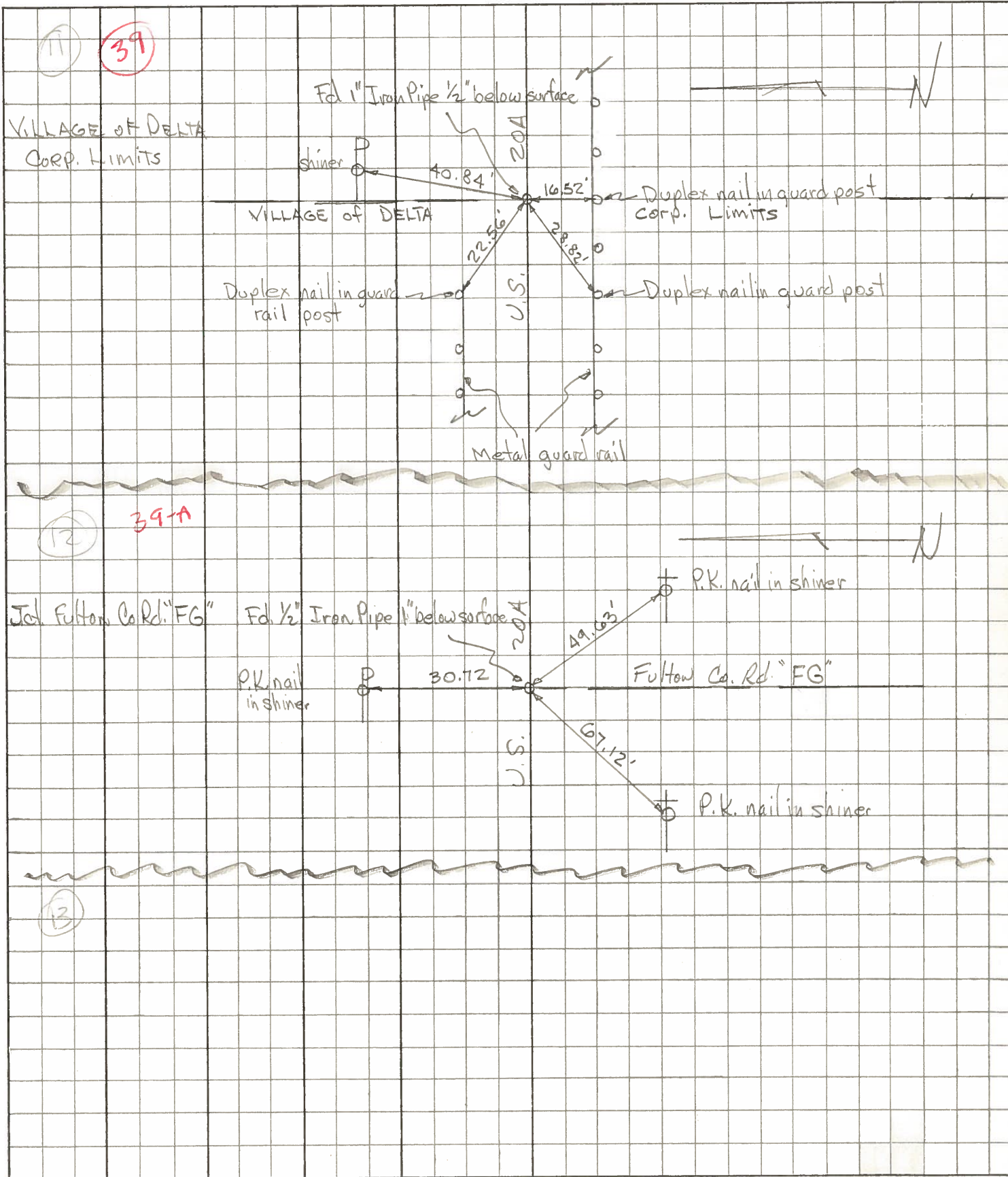
PERSONNEL	TITLE	PERSONNEL	TITLE
Tomsic			
Neuser			
Granata			
Vanyo			

COUNTY Fulton DATE April 19, 1973

S. R. U.S. 20A WEATHER \_\_\_\_\_

SEC. \_\_\_\_\_ TEMP. \_\_\_\_\_

DESCRIPTION \_\_\_\_\_ LEFT \_\_\_\_\_ CENTER LINE \_\_\_\_\_ RIGHT \_\_\_\_\_ JOB NO. \_\_\_\_\_





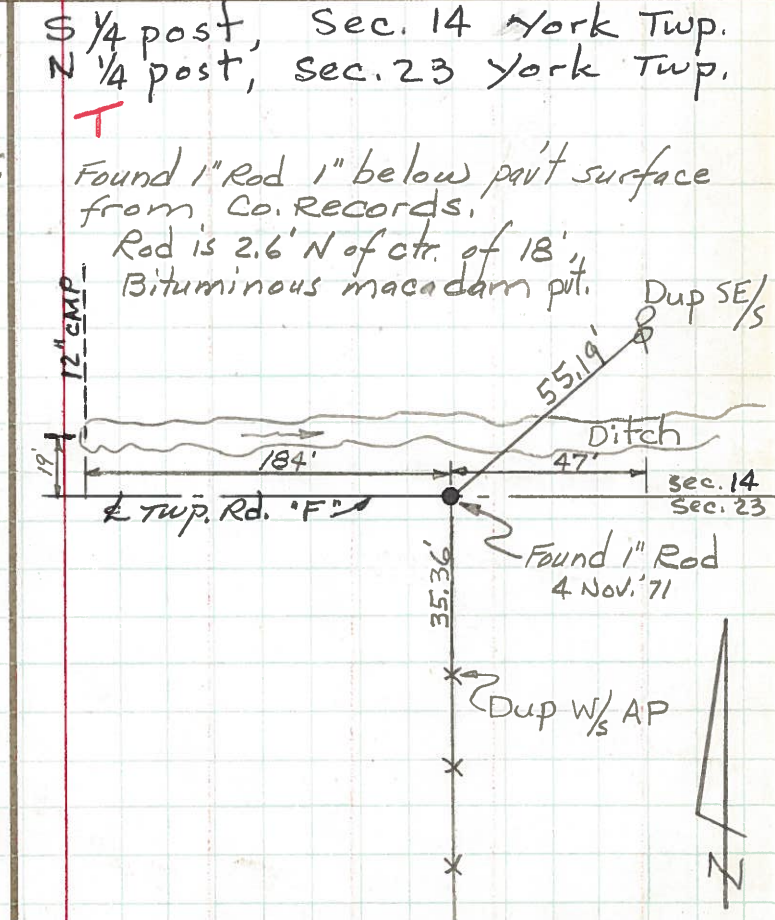
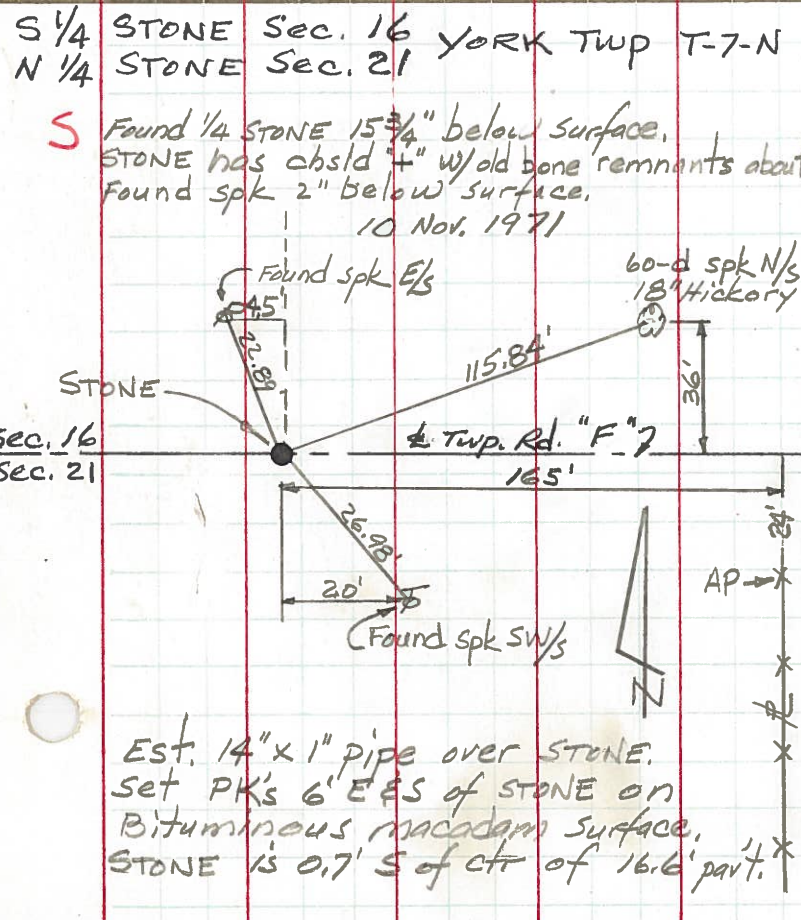
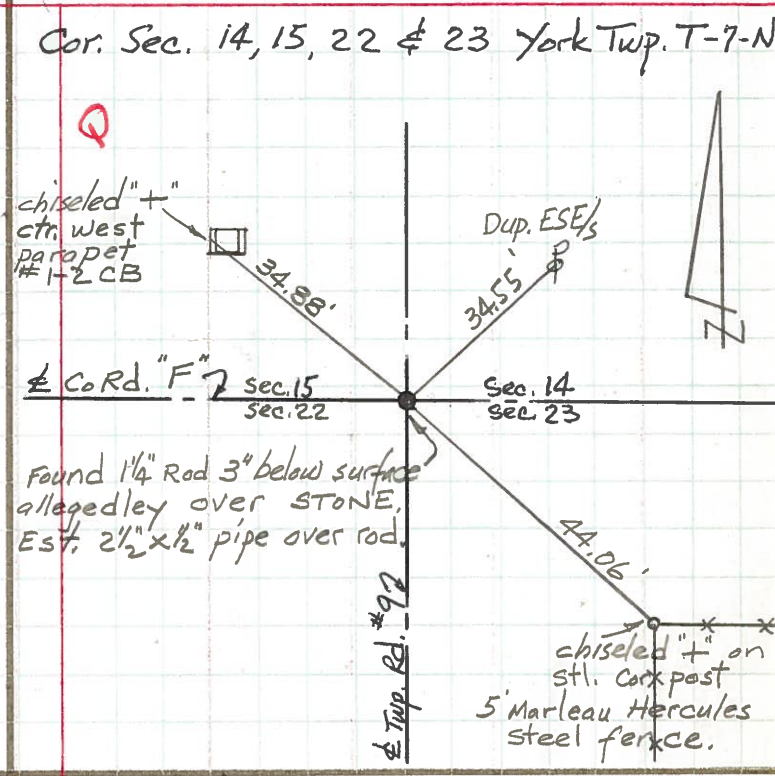
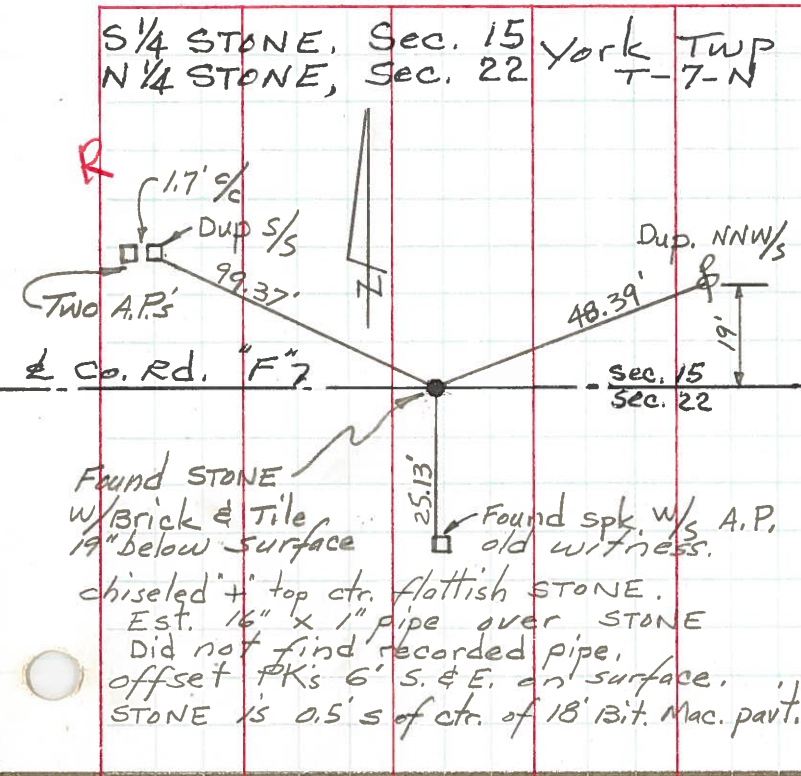
PERSONNEL TITLE PERSONNEL TITLE  
Red Beach  
Newcomb  
Knape  
Wise

COUNTY Fulton DATE Sept. 1971

S. R. US 20-A WEATHER \_\_\_\_\_

SEC. York Twp. TEMP. \_\_\_\_\_

DESCRIPTION CONTROL POINTS JOB NO. \_\_\_\_\_



PERSONNEL TITLE PERSONNEL TITLE

COUNTY Fulton

DATE

S. R. #2 & 20 RH.

WEATHER

SEC.

TEMP.

DESCRIPTION

LEFT

CENTER LINE

RIGHT

JOB NO.

10-24-61 W. Knepper

5/4 post sec. 11  
1/2 mi. West of  
W. corp. Delta  
Iron pin

#81

shi. P N.E.

55.50'

17.53'

shi. Guard rail post  
S.S.E.

45.20'

28.15'

shi. Guard rail post  
N.W.

shi. Guard rail post  
S.W.

S. Hinge flange  
East on 18" Gas Valve  
Housing

S.E. cor. Sec. 11 & Rd. S.  
West corp. line  
Delta.

#82

N.E.

38.05'

39.70'

Near side Fire Hyd  
E.S.E.

52.50'

58.50'

P.I. Hole in conc. pavement

36.60'

21.41'

shi. P  
E. side N.

28.95'

Lead pipe

Sta. 1009+00.8



PERSONNEL TITLE PERSONNEL TITLE  
 Pessefall \_\_\_\_\_  
 Wise \_\_\_\_\_  
 Baird \_\_\_\_\_  
 Newcomb \_\_\_\_\_

COUNTY Fulton

DATE 9-30-60

S. R. 20 A & 2

WEATHER Cloudy

SEC. \_\_\_\_\_

TEMP. 60°

DESCRIPTION Wauseon 20 A & 2 To Delta

JOB NO. \_\_\_\_\_

LEFT

CENTER LINE

RIGHT

*OK, W. Knope 10-24-61*

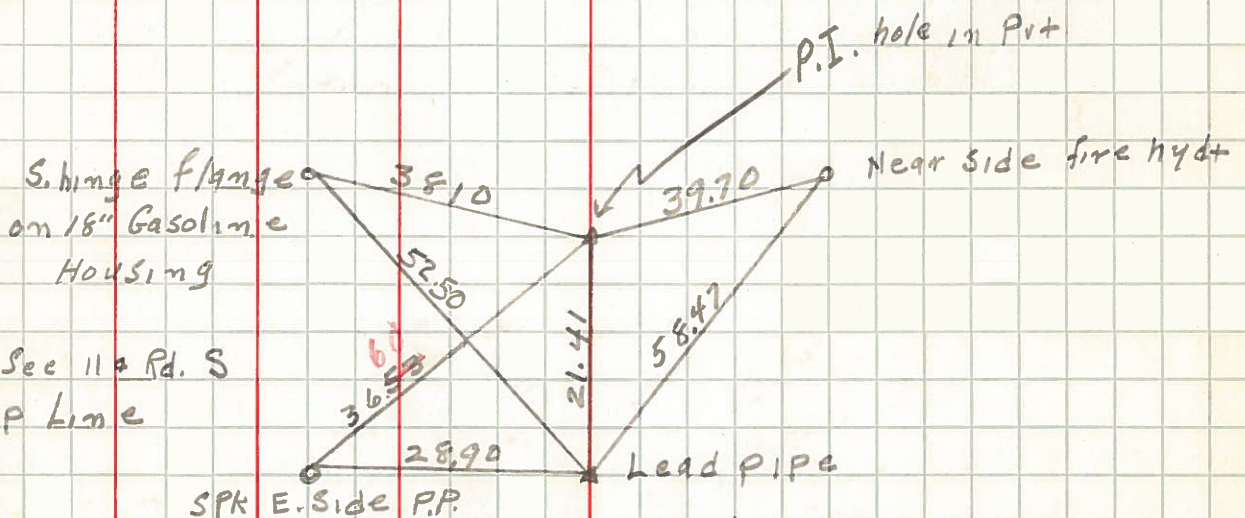
# 82

S.E. Cor Sec 11 & Rd. S  
 West Corp Line  
 Delta

SPK E. Side P.P.

Lead Pipe

Sta. 1009+00.8



# 81

S. 1/4 post Sec 11  
 1/2 mi west of  
 Delta Corp  
 Iron Pin

Shi S.W. Side P.P.

P.K.

Shi Guard Rail Post

*OK, W. Knope 10-24-61*

Shi N.W. Side 13" sycamore

Shi N.E. Side 12" sycamore

Shi Guard Rail Post

Shi Guard Rail Post

