

O.D.O.T. DISTRICT 2 SURVEY OFFICE (USE ONLY)

PERSONNEL

REFERENCE NO. 39 A

SHEET 1 OF 14

NOTES NIESE

DATE 4-23-21

ROUTE US 20 A

H.C. AUBLE

WEATHER WINDY

COUNTY FULTON

R.C. NIESE

TEMP. 50°

TOWNSHIP YORK

SECTION 14

DWG BY AUBLE

PID 101295

T 7 N R 7 E

TYPE MONUMENT MAG NAIL

ON SURFACE - ~~BELOW~~ ON

OFFSET ☉ PAVEMENT ON LT : RT

12.2' TO LT EDGE PAVEMENT

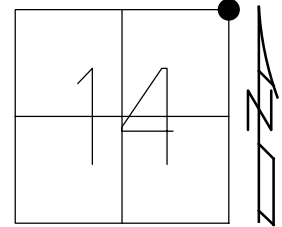
STATION: 1008+18

HORZ.DATUM: NAD83(2011)

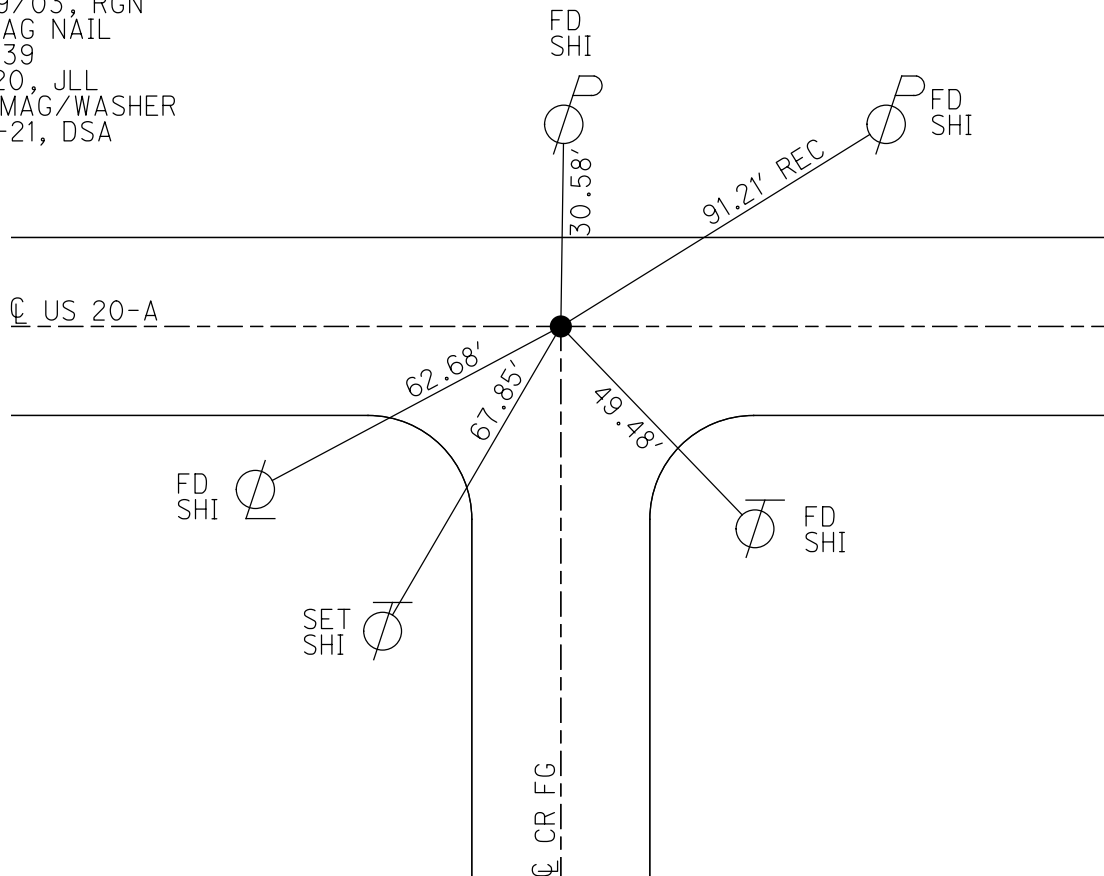
GEOID: 12A

GRID: NORTHING: 698378.296

EASTING: 1553087.009



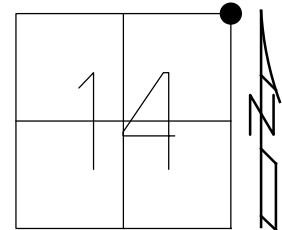
RECORD:  
SET MAG/WASHER  
12/29/03, RGN  
FD MAG NAIL  
REFA39  
1-9-20, JLL  
SET MAG/WASHER  
10-6-21, DSA



O.D.O.T. DISTRICT 2 SURVEY OFFICE (USE ONLY)

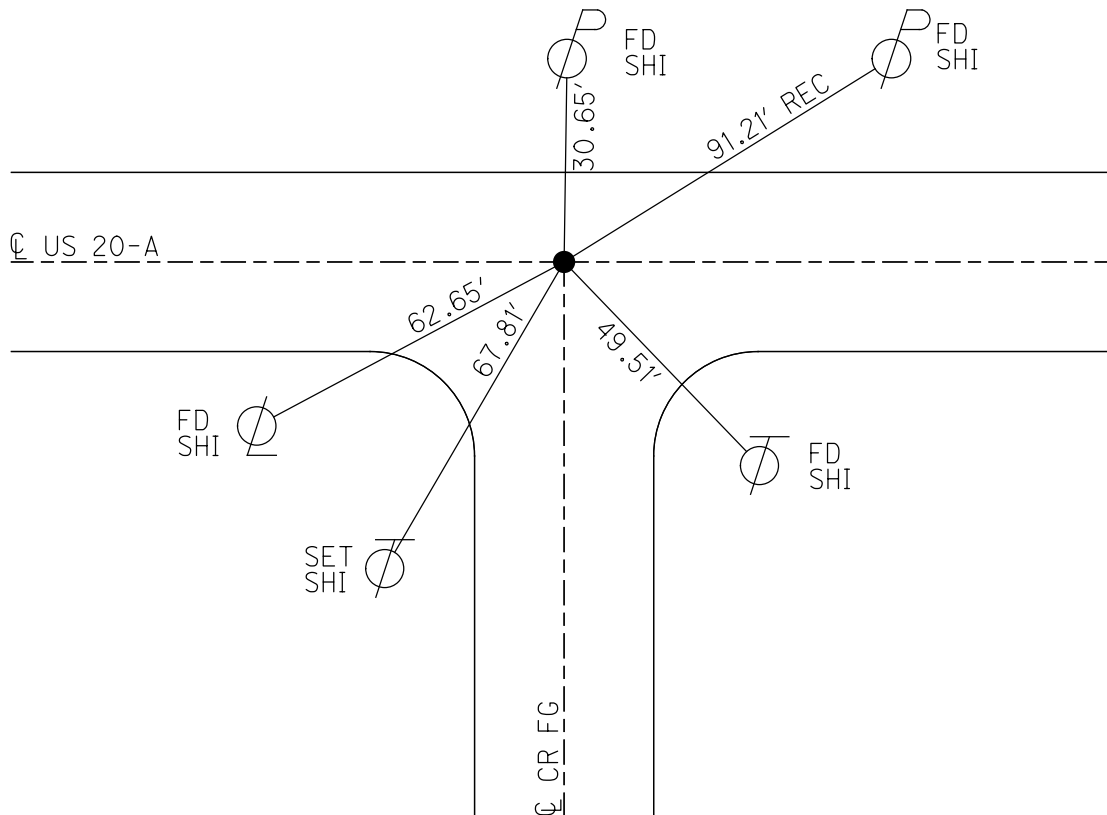
PERSONNEL \_\_\_\_\_ REFERENCE NO. 39 A SHEET 1 OF 14  
 NOTES CANTERBURY DATE 8/14/03 ROUTE US 20 A  
 H.C. NUHFER WEATHER SUNNY COUNTY FULTON  
 R.C. ZEBROWSKI TEMP. 80° TOWNSHIP YORK  
 DWG BY NIESE PID \_\_\_\_\_ SECTION 14  
 T 7 N R 7 E

TYPE MONUMENT SM.R.R.SPIKE  
 ON SURFACE - ~~BELOW~~ ON  
 OFFSET CL PAVEMENT ON LT : RT  
12.2' TO LT EDGE PAVEMENT  
 STATION: 1008+18



HORZ. DATUM: - GEOID: -  
 GRID: NORTHING: - EASTING: -

RECORD:  
 SET MAG/WASHER  
 12/29/03, RGN



# O.D.O.T. DISTRICT 2 SURVEY OFFICE

PERSONNEL \_\_\_\_\_

REFERENCE NO. 39-A

SHEET 2 OF 11

NOTES CANTERBURY

H.C. NUMBER

R.C. BETKOWSKI

DATE 8-14-03

WEATHER SUNNY

TEMP. +80°

ROUTE U.S. 20-A

COUNTY Fulton

TOWNSHIP York

SECTION 14

T. 7 N. R. 7 E.

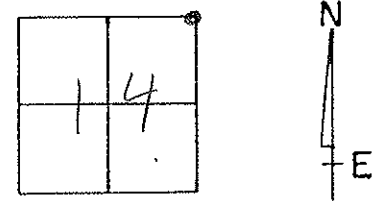
TYPE MONUMENT SMALL RAILROAD SPIKE

ON SURFACE - BELOW SURFACE

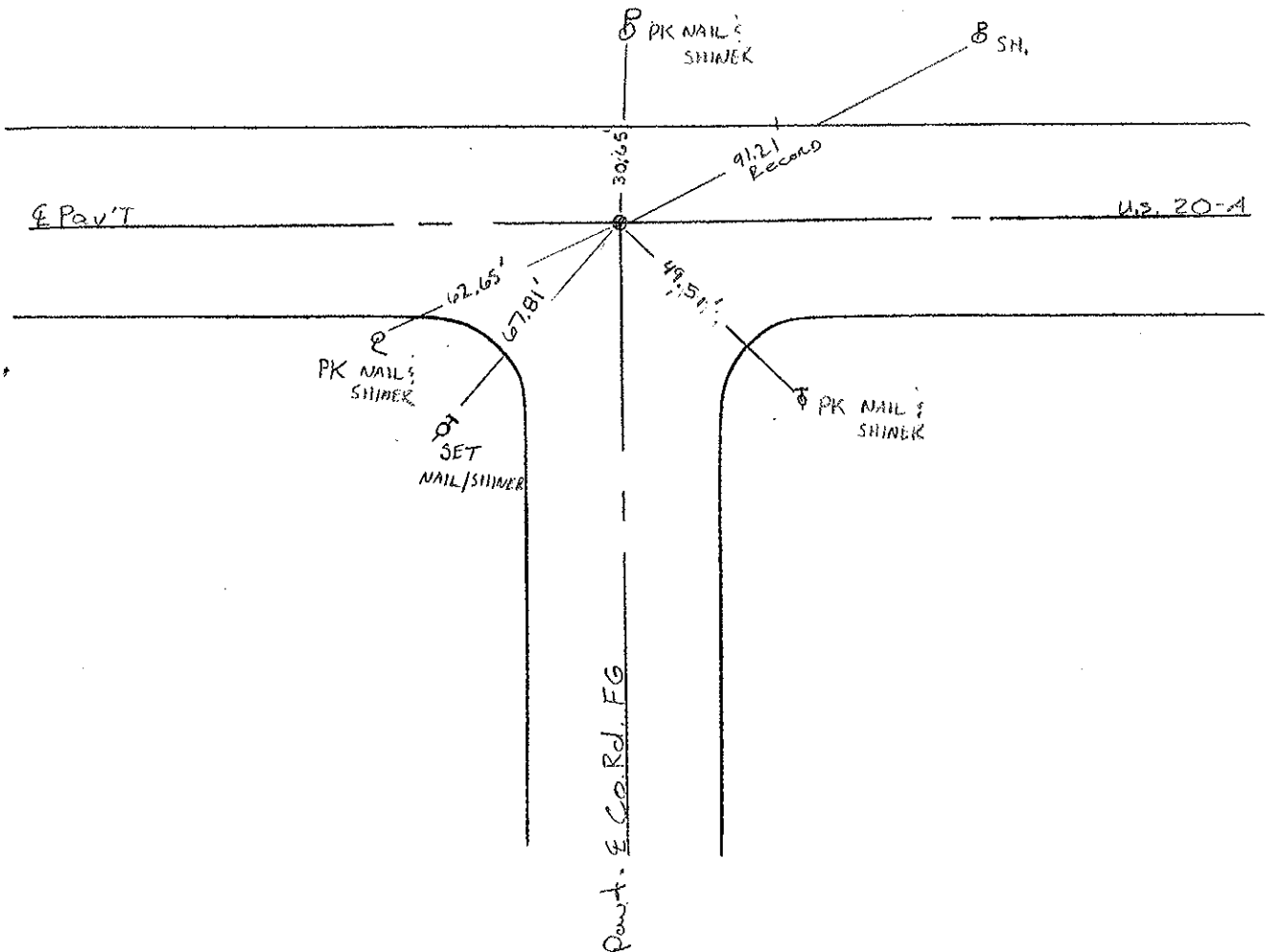
LEFT-☉ PAV'T. - RIGHT ON ☉

0.2' TO LT. EDGE PAVEMENT

S.L.M. 1000+10



SET MAGNAIL / WASHER  
K6N 12-29-03



# O.D.O.T. DISTRICT 2 SURVEY OFFICE

PERSONNEL

REFERENCE NO. 39-A

SHEET 16 OF 24

NOTES 1 Stone

H.C. D. Curtis

DATE 17 Sept. 86

ROUTE US #20-A

R.C. J. Housholder

WEATHER Cool

COUNTY Fulton

TEMP. 59°

TOWNSHIP York

SECTION 11-12-13-14

T \_\_\_ R \_\_\_

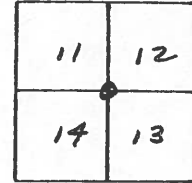
TYPE MONUMENT 3/4" I. pipe

ON SURFACE - BELOW 3" deep

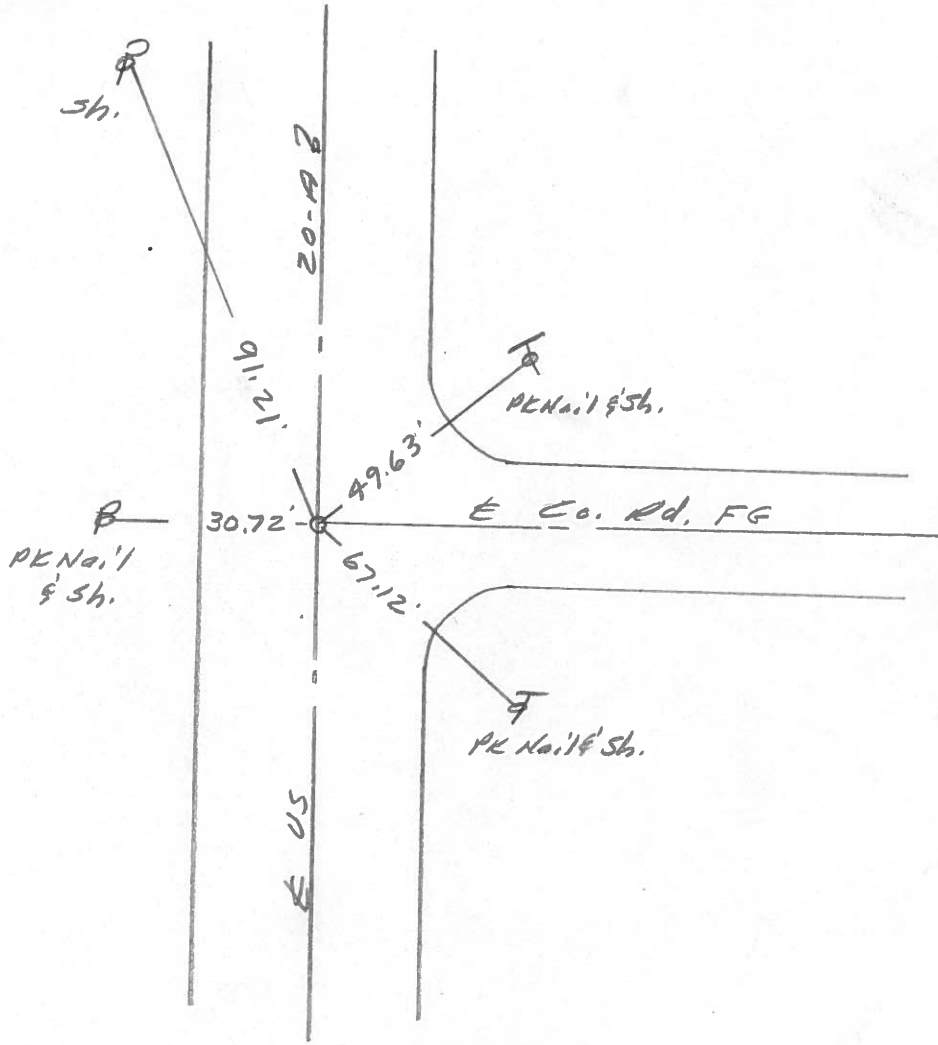
LEFT- & PAV'T. - RIGHT

\_\_\_ TO \_\_\_ EDGE PAVEMENT

S.L.M. 1008+18



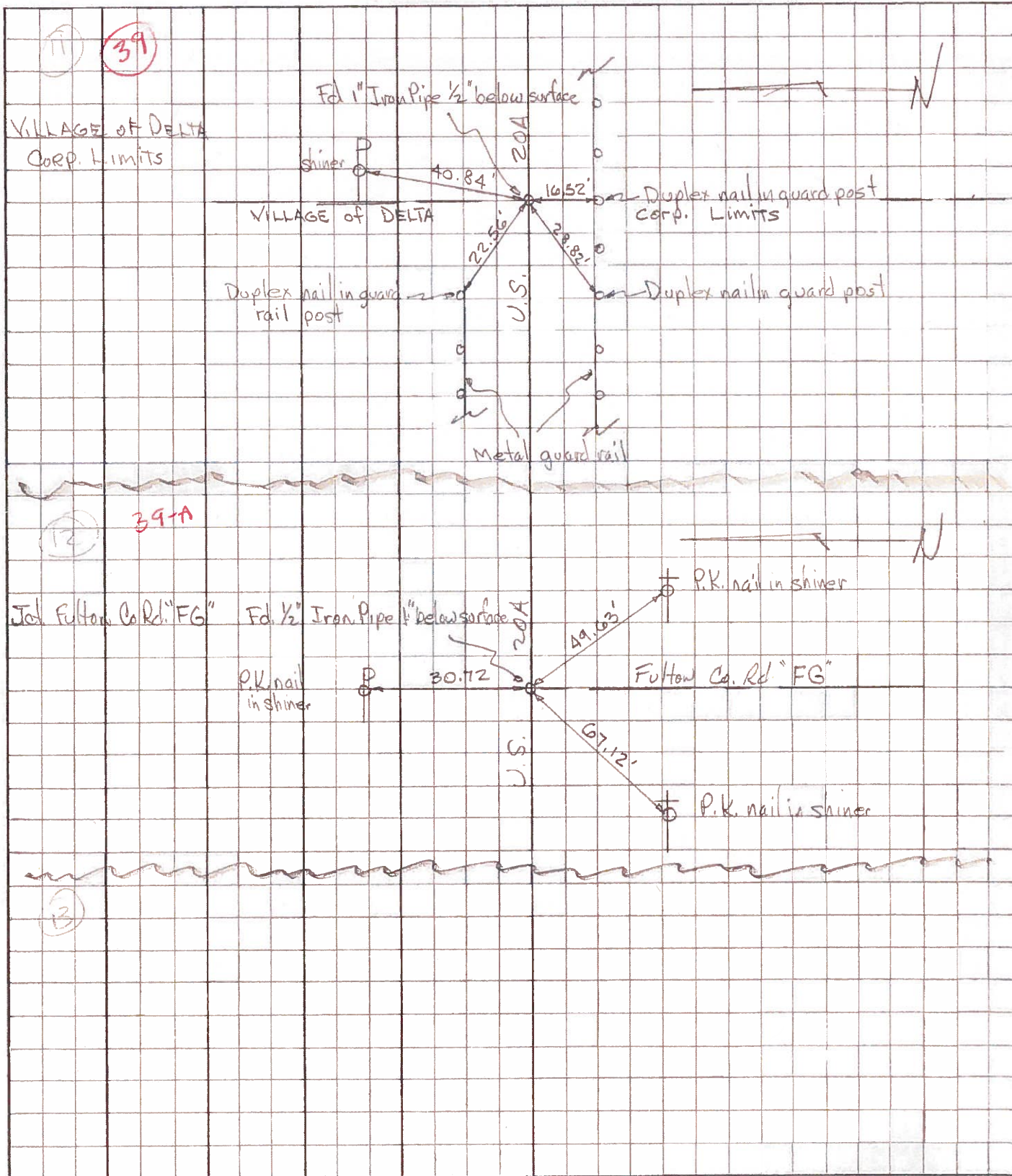
SET SM. R.R. SPK. TO SURFACE  
5-13-88



PERSONNEL	TITLE	PERSONNEL	TITLE
Tomsic			
Neuser			
Granata			
Vanyo			

COUNTY Fulton DATE April 19, 1973  
 S. R. U.S. 20A WEATHER \_\_\_\_\_  
 SEC. \_\_\_\_\_ TEMP. \_\_\_\_\_

DESCRIPTION \_\_\_\_\_ LEFT \_\_\_\_\_ CENTER LINE \_\_\_\_\_ RIGHT \_\_\_\_\_ JOB NO. \_\_\_\_\_



PERSONNEL TITLE PERSONNEL TITLE

W. Denno  
 D. Curtis  
 J. Miller

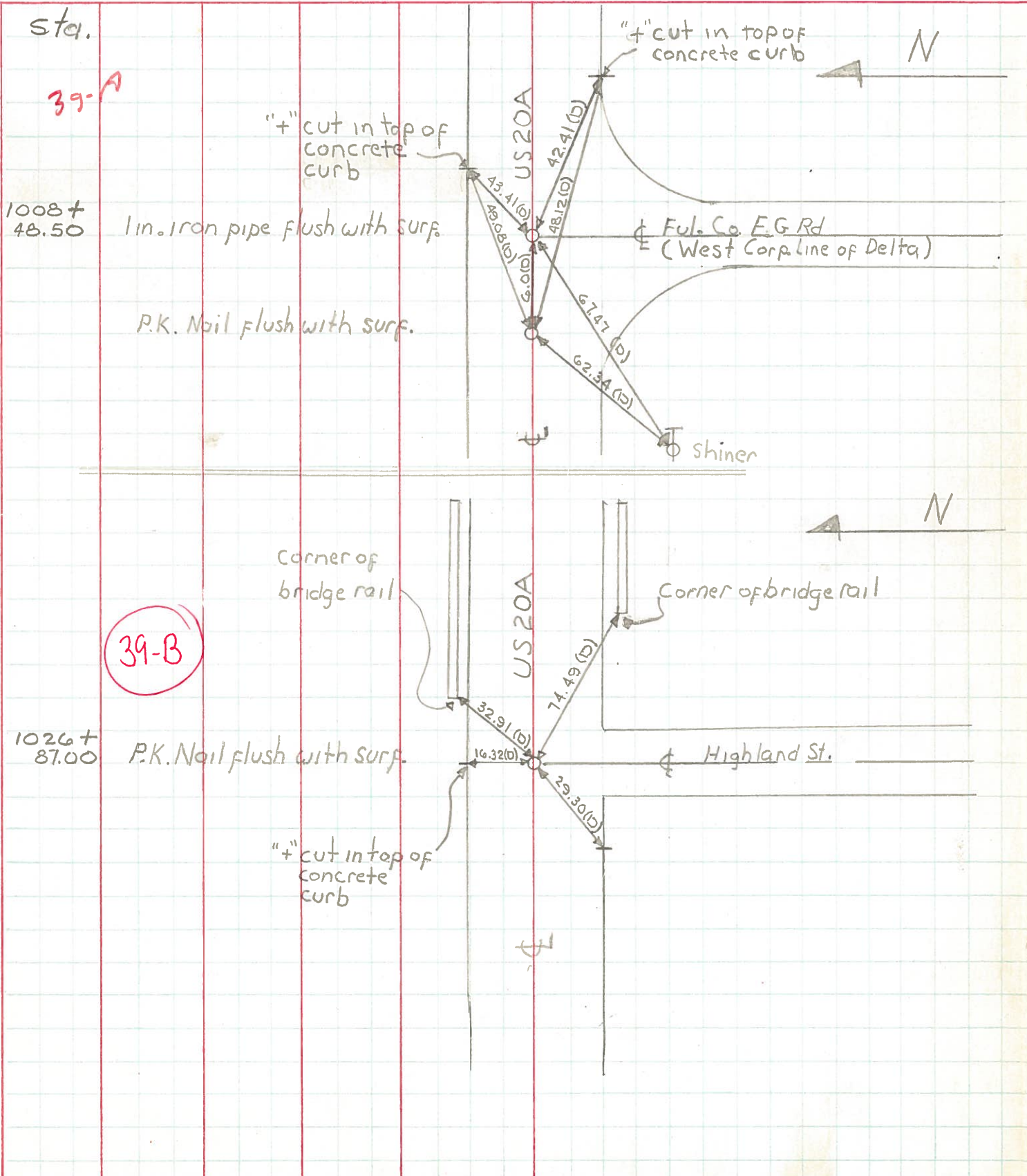
D. Granata  
 P. Neuser  
 A. Vanyo

COUNTY Fulton DATE June 9, 1971

S. R. #20A WEATHER Sunny, Mild

SEC. DELTA CULLAGE TEMP. 75°

DESCRIPTION References to Control Points JOB NO.





PERSONNEL TITLE PERSONNEL TITLE  
 Pessefall \_\_\_\_\_  
 Wise \_\_\_\_\_  
 Baird \_\_\_\_\_  
 Newcomb \_\_\_\_\_

COUNTY Fulton

DATE 9-30-60

S. R. 20 A & 2

WEATHER Cloudy

SEC. \_\_\_\_\_

TEMP. 60°

DESCRIPTION Wauseon 20 A & 2 To Delta

JOB NO. \_\_\_\_\_

LEFT

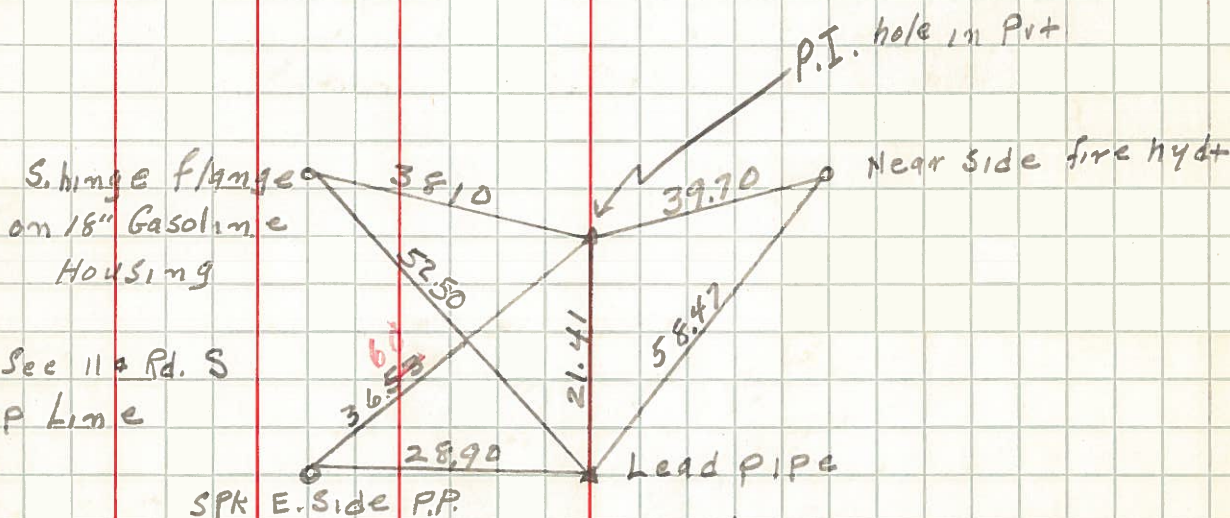
CENTER LINE

RIGHT

*OK, W. Kropf 10-24-61*

# 82

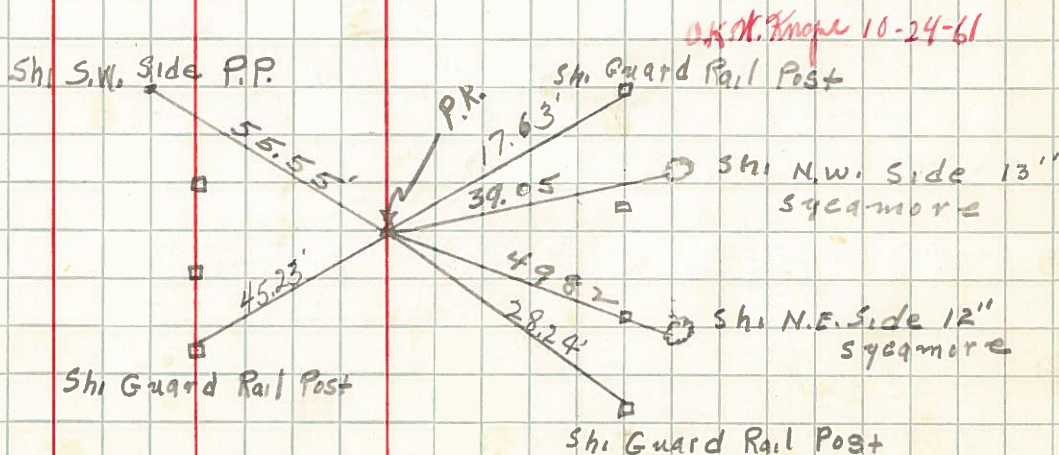
S.E. Cor Sec 11 & Rd. S  
 West Corp Line  
 Delta



Sta. 1009+00.8

# 81

S. 1/4 post Sec 11  
 1/2 mi west of  
 Delta Corp  
 Iron Pin





PERSONNEL TITLE PERSONNEL TITLE

COUNTY Fulton

DATE OK-1-24-58

S. R. #20 Alt.

WEATHER

SEC.

TEMP.

DESCRIPTION

LEFT

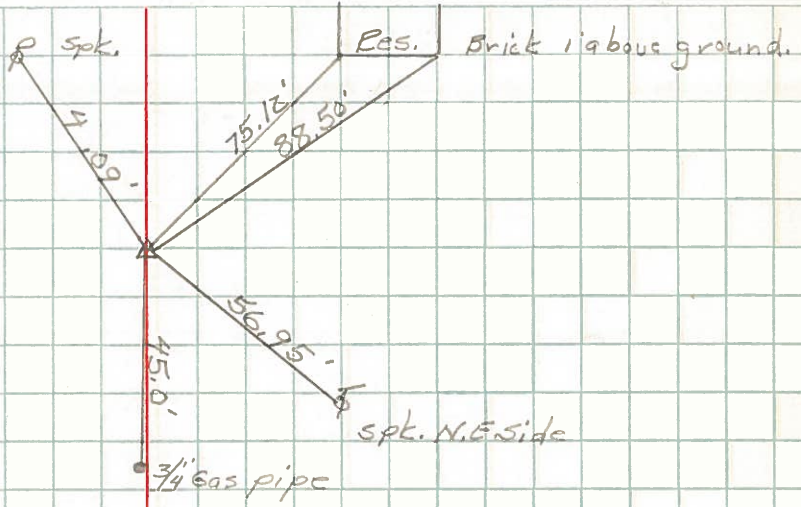
CENTER LINE

RIGHT

JOB NO.

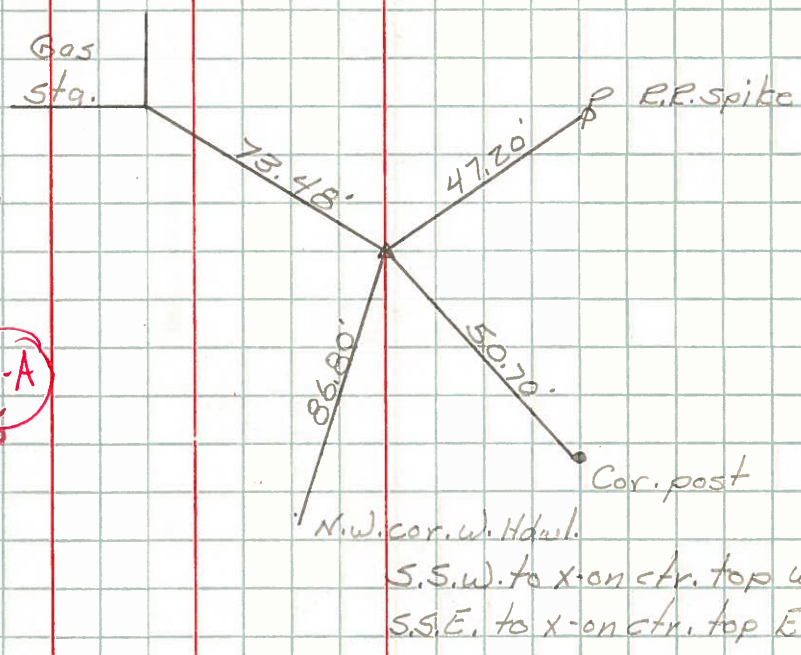
Sec. 1/4 cor. 2 1/2 mile E.  
Sta. 131+82.91  
Mon.  
N 1/4 Sec #14

#115



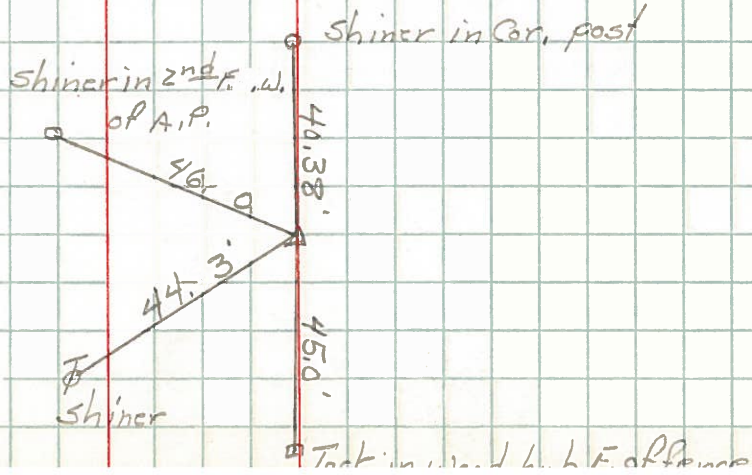
Sec. Cor. 3. mile E.  
Sta. 158+23.85  
Stone - mon.  
N.E. Cor Sec #14

#116



Iron pipe on 3 1/2 mi.  
Sta. 184+74.09  
I.P. 11 N. of Sec. 1/4 cor.  
Mon.  
N 1/4 Sec. 13

#117





PERSONNEL TITLE PERSONNEL TITLE

COUNTY Fulton

DATE

S. R. #2 & 20 RH.

WEATHER

SEC.

TEMP.

DESCRIPTION

LEFT

CENTER LINE

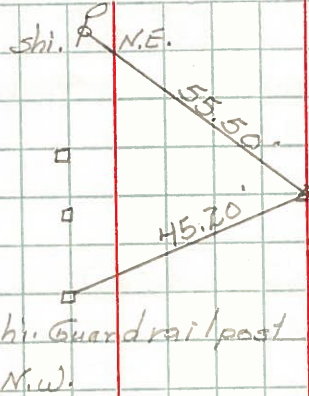
RIGHT

JOB NO.

10-24-61 W. Knepper

5/4 post sec. 11  
1/2 mi. west of  
W. corp. Delta  
Iron pin

#81



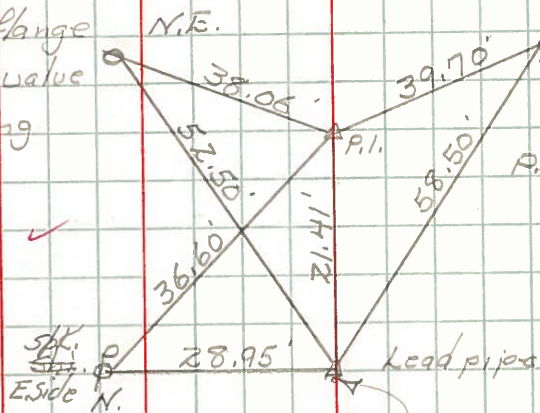
shi. Guard rail post  
S.S.E.

shi. Guard rail post  
S.W.

S. Minge flange  
East on 18" Gas Valve  
Housing

S.E. cor. Sec. 11 & Rd. S.  
West corp. line  
Delta.

#82



Near side Fire Hyd  
E.S.E.

P.I. Hole in conc. pavement

Lead pipe

Sta. 1009+00.8