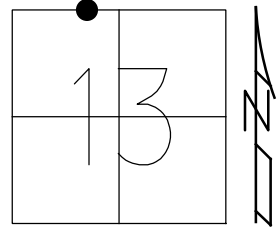


O.D.O.T. DISTRICT 2 SURVEY OFFICE (USE ONLY)

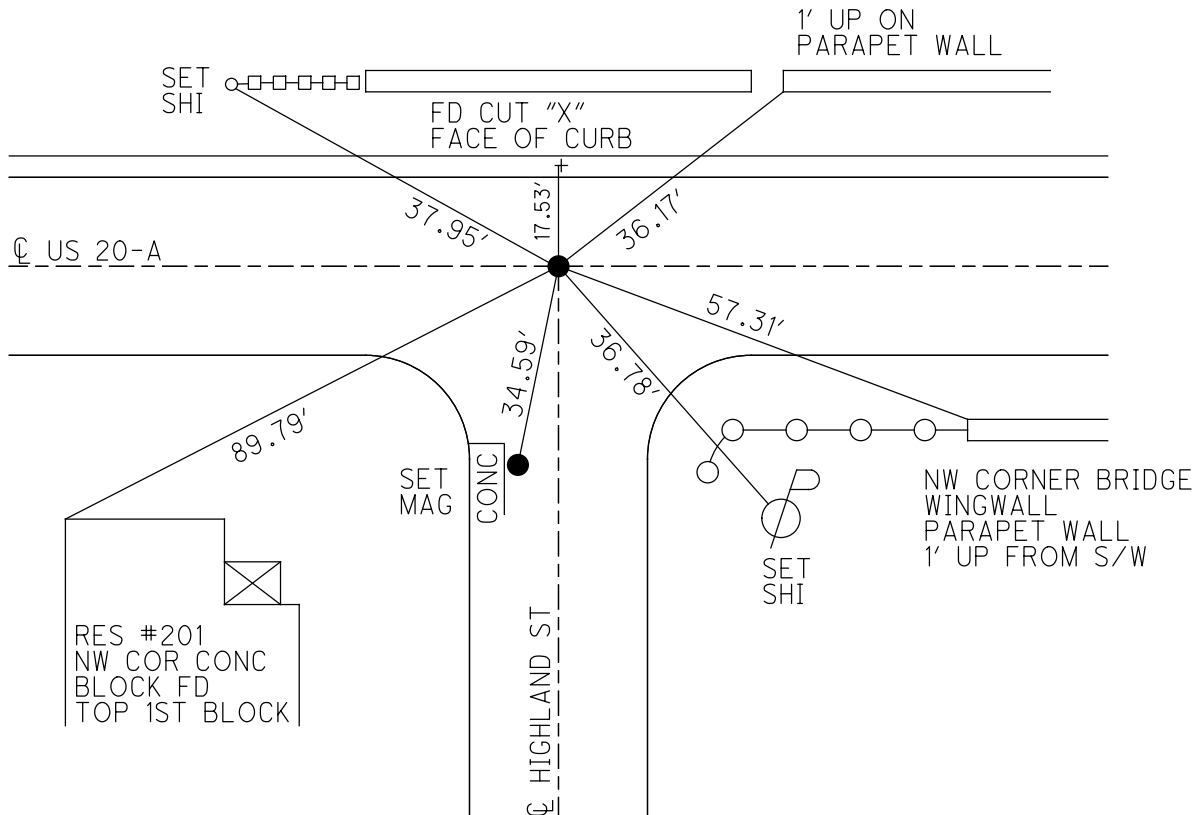
PERSONNEL \_\_\_\_\_ REFERENCE NO. 39 B SHEET 2 OF 14  
 NOTES NIESE DATE 4-23-21 ROUTE US 20 A  
 H.C. AUBLE WEATHER CLOUDY COUNTY FULTON  
 R.C. NIESE TEMP. 50° TOWNSHIP YORK  
 DWG BY AUBLE PID 101295 SECTION 13  
 T 7 N R 7 E

TYPE MONUMENT MAG/WASHER  
 ON SURFACE - ~~BELOW~~ ON  
 OFFSET 0 PAVEMENT ON LT : RT  
- TO - EDGE PAVEMENT  
 STATION: 1026+58



HORIZ.DATUM: NAD83(2011) GEOID: 12A  
 GRID: NORTHING: 698391.517 EASTING: 1554925.957

RECORD:  
 SET MAG/WASHER  
 12/29/03, RGN  
 FD MAG/WASHER  
 REFB39  
 1-9-20, JLL  
 SET MAG/WASHER  
 10-6-21, DSA



O.D.O.T. DISTRICT 2 SURVEY OFFICE (USE ONLY)

PERSONNEL \_\_\_\_\_

REFERENCE NO. 39 B

SHEET 2 OF 14

NOTES CANTERBURY

DATE 8/14/03

ROUTE US 20 A

H.C. NUHFER

WEATHER SUNNY

COUNTY FULTON

R.C. ZEBROWSKI

TEMP. 80°

TOWNSHIP YORK

DWG BY NIESE

PID \_\_\_\_\_

SECTION 13

T 7 N R 7 E

TYPE MONUMENT P.K. NAIL

ON SURFACE - ~~BELOW~~ ON

OFFSET Q PAVEMENT ON LT : RT

- TO - EDGE PAVEMENT

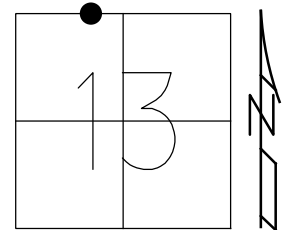
STATION: 1026+58

HORZ.DATUM: -

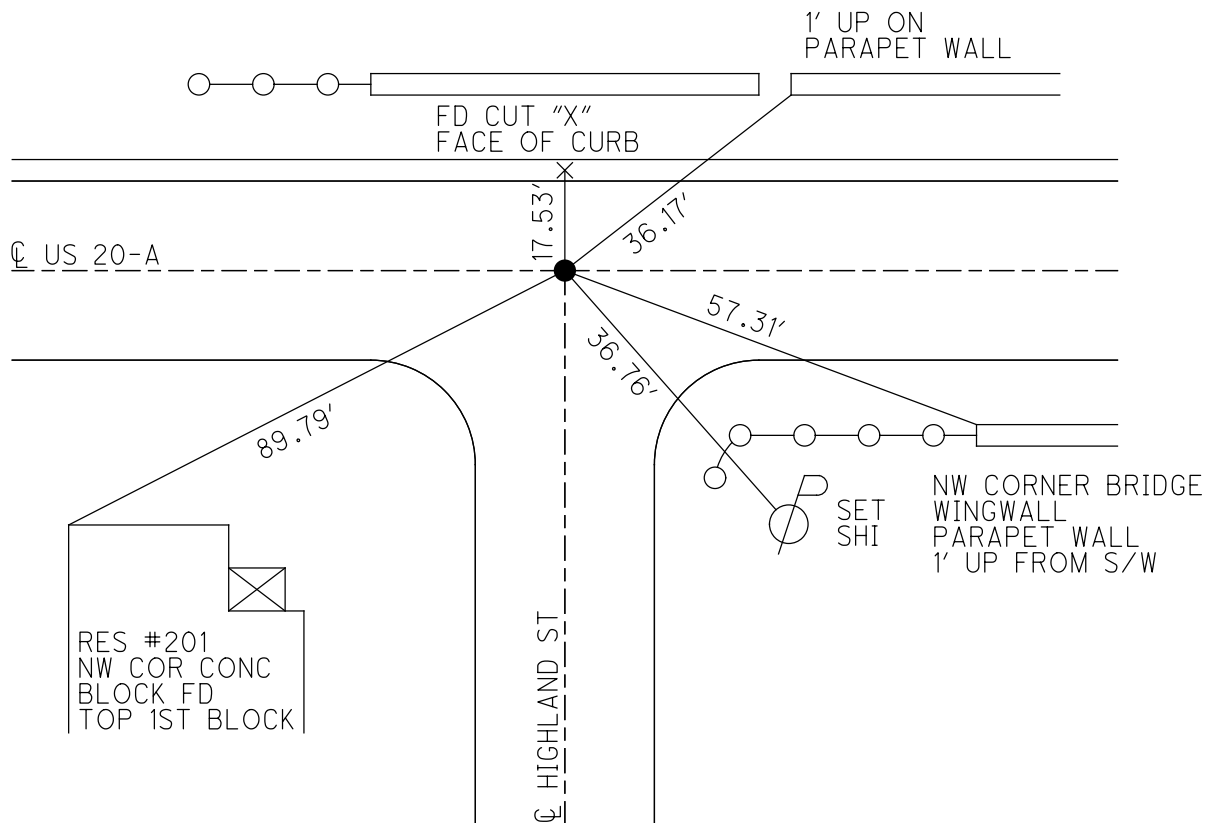
GEOID: -

GRID: NORTHING: -

EASTING: -



RECORD:  
SET MAG/WASHER  
12/29/03, RGN



# O.D.O.T. DISTRICT 2 SURVEY OFFICE

PERSONNEL \_\_\_\_\_

REFERENCE NO. 39-B

SHEET 3 OF 11

NOTES CANTERBURY

H.C. NUFFER

R.C. ZEBROWSKI

DATE 8-14-03

WEATHER SUNNY

TEMP. +80°

ROUTE U.S. 20-A

COUNTY Fulton

TOWNSHIP York

SECTION 13

T 7 N R 7 E

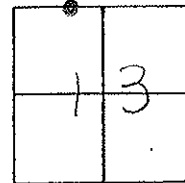
TYPE MONUMENT P.K. NAIL

ON SURFACE - BELOW SURFACE

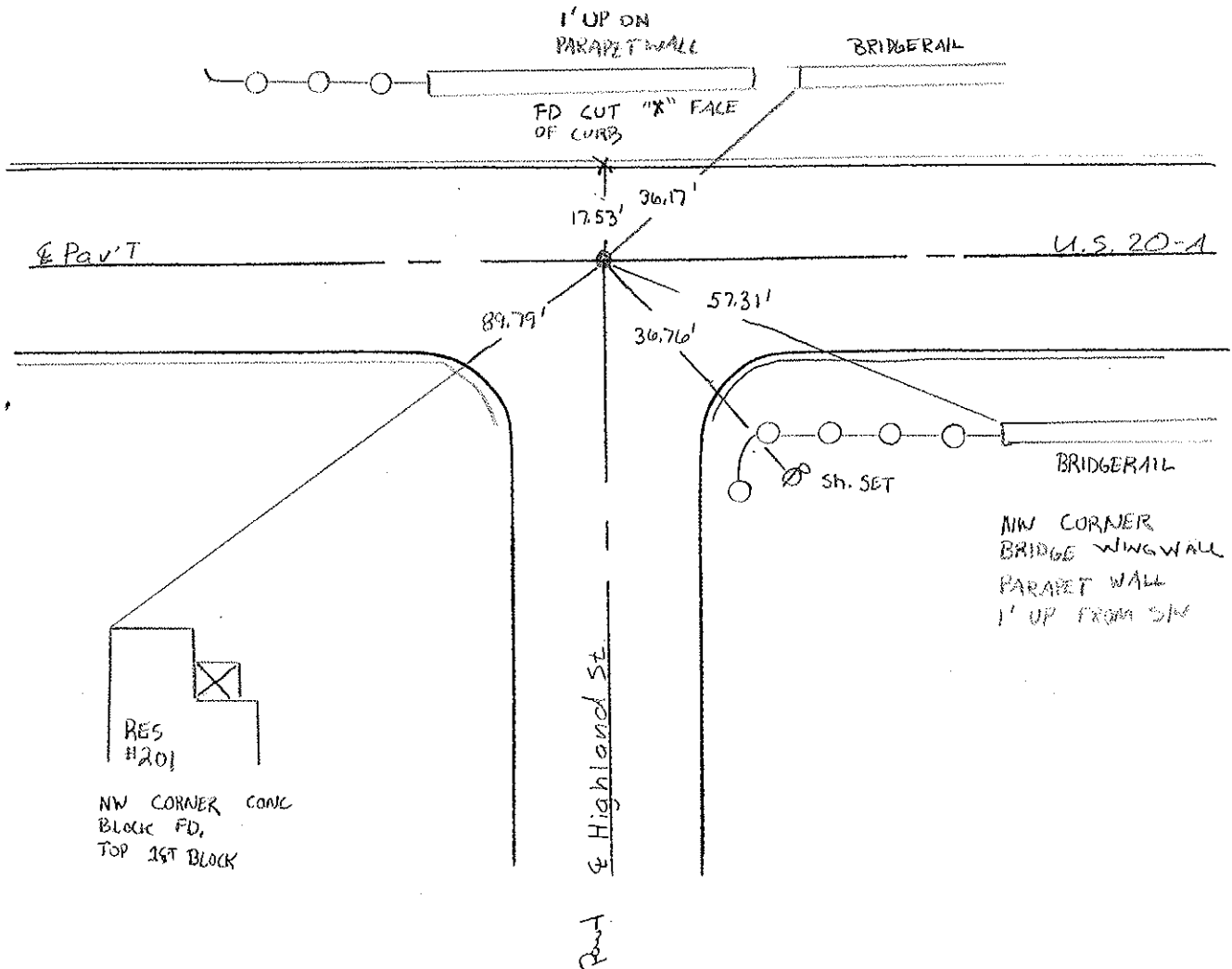
LEFT- & PAV'T. - RIGHT ON &

TO EDGE PAVEMENT

S.L.M. 1026+58



SET MAGNAIL / WASH SR  
12-29-03 RBN



# O.D.O.T. DISTRICT 2 SURVEY OFFICE

PERSONNEL

REFERENCE NO. 39-B

SHEET 17 OF 24

NOTES 1. Stone

H.C. D. Curtis

DATE 17 Sept. 86

ROUTE US#20-A

R.C. J. Householder

WEATHER Cool

COUNTY Fulton

TEMP. 59.0

TOWNSHIP York

SECTION 13

T     R    

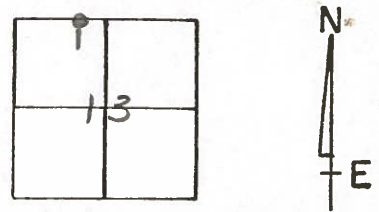
TYPE MONUMENT PK Nail

ON SURFACE - BELOW Surface

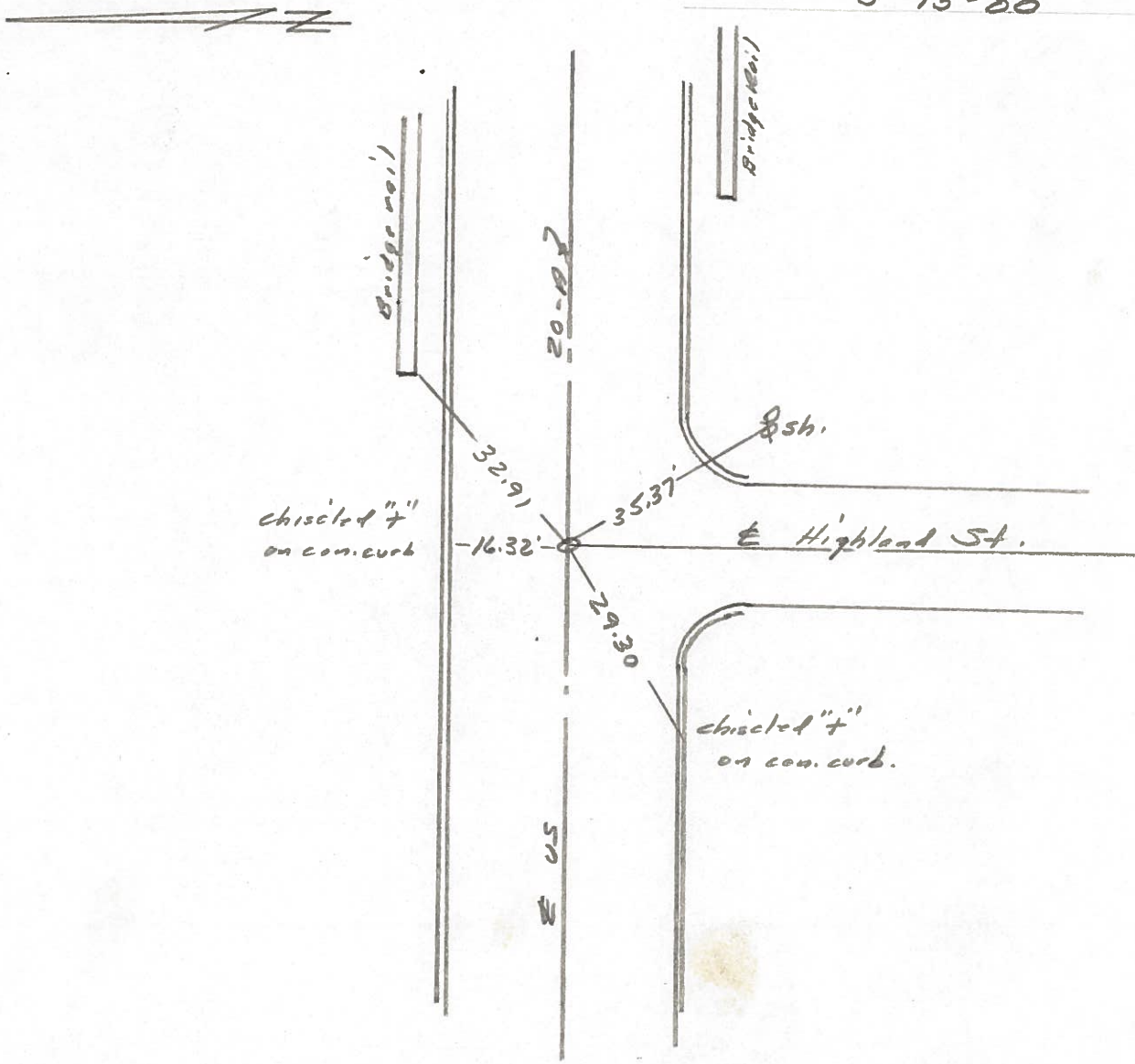
LEFT- & PAV'T. - RIGHT    

    TO     EDGE PAVEMENT

S.L.M. 1026 + 58



SET P.K. NAIL TO SURFACE  
5-13-88



PERSONNEL	TITLE	PERSONNEL	TITLE	COUNTY	DATE
W. Denno		D. Granata		Fulton	June 9, 1971
D. Curtis		P. Neuser		S. R. #20A	WEATHER Sunny, Mild
J. Miller		A. Vanyo		SEC. DELTA (VILLAGE)	TEMP. 75°

DESCRIPTION References to Control Points JOB NO. \_\_\_\_\_

