

O.D.O.T. DISTRICT 2 SURVEY OFFICE (USE ONLY)

PERSONNEL

REFERENCE NO. 39 E

SHEET 5 OF 14

NOTES NIESE

DATE 4-23-21

ROUTE US 20 A

H.C. AUBLE

WEATHER CLOUDY

COUNTY FULTON

R.C. NIESE

TEMP. 55°

TOWNSHIP YORK

SECTION 13

DWG BY AUBLE PID 101295

T 7 N R 7 E

TYPE MONUMENT MAG/WASHER

ON SURFACE - ~~BELOW~~ ON

OFFSET Q PAVEMENT ON LT : RT

- TO - EDGE PAVEMENT

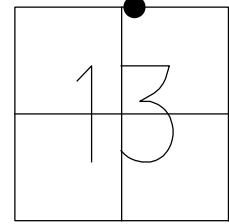
STATION: 1038+12

HORZ. DATUM: NAD83(2011)

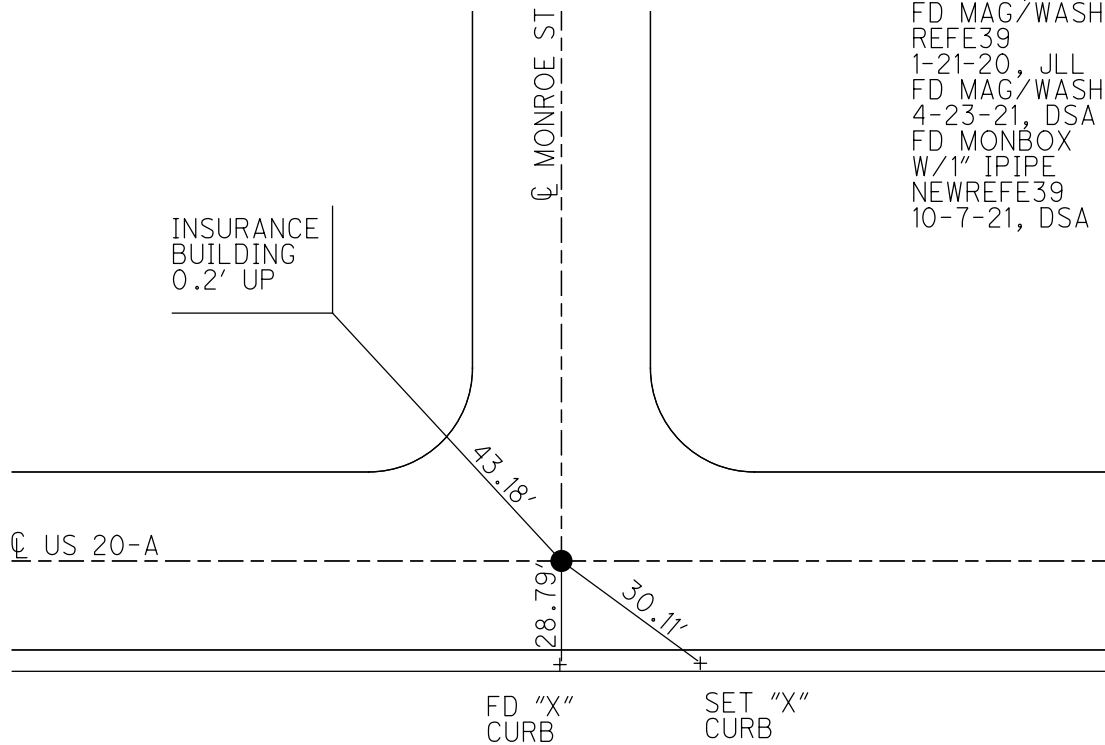
GEOID: 12A

GRID: NORTHING: 698400.577

EASTING: 1556081.890



RECORD:
 SET P.K. NAIL
 5/13/88
 SET MAG/WASHER
 1/12/04, RGN
 FD MAG/WASHER
 REFE39
 1-21-20, JLL
 FD MAG/WASHER
 4-23-21, DSA
 FD MONBOX
 W/1" IPIPE
 NEWREFE39
 10-7-21, DSA



O.D.O.T. DISTRICT 2 SURVEY OFFICE (USE ONLY)

PERSONNEL _____

REFERENCE NO. 39 E

SHEET 5 OF 14

NOTES CANTERBURY DATE 8/14/03
 H.C. NUHFER WEATHER SUNNY
 R.C. ZEBROWSKI TEMP. 80°

ROUTE US 20 A
 COUNTY FULTON
 TOWNSHIP YORK
 SECTION 13

DWG BY NIESE PID _____

T 7 N R 7 E

TYPE MONUMENT P.K. SHANK

ON SURFACE - ~~BELOW~~ ON

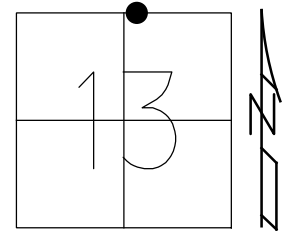
OFFSET \varnothing PAVEMENT ON LT : RT

- TO EDGE PAVEMENT

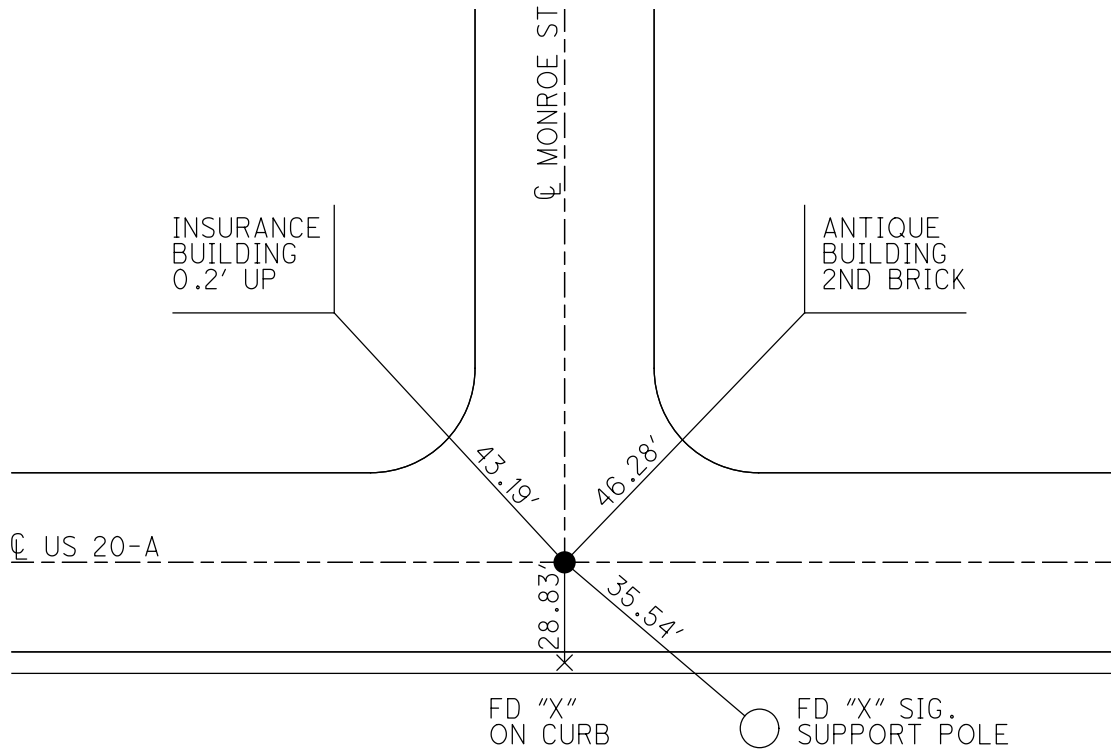
STATION: 1038+12

HORZ.DATUM: - GEOID: -

GRID: NORTHING: - EASTING: -



RECORD:
 SET P.K. NAIL
 ON SURFACE
 5/13/88
 SET MAG/WASHER
 1/12/04, RGN



O.D.O.T. DISTRICT 2 SURVEY OFFICE

PERSONNEL _____

REFERENCE NO. 39-E

SHEET 6 OF 11

NOTES CANTERBURY

H.C. NUHFER

R.C. ZEBROWSKI

DATE 8-14-03

WEATHER SUNNY

TEMP. +80°

ROUTE U.S. 20-A

COUNTY Fulton

TOWNSHIP York

SECTION 13

T7 NR 7 E

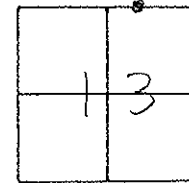
TYPE MONUMENT P.K. SHANK

ON SURFACE - ~~BELOW~~ SURFACE

LEFT-~~☉~~ PAV'T. - RIGHT _____

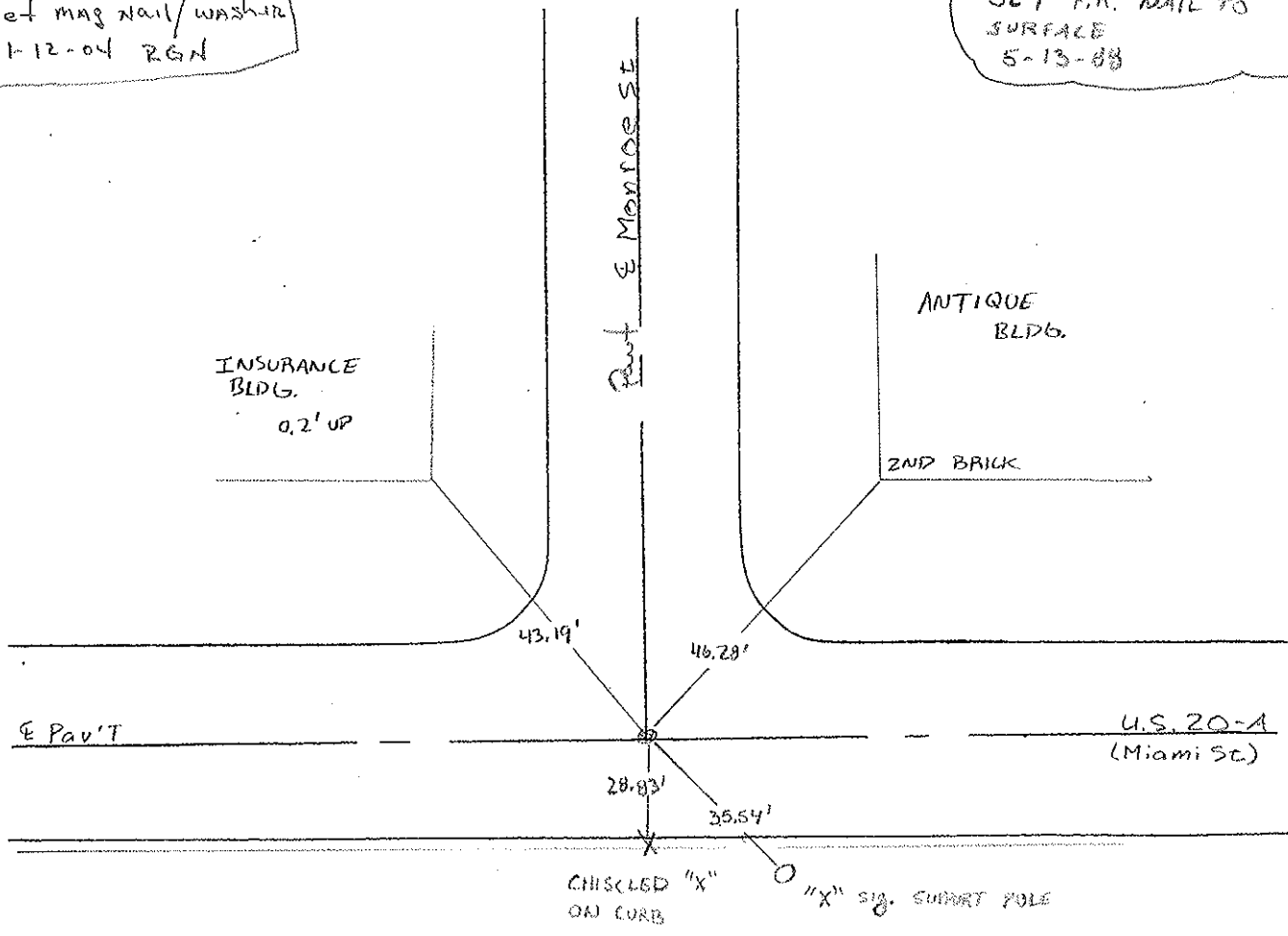
TO _____ EDGE PAVEMENT

S.L.M. 1038+12



Set mag nail/washer
1-12-04 RGN

SET P.K. MAIL TO
SURFACE
5-13-08



O.D.O.T. DISTRICT 2 SURVEY OFFICE

PERSONNEL

REFERENCE NO. 39-E

SHEET 20 OF 24

NOTES 1. Stone

H.C. D. Curtis

R.C. J. Haushalter

DATE 23 Sept. 86

WEATHER Cloudy

TEMP. 65

ROUTE US #20-A

COUNTY Fulton

TOWNSHIP York

SECTION 13

T. R.

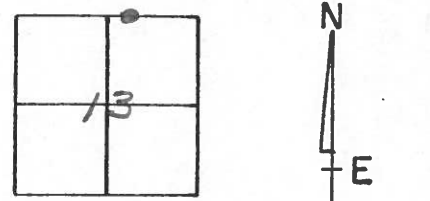
TYPE MONUMENT PK Nail

ON SURFACE - BELOW Surface

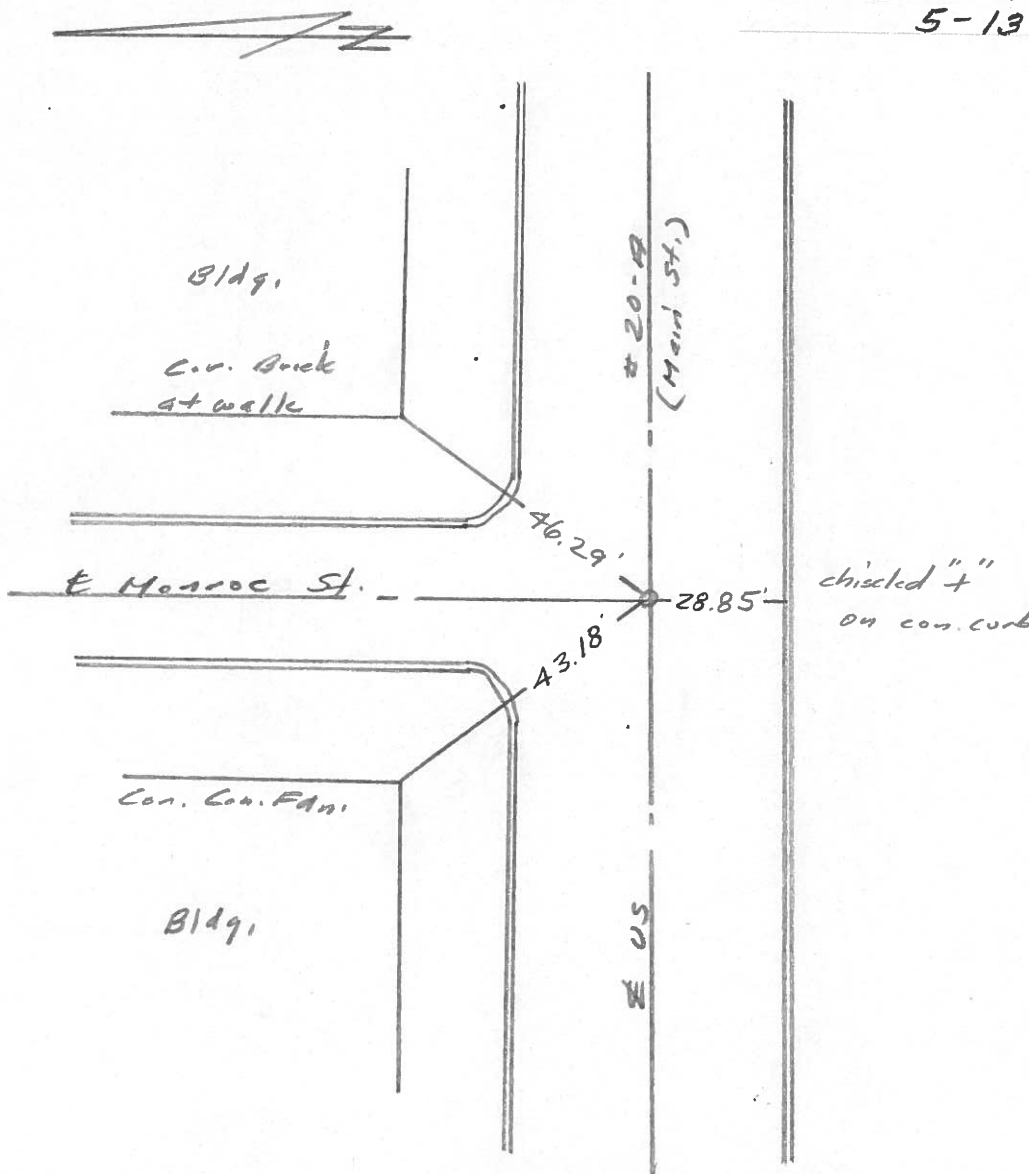
LEFT- & PAV'T. - RIGHT

TO EDGE PAVEMENT

S.L.M. 1038+12



SET P.K. NAIL TO SURFACE
5-13-88



PERSONNEL	TITLE	PERSONNEL	TITLE
W. Denna		D. Granata	
D. Curtis		P. Neuser	
		A. Vanyo	

COUNTY Fulton DATE June 9, 1971
 S. R. 20-A WEATHER sunny-mild
 SEC. _____ TEMP. 75° ±

DESCRIPTION References To Control Points JOB NO. _____

