

O.D.O.T. DISTRICT 2 SURVEY OFFICE (USE ONLY)

PERSONNEL

REFERENCE NO. 39 F

SHEET 6 OF 14

NOTES RHOADES

DATE 1-27-20

ROUTE US 20 A

H.C. LEU

WEATHER CLOUDY

COUNTY FULTON

R.C. O'DONNELL

TEMP. 34°

TOWNSHIP YORK

BALBAUGH

DWG BY AUBLE

PID 101295

SECTION 13

T 7 N R 7 E

TYPE MONUMENT 1" IPIN BENT EASTERLY

~~ON SURFACE~~ - BELOW 4"

OFFSET Q PAVEMENT 5.0' ~~LT~~ : RT

- TO - EDGE PAVEMENT

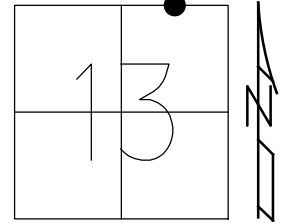
STATION: 1048+25

HORIZ.DATUM: NAD83(2011)

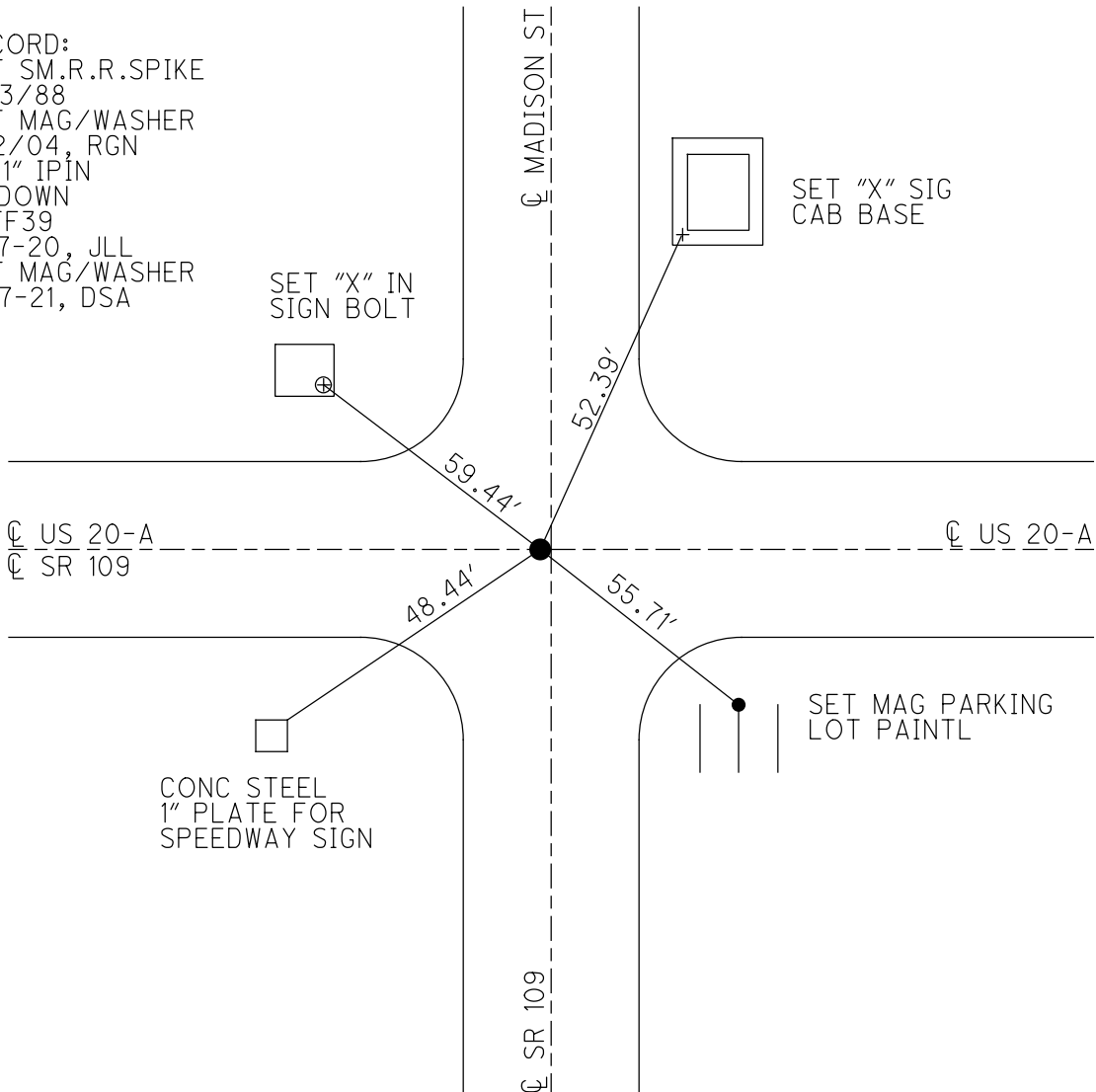
GEOID: 12A

GRID: NORTHING: 698410.405

EASTING: 1557091.581



RECORD:  
 SET SM.R.R.SPIKE  
 5/13/88  
 SET MAG/WASHER  
 1/12/04, RGN  
 FD 1" IPIN  
 4" DOWN  
 REFF39  
 1-27-20, JLL  
 SET MAG/WASHER  
 10-7-21, DSA



O.D.O.T. DISTRICT 2 SURVEY OFFICE (USE ONLY)

PERSONNEL \_\_\_\_\_

REFERENCE NO. 39 F

SHEET 6 OF 14

NOTES CANTERBURY

DATE 8/14/03

ROUTE US 20 A

H.C. NUHFER

WEATHER SUNNY

COUNTY FULTON

R.C. ZEBROWSKI

TEMP. 80°

TOWNSHIP YORK

SECTION 13

DWG BY NIESE PID \_\_\_\_\_

T 7 N R 7 E

TYPE MONUMENT 1" IROD

ON SURFACE - ~~BELOW~~ ON \_\_\_\_\_

OFFSET ☐ PAVEMENT 5.0' ~~±~~ : RT

- TO - EDGE PAVEMENT

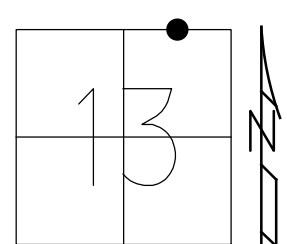
STATION: 1048+25

HORZ.DATUM: -

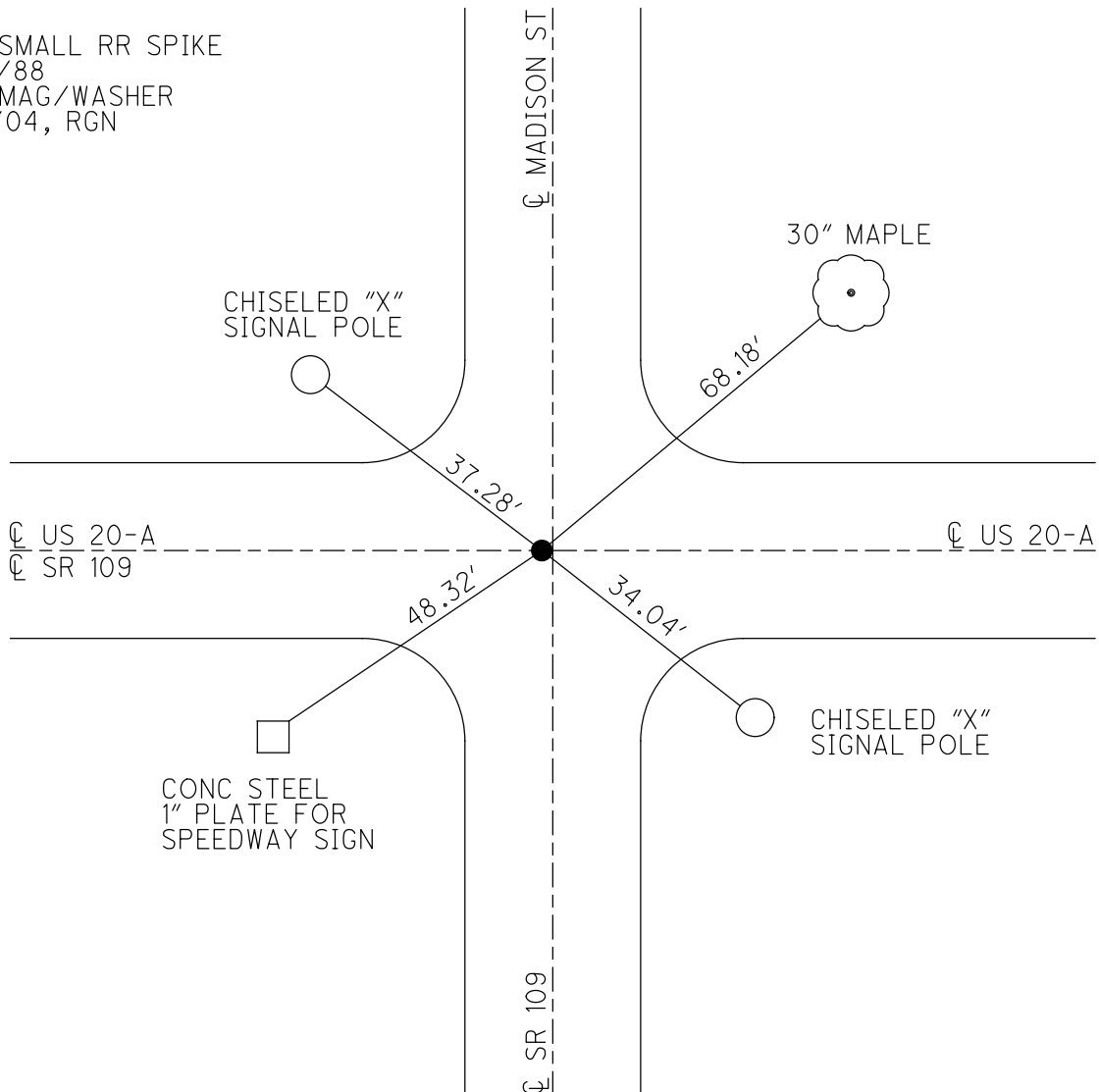
GEOID: -

GRID: NORTHING: -

EASTING: -



SET SMALL RR SPIKE  
5/13/88  
SET MAG/WASHER  
1/12/04, RGN



# O.D.O.T. DISTRICT 2 SURVEY OFFICE

PERSONNEL

REFERENCE NO. 39-F  
22 on SR. 109

SHEET 7 OF 11

NOTES CANTERBURY

H.C. NUHTER

DATE 8-14-03

ROUTE U.S. 20-A

R.C. ZEBROWSKI

WEATHER SUNNY

COUNTY Fulton

TEMP. +80°

TOWNSHIP York

SECTION 13

T. 7 N. R. 7 E.

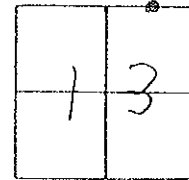
TYPE MONUMENT FD. 1" I.R.O.D.

ON SURFACE - BELOW

LEFT - PAV'T. - RIGHT 5.0' ±

TO EDGE PAVEMENT

S.I.M. 1048+25



Set mag nail/washer  
1-12-04 RGN

SET SM. R.P. SPIKE TO  
SURFACE  
5-13-88

B.P. GAS

CHISELED "X"  
SIGNAL POLE

30" MAPLE

Point - & Madison St.

37.28'

48.18'

± Pav't

SR 109 West

U.S. 20-A

48.32'

34.04'

CONC. STEEL  
1" PLATE FOR  
SPEEDWAY  
SIGN

CHISELED "X"  
SIGNAL POLE

Speedway GAS

Fire  
Station

Point -  
& S.R. 109 (S)

# O.D.O.T. DISTRICT 2 SURVEY OFFICE

PERSONNEL

REFERENCE NO. 39-F  
SR 109 = 22

SHEET 21 OF 24

NOTES 1. Stone

H.C. D. Curtis

DATE 23 Sept. 86

ROUTE US #20-A

R.C. J. Hauscholder

WEATHER Cloudy

COUNTY Fulton

TEMP. 65°

TOWNSHIP York

SECTION 13

T.     R.    

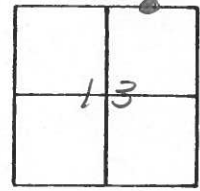
TYPE MONUMENT 1" Iron in' con.

ON SURFACE - BELOW 2" deep

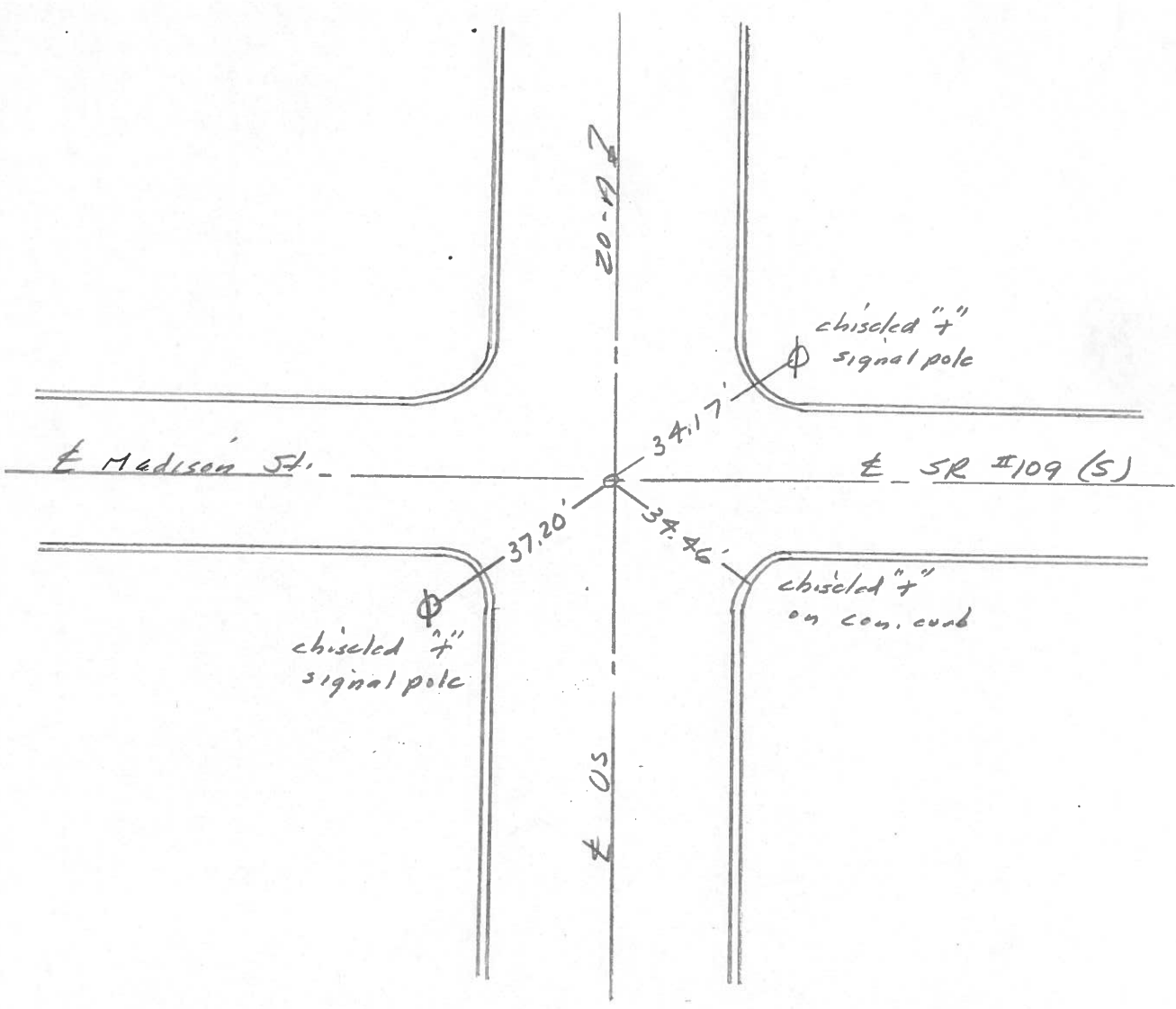
LEFT- & PAV'T. - RIGHT    

TO     EDGE PAVEMENT

S.L.M. 1048+25



SET SM. R.R. SPK. TO SURFACE  
5-13-88



PERSONNEL	TITLE	PERSONNEL	TITLE	COUNTY	DATE
W. Denno		D. Granata		Fulton	June 9, 1971
D. Curtis		P. Neuset		S. R.	20-A
		A. Vanya		WEATHER	sunny-mild
				SEC.	TEMP. 75° ±

DESCRIPTION References To Control Points JOB NO. \_\_\_\_\_

