

O.D.O.T. DISTRICT 2 SURVEY OFFICE (USE ONLY)

PERSONNEL

REFERENCE NO. 39 H

SHEET 8 OF 14

NOTES NIESE

DATE 4/27/21

ROUTE US 20 A

H.C. AUBLE

WEATHER CLOUDY

COUNTY FULTON

R.C. NIESE

TEMP. 60°

TOWNSHIP YORK

SECTION 13

DWG BY AUBLE

PID 101295

T 7 N R 7 E

TYPE MONUMENT 1" IPIN

~~ON SURFACE~~ - BELOW 2.5"

OFFSET \varnothing PAVEMENT 2.7' ~~RT~~ : RT

- TO - EDGE PAVEMENT

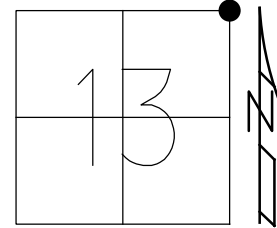
STATION: 1061+51

HORZ.DATUM: NAD83(2011)

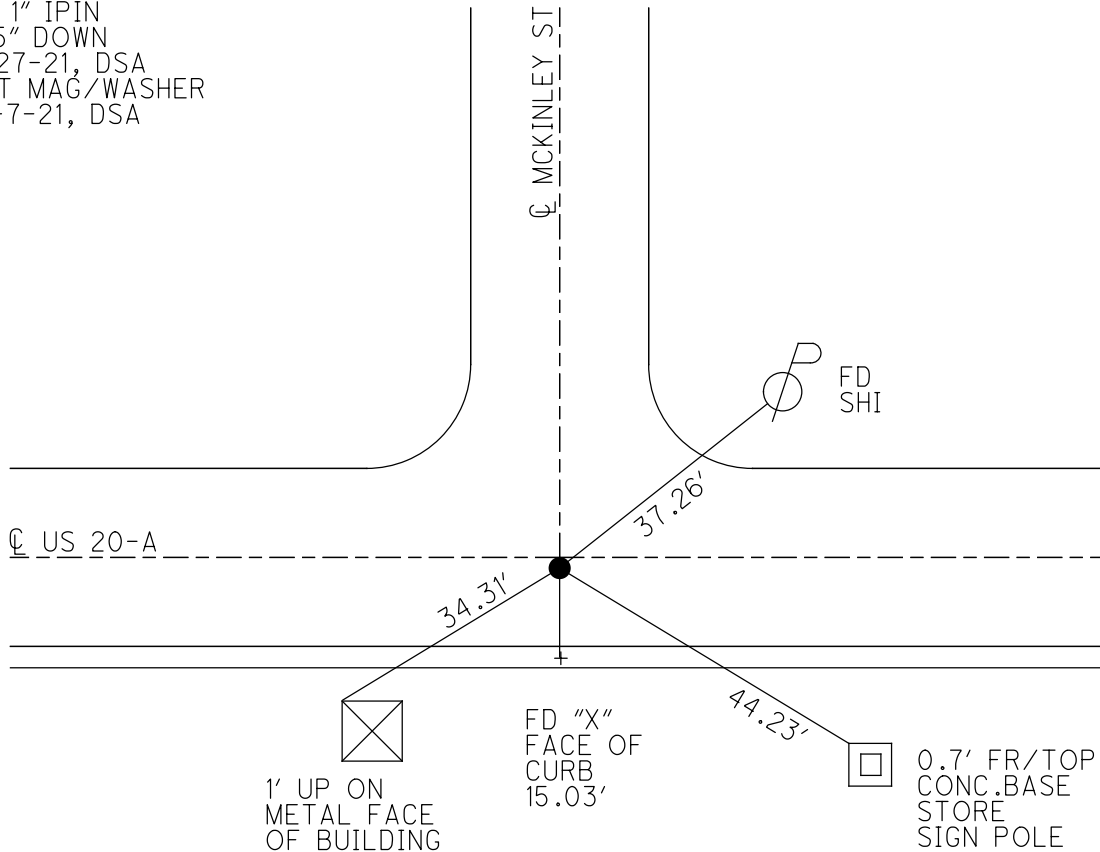
GEOID: 12A

GRID: NORTHING: 698423.093

EASTING: 1558418.788



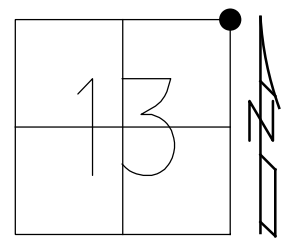
RECORD:
 SET MAG/WASHER
 1/12/04, RGN
 FD MAG/WASHER
 REFH39
 1-21-20, JLL
 FD 1" IPIN
 2.5" DOWN
 4-27-21, DSA
 SET MAG/WASHER
 10-7-21, DSA



O.D.O.T. DISTRICT 2 SURVEY OFFICE (USE ONLY)

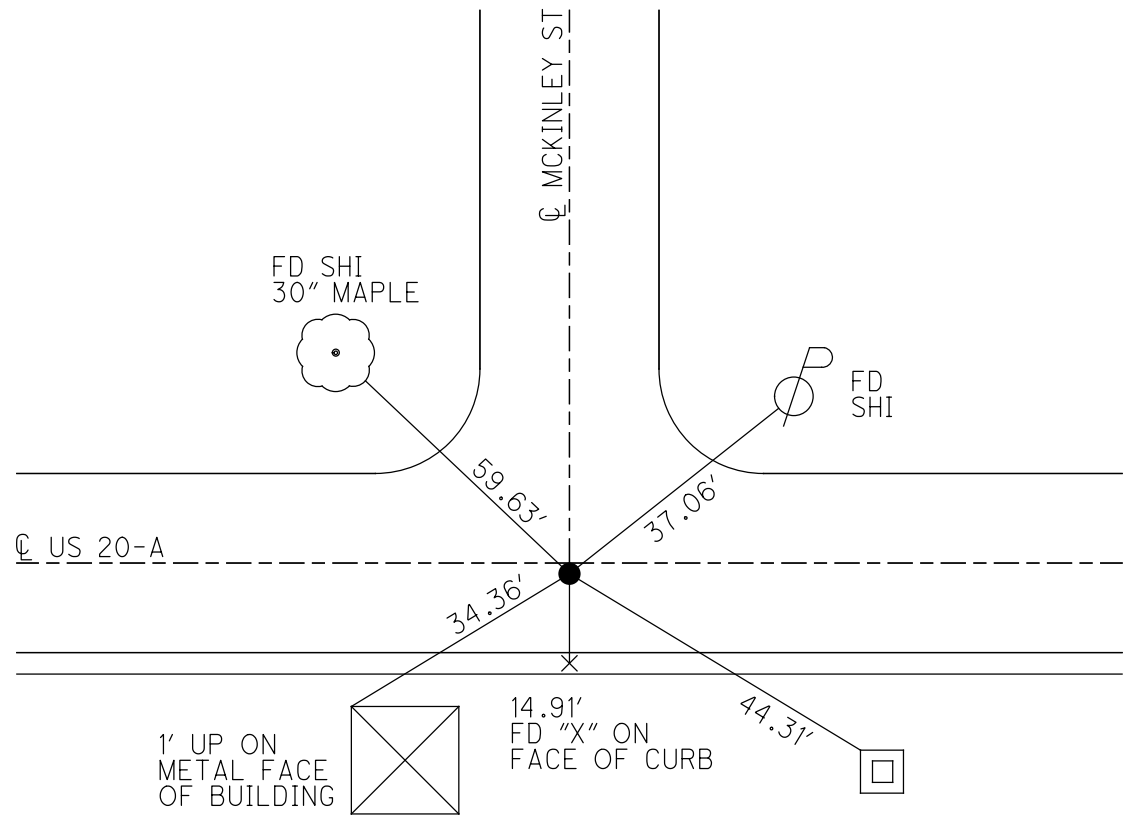
PERSONNEL _____ REFERENCE NO. 39 H SHEET 8 OF 14
 NOTES CANTERBURY DATE 8/14/03 ROUTE US 20 A
 H.C. NUHFER WEATHER SUNNY COUNTY FULTON
 R.C. ZEBROWSKI TEMP. 80° TOWNSHIP YORK
 DWG BY NIESE PID _____ SECTION 13
 T 7 N R 7 E

TYPE MONUMENT 1" IPIN
 ON SURFACE - ~~BELOW~~ ON _____
 OFFSET C PAVEMENT 2.7' ~~LT~~ : RT
 _____ TO _____ EDGE PAVEMENT
 STATION: 1061+51



HORIZ.DATUM: _____ - _____ GEOID: _____ - _____
 GRID: NORTHING: _____ - _____ EASTING: _____ - _____

RECORD:
 SET MAG/WASHER
 1/12/04, RGN



O.D.O.T. DISTRICT 2 SURVEY OFFICE

PERSONNEL _____

REFERENCE NO. 39-14

SHEET 9 OF 11

NOTES CANTERBURY

H.C. MUNIER

DATE 8-14-03

ROUTE U.S. 20-A

R.C. ZEBROWSKI

WEATHER SUNNY

COUNTY Fulton

TEMP. +80°

TOWNSHIP York

SECTION 13

T. 7 N. R. 7 E.

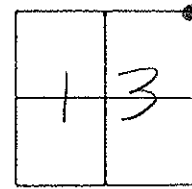
TYPE MONUMENT 1" I-ROD

ON SURFACE - BELOW _____

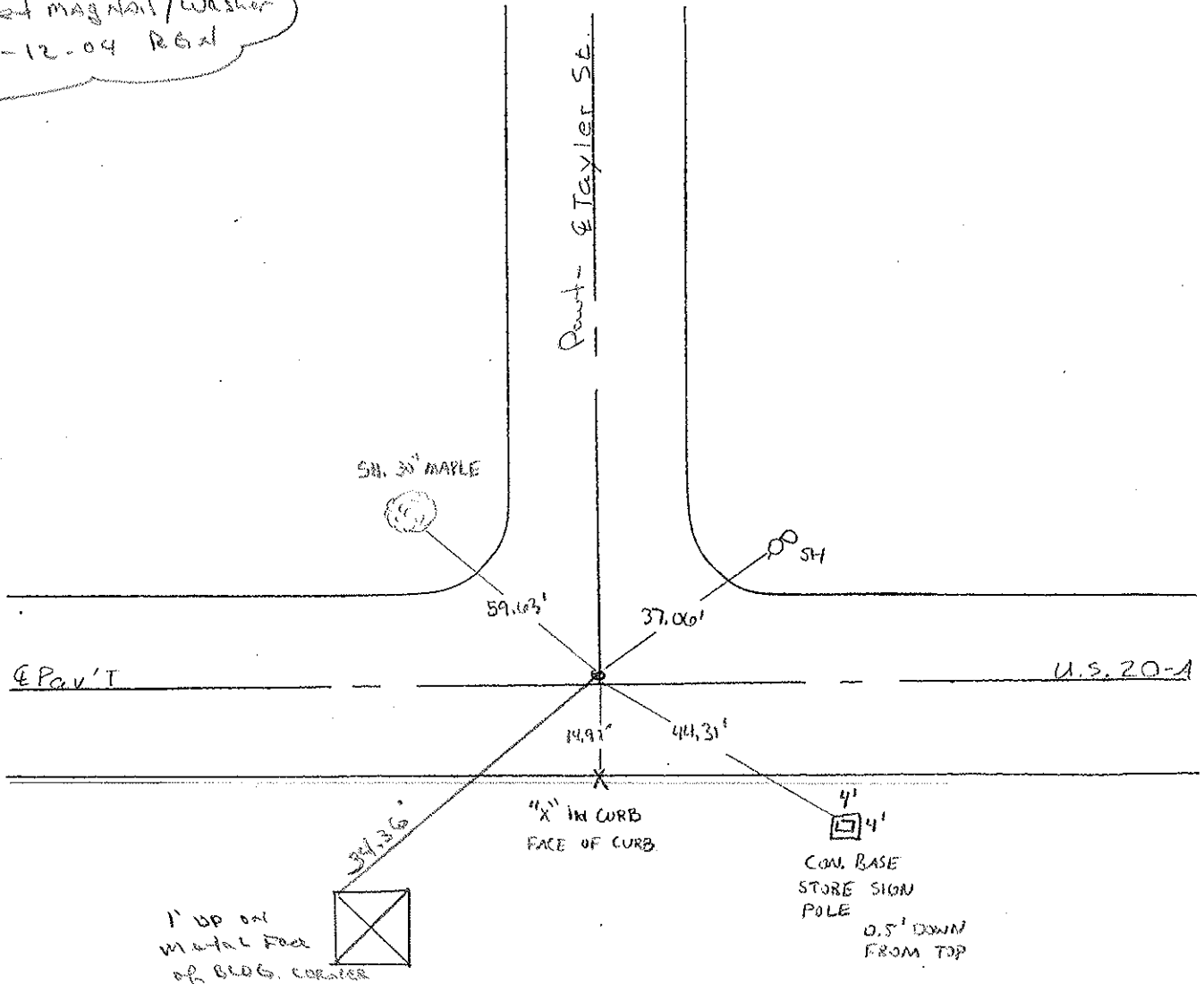
~~LEFT~~ PAV'T. - RIGHT 2.7' ±

TO EDGE PAVEMENT ON ♀ TAYLOR ST

S.L.M. 1061751



*Sed magnet/washer
1-12-04 Real*



O.D.O.T. DISTRICT 2 SURVEY OFFICE

PERSONNEL

REFERENCE NO. 39-H

SHEET 23 OF 24

NOTES 1. Stone

H.C. D. Curtis

DATE 23 Sept. 86

ROUTE US #20-A

R.C. J. Housholder

WEATHER Cloudy

COUNTY Fulton

TEMP. 70°

TOWNSHIP York

SECTION 7-12-13-18

T ___ R ___

TYPE MONUMENT 1" I. rod in cone

ON SURFACE - BELOW 3" deep

LEFT- & PAV'T. - RIGHT

___ TO ___ EDGE PAVEMENT

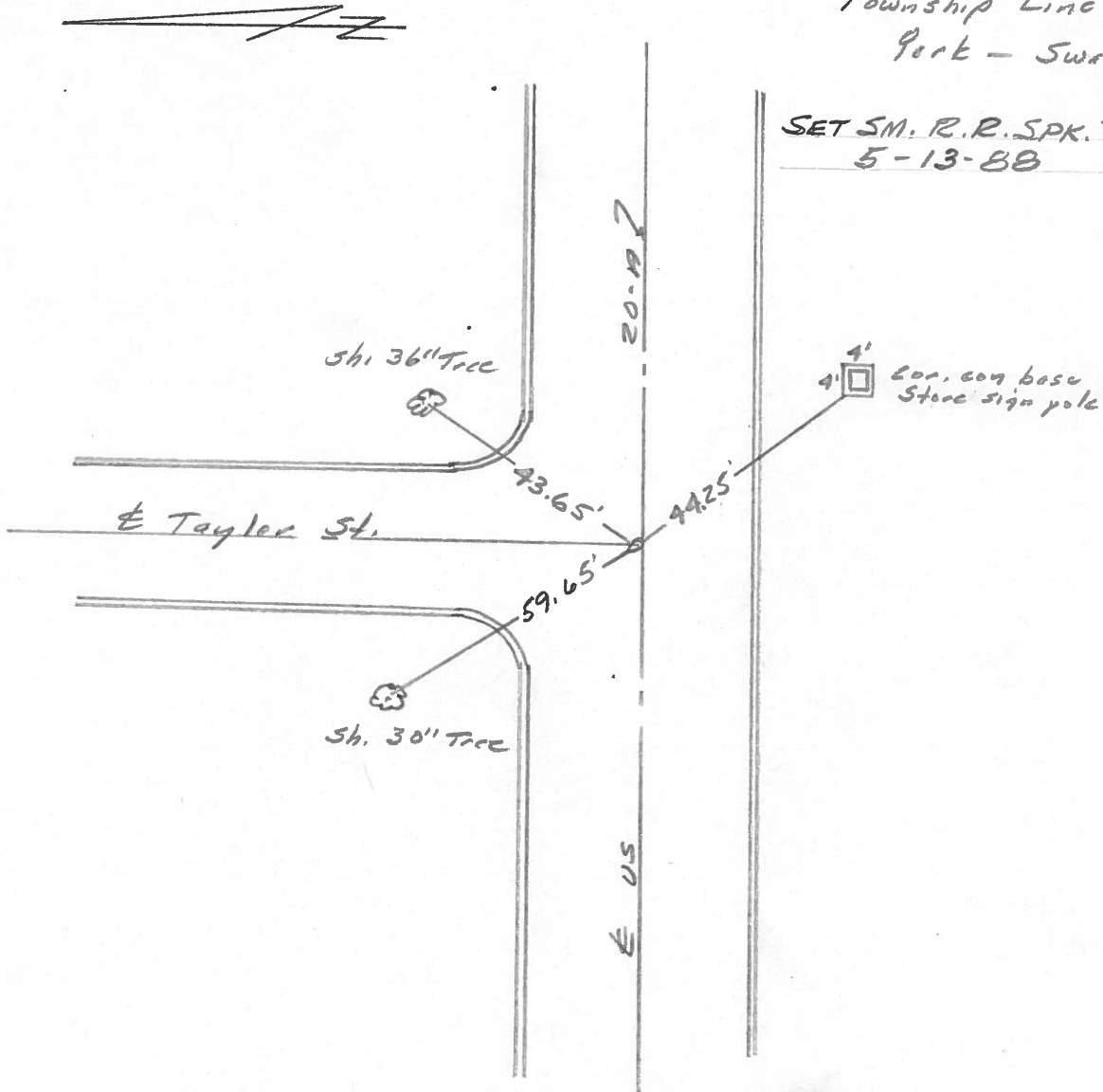
S.L.M. 1061+51

12	7
13	18



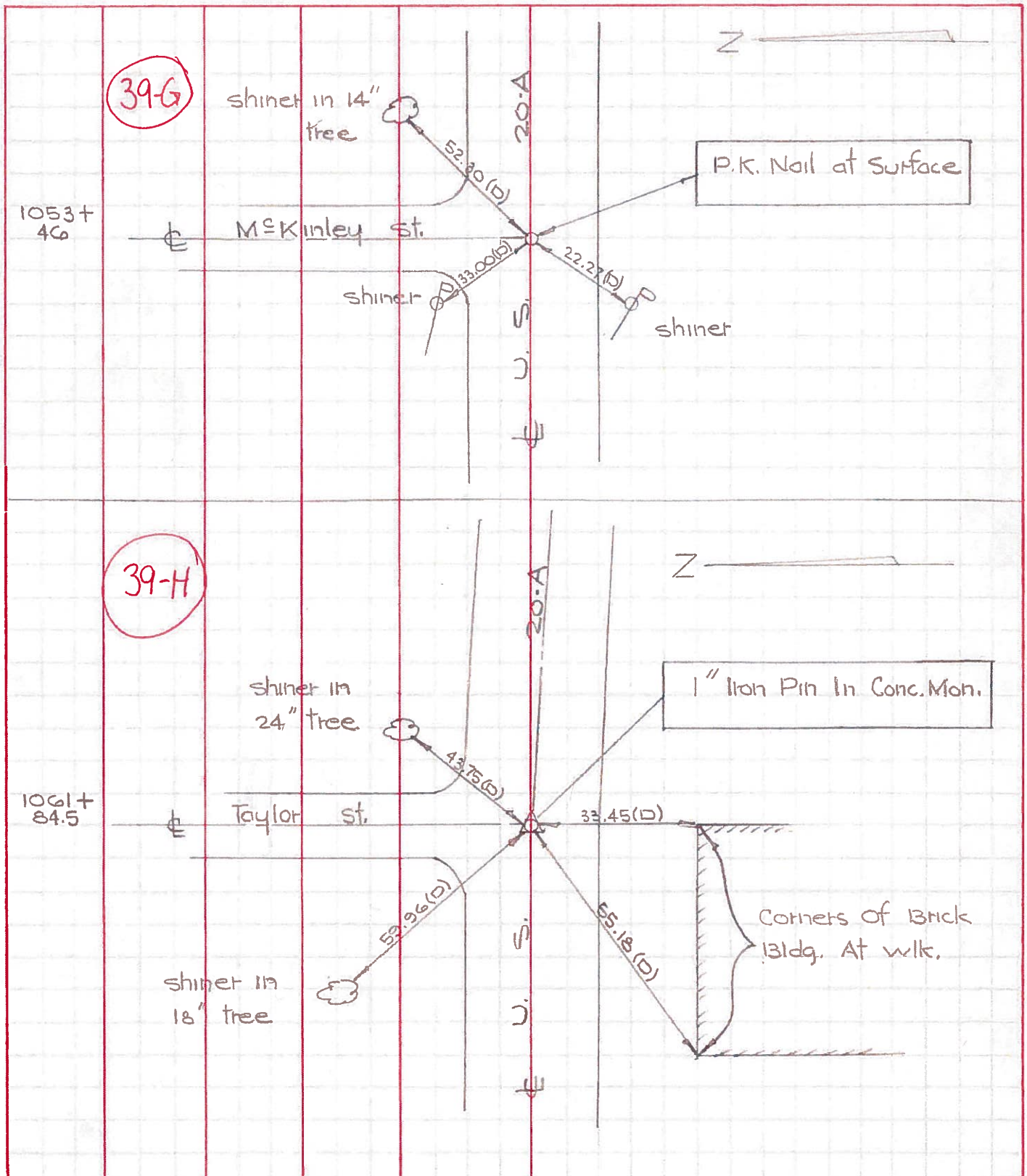
Township Line
York - Swan Creek

SET SM. R.R. SPK. TO SURFACE
5-13-88



PERSONNEL	TITLE	PERSONNEL	TITLE	COUNTY	Fulton	DATE	June 9, 1971
W. Denno		D. Granata		S. R.	20-A	WEATHER	Sunny-mild
D. Curtis		P. Neuset		SEC.		TEMP.	75° ±
		A. Vanuzo					

DESCRIPTION References To Control Points JOB NO. _____



PERSONNEL TITLE PERSONNEL TITLE

Pessafall

COUNTY Fulton

DATE 9-29-60

Wise

S. R. 20 A. & S.R. #2

WEATHER Clear

Baird

SEC. _____

TEMP. 72

Newcomb

DESCRIPTION S.R. # 2 & 20. A. East

JOB NO. _____

LEFT

CENTER LINE

RIGHT

