

O.D.O.T. DISTRICT 2 SURVEY OFFICE (USE ONLY)

PERSONNEL

REFERENCE NO. 39 I

SHEET 9 OF 14

NOTES O'DONNELL

DATE 1-27-20

ROUTE US 20 A

H.C. LEU

WEATHER CLOUDY

COUNTY FULTON

R.C. BALBAUGH

TEMP. 33°

TOWNSHIP SWAN CREEK

DWG BY AUBLE PID 101295

SECTION 18

T 7 N R 8 E

TYPE MONUMENT P.K.SHANK

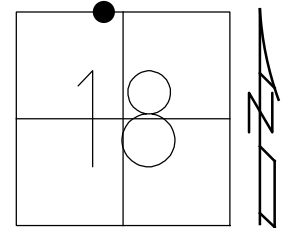
~~ON SURFACE~~ - BELOW 4"

OFFSET Q PAVEMENT ON LT : RT
13.0' TO RT EDGE PAVEMENT

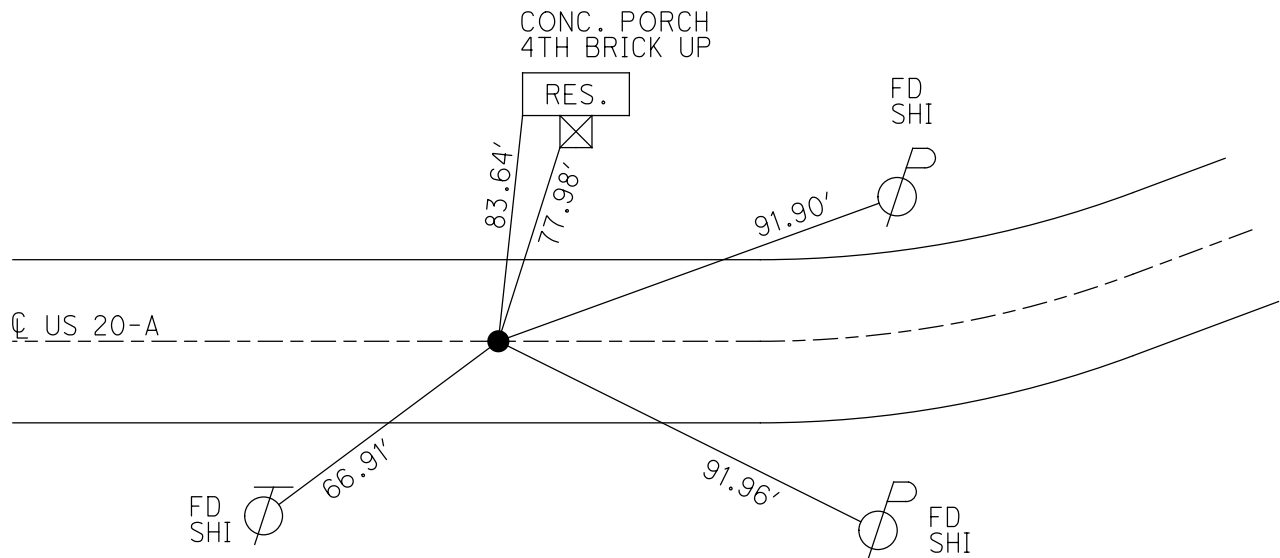
STATION: 1083+13

HORZ.DATUM: NAD83(2011) GEOID: 12A

GRID: NORTHING: 698388.161 EASTING: 1560579.498



RECORD:
 SET MAG/WASHER
 1/12/04, RGN
 FD P.K.SHANK
 REF139
 1/27/20, JFO
 SET MAG/WASHER
 11-1-21, DSA



O.D.O.T. DISTRICT 2 SURVEY OFFICE (USE ONLY)

PERSONNEL

REFERENCE NO. 39 I

SHEET 9 OF 14

NOTES CANTERBURY DATE 8/14/03
 H.C. NUHFER WEATHER SUNNY
 R.C. ZEBROWSKI TEMP. 80°

ROUTE US 20 A
 COUNTY FULTON
 TOWNSHIP SWAN CREEK
 SECTION 18

DWG BY NIESE PID _____

T 7 N R 8 E

TYPE MONUMENT P.K. NAIL

ON SURFACE - ~~BELOW~~ ON

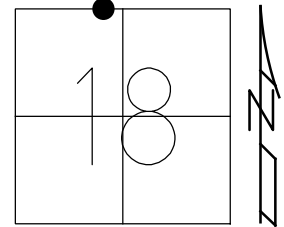
OFFSET ☉ PAVEMENT ON LT : RT

13.0' TO RT EDGE PAVEMENT

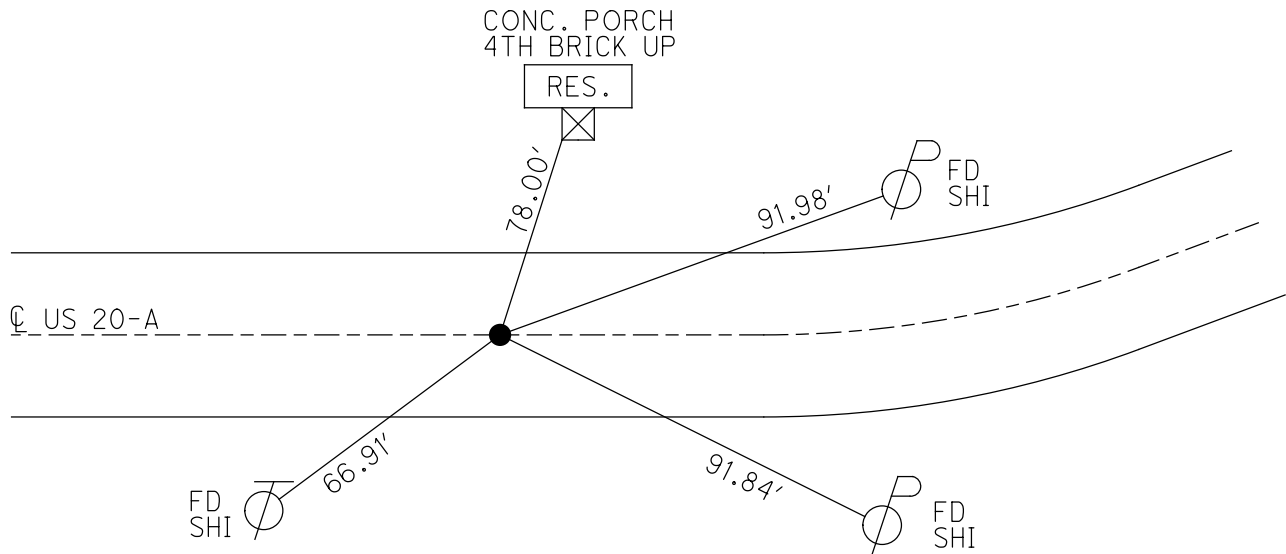
STATION: 1083+13

HORIZ.DATUM: - GEOID: -

GRID: NORTHING: - EASTING: -



RECORD:
 SET MAG/WASHER
 1/12/04, RGN



O.D.O.T. DISTRICT 2 SURVEY OFFICE

PERSONNEL _____

REFERENCE NO. 39-I

SHEET 11 OF 11

NOTES CANTERBURY

H.C. MUNIFER

R.C. ZEBROWSKI

DATE 8-14-03

WEATHER SUNNY

TEMP. +80°

ROUTE U.S. 20-A

COUNTY Fulton

TOWNSHIP Swan Creek

SECTION 18

T. 7 N. R. 8 E.

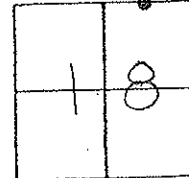
TYPE MONUMENT FD. BK. NAIL

ON SURFACE - BELOW _____

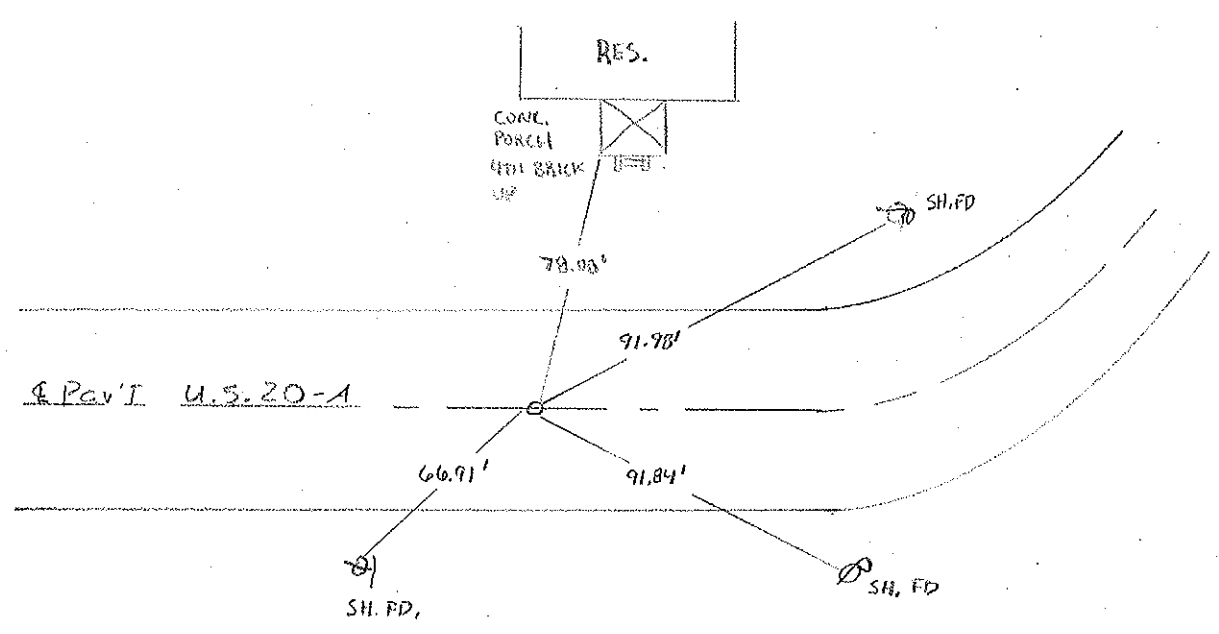
LEFT - & PAV'T. - RIGHT ON &

13.0' TO RT EDGE PAVEMENT

S.L.M. 1083+13



Set MAG NAIL/WASHER
1-12-04 RGN



O.D.O.T. DISTRICT 2 SURVEY OFFICE

PERSONNEL

REFERENCE NO. 39-I

SHEET 24 OF 24

NOTES L. Stone

H.C. J. Curtis

R.G. J. Hausholder

DATE 23 Sept. 86

WEATHER Cloudy

TEMP. 71°

ROUTE US #20-A

COUNTY Fulton

TOWNSHIP Swain Creek

SECTION 18

T R

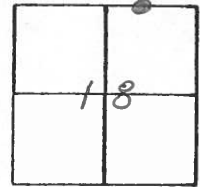
TYPE MONUMENT PK Nail

ON SURFACE - BELOW Surface

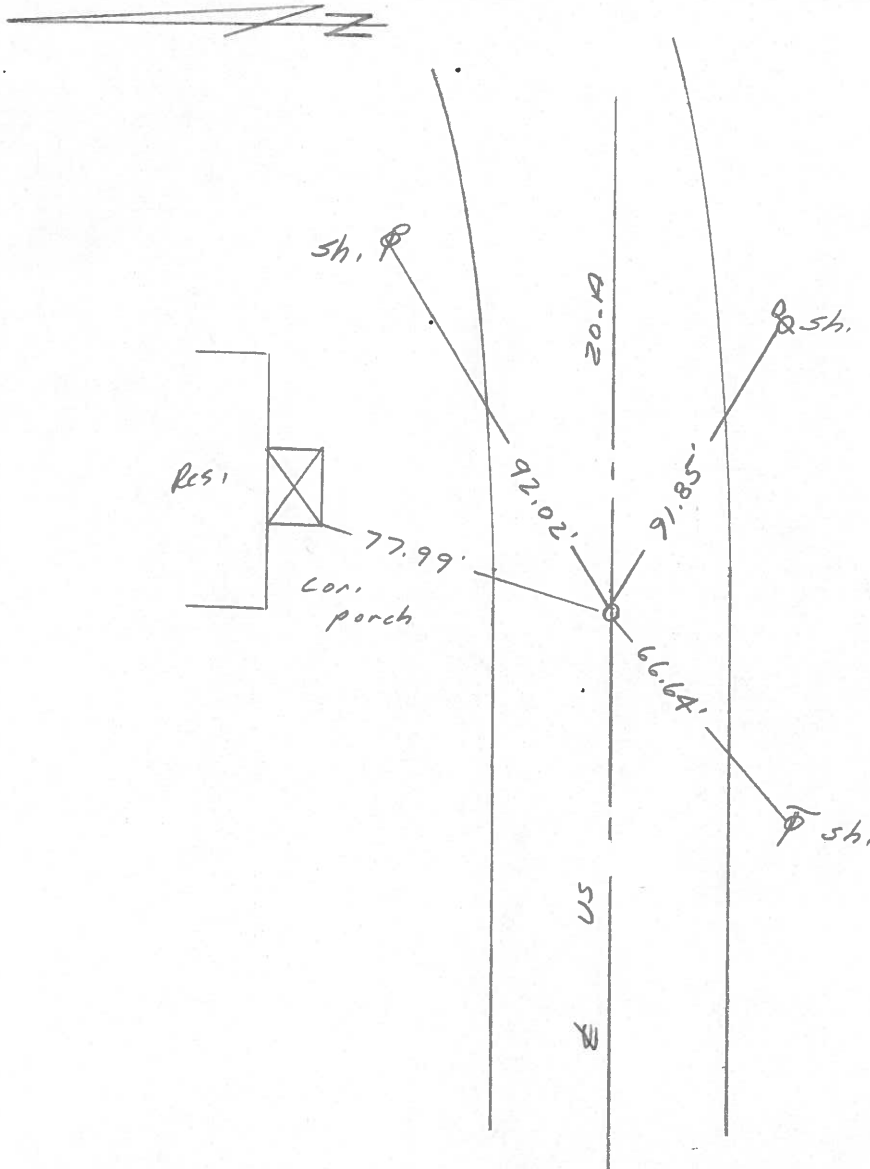
LEFT- & PAV'T. - RIGHT

TO EDGE PAVEMENT

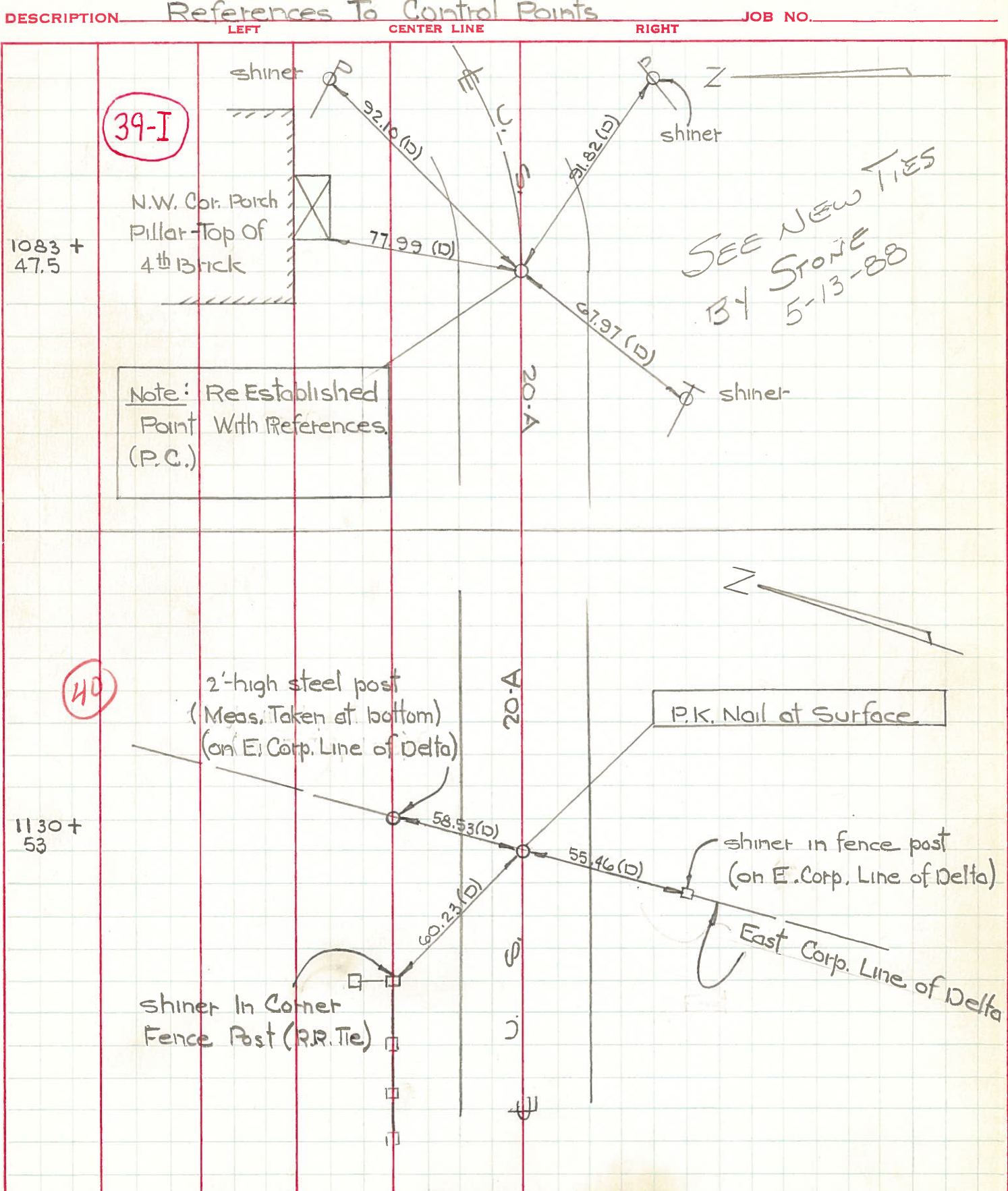
S.L.M. 1083 + 13



SET P.K. NAIL TO SURFACE
5-13-88



PERSONNEL	TITLE	PERSONNEL	TITLE	COUNTY	DATE
<u>W. Denna</u>		<u>D. Granata</u>		<u>Fulton</u>	<u>June 9, 1971</u>
<u>D. Curtis</u>		<u>P. Neuser</u>		S. R.	WEATHER
		<u>A. Vanoy</u>		<u>20-A</u>	<u>sunny-mild</u>
DESCRIPTION				SEC.	TEMP.
<u>References To Control Points</u>				<u>SWAN CREEK</u>	<u>75° ±</u>
LEFT		CENTER LINE		RIGHT	



PERSONNEL TITLE PERSONNEL TITLE

COUNTY Fulton

DATE 4-11-56

Swarden

OK 1-28-58

S. R. # 2 & 20-Alt.

WEATHER

check by Ault

SEC.

TEMP.

DESCRIPTION

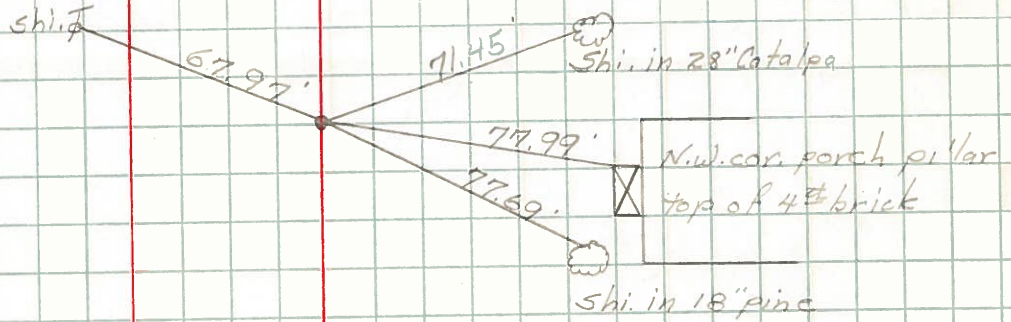
LEFT

CENTER LINE

RIGHT

JOB NO.

T.S. sta. 1083+84.17



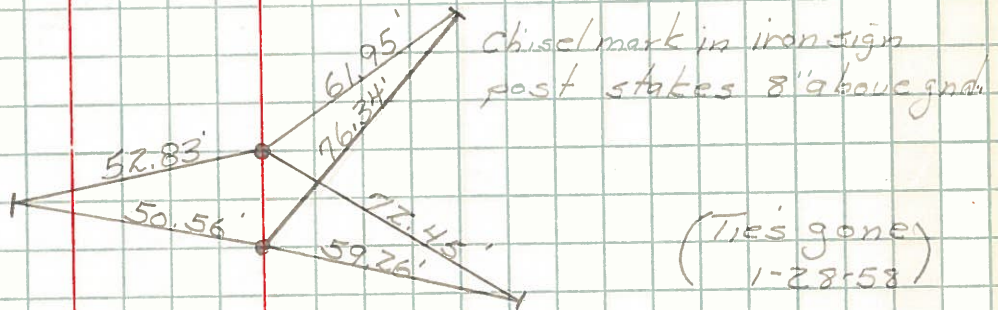
S.C. sta. 1087+34.17

C.S. Sta. 1088+08.17

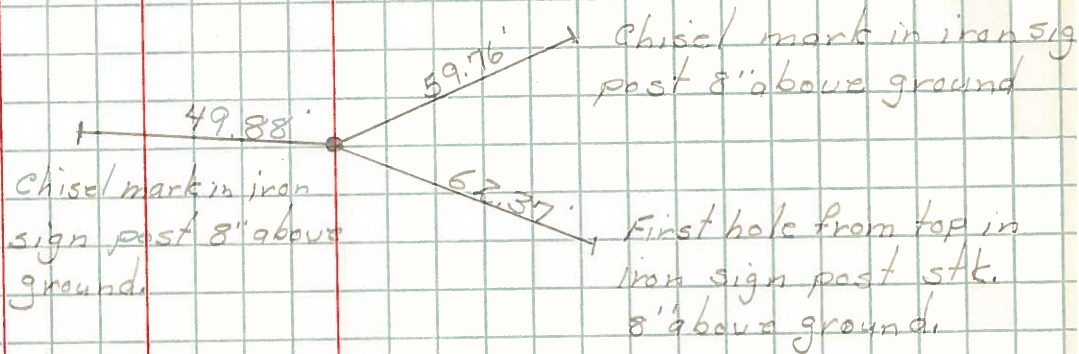


S.T. sta. 1091+58.17

T.S. sta. 1091+78.84



S.C. sta. 1095+28.84



(Ties gone) 1-28-58