

O.D.O.T. DISTRICT 2 SURVEY OFFICE (USE ONLY)

PERSONNEL

REFERENCE NO. 40

SHEET 11 OF 14

NOTES NIESE

DATE 4-27-21

ROUTE US 20 A

H.C. AUBLE

WEATHER CLOUDY

COUNTY FULTON

R.C. NIESE

TEMP. 65°

TOWNSHIP SWAN CREEK

SECTION 17

DWG BY AUBLE PID 101295

T 7 N R 8 E

TYPE MONUMENT P.K. NAIL

ON SURFACE - ~~BELOW~~ ON

OFFSET \odot PAVEMENT ON LT : RT
- TO - EDGE PAVEMENT

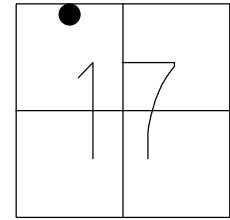
STATION: 1132+27

HORZ. DATUM: NAD83(2011)

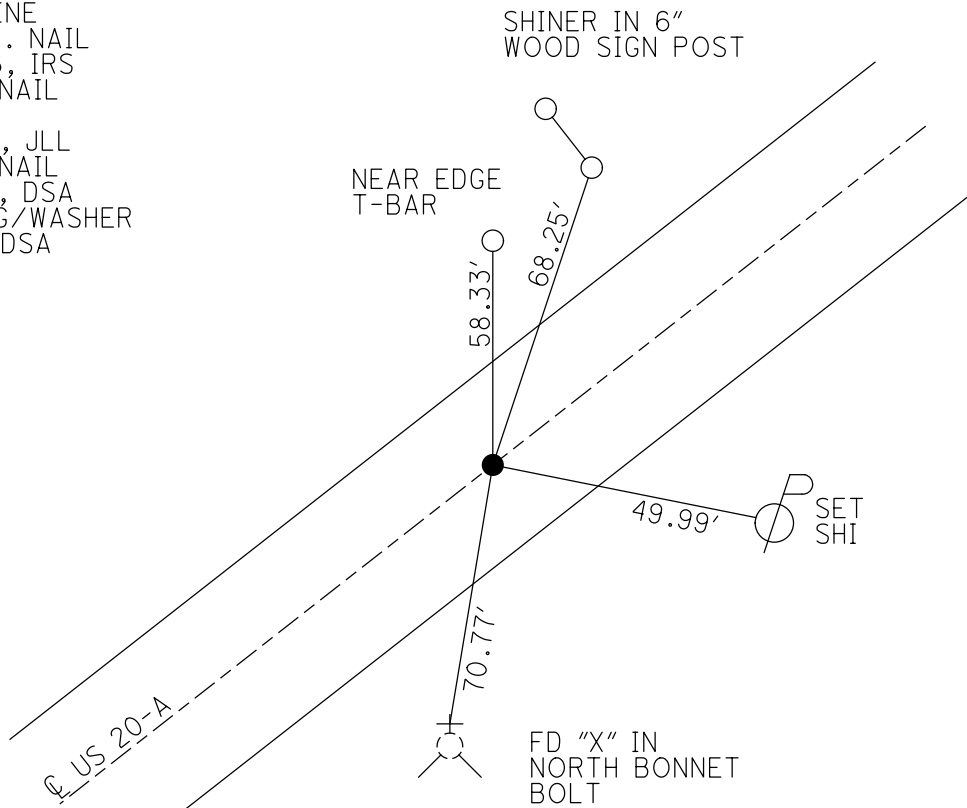
GEOID: 12A

GRID: NORTHING: 698112.181

EASTING: 1564973.884



RECORD:
 ON DELTA EAST
 CORP LINE
 SET P.K. NAIL
 9/15/86, IRS
 FD P.K. NAIL
 REF40
 1-23-20, JLL
 FD P.K. NAIL
 4-27-21, DSA
 SET MAG/WASHER
 11-1-21, DSA



O.D.O.T. DISTRICT 2 SURVEY OFFICE (USE ONLY)

PERSONNEL

REFERENCE NO. 40

SHEET 11 OF 14

NOTES STONE

DATE 3/4/86

ROUTE US 20 A

H.C. CURTIS

WEATHER COOL

COUNTY FULTON

R.C. HOUSEHOLDER

TEMP. 35°

TOWNSHIP SWAN CREEK

MICHALAK

SECTION 17

DWG BY NIESE PID _____

T 7 N R 8 E

TYPE MONUMENT P.K. NAIL

ON SURFACE - ~~BELOW~~ ON

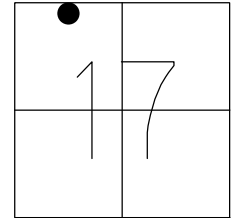
OFFSET \varnothing PAVEMENT ON LT : RT

- TO - EDGE PAVEMENT

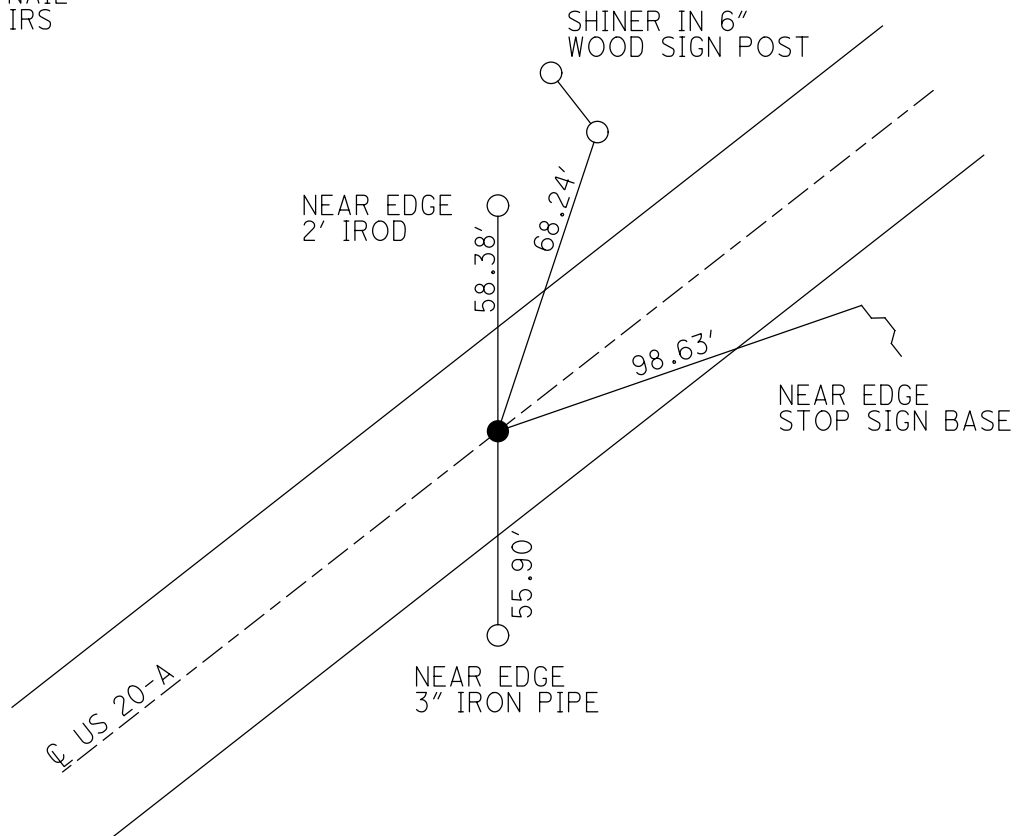
STATION: 1132+27

HORZ. DATUM: - GEOID: -

GRID: NORTHING: - EASTING: -



RECORD:
ON DELTA EAST
CORP LINE
SET P.K. NAIL
9/15/86, IRS



O.D.O.T. DISTRICT 2 SURVEY OFFICE

PERSONNEL _____

REFERENCE NO. 40

SHEET 1 OF _____

NOTES 1. Stone

H.C. D. Curtis

R.C. J. Householder

R. Michalak

DATE 4 March 86

WEATHER Coal

TEMP. 35°

ROUTE US 20-A

COUNTY Fulton

TOWNSHIP Swan Creek

SECTION 8

T _____ R _____

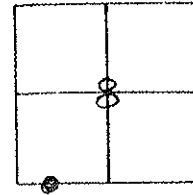
TYPE MONUMENT PK Nail

ON SURFACE - BELOW Surface

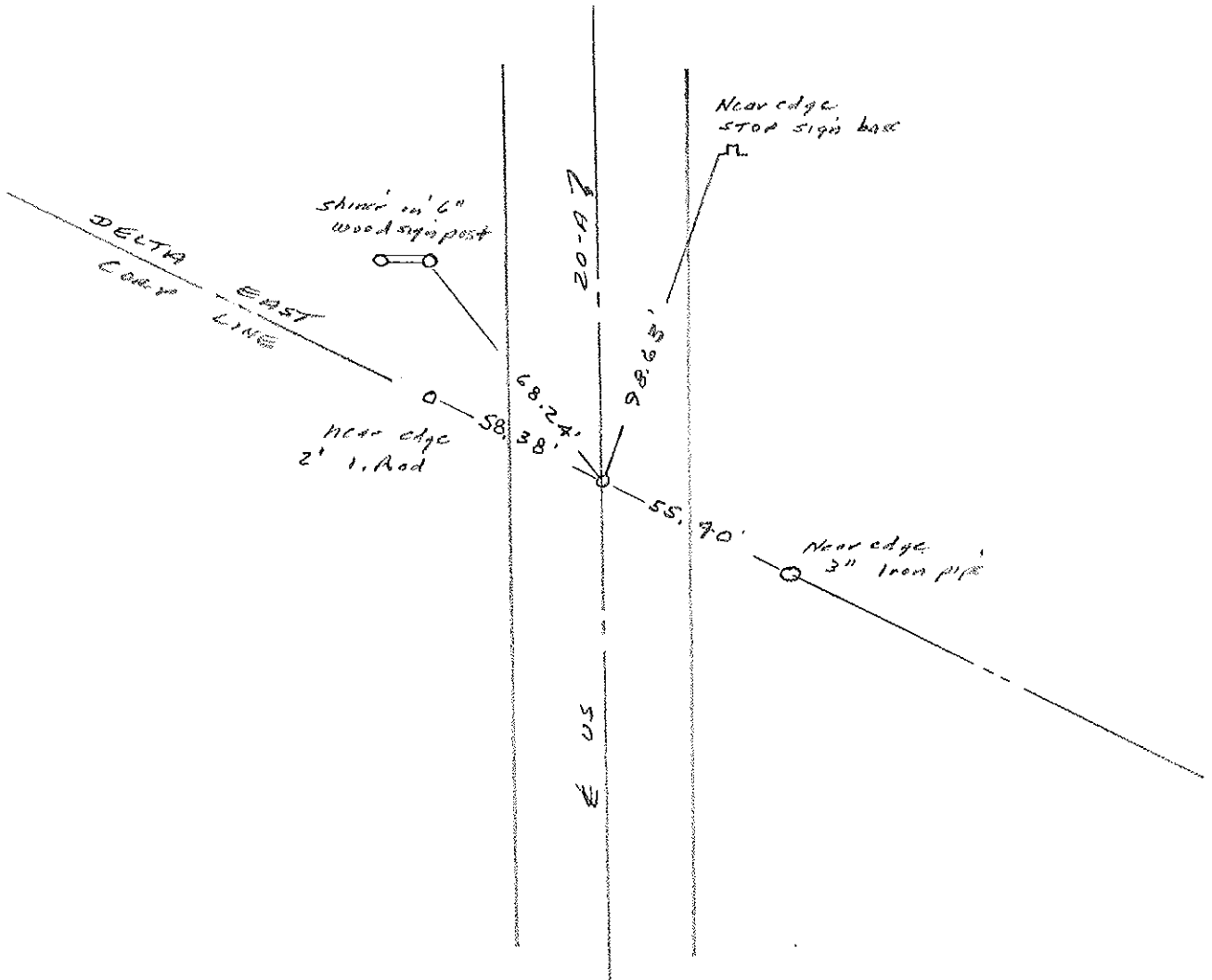
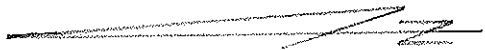
LEFT- & PAV'T. - RIGHT _____

TO _____ EDGE PAVEMENT

S.L.M. 1132+27

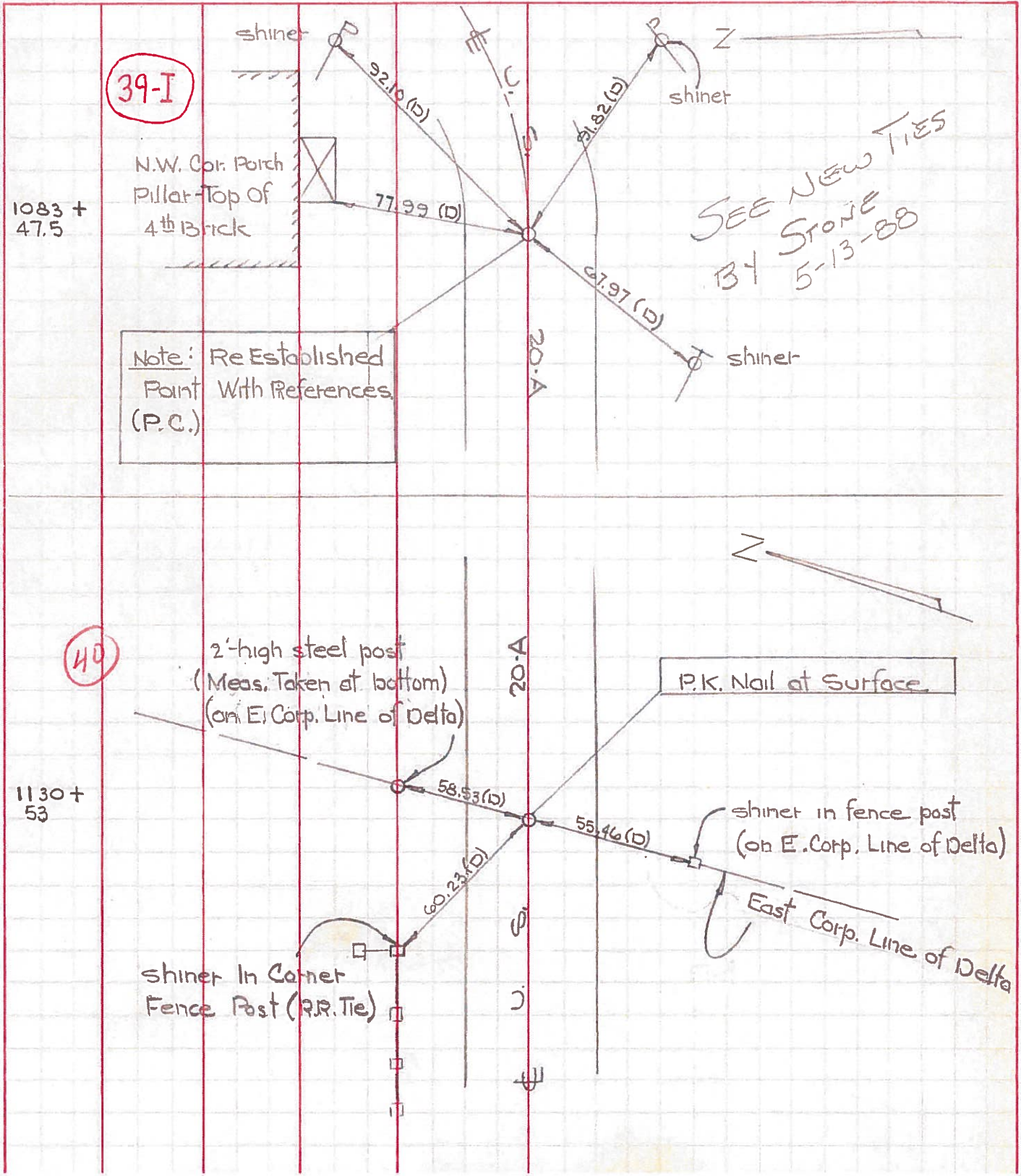


Set PK Nail 9/15/86 IRS



PERSONNEL	TITLE	PERSONNEL	TITLE	COUNTY	Fulton	DATE	June 9, 1971
W. Denno		D. Granata		S. R.	20-A	WEATHER	Sunny-mild
D. Curtis		P. Neuset		SEC.	SWAN CREEK	TEMP.	75° ±

DESCRIPTION References To Control Points LEFT CENTER LINE RIGHT JOB NO.



PERSONNEL TITLE PERSONNEL TITLE

COUNTY Fulton

DATE OK 1-28-58

S. R. #2 & 20 A/H.

WEATHER

SEC.

TEMP.

DESCRIPTION

LEFT

CENTER LINE

RIGHT

JOB NO.

C.S. Sta. 1102 + 53.17

49.65'

58.32'

58.85'

Chisel mark in top iron sign post stks.

(Ties gone) 1-28-58

Bldg.

Tacked hub approx. 3' from cor of unpainted bldg. attached to lg bldg.

Tacked hub in R.R. Flw approx. 10' from track

Tacked hub

Tacked hub

R.R. splk in old pave. leading to farm lane

R.R. splk. in pave. leading to farm lane