

O.D.O.T. DISTRICT 2 SURVEY OFFICE (USE ONLY)

PERSONNEL

REFERENCE NO. 43

SHEET 1 OF 10

NOTES NIESE

DATE 4-27-21

ROUTE US 20-A

H.C. AUBLE

WEATHER WINDY

COUNTY FULTON

R.C. NIESE

TEMP. 65°

TOWNSHIP SWAN CREEK

SECTION 9

DWG BY AUBLE

PID 101295

T 7 N R 8 E

TYPE MONUMENT R.R.SPIKE

ON SURFACE - ~~BELOW~~ ON

OFFSET Q PAVEMENT ON LT : RT

- TO - EDGE PAVEMENT

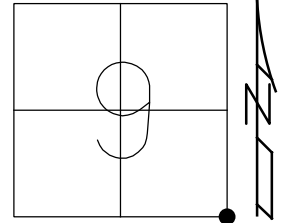
STATION: 1225+94.12

HORZ.DATUM: NAD83(2011)

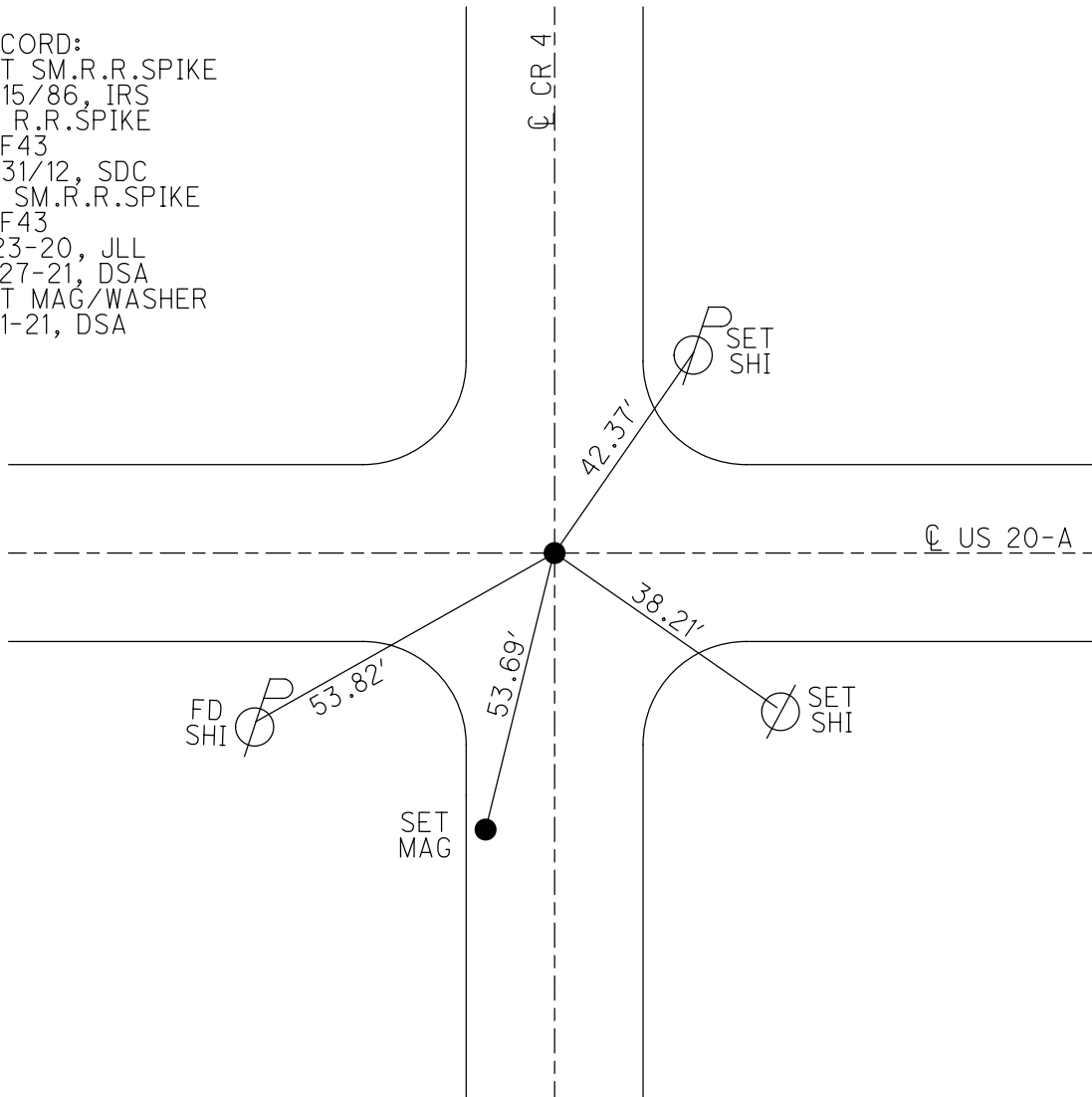
GEOID: 12A

GRID: NORTHING: 698186.708

EASTING: 1574302.170



RECORD:  
 SET SM.R.R.SPIKE  
 9/15/86, IRS  
 FD R.R.SPIKE  
 REF43  
 7/31/12, SDC  
 FD SM.R.R.SPIKE  
 REF43  
 1-23-20, JLL  
 4-27-21, DSA  
 SET MAG/WASHER  
 11-1-21, DSA



O.D.O.T. DISTRICT 2 SURVEY OFFICE (USE ONLY)

PERSONNEL \_\_\_\_\_ REFERENCE NO. 43 SHEET 1 OF 10

NOTES STONE DATE 3/04/86 ROUTE US 20-A

H.C. CURTIS WEATHER COOL COUNTY FULTON

R.C. HOUSEHOLDER TEMP. 36° TOWNSHIP SWAN CREEK

MICHALAK SECTION 9

T 7 N R 8 E

TYPE MONUMENT \_\_\_\_\_ R.R.SPIKE \_\_\_\_\_

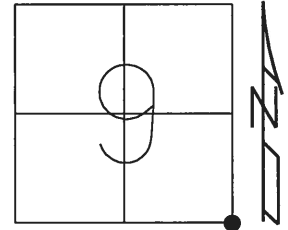
~~ON SURFACE~~ - BELOW 1"

LEFT - Q PAV'T - RIGHT ON

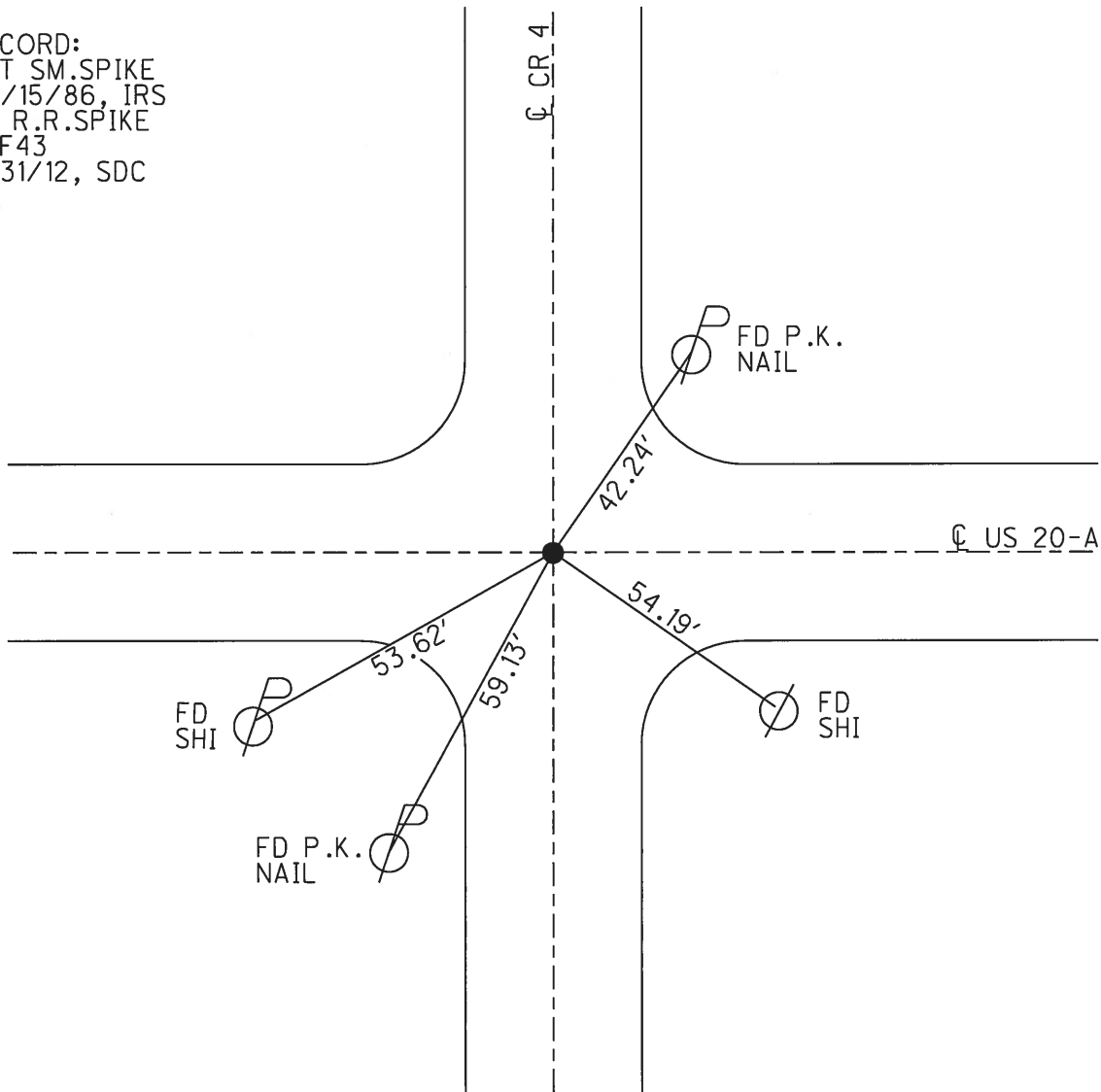
- TO - EDGE PAVEMENT

S.L.M. 1225+94.12

Grid: Northing: 698186.707 Easting: 1574302.125



RECORD:  
SET SM.SPIKE  
09/15/86, IRS  
FD R.R.SPIKE  
REF43  
7/31/12, SDC



# O.D.O.T. DISTRICT 2 SURVEY OFFICE

PERSONNEL \_\_\_\_\_

REFERENCE NO. 43

SHEET 5 OF \_\_\_\_\_

NOTES 1.5 Lane

H.C. D. Curtis

R.C. J. Householder

R. Michalak

DATE 4 March 86

WEATHER Cool

TEMP. 36°

ROUTE US #20-A

COUNTY Fulton

TOWNSHIP Swan Creek

SECTION 9

T. \_\_\_\_\_ R. \_\_\_\_\_

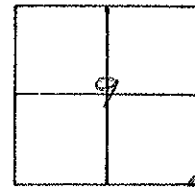
TYPE MONUMENT RR Spk

ON SURFACE - BELOW 1" deep

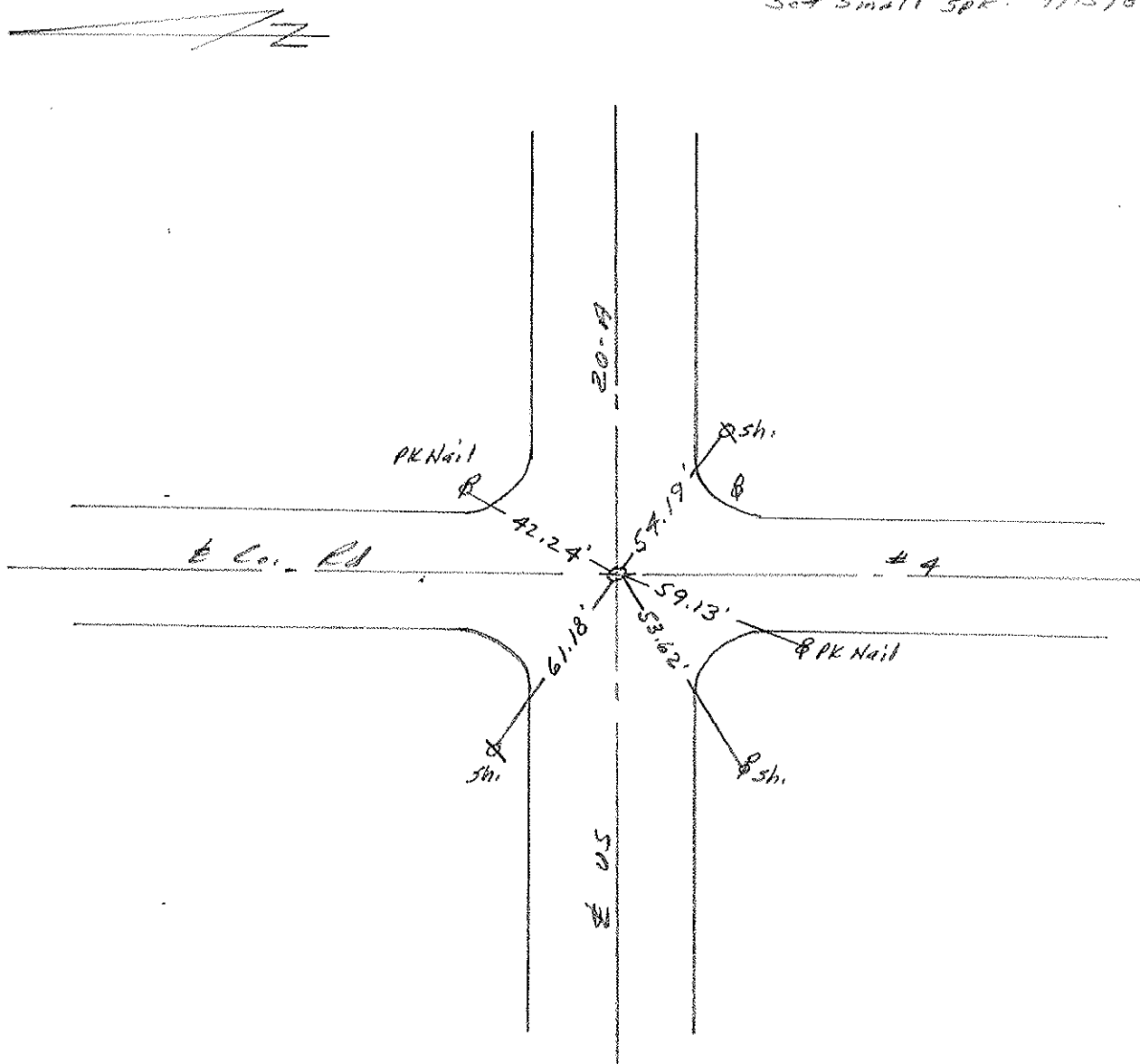
LEFT - & PAV'T. - RIGHT \_\_\_\_\_

TO \_\_\_\_\_ EDGE PAVEMENT

S.L.M. 1225 + 99



Set Small Spk. 9/15/86 1225



# O.D.O.T. DISTRICT 2 SURVEY OFFICE

PERSONNEL

REFERENCE NO. 43

SHEET 5 OF     

NOTES 1. Stone

H.C. D. Curtis

R.C. J. Householder

R. Michalak

DATE 4 March 86

WEATHER Cool

TEMP. 36°

ROUTE US #20-A

COUNTY Fulton

TOWNSHIP Swan Creek

SECTION 9

T      R     

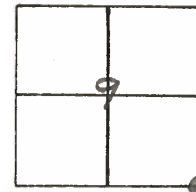
TYPE MONUMENT RR Spk

ON SURFACE - BELOW 1" deep

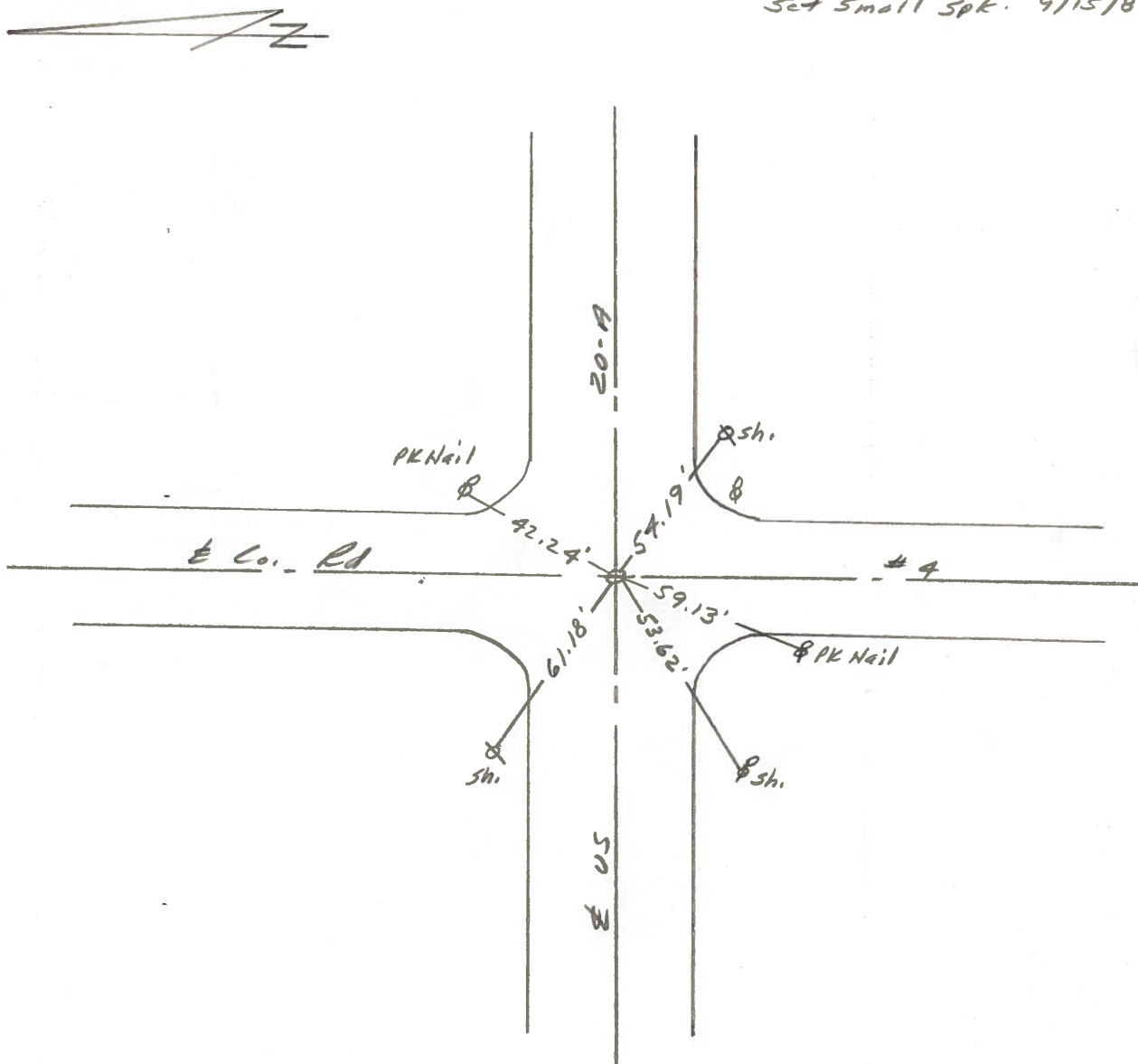
LEFT -      PAV'T. - RIGHT     

     TO      EDGE PAVEMENT

S.L.M. 1225+99



Set Small Spk. 9/15/86 IRS



County FULTON <sup>U.S.</sup> ~~S.R.~~ 20-A

Date 4-28-82

Township SWAN CREEK

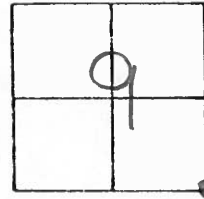
Weather \_\_\_\_\_

Section 9

Temp. +60°

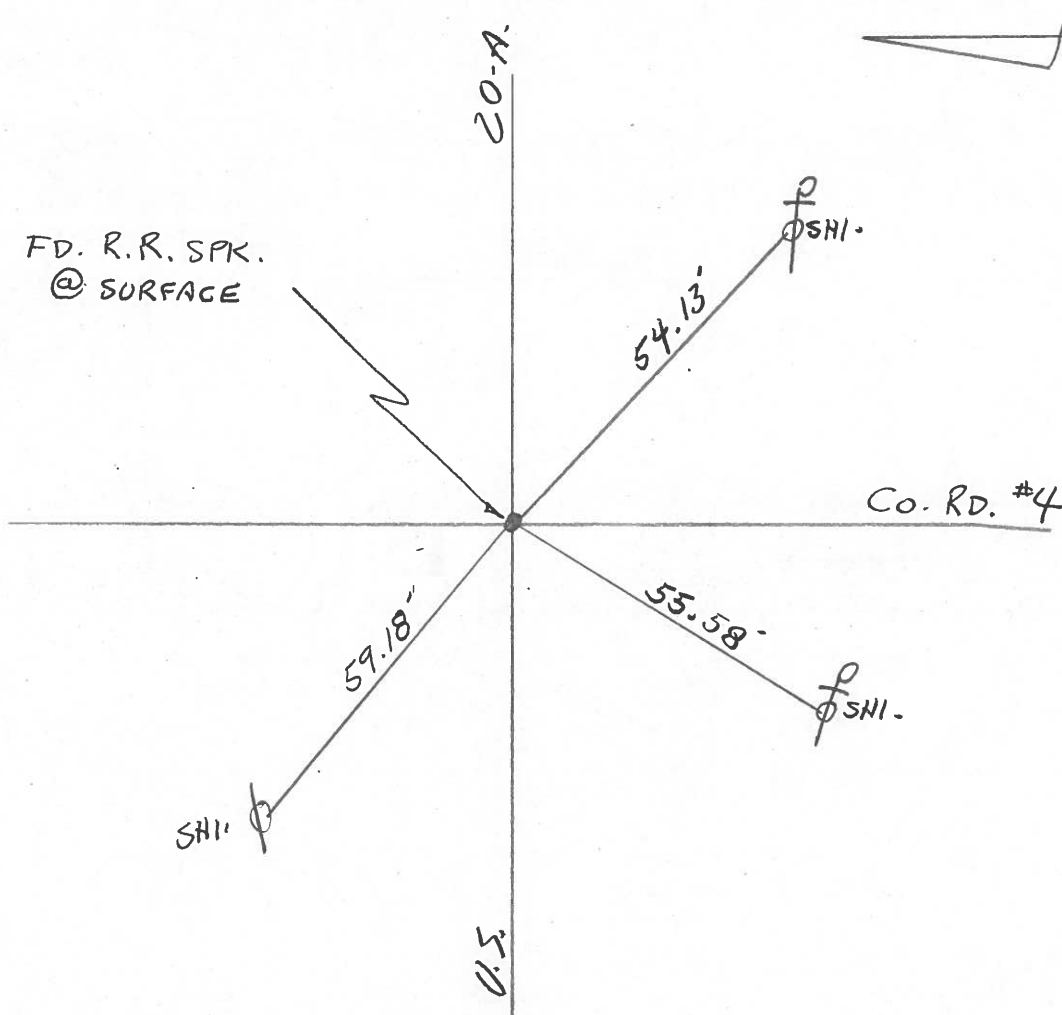
T 7 N, R E

Personnel HOFFMAN



#43

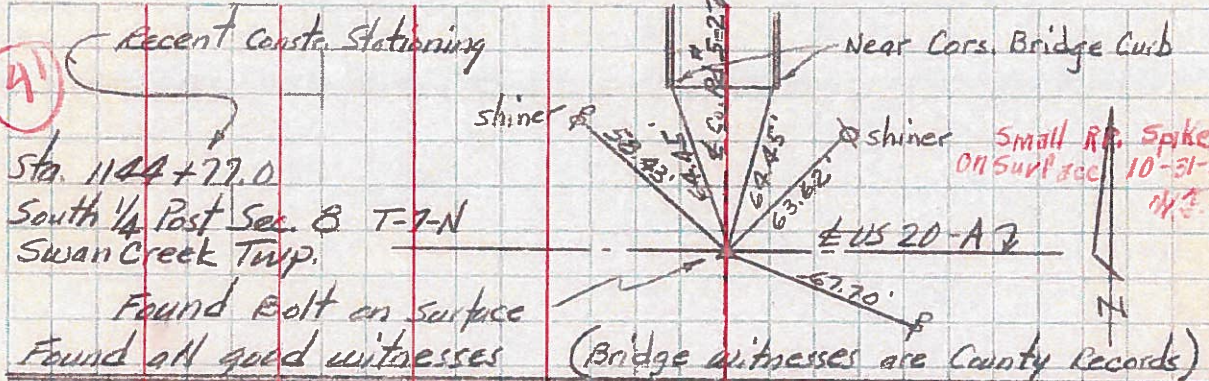
HOUSE HOLDER  
LOENRKE



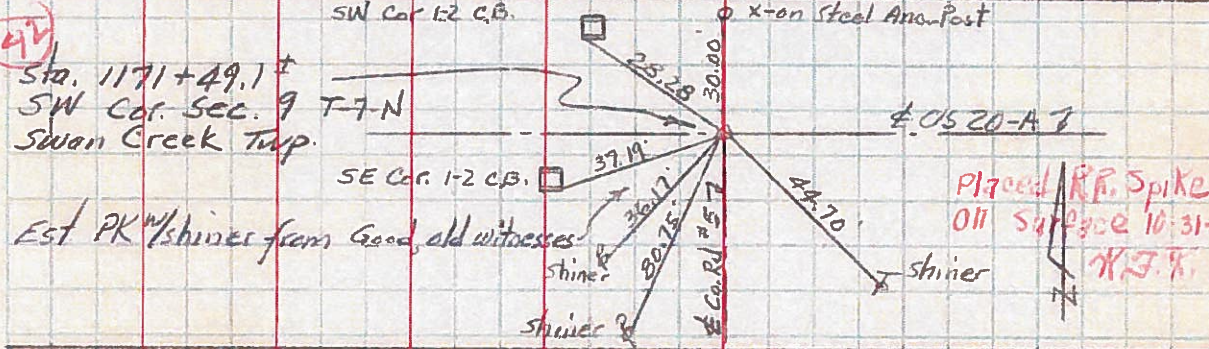


PERSONNEL TITLE PERSONNEL TITLE COUNTY Fulton DATE Jan 1960  
Bench \_\_\_\_\_  
Knape \_\_\_\_\_  
Hoff \_\_\_\_\_  
Gunter \_\_\_\_\_  
Clapp \_\_\_\_\_  
 DESCRIPTION \_\_\_\_\_ S. R. US 20-A WEATHER \_\_\_\_\_  
 \_\_\_\_\_ SEC. Delta. - Swanton TEMP \_\_\_\_\_  
 CONTROL POINTS JOB NO. 11-1-61

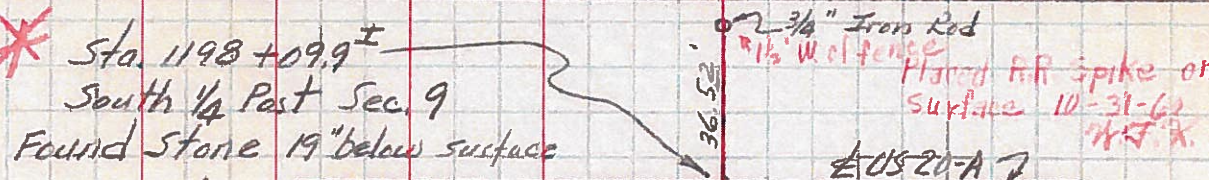
41



42

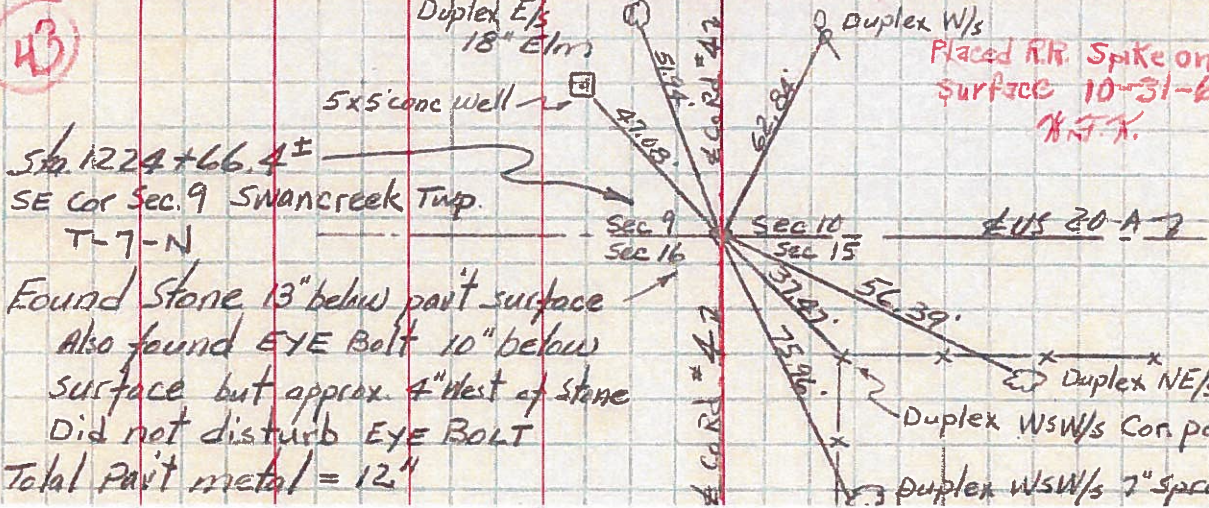


\*



42-A

43



NOTE: The following CONTROL POINTS easterly from Sta. 1144+77.0 are shown as ± stationing inasmuch as the stationing was correlated from four sets of old plans - DID NOT CHAIN