

O.D.O.T. DISTRICT 2 SURVEY OFFICE (USE ONLY)

PERSONNEL

REFERENCE NO. 44

SHEET 2 OF 10

NOTES NIESE

DATE 4-27-21

ROUTE US 20-A

H.C. AUBLE

WEATHER WINDY

COUNTY FULTON

R.C. NIESE

TEMP. 70°

TOWNSHIP SWAN CREEK

-

SECTION 10

DWG BY AUBLE PID 101295

T 7 N R 8 E

TYPE MONUMENT P.K.NAIL

ON SURFACE - ~~BELOW~~ ON

OFFSET Q PAVEMENT ON LT : RT

- TO - EDGE PAVEMENT

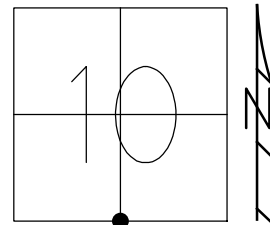
STATION: 1252+53.53

HORZ.DATUM: NAD83(2011)

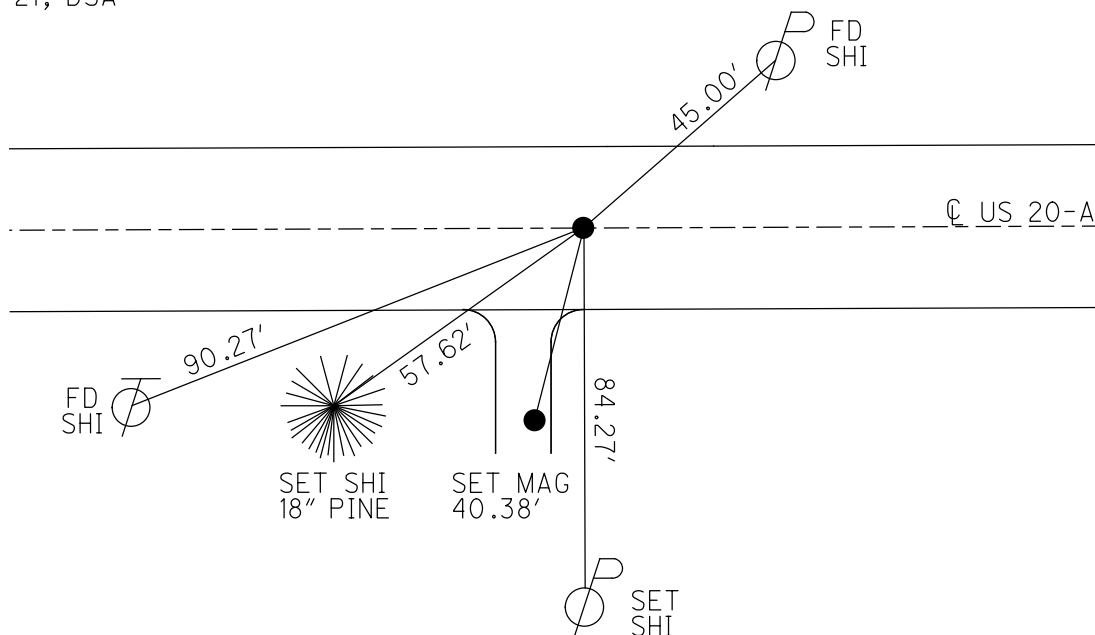
GEOID: 12A

GRID: NORTHING: 698155.151

EASTING: 1576961.457



RECORD:  
 SET P.K.NAIL  
 9/15/86, IRS  
 FD P.K.NAIL  
 REF44  
 7/31/12, SDC  
 FD P.K.NAIL  
 REF44  
 1-23-20, JLL  
 4-27-21, DSA  
 SET MAG/WASHER  
 11-1-21, DSA

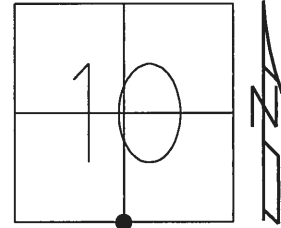


O.D.O.T. DISTRICT 2 SURVEY OFFICE (USE ONLY)

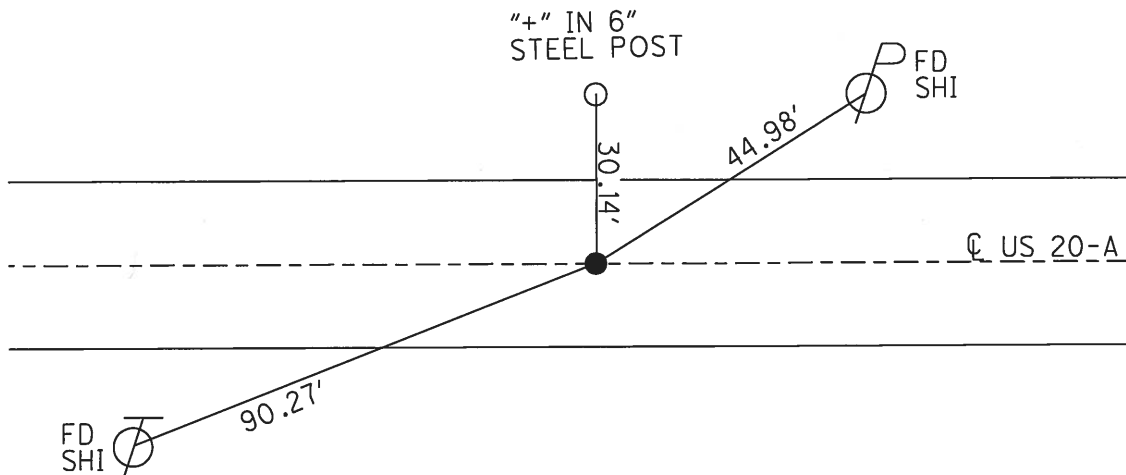
PERSONNEL \_\_\_\_\_ REFERENCE NO. 44 SHEET 2 OF 10  
 NOTES STONE DATE 3/04/86 ROUTE US 20-A  
 H.C. CURTIS WEATHER COOL COUNTY FULTON  
 R.C. HOUSEHOLDER TEMP. 36° TOWNSHIP SWAN CREEK  
MICHALAK SECTION 10  
 T 7 N R 8 E

TYPE MONUMENT \_\_\_\_\_ P.K.NAIL \_\_\_\_\_  
 ON SURFACE - ~~BELOW~~ \_\_\_\_\_ ON \_\_\_\_\_  
 LEFT - ☉ PAV'T - RIGHT \_\_\_\_\_ ON \_\_\_\_\_  
 - TO - EDGE PAVEMENT \_\_\_\_\_  
 S.L.M. \_\_\_\_\_ 1252+53.53 \_\_\_\_\_

Grid: Northing: 698155.138 Easting: 1576961.351



RECORD:  
 SET P.K.NAIL  
 9/15/86, IRS  
 FD P.K.NAIL  
 REF44  
 7/31/12, SDC



# O.D.O.T. DISTRICT 2 SURVEY OFFICE

PERSONNEL

REFERENCE NO. 44

SHEET 6 OF \_\_\_\_\_

NOTES 1. Stone

H.C. D. Curtis

R.C. J. Hauschalter

R. Michalski

DATE 7 March 86

WEATHER cool

TEMP. 36°

ROUTE US #20-1A

COUNTY Fulton

TOWNSHIP Swan Creek

SECTION \_\_\_\_\_

T. \_\_\_\_\_ R. \_\_\_\_\_

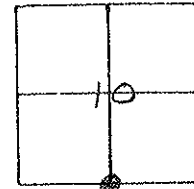
TYPE MONUMENT PK Nail

ON SURFACE - BELOW Surface

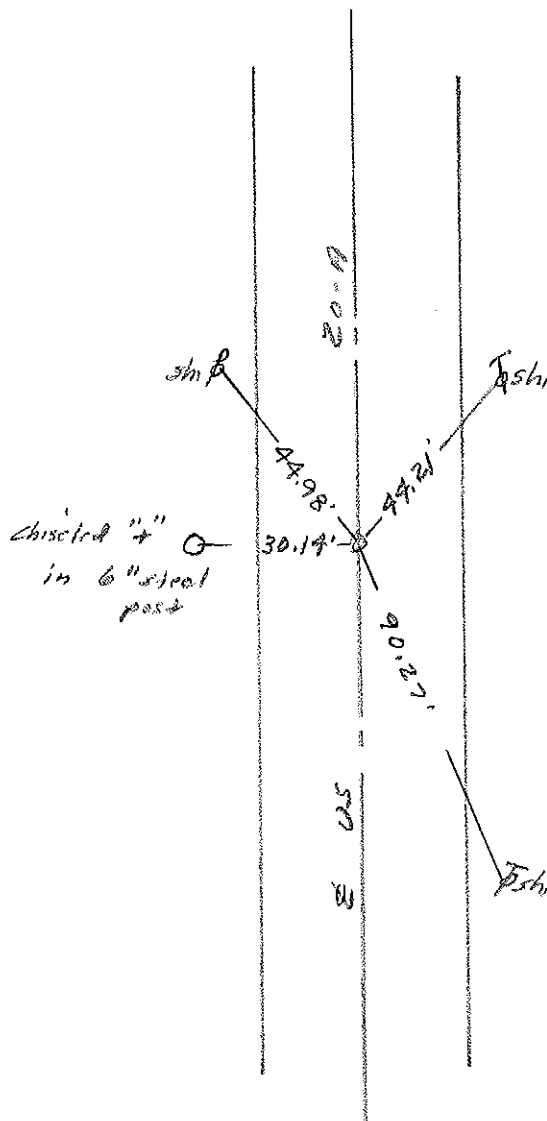
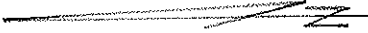
LEFT- & PAV'T. - RIGHT \_\_\_\_\_

TO \_\_\_\_\_ EDGE PAVEMENT

S.L.M. 1252-458



*set PK Nail 9/15/86 125*



County Fulton S.R. 05#20A

Date 26 Aug. 82

Township Swan Creek

Weather Fair

Section 10

Temp. 77°

T    N, R    E

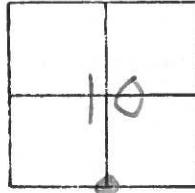
Personnel I. Stone

P. Newser

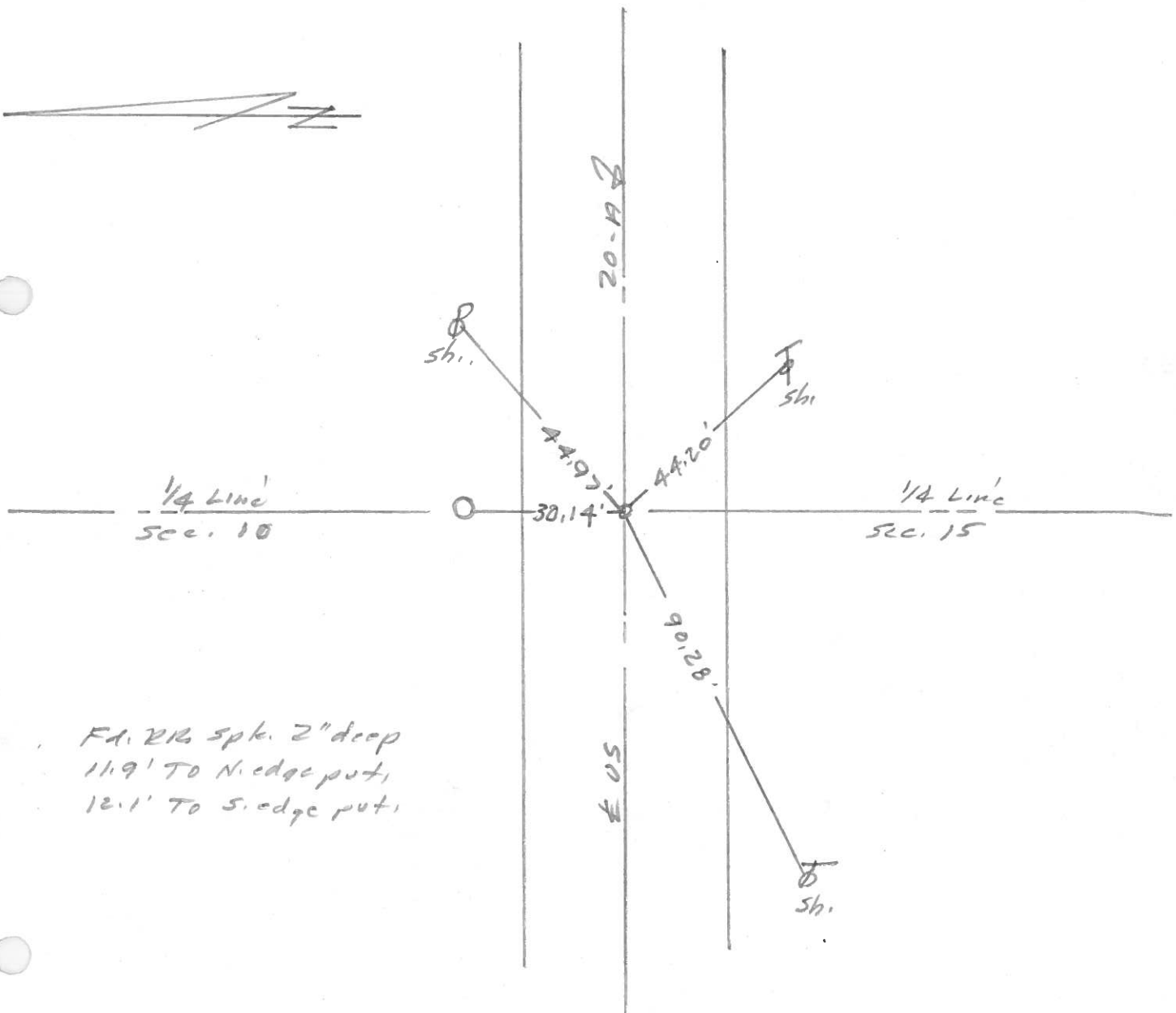
R. Michaelok

D. Curtis

44



REF. NO. 44



F.A. 212 spk. 2" deep  
 11.9' To N. edge put,  
 12.1' To S. edge put,

County FULTON <sup>U.S.</sup> ~~S.R.~~ 20-A

Date 4-28-82

Township SWAN CREEK

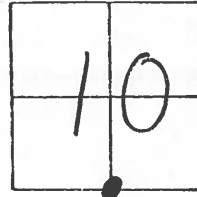
Weather \_\_\_\_\_

Section 10

Temp. +60°

T 7 N, R E

Personnel HOFFMAN



# 44

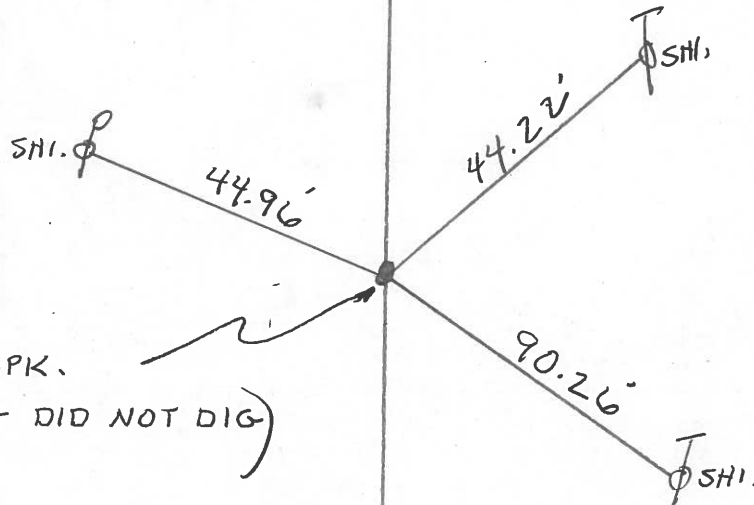
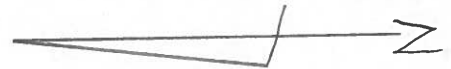
HOUSEHOLDER

LOHRKE

\_\_\_\_\_

\_\_\_\_\_

20-A



R.R. SPK.

(LOCATED - DID NOT DIG & PAINTED)

U.S.



PERSONNEL TITLE PERSONNEL TITLE COUNTY Fulton DATE 7 Jan 1960  
Beach \_\_\_\_\_  
Knape \_\_\_\_\_ S. R. US 20-A WEATHER \_\_\_\_\_  
Haff \_\_\_\_\_  
Gunter \_\_\_\_\_ SEC. Delta - Sunnton TEMP. \_\_\_\_\_

DESCRIPTION CONTROL POINTS JOB NO.  
 LEFT CENTER LINE RIGHT

