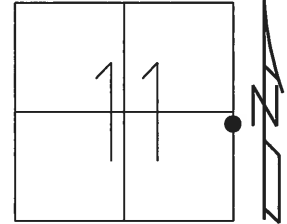


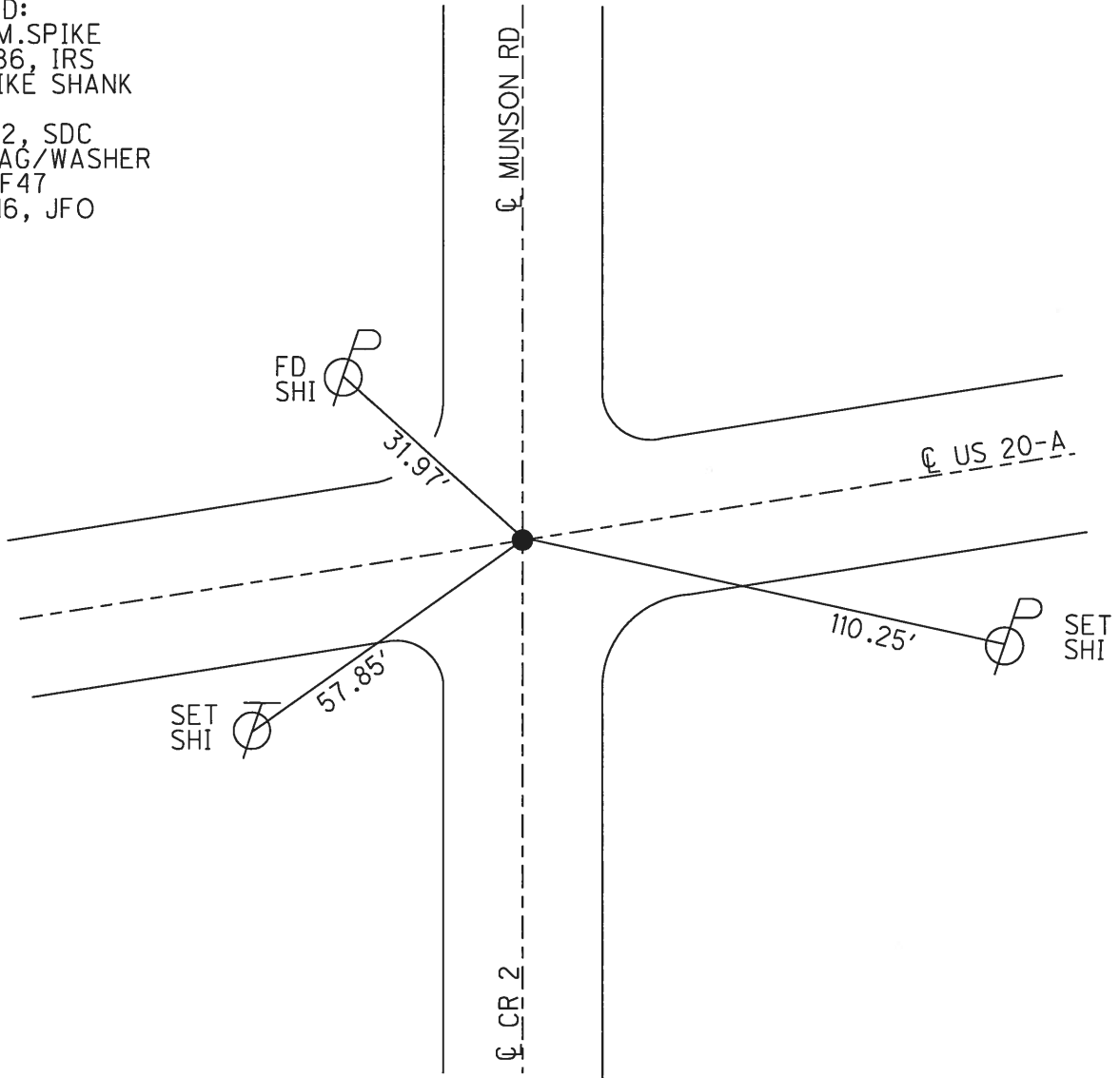
O.D.O.T. DISTRICT 2 SURVEY OFFICE (USE ONLY)

PERSONNEL _____ REFERENCE NO. 47 SHEET 7 OF 10
 NOTES RHOADES DATE 7/27/16 ROUTE US 20-A
 H.C. O'DONNELL WEATHER SUNNY COUNTY FULTON
 R.C. KEFFER TEMP. 74° TOWNSHIP SWAN CREEK
 _____ SECTION 11
 _____ T 7 N R 8 E

TYPE MONUMENT R.R.SPIKE
~~ON SURFACE~~ - BELOW 2"
 LEFT - ☉ PAV'T - RIGHT ON
- TO - EDGE PAVEMENT
 S.L.M. 1336+25.66
 Grid: Northing: 700051.642 Easting: 1584944.112



RECORD:
 SET SM.SPIKE
 9/15/86, IRS
 FD SPIKE SHANK
 REF47
 7/31/12, SDC
 SET MAG/WASHER
 NEWREF47
 11/18/16, JFO



O.D.O.T. DISTRICT 2 SURVEY OFFICE

PERSONNEL

REFERENCE NO. 47

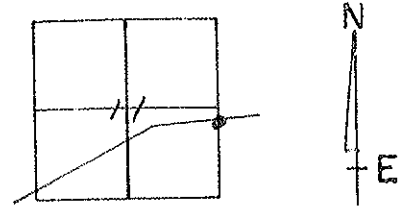
SHEET 11 OF

NOTES 1. Stone
 H.C. D. Curtis
 R.C. J. Hauscholder
R. Michalale

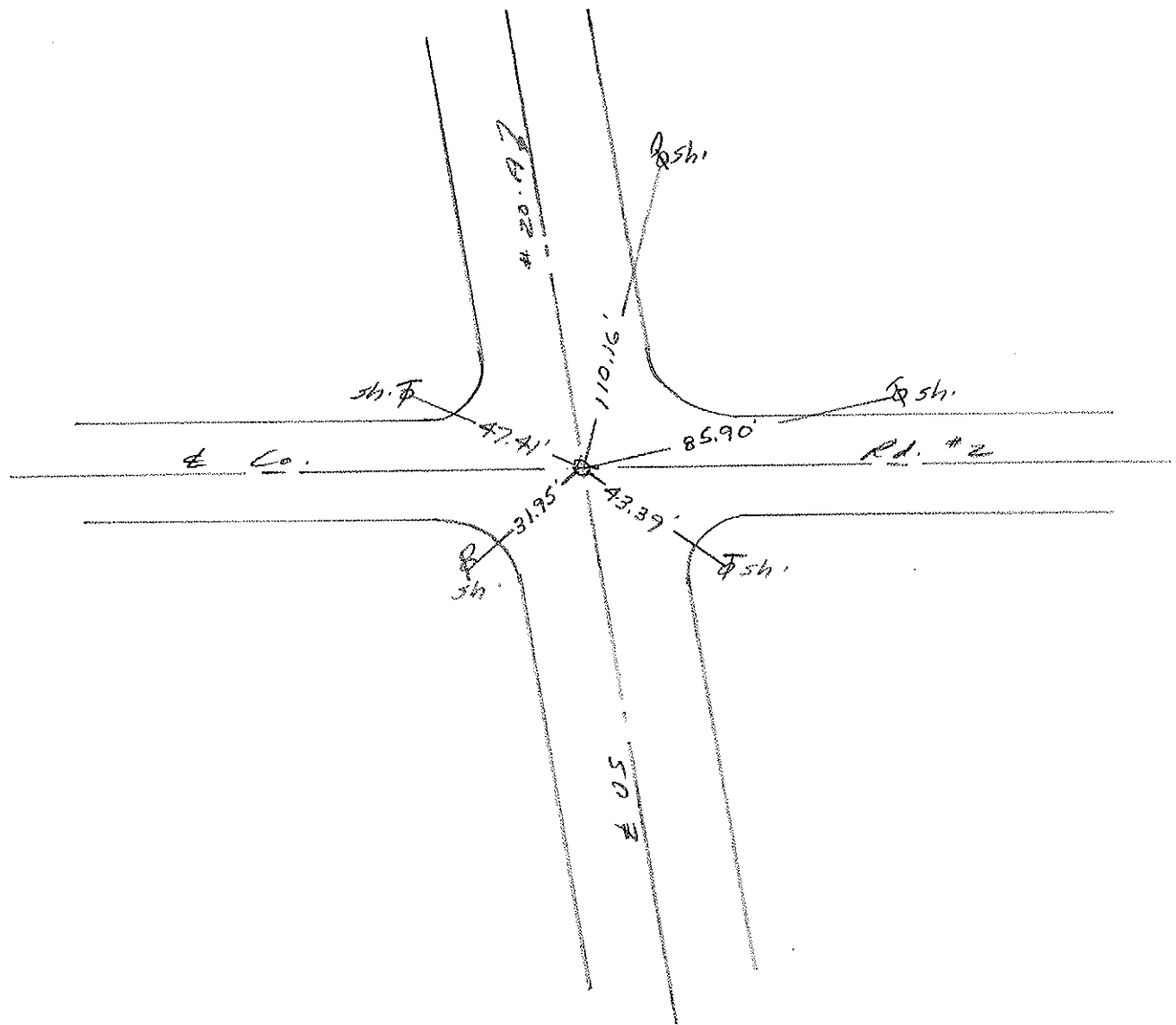
DATE 5 March 86
 WEATHER Cloudy
 TEMP. 35°

ROUTE US 20-A
 COUNTY Fulton
 TOWNSHIP Swan Creek
 SECTION 11
 T. R.

TYPE MONUMENT RR Spt.
 ON SURFACE - BELOW 2" deep
 LEFT - Q PAV'T. - RIGHT
 TO EDGE PAVEMENT
 S.L.M. 1336426



Set Small Spt. 9/15/86 125



O.D.O.T. DISTRICT 2 SURVEY OFFICE

SHEET

OF

County FULTON ^{U.S.} ~~S.R.~~ 20-A

Date 5-11-73

Township SWAN CREEK

Weather _____

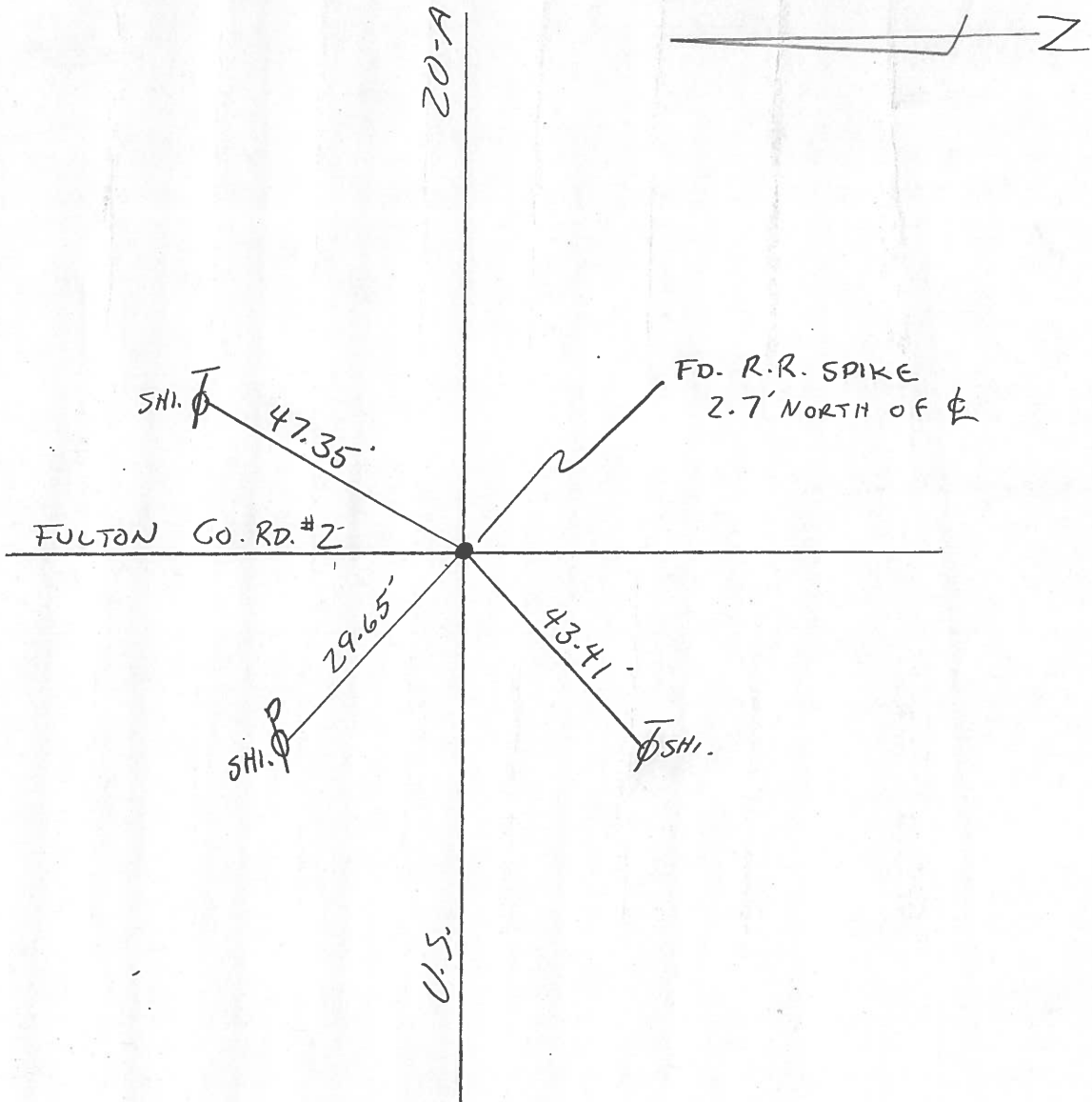
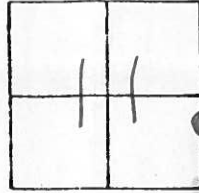
Section 11

Temp. 65°

T 1 N, R E

Personnel TOMSIK
NEUSER
GRANATA
VANYO

#47



PERSONNEL	TITLE	PERSONNEL	TITLE	COUNTY	DATE	WEATHER
Beach				Fulton	7 Jan '60	
Krape				US 20-A		
Hoff				Delta - Swanton		
Gunter						

DESCRIPTION	CONTROL POINTS LEFT	CENTER LINE	RIGHT	JOB NO.
-------------	---------------------	-------------	-------	---------

