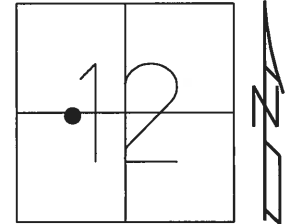


O.D.O.T. DISTRICT 2 SURVEY OFFICE (USE ONLY)

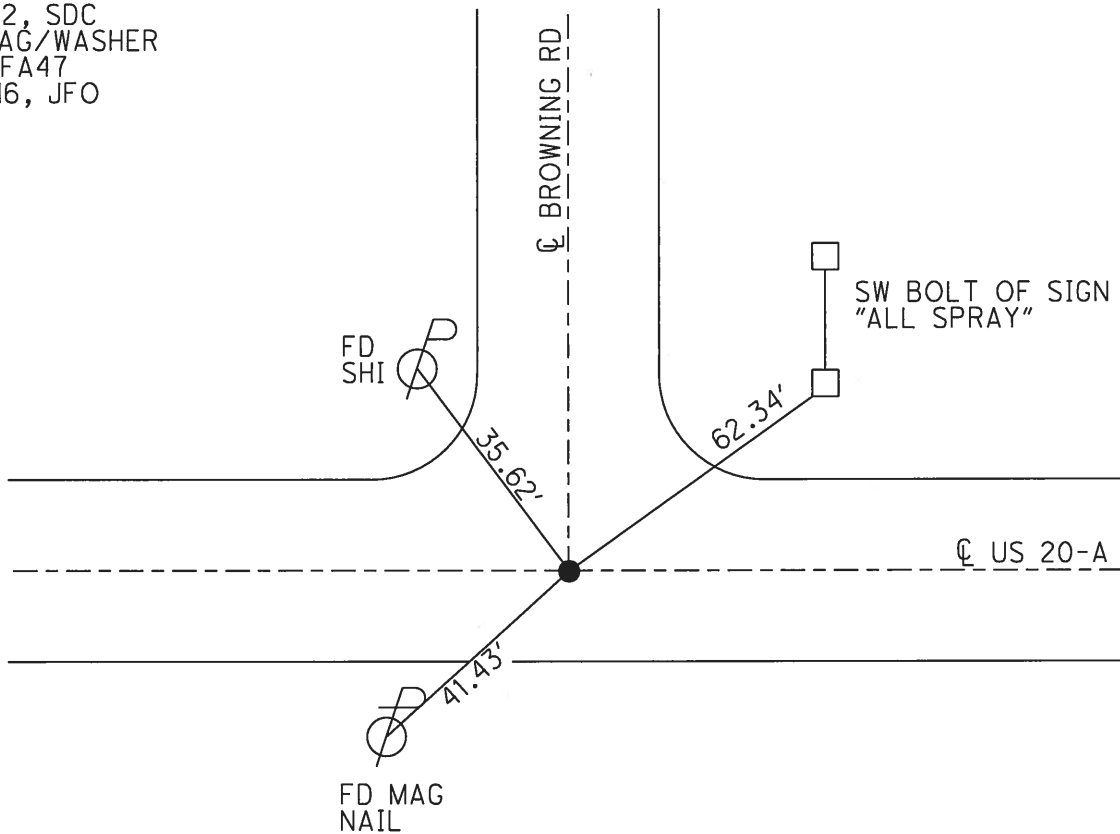
PERSONNEL _____ REFERENCE NO. 47 A SHEET 8 OF 10
 NOTES RHOADES DATE 7/27/16 ROUTE US 20-A
 H.C. O'DONNELL WEATHER SUNNY COUNTY FULTON
 R.C. KEFFER TEMP. 74° TOWNSHIP SWAN CREEK
 _____ SECTION 12
 _____ T 7 N R 8 E

TYPE MONUMENT _____ P.K.NAIL
~~ON SURFACE~~ - BELOW 3"
 LEFT - ☉ PAV'T - RIGHT ON
 _____ TO _____ EDGE PAVEMENT
 S.L.M. 1347+90.43

Grid: Northing: 700140.750 Easting: 1586105.519



RECORD:
 SET P.K.NAIL
 9/15/86, IRS
 FD P.K.NAIL
 REFA47
 7/31/12, SDC
 SET MAG/WASHER
 NEWREFA47
 11/18/16, JFO



O.D.O.T. DISTRICT 2 SURVEY OFFICE

PERSONNEL

REFERENCE NO. 47-A

SHEET 12 OF

NOTES L. Stone

H.C. D. Curtis

R.C. J. Householder

R. Michalak

DATE 5 March 86

WEATHER cloudy

TEMP. 35°

ROUTE US 20-A

COUNTY Fulton

TOWNSHIP Swan Creek

SECTION 12

T R

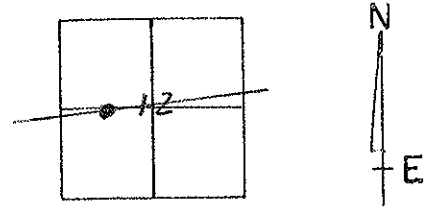
TYPE MONUMENT PK Nail

ON SURFACE - BELOW 3" deep

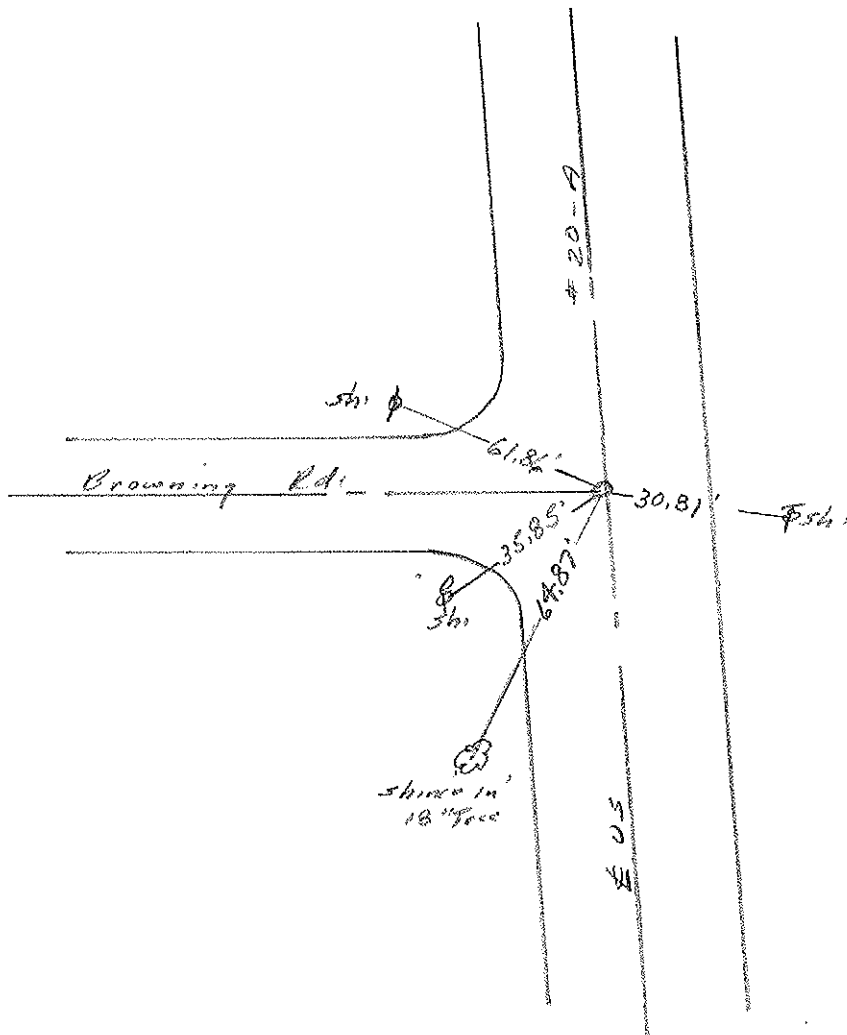
LEFT - @ PAV'T. - RIGHT

TO EDGE PAVEMENT

S.L.M. 1347+91



Set PK Nail 9/15/86 125

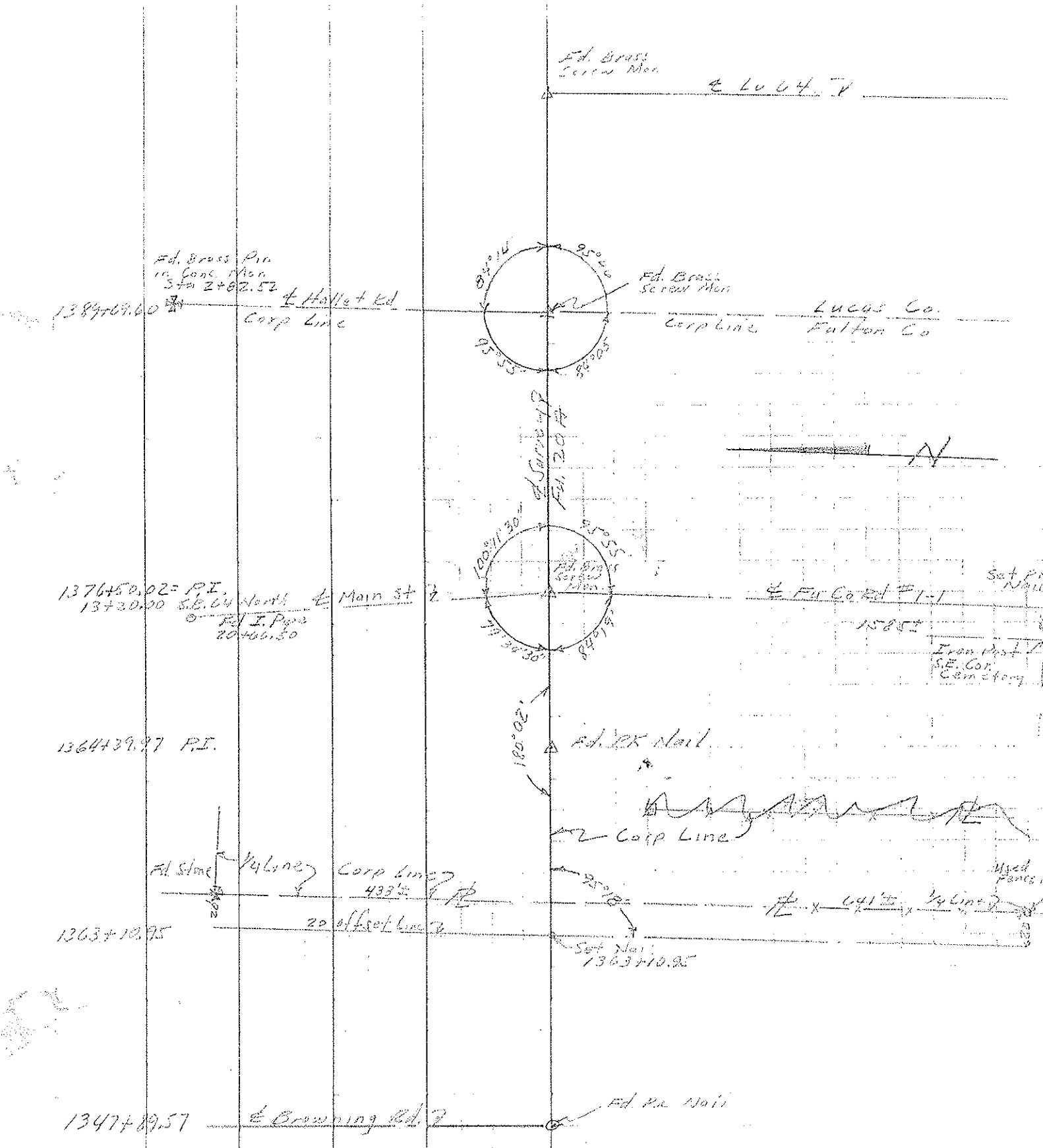


PERSONNEL	TITLE	PERSONNEL	TITLE
<i>Mudford</i>			
<i>Wheeler</i>			
<i>Palouse</i>			
<i>Baudras</i>			
<i>Marcus</i>			
DESCRIPTION			

COUNTY *Fulton* DATE *1-17-51*
 S R *20.7* WEATHER *Fair*
 SEC *5* TEMP *20*

JOB NO.

LEFT CENTER LINE RIGHT



PERSONNEL TITLE PERSONNEL TITLE

COUNTY Fulton DATE 7 Jan '60

Beach

S. R. US 20-A WEATHER

Knape

SEC. Delta-Swanton TEMP

Hoff

DESCRIPTION

CONTROL POINTS

JOB NO.

LEFT

CENTER LINE

RIGHT

46

11-1-61 W. Knape

5x5' conc. cistern

Duplex Sfs

Res Block Found

Placed R.P. spikes 11-1-60 W.F.K.

Sta. 1314+52 ±
Established PK w/ Shiner on berm

Curve Data
Δ - 20° 03' Rt.
D - 7'
E - 12.74'

US 20-A

PK on Δ, ctr. of Curve

ctr of part tangent
see below

47

Found 1 1/2" Headed Bolt on Surface

Duplex W/s

Duplex WNW/s
15" Box Elder

Sta. 1334+94 ±

Sh. NE Side

Placed PK and Shiner on surface 11-1-60 W.F.K.

60-d spk. E/s
21" Elm

* 47-A

Block Found

Near Side
2" Flag Pole

Duplex W/s

60-d spk WNW/s
25" Box Elder

Sta. 1346+59.5 ±
Found 1 1/2" Headed Bolt on Surface

Placed PK and Shiner on surface 11-1-60 W.F.K.

US 20-A