

HENRY COUNTY OHIO

TOTAL NUMBER OF OWNERS 57

FED. RD. DIVISION	STATE	PROJECT
2	OHIO	

54  
60

HENRY COUNTY  
HEN-6-4.02

1  
7

# SUMMARY OF RIGHT-OF-WAY REQUIRED

PARCEL NO.	OWNER	DEED RECORD		DEED AREA	TO BE ACQUIRED LAND ACRES	BLDGS.	RESIDUE ACRES		SHEET NO.	REMARKS	PARCEL NO.	OWNER	DEED RECORD		DEED AREA	TO BE ACQUIRED LAND ACRES	BLDGS.	RESIDUE ACRES		SHEET NO.	REMARKS		
		BOOK	PAGE				LEFT	RIGHT					BOOK	PAGE				LEFT	RIGHT				
1	August Brandt, L.E. & Martin W. Brandt	122	321	106.420	0.214				2	See Parcel No. 15	49	Emelia Eggers	148	77	102.00	0.632				5			
2	Frederick H. Yungmann & Verna A. Yungmann	140	117	48.320	0.203						50	Helen L. Vajen	126	446	55.29	0.460				5			
3	Herman Schlueter	108	88	65.02	0.431						51	Anna D. Norden, L.E. & Melvin J. Norden	149	8	80.00	0.523				5 & 6	See Parcel No. 44		
4	Lena M. Nagel	174	148	11.00	0.121					Combined with Parcel No. 8	51-A	"				0.389							
5	Darwin F. Beck	165	364	130.00	0.230						51-X	"									0.017 Ac. ±		
6	Mary Wendt	138	95	6.105	0.127						51-Y	"									0.208 Ac. ±		
7	Nettie Schliesser, Et Al.	164	254	6.105	0.127						52	Laura Wittenberg	164	388	53.50	0.000				6	No Take		
8	Cleo R. Ruffer	160	181	26.00*	0.239						53	Elmer J. Libey & Nora M. Libey	161	23	8.55	0.000						No Take	
9	Walter Schnitkey	117	359	0.50	0.832						54	Union Chappel Society	6	81	2.75	0.000						No Take	
10	Lawrence H. Meyer & Luella M. Meyer	138	340	W 1/2	427.50 Ft.						55	Robert R. Musshel & Kenneth W. Musshel	164	436	57.75	0.306							
11	Harvey Krieger	142	617	E 1/2	15.50 Ft.						55-A	"				0.408							
12	Elmer L. Cupp	165	608	Lot 22	0.004					No take	56	Donald A. Bearley & Esther M. Bearley	168	526	20.00	0.032	1						
13	Herbert E. Miller	175	322	Lot 17	0.000					No take	56-A	"				0.168							
14	Lomer Meyer Et Al.	169	13	Lot 11	0.000					No take	57	Lawrence Herge & Lorena Herge	170	231	1.00	0.078							
15	Martin W. Brandt & Annette Brandt	146	420	Lot 13	0.000					See Parcel No. 1, No Take	57-WA	"									0.007 Ac. ±		
15-T	"									0.005 Ac. ±	58	Donald Sonnenberg	157	247	73.79	0.358							
16											58-A	"				0.349							
17											58-B	"				0.065							
18											58-WA-1	"										0.009 Ac. ±	
19											58-WA-2	"										0.005 Ac. ±	
20											59	Carl Drewes & Alvina Drewes	158	111	77.60	0.550							
21	Wilhelm F. Rosebrook & Minnie Rosebrook	158	519	0.50	0.000					No take	59-A	"				0.050							
22	William H. Aschemeier & Mary Aschemeier	161	206	5.851	0.099				2	No take	59-X	"				0.056				6	0.108 Ac. ±		
23	William E. Pehler & Gladys H. Pehler	165	387	7.35	0.029				2 & 3		60	Doris Whiteman	164	331	79.65	1.592					6 & 7		
24					0.000				2	No take	60-A	"				1.078							
25	St. Peter Evangelical Lutheran Church	123	394	2.22	0.000				2	No take	60-X	"										0.045 Ac. ±	
26	Bertha Funkhouser & Marguerite Funkhouser	141	309	36.69	0.232				2 & 3		60-Y	"										0.244 Ac. ±	
27	Dora Helmke L.E. & Eldor F. Helmke	136	141	14.90	0.147				3	Also Parcel No. 33	61	T V Time Foods, Inc.	166	147	5.21	0.187					6		
28	Clarence Buehrer	150	14	60.00	0.234						62	Trustees of Napoleon Township				0.28	0.079						
28-A	"				0.272						63	Henry W. Imbrock	133	334	76.66	0.020							
29	Charles F. Benecke	163	571	18.25	0.117						63-A	"				0.086							
30	Amelia Norden	127	325	79.539	0.175						64	Karl H. Helberg	140	420	124.00	0.784							
30-A	"	160	423		0.189						64-A	"				0.457							
31	William A. Rosebrock	106	556	26.00	0.002						65	Hildegard M. Imbrock	174	427	34.00	0.633							
32	Ernest Arps & Frieda Arps	123	219	5.00	0.095						66	Ellen K. Reiser, L.E. Et Al.	172	265	40.00	0.621							
33	Dora Helmke L.E. & Eldor F. Helmke	136	141	75.29	0.375					Also Parcel No. 27	67	Helen Imbrock	143	437	20.00	0.483							
34	Elmer Shibley	170	345	90.00	0.180						68	Doris M. Dietrich	135	167	79.54								See Parcel 40 Hen-20-04, Hen-16-10-78 See Parcel 41 Hen-22-011, Hen-6-10-78
35	George Schuette	133	439	67.00	0.378					Also Parcel No. 41	68-A	"											
36	Alice E. Motter (Deceased) Genevieve Motter (Mrs. Wayne Eicher)	145	91	23.00	0.105						69	William C. Gessner & Edras V. Gessner	162	143	18.857	0.088							
37	Henry Wittenberg & Minnie Wittenberg	132	177	70.75	0.485				3		69-A	"				0.252							
38	Alice Motter L.E. (Deceased) Earl Motter Et Al.	145	91	60.44	0.203				4		70	George J. Eckenrode & Dianne Eckenrode	174	454	0.459	0.023							
38-A	"				0.349						71	Richard J. Nye & Margaret Ellen Nye	174	470	0.684	0.026							
38-B	"				0.832																		
39	Dora Titgemeyer & Theodore Titgemeyer	155	121	102.44	0.466					Also Parcel No. 40													
39-A	"				0.347																		
40	Dora Titgemeyer & Theodore Titgemeyer	155	121	40.00	0.546					Also Parcel No. 39													
41	George J. F. Schutte	91	577	40.00	0.199					Also Parcel No. 35													
42	Carl Eggers	126	558	180.00	0.336																		
42-A	"				0.314																		
43	Henry L. Eggers	140	367	50	0.267	1																	
43-A	"				0.184																		
43-B	"				0.149				4														
44	Anna D. Norden L.E. & Rudolph C. Norden	149	7	111.00	0.019				4 & 5	See Parcel No. 51													
44-A	"				0.141																		
44-T	"									0.028 Ac. ±													
45	Altha L. Rickenberg	160	577	7.37	0.653				4 & 5														
46	Clarence M. Tietje	164	77	36.57	0.566				5														
47	Ernest Rickenberg & Altha Rickenberg	161	554	60.00	0.494																		
48	Fred H. Damman & Marie A. Damman	178	105	42.56	0.094																		
48-A	"				0.060																		
48-B	"				0.001				5														

Scanned June 1997

R2206 #1 0-38



SEC. 34, RIDGEVILLE TWP. ~ T6N, R5E

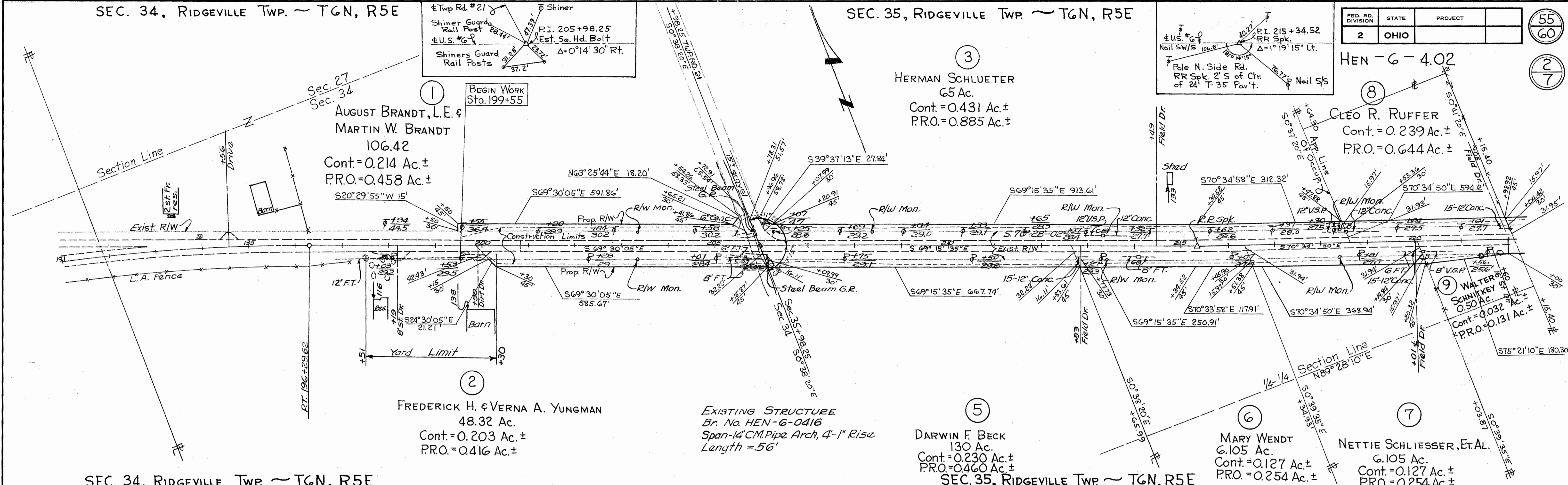
SEC. 35, RIDGEVILLE TWP. ~ T6N, R5E

FED. RD. DIVISION	STATE	PROJECT
2	OHIO	

55  
60

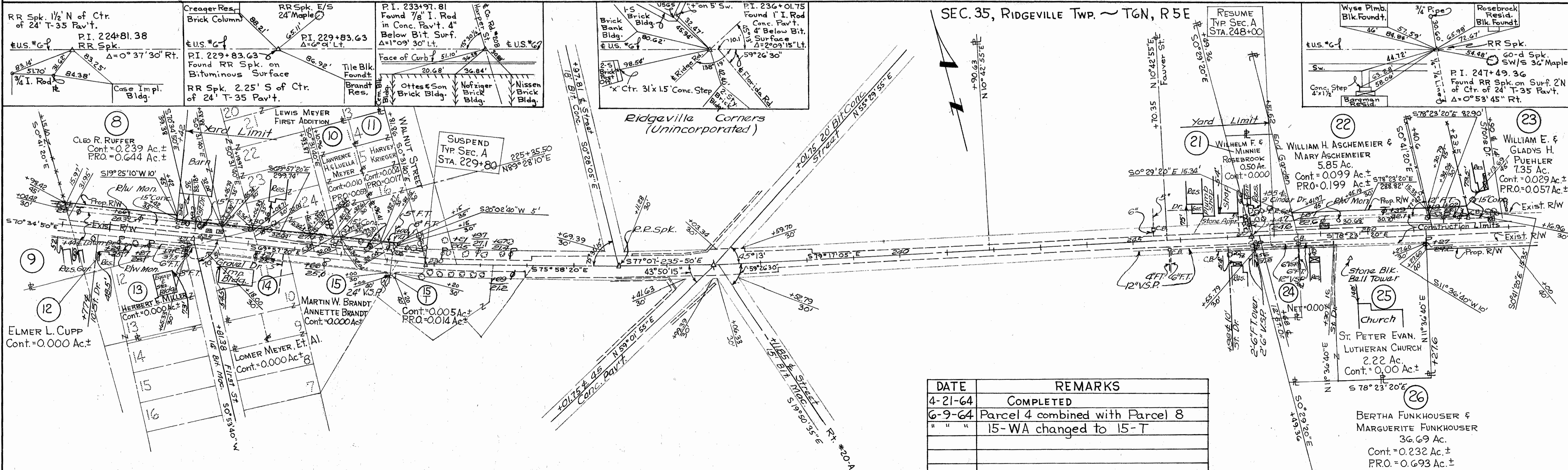
2  
7

HEN-6-4.02



SEC. 34, RIDGEVILLE TWP. ~ T6N, R5E

SEC. 35, RIDGEVILLE TWP. ~ T6N, R5E



SEC. 35, RIDGEVILLE TWP. ~ T6N, R5E

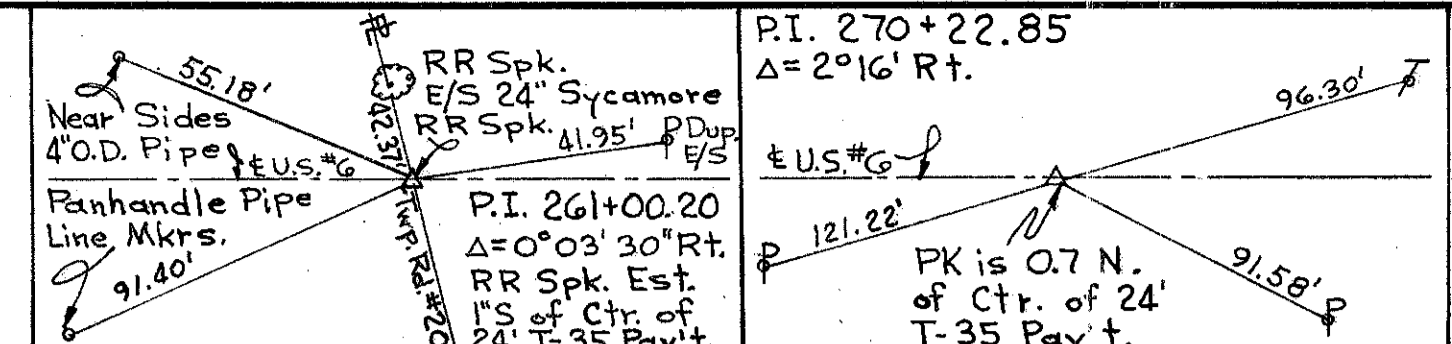
DATE	REMARKS
4-21-64	COMPLETED
6-9-64	Parcel 4 combined with Parcel 8
" " "	15-WA changed to 15-T



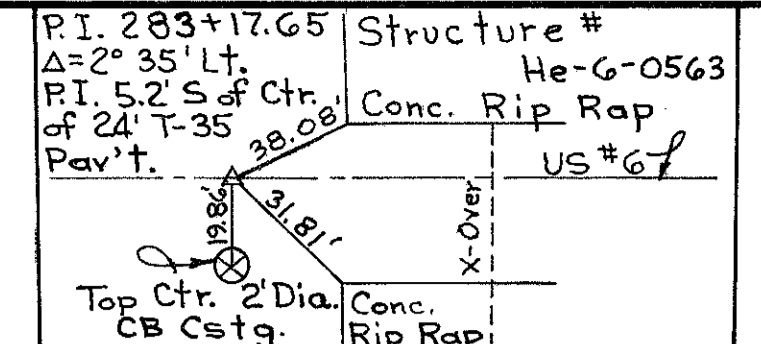
SEC. 35, RIDGEVILLE TWP ~ TGN, R5E

23  
WILLIAM E. &  
GLADYS H.  
PUEHLER  
7.35 Ac.  
Cont.=0.000 Ac.±

27  
DORA HELMKE L.E. &  
ELDOR HELMKE  
14.90 Ac.  
Cont.=0.147 Ac.±  
P.R.O.=0.439 Ac.±



SEC. 36, RIDGEVILLE TWP ~ TGN, R5E



FED. RD. DIVISION	STATE	PROJECT	
2	OHIO		

HE-6-0563  
Conc. Rip Rap  
US #6f  
US #6f

HE-6-4.02

56  
60  
3  
7

28  
CLARENCE BUEHRER  
60 Ac.  
Cont.=0.234 Ac.±  
P.R.O.=0.702 Ac.±

29  
CHARLES F.  
BENECKE  
18.25 Ac.  
Cont.=0.117 Ac.±  
P.R.O.=0.234 Ac.±

30  
AMELIA NORDEN  
79.539 Ac.  
Cont.=0.175 Ac.±  
P.R.O.=0.353 Ac.±

30A  
Cont.=0.189 Ac.±  
P.R.O.=0.370 Ac.±

26  
BERTHA FUNKHOUSER &  
MARGUERITE FUNKHOUSER  
36.69 Ac.  
Cont.=0.232 Ac.±  
P.R.O.=0.693 Ac.±

28A  
CLARENCE BUEHRER  
60 Ac.  
Cont.=0.272 Ac.±  
P.R.O.=0.716 Ac.±

31  
WILLIAM ROSEBROCK  
Cont.=0.002 Ac.±  
P.R.O.=0.012 Ac.±

32  
ERNEST & FRIDEKA ARPS  
5 Ac.  
Cont.=0.095 Ac.±  
P.R.O.=0.314 Ac.±

33  
DORA HELMKE L.E. &  
ELDOR F. HELMKE  
75.29 Ac.  
Cont.=0.375 Ac.±  
P.R.O.=0.859 Ac.±

EXISTING STRUCTURE  
BR. NO. HEN-6-0564  
2-10'-8" x 6'-11" SECTIONAL C.M.P.  
LENGTH: 54 FT.

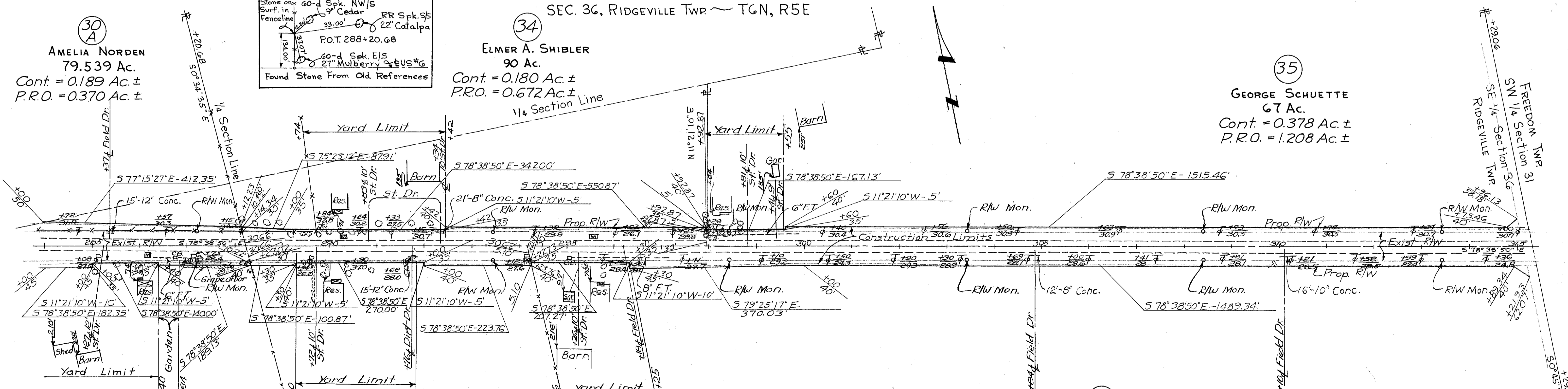
SEC. 35, RIDGEVILLE TWP ~ TGN, R5E

SEC. 36, RIDGEVILLE TWP ~ TGN, R5E

30A  
AMELIA NORDEN  
79.539 Ac.  
Cont.=0.189 Ac.±  
P.R.O.=0.370 Ac.±

34  
ELMER A. SHIBLER  
90 Ac.  
Cont.=0.180 Ac.±  
P.R.O.=0.672 Ac.±

35  
GEORGE SCHUETTE  
67 Ac.  
Cont.=0.378 Ac.±  
P.R.O.=1.208 Ac.±



33  
DORA HELMKE L.E. &  
ELDOR F. HELMKE  
75.29 Ac.  
Cont.=0.375 Ac.±  
P.R.O.=0.859 Ac.±

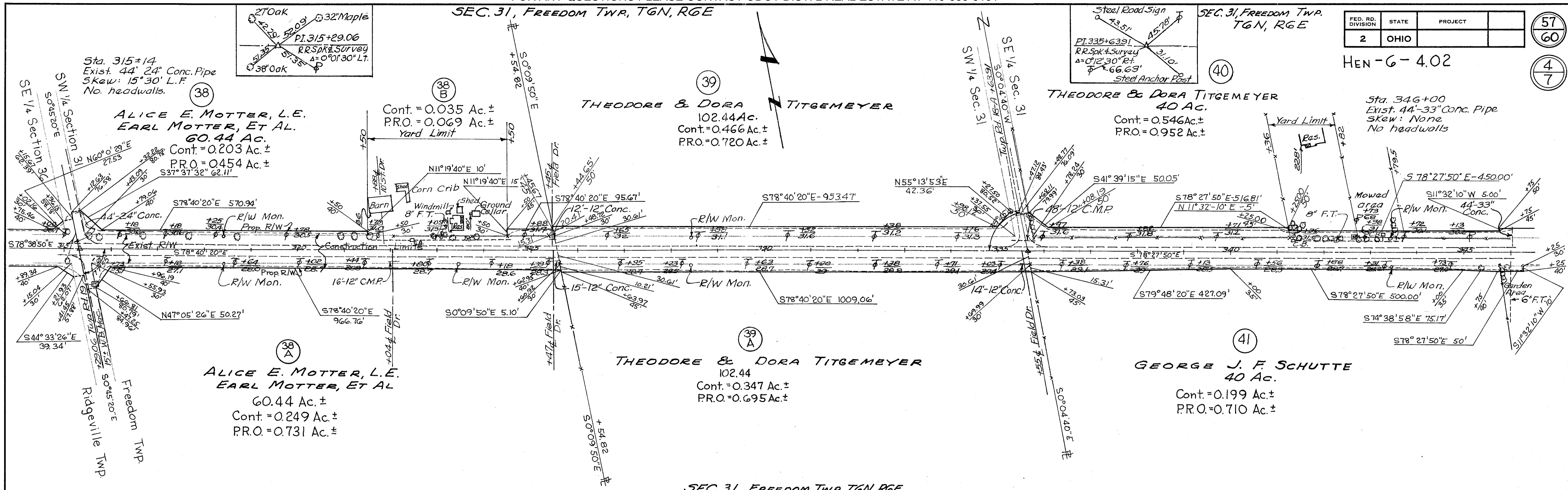
36  
ALICE E. MOTTER, L.E. &  
GENEVIEVE MOTTER  
23 Ac.  
Cont.=0.105 Ac.±  
P.R.O.=0.410 Ac.±

37  
HENRY & MINNIE WITTENBERG  
70.75 Ac.  
Cont.=0.485 Ac.±  
P.R.O.=1.470 Ac.±

DATE	REMARKS
4-23-64	COMPLETED



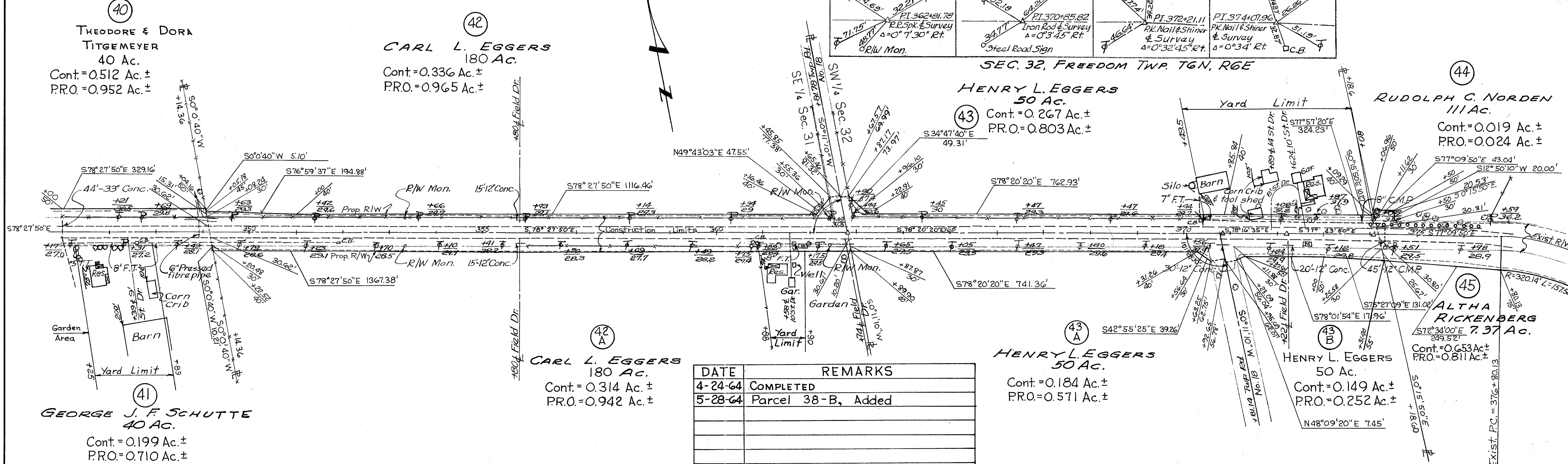
Scanned June 1997



FED. RD. DIVISION	STATE	PROJECT	57
2	OHIO		60
			4
			7

HEN-6-4.02

SEC. 31, FREEDOM TWP, T6N, R6E



DATE	REMARKS
4-24-64	COMPLETED
5-28-64	Parcel 38-B, Added

R/W Sta. 315+00 to Sta. 376+00



SEC. 32, FREEDOM TWP. T6N, R6E

SEC. 5, NAPOLEON TWP. T5N, R6E

FED. RD. DIVISION	STATE	PROJECT	58
2	OHIO		60

EXIST. CURVE DATA

PI. Sta. 377+80.06  
 $\Delta = 28^\circ 23' \text{ Rt.}$   
 $D = 14^\circ 30'$   
 $R = 395.14'$   
 $L = 195.75'$   
 $T = 99.93'$   
 $E = 124.3'$

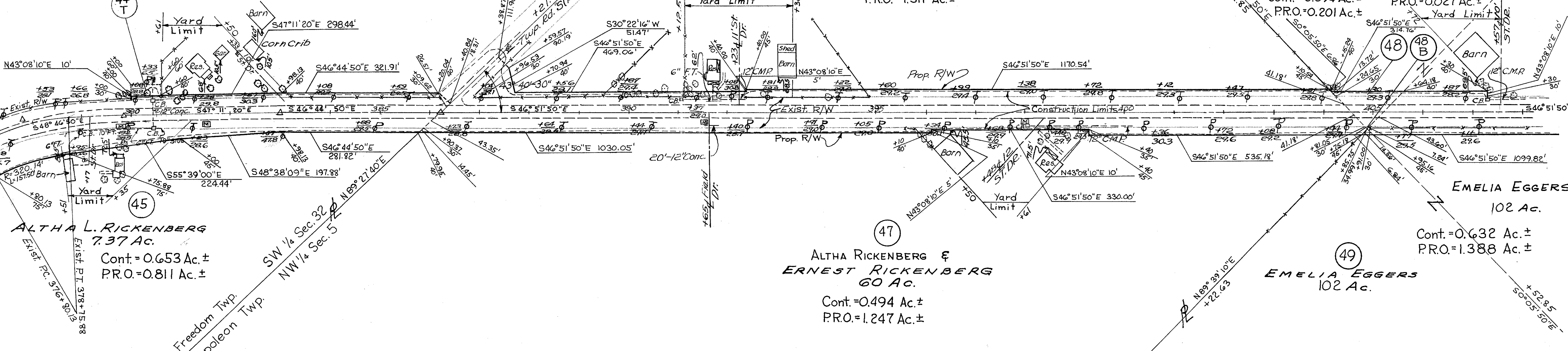
ANNA D. NORDEN, L.E.  
 RUDOLPH C. NORDEN  
 111 Ac.

Cont. = 0.028 Ac. ±  
 Cont. = 0.141 Ac. ±  
 P.R.O. = 0.438 Ac. ±

CLARENCE M. TIETJE  
 36.57 Ac.  
 Cont. = 0.566 Ac. ±  
 P.R.O. = 1.311 Ac. ±

FRED H. DAMMAN  
 MARIE A. DAMMAN  
 42.56 Ac.  
 Cont. = 0.094 Ac. ±  
 P.R.O. = 0.201 Ac. ±

Cont. = 0.001 Ac. ±  
 P.R.O. = 0.027 Ac. ±

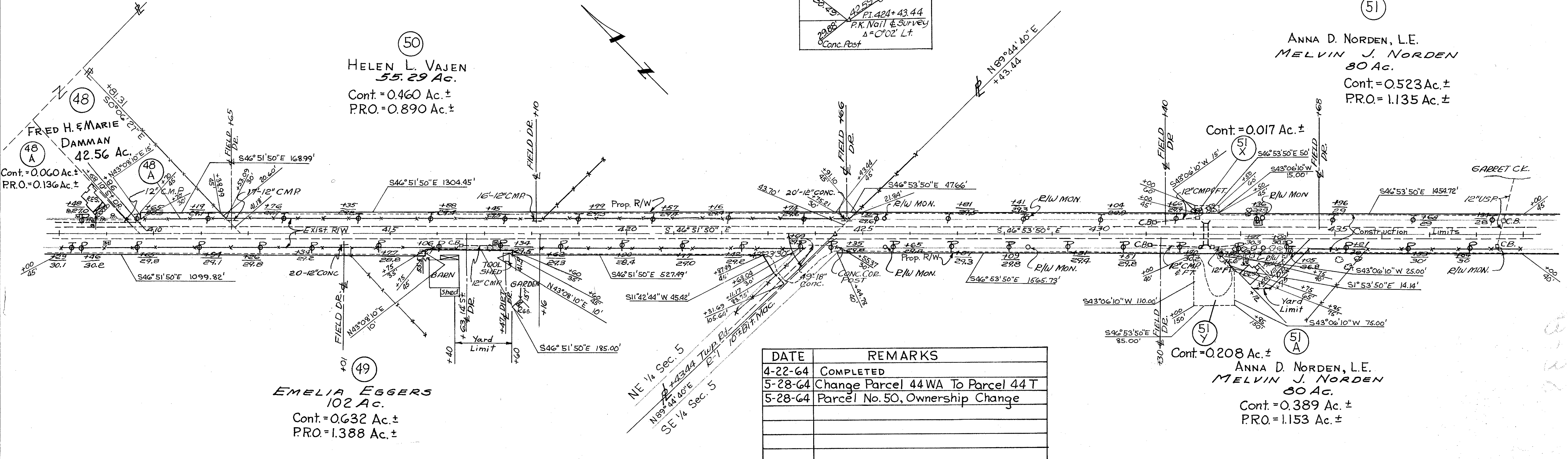


SEC. 32, FREEDOM TWP. T6N, R6E

SEC. 5, NAPOLEON TWP. T5N, R6E

HELEN L. VAJEN  
 55.29 Ac.  
 Cont. = 0.460 Ac. ±  
 P.R.O. = 0.890 Ac. ±

ANNA D. NORDEN, L.E.  
 MELVIN J. NORDEN  
 80 Ac.  
 Cont. = 0.523 Ac. ±  
 P.R.O. = 1.135 Ac. ±



DATE	REMARKS
4-22-64	COMPLETED
5-28-64	Change Parcel 44 WA To Parcel 44 T
5-28-64	Parcel No. 50, Ownership Change

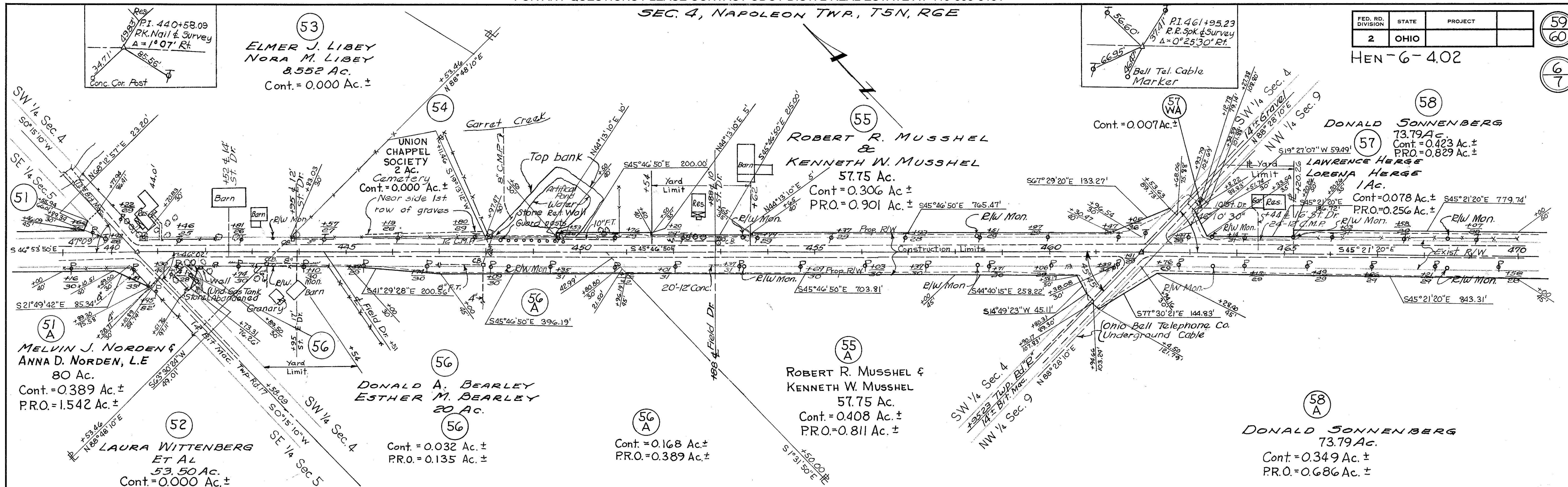


SEC. 4, NAPOLEON TWP., T5N, R6E

FED. RD. DIVISION	STATE	PROJECT
2	OHIO	

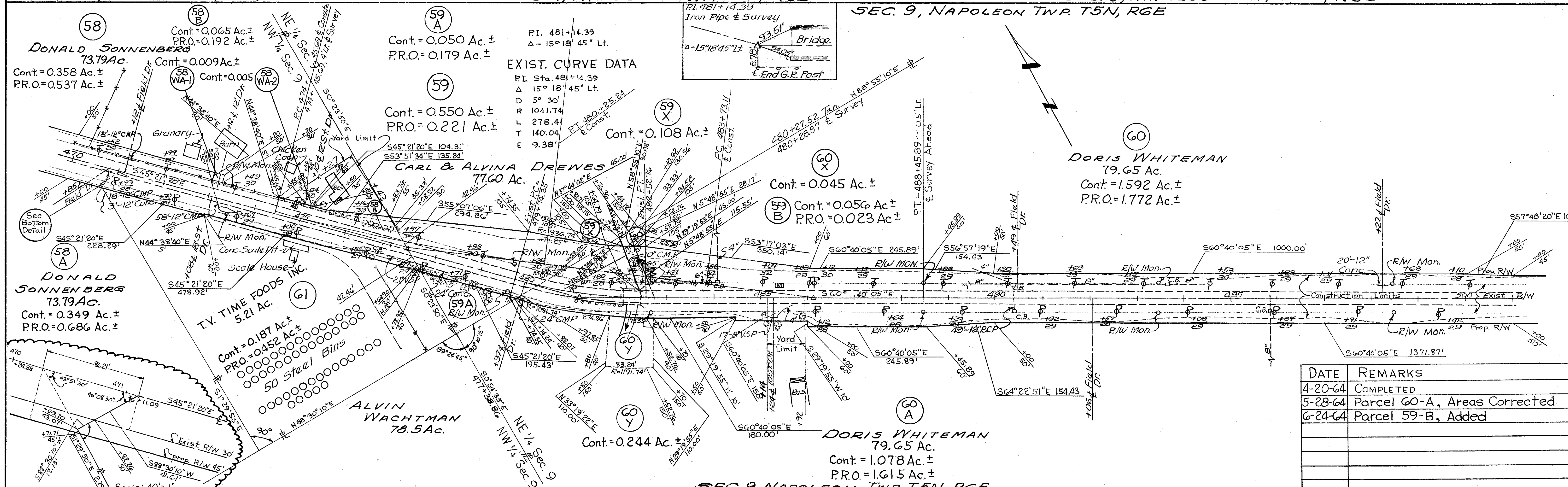
HEN-6-4.02

59  
60  
67



SEC. 4, NAPOLEON TWP. T5N, R6E

SEC. 9, NAPOLEON TWP. T5N, R6E



DATE	REMARKS
4-20-64	COMPLETED
5-28-64	Parcel 60-A, Areas Corrected
6-24-64	Parcel 59-B, Added

R/W Sta. 439+00 to Sta. 501+00

Scanned  
JUNE 1997



SEC. 9, NAPOLEON TWP. T5N, R6E

SEC. 10, NAPOLEON TWP. T5N, R6E

FED. RD. DIVISION	STATE	PROJECT	
2	OHIO		

HEN-6-4.02

60  
60  
7  
7

60  
**DORIS WHITEMAN**  
79.65 Ac.  
Cont. = 1.592 Ac. ±  
P.R.O. = 1.772 Ac. ±

NOTE: STA. EQUATION DEDUCT 1484.57'  
KARL H. HELBERG  
124 Ac.  
Cont. = 0.784 Ac. ±  
P.R.O. = 1.218 Ac. ±

65  
**HILDEGARD M. IMBROCK**  
34 Ac.  
Cont. = 0.633 Ac. ±  
P.R.O. = 0.962 Ac. ±

60  
Cont. = 1.078 Ac. ±  
P.R.O. = 1.615 Ac. ±

62  
**TRUSTEES OF NAPOLEON TWP.**  
0.28 Ac.  
Cont. = 0.079 Ac. ±  
P.R.O. = 0.204 Ac. ±

63  
**HENRY W. IMBROCK**  
76.66 Ac.  
Cont. = 0.086 Ac. ±  
P.R.O. = 0.198 Ac. ±

63  
Cont. = 0.020 Ac. ±  
P.R.O. = 0.075 Ac. ±

64  
**KARL H. HELBERG**  
124 Ac.  
Cont. = 0.457 Ac. ±  
P.R.O. = 1.091 Ac. ±

66  
**ELLA K. REISER, L.E. ET AL**  
40 Ac.  
Cont. = 0.621 Ac. ±  
P.R.O. = 1.099 Ac. ±

SEC. 9, NAPOLEON TWP. T5N, R6E

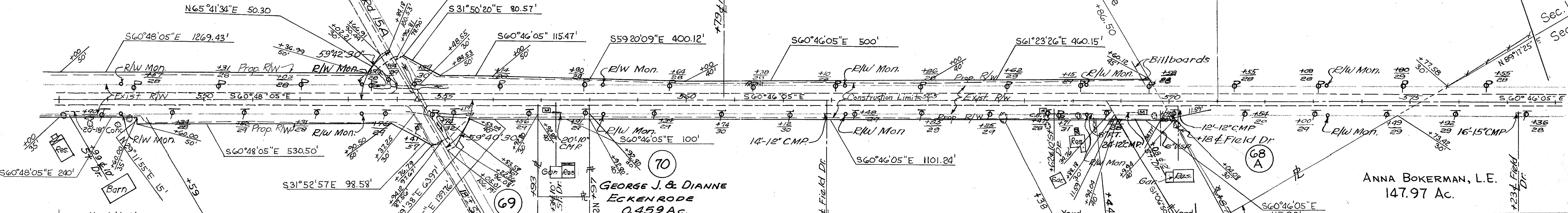
SEC. 10, NAPOLEON TWP. T5N, R6E

65  
**HILDEGARD M. IMBROCK**  
34 Ac.  
Cont. = 0.633 Ac. ±  
P.R.O. = 0.962 Ac. ±

67  
**HELEN IMBROCK**  
20 Ac.  
Cont. = 0.483 Ac. ±  
P.R.O. = 1.088 Ac. ±

68  
**DORIS M. DIETRICH**  
79.54 Ac.  
See Parcels 41 & 42 on  
HEN-24-0.11, HEN-6-10.78

**EDGAR W. F. NAGEL & LUCILLE NAGEL**  
7 Ac.



66  
**ELLA K. REISER, L.E. ET AL**  
40 Ac.  
Cont. = 0.621 Ac. ±  
P.R.O. = 1.099 Ac. ±

70  
**GEORGE J. & DIANNE ECKENRODE**  
0.459 Ac.  
Cont. = 0.023 Ac. ±  
P.R.O. = 0.069 Ac. ±

69  
**WILLIAM C. GESSNER & EDGAR V. GESSNER**  
18.857 Ac.  
Cont. = 0.088 Ac. ±  
P.R.O. = 0.204 Ac. ±

71  
**RICHARD J. NYE & MARGARET ELLEN NYE**  
0.684 Ac.  
Cont. = 0.026 Ac. ±  
P.R.O. = 0.080 Ac. ±

DATE	REMARKS
4-15-64	COMPLETED
5-27-64	R - Parcels 60-A & 62 Revised
7-6-64	Parcel 62 Corrected
8-16-65	Parcels 68 & 68-A Deleted, See Hen-24-0.11 & Hen-6-10.78

SEC. 10, NAPOLEON TWP. T5N, R6E

SEC. 15, NAPOLEON TWP. T5N, R6E

Scanned June 1997