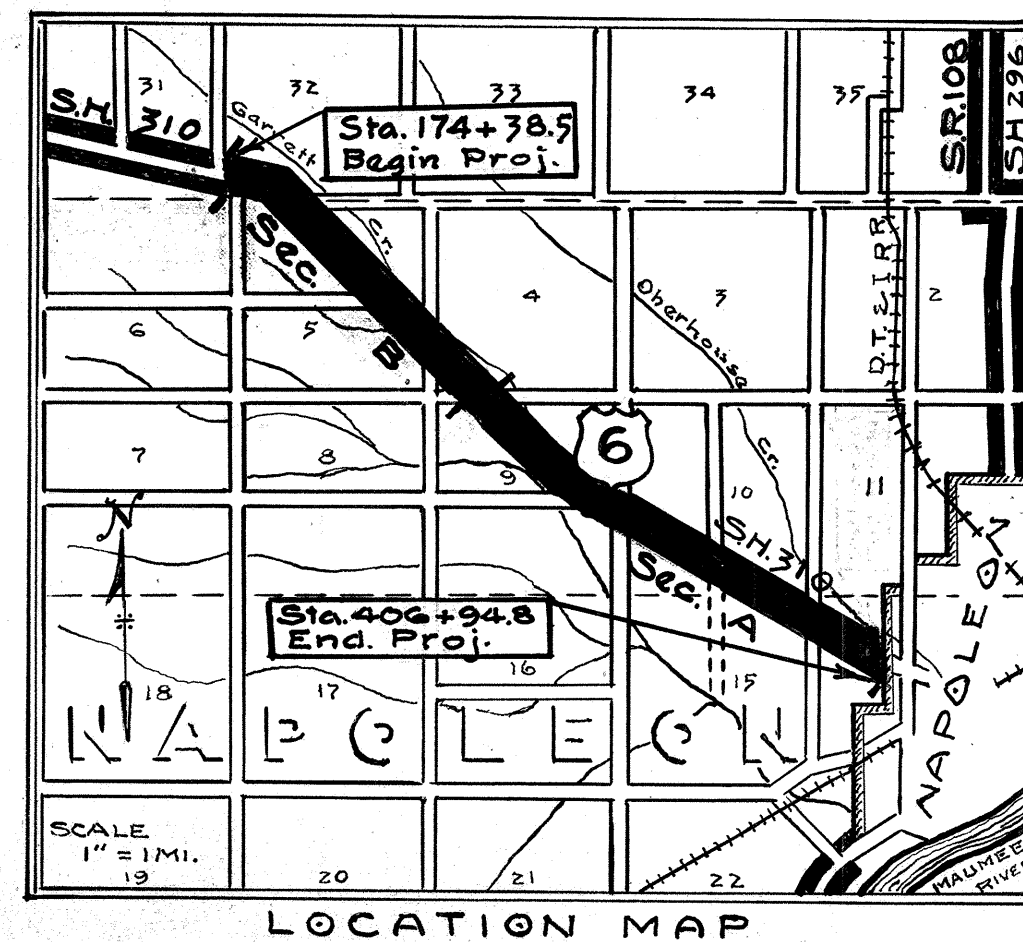


#2017

FOR ANY QUESTIONS PLEASE CONTACT ODOT DIST. 2 REAL ESTATE AT 419-353-8131

HENRY COUNTY 1/10
S.H. 310-SEC. A & B-SR. 6
HIGHWAY AUTHORIZATION NO. 2-35-2
W.P.A. JOB NO. 35-104

STATE OF OHIO DEPARTMENT OF HIGHWAYS W.P.A. STATE WIDE HIGHWAY PROJECTS STATE WIDE OFFICIAL PROJECT O.P. 665-42-1-119 HENRY COUNTY S.H. 310 SEC. A & B ROUTE 6 NET LENGTH OF PROJECT 4.404 MILES



Supplemental Prints of
Std Construction Dwg.

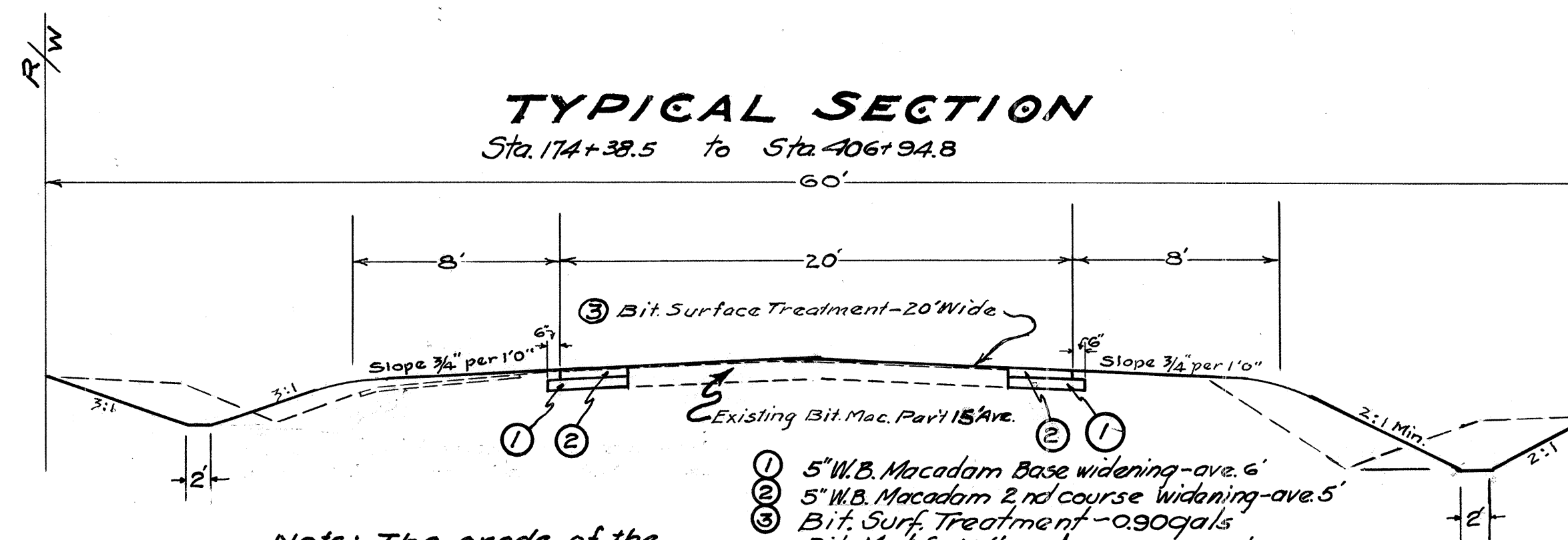
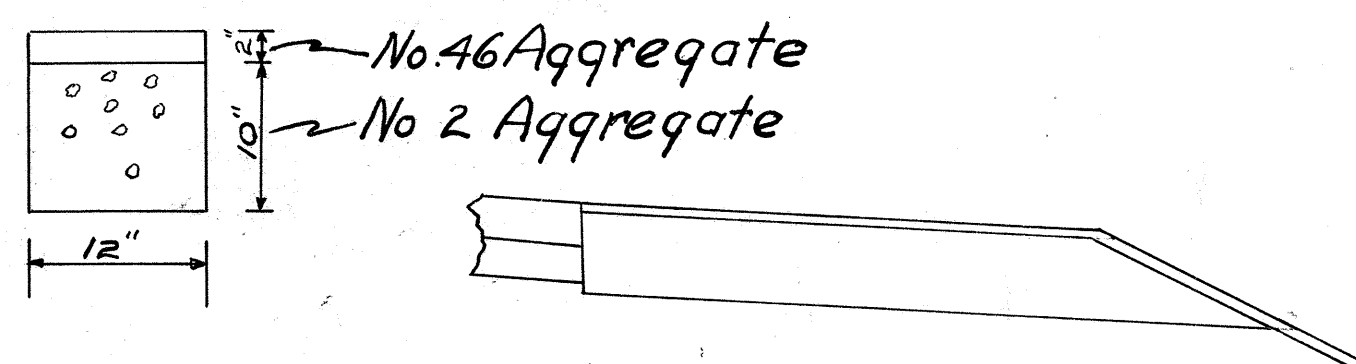
S-27 RC. 1
I-8-C.B. -1-2 & 2-2
I-8-C.B. -2-3

SUMMARY OF QUANTITIES			
ITEM	QUANTITY	UNIT	MATERIAL
E-1	11228	Cu.Yds.	Roadway Excavation
E-4	10116	Cu.Yds.	Borrow
E-9	10	Each	Removal of Stumps & Trees
I-1	450	Lin.Ft.	12" Pipe for Driveways
"	34	"	15" " " "
"	63	"	18" " " "
"	18	"	21" " " "
S-27	474	"	12" Pipe for Culverts
"	45	"	15" " " "
"	92	"	18" " " "
"	44	"	30" " " "
"	88	"	36" " " "
"	24	"	48" " " "
I-2	200	"	12" Pipe for Storm Sewers
I-2	12	"	18" " " "
I-2	150	"	21" " " "
I-3	1000	"	8" Pipe for Roadway Drainage
I-3	600	"	12" " " "
I-3	252	"	18" " " "
I-6	677	"	Relaying pipe (8" to 36" diam) (Only 8 of 36" to be relaid in an open ditch)
I-8	14	Each	No 1-2 Catch Basins
I-8	12	"	No 2-2 " "
I-8	2	"	No 2-3 " "
I-9	500	Lin.Ft.	Stone Underdrain
L-9	93000	Sq.Yds.	Seeding berms & Slopes
Special	90	Each	Right of Way Monuments Set
I-17	100	Cu.Yds.	Stone for drives & approaches (120 Tons)
I-10	29	Sq.Yds.	Rip Rap (salvaged stone)
S-1	11	Cu.Yds.	Class "C" Concrete in culvert outlet walls
S-4	19	Lbs.	Reinforcing steel
B-20	17200	Sq.Yds.	5" W.B. Macadam Base widening - 3465 Tons No 1/2 Stone - 1485 Tons Screenings
B-20	14600	"	5" W.B. Macadam 2nd course widening - 2940 Tons No 1-2 Stone - 1260 Tons "
T-31	51700	"	Bit. Surf. Treatment - 46530 gals. Bit. Mat - 1034 Tons No 46 Stone
S-22	35	Cu.Yds.	Removal of Portions of Exist. Structures (Conc. & Stone Hdls.)

Note:- The summary of quantities includes the following items which may be used for additions or replacements as directed by the Engineer
36 Lin. ft. 12" Drive Pipe
30 Lin. ft. 15" Culvert Pipe
32 Lin. ft. 30" " "
80 Lin. ft. 36" " "
31 Lin. ft. 12" Sewer Pipe
75 Lin. ft. 12" Pipe for Roadway Drainage

The right of way necessary for this improvement will be provided by the State of Ohio.

Stone Underdrain



Note: The grade of the widened pavement will be the same as that of the existing pavement.

Note:- Sta. 184+50 to 194+50 (Curve relocation) 1st & 2nd courses W.B. Mac. will be full width as shown

CONSTRUCTION BUREAU
JUN 1 1940
COLUMBUS, OHIO

I hereby approve these plans and declare that provision for maintenance and safety of traffic will be made as herein described. The making of this improvement will not require the closing to traffic of the highway. Two way traffic will maintained at all times & sufficient signs, lights & flagmen will be provided to safely control traffic.

Approved: J. S. Adams
Date 1/6/40 Resident Division Deputy Director

Approved: J. D. Murray
Date 4/7/40 Chief Engr. Bureau of Maintenance

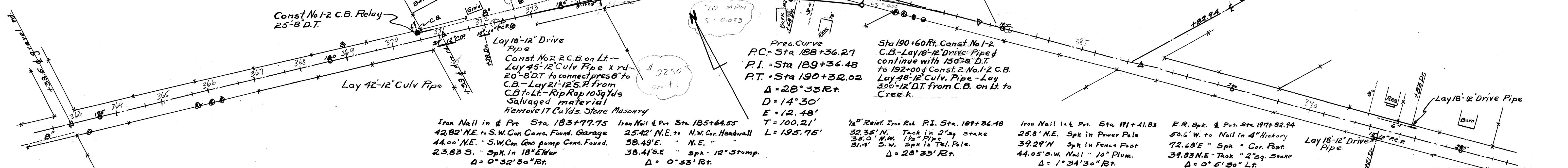
Approved: J. J. Jones
Date 1-18-40 First Asst Director-Chief Engr.

Approved: Robert D. Pugh
Date 1-18-40 Director of Highways

P.I. Sta 174+38.5 R.R. Spk in Pvt.
28' N.E. to Spk in Tel. Pole.
28.65' S.E. to Spk in Tel. Pole.
38.9' N.W. to Spk in Power Pole
43.96' N.W. to Spk in Anchor Post.
 $\Delta = 0^{\circ}06' Rt.$

Iron Nail in & Pvt. Sta 182+42.55
37.1' S.W. Spk in 1st Post W. Brace Post
64.35' E. Spk in Foundation of Garage
47.90' N.W. S.E. Cor. C.B.
 $\Delta = 0^{\circ}03'30" Rt.$

R.R. Spk & Pvt. Sta 194+54.00
50.45' N.E. to Nail in Anchor Post in Grape Arbor
48.5' E. " " " Gate "
25.35' N.E. " Spk. " Tel. Pole
30.12' S.W. " Tack " 2" sq. stake.
 $\Delta = 0^{\circ}26' Rt.$



B.M. Elev. 717.67
Spk. in 10" Walnut
25' Lt & Sta 171+71

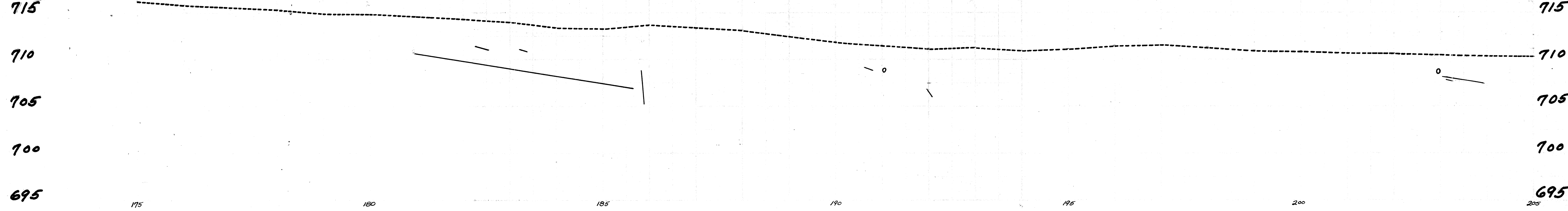
B.M. Elev. 715.45
Spk. in Power Pole
23' Lt & Sta 178+00

B.M. Elev. 712.86
SE Cor. Base of Gas Pump
30' Lt & Sta 184+15

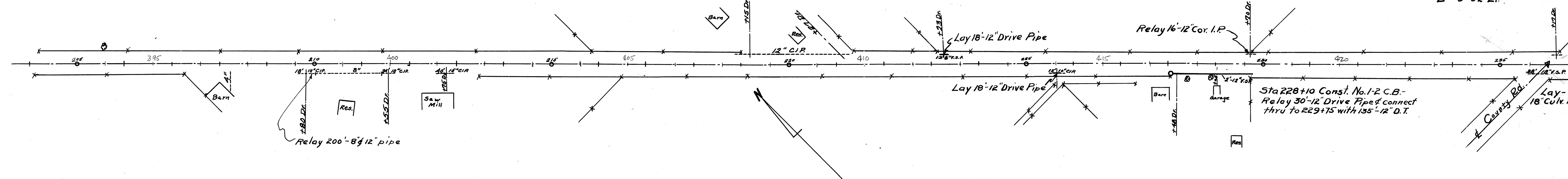
B.M. Elev. 712.10
Spk. in Telephone Pole
70' Lt & Sta 190+99

B.M. Elev. 711.32
Spk. in 15" Cottonwood
32' Lt & Sta 197+77

B.M. Elev. 710.00
Spk. in 15" Cottonwood
32' Lt & Sta 204+81



R.R. Spk in & Pvt. Sta. 235+97.40
41.97' S.W. to Spk in N. Side Power Pole
28.38' S.W. " " " S. " "
37.60' N.E. " near side Anchor Post
 $\Delta = 0^{\circ}02' Lt.$

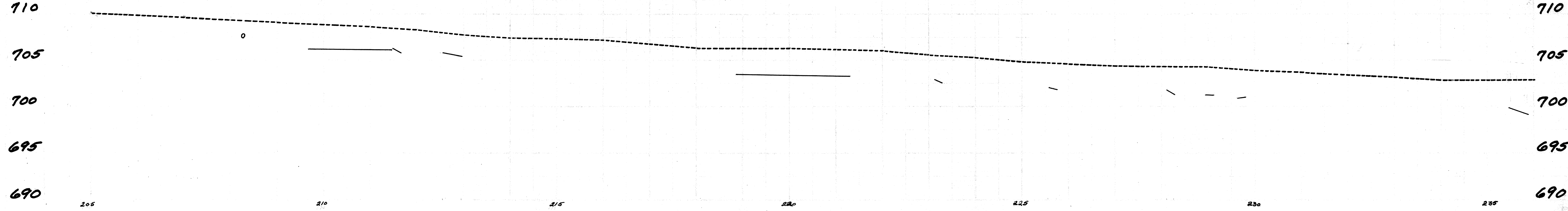


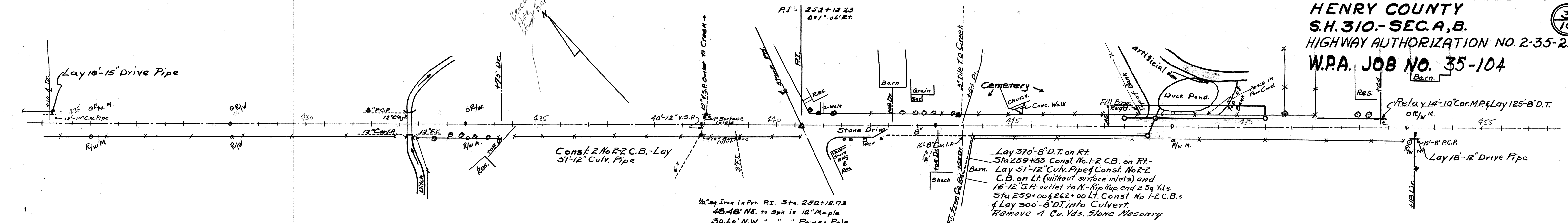
B.M. Elev. 708.65
Spk. in 12" Evergreen
50' Rt & Sta 210+46

B.M. Elev. 706.90
Spk. in N.E. Side 3rd Fence Post
45' Rt & Sta 216+46

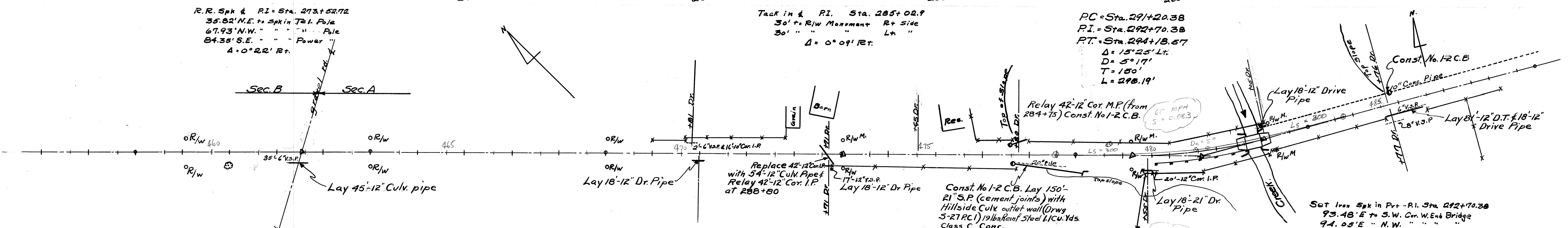
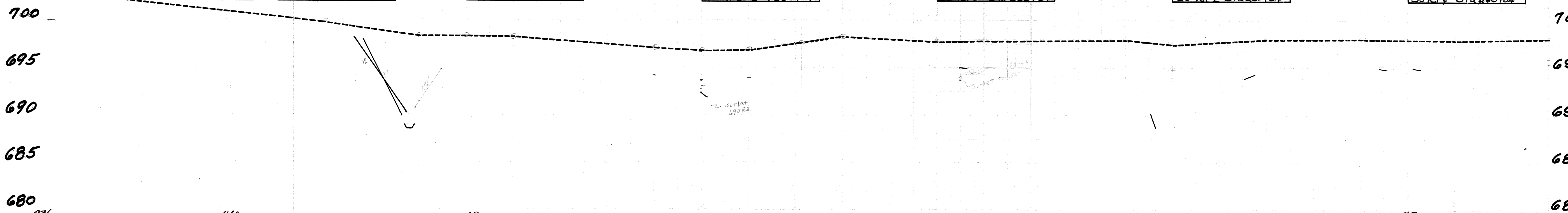
B.M. Elev. 705.20
Spk. in S. Side 1st Post N. of Brace Post
45' Lt & Sta 223+00

B.M. Elev. 703.51
in W. Side Conc. Entrance Slab
to Garage 45' Rt & Sta 229+00

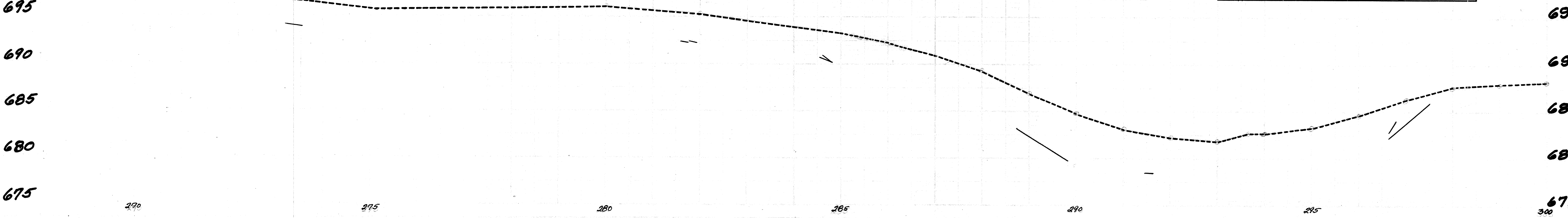




- B.M. Elev. 702.73
R.R. Spk in Power Pole
45' Rt & Sta 235+88
- B.M. Elev. 700.73
Top R/W Marker
30' Lt & Sta 240+04
- B.M. Elev. 697.28
Top R/W Marker
30' Lt & Sta 245+04
- B.M. Elev. 696.13
Top R/W Marker
30' Rt & Sta 250+04
- B.M. Elev. 697.01
Top R/W Marker
30' Rt & Sta 255+04
- B.M. Elev. 696.63
Top R/W Marker
30' Rt & Sta 260+04
- B.M. Elev. 696.73
Top R/W Marker
30' Rt & Sta 265+04

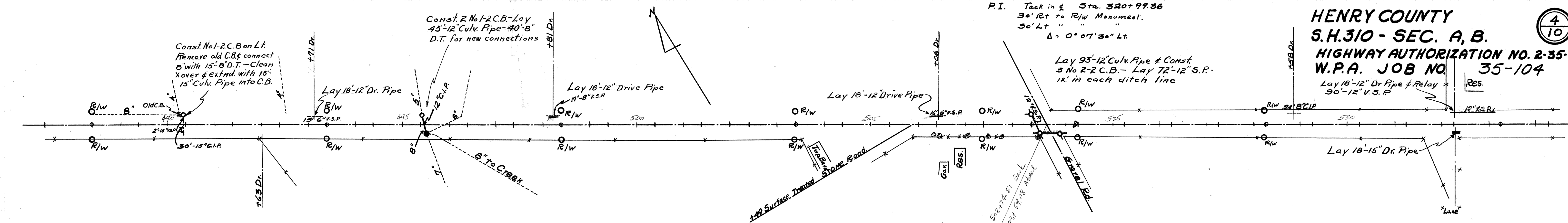


- B.M. Elev. 696.64
Top R/W Marker
30' Rt & Sta 270+04
- B.M. Elev. 694.88
Top R/W Marker
30' Rt & Sta 275+04
- B.M. Elev. 695.60
Top R/W Marker
30' Rt & Sta 280+03
- B.M. Elev. 692.55
Top R/W Marker
30' Lt & Sta 285+02.9
- B.M. Elev. 686.79
Spk. in Power Pole
29' Rt & Sta 291+37
- B.M. Elev. 686.38
Top of End Post of Bridge Rail
Rt & Sta 293+83
- B.M. Elev. 689.22
Top R/W Marker
30' Lt & Sta 300+00



HENRY COUNTY
S.H.310 - SEC. A, B.
HIGHWAY AUTHORIZATION NO. 2-35-2
W.P.A. JOB NO. 35-104

4
10



B.M. Elev. 689.22
Top R/W Monument
30' Lt & Sta 300+00

B.M. Elev. 686.18
Top R/W Monument
30' Lt & Sta 305+00

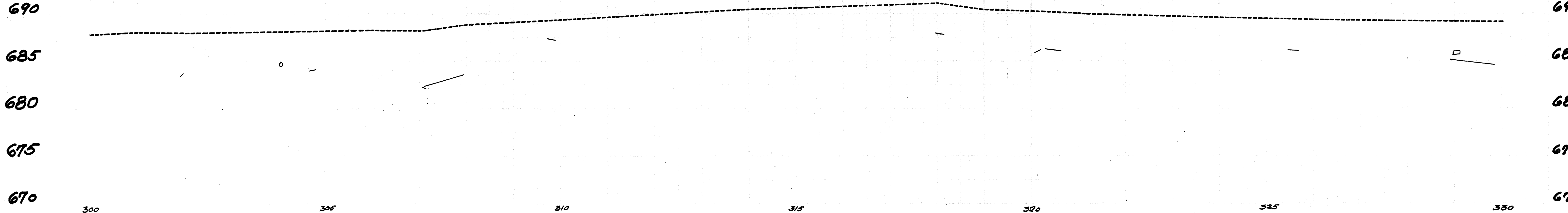
B.M. Elev. 688.93
Top R/W Monument
30' Lt & Sta 310+00

B.M. Elev. 690.06
Top R/W Monument
30' Lt & Sta 315+00

B.M. Elev. 689.13
Top R/W Monument
30' Lt & Sta 319+00

B.M. Elev. 688.47
Top R/W Monument
30' Lt & Sta 321+00

B.M. Elev. 687.93
Top R/W Monument
30' Lt & Sta 325+00



B.M. Elev. 687.39
Top R/W Monument
30' Lt & Sta 330+00

B.M. Elev. 686.39
Top R/W Monument
30' Lt & Sta 335+00

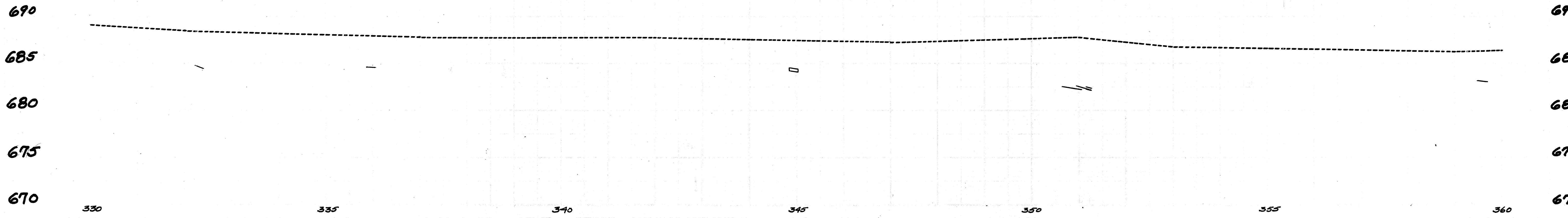
B.M. Elev. 686.25
Top R/W Monument
30' Lt & Sta 340+00

B.M. Elev. 686.01
Top R/W Monument
30' Lt & Sta 345+00

B.M. Elev. 686.09
Top R/W Monument
30' Lt & Sta 350+00

B.M. Elev. 685.40
Top R/W Monument
30' Lt & Sta 355+00

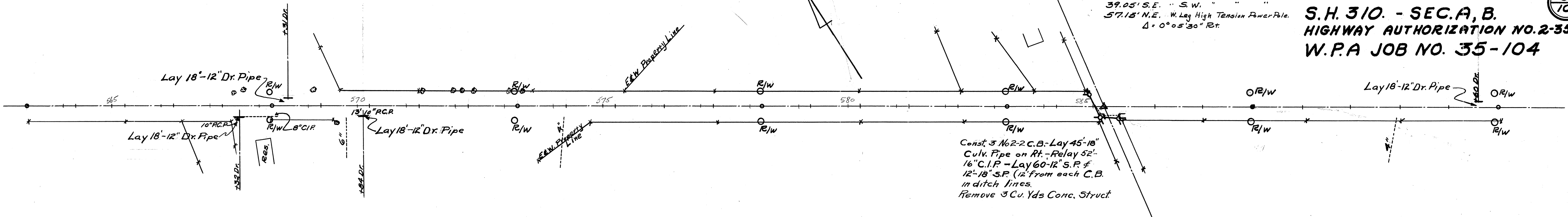
B.M. Elev. 685.41
Top R/W Monument
30' Lt & Sta 360+00



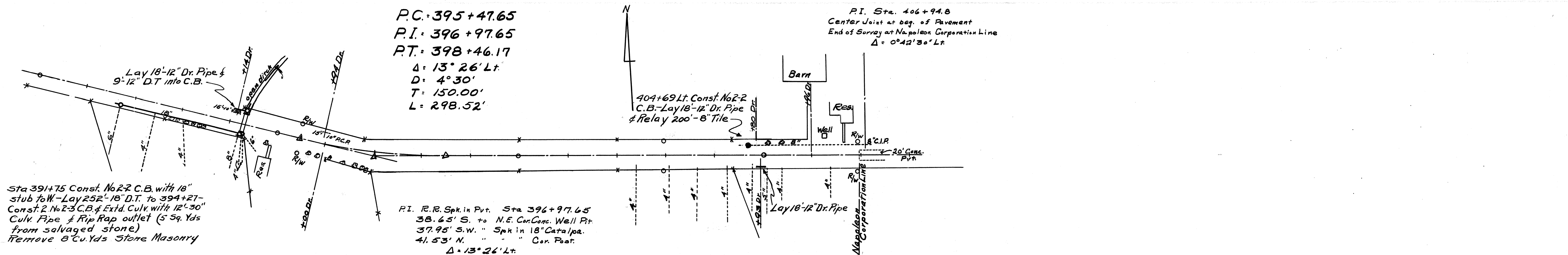
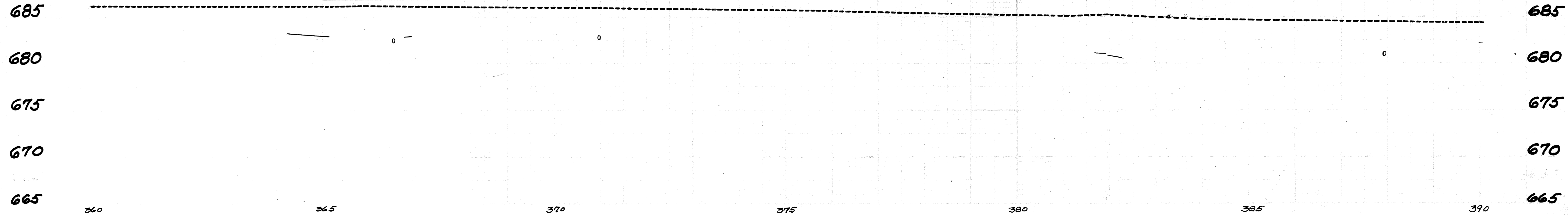
P.I. R.R. Spk. in & Pt. Sta. 350+99.12
13.85' N. to S.E. Cor. Wingwall
20.05' N.E. " N.E. Cor. Bridge Rail.
25.95' S.E. " S.W. " "
 $\Delta = 0^{\circ}01'20''$ Rt.

P.I. R.R. Spk in & Pvt. Sta 381+97.6
 21.95' S.W. to S.E. Cor. Conc. Headwall.
 39.05' S.E. " S.W. "
 57.15' N.E. " W. Leg High Tension Power Pole.
 Δ = 0°05'30" Rt.

HENRY COUNTY
S.H. 310. - SEC. A, B.
HIGHWAY AUTHORIZATION NO. 2-35-2.
W.P.A JOB NO. 35-104



- B.M. Elev. 685.16
Top R/W Monument
36' Lt & Sta 365+00
- B.M. Elev. 684.79
Top R/W Monument
36' Rt & Sta 370+00
- B.M. Elev. 684.47
Top R/W Monument
36' Lt & Sta 375+00
- B.M. Elev. 684.19
Top R/W Monument
36' Lt & Sta 380+00
- B.M. Elev. 684.16
Top R/W Monument
36' Lt & Sta 385+00
- B.M. Elev. 683.63
Top R/W Monument
36' Rt & Sta 390+00



Sta 391+75 Const. No. 2 C.B. with 18" stub to W - Lay 252-18" D.T. to 394+27 - Const. 2 No. 2 C.B. & Extd. Culv. with 12-30" Culv. Pipe & Rip Rap outlet (5 Sq. Yds from salvaged stone) Remove 3 Cu. Yds Stone Masonry

P.I. R.R. Spk. in Pvt. Sta 396+97.65
 38.65' S. to N.E. Cor. Conc. Well Pit
 37.95' S.W. " Spk in 18" Catalpa.
 41.53' N. " " " Cor. Post.
 Δ = 13°26' Lt.

- B.M. Elev. 683.04
Top R/W Monument
36' Rt & Sta 395+48
- B.M. Elev. 682.93
Top R/W Monument
36' Lt & Sta 398+46
- B.M. Elev. 682.41
Top R/W Monument
36' Lt & Sta 403+00
- B.M. Elev. 681.00
Top R/W Monument
36' Lt & Sta 406+93

