

STATE OF OHIO
DEPARTMENT OF TRANSPORTATION

HEN - 6 - 14.20

LIBERTY TOWNSHIP
HENRY COUNTY

PART 2 (Part 1 - See HEN-6/24-II.42/96I)

OHIO	1
FHWA REGION 5	26
FEDERAL PROJECT	

FR-73(42)
HEN - 6 - 14.20

QUANTITIES
CALC BY J.C.V. DATE 2-23-82
CHK BY BJS DATE 10-24-82

LIMITED ACCESS

This improvement is especially designed for through traffic and has been declared a limited access highway or freeway by action of the Director in accordance with the provisions of Section 5511.02 of the Revised Code of Ohio.

1985 SPECIFICATIONS

The standard specifications of the State of Ohio, Department of Transportation, including changes and supplemental specifications listed in the proposal shall govern this improvement.

I hereby approve these plans and declare that the making of this improvement will not require the closing of the highway to traffic and that provisions for the maintenance and safety of traffic will be as set forth on these plans and estimates.

CONVENTIONAL SIGNS

County Line	-----	Limited Access (only)	----- LA -----
Township Line	-----	Right of Way (only)	----- RW -----
Section Line	-----	Limited Access & Right of Way	----- LA & RW -----
Corporation Line	----- or -----	Existing Right of Way	-----
Fence Line (existing)	-x-x-	Property Line	— — (in existing fence) -x-x-
Center Line	352 or 353	Railroad	----- or -----
Trees	☉, ☉, ☉ (to be removed) ☉, ☉	Guardrail (existing)	—••••• (proposed) —•••••
Utility Poles: Telephone	φ	Construction Limits	-----
Power	φ		
Light	φ		

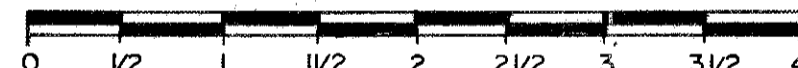
INDEX OF SHEETS

Title Sheet	-----	1
Schematic Plan & Design Designation	-----	2
Typical Section	-----	3
General Notes	-----	4-6
Subsummaries	-----	7-8
General Summary	-----	9
Plan and Profile	-----	10-12
Cross Sections	-----	13-21
Intersection Details	-----	22
Drainage Details	-----	23
Construction Details	-----	24
Maintenance of Traffic Details	-----	25, 26



LOCATION MAP

SCALE IN MILES



Portion to be improved	-----
State & Federal Routes	-----
Other Roads	-----

SCALES

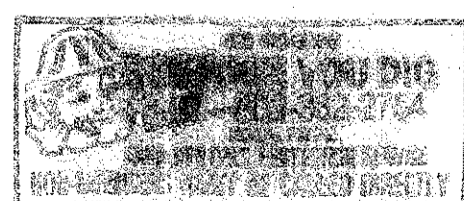
Plan	-----	0 25 50 100
Profile: Horizontal	-----	0 25 50 100
Profile: Vertical	-----	0 2 4 6 8 10
Cross Section: Horizontal	-----	0 5 10 15 20
Cross Section: Vertical	-----	0 5 10 15 20

SUPPLEMENTAL SPECIFICATIONS	

LINE DATA
See Sht. No. 1 Part 1

Project Length
Begin Project Sta. 746+59.00
End Project Sta. 771+68.77
Total Length of Work = 24.79 Sta. R/L or 24.79 Sta.

Work Length
Begin Work Sta. 746+59.00
End Work Sta. 771+68.77
Total Length of Work = 24.79 Sta. R/L or 24.79 Sta.



Plan Prepared By:

Ohio Department of Transportation
District 2
Design Office

SEAL

SUPPLEMENTAL PRINTS OF STANDARD CONSTRUCTION DRAWINGS

SEE PART 1 FOR SUPPLEMENTAL PRINTS & SPECIFICATIONS

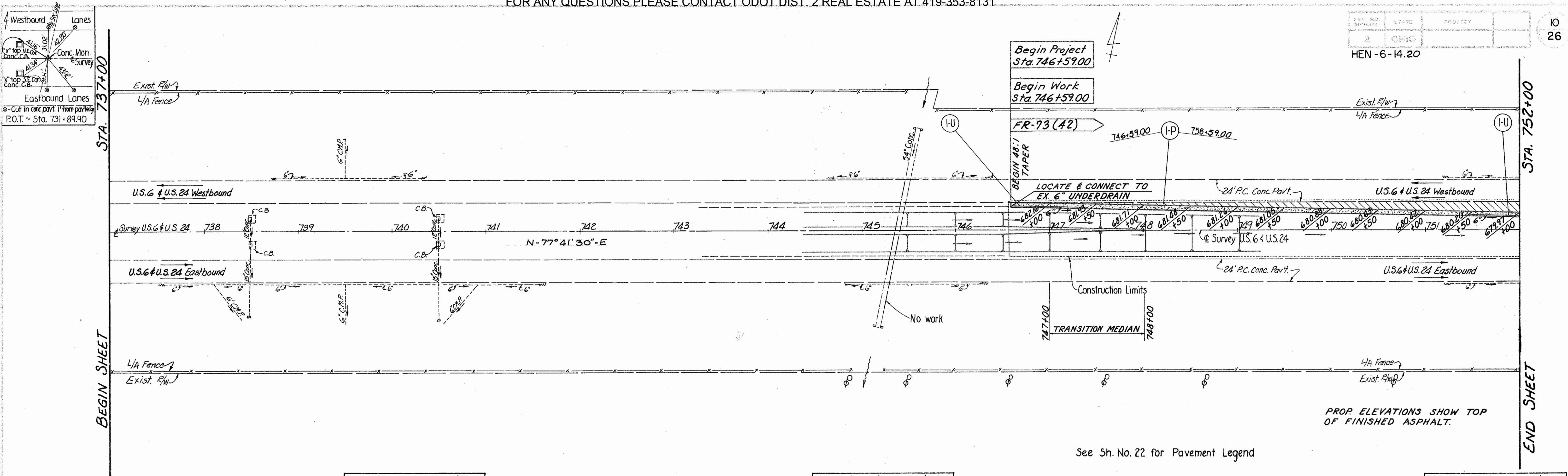
DEPARTMENT OF TRANSPORTATION
FEDERAL HIGHWAY ADMINISTRATION

APPROVED :

DIVISION ADMINISTRATOR

DATE

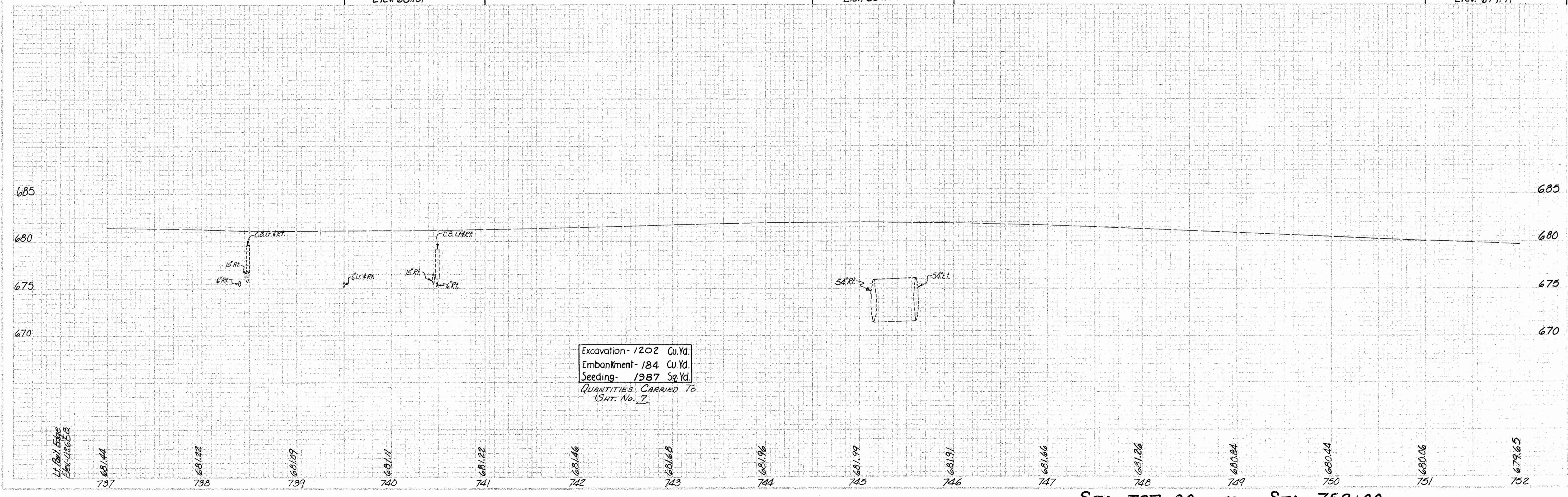
Project: HEN - 6 - 14.16
Date of Letting: 19__ Contract No. _____
LD0300 Rev. 11-21-73

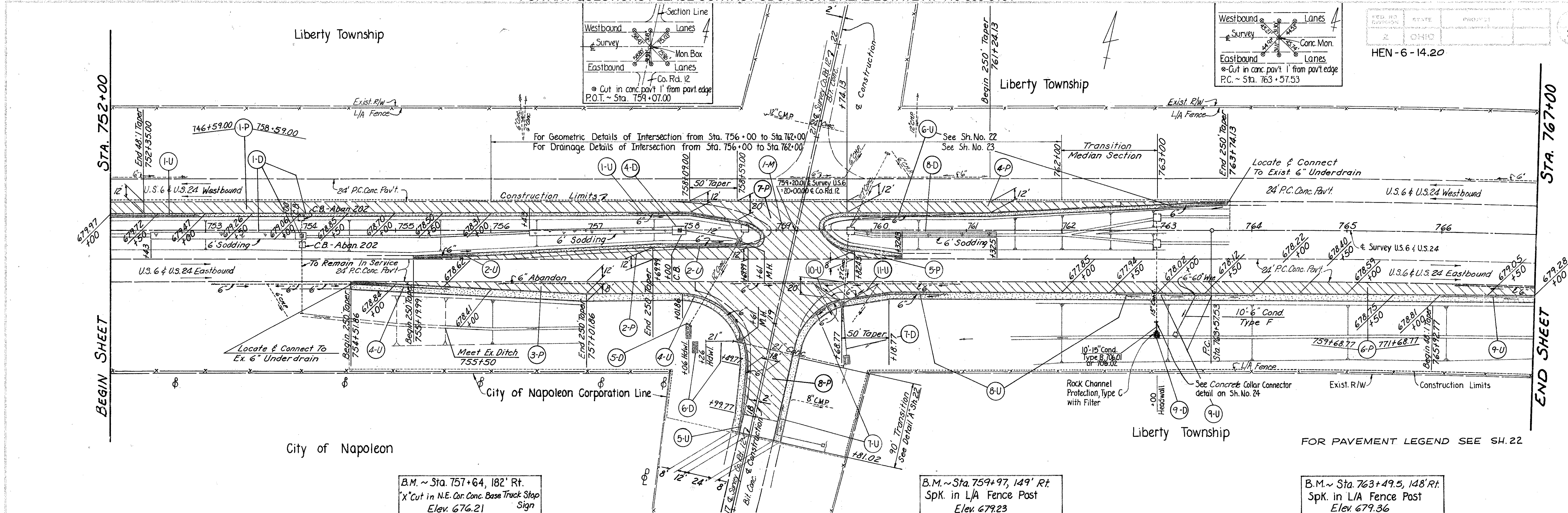


B.M. ~ Sta. 740+50, 148' Rt.
Spk. in L/A Fence Post
Elev. 681.01

B.M. ~ Sta. 745+22, 148' Rt.
Spk. in L/A Fence Post
Elev. 680.54

B.M. ~ Sta. 751+39, 148' Rt.
Spk. in L/A Fence Post
Elev. 679.91

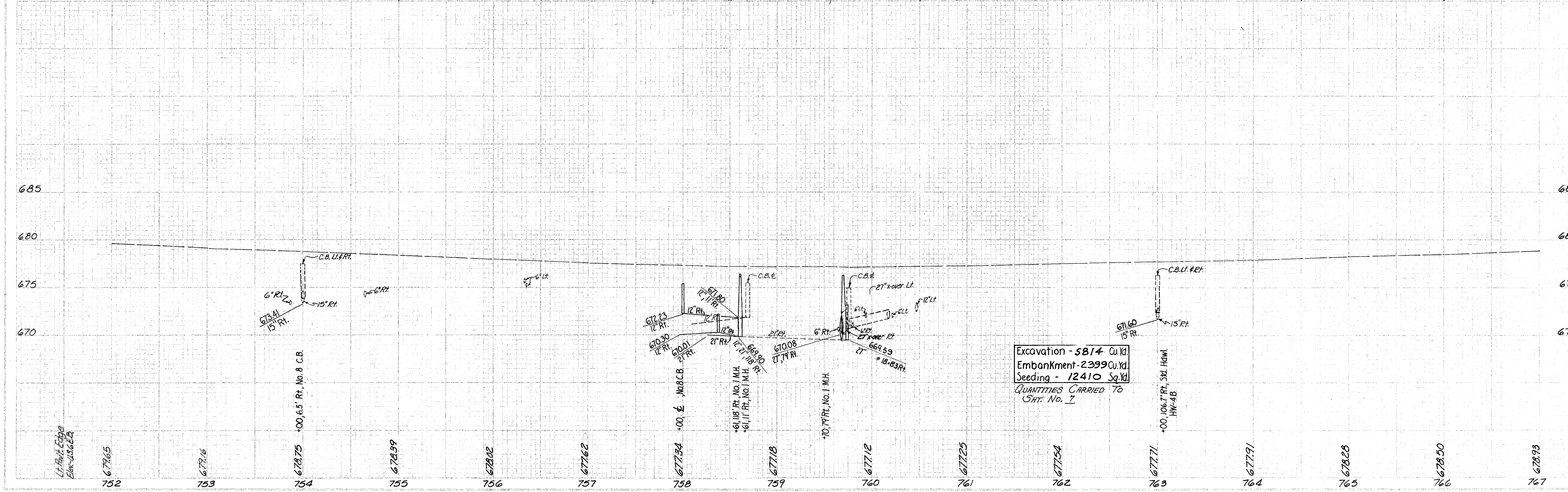




B.M. ~ Sta. 757+64, 182' Rt.
"X" Cut in N.E. Cor. Conc. Base Track Stop
Elev. 676.21

B.M. ~ Sta. 759+97, 149' Rt.
Spk. in L/A Fence Post
Elev. 679.23

B.M. ~ Sta. 763+49.5, 148' Rt.
Spk. in L/A Fence Post
Elev. 679.36



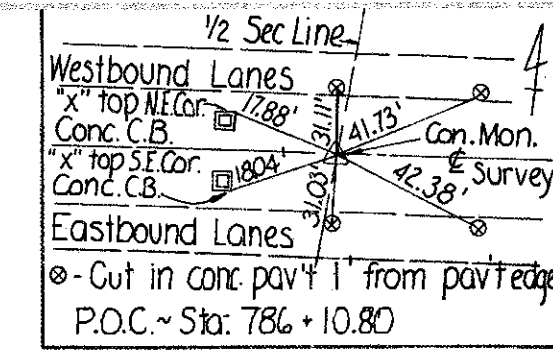
STA. 752+00 TO STA. 767+00

End Project
Sta. 771+68.77

End Work
Sta. 771+68.77

FR-73(42)

EXISTING CURVE DATA
P.I. - Sta. 777+02.15
 $\Delta = 12^{\circ}30' \text{ Rt.}$ $L = 2,678.57'$
 $D = 0^{\circ}28'$ $T = 1,344.62'$
 $R = 12,277.67'$ $E = 73.41'$



FED. HD.	STATE	PROJECT
2	OHIO	

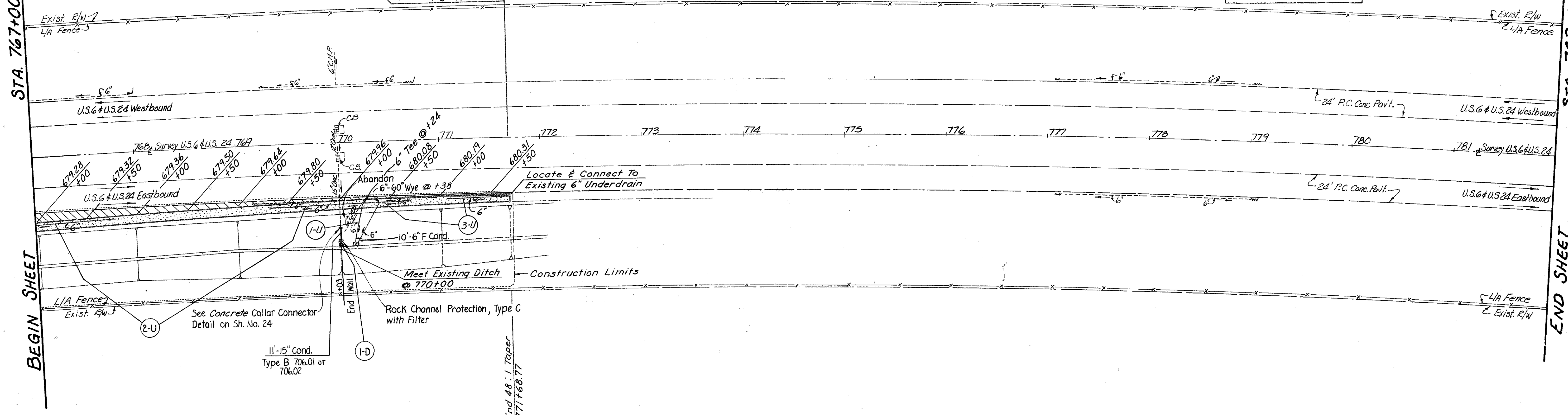
HEN-6-14.20

STA. 767+00

STA. 782+00

BEGIN SHEET

END SHEET

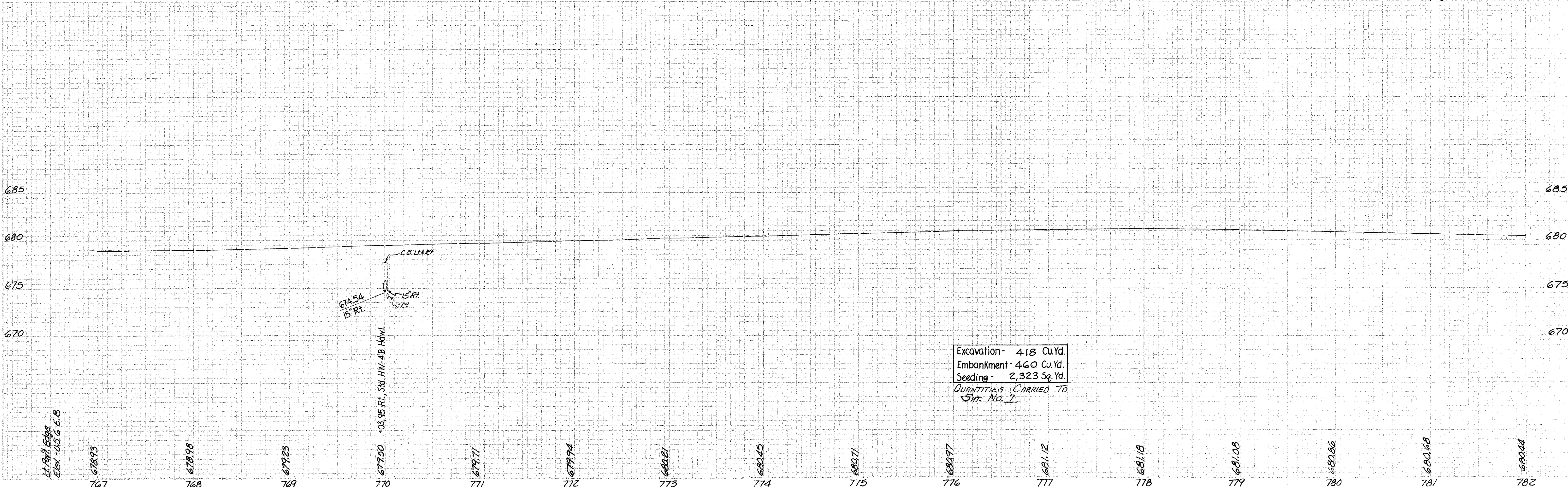


B.M. ~ Sta. 770+00, 148' Rt.
Spk. in L/A Fence Post
Elev. 679.53

B.M. ~ Sta. 775+91, 148' Rt.
Spk. in L/A Fence Post
Elev. 679.22

B.M. ~ Sta. 782+00, 148' Rt.
Spk. in L/A Fence Post
Elev. 676.88

B.M. ~ Sta. 794+95, 70' Et.
4" cut in N.W. cor. conc. base overhead sign
Elev. 678.07



Excavation - 418 Cu. Yd.
Embankment - 460 Cu. Yd.
Seeding - 2,323 Sq. Yd.
QUANTITIES CARRIED TO STR. NO. 1

STA. 767+00 TO STA. 782+00