

HENRY COUNTY
I.C.H. 286 SEC. 'Q'
HEN-6-17.75-22.30



Charles E. & Jennie Watkins



West half of south
half of Quarter Sec. 23 East half of south
half of Quarter Sec. 23

10' south 1/2 post
963 + 76.50

Charles E. & Jennie Watkins.



SEC. 23

SEC. 24

sec. line
990 + 03

James G. & Bessie Watson



east half of south
half of Quarter Sec. 23

SEC. 26

SEC. 25

sec. line

James G. & Bessie Watson



West half of the north
half of Quarter Sec. 25

section line

old R/W Line

141 2112
1912
R2006
#3
B-18

B-18

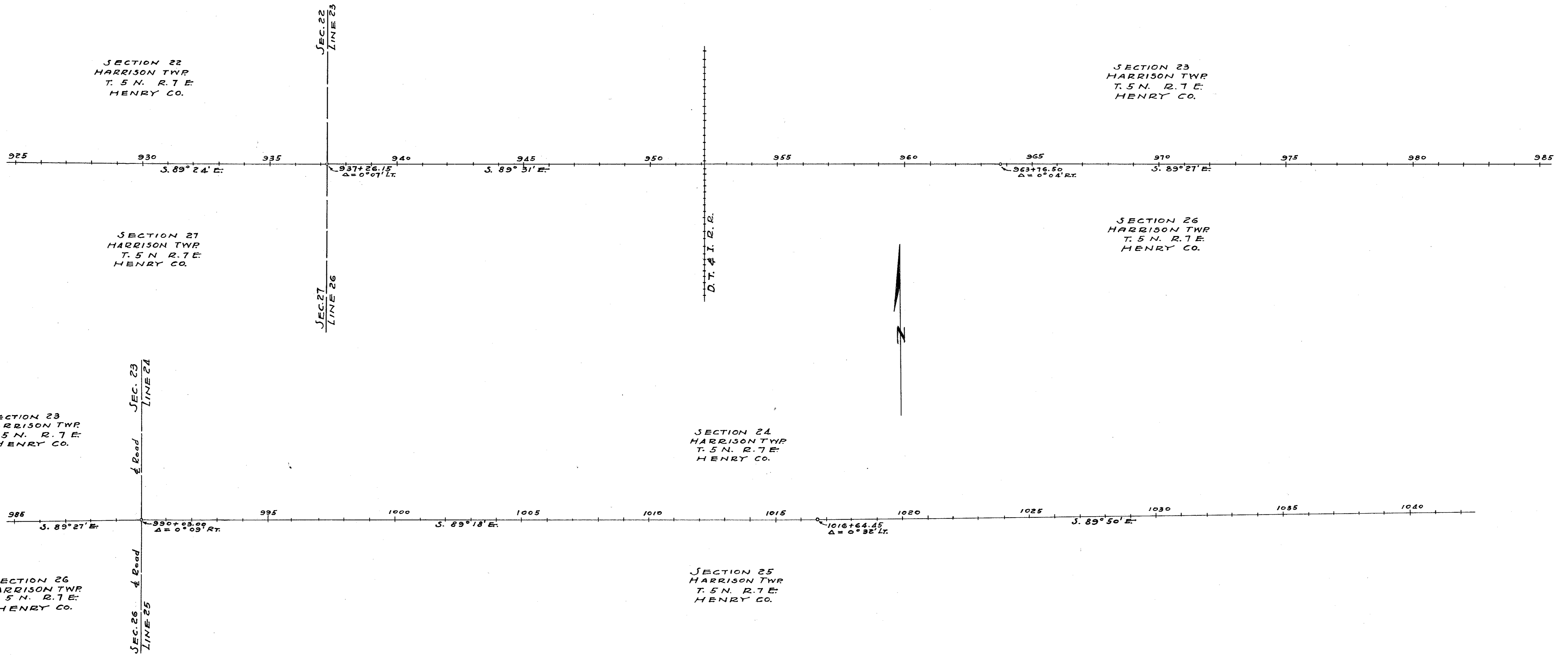
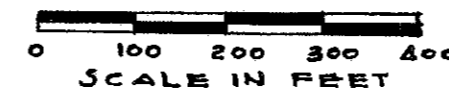
LOCATION PLAN

HEM-6-17.75-22.38

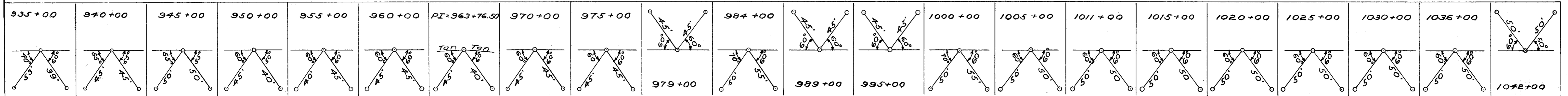
BOWLING GREEN-NAPOLEON ROAD

DEPARTMENT OF HIGHWAYS - STATE OF OHIO

1949



CENTERLINE REFERENCE MONUMENTS WILL BE SET BEFORE OR AFTER CONSTRUCTION

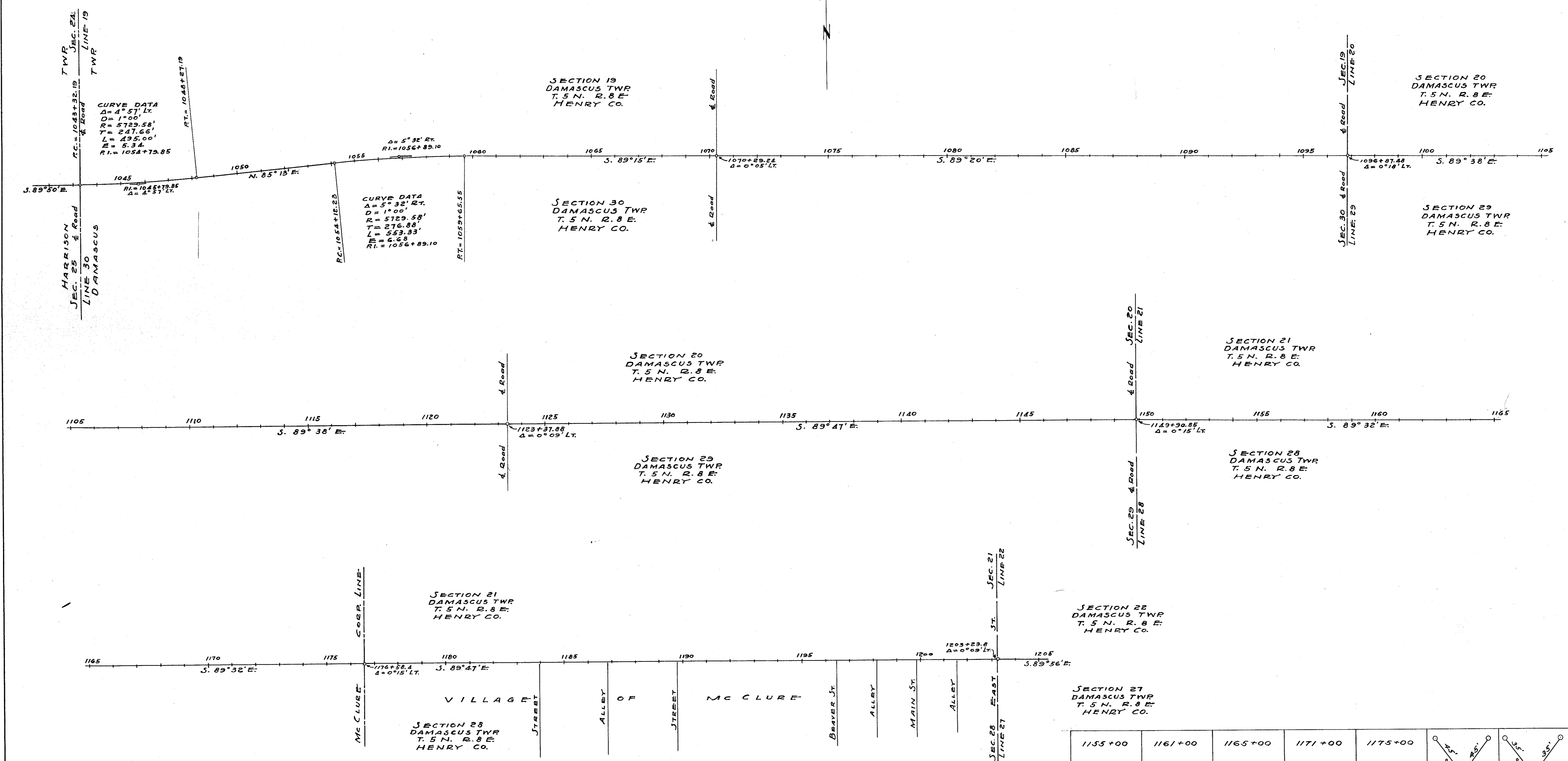


Scanned June 1997

R20068

#1

B-33



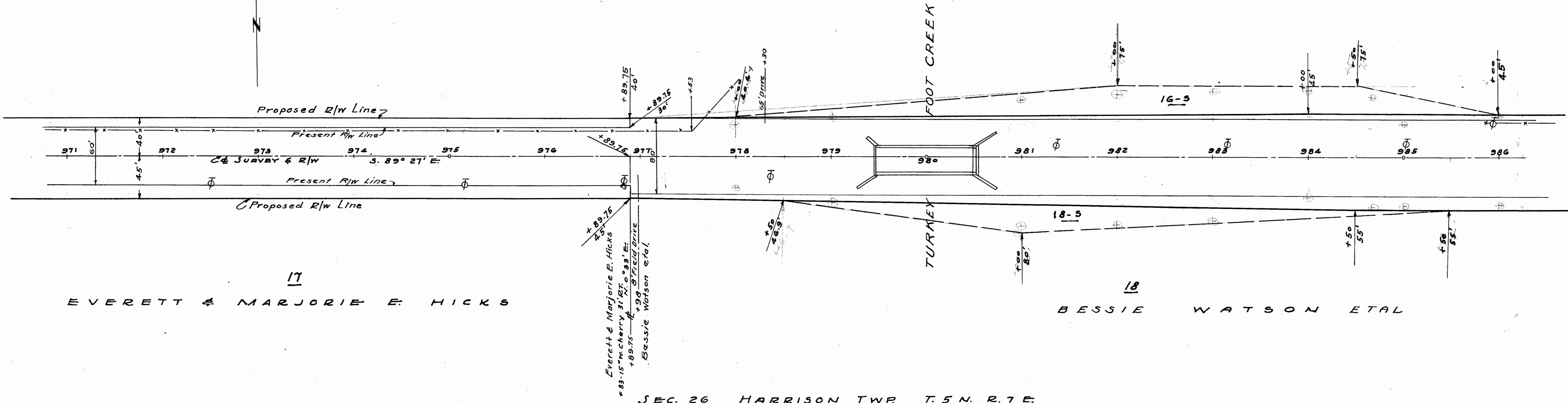
CENTER LINE REFERENCE MONUMENTS WILL BE SET BEFORE OR AFTER CONSTRUCTION

PI=1045+79.85	1050+00	PI=1056+89.10	1061+00	1065+00	1072+00	1076+00	1080+00	1085+00	1090+00	1095+00	1100+00	1105+00	1110+00	1115+00	1120+00	1125+00	1130+00	1135+00	1140+00	1145+00	1150+00	1155+00	1161+00	1165+00	1171+00	1175+00	1180+00	1185+00

16
 WALTER E. WATKINS ETAL

FOOT CREEK

TURKEY



17
 EVERETT & MARJORIE E. HICKS

18
 BESSIE WATSON ETAL

SEC. 26 HARRISON TWP T. 5 N. R. 1 E.
 SEC. 24 HARRISON TWP T. 5 N. R. 1 E.

SEC. 23

16
 WALTER E. WATKINS ETAL

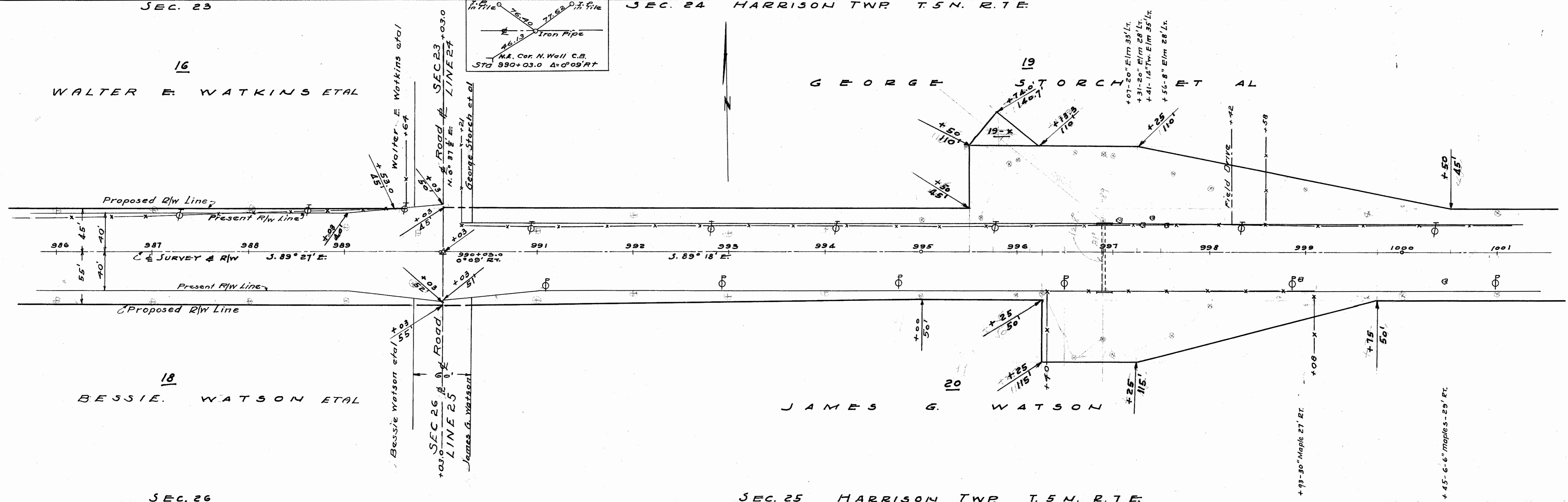
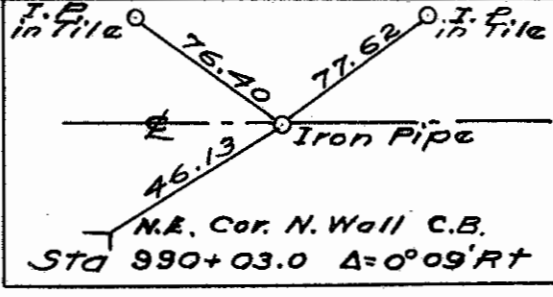
19
 GEORGE STORCH ET AL

18
 BESSIE WATSON ETAL

10
 JAMES G. WATSON

SEC. 26

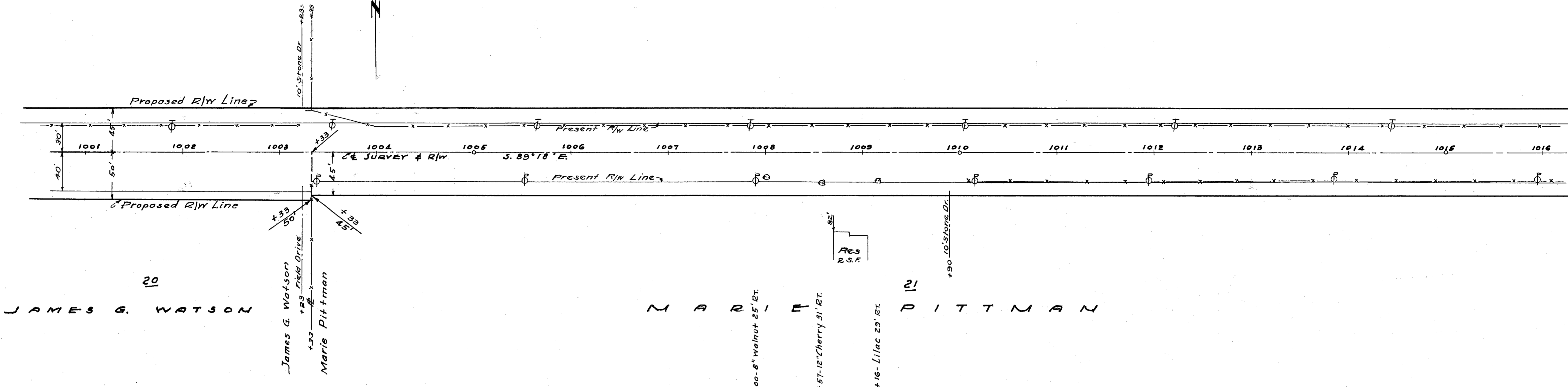
SEC. 25 HARRISON TWP T. 5 N. R. 1 E.



Scanned
 Date
 1/19/7

19

G E O R G E S T O R C H E T A L

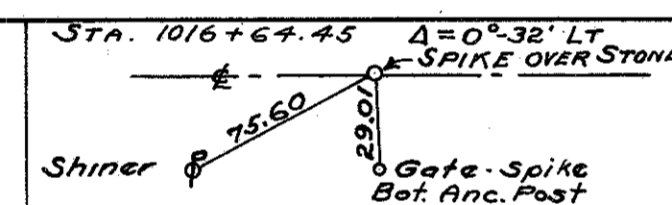


20

JAMES G. WATSON

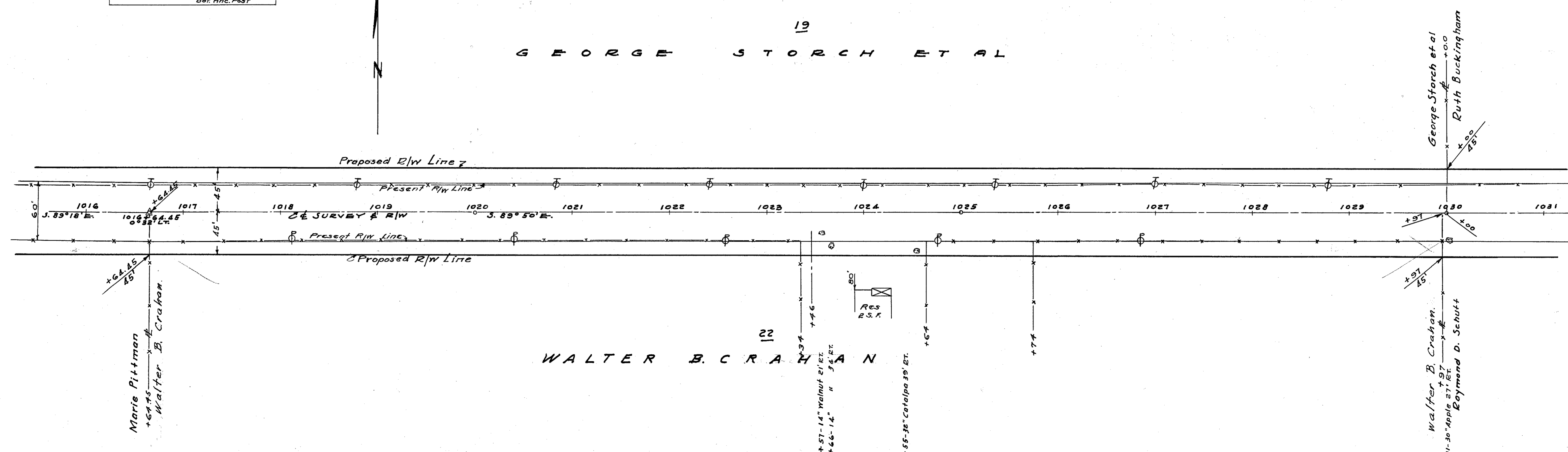
M A R I E P I T T M A N

SEC. 25 HARRISON TWP. T. 5 N. R. 7 E.
SEC. 24 HARRISON TWP. T. 5 N. R. 7 E.



19

G E O R G E S T O R C H E T A L



22

W A L T E R B. C R A H A N

SEC. 25 HARRISON TWP. T. 5 N. R. 7 E.

SEC. 24 HARRISON TWP. T 5 N R 7 E

NOTE:
FARMERS MUTUAL TELEPHONE CO.
OF McCLURE, POLES ON NORTH
SIDE OF ROAD.
THE TOLEDO EDISON CO., DEFIANCE,
OHIO, POLES ON SOUTH SIDE
OF ROAD.

HENRY COUNTY
HEN-6 (17.75-22.38)

R/W PLANS

DATE 6-15-49 DRAWN BY M.J.F.J.S.
REVISED 7-6-49 BY JAG 8/14/49
LENGTH OF PROJECT 5.112 Miles

SEC. 19 DAMASCUS TWP. T 5 N R 8 E



RUTH BUCKINGHAM

RAYMOND D. SCHUTT

RICHARD STORCH ET AL

SEC. 25 HARRISON TWP. T 5 N R 7 E
SEC. 19 DAMASCUS TWP. T 5 N R 8 E

SEC. 20 DAMASCUS TWP. T 5 N R 8 E

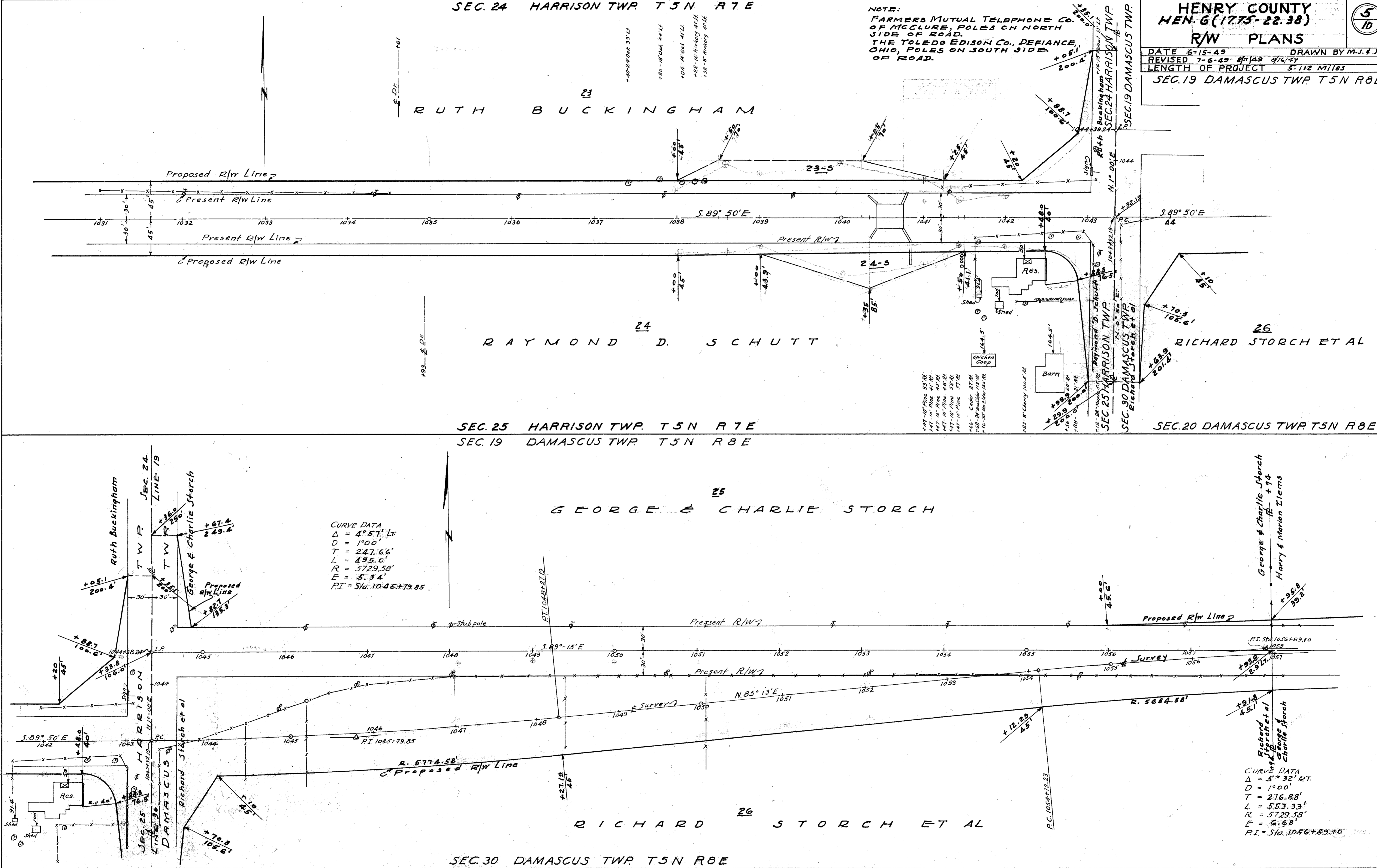
GEORGE & CHARLIE STORCH


RICHARD STORCH ET AL

SEC. 30 DAMASCUS TWP. T 5 N R 8 E

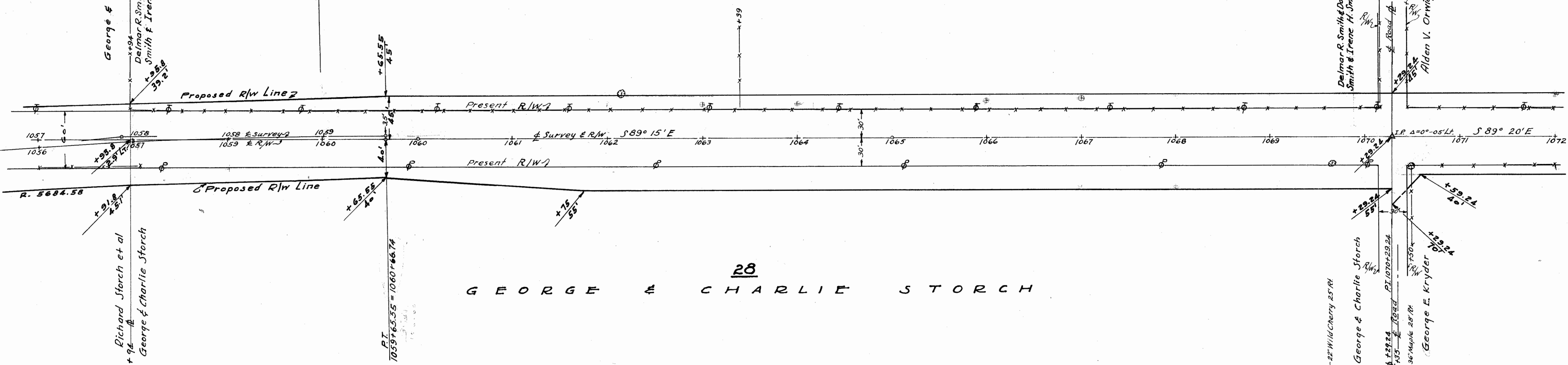
CURVE DATA
 $\Delta = 4^{\circ} 57' 17''$ LT
 $D = 1^{\circ} 00'$
 $T = 247.66'$
 $L = 195.0'$
 $R = 5729.58'$
 $E = 5.34'$
 $P.I. = Sta. 1045+79.85$

CURVE DATA
 $\Delta = 5^{\circ} 32' 12''$ RT
 $D = 1^{\circ} 00'$
 $T = 276.88'$
 $L = 553.33'$
 $R = 5729.58'$
 $E = 6.68'$
 $P.I. = Sta. 1056+89.10$



HENRY COUNTY		
HEN. 6 (17.75 - 22.38)		
R/W PLANS		
DATE 6-15-49	DRAWN BY W.J.E.J.S.	
REVISED 8/14/49		
LENGTH OF PROJECT 5.112 MILES		

27
DELMAR R. SMITH & DONALD F. SMITH & IRENE H. SMITH

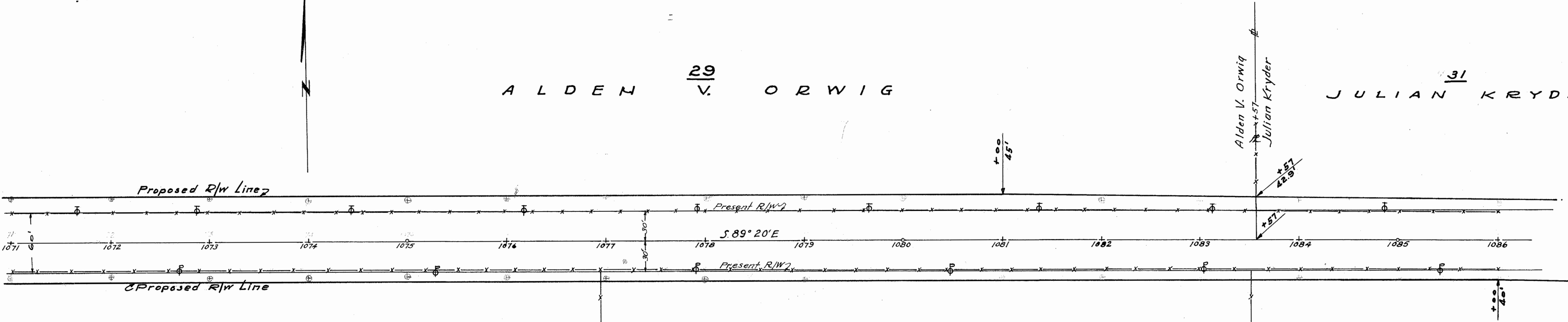


28
GEORGE & CHARLIE STORCH

SEC. 30 DAMASCUS TWP T 5 N R 8 E
SEC. 19 DAMASCUS TWP T 5 N R 8 E

29
ALDEN V. ORWIG

31
JULIAN KRYDER



30
GEORGE E. KRYDER

SEC. 30 DAMASCUS TWP T 5 N R 8 E

HENRY COUNTY
HEN. 6 (17.75-22.38)
R/W PLANS

DATE 6-15-49
 REVISED 6/16/79
 LENGTH OF PROJECT 5.112 Miles

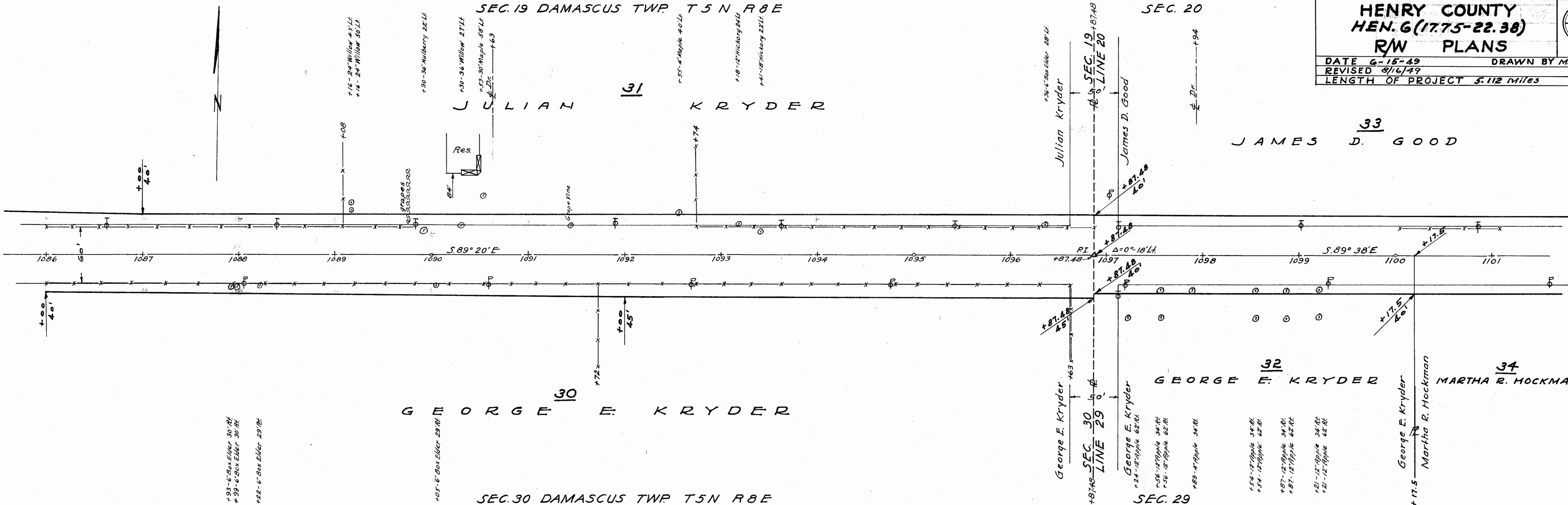
DRAWN BY M.J. & J.S.

SEC. 19 DAMASCUS TWP T5 N R8 E

SEC. 20

JULIAN KRYDER

JAMES D. GOOD



SEC. 30 DAMASCUS TWP T5 N R8 E

SEC. 29

GEORGE E. KRYDER

GEORGE F. KRYDER

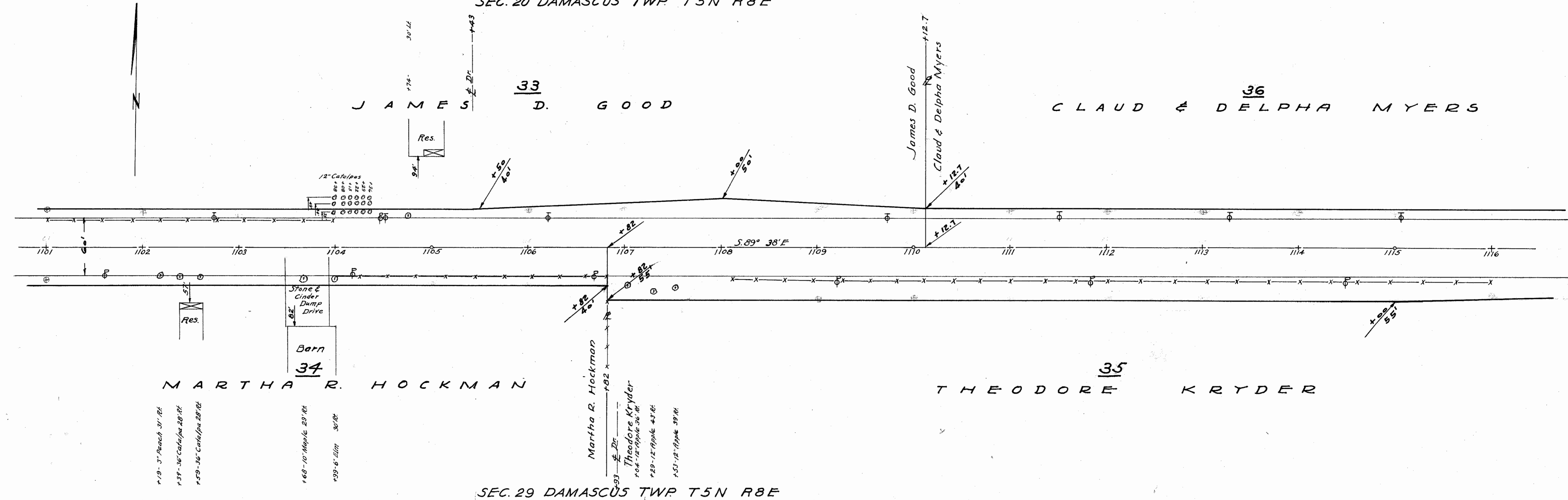
MARTHA R. HOCKMAN

SEC. 30 DAMASCUS TWP T5 N R8 E

SEC. 20 DAMASCUS TWP T5 N R8 E

JAMES D. GOOD

CLAUD & DELPHA MYERS



SEC. 29 DAMASCUS TWP T5 N R8 E

MARTHA R. HOCKMAN

THEODORE KRYDER

SCANNED June 1997

HENRY COUNTY
HEN-6 (17.75 - 22.38)
R/W PLANS

DATE 6-15-49 DRAWN BY M.J.F.J.S.
 REVISED 9/6/49
 LENGTH OF PROJECT 5.112 Miles

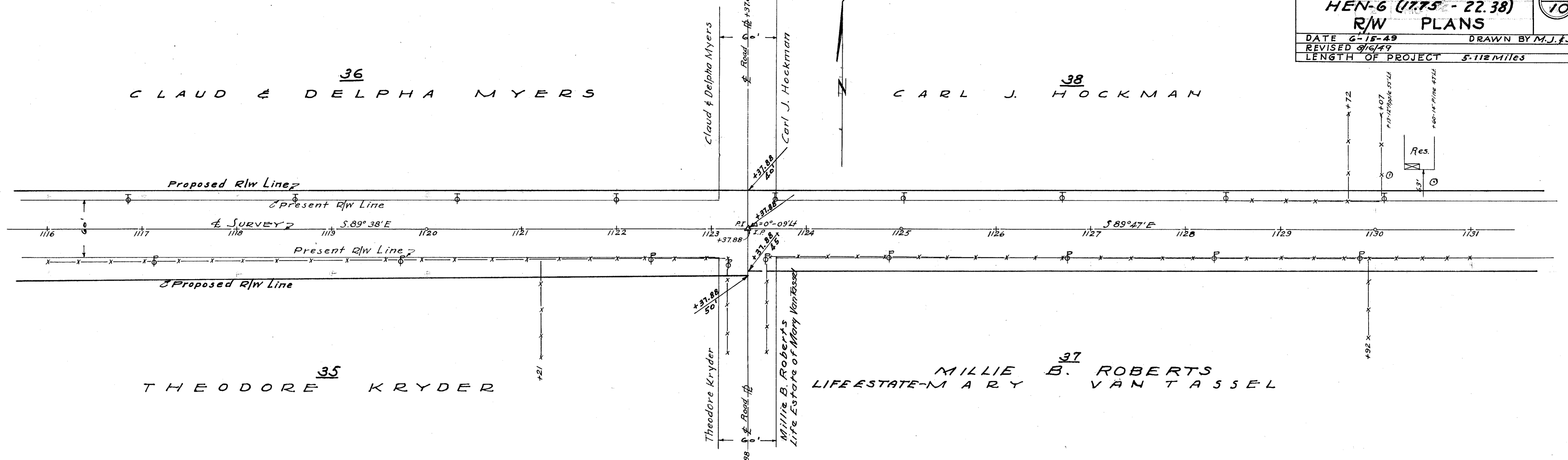
8/10

36
CLAUD & DELPHA MYERS

38
CARL J. HOCKMAN

35
THEODORE KRYDER

37
MILLIE B. ROBERTS
LIFE ESTATE - MARY VAN TASSEL

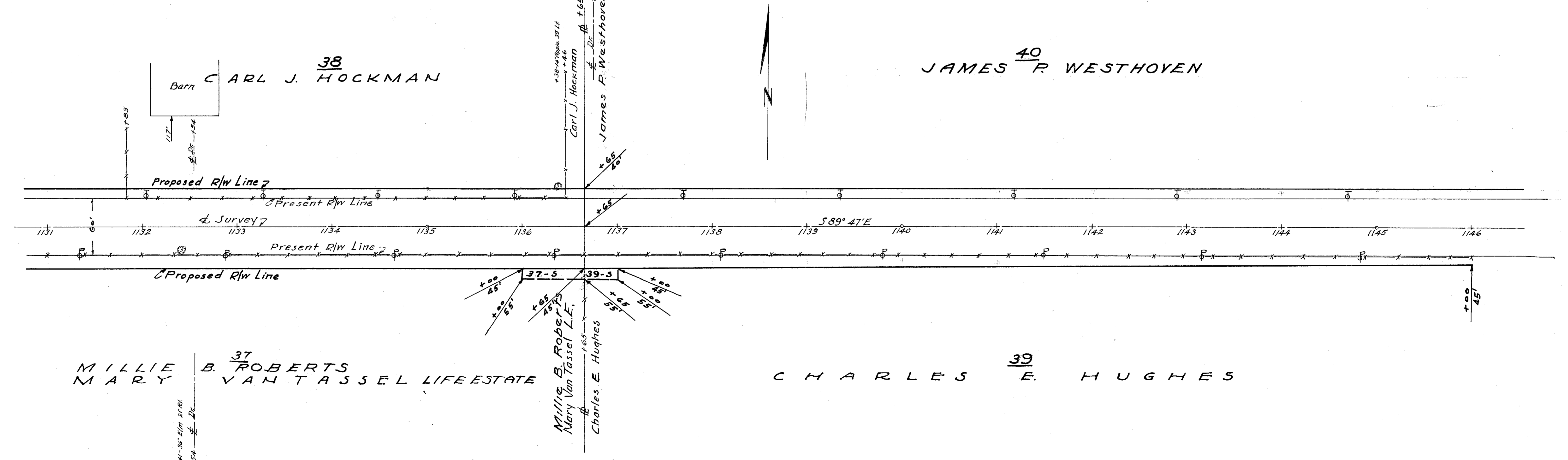


38
CARL J. HOCKMAN

40
JAMES P. WESTHOVEN

37
MILLIE B. ROBERTS
MARY VAN TASSEL LIFE ESTATE

39
CHARLES E. HUGHES



Scan 27
June 1997

HENRY COUNTY
HEN-6 (775-22.38)
R/W PLANS

DATE 6-15-49 DRAWN BY M.J.F.J.S.
REVISED 9/16/49
LENGTH OF PROJECT 5.112 Miles

SEC. 20

SEC. 21 DAMASCUS TWP T 5 N R 8 E

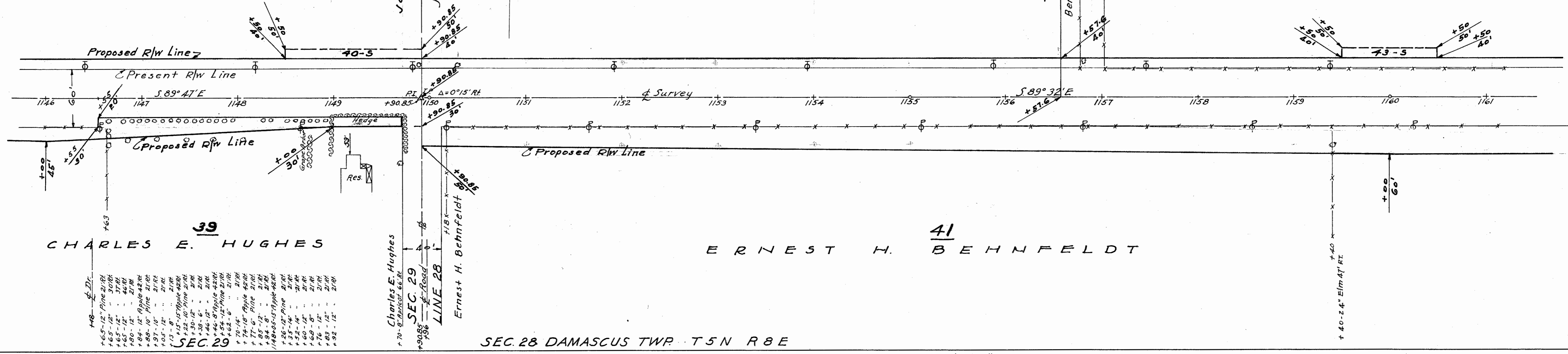
JAMES P. WESTHOVEN ⁴⁰

JENNIE SHEPARD ⁴²

BENNY D. SHEPARD ET AL ⁴³

CHARLES E. HUGHES ³⁹

ERNEST H. BEHNFELDT ⁴¹

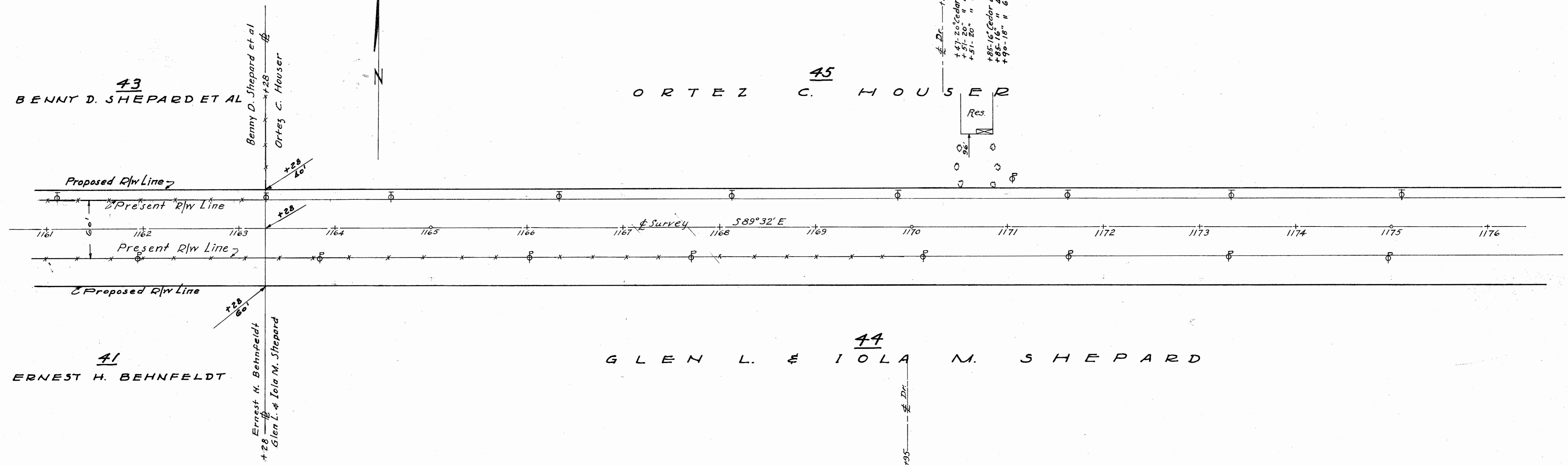


- SEC. 29
- +18-0' Pine 2 1/4"
 - +65-12" Pine 2 1/4"
 - +65-12" " 3 1/4"
 - +65-12" " 4 1/4"
 - +65-12" " 5 1/4"
 - +65-12" " 6 1/4"
 - +65-12" " 7 1/4"
 - +65-12" " 8 1/4"
 - +65-12" " 9 1/4"
 - +65-12" " 10 1/4"
 - +65-12" " 11 1/4"
 - +65-12" " 12 1/4"
 - +65-12" " 13 1/4"
 - +65-12" " 14 1/4"
 - +65-12" " 15 1/4"
 - +65-12" " 16 1/4"
 - +65-12" " 17 1/4"
 - +65-12" " 18 1/4"
 - +65-12" " 19 1/4"
 - +65-12" " 20 1/4"
 - +65-12" " 21 1/4"
 - +65-12" " 22 1/4"
 - +65-12" " 23 1/4"
 - +65-12" " 24 1/4"
 - +65-12" " 25 1/4"
 - +65-12" " 26 1/4"
 - +65-12" " 27 1/4"
 - +65-12" " 28 1/4"
 - +65-12" " 29 1/4"
 - +65-12" " 30 1/4"
 - +65-12" " 31 1/4"
 - +65-12" " 32 1/4"
 - +65-12" " 33 1/4"
 - +65-12" " 34 1/4"
 - +65-12" " 35 1/4"
 - +65-12" " 36 1/4"
 - +65-12" " 37 1/4"
 - +65-12" " 38 1/4"
 - +65-12" " 39 1/4"
 - +65-12" " 40 1/4"
 - +65-12" " 41 1/4"
 - +65-12" " 42 1/4"
 - +65-12" " 43 1/4"
 - +65-12" " 44 1/4"
 - +65-12" " 45 1/4"
 - +65-12" " 46 1/4"
 - +65-12" " 47 1/4"
 - +65-12" " 48 1/4"
 - +65-12" " 49 1/4"
 - +65-12" " 50 1/4"
 - +65-12" " 51 1/4"
 - +65-12" " 52 1/4"
 - +65-12" " 53 1/4"
 - +65-12" " 54 1/4"
 - +65-12" " 55 1/4"
 - +65-12" " 56 1/4"
 - +65-12" " 57 1/4"
 - +65-12" " 58 1/4"
 - +65-12" " 59 1/4"
 - +65-12" " 60 1/4"
 - +65-12" " 61 1/4"
 - +65-12" " 62 1/4"
 - +65-12" " 63 1/4"
 - +65-12" " 64 1/4"
 - +65-12" " 65 1/4"
 - +65-12" " 66 1/4"
 - +65-12" " 67 1/4"
 - +65-12" " 68 1/4"
 - +65-12" " 69 1/4"
 - +65-12" " 70 1/4"
 - +65-12" " 71 1/4"
 - +65-12" " 72 1/4"
 - +65-12" " 73 1/4"
 - +65-12" " 74 1/4"
 - +65-12" " 75 1/4"
 - +65-12" " 76 1/4"
 - +65-12" " 77 1/4"
 - +65-12" " 78 1/4"
 - +65-12" " 79 1/4"
 - +65-12" " 80 1/4"
 - +65-12" " 81 1/4"
 - +65-12" " 82 1/4"
 - +65-12" " 83 1/4"
 - +65-12" " 84 1/4"
 - +65-12" " 85 1/4"
 - +65-12" " 86 1/4"
 - +65-12" " 87 1/4"
 - +65-12" " 88 1/4"
 - +65-12" " 89 1/4"
 - +65-12" " 90 1/4"
 - +65-12" " 91 1/4"
 - +65-12" " 92 1/4"
 - +65-12" " 93 1/4"
 - +65-12" " 94 1/4"
 - +65-12" " 95 1/4"
 - +65-12" " 96 1/4"
 - +65-12" " 97 1/4"
 - +65-12" " 98 1/4"
 - +65-12" " 99 1/4"
 - +65-12" " 100 1/4"

SEC. 28 DAMASCUS TWP T 5 N R 8 E
SEC. 21 DAMASCUS TWP T 5 N R 8 E

BENNY D. SHEPARD ET AL ⁴³

ORTEZ C. HOUSER ⁴⁵



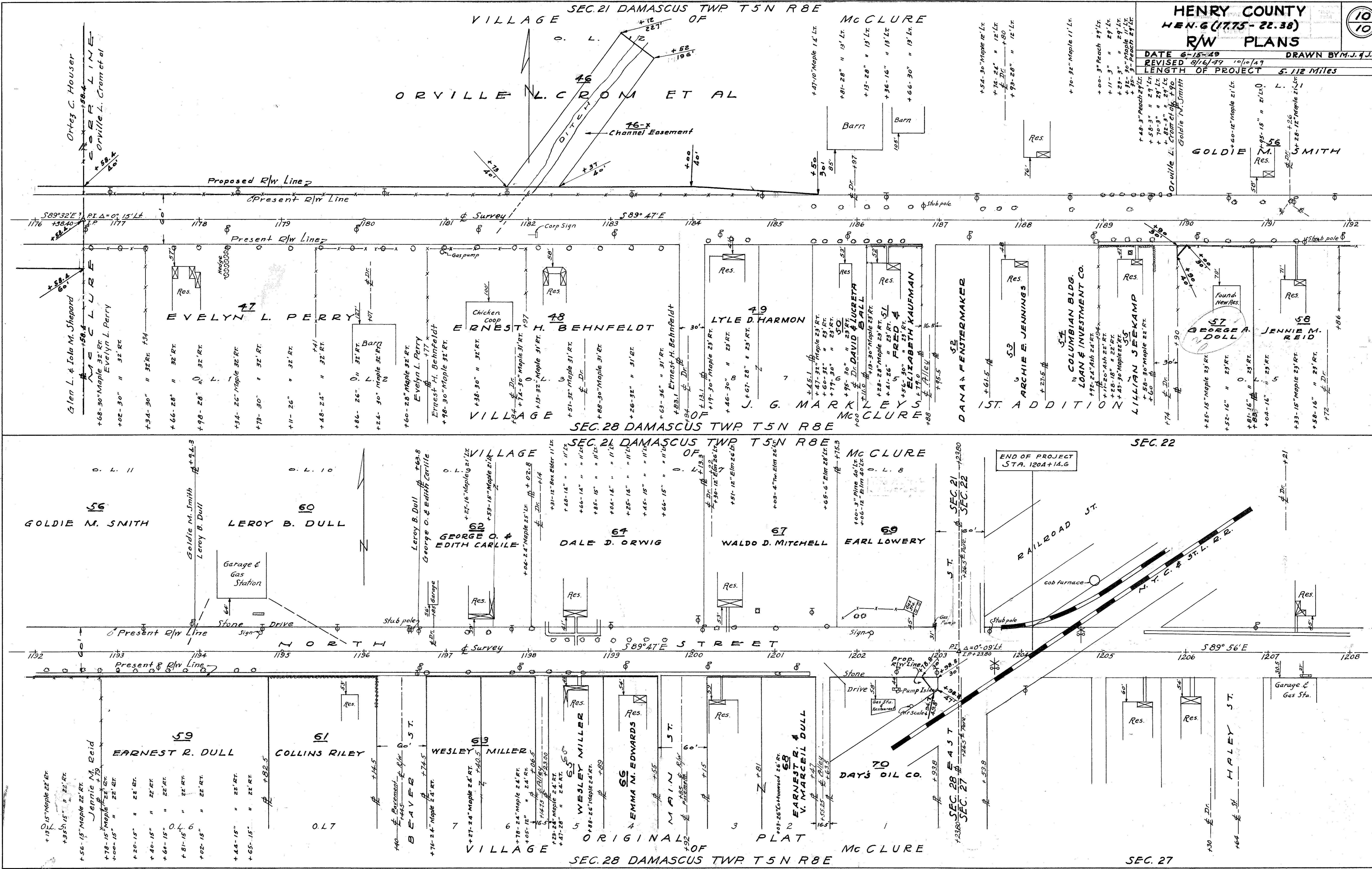
SEC. 28 DAMASCUS TWP T 5 N R 8 E

FOR ANY QUESTIONS PLEASE CONTACT ODOT DIST. 2 REAL ESTATE AT 419-353-8131

Scanned June 1997

HENRY COUNTY
HEN. G (17.75-22.38)
R/W PLANS

DATE 6-15-49
REVISED 8/16/49 10/10/49
LENGTH OF PROJECT 5.112 Miles
DRAWN BY M.J. J.J.S.



END OF PROJECT
STA. 120A+14.6

RAILROAD ST.

SEC. 22

SEC. 27

SEC. 28 DAMASCUS TWP T5N R8E

SEC. 28 DAMASCUS TWP T5N R8E

SEC. 21 DAMASCUS TWP T5N R8E

HENRY COUNTY
HEN. 6 (177522.38)
R/W PLANS

DATE: 6-15-49 DRAWN BY M.J. J.J.S.
 REVISED:
 LENGTH OF PROJECT 5.112 Miles

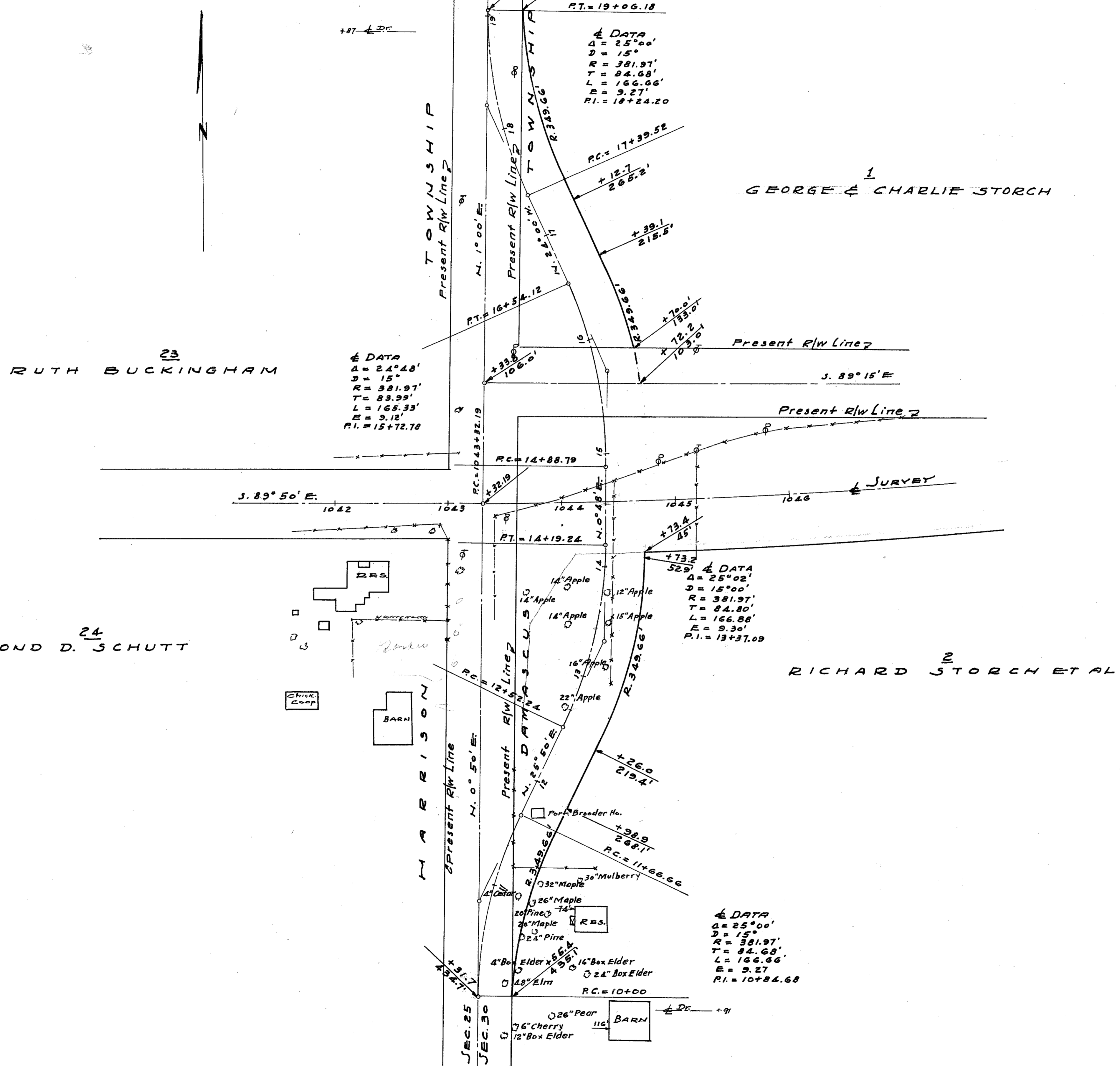


SCANNED JUN 1997

6

1

1



HENRY COUNTY DISTRICT 2 REAL ESTATE