



**PROJECT DESCRIPTION**

THE REPLACEMENT OF AN EXISTING BRIDGE STRUCTURE AND ITS APPROACHES. WORK LENGTH IS FROM STA. 40+445 TO STA. 40+710, TOTALING 265 METERS (0.265 KILOMETERS), INCLUDING MAINTENANCE OF TRAFFIC. PROJECT LENGTH IS FROM STA. 40+540 TO STA. 40+590, TOTALING 50 METERS (0.05 KILOMETERS).

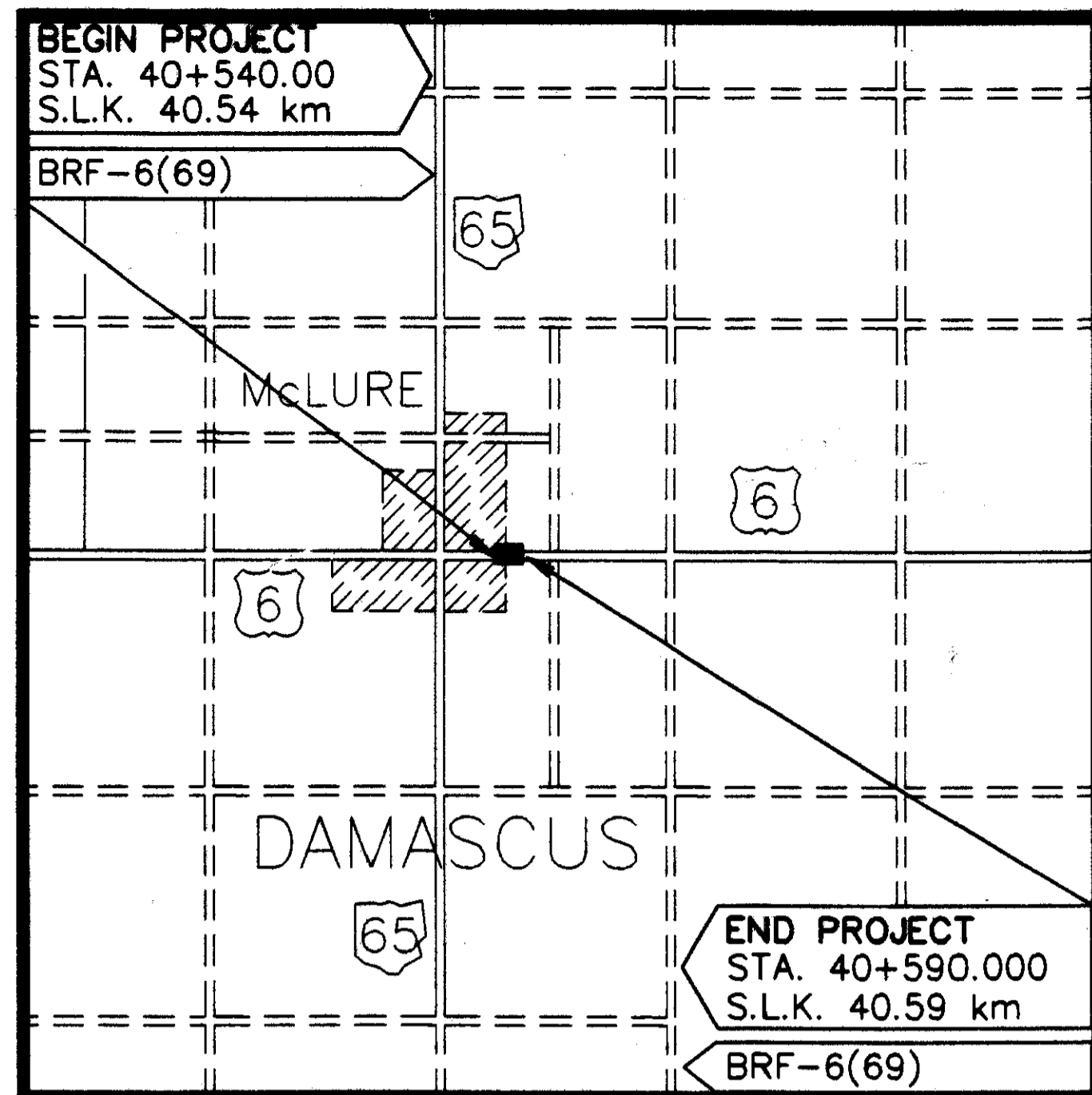
**1997 SPECIFICATIONS**

THE STANDARD SPECIFICATIONS OF THE STATE OF OHIO, DEPARTMENT OF TRANSPORTATION, INCLUDING CHANGES AND SUPPLEMENTAL SPECIFICATIONS LISTED IN THE PROPOSAL SHALL GOVERN THIS IMPROVEMENT.

STATE OF OHIO  
DEPARTMENT OF TRANSPORTATION

**HEN-6-25.21**  
**(40.54 km)**

DAMASCUS TOWNSHIP  
HENRY COUNTY

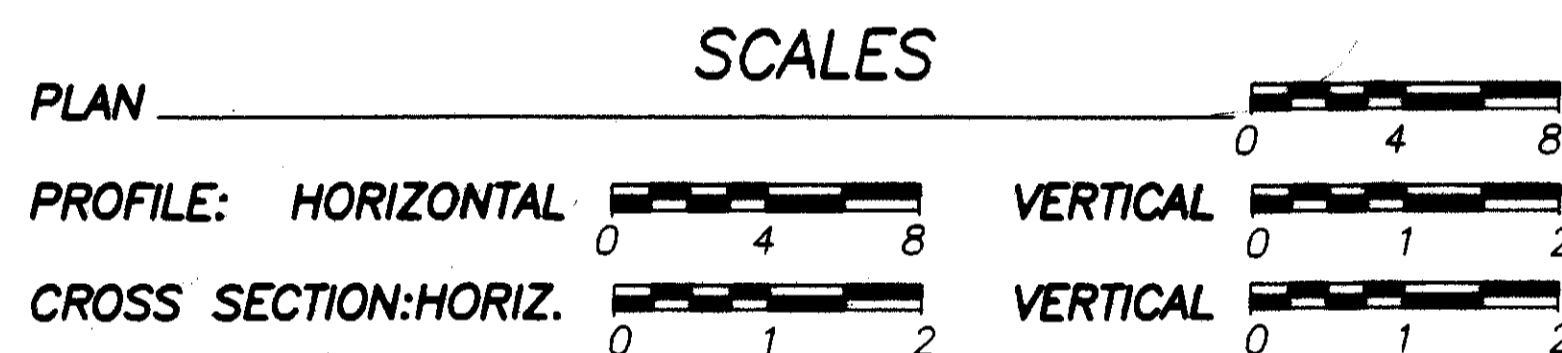


**LOCATION MAP**

SCALE IN KILOMETERS



PORTION TO BE IMPROVED \_\_\_\_\_  
STATE & FEDERAL ROUTES \_\_\_\_\_  
OTHER ROADS \_\_\_\_\_



**DESIGN DESIGNATION**

CURRENT ADT (1999) \_\_\_\_\_ 5954  
DESIGN YEAR ADT (2019) \_\_\_\_\_ 9531  
DHV \_\_\_\_\_ 953  
D \_\_\_\_\_ 50%  
T \_\_\_\_\_ 42%  
DESIGN SPEED \_\_\_\_\_ 90 KM/H  
LEGAL SPEED \_\_\_\_\_ 55 MPH  
FUNCTIONAL CLASSIFICATION \_\_\_\_\_ RURAL ARTERIAL  
DESIGN EXCEPTIONS \_\_\_\_\_ NONE

**UNDERGROUND UTILITIES**

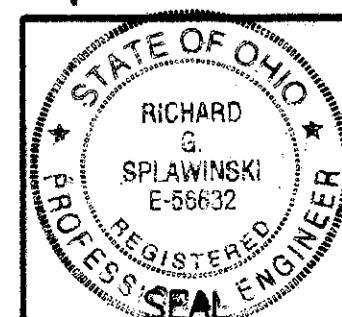
TWO WORKING DAYS  
BEFORE YOU DIG

Call...800-362-2764 (Toll free)  
OHIO UTILITIES PROTECTION SERVICE

NON-MEMBERS  
MUST BE CALLED DIRECTLY

STRUCTURE PLANS REVIEWED  
by  
URS CONSULTANTS, INC.

*Richard G. Splawinski*



**M/N LTD.**  
Moody/Nolan, Ltd., Inc.  
1776 East Broad Street  
Columbus, Ohio 43203  
614/253-2623

**INDEX OF SHEETS**

TITLE SHEET	1
TYPICAL SECTIONS	2
GENERAL NOTES	3-4
MAINTENANCE OF TRAFFIC	5
GENERAL SUMMARY	6
CALCULATIONS	7
PLAN & PROFILE	8
CROSS SECTIONS	9-13
STRUCTURES, OVER 20' SPAN	14-22

I HEREBY APPROVE THESE PLANS AND DECLARE THAT THE MAKING OF THIS IMPROVEMENT WILL NOT REQUIRE THE CLOSING TO TRAFFIC OF THE HIGHWAY AND THAT PROVISIONS FOR THE MAINTENANCE AND SAFETY OF TRAFFIC WILL BE AS SET FORTH ON THE PLANS AND ESTIMATES.

APPROVED *Richard S. Martini*  
DATE 11-17-99 DISTRICT DEPUTY DIRECTOR

APPROVED *Gordon Proctor, Jr.*  
DATE 12-6-99 DIRECTOR, DEPARTMENT OF TRANSPORTATION

SPECIAL PROVISIONS	
US ARMY CORPS OF ENGINEERS NATIONWIDE	
PERMIT #3	
DATE: 10-8-99	

SUPPLEMENTAL PRINTS OF STANDARD CONSTRUCTION DRAWINGS						SUPPLEMENTAL SPECIFICATIONS					
BP-3.1M	10-28-94	GR-1.1M	11-30-94	MT-96.11M	1-30-95	AS-1-81M	10-25-94	806	9-9-97	904	5-5-98
BP-4.1M	10-28-94	GR-1.2M	1-3-96	MT-96.20M	1-30-95	TST-1-99		814	6-2-98	905	4-1-98
		GR-1.3M	11-30-94	MT-96.25M	1-30-95	DS-1-94M	12-15-94	842	1-6-99	906	5-5-98
		GR-2.1M	10-28-94	MT-97.10M	4-25-94	EXJ-3-82M	2-18-97	865	1-6-98	907	10-21-98
DM-1.1M	10-21-97	GR-3.1M	10-28-94	MT-99.10M	1-30-95	PCB-91M	3-20-95			908	1-6-99
DM-4.3M	10-21-97	GR-3.4M	10-21-97			PSBD-1-93M	12-19-94	877	4-13-99		
								899	10-21-98		
				RM-1.1M	4-8-97						
		MC-9A	5-6-91	RM-4.2M	10-21-97						

DEPARTMENT OF TRANSPORTATION  
FEDERAL HIGHWAY ADMINISTRATION

APPROVED: \_\_\_\_\_  
DIVISION ADMINISTRATOR

DATE \_\_\_\_\_

FEDERAL PROJECT NO. TE 21-6000 (138)

PID NO. 12029

CONSTRUCTION PROJECT NO.

TITLE SHEET

HEN-6-25.21 (40.54km)

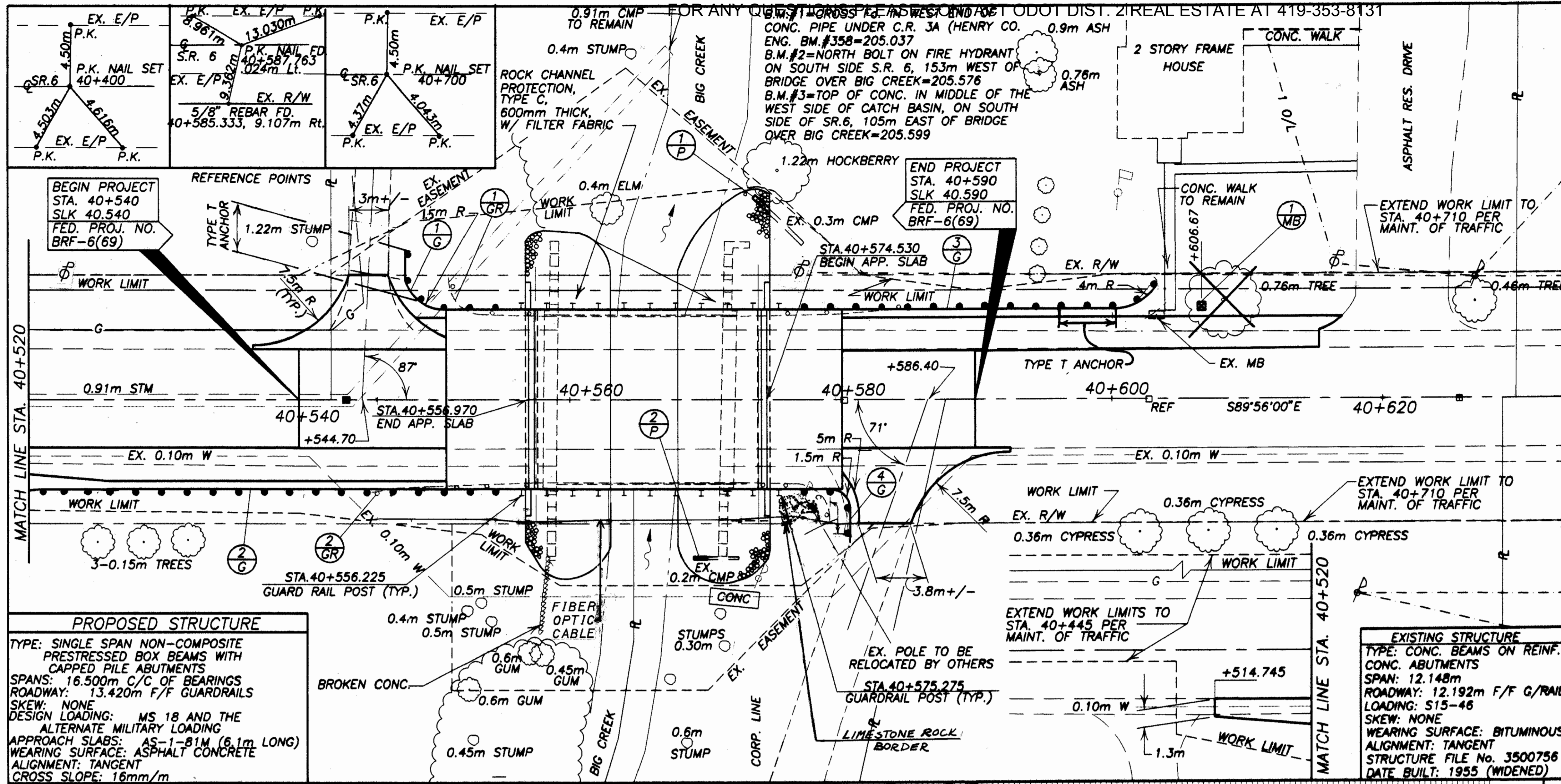
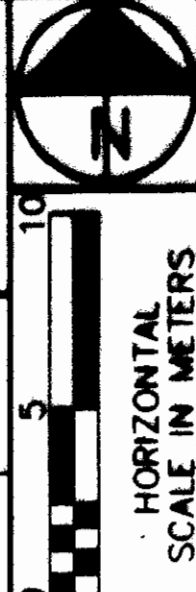
1/22

HEEN USR 6-25-21  
000107  
DIST 02

PID# 12029  
03-08-00

MMTITLE.DWG PLOT 20-1 11-4-94





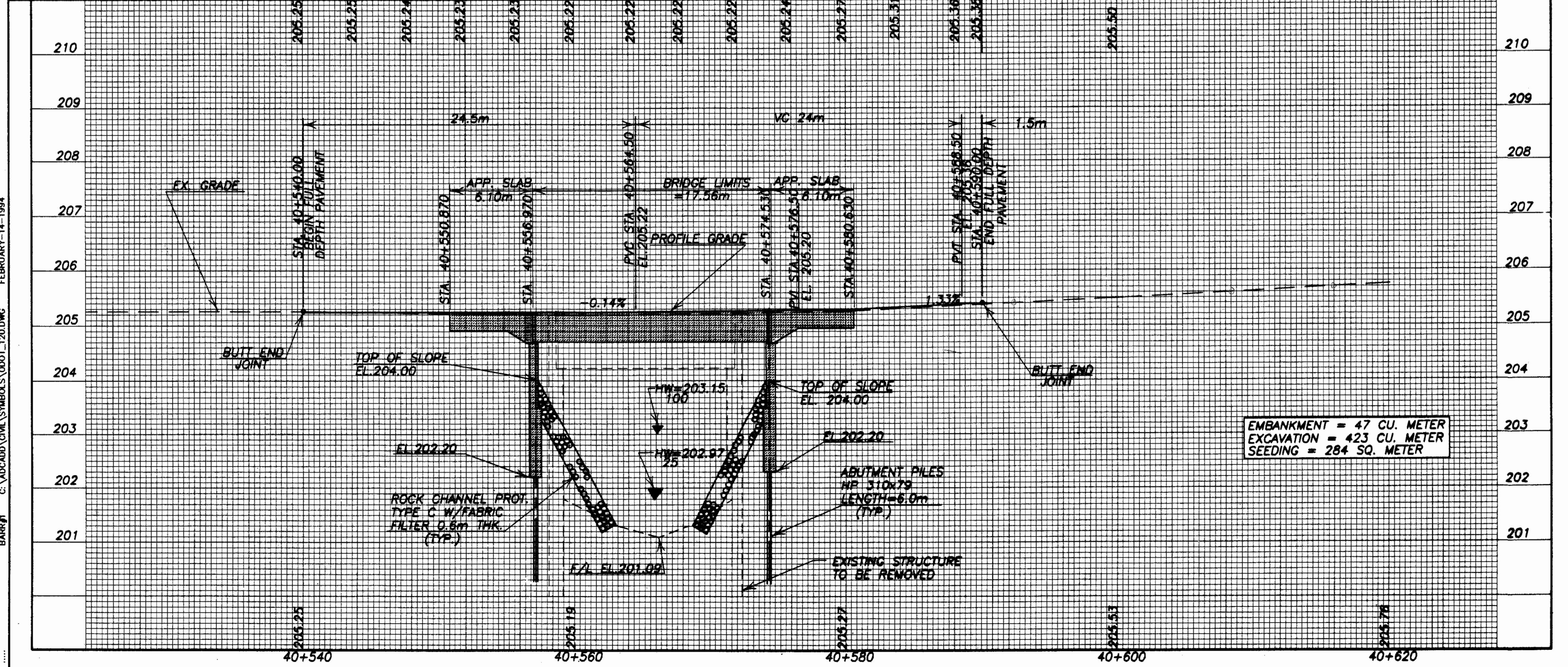
**PROPOSED STRUCTURE**

TYPE: SINGLE SPAN NON-COMPOSITE PRESTRESSED BOX BEAMS WITH CAPPED PILE ABUTMENTS

SPANS: 16.500m C/C OF BEARINGS  
ROADWAY: 13.420m F/F GUARDRAILS

SKEW: NONE  
DESIGN LOADING: MS 18 AND THE ALTERNATE MILITARY LOADING

APPROACH SLABS: AS-1-B1M (6.1m LONG)  
WEARING SURFACE: ASPHALT CONCRETE  
ALIGNMENT: TANGENT  
CROSS SLOPE: 16mm/m



ESTIMATED QUANTITIES

REF. NO.	STATION TO STATION	SIDE	QUANTITY	UNIT
1-G	STA 40+547.8 to 40+556.225	LT.	1	MAILBOX SUPPORT SYSTEM SINGLE EACH
2-G	STA 40+525.745 to 40+556.225	RT.	1	MAILBOX SUPPORT SYSTEM SINGLE EACH
3-G	STA 40+575.275 to 40+603.3	LT.	1	MAILBOX SUPPORT SYSTEM SINGLE EACH
4-G	STA 40+575.275 to 40+580.5	RT.	1	MAILBOX SUPPORT SYSTEM SINGLE EACH
1-GR	STA 40+551 to 40+585	LT.	1	MAILBOX SUPPORT SYSTEM SINGLE EACH
2-GR	STA 40+545 to 40+579	RT.	1	MAILBOX SUPPORT SYSTEM SINGLE EACH
1-MB	STA 40+606.67	LT.	1	MAILBOX SUPPORT SYSTEM SINGLE EACH
1-P	STA 40+573.48	LT.	1	MAILBOX SUPPORT SYSTEM SINGLE EACH
2-P	STA 40+568.75	RT.	1	MAILBOX SUPPORT SYSTEM SINGLE EACH
TOTALS			72.390	

PLAN AND PROFILE  
STA. 40+510 to STA. 40+630

HEN-6-25.21 (40.54km)

PLOT SCALE: 1"=40.000' CIVIL SYMBOLS:0001\_120.DWG FEBRUARY-14-1994