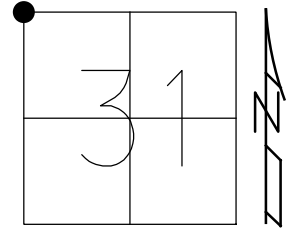


O.D.O.T. DISTRICT 2 SURVEY OFFICE (USE ONLY)

PERSONNEL _____ REFERENCE NO. 1 SHEET 9 OF 9
 NOTES O'DONNELL DATE 2/14/18 ROUTE US 6
 H.C. _____ WEATHER FAIR COUNTY HENRY
 R.C. _____ TEMP. 33° TOWNSHIP RIDGEVILLE
 DWG BY RHOADES PID 95792 SECTION 31
 T 6 N R 5 E

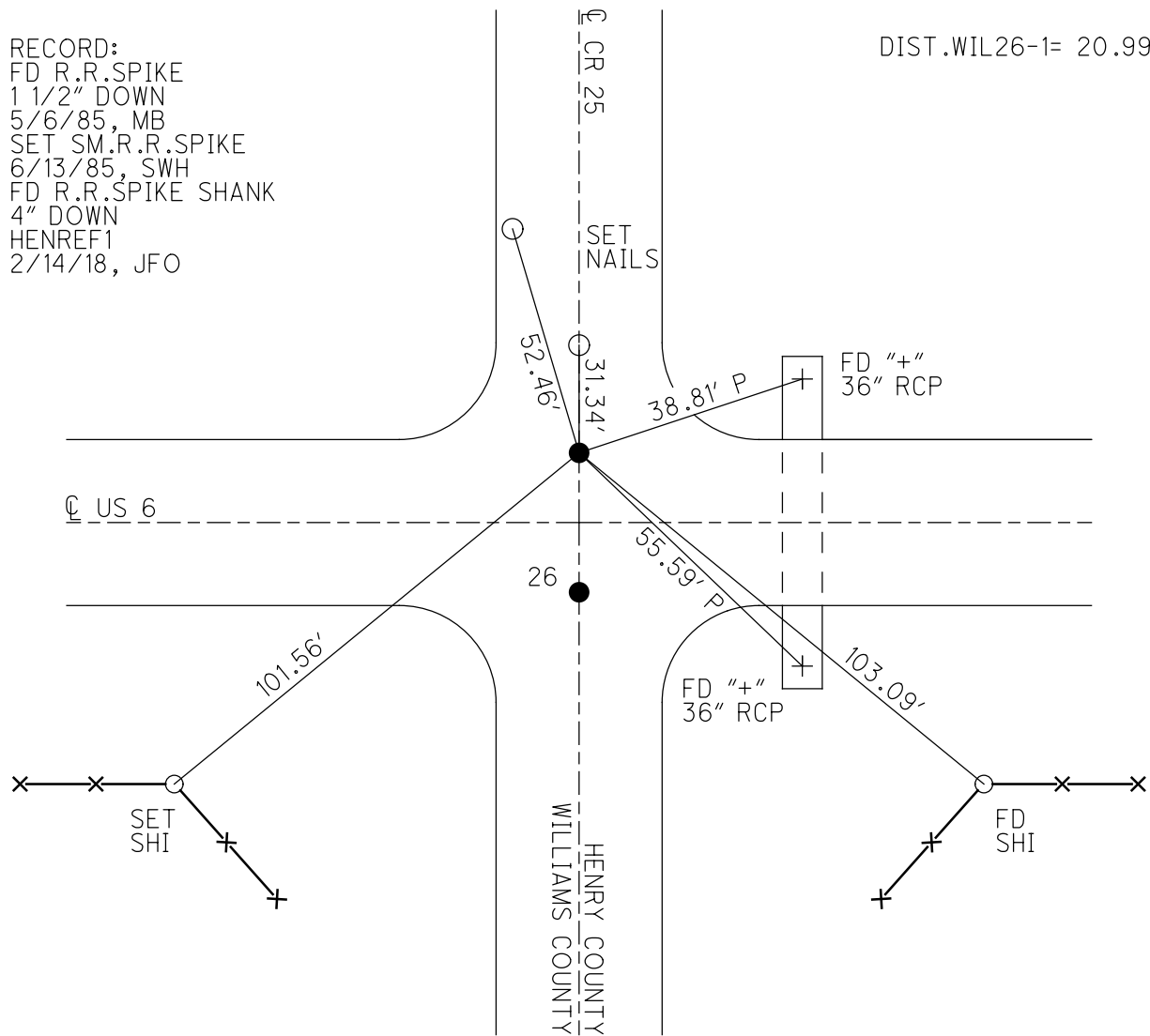
TYPE MONUMENT R.R.SPIKE SHANK
~~ON SURFACE~~ - BELOW 4"
 OFFSET \odot PAVEMENT 10.5' ~~LT~~ : RT
- TO - EDGE PAVEMENT
 STATION: 0+00



HORZ. DATUM: NAD83 2011 GEOID: NAVD88 2012A
 GRID: NORTHING: 652191.163 EASTING: 1463572.794

RECORD:
 FD R.R.SPIKE
 1 1/2" DOWN
 5/6/85, MB
 SET SM.R.R.SPIKE
 6/13/85, SWH
 FD R.R.SPIKE SHANK
 4" DOWN
 HENREF1
 2/14/18, JFO

DIST. WIL26-1= 20.99'



O.D.O.T. DISTRICT 2 SURVEY OFFICE

PERSONNEL

REFERENCE NO. 1

SHEET 1 OF 7

NOTES COZDES

H.C. LOEHRKE

DATE 4-14-97

ROUTE 6

R.C. MOSER

WEATHER SUN

COUNTY HENRY

9 HUSS

TEMP. +4°C

TOWNSHIP RIDGEVILLE

SECTION 30

T. 6 N. R. 5 E.

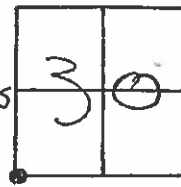
TYPE MONUMENTS sm. RR SPIKES

~~sm. RR SPIKES~~ - BELOW 1"

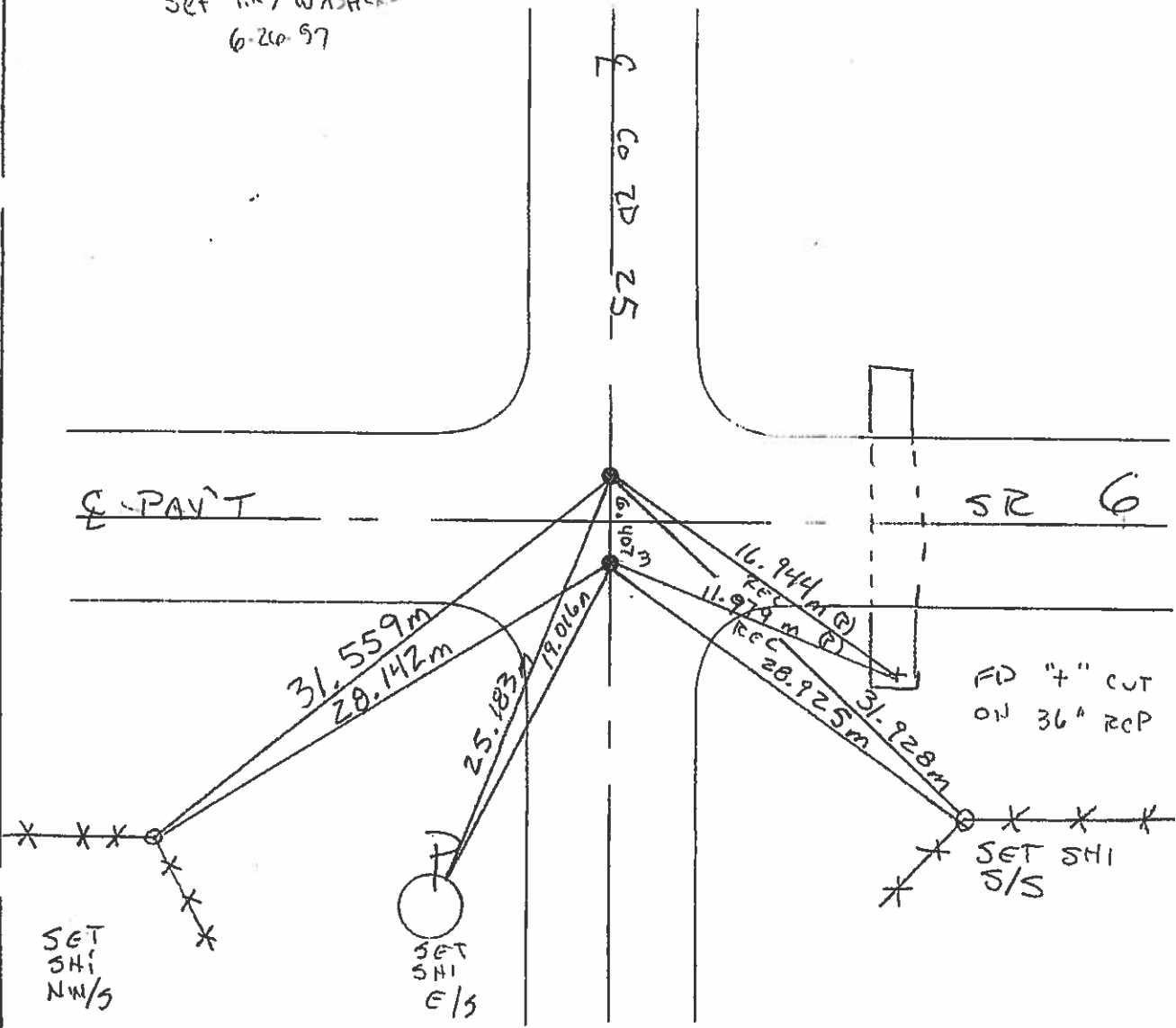
LEFT - ~~sm. RR SPIKES~~ - RIGHT 3.2m ET, 3.2m LT, BOTH POINTS ON E OF CO. RD

— TO — EDGE PAVEMENT

S.L.M. 0+000



Set P.K. / WASHERS
6-20-97



O.D.O.T. DISTRICT 2 SURVEY OFFICE

PERSONNEL _____

REFERENCE NO. 1

SHEET _____ OF _____

NOTES Hoffman R.C.

H.C. BARNHISEL

R.C. _____

DATE 5-6-85

WEATHER Cloudy

TEMP. 65°

ROUTE US 6

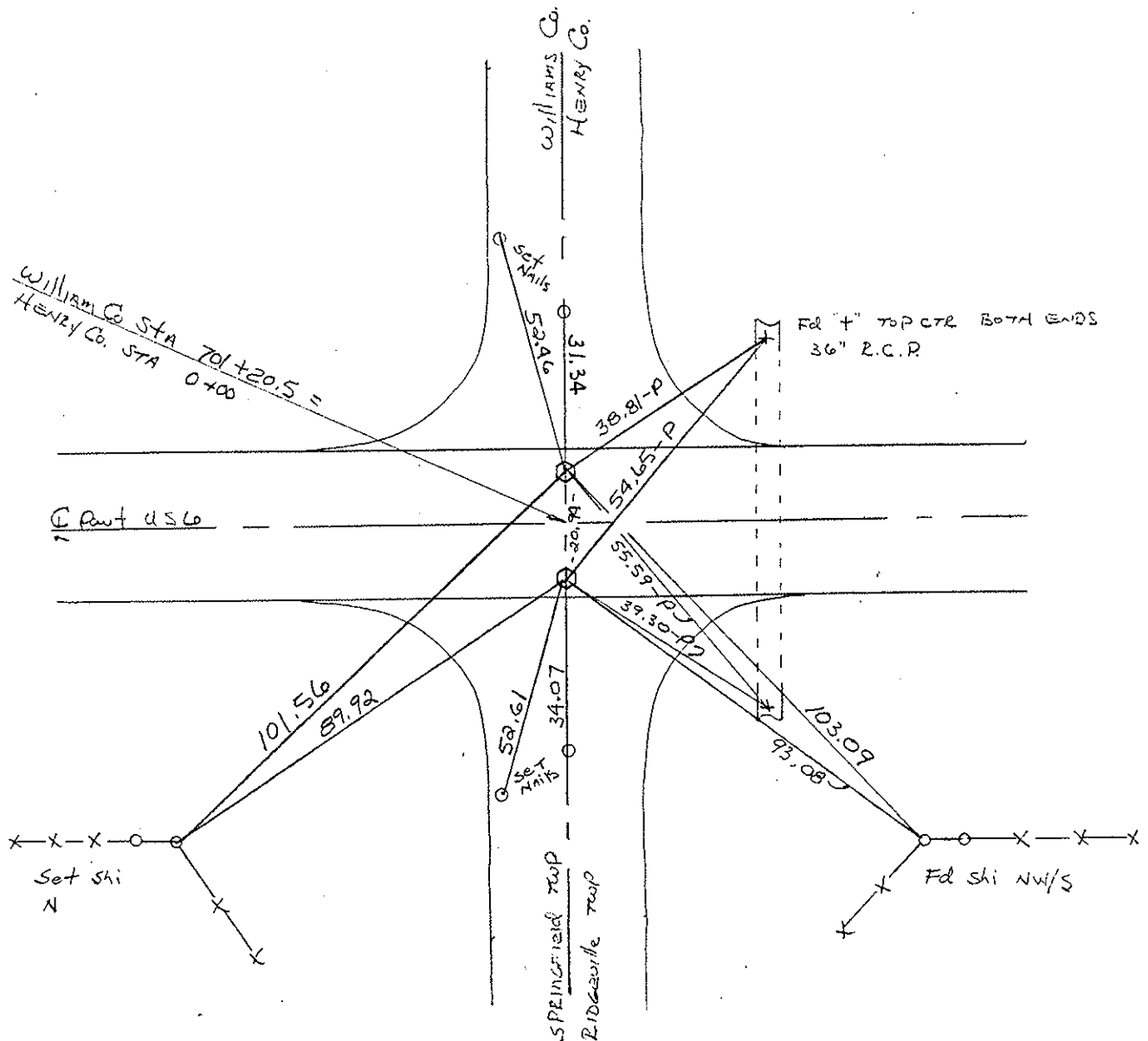
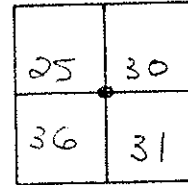
COUNTY HENRY

TOWNSHIP RIDGEVILLE

SECTION 30

T6 N R 5 E

TYPE MONUMENT R.R. SPIKES SET SMALL
 ON SURFACE - BELOW 1 1/2" R.R. SPIKES
 LEFT - C PART - RIGHT 10.54 F 10.5 RT 6-13-85
 TO EDGE PAVEMENT SGN
 S.L.M. 0+00

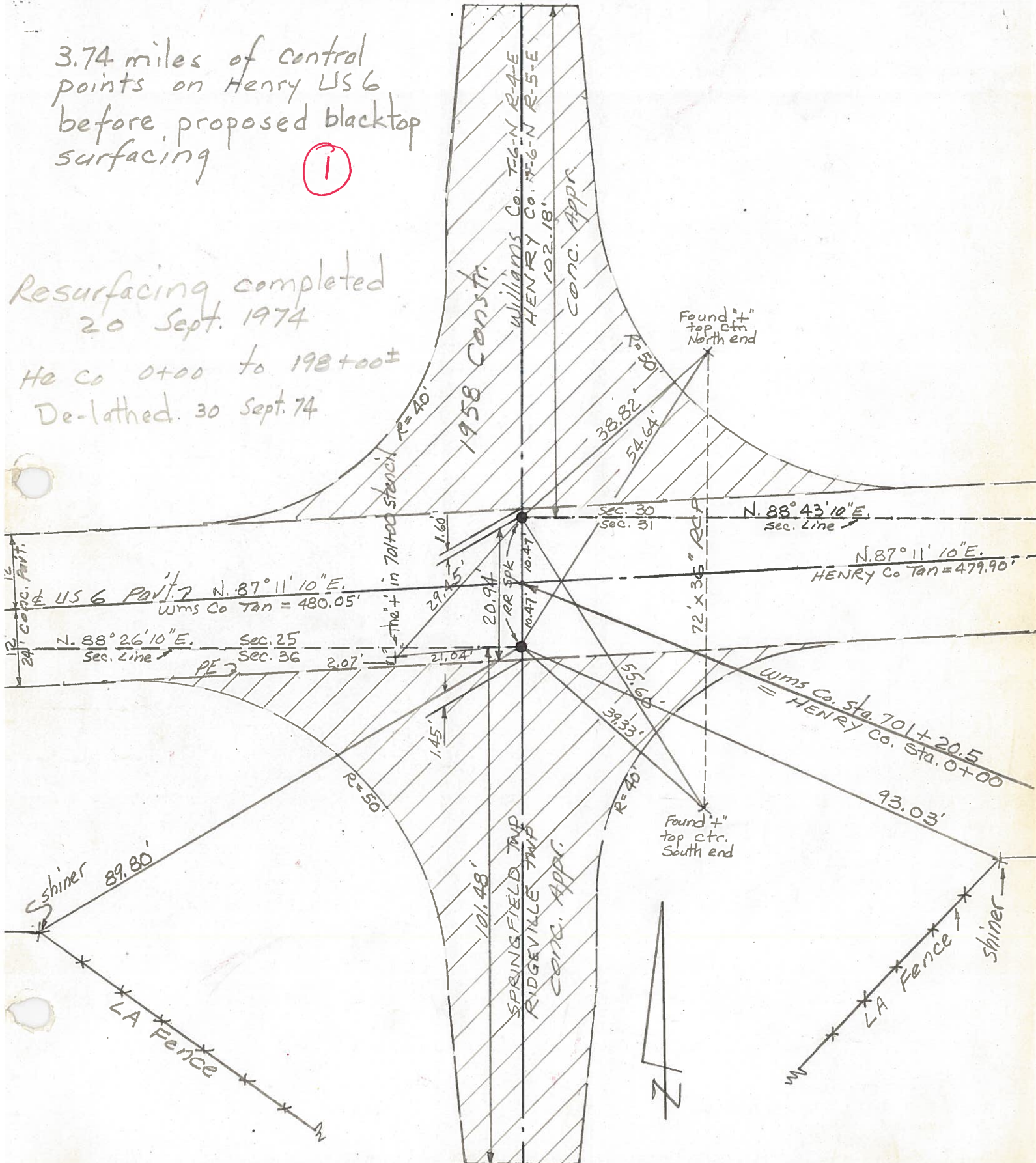


PERSONNEL	TITLE	PERSONNEL	TITLE	COUNTY	DATE	WEATHER	TEMP.
Red Beach				HENRY	5 July 1974		
W. Knappe				US 6			
D. Boyle				Ridgeville Twp.			
J. Bagdonas							

DESCRIPTION CONTROL POINTS JOB NO. _____

3.74 miles of control points on Henry US 6 before proposed blacktop surfacing
 (1)

Resurfacing completed 20 Sept. 1974
 He Co 0+00 to 198+00±
 De-lathed. 30 Sept. 74



PERSONNEL TITLE PERSONNEL TITLE

COUNTY Henry DATE Jan 1951

S. R. #384 WEATHER _____

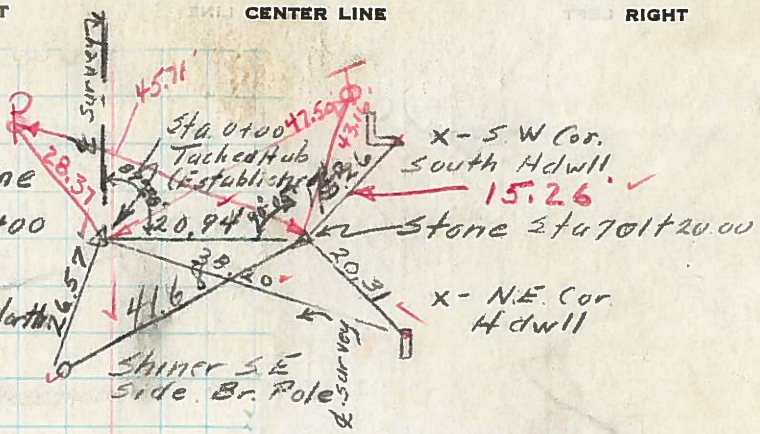
SEC. _____ TEMP. _____

DESCRIPTION _____ LEFT _____ CENTER LINE _____ RIGHT _____

10/9/56

WILLIAMS-HENRY Co Line

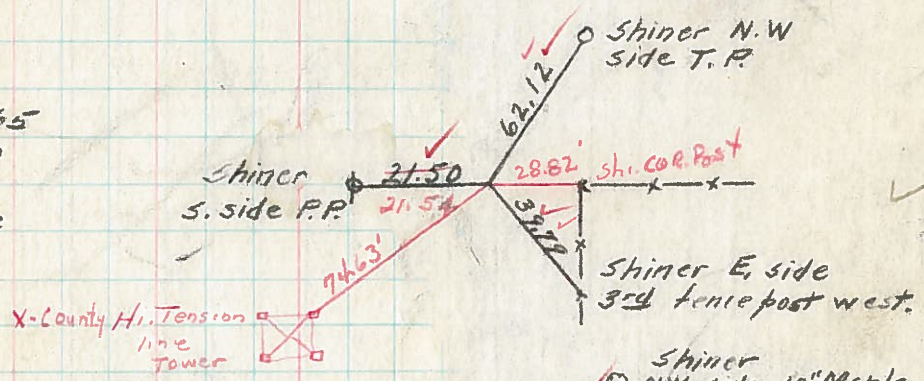
Sta 701+20.00 = Sta. 0+00
 Found Stone Sta 701+20.00
 Established Tacked Hub 20.94 North



Recorded in
 Map book
 H.C.

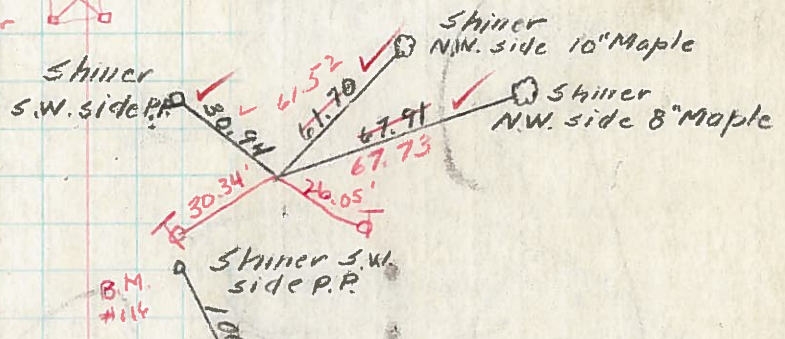
10/9/56

Sta. 19+87.65
 L = 0° 00'
 Found Stone



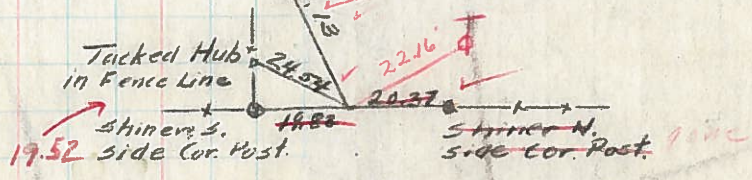
10/9/54

Sta. 46+19.55
 L = 0° 10' Lt.
 Found I.P. over Stone
 S.R. #384 & Twp. Rd #24



10/9/54

Sta. 72+63.84
 L = 0° 08' Lt.
 Found Stone
 Set R.R. Spk.



10/9/56

Sta. 99+17.62
 L = 0° 8' Rt.
 Established Tacked Hub.
 Set R.R. Spk
 S.R. #384 & S.R. #66

