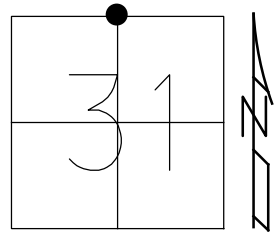


O.D.O.T. DISTRICT 2 SURVEY OFFICE (USE ONLY)

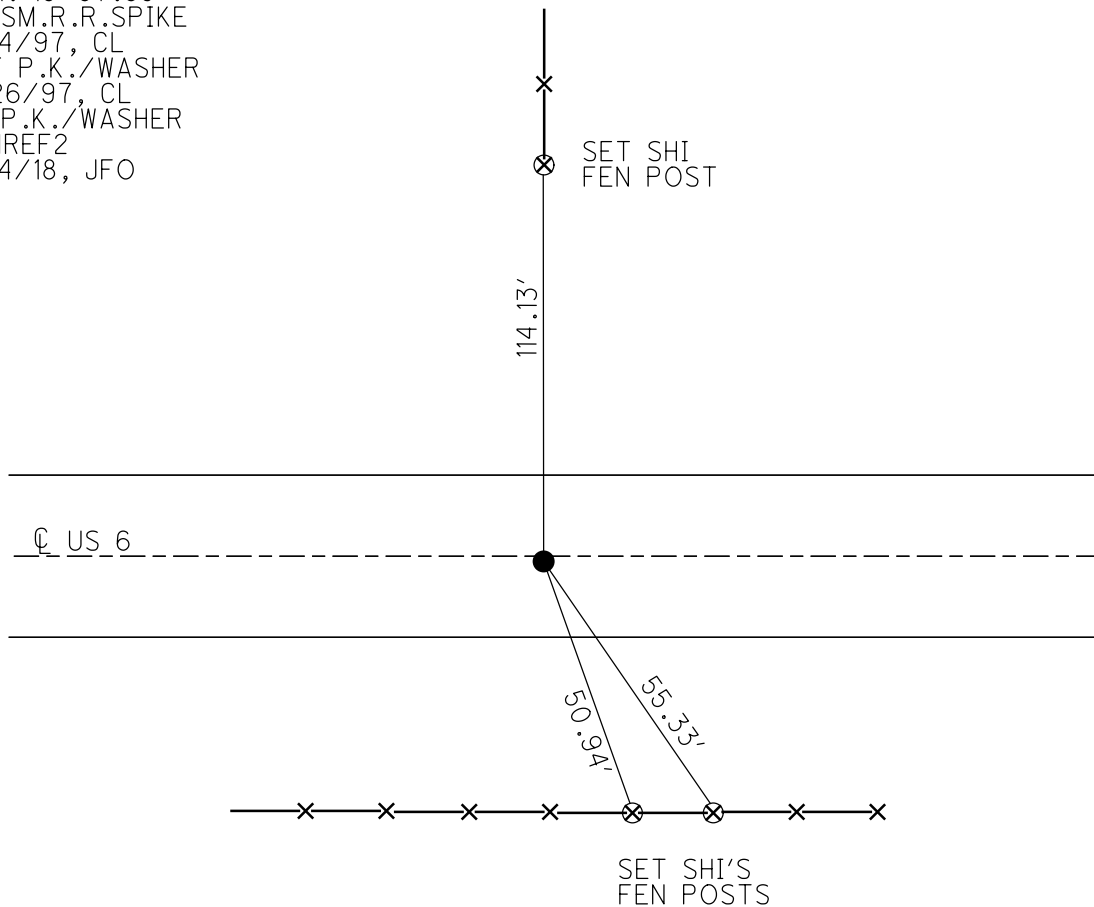
PERSONNEL _____ REFERENCE NO. 2 SHEET 9 OF 9
 NOTES O'DONNELL DATE 2/14/18 ROUTE US 6
 H.C. _____ WEATHER FAIR COUNTY HENRY
 R.C. _____ TEMP. 33° TOWNSHIP RIDGEVILLE
 DWG BY RHOADES PID 95792 SECTION 31
 T 6 N R 5 E

TYPE MONUMENT P.K./WASHER
~~ON SURFACE~~ - BELOW ON
 OFFSET C PAVEMENT ON LT : RT
12.4' TO RT EDGE PAVEMENT
 STATION: 19+87.49



HORZ. DATUM: NAD83 2011 GEOID: NAVD88 2012A
 GRID: NORTHING: 652146.153 EASTING: 1465559.773

RECORD: P.O.T.
 STA. 19+87.65
 FD SM.R.R.SPIKE
 4/14/97, CL
 SET P.K./WASHER
 6/26/97, CL
 FD P.K./WASHER
 HENREF2
 2/14/18, JFO



O.D.O.T. DISTRICT 2 SURVEY OFFICE

PERSONNEL

REFERENCE NO. 2

SHEET 2 OF 7

NOTES CORDES

H.C. LOENCKE

R.C. MOSEK

A HUSS

DATE 4-14-97

WEATHER SUN

TEMP. +9°C

ROUTE 6

COUNTY HENRY

TOWNSHIP RIDGEVILLE

SECTION 30

T. 6 N R. 5 E

Set P.K./WASHER
4-26-97

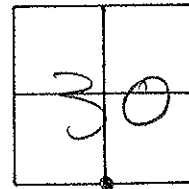
TYPE MONUMENT SM RR SPIKE

ON SURFACE - ~~NO~~ YES

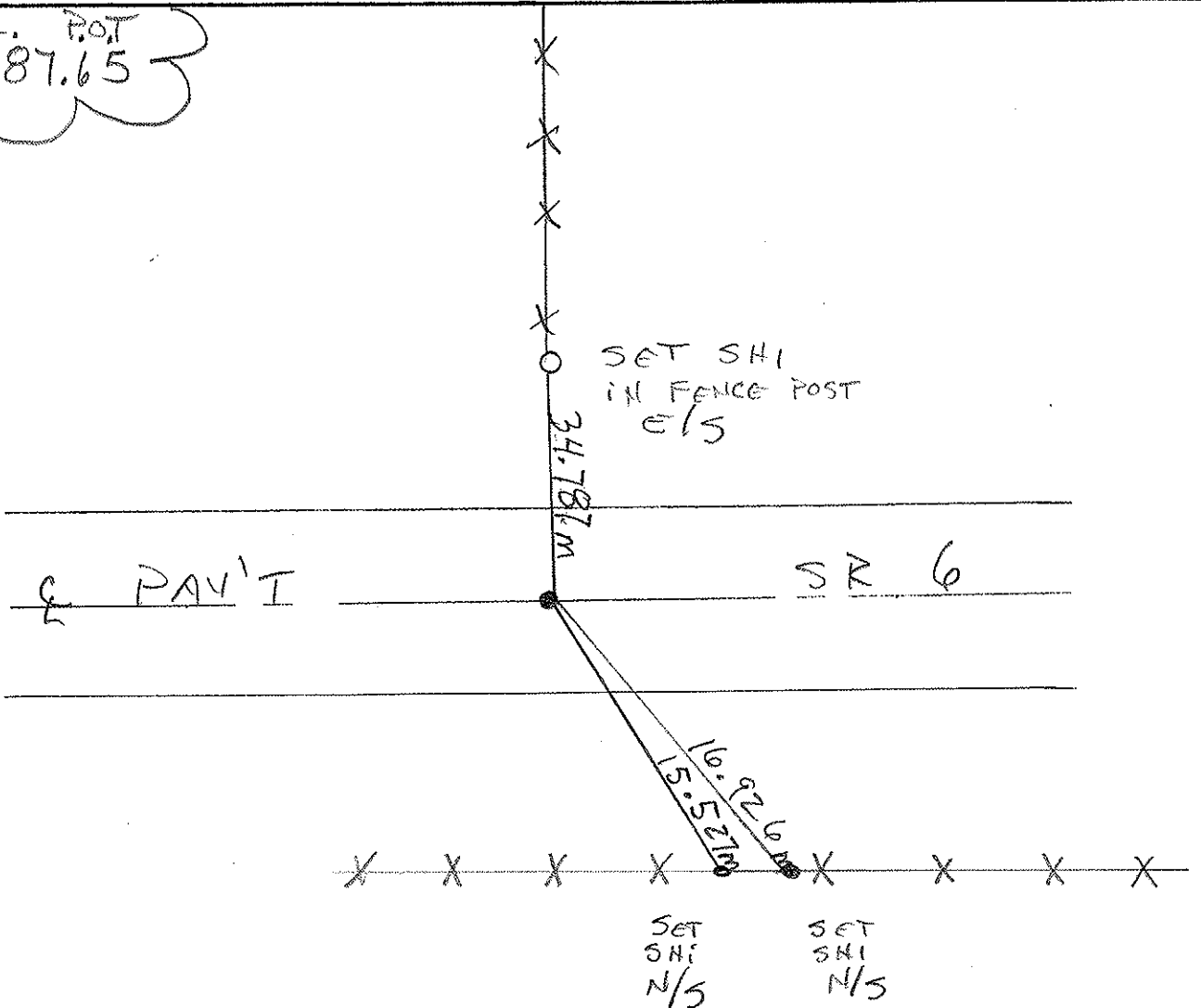
~~PAV'T.~~ PAV'T. YES

3.78m TO RT EDGE PAVEMENT

S.L.M. 0+607



REC. POT
19+87.65



O.D.O.T. DISTRICT 2 SURVEY OFFICE

PERSONNEL _____

REFERENCE NO. 2

SHEET _____ OF _____

NOTES Hoffman R.C.

H.C. BARNHISEL

R.C. _____

DATE 5-6-85

WEATHER Cloudy

TEMP. 65°

ROUTE US 6

COUNTY HENRY

TOWNSHIP RIDGEVILLE

SECTION 30

T 6 N R 5 E

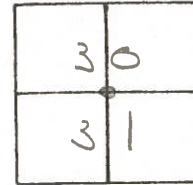
TYPE MONUMENT R.R. spike Set small R.R. spike

ON SURFACE - BELOW 2" 6-13-85 scud

LEFT- & PAV'T. - RIGHT out &

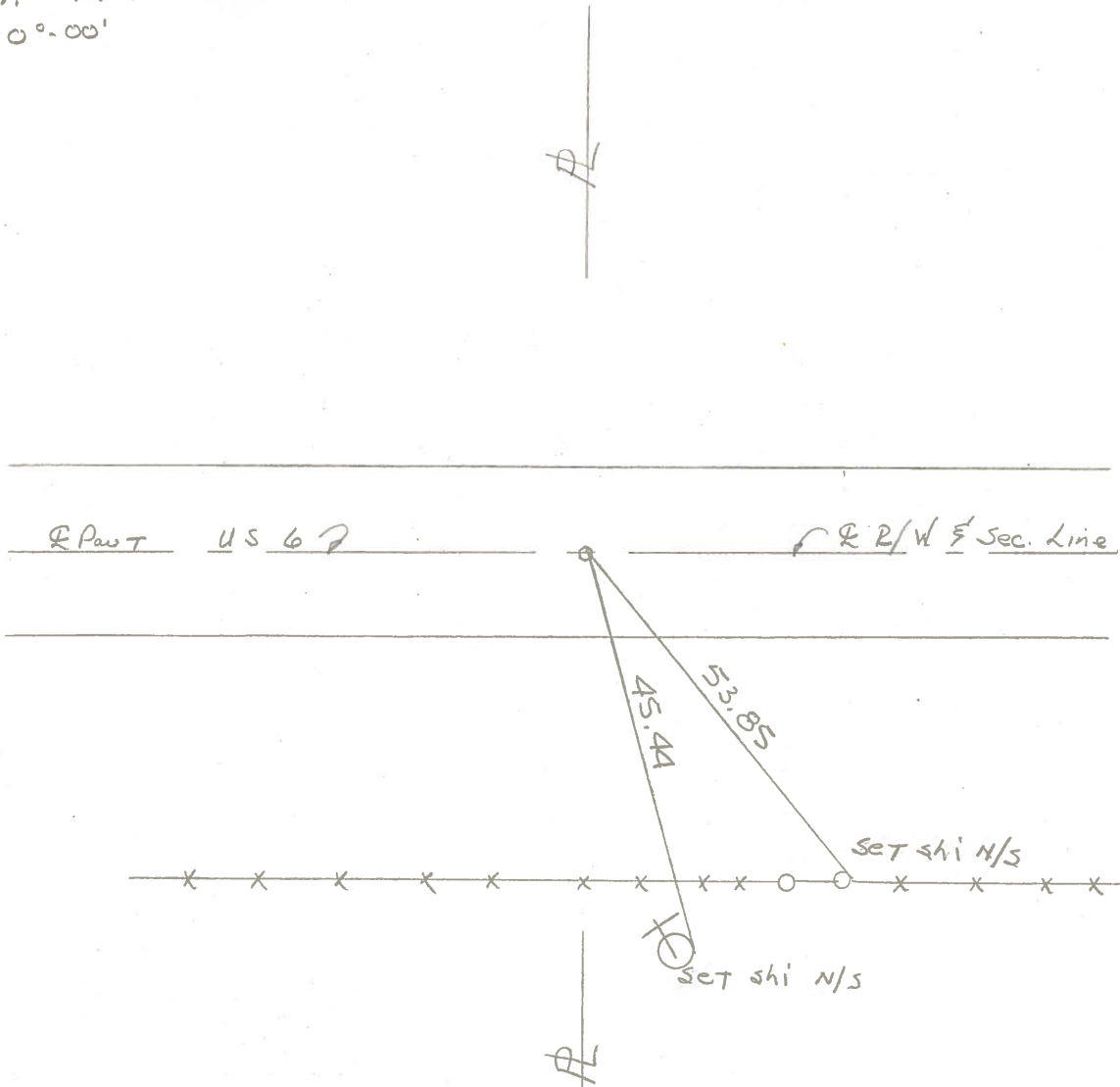
12' TO RT. EDGE PAVEMENT

S.L.M. 19788



P.O.T. 19+87.65

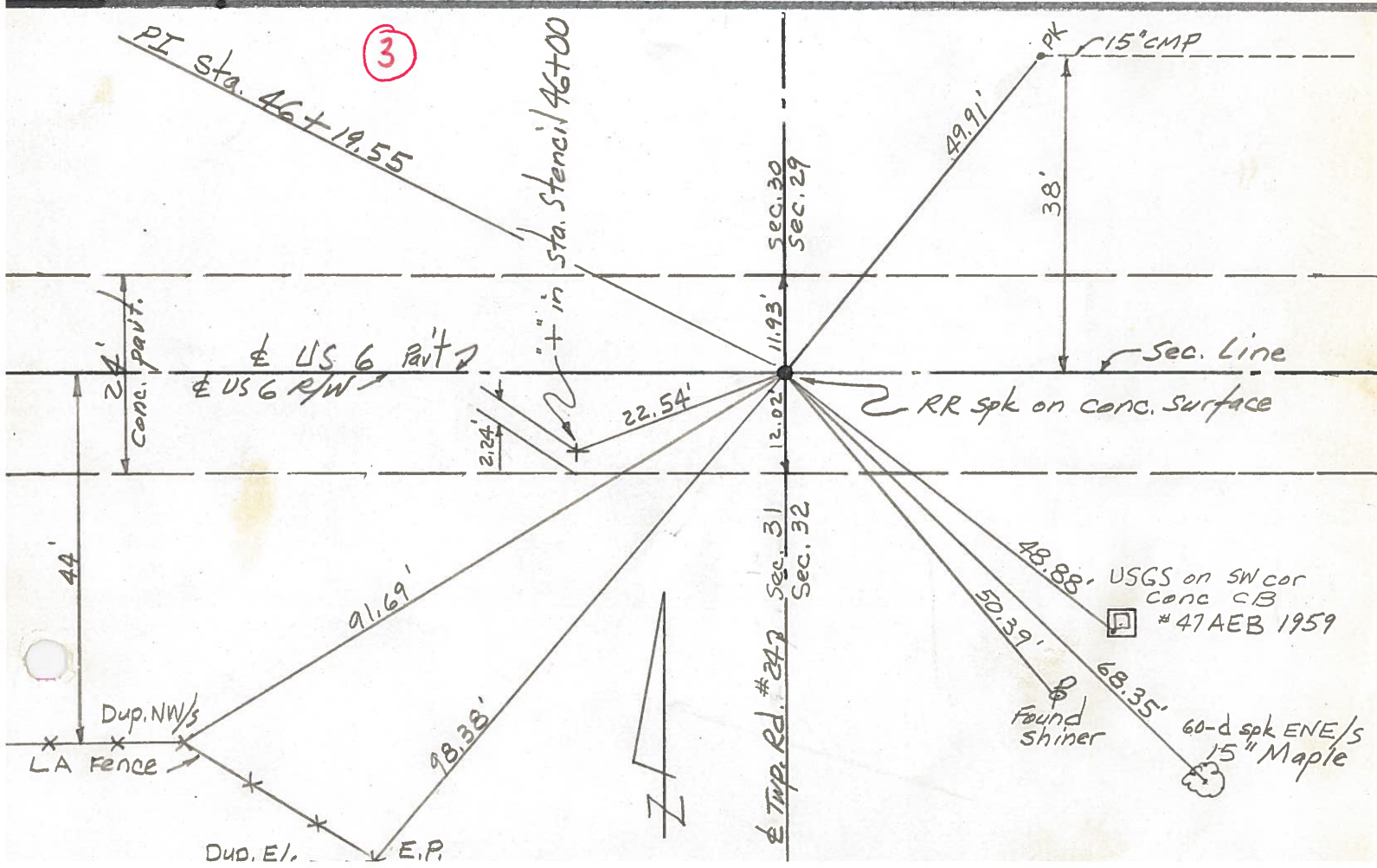
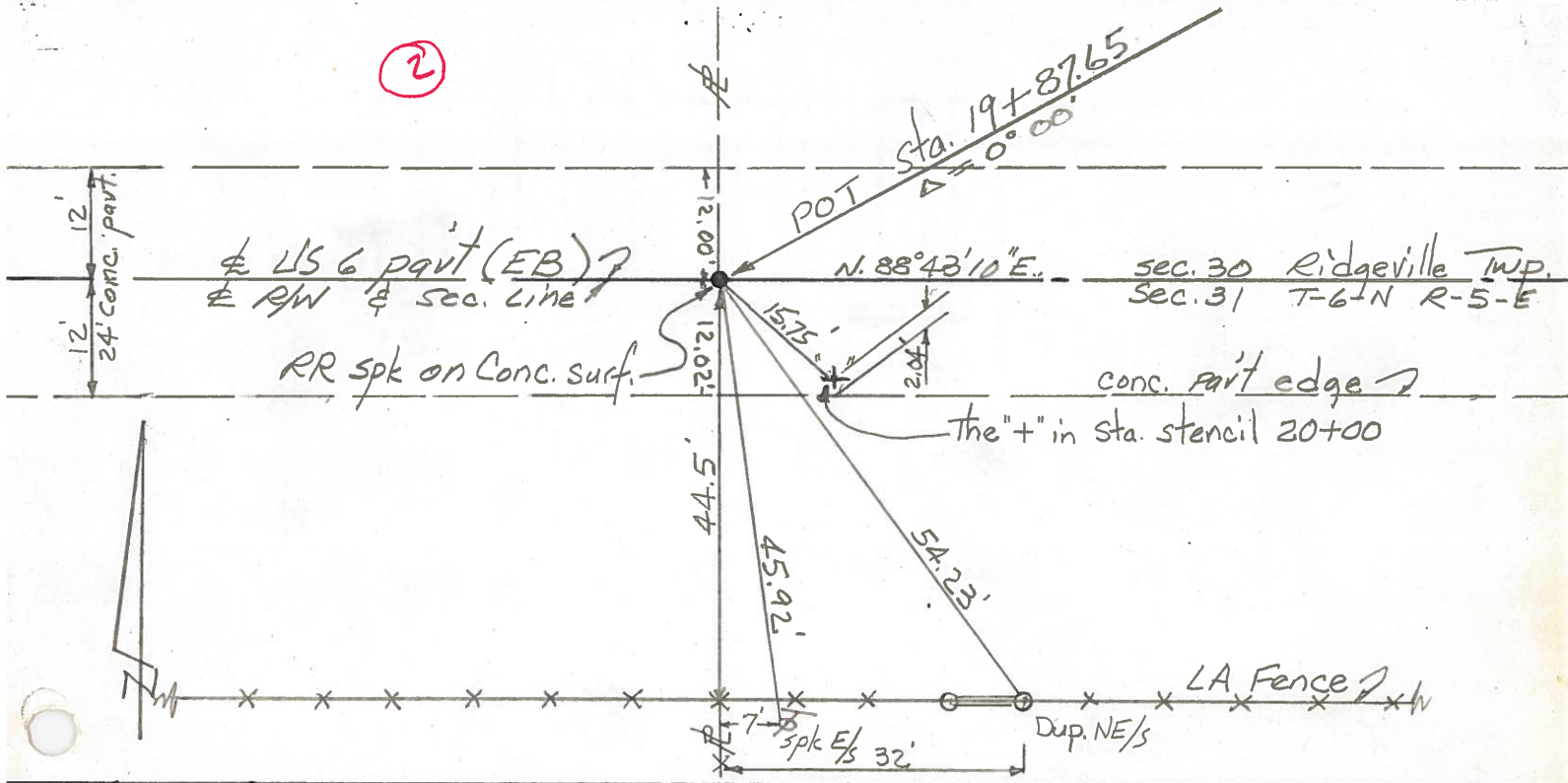
$\Delta = 0^{\circ}.00'$



PERSONNEL TITLE PERSONNEL TITLE
Red Beach
W. Knappe
D. Boyle
J. Bagdonas

COUNTY HENRY DATE 5 July 1974
 S. R. US 6 WEATHER _____
 SEC. Ridgeville Twp. TEMP. _____

DESCRIPTION CONTROL POINTS JOB NO. _____



PERSONNEL TITLE PERSONNEL TITLE

COUNTY Henry DATE Jan 1951

S. R. #384 WEATHER _____

SEC. _____ TEMP. _____

DESCRIPTION _____ JOB NO. _____

LEFT CENTER LINE RIGHT

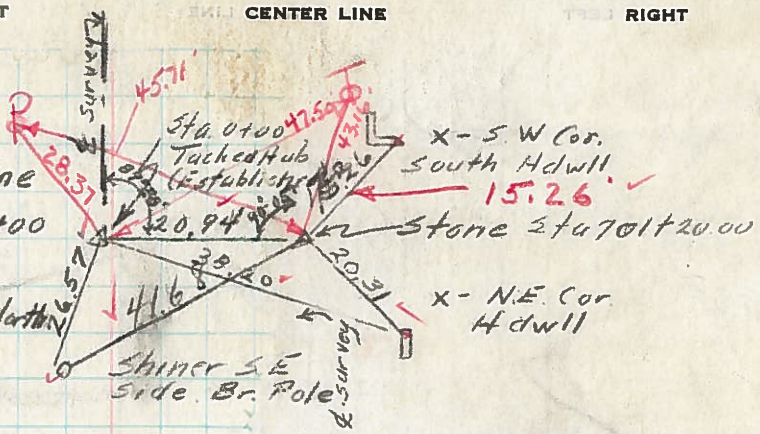
10/9/56

WILLIAMS-HENRY Co Line

Sta 70+20.00 = Sta. 0+00

Found Stone Sta 70+20.00

Established Tacked Hub 20.94 North



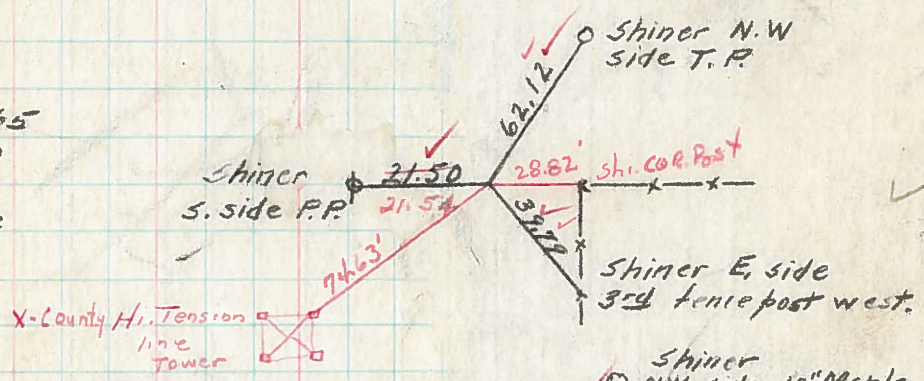
Recorded in
Map book
H.C.

10/9/56

Sta. 19+87.65

L = 0° 00'

Found Stone



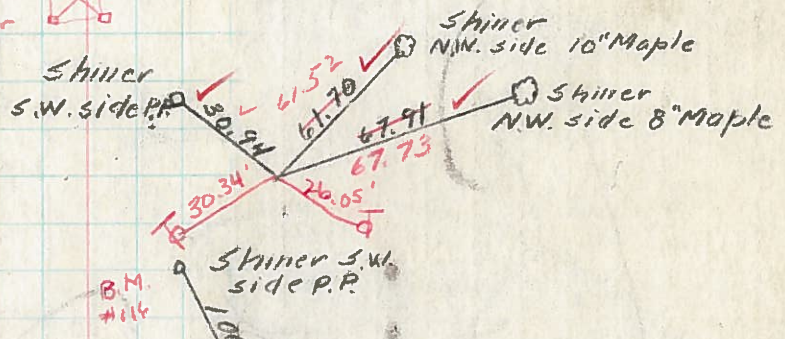
10/9/54

Sta. 46+19.55

L = 0° 10' Lt.

Found I.P. over Stone

S.R. #384 & Twp. Rd #24



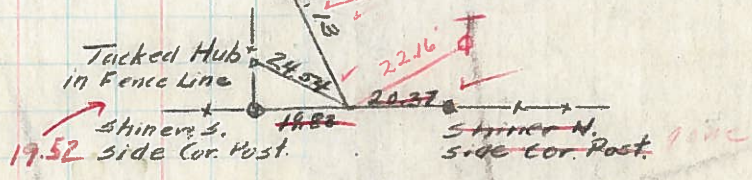
10/9/54

Sta. 72+63.84

L = 0° 08' Lt.

Found Stone

Set R.R. Spk.



10/9/56

Sta. 99+17.62

L = 0° 8' Rt.

Established Tacked Hub

Set R.R. Spk

S.R. #384 & S.R. #66

