

County HENRY S.R. 66

Date 7-6-84

Township RIDGEBVILLE

Weather P. CLEAR

Section _____

Temp. 70°

T6N, R5E

Personnel Loftman

Ref # 5 vs 6 LOEMRE H.C.

29	28
32	33



1

HOUSEHOLDER R.C.

Fd R.R. SPK 1 1/2" below surface on E part SR 66 north

SLM = 151+70

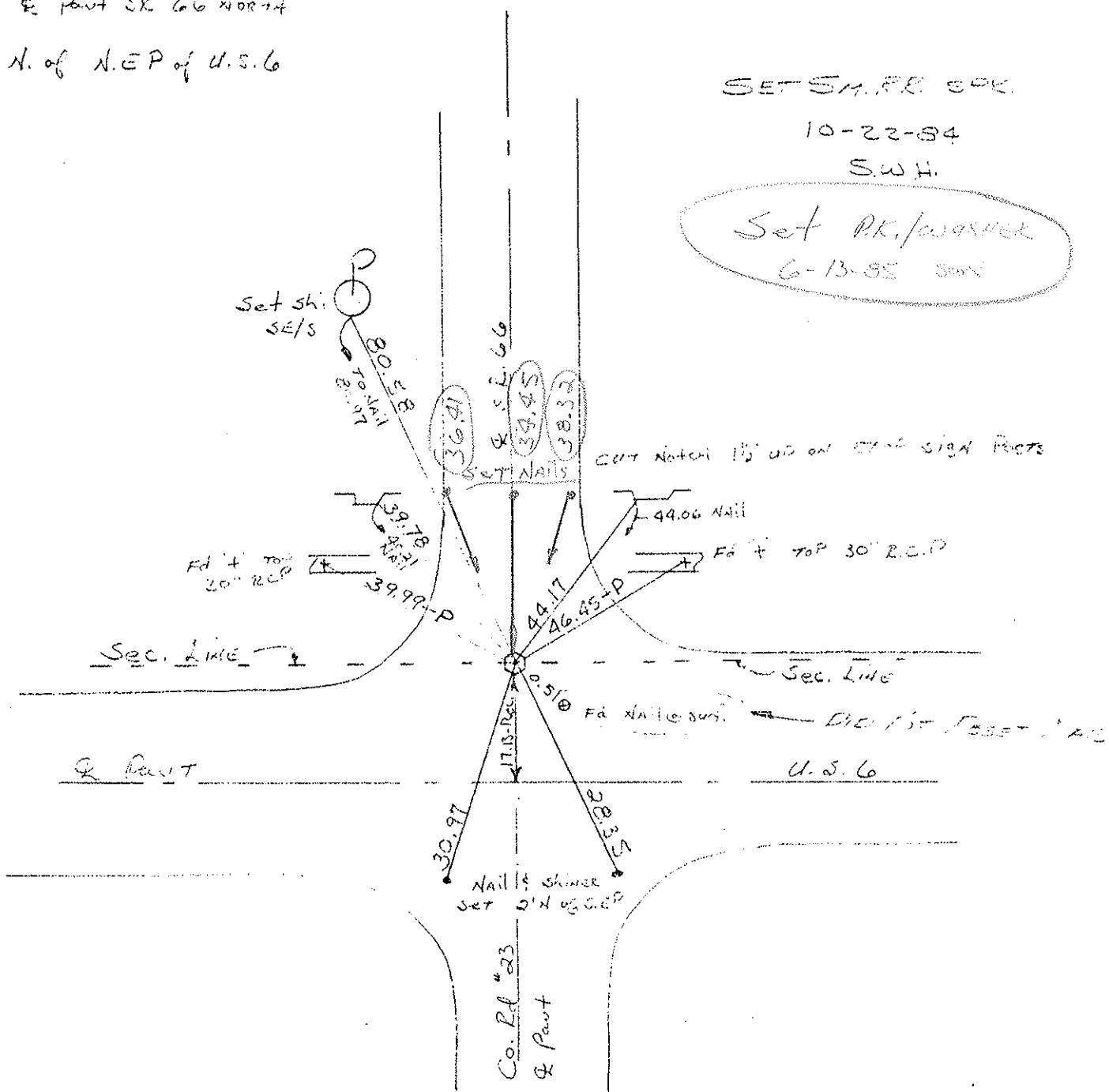
5.2' N. of N.E.P. of U.S. 6

SET SM. RR SPK

10-22-84

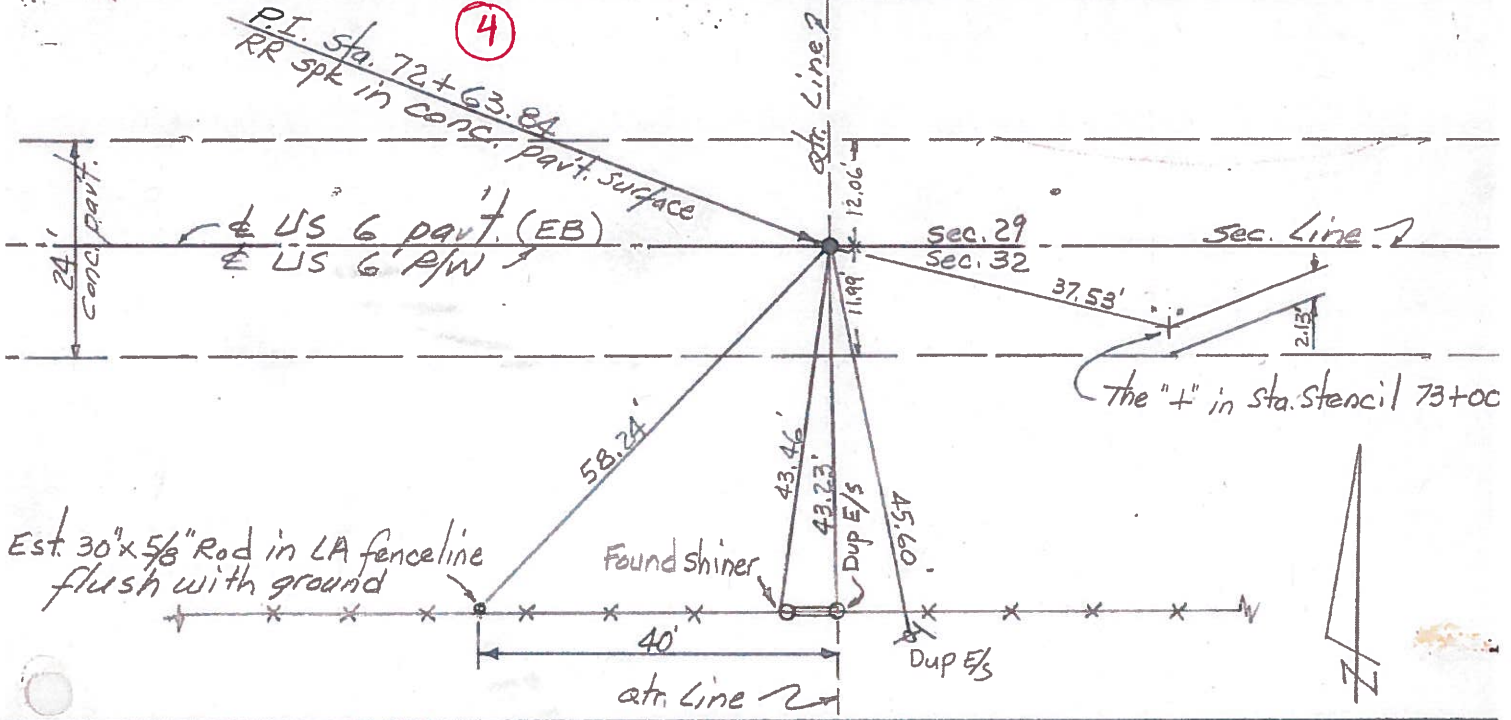
S.W.H.

Set PK. / WASH. 6-13-85 SWH

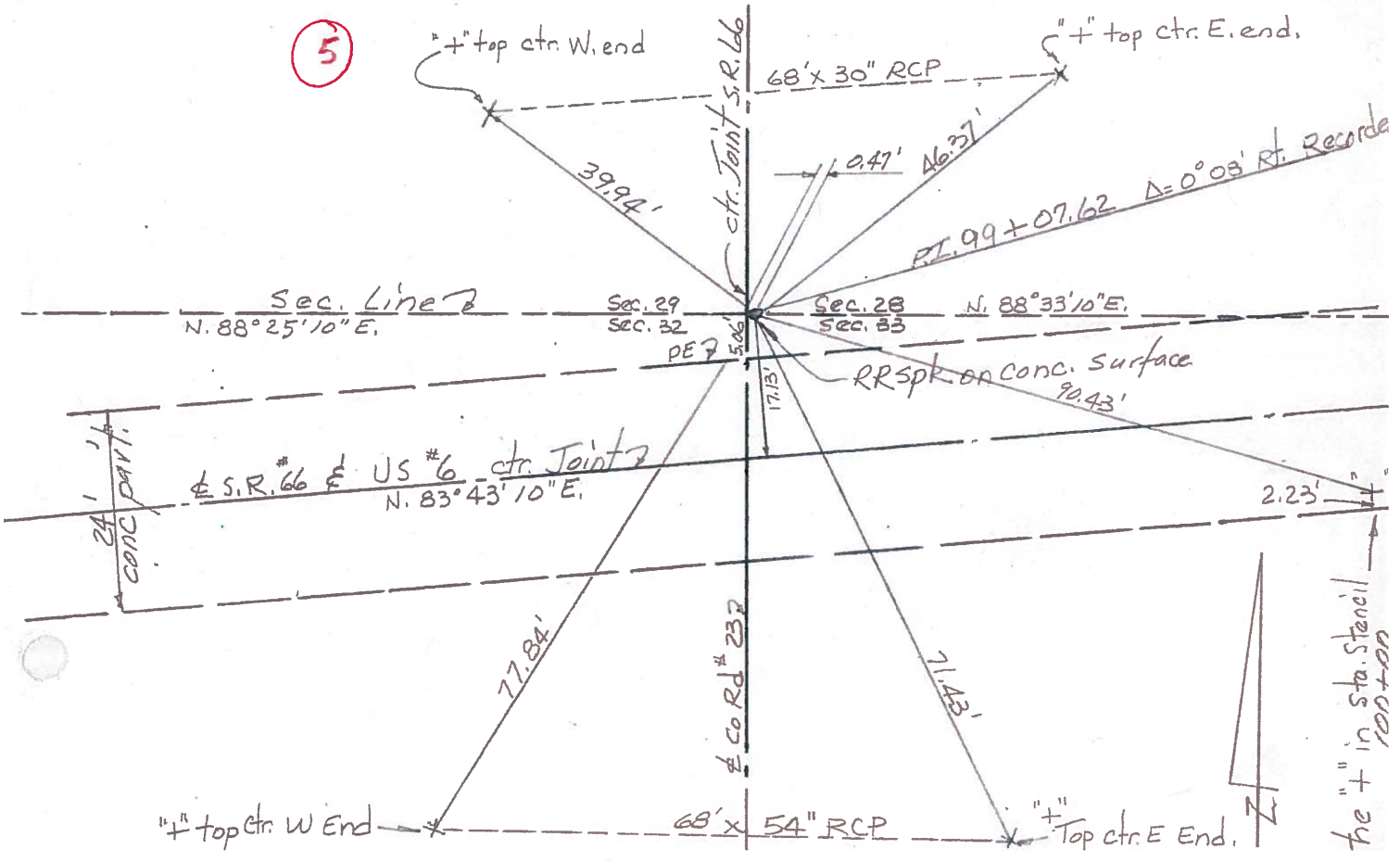


PERSONNEL	TITLE	PERSONNEL	TITLE	COUNTY	DATE	WEATHER
Red Beach				HENRY	8 July 74	
W. Knappe				US 6		
D. Boyle				Ridgerville Twp.		
J. Bagdonas						

CONTROL POINTS



5



PERSONNEL	TITLE	PERSONNEL	TITLE	PERSONNEL	TITLE
				COUNTY	Henry
				S. R.	#384
				DATE	Jan 1951
				WEATHER	
				TEMP.	
DESCRIPTION				JOB NO.	

LEFT CENTER LINE RIGHT

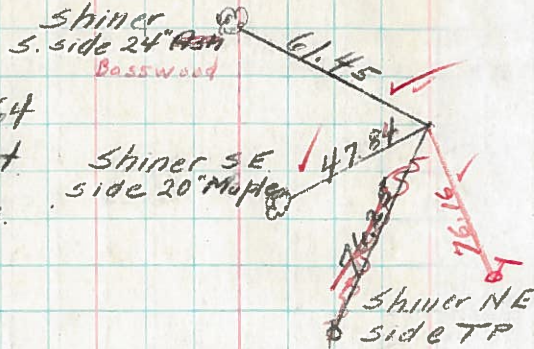
10/9/56

Sta. 125+50.64

L = 0° 11' 30" Lt

Found Small Stone

Set R.R. Spk



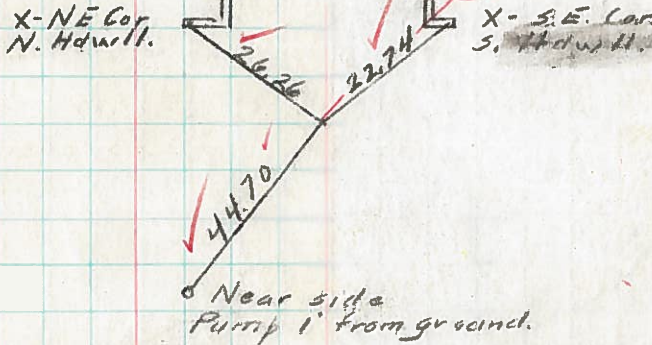
10/9/56

Sta. 151+92.72

L = 0° 02' Lt

Found I.P. over Stone

Set Nail & Shi



10/9/56

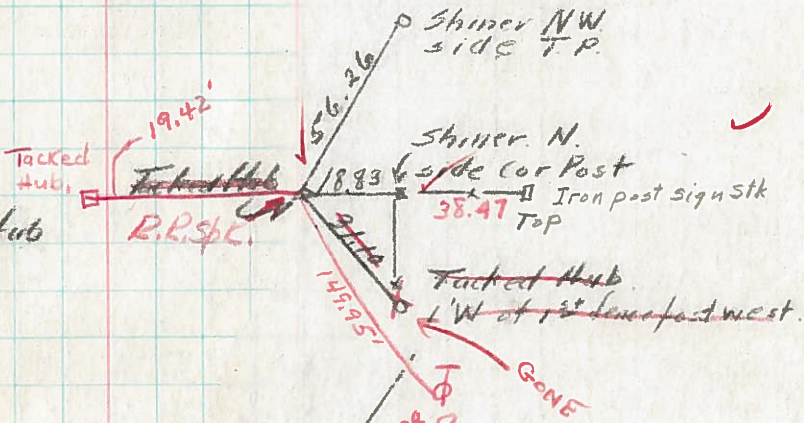
Sta. 178+49.81

L = 0° 10' Lt

Established Tacked Hub

(from old ties)

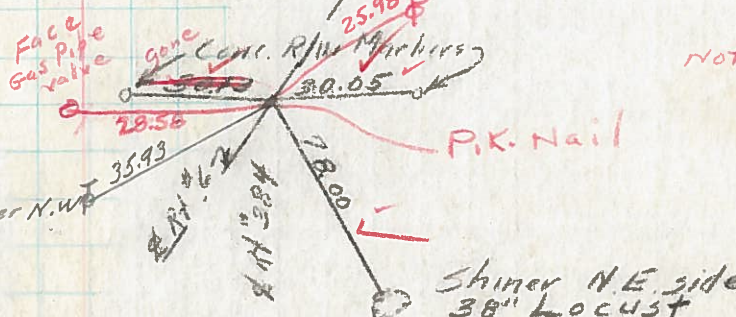
Set R.R. Spk



Sta. 188+56.43

L

Established R.R. Spk



Note: Nail & Shi 8.0' E of P.K.

Note: Found Stone on ytr ytr. line 316.87 East of R.R. Spk at Sta 188+56.43. - Stone is 4' south of con post.