

O.D.O.T. DISTRICT 2 SURVEY OFFICE (USE ONLY)

PERSONNEL

REFERENCE NO. 7

SHEET 7 OF 7

NOTES CORDES DATE 4/14/97
 H.C. MOSER WEATHER SUN
 R.C. HUSS TEMP. 32°
LOEHRKE

ROUTE US 6
 COUNTY HENRY
 TOWNSHIP RIDGEVILLE
 SECTION 34

DWG BY NIESE PID _____

T 6 N R 5 E

TYPE MONUMENT SM.R.R.SPIKE

ON SURFACE - ~~BELOW~~ ON

OFFSET ☐ PAVEMENT ON LT : RT

12.4' TO RT EDGE PAVEMENT

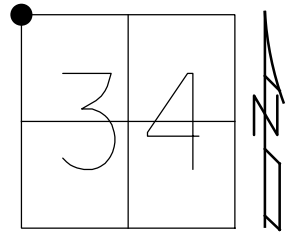
STATION: 151+67

HORZ.DATUM: _____

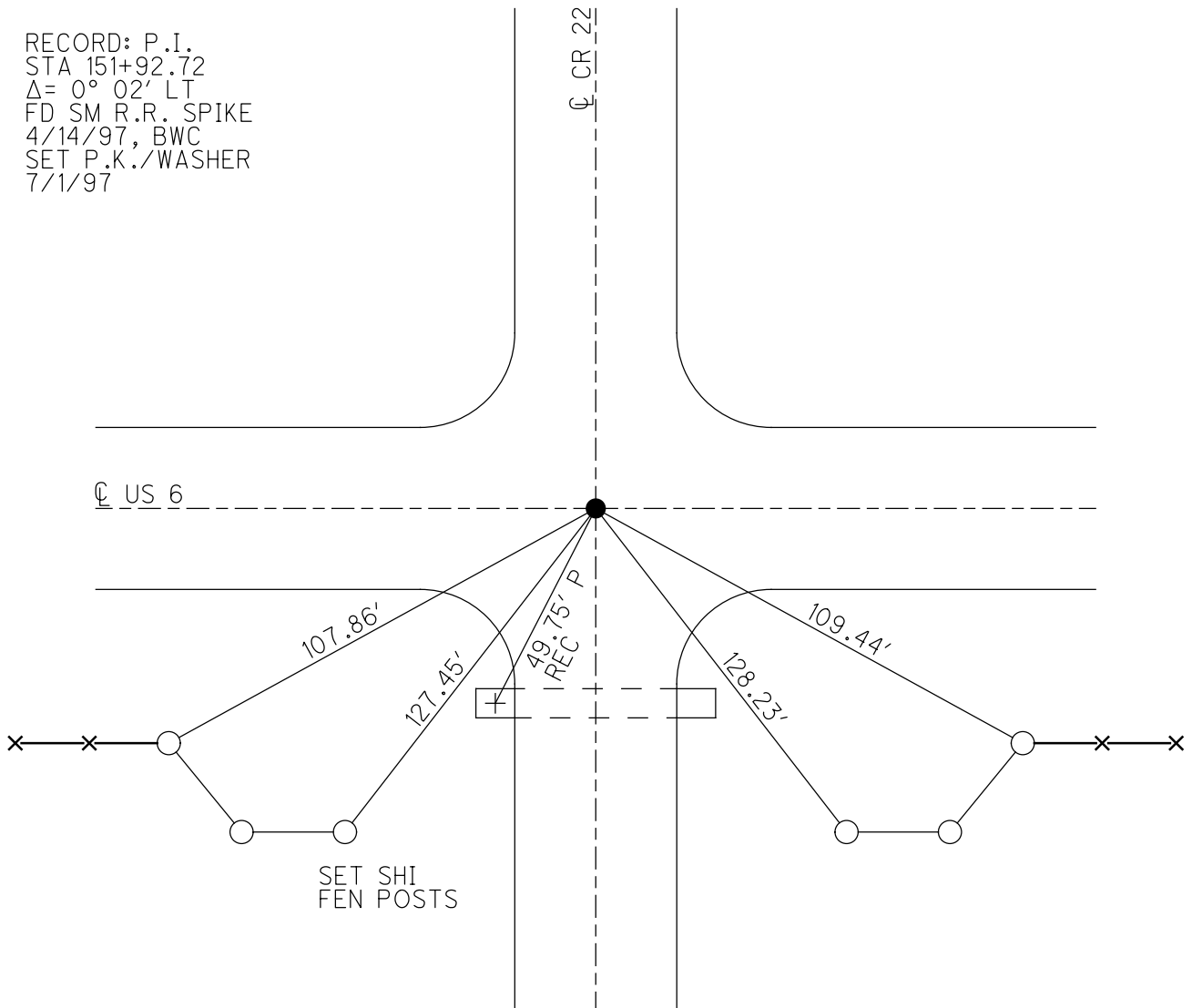
GEOID: _____

GRID: NORTHING: _____

EASTING: _____



RECORD: P.I.
 STA 151+92.72
 $\Delta = 0^\circ 02' \text{ LT}$
 FD SM R.R. SPIKE
 4/14/97, BWC
 SET P.K./WASHER
 7/1/97



O.D.O.T. DISTRICT 2 SURVEY OFFICE

PERSONNEL

REFERENCE NO. 7

SHEET 6 OF 7

NOTES COEDS

H.C. MOSER

R.C. HUSS

F LOEHRKE

DATE 4-14-97

WEATHER SUN

TEMP. +4°C

Set PK, WASJEF
7-1-97

ROUTE 6

COUNTY HENRY

TOWNSHIP RIDGEMOUNT

SECTION 27

T. 6 N. R. 5 E

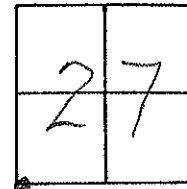
TYPE MONUMENT 3M ZR SPIKE

ON SURFACE - ~~SHOW~~ YES

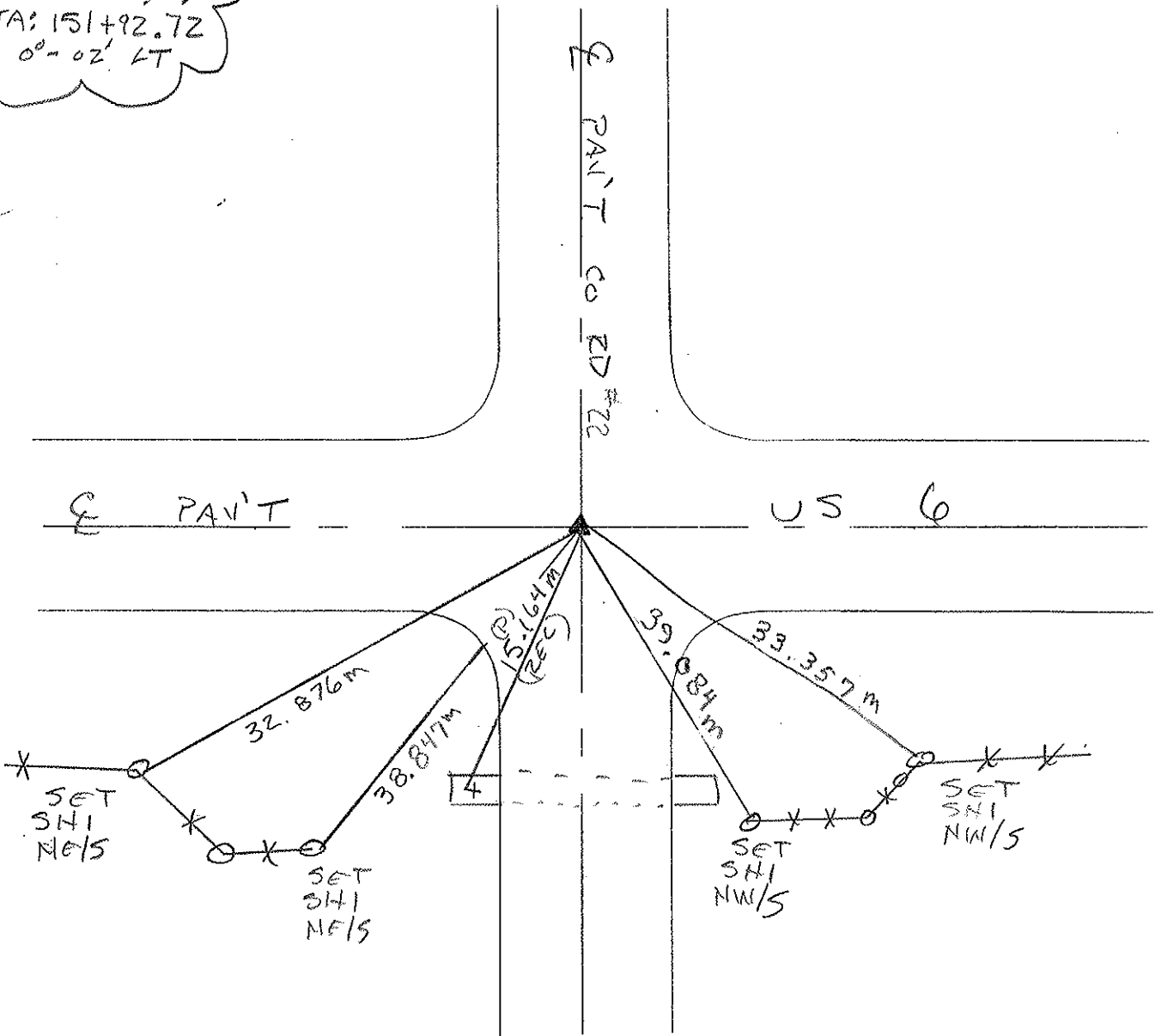
~~PAV'T.~~ - ~~RIGHT~~ YES

3.78m TO RT EDGE PAVEMENT

S.L.M. 44623 151+67 (2.87)



RECORD P.T.
STA: 151+92.72
Δ 0°-02' LT



O.D.O.T. DISTRICT 2 SURVEY OFFICE

PERSONNEL

REFERENCE NO. 7

SHEET OF

NOTES Hoffman

H.C. LOEHKE

R.C. BARNHISEL

DATE 5-17-85

WEATHER Cloudy

TEMP. 60°

ROUTE U.S. 6

COUNTY HENRY

TOWNSHIP Ridgeville

SECTION 27

T6 N R 5 E

TYPE MONUMENT R.R. SPL.

Set small R.R. SPL 6-13-85 SWH

ON SURFACE - BELOW 1 1/2"

LEFT-~~C~~ PAV'T. - RIGHT ON C

12.0 TO RT EDGE PAVEMENT

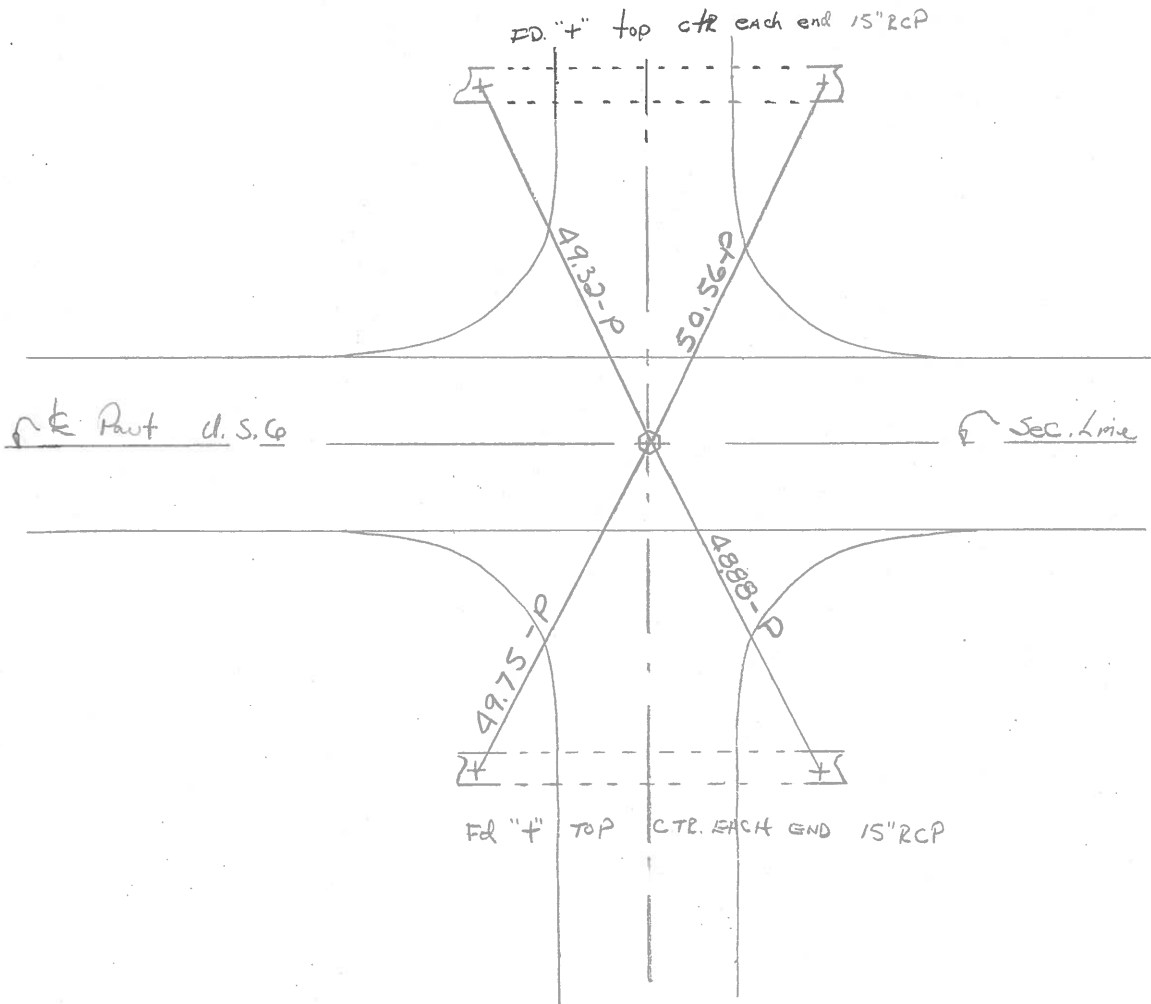
S.L.M. 151+94

28	27
33	34

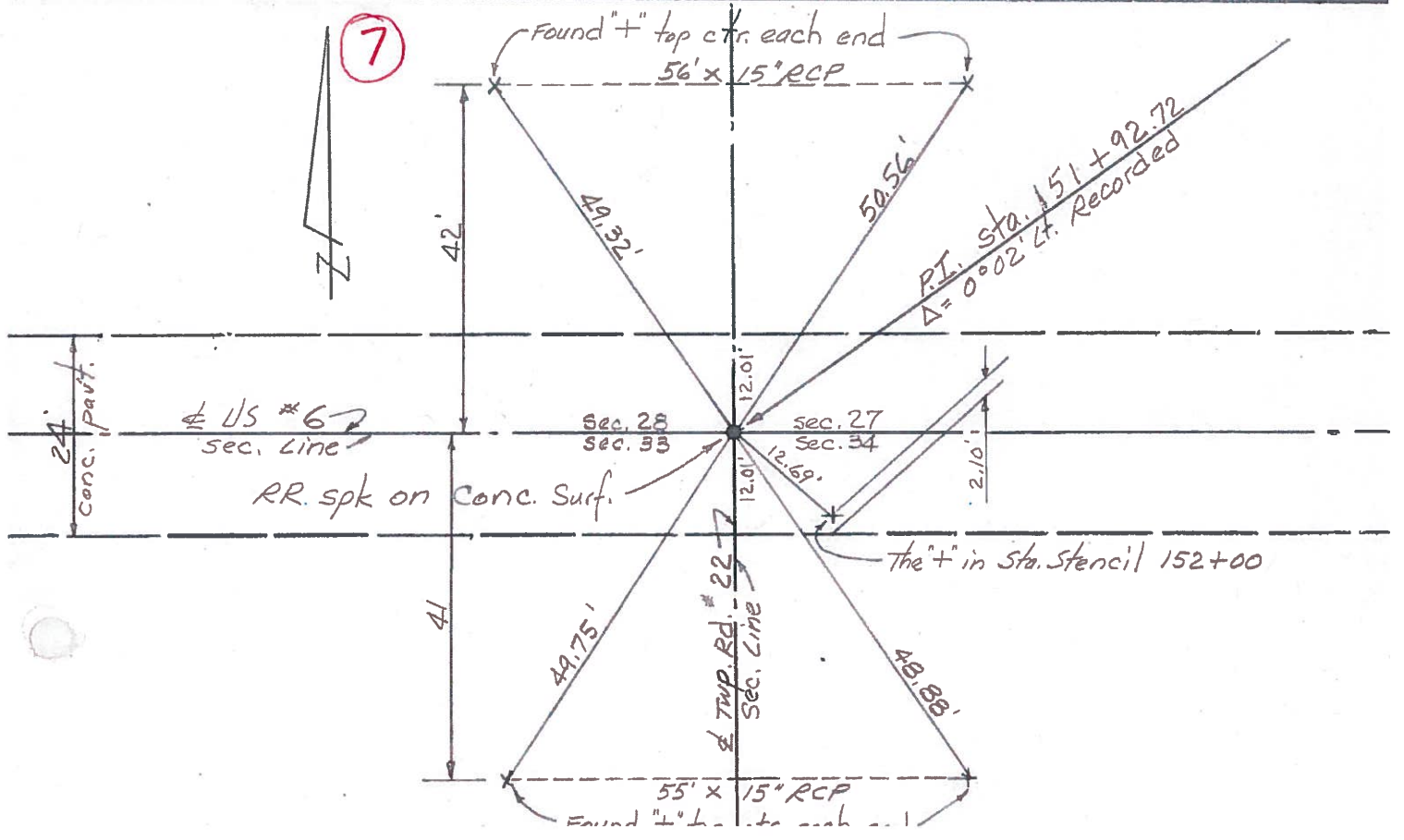
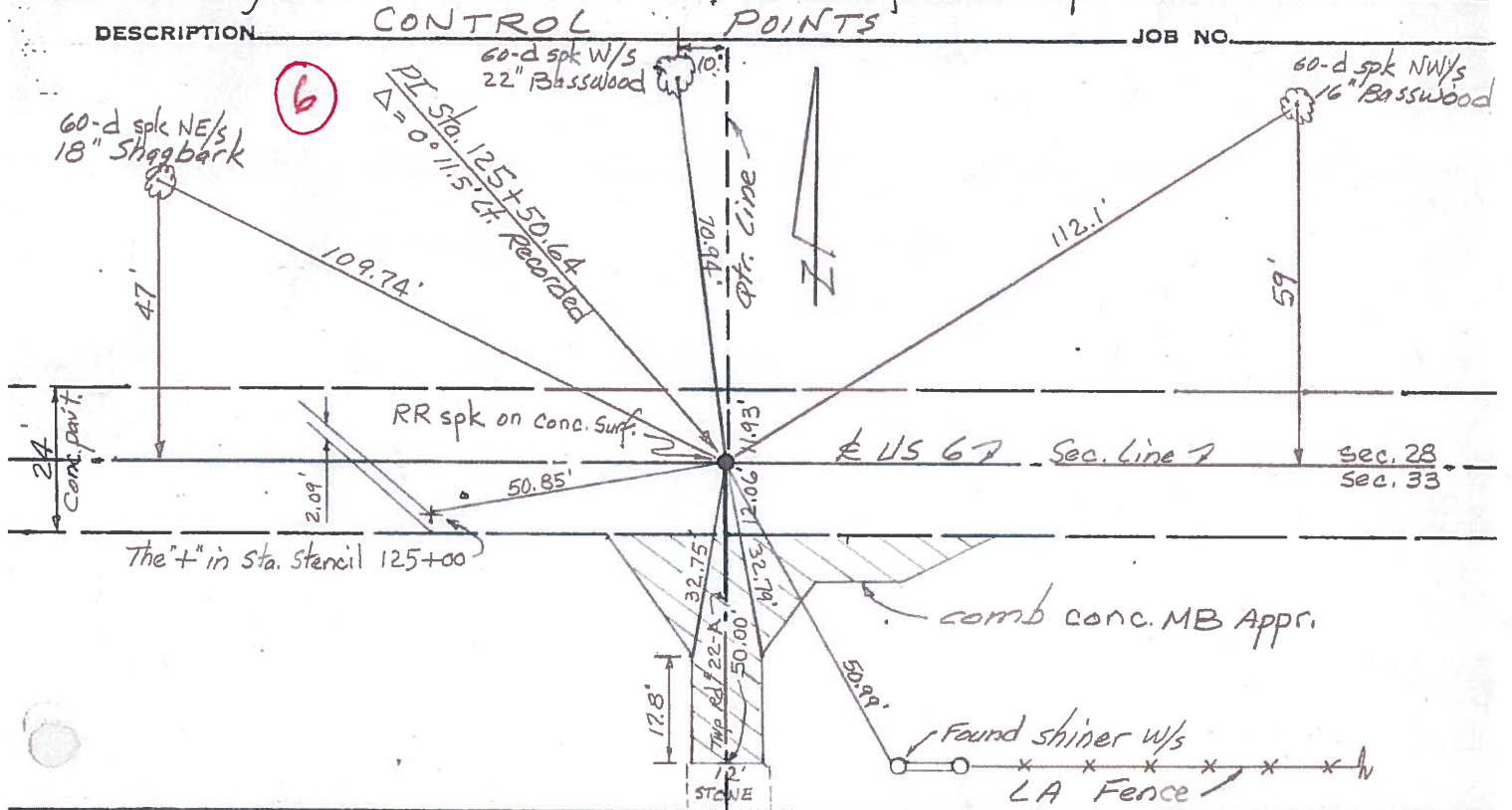


P.I. STA 151+92.72

$\Delta = 0^{\circ} - 02' 24''$ Recorded



PERSONNEL	TITLE	PERSONNEL	TITLE	COUNTY	DATE
Red Beach				HENRY	9 July '74
W. Knape				US 6	WEATHER
D. Boyle				SEC. Ridgeville Twp.	TEMP.
J. Bagdonas					



PERSONNEL TITLE PERSONNEL TITLE

COUNTY Henry DATE Jan 1951

S. R. #384 WEATHER _____

SEC. _____ TEMP. _____

DESCRIPTION _____ JOB NO. _____

LEFT CENTER LINE RIGHT

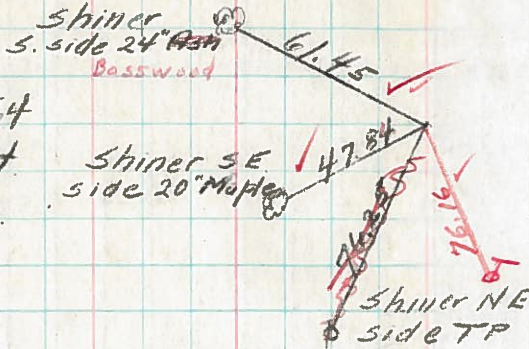
10/9/56

Sta. 125+50.64

L = 0° 11' 30" Lt

Found Small Stone

Set R.R. Spk



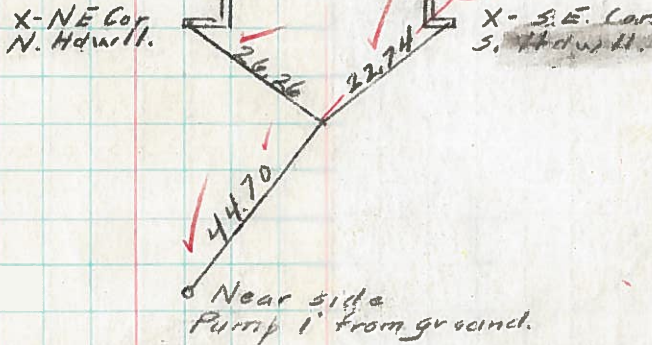
10/9/56

Sta. 151+92.72

L = 0° 02' Lt

Found I.P. over Stone

Set Nail & Shi



10/9/56

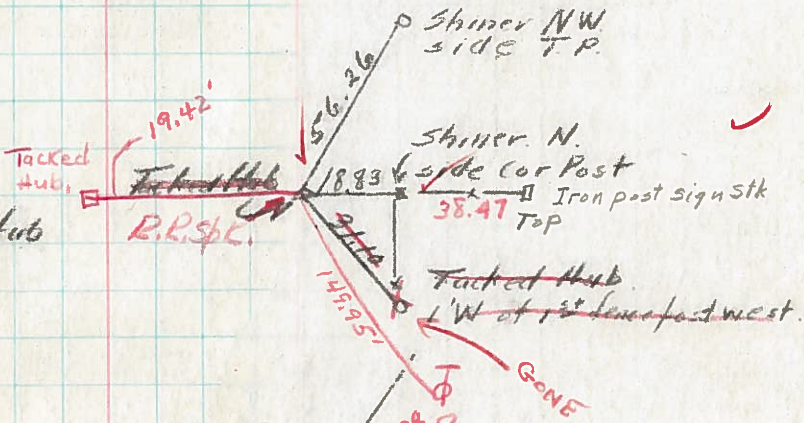
Sta. 178+49.81

L = 0° 10' Lt

Established Tacked Hub

(from old ties)

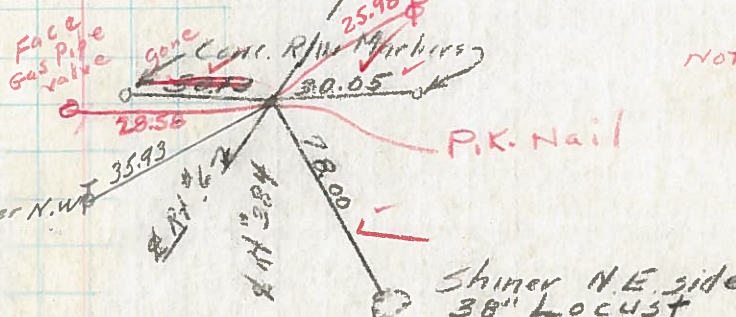
Set R.R. Spk



Sta. 188+56.43

L

Established R.R. Spk



Note: Nail & Shi 8.0' E of P.K.

Note: Found Stone on ytr ytr. line 316.87 East of R.R. Spk at Sta 188+56.43. - Stone is 4' south of con post.