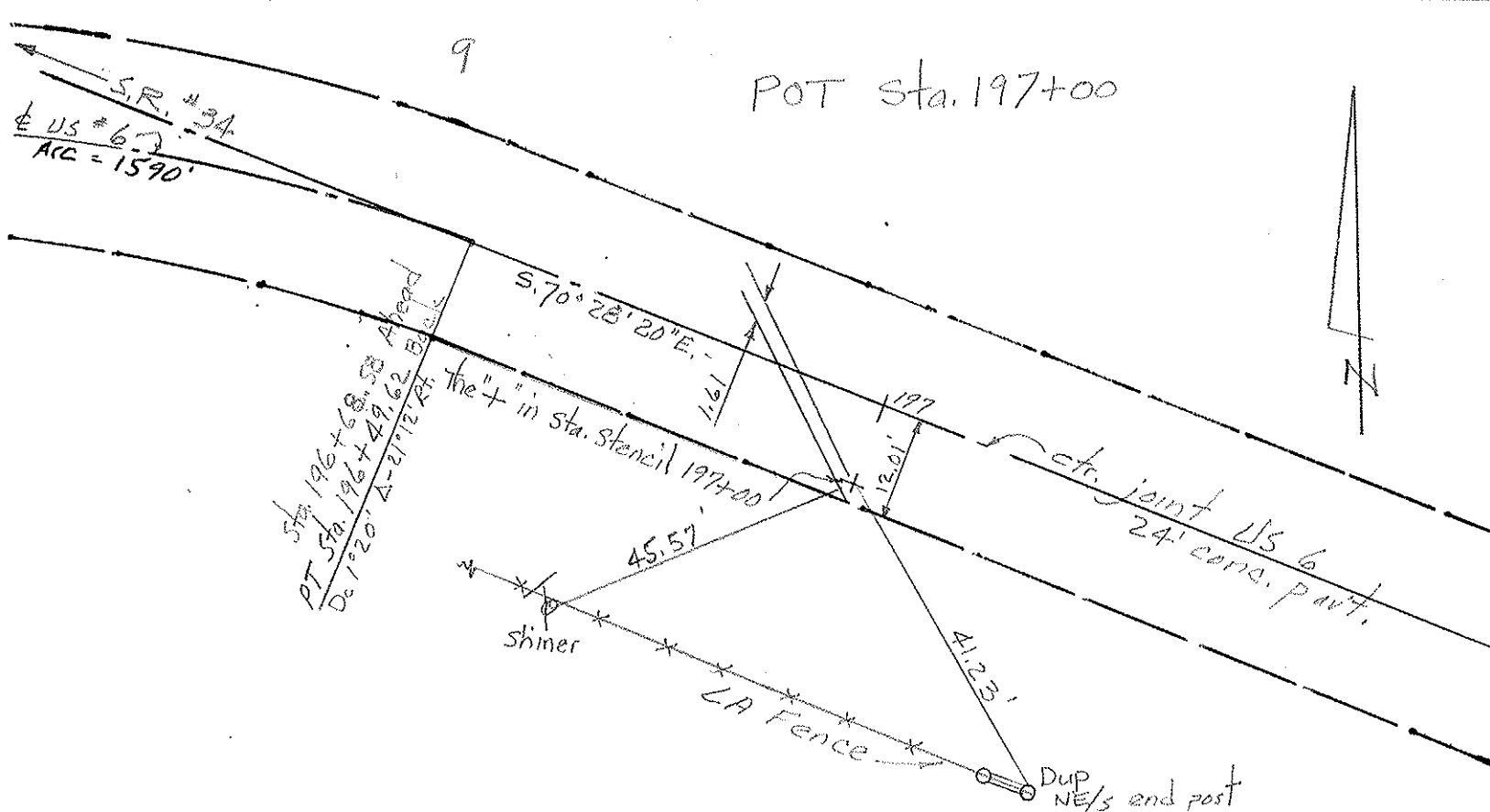
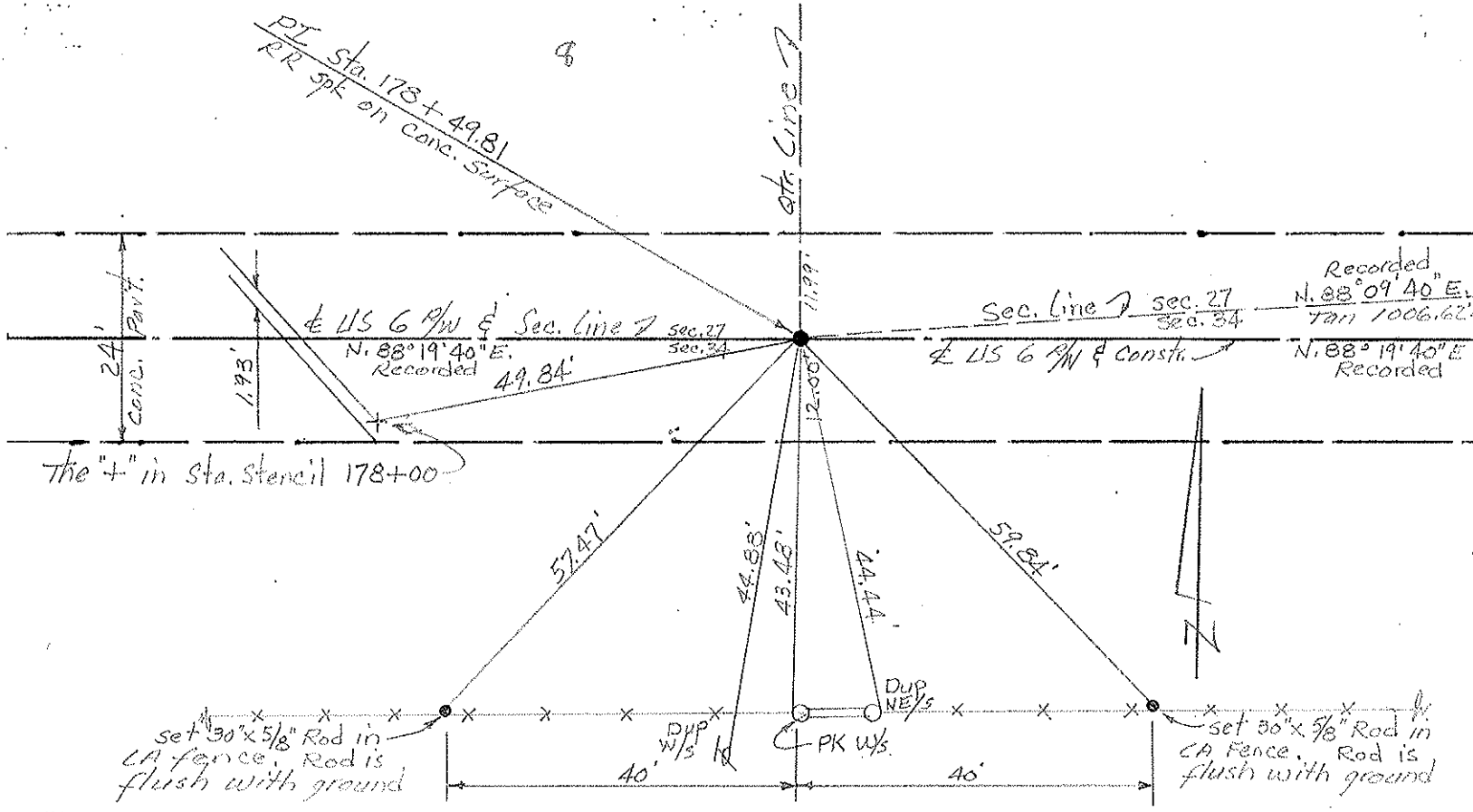


PERSONNEL	TITLE	PERSONNEL	TITLE	COUNTY	DATE
Red Beach				HENRY	9 July 74
W. Knape				U.S. 6	WEATHER
D. Boyle				SEC. Ridgeville Twp	TEMP.
J. Bagdonas					

DESCRIPTION: CONTROL POINTS



PERSONNEL TITLE PERSONNEL TITLE

COUNTY Henry DATE Jan 1951

S. R. #384 WEATHER \_\_\_\_\_

SEC. \_\_\_\_\_ TEMP. \_\_\_\_\_

DESCRIPTION \_\_\_\_\_ JOB NO. \_\_\_\_\_

LEFT CENTER LINE RIGHT

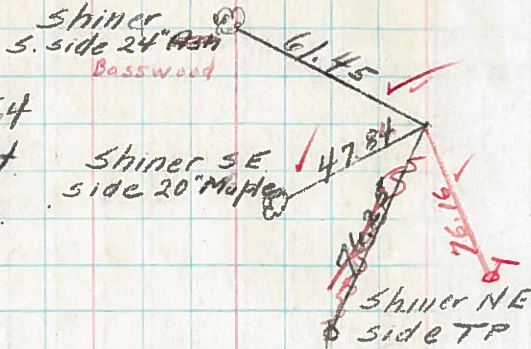
10/9/56

Sta. 125+50.64

L = 0° 11' 30" Lt

Found Small Stone

Set R.R. Spk



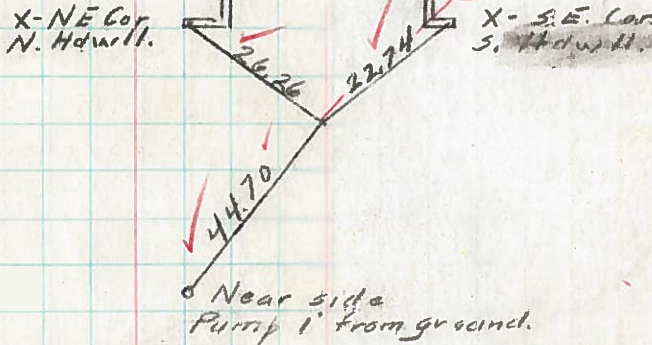
10/9/56

Sta. 151+92.72

L = 0° 02' Lt

Found I.P. over Stone

Set Nail & Shi



10/9/56

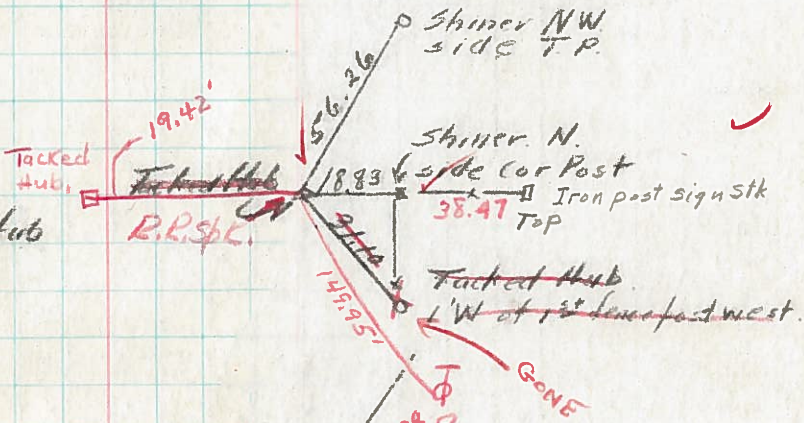
Sta. 178+49.81

L = 0° 10' Lt

Established Tacked Hub

(from old ties)

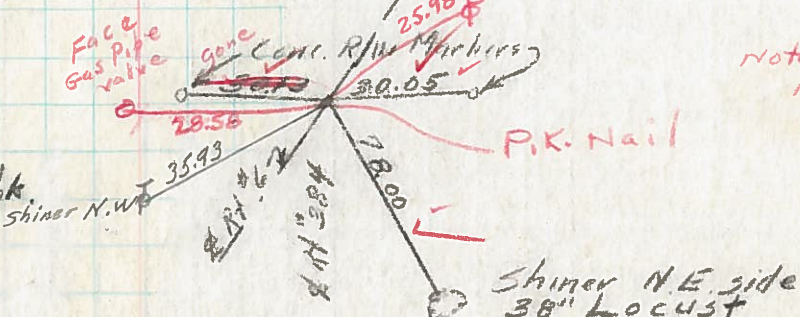
Set R.R. Spk.



Sta. 188+56.43

L

Established R.R. Spk



Note: Nail & Shi 8.0' E of P.K.

Note: Found Stone on ytr ytr. line 316.87 East of R.R. Spk at Sta 188+56.43. - Stone is 4' south of con post.