

O.D.O.T. DISTRICT 2 SURVEY OFFICE (USE ONLY)

PERSONNEL _____ REFERENCE NO. 14 SHEET 5 OF 37

NOTES POORE DATE 5/17/17 ROUTE US 6
 H.C. LEU WEATHER CLOUDY COUNTY HENRY
 R.C. CARSON TEMP. 72° TOWNSHIP RIDGEVILLE
HOMAN
RHOADES SECTION 35
 T 6 N R 5 E

TYPE MONUMENT MAG/WASHER

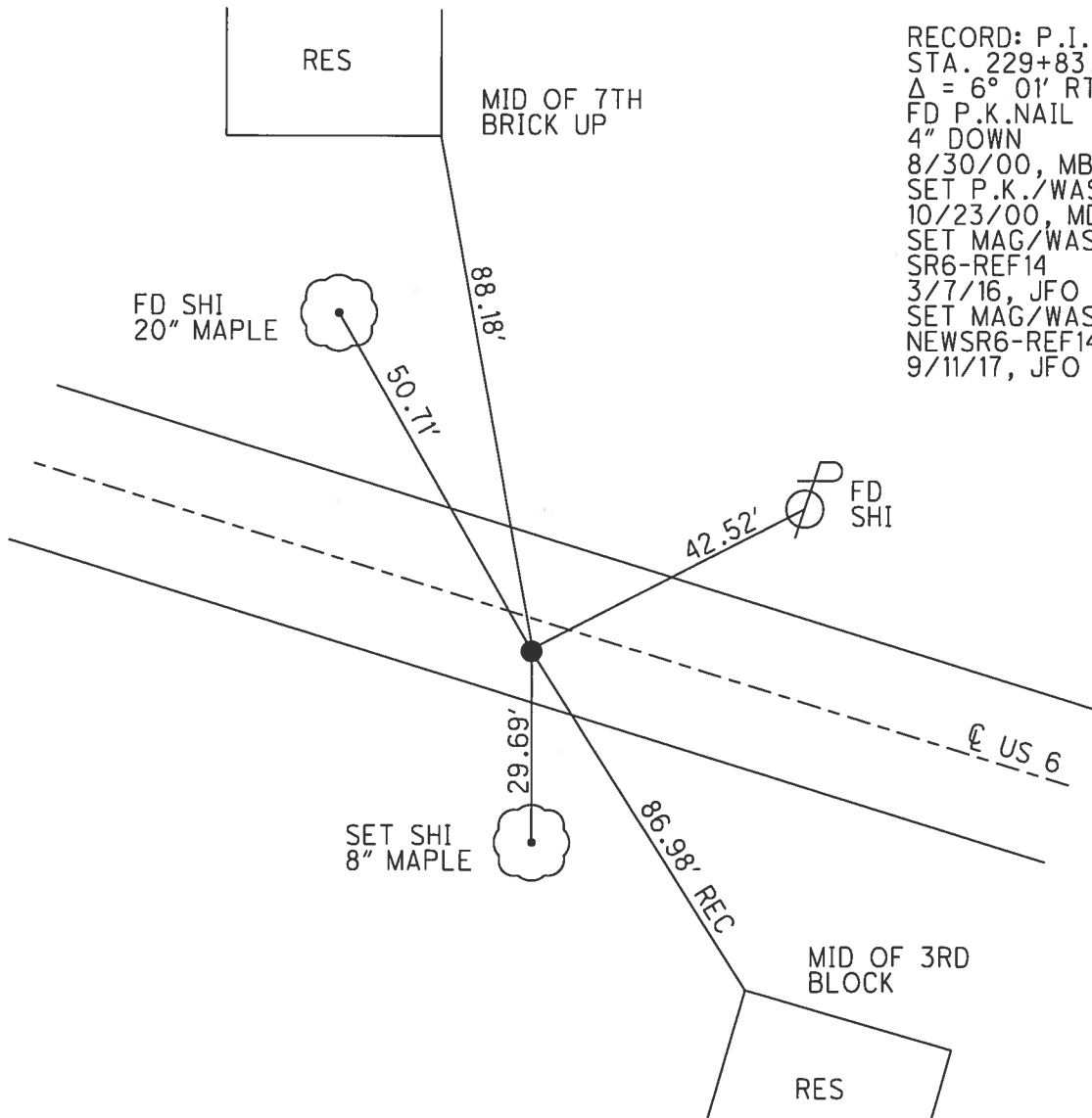
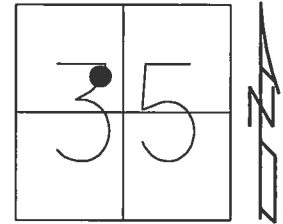
ON SURFACE - ~~BELOW~~ ON _____

~~LEFT~~ - Q PAV'T - RIGHT 2.5'

9.8' TO RT EDGE PAVEMENT

S.L.M. 230+03.58

Grid: Northing: 650290.968 Easting: 1486267.256



RECORD: P.I.
 STA. 229+83.63
 $\Delta = 6^\circ 01' RT$
 FD P.K.NAIL
 4" DOWN
 8/30/00, MB
 SET P.K./WASHER
 10/23/00, MDB
 SET MAG/WASHER
 SR6-REF14
 3/7/16, JFO
 SET MAG/WASHER
 NEWSR6-REF14
 9/11/17, JFO

O.D.O.T. DISTRICT 2 SURVEY OFFICE

PERSONNEL

REFERENCE NO. 14

SHEET 4 OF 35

NOTES BARNHISEL

H.C. MOSEK

DATE 8-30-00

ROUTE US 6

R.C. CANTERBURY

WEATHER SUNNY

COUNTY HENRY

TEMP. +85°

TOWNSHIP RIDGEVILLE

SECTION 35

T 6 N R 5 E

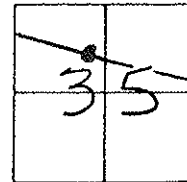
TYPE MONUMENT PK NAIL

~~ON SURFACE~~ - BELOW 4"

~~LEFT - C~~ PAV'T. - RIGHT 2.4'

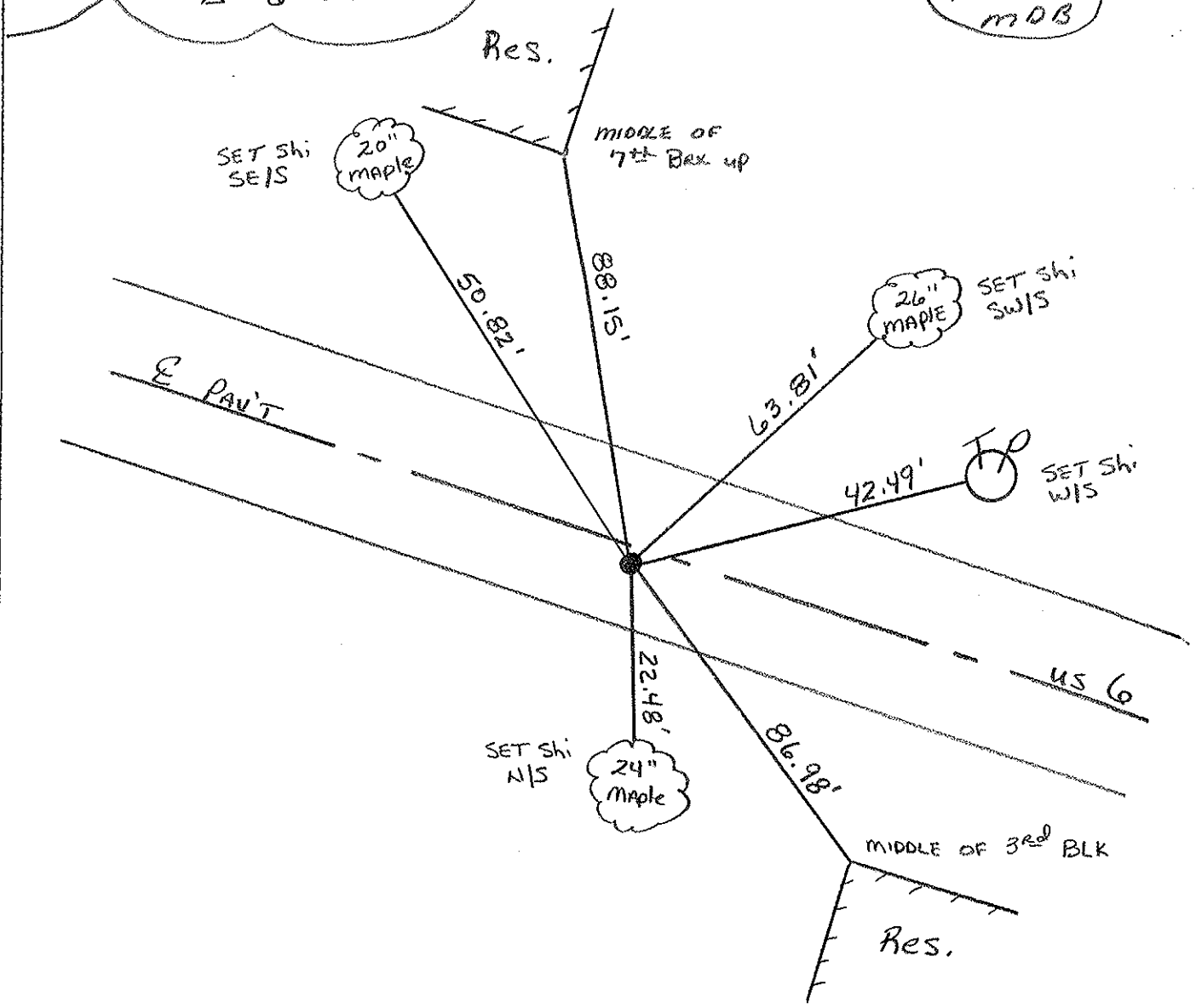
9.8' TO RT EDGE PAVEMENT

S.L.M. 229+64



Record: PI = STA: 229+83.63
 $\Delta = 6^{\circ} - 01' \text{ RT}$

Reset PK/WASHER
 10-23-00
 M.D.B.

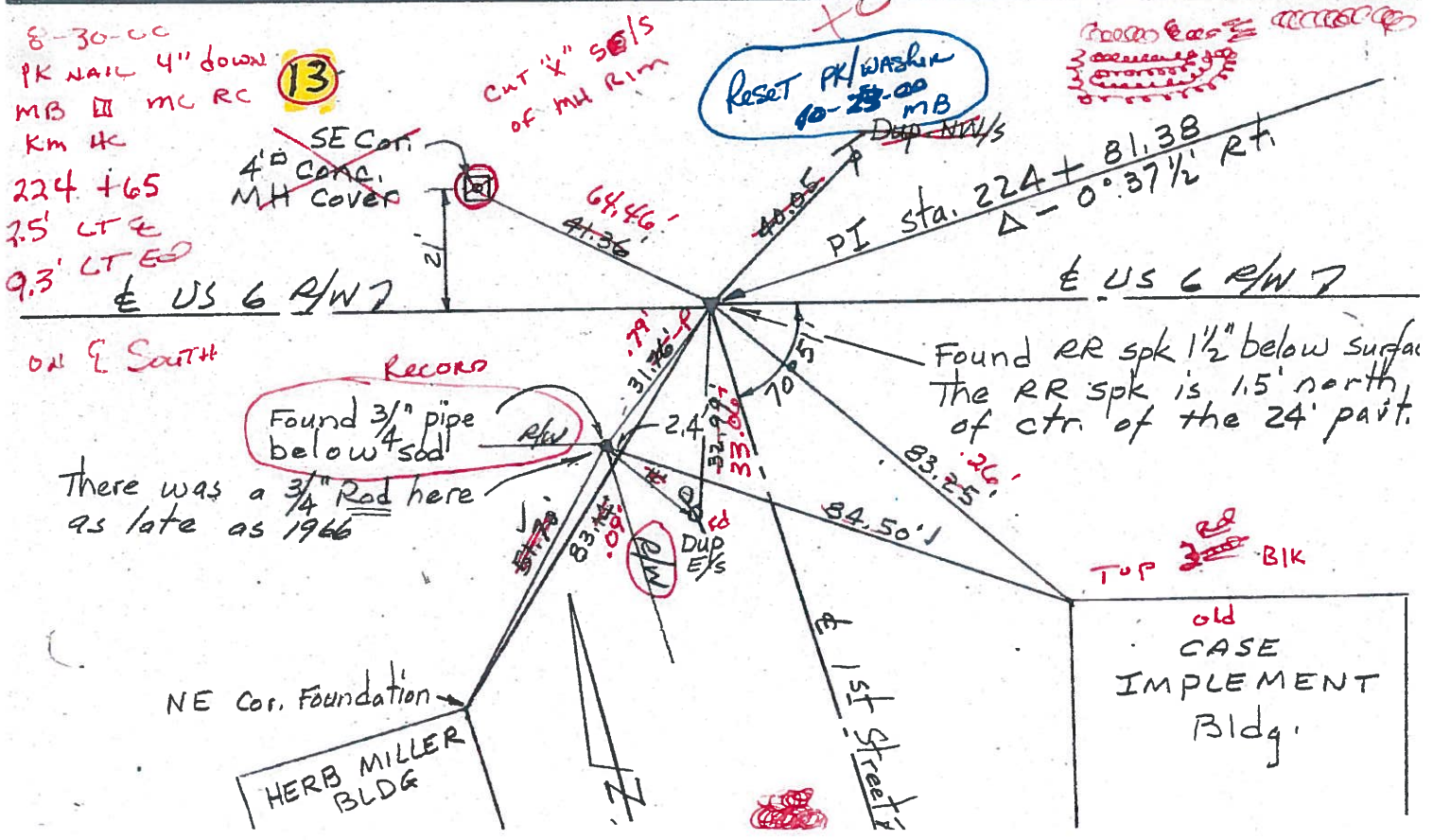
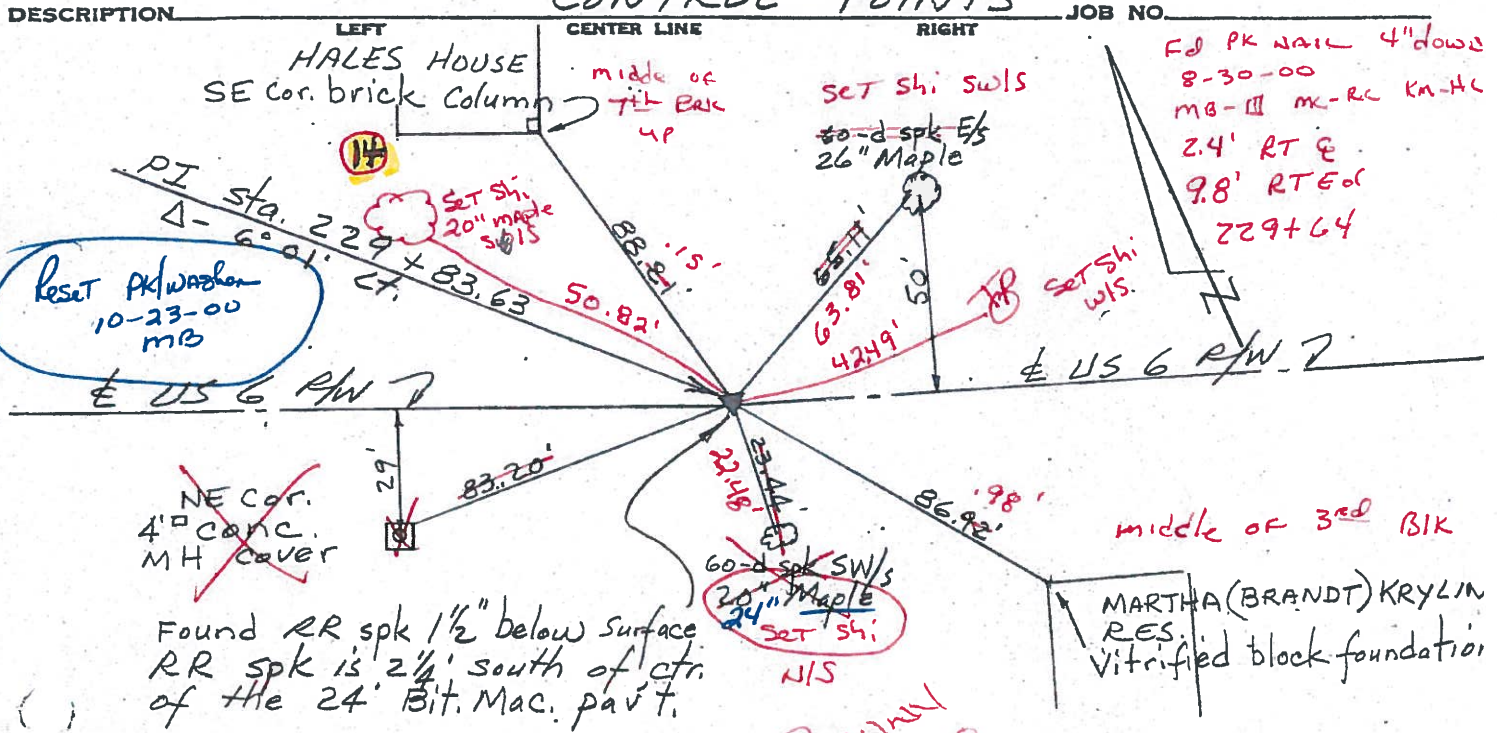


PERSONNEL	TITLE	PERSONNEL	TITLE
Red Beach			
W. Knappe			

COUNTY HENRY DATE 17 Mar 77
 S. R. US 6 WEATHER _____

SEC. Ridgeville TEMP _____

CONTROL POINTS



PERSONNEL TITLE PERSONNEL TITLE

Red Beach
Armbruster
Knappe
Mohler

COUNTY HENRY DATE Dec. '63

S. R. US #6 WEATHER

SEC. Ridgville Twp TEMP.

DESCRIPTION CONTROL POINTS Sec. 35 JOB NO. _____

LEFT CENTER LINE RIGHT

P.I. sta. 224 + 81.38 $\Delta = 0^\circ 31\frac{1}{2}'$ Rt.

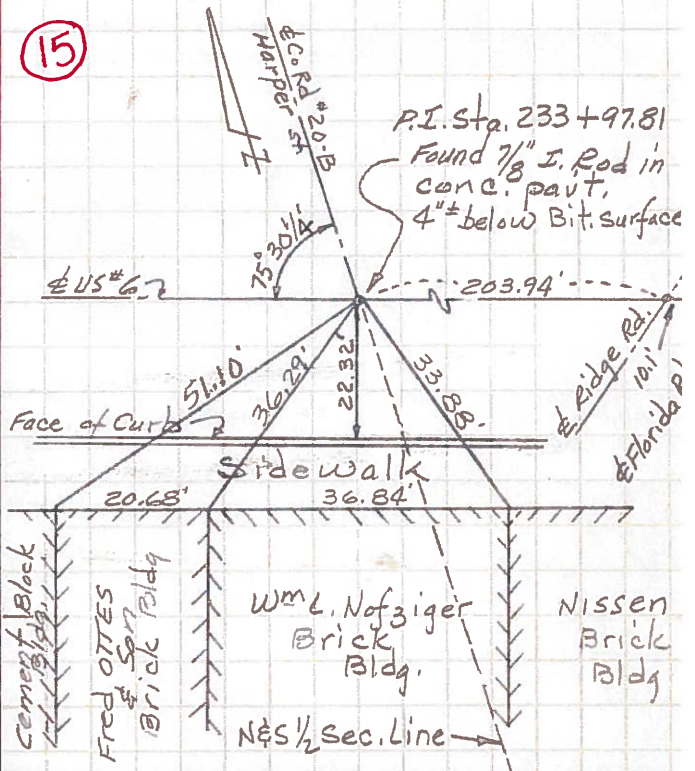
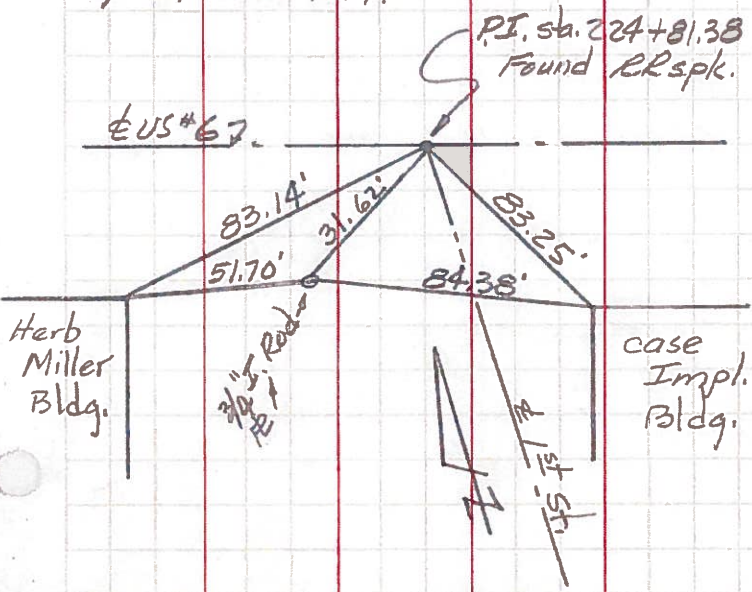
P.I. sta. 233 + 97.81 $\Delta = 1^\circ 09\frac{1}{2}'$ Lt.

13

RR spk is $1\frac{1}{2}'$ N of ctr of 24' T-35 pav't.

15

P.I. Sta. 233 + 97.81
Found $\frac{7}{8}"$ I. Rod in conc. pav't, 4" below Bit. surface



14

P.I. sta. 229 + 83.63 $\Delta = 6^\circ 01'$ Lt.

P.I. sta. 236 + 01.75 $\Delta = 2^\circ 09\frac{1}{4}'$ Lt.

Creager Res. Brick Column
RR spk E/S of 24" Maple

16

Found 1" I. Rod in Cone Pt 4" below Bit. surface
P.I. sta. 236 + 01.75

