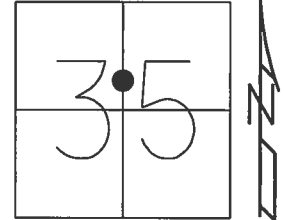


O.D.O.T. DISTRICT 2 SURVEY OFFICE (USE ONLY)

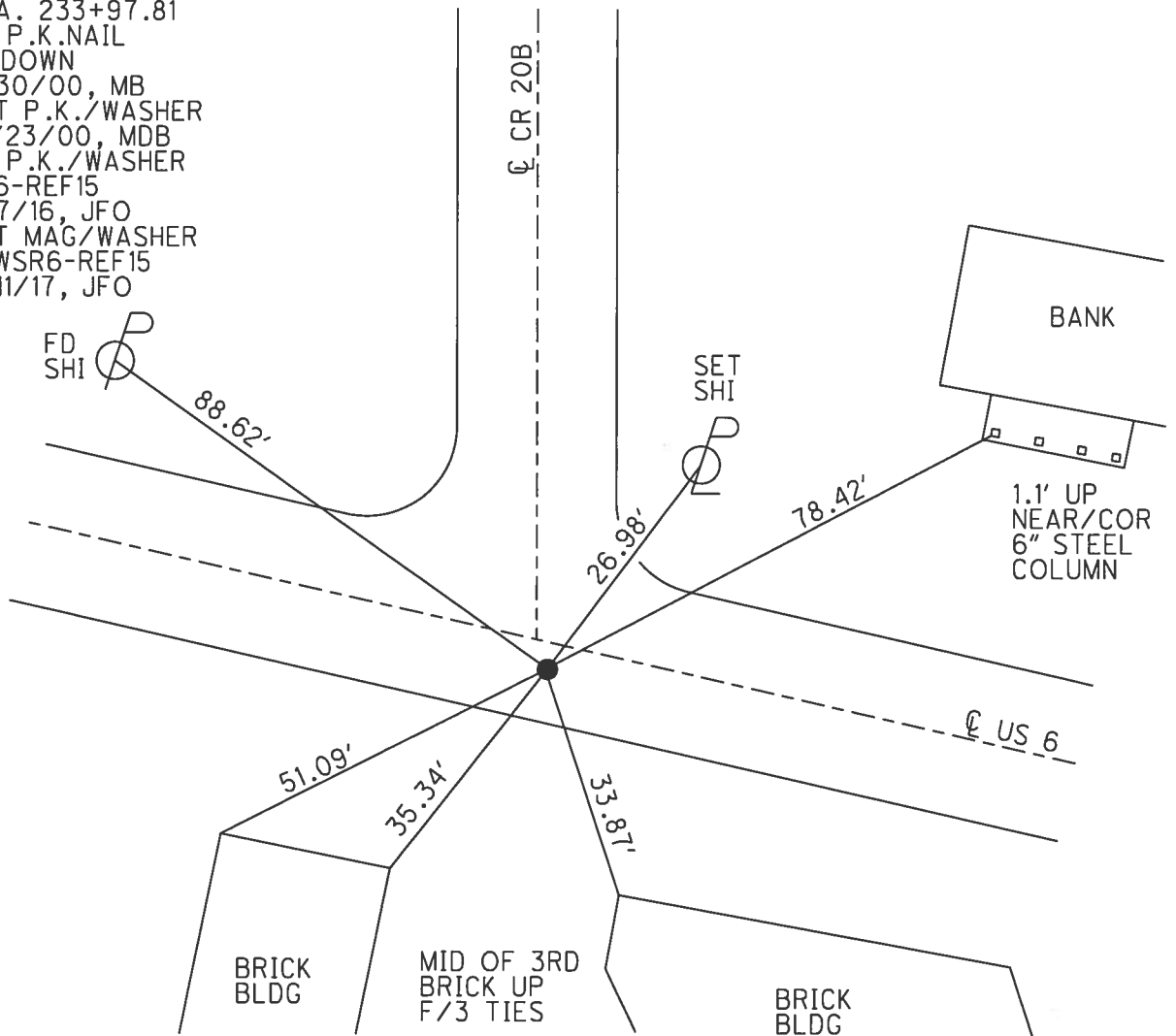
PERSONNEL _____ REFERENCE NO. 15 SHEET 6 OF 37
 NOTES O'DONNELL DATE 10/20/17 ROUTE US 6
 H.C. LEU WEATHER SUNNY COUNTY HENRY
 R.C. FARKAS TEMP. 59° TOWNSHIP RIDGEVILLE
 SECTION 35
 T 6 N R 5 E

TYPE MONUMENT P.K./WASHER
 ON SURFACE - ~~BELOW~~ ON
~~LEFT~~ - ☉ PAV'T - RIGHT 2.6'
22.2' TO RT EDGE PAVEMENT
 S.L.M. 234+17.59



Grid: Northing: 650179.284 Easting: 1486665.918

RECORD: P.I.
 STA. 233+97.81
 FD P.K.NAIL
 4" DOWN
 8/30/00, MB
 SET P.K./WASHER
 10/23/00, MDB
 FD P.K./WASHER
 SR6-REF15
 3/7/16, JFO
 SET MAG/WASHER
 NEWSR6-REF15
 9/11/17, JFO



O.D.O.T. DISTRICT 2 SURVEY OFFICE

PERSONNEL _____

REFERENCE NO. 15

SHEET 5 OF 35

NOTES BARNHISEL

H.C. MOSEK

DATE 8-30-00

ROUTE US 6

R.C. CANTERBURY

WEATHER SUNNY

COUNTY HENRY

TEMP. +85°

TOWNSHIP RIDGEVILLE

SECTION 35

T 6 N R 5 E

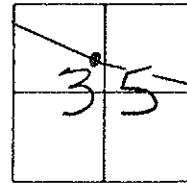
TYPE MONUMENT PK NAIL

ON SURFACE - BELOW 4"

LEFT - E PAV'T - RIGHT 1.0'

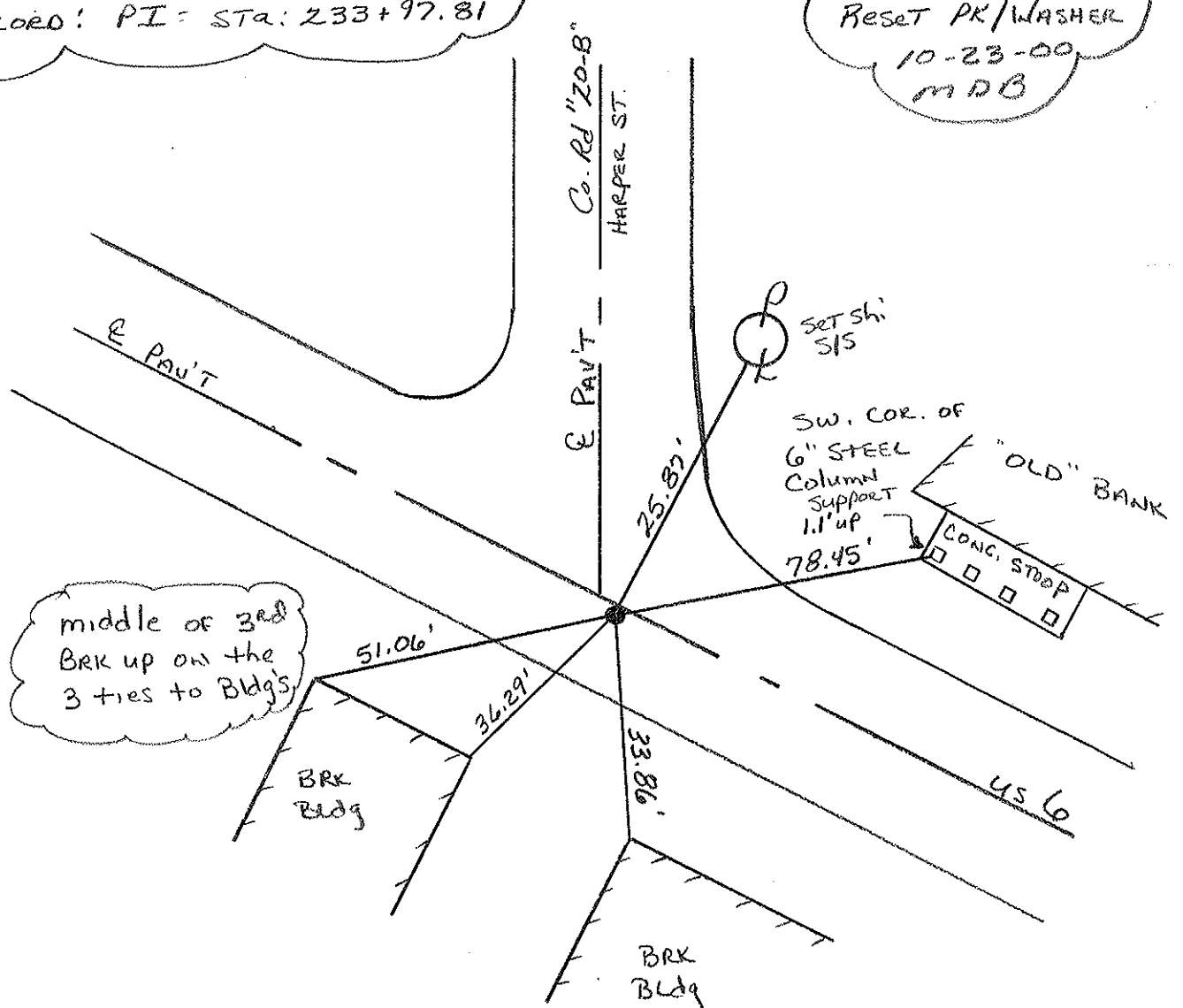
22.2 TO RT EDGE PAVEMENT

S.L.M. 233+77 1' EAST OF E NORTH



Record: PI = Sta: 233+97.81

Reset PK/WASHER
10-23-00
MDB



middle of 3rd
BRK up on the
3 ties to Bldg's

SET shi
SIS

SW. COR. OF
6" STEEL
Column
Support
1.1' up

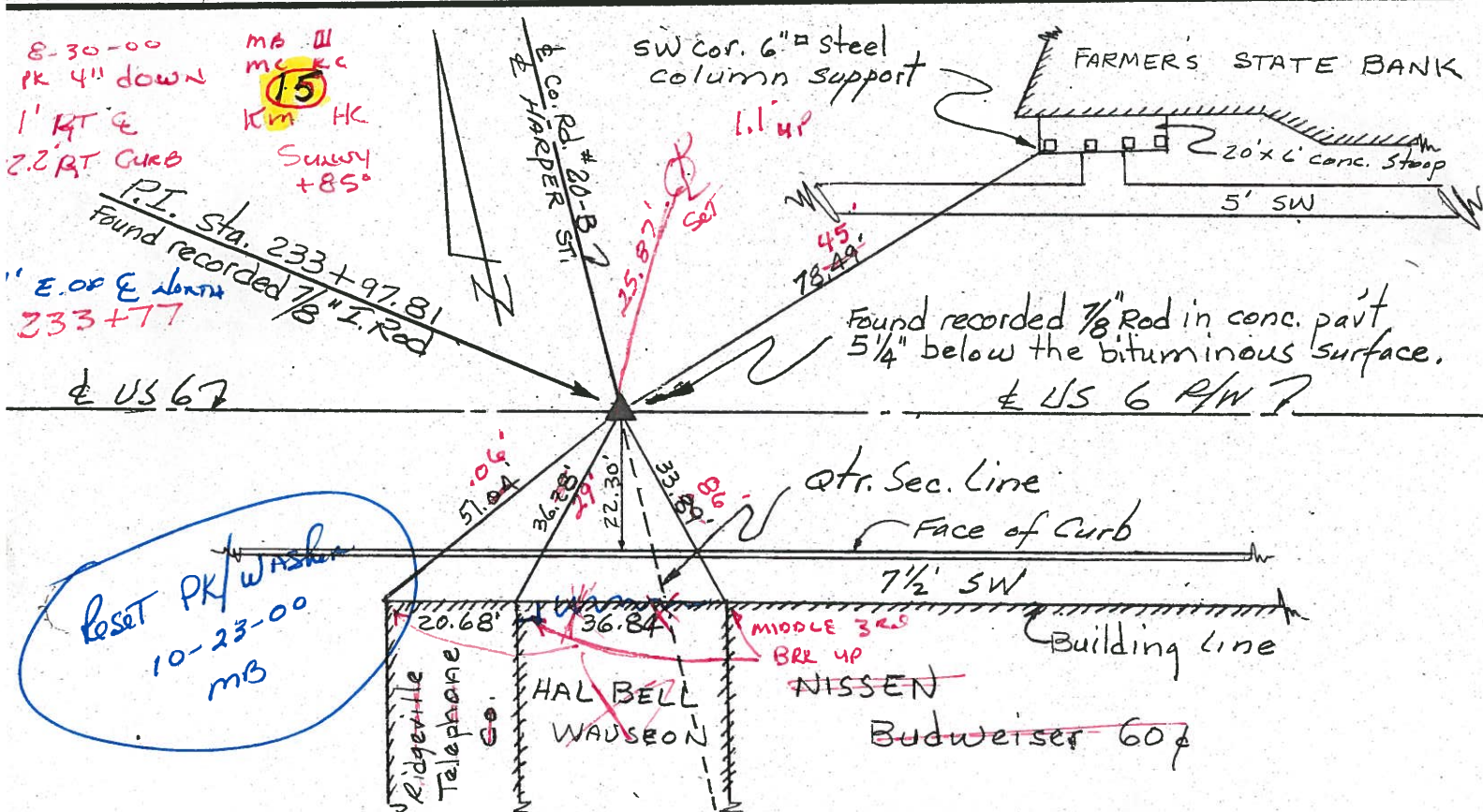
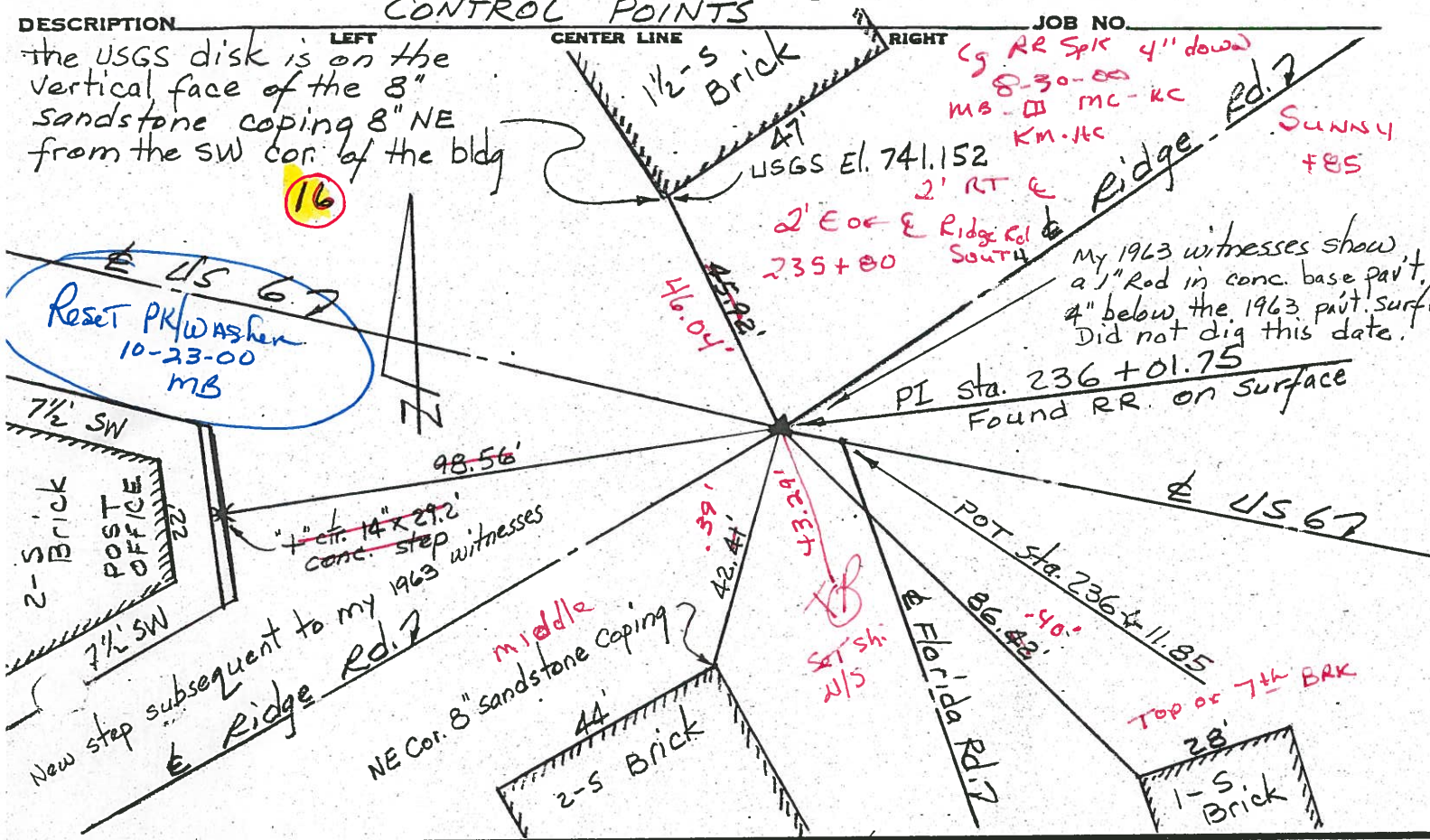
"OLD" BANK

CONC. STOOP

BRK
Bldg

BRK
Bldg

PERSONNEL TITLE PERSONNEL TITLE COUNTY HENRY DATE 21 Mar. 77
Red Beach
W. Knappe
 S. R. US 6 WEATHER _____
 SEC. Ridgeville TEMP. _____



PERSONNEL TITLE PERSONNEL TITLE

Red Beach
Armbruster
Knappe
Mohler

COUNTY HENRY DATE Dec. 63

S. R. US #6 WEATHER

SEC. Ridgville Twp TEMP.

DESCRIPTION CONTROL POINTS Sec. 35 JOB NO.

LEFT

CENTER LINE

RIGHT

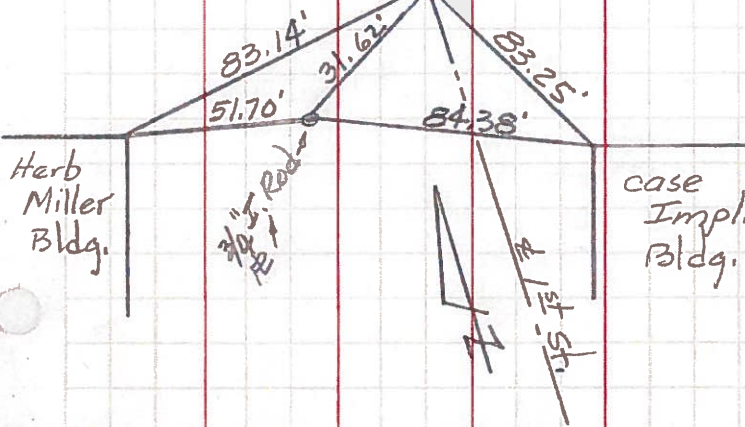
P.I. sta. 224 + 81.38 $\Delta = 0^\circ 31' 1/2$ Rt.

13

RR spk is 1 1/2' N of ctr of 24" T-35 Pav't.

P.I. sta. 224 + 81.38 Found RR spk.

US #67



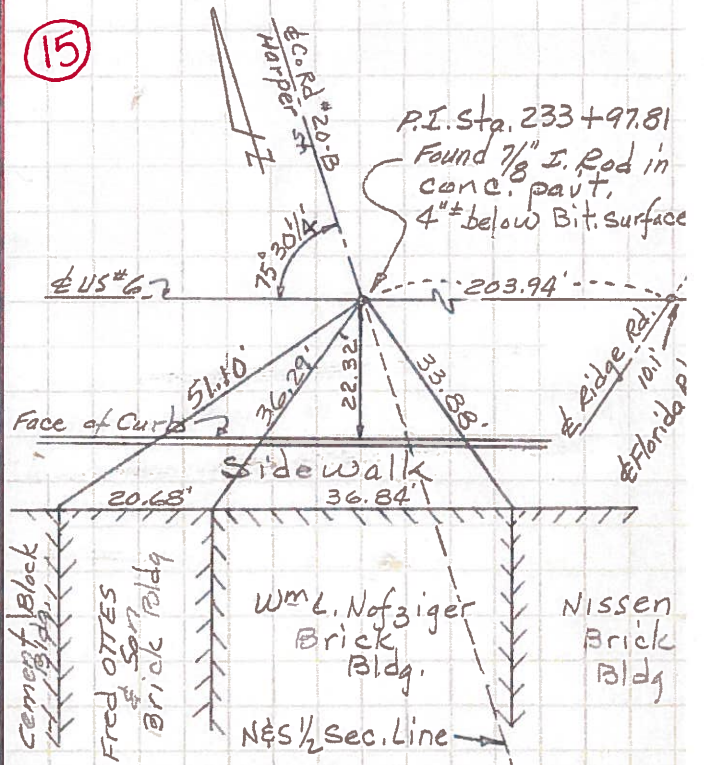
P.I. sta. 233 + 97.81 $\Delta = 1^\circ 09' 1/2$ Lt.

15

P.I. Sta. 233 + 97.81

Found 7/8" I. Rod in conc. pav't, 4" below Bit. surface

US #67



P.I. sta. 229 + 83.63 $\Delta = 6^\circ 01'$ Lt.

14

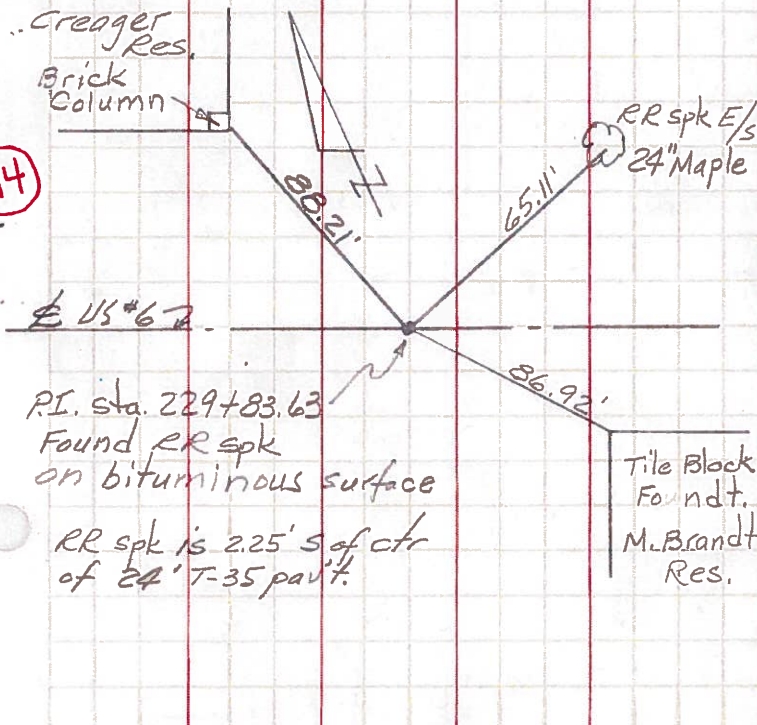
Creager Res. Brick Column

RR spk E/S 24" Maple

US #67

P.I. sta. 229 + 83.63 Found RR spk on bituminous surface RR spk is 2.25' S of ctr of 24" T-35 pav't.

Tile Block Found. M. Brandt Res.



P.I. sta. 236 + 01.75 $\Delta = 2^\circ 09' 1/4$ Lt.

16

Found 1" I. Rod in Cone Pav't 4" below Bit. surface

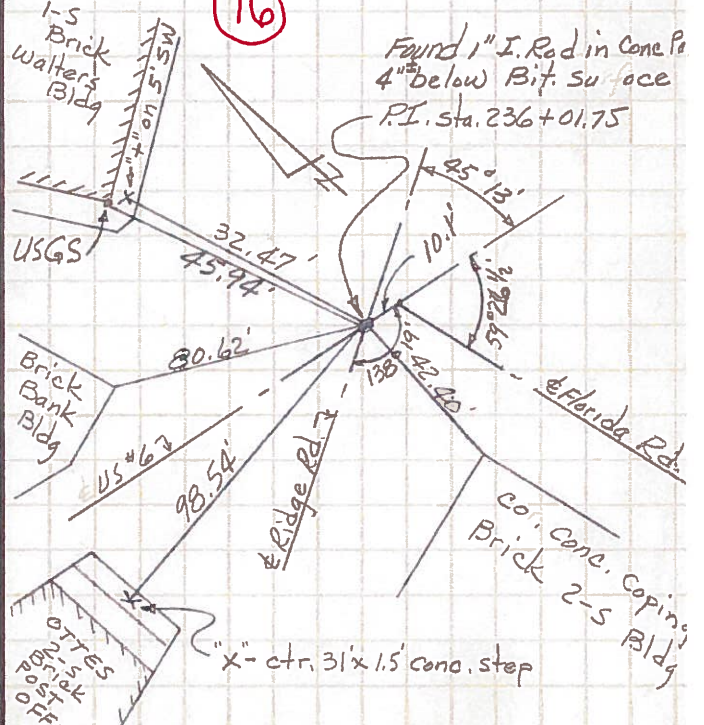
P.I. sta. 236 + 01.75

1-S Brick Walters Bldg

USGS

Brick Bank Bldg

OTTES Brick Bldg



PERSONNEL TITLE PERSONNEL TITLE

Red Beach
Armbruster & Son
Knappe
Mohler

COUNTY Henry DATE Nov. '63

S. R. US #6 WEATHER _____

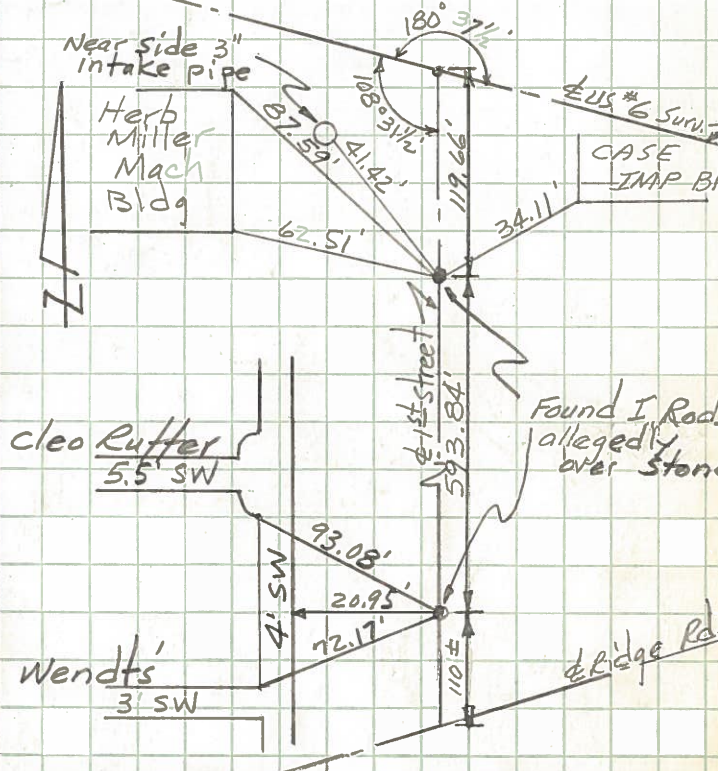
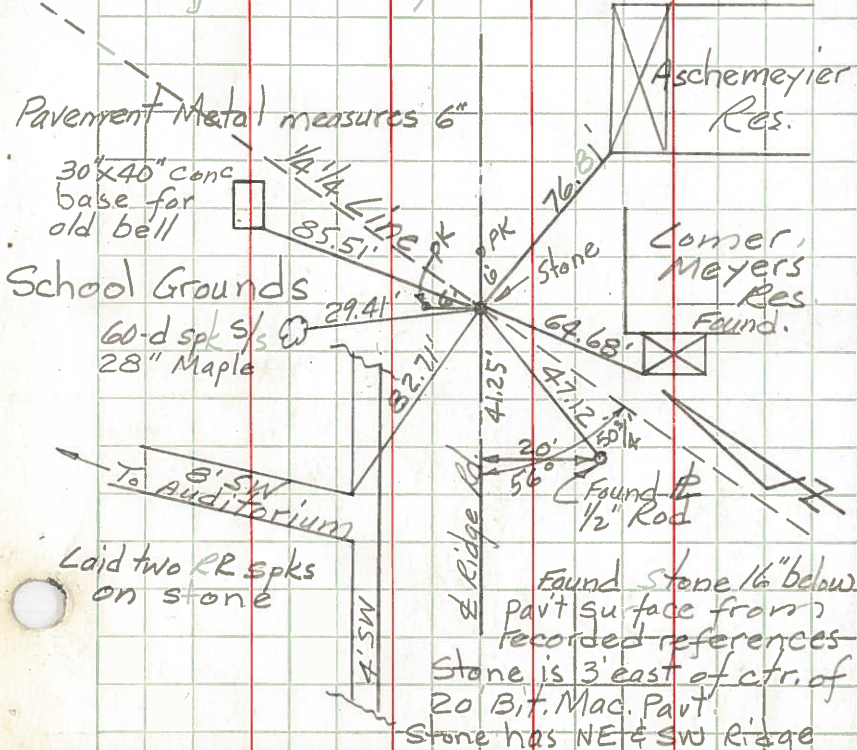
SEC. Ridgeville Twp. TEMP. _____

CONTROL POINTS

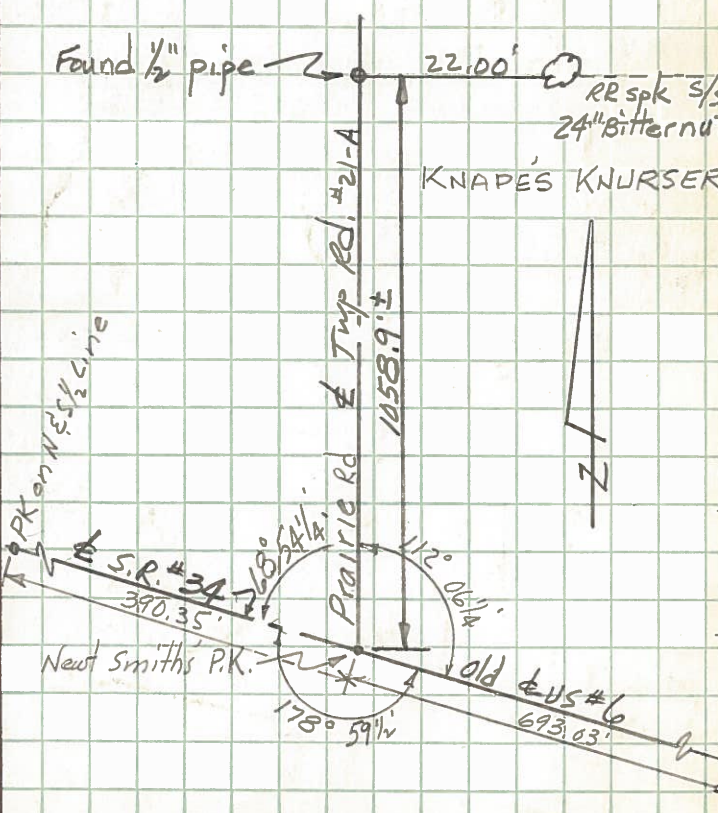
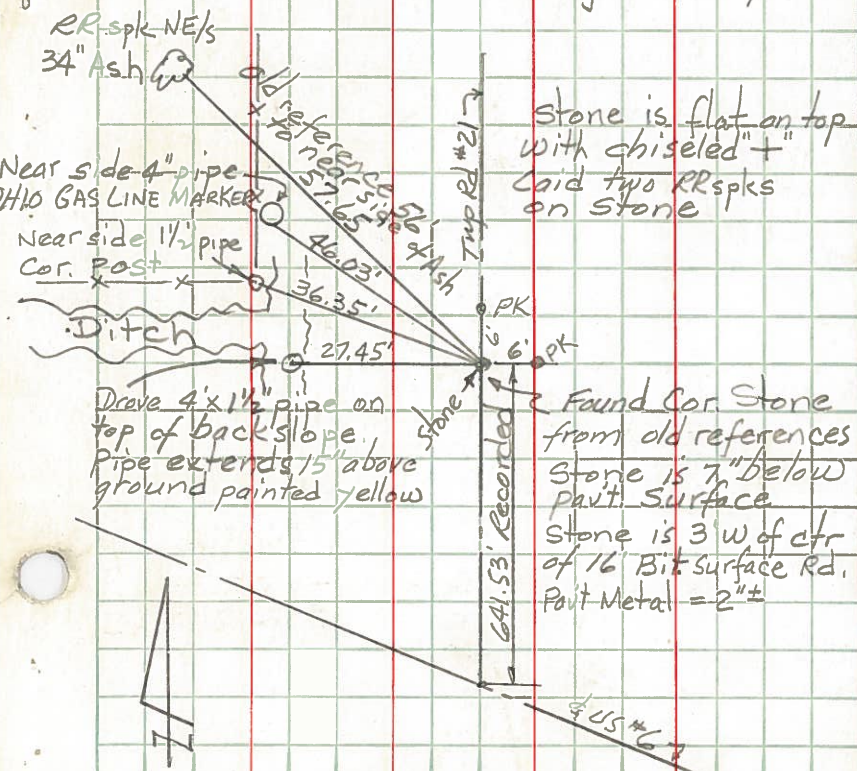
DESCRIPTION LEFT CENTER LINE RIGHT JOB NO.

Intersection of Ridge Road with the west line of the E 1/2, NE 1/4, Sec. 35, Ridgeville Twp.

1st Street & (Ridgeville Corners)



NW Cor, Sec. 35, Ridgeville Twp.

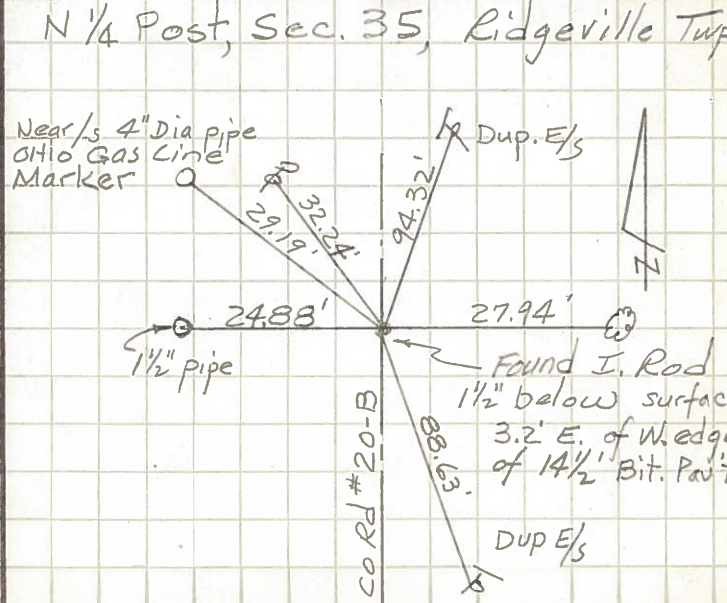
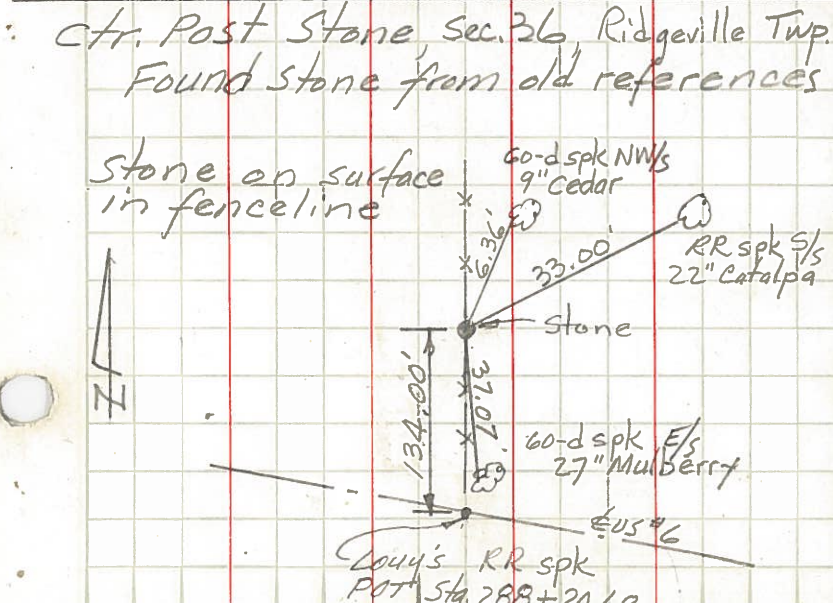
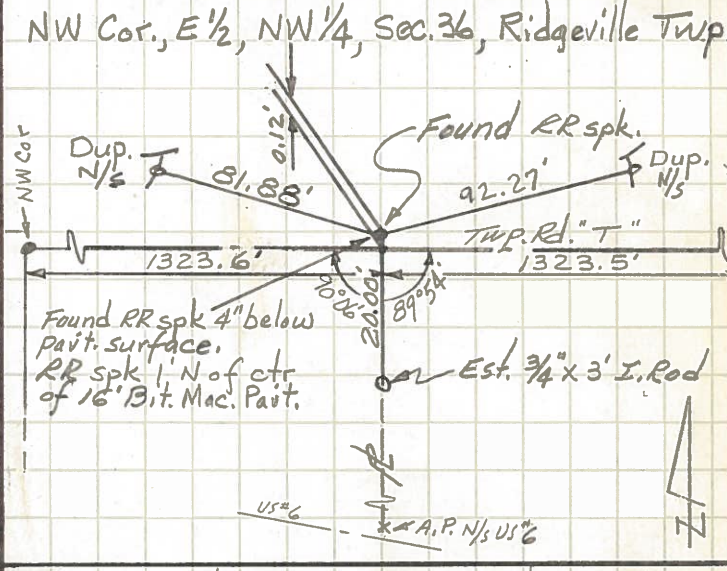
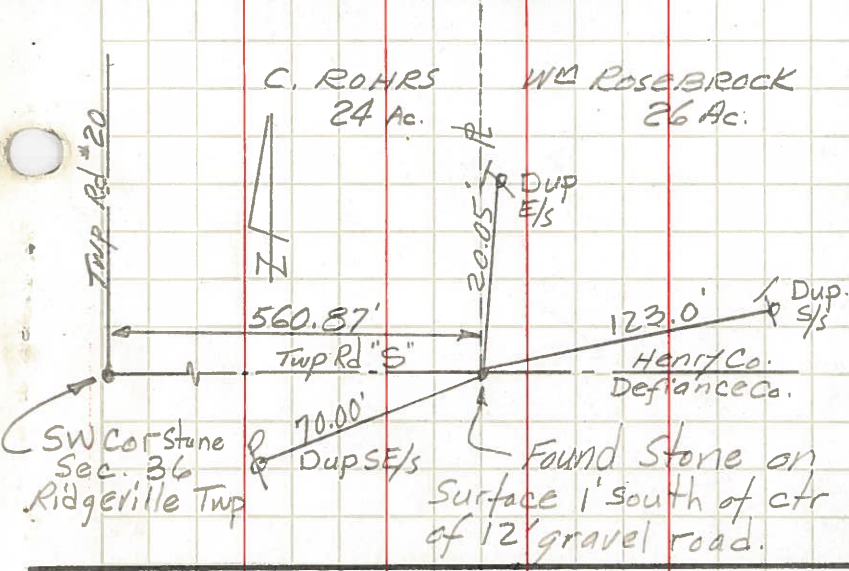
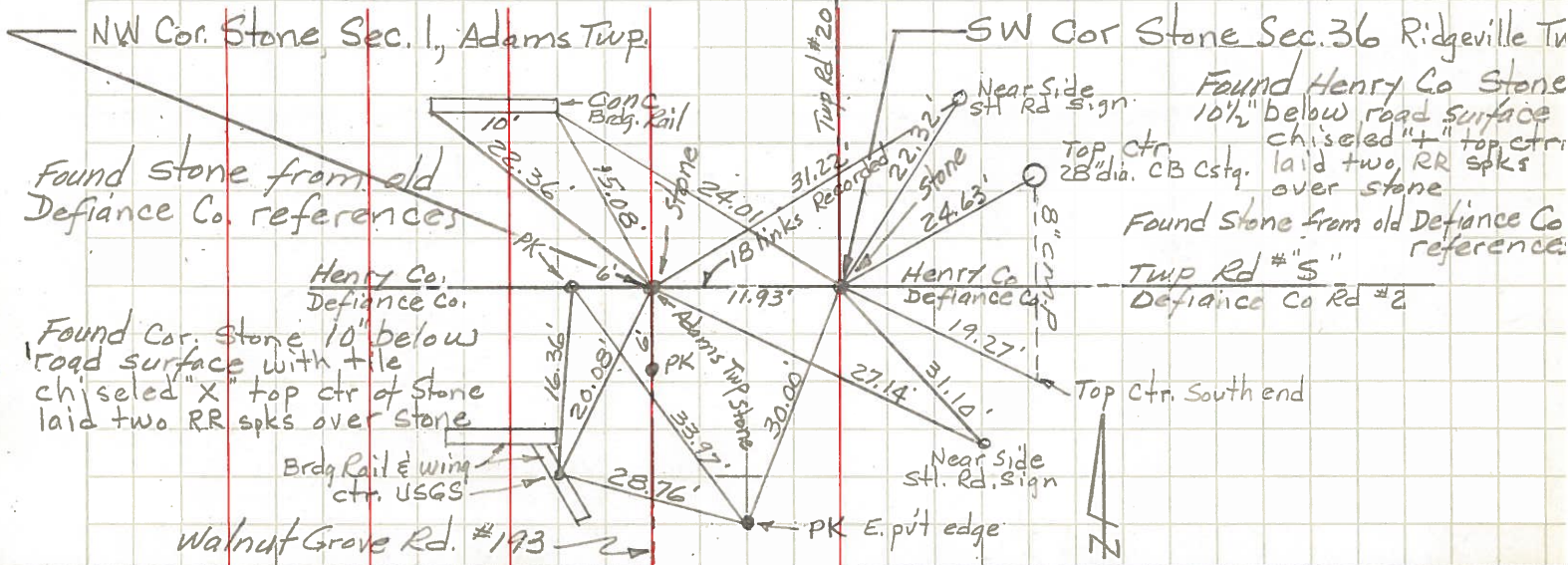


PERSONNEL TITLE PERSONNEL TITLE
 Red Beach _____
 Armbruster _____
 Knappe _____
 Mohler _____

COUNTY Henry DATE Nov. 1963
 S. R. US #6 WEATHER _____
 SEC. _____ TEMP. _____

CONTROL POINTS

DESCRIPTION LEFT CENTER LINE RIGHT JOB NO.



PERSONNEL TITLE PERSONNEL TITLE

Knape
Mohler
Germann

COUNTY Henry

DATE August 10, 1966

S. R. U.S. 6

WEATHER Clear

SEC. _____

TEMP. 80°

DESCRIPTION

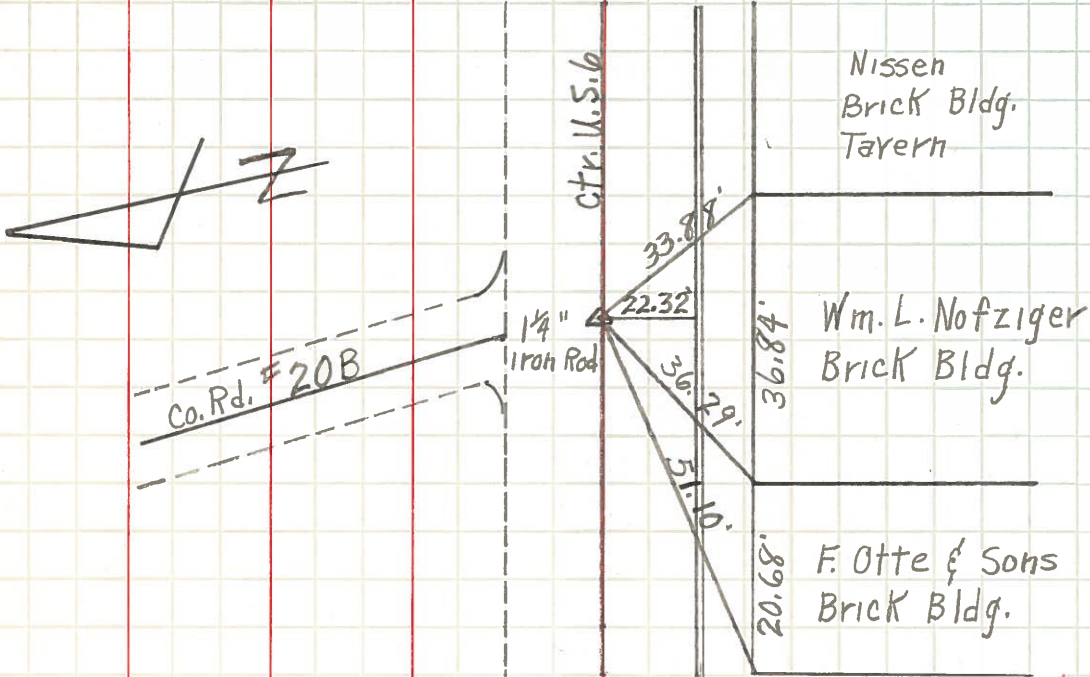
LEFT

CENTER LINE

RIGHT

JOB NO. _____

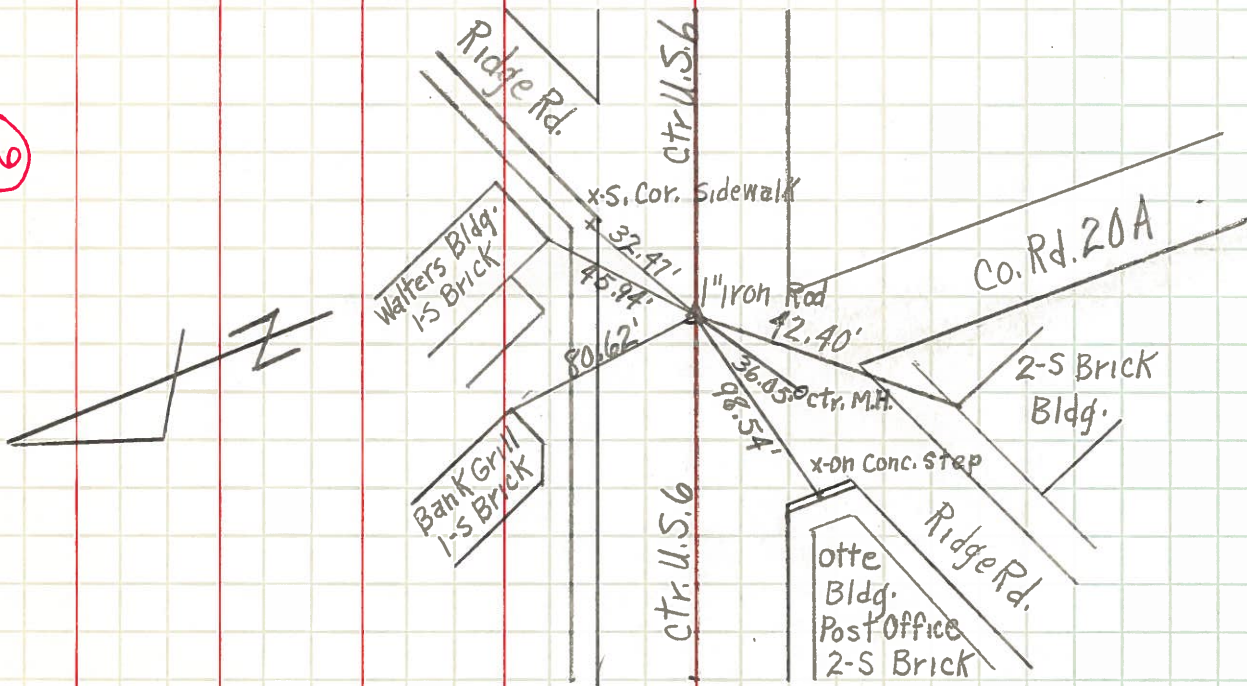
15



Set R.R. SpK 10/24/60

Intersection Co. Rd 20B and U.S. 6 in Ridgerville Corners, Ohio

16



Intersection Ridge Rd. and U.S. 6 in Ridgerville Corners, Ohio

Set Small Bolt 10/24/60