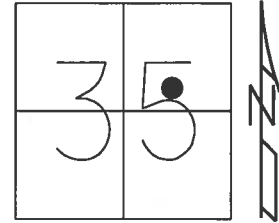


O.D.O.T. DISTRICT 2 SURVEY OFFICE (USE ONLY)

PERSONNEL \_\_\_\_\_ REFERENCE NO. 18 SHEET 9 OF 37

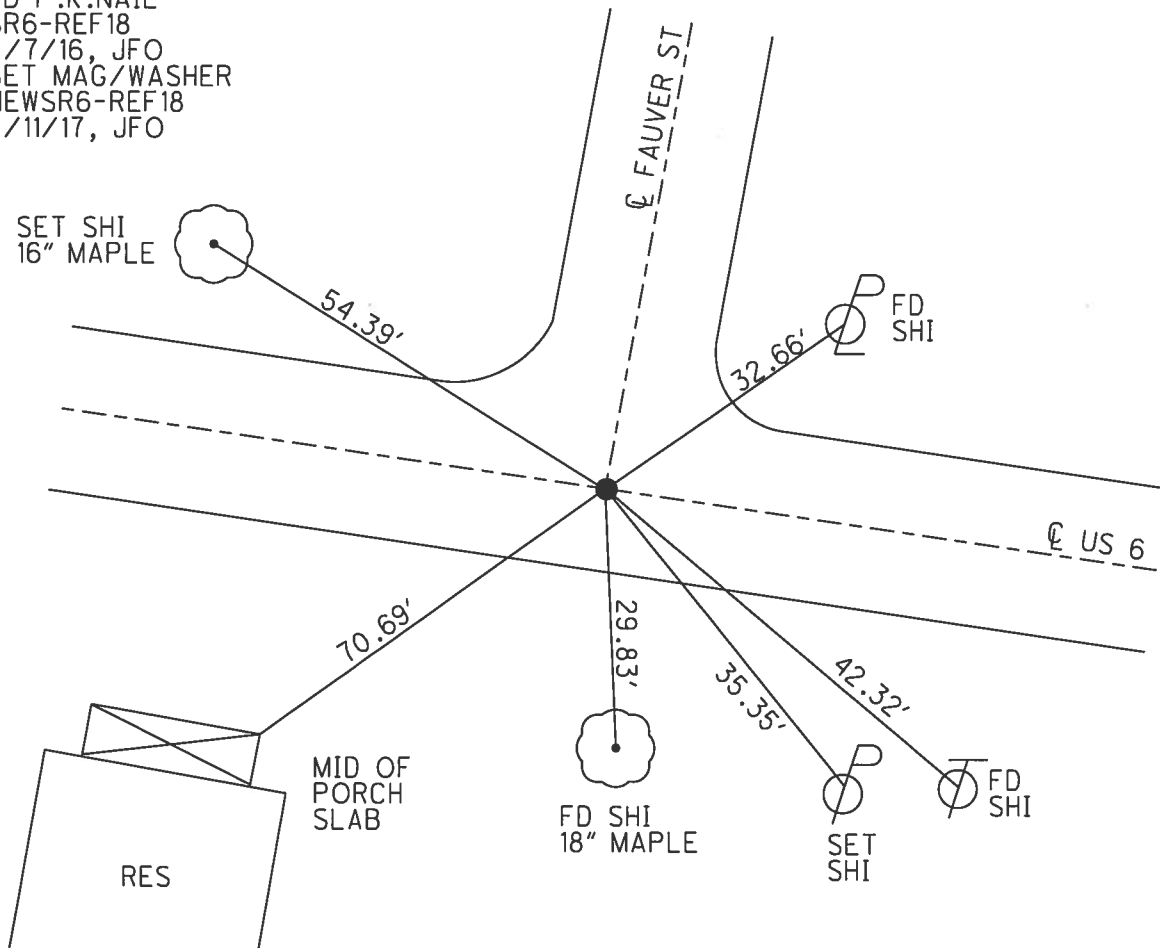
NOTES POORE \_\_\_\_\_ DATE 5/17/17 ROUTE US 6  
 H.C. LEU \_\_\_\_\_ WEATHER CLOUDY COUNTY HENRY  
 R.C. CARSON \_\_\_\_\_ TEMP. 76° TOWNSHIP RIDGEVILLE  
 \_\_\_\_\_ HOMAN \_\_\_\_\_ SECTION 35  
 \_\_\_\_\_ RHOADES \_\_\_\_\_ T 6 N R 5 E

TYPE MONUMENT P.K.NAIK  
 ON SURFACE - ~~BELOW~~ ON \_\_\_\_\_  
 LEFT - ℄ PAV'T - ~~RIGHT~~ 0.5'  
12.4' TO RT EDGE PAVEMENT  
 S.L.M. 245+89.75



Grid: Northing: 649921.365 Easting: 1487809.384

RECORD: P.O.T.  
 STA. 245+70.35  
 FD P.K.NAIL  
 8/30/00, MB  
 SET P.K./WASHER  
 10/23/00, MDB  
 FD P.K.NAIL  
 SR6-REF18  
 3/7/16, JFO  
 SET MAG/WASHER  
 NEWSR6-REF18  
 9/11/17, JFO



# O.D.O.T. DISTRICT 2 SURVEY OFFICE

PERSONNEL \_\_\_\_\_

REFERENCE NO. 18

SHEET 8 OF 35

NOTES BARNHISEL

H.C. MOSEK

DATE 8-30-00

ROUTE US 6

R.C. CANTERBURY

WEATHER SUNNY

COUNTY HENRY

TEMP. +85°

TOWNSHIP RIDGEVILLE

SECTION 35

T 6 N R 5 E

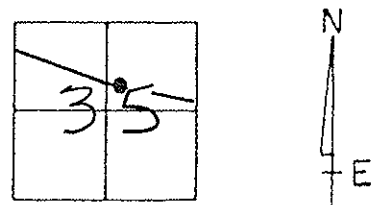
TYPE MONUMENT PK NAIL

~~ON SURFACE~~ - BELOW 4"

LEFT - 0 PAV'T. - RIGHT 0.5'

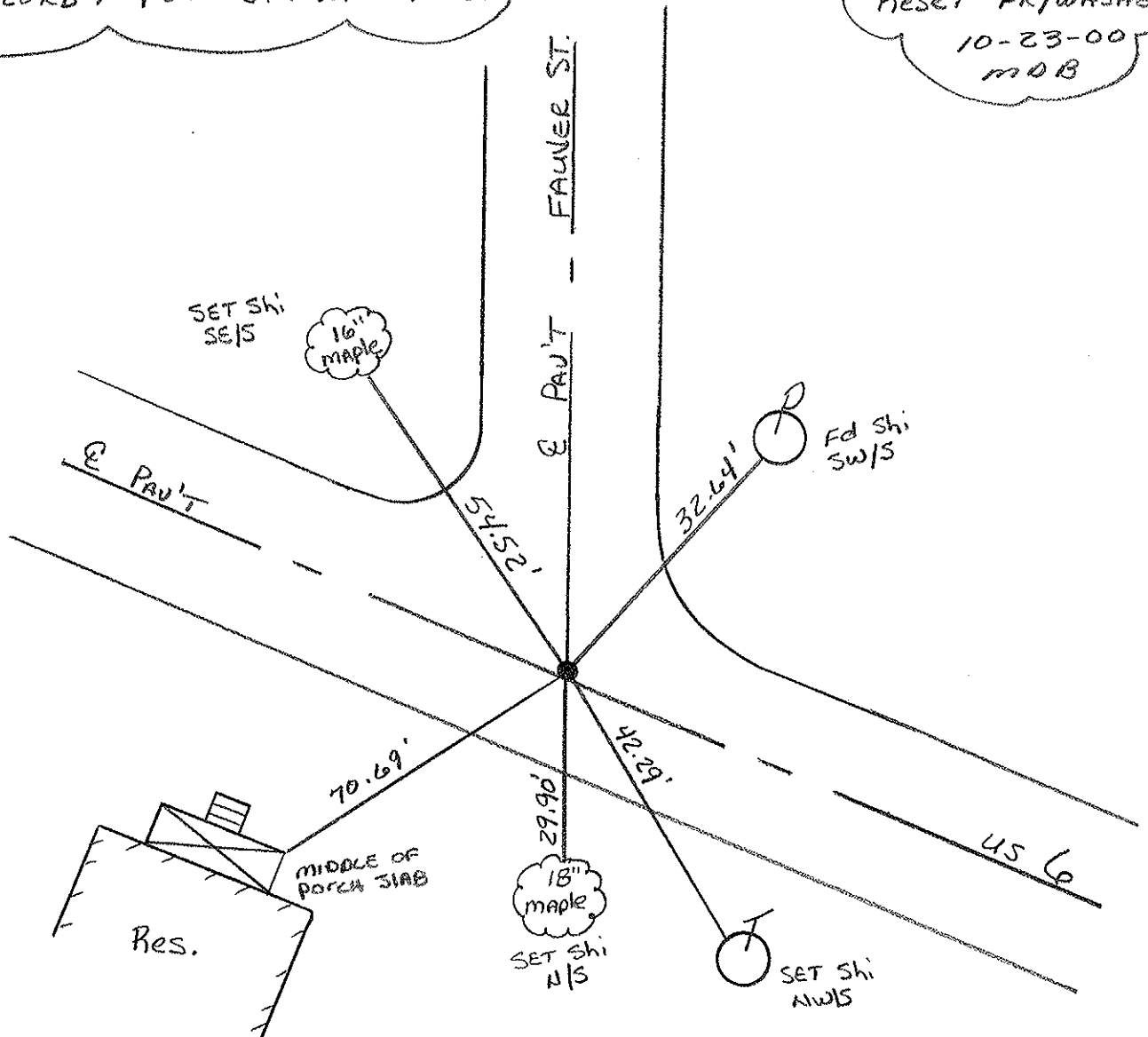
12.4' TO RT EDGE PAVEMENT

S.L.M. 245+43 ON E NORTH



RECORD: POT = STA: 245+70.35

RESET PK/WASHER  
10-23-00  
MOB



PERSONNEL TITLE PERSONNEL TITLE COUNTY HENRY DATE 21/23 Mar. 77  
 Red Beach W. Knape S. R. US 6 WEATHER

SEC. Ridgeville TEMP. DESCRIPTION CONTROL POINTS JOB NO.

