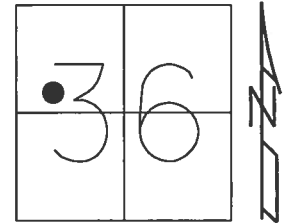


O.D.O.T. DISTRICT 2 SURVEY OFFICE (USE ONLY)

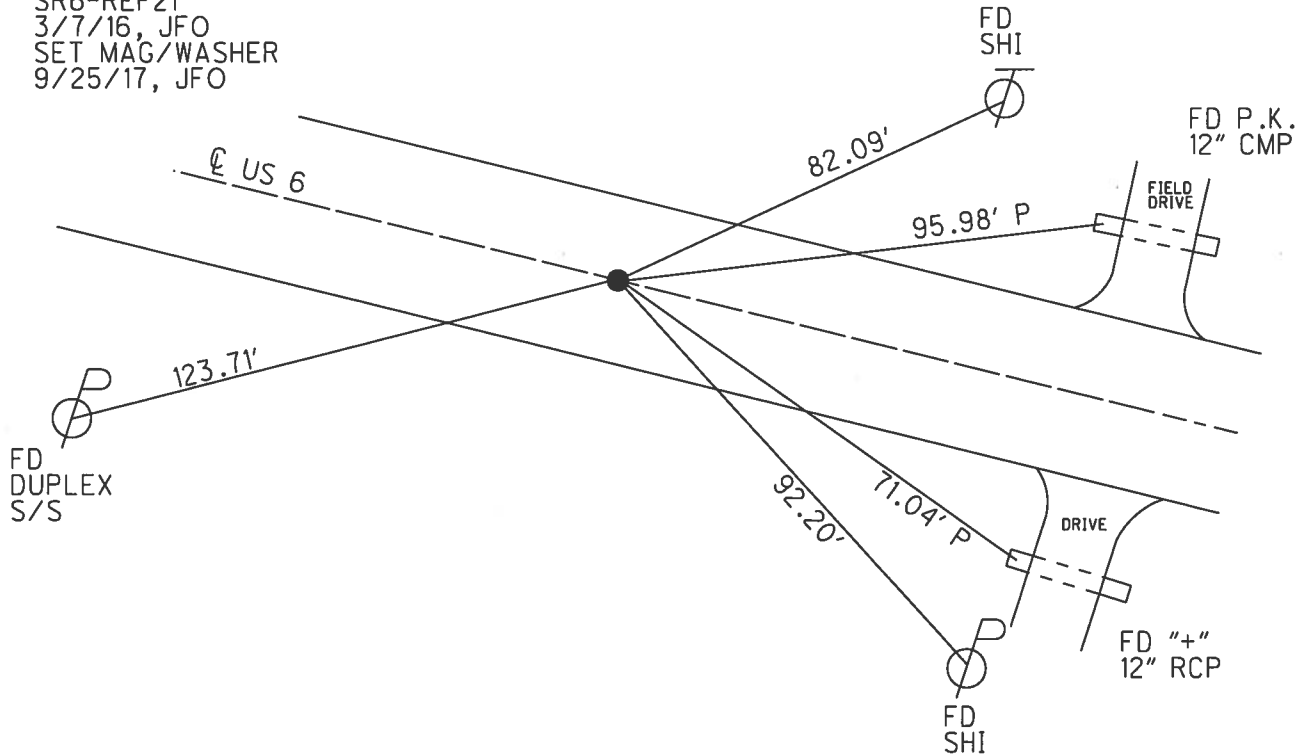
PERSONNEL	REFERENCE NO.	<u>21</u>	SHEET	<u>12</u>	OF	<u>37</u>
NOTES	POORE	DATE	<u>5/17/17</u>	ROUTE	<u>US 6</u>	
H.C.	<u>LEU</u>	WEATHER	<u>CLOUDY</u>	COUNTY	<u>HENRY</u>	
R.C.	<u>CARSON</u>	TEMP.	<u>75°</u>	TOWNSHIP	<u>RIDGEVILLE</u>	
	<u>HOMAN</u>			SECTION	<u>36</u>	
	<u>RHOADES</u>			T	<u>6</u>	R
					<u>5</u>	<u>E</u>

TYPE MONUMENT MAG/WASHER  
 ON SURFACE - ~~BELOW~~ ON  
 LEFT - ☉ PAV'T - ~~RIGHT~~ 1"  
11.1' TO LT EDGE PAVEMENT  
 S.L.M. 270+42.25



Grid: Northing: 649362.103 Easting: 1490197.130

RECORD: P.I.  
 STA. 270+22.85  
 $\Delta = 2^\circ 16' RT$   
 FD LG.R.R.SPIKE  
 4" DOWN  
 8/31/00, MB  
 SET P.K./WASHER  
 10/23/00, MDB  
 SET MAG/WASHER  
 SR6-REF21  
 3/7/16, JFO  
 SET MAG/WASHER  
 9/25/17, JFO



# O.D.O.T. DISTRICT 2 SURVEY OFFICE

PERSONNEL

REFERENCE NO. 21

SHEET 11 OF 35

NOTES BARNHISEL

H.C. MOSEK

R.C. CANTERBURY

HUSS F

DATE 8-31-00

WEATHER SUNNY

TEMP. +75°

ROUTE US 6

COUNTY HENRY

TOWNSHIP RIDGEVILLE

SECTION 36

T. 6 N R. 5 E

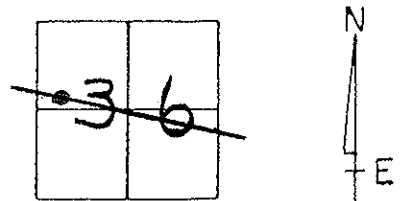
TYPE MONUMENT Cg. RR. Spk.

ON SURFACE - BELOW 4"

LEFT - & PAV'T. - RIGHT 1.0'

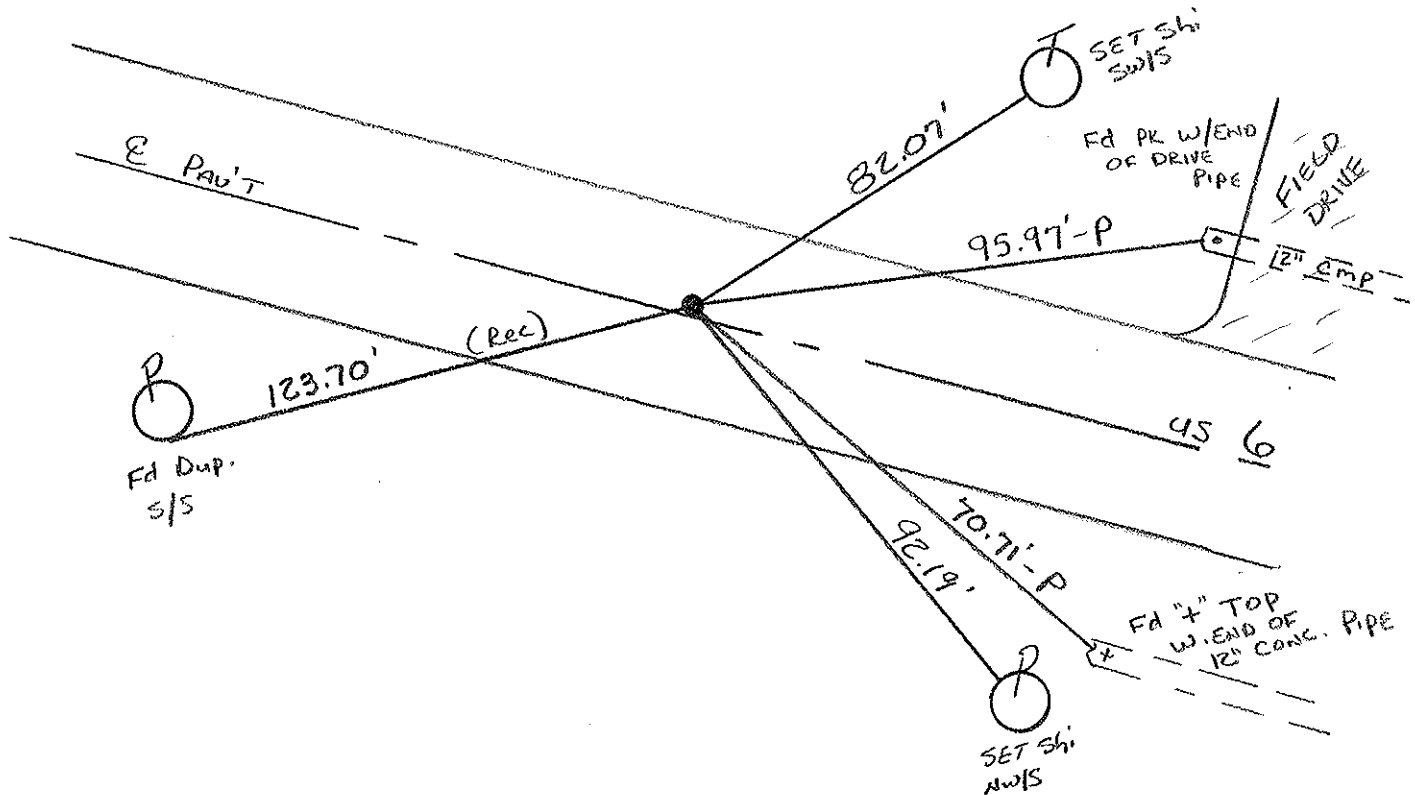
11.1' TO LT. EDGE PAVEMENT

S.L.M. 269+86



RECORD: PI = Sta: 270+22.85  
 $\Delta = 2^{\circ} - 16' \text{ RT}$

RESET PK/WASHER  
 10-23-00  
 M.D.B.



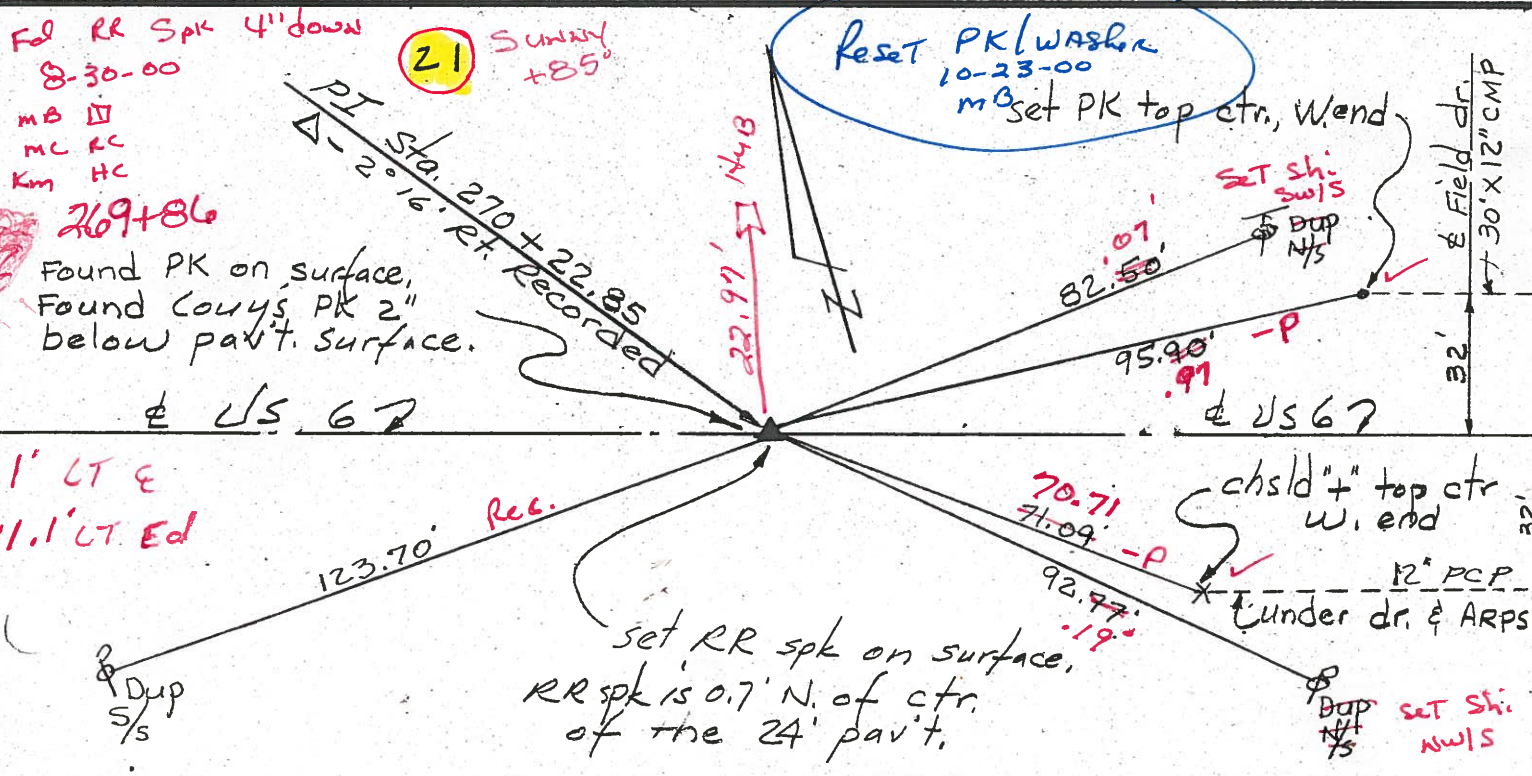
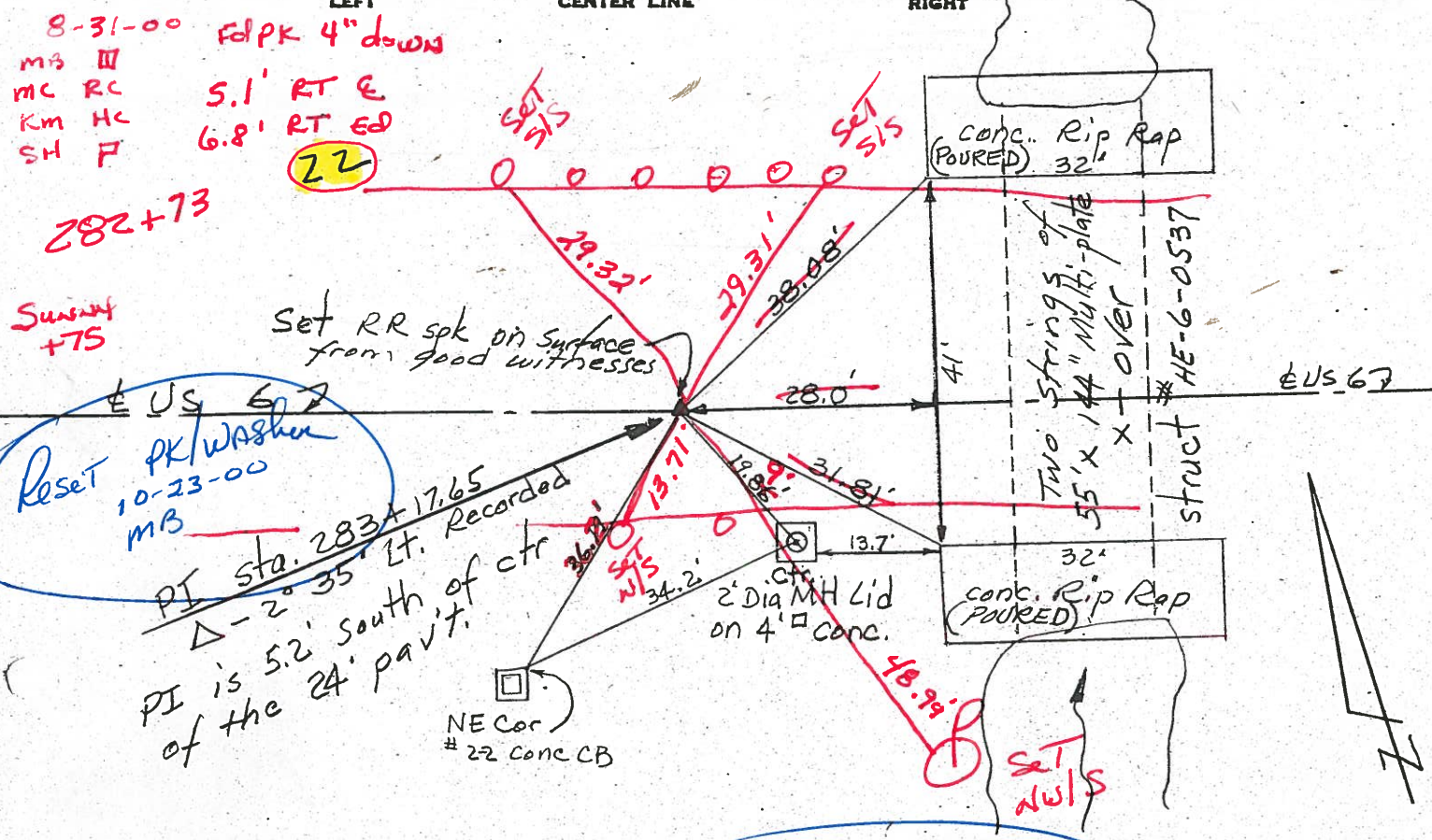
PERSONNEL TITLE PERSONNEL TITLE  
Red Beach

COUNTY HENRY DATE 24 Mar 77

S. R. US 6 WEATHER

SEC. Ridgville Twp TEMP.

DESCRIPTION CONTROL POINTS JOB NO.



PERSONNEL TITLE PERSONNEL TITLE  
 Red Beach /  
 Armbruster  
 Knappe  
 Mohler

COUNTY Henry DATE Nov. '63  
 S. R. US #6 WEATHER  
 SEC. Ridgerville Twp. TEMP.

DESCRIPTION CONTROL POINTS JOB NO.

