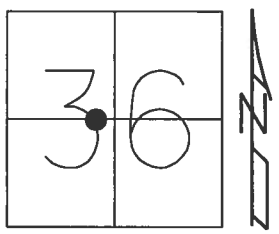


O.D.O.T. DISTRICT 2 SURVEY OFFICE (USE ONLY)

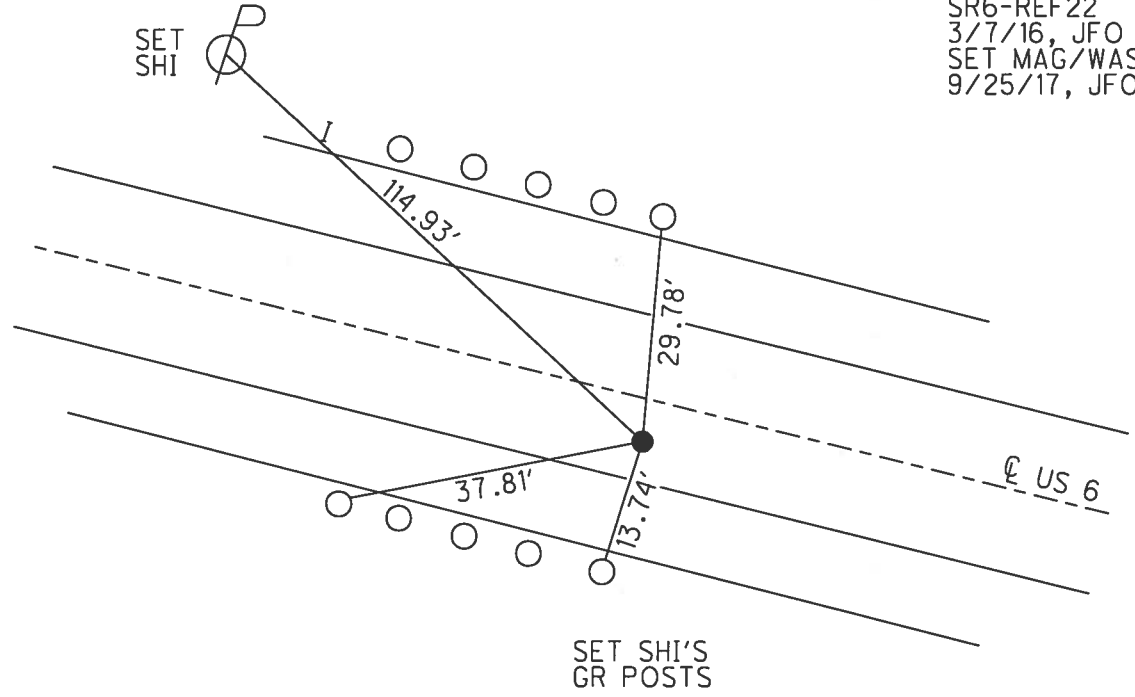
PERSONNEL _____ REFERENCE NO. 22 SHEET 13 OF 37
 NOTES POORE DATE 5/17/17 ROUTE US 6
 H.C. LEU WEATHER CLOUDY COUNTY HENRY
 R.C. CARSON TEMP. 77° TOWNSHIP RIDGEVILLE
HOMAN
RHOADES SECTION 36
T 6 N R 5 E

TYPE MONUMENT MAG/WASHER
 ON SURFACE - ~~BELOW~~ ON
~~LEFT~~ - ℄ PAV'T - RIGHT 5.5'
6.8' TO RT EDGE PAVEMENT
 S.L.M. 283+36.59



Grid: Northing: 649015.058 Easting: 1491444.075

RECORD: P.I.
 STA. 283+17.65
 $\Delta = 2^\circ 35' \text{ LT}$
 FD P.K.NAIL
 4" DOWN
 8/31/00, MB
 SET P.K./WASHER
 10/23/00, MDB
 SET MAG/WASHER
 SR6-REF22
 3/7/16, JFO
 SET MAG/WASHER
 9/25/17, JFO



O.D.O.T. DISTRICT 2 SURVEY OFFICE

PERSONNEL

REFERENCE NO. 22

SHEET 12 OF 35

NOTES BARNHISEL

H.C. MOSEK

R.C. CANTERBURY

HUSS F

DATE 8-31-00

WEATHER SUNNY

TEMP. +75°

ROUTE US 6

COUNTY HENRY

TOWNSHIP RIDGEVILLE

SECTION 36

T 4 N R 5 E

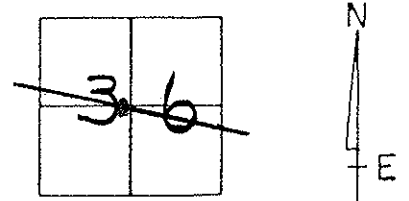
TYPE MONUMENT PK NAIL

ON SURFACE - BELOW 4"

LEFT - & PAV'T. - RIGHT 5.1'

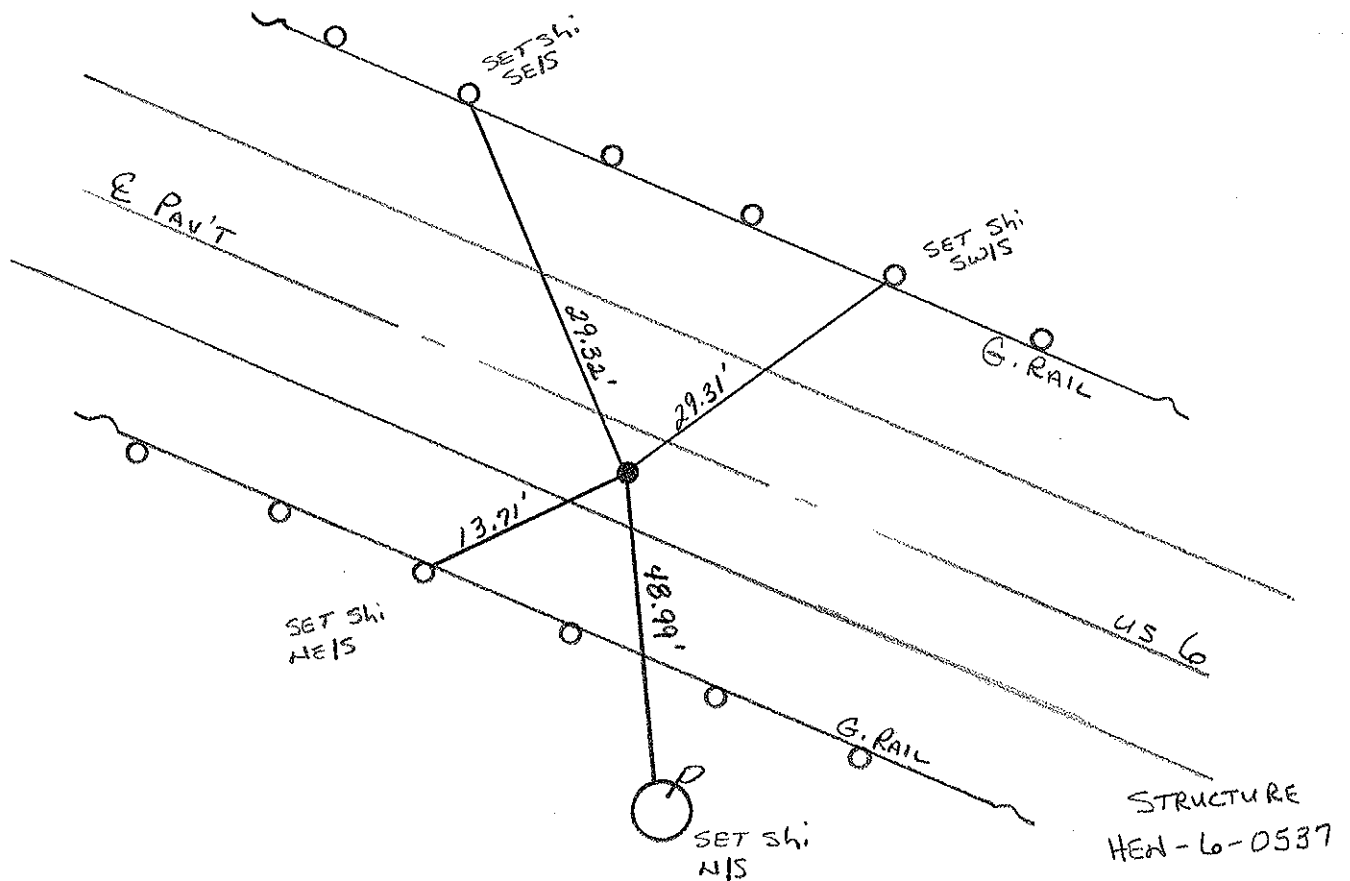
6.8' TO RT EDGE PAVEMENT

S.L.M. 282+73



RECORD: PI = Sta: 283+17.65
 $\Delta = 20.35'$ LT

RESET PK/WASHER
 10-23-00
 MDB



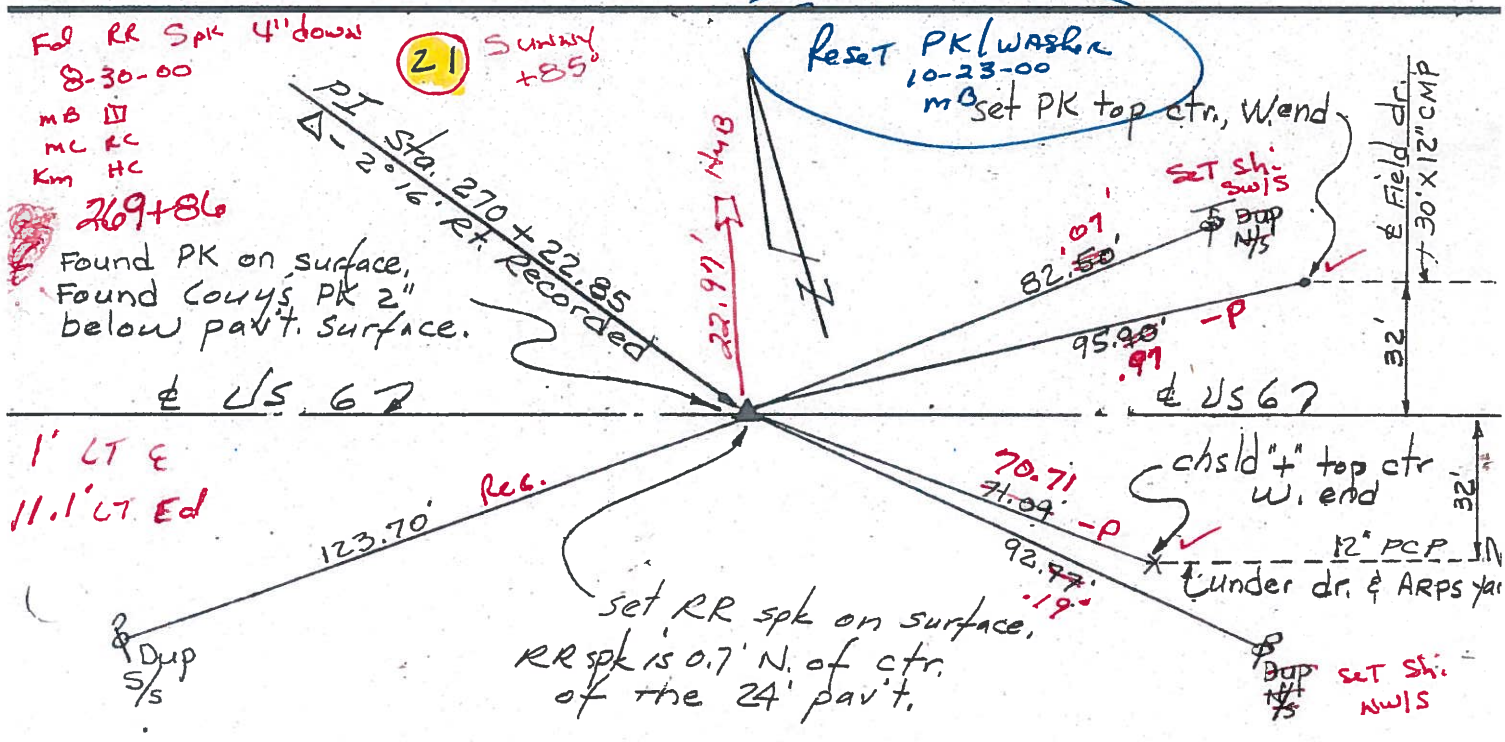
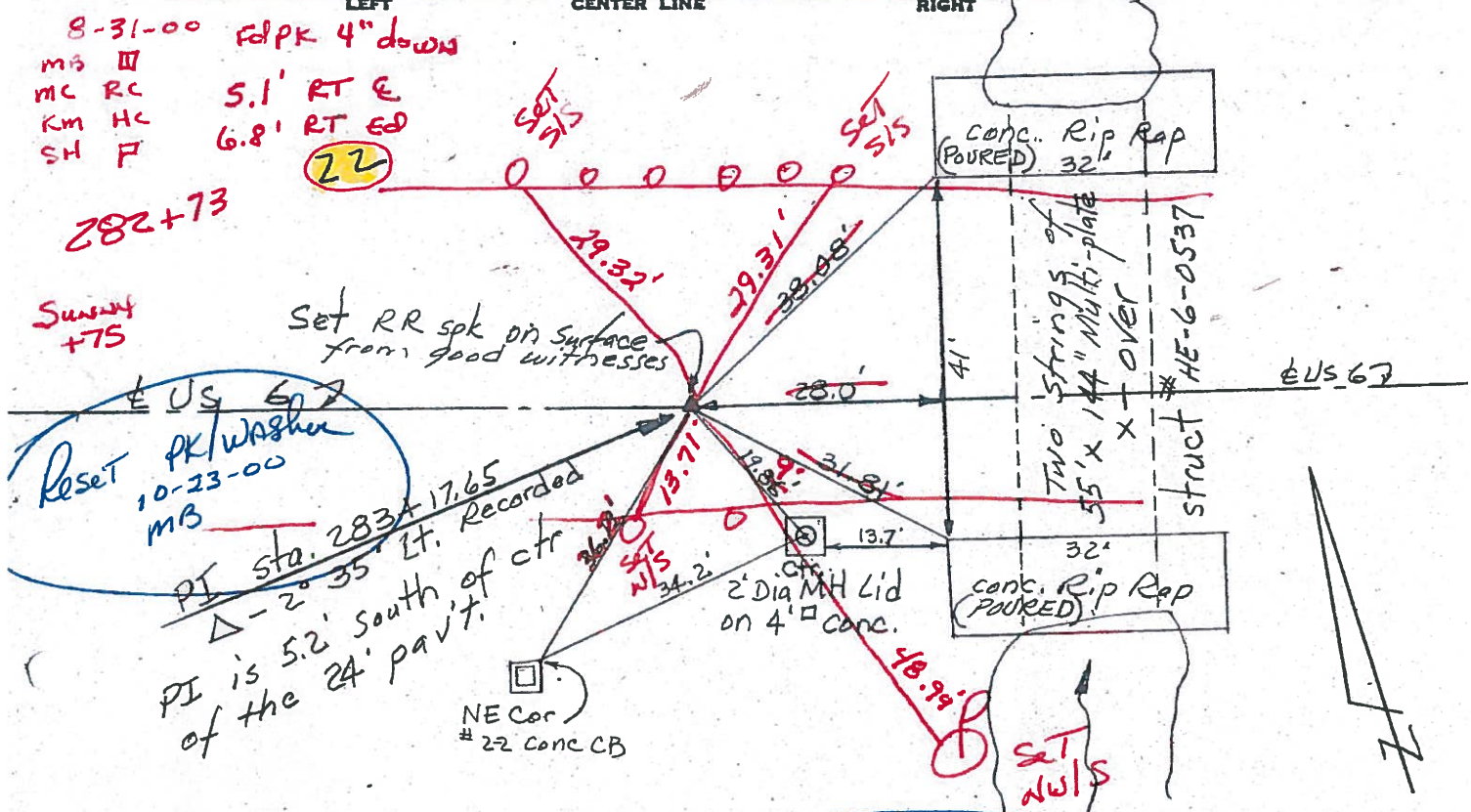
PERSONNEL TITLE PERSONNEL TITLE
Red Beach

COUNTY HENRY DATE 24 Mar 77

S. R. US 6 WEATHER

SEC Ridgeville Twp TEMP

DESCRIPTION CONTROL POINTS JOB NO



PERSONNEL TITLE PERSONNEL TITLE
 Red Beach, _____
 Armbruster _____
 Knape _____
 Mohler _____

COUNTY Henry DATE Nov. '63

S. R. US #6 WEATHER _____

SEC. Ridgeville Twp. TEMP. _____

DESCRIPTION CONTROL POINTS JOB NO.
 LEFT CENTER LINE RIGHT

