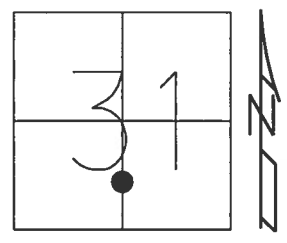


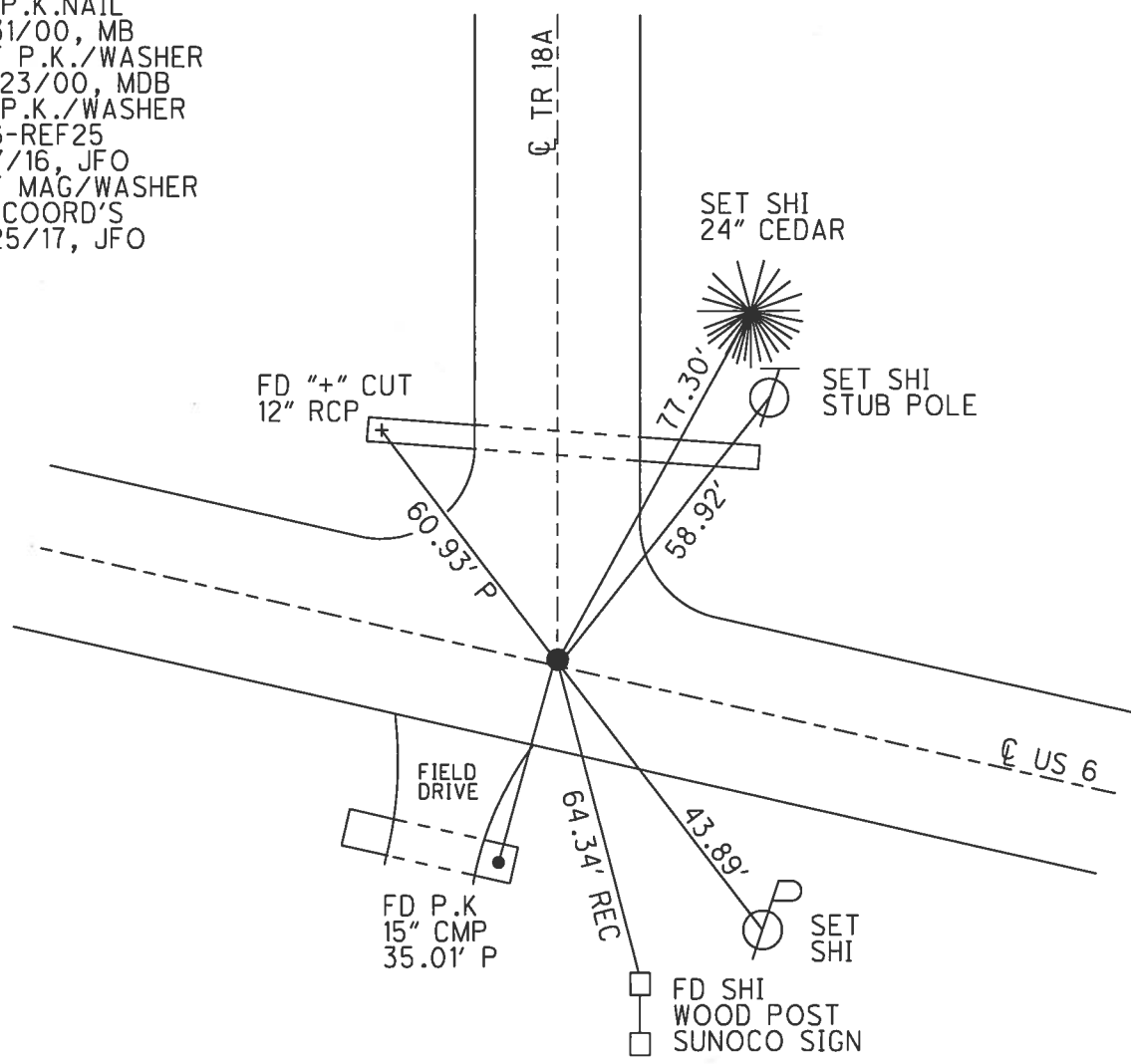
O.D.O.T. DISTRICT 2 SURVEY OFFICE (USE ONLY)

| | | | | | | |
|-----------|---------------|---------|---------|----------|---------|----|
| PERSONNEL | REFERENCE NO. | 25 | SHEET | 16 | OF | 37 |
| NOTES | POORE | DATE | 5/17/17 | ROUTE | US 6 | |
| H.C. | LEU | WEATHER | WINDY | COUNTY | HENRY | |
| R.C. | CARSON | TEMP. | 81° | TOWNSHIP | FREEDOM | |
| | HOMAN | | | SECTION | 31 | |
| | RHOADES | | | T | 6 | N |
| | | | | R | 6 | E |

TYPE MONUMENT P.K./WASHER
 ON SURFACE - ~~BELOW~~ ON
 LEFT - ☑ PAV'T - ~~RIGHT~~ 0.5'
12.5' TO RT EDGE PAVEMENT
 S.L.M. 335+80.89
 Grid: Northing: 647839.006 Easting: 1496554.809



RECORD: P.I.
 STA. 335+63.91
 $\Delta = 0^\circ 12' 30''$
 FD P.K.NAIL
 8/31/00, MB
 SET P.K./WASHER
 10/23/00, MDB
 FD P.K./WASHER
 SR6-REF25
 3/7/16, JFO
 SET MAG/WASHER
 BY COORD'S
 9/25/17, JFO



O.D.O.T. DISTRICT 2 SURVEY OFFICE

PERSONNEL

REFERENCE NO. 25

SHEET 15 OF 35

NOTES BARNWISER

H.C. MOSEK

DATE 8-31-00

ROUTE US 6

R.C. CANTERBURY

WEATHER SUNNY

COUNTY HENRY

HUSS P

TEMP. +75°

TOWNSHIP FREEDOM

SECTION 31

T 6 N R 6 E

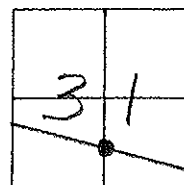
TYPE MONUMENT PK NAIL

ON SURFACE - BELOW yes

LEFT - ℄ PAV'T. - RIGHT 0.5'

12.5' TO RT EDGE PAVEMENT

S.L.M. 334+85



RECORD : PI = STA. 335+63.91
 $\Delta = 0^\circ - 12' - 30''$ RT

Reset PK/WASHER
 10-23-00
 M D B

