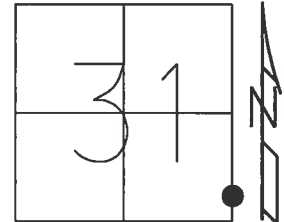


O.D.O.T. DISTRICT 2 SURVEY OFFICE (USE ONLY)

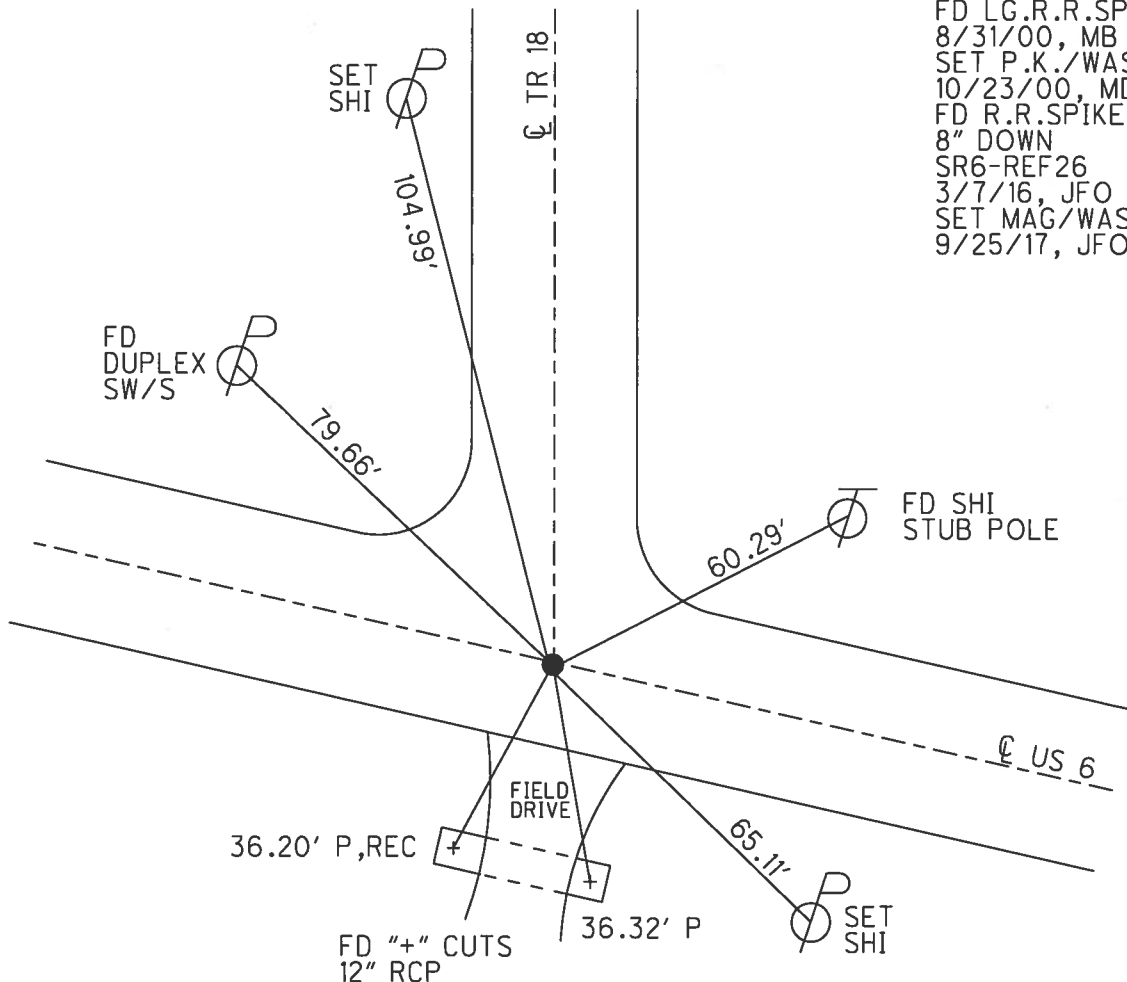
PERSONNEL _____ REFERENCE NO. 26 SHEET 17 OF 37
 NOTES POORE DATE 5/17/17 ROUTE US 6
 H.C. LEU WEATHER WINDY COUNTY HENRY
 R.C. CARSON TEMP. 83° TOWNSHIP FREEDOM
 HOMAN SECTION 31
 RHOADES T 6 N R 6 E

TYPE MONUMENT R.R.SPIKE
~~ON SURFACE~~ - BELOW 8"
 LEFT - ☉ PAV'T - RIGHT ON
12' TO RT EDGE PAVEMENT
 S.L.M. 362+99.32

Grid: Northing: 647219.948 Easting: 1499201.820



RECORD: P.I.
 STA. 362+81.78
 $\Delta = 0^\circ 07' 30''$ RT
 FD LG.R.R.SPIKE
 8/31/00, MB
 SET P.K./WASHER
 10/23/00, MDB
 FD R.R.SPIKE
 8" DOWN
 SR6-REF26
 3/7/16, JFO
 SET MAG/WASHER
 9/25/17, JFO



O.D.O.T. DISTRICT 2 SURVEY OFFICE

PERSONNEL

REFERENCE NO. 26

SHEET 16 OF 35

NOTES BARNHISEL

H.C. MOSEK

DATE 8-31-00

ROUTE US 6

R.C. CANTERBURY

WEATHER SUNNY

COUNTY HENRY

HUSS P

TEMP. +75°

TOWNSHIP FREEDOM

SECTION 31

T6 NR 6 E

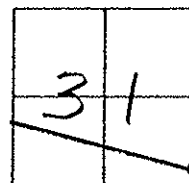
TYPE MONUMENT Lg RR SPIKE

ON SURFACE - BELOW 4"

LEFT - & PAV'T. - RIGHT yes

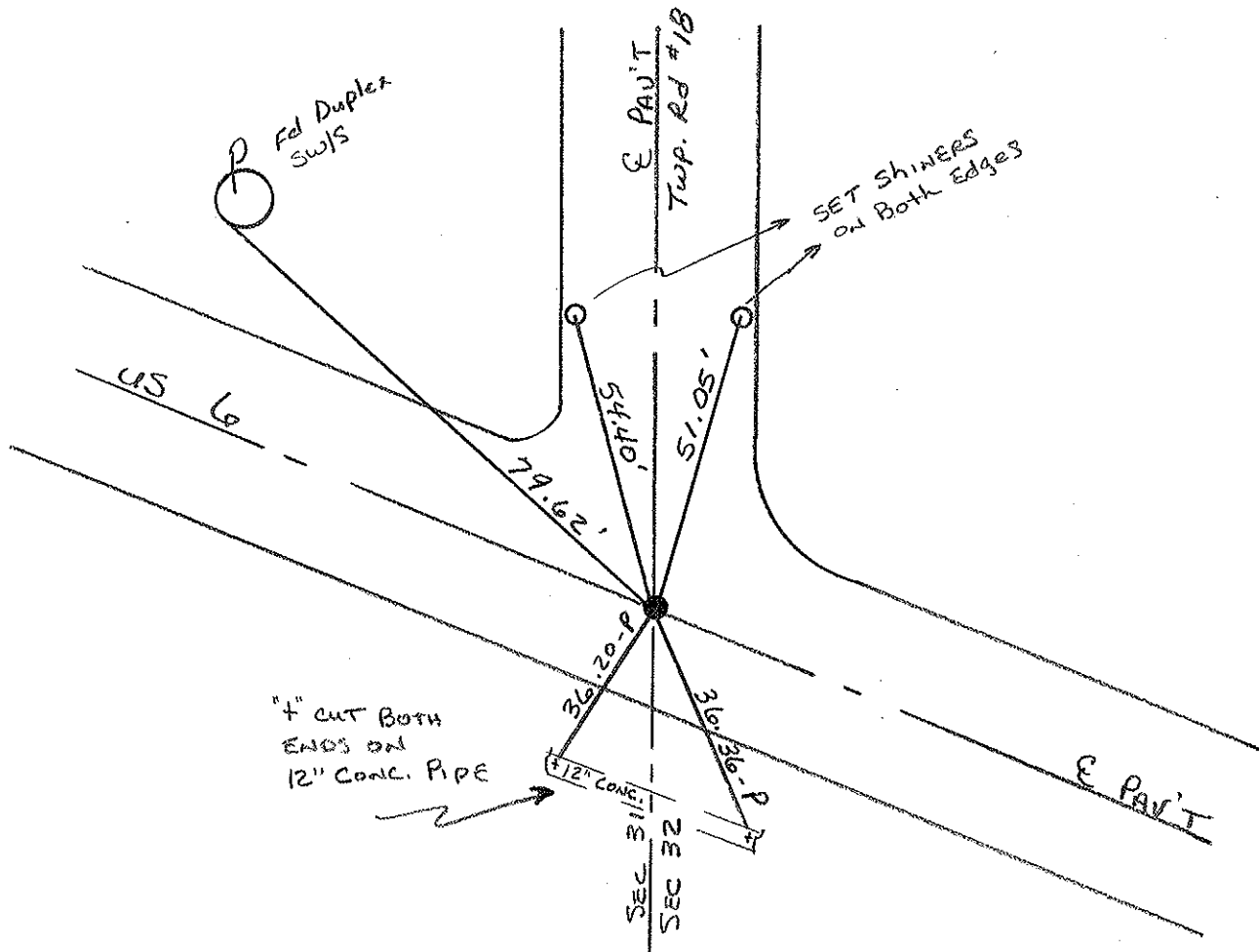
12.0' TO RT EDGE PAVEMENT

S.L.M. 361+96



Record: $PI = Sta. 362+81.78$
 $\Delta = 0^\circ - 07' - 30'' RT$

Reset PK/WASHER
 10-23-00
 M D B



PERSONNEL TITLE PERSONNEL TITLE

COUNTY HENRY

DATE 12 Apr. 1977

Red Beach

W. Knope

S. R. US 6

WEATHER

SEC. FREEDOM TWP

TEMP

DESCRIPTION

CONTROL POINTS

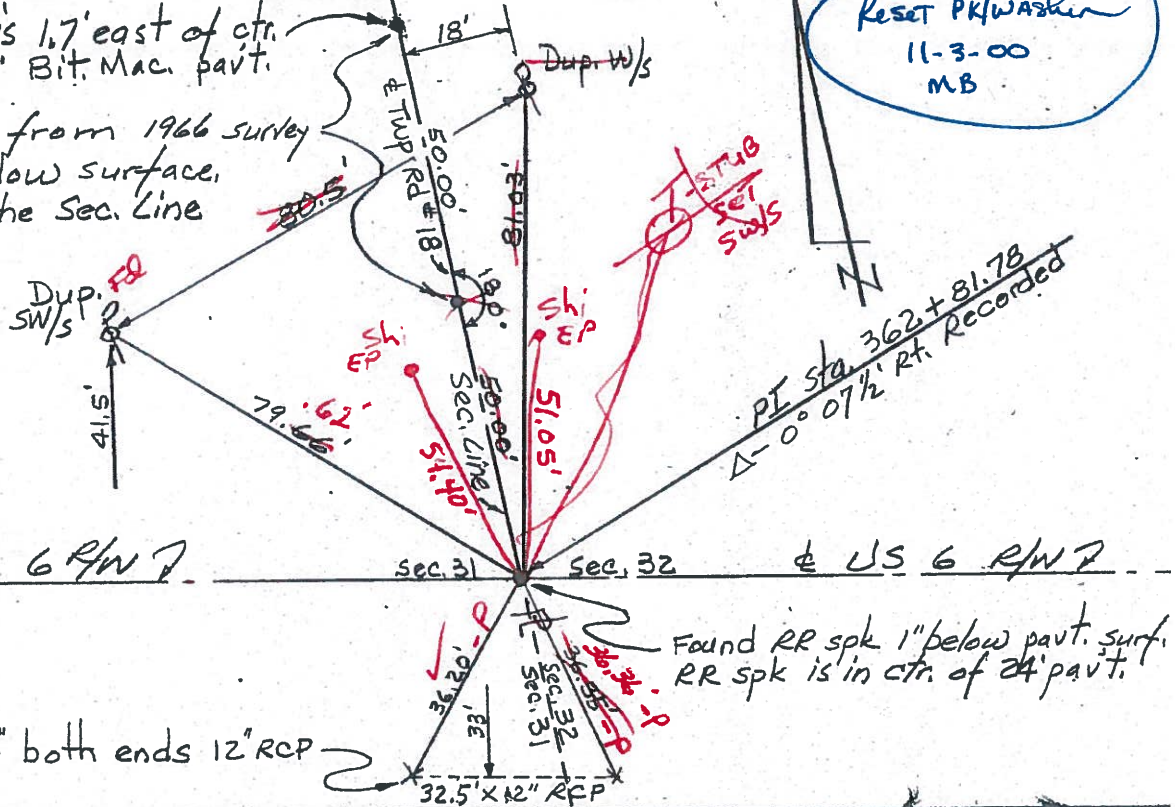
JOB NO.

(26) PK w/shiner is 1.7' east of ctr. of the 14' Bit. Mac. pavt.

Found PK's/wshiners from 1966 survey the PKs are 1" below surface, the PKs are on the Sec. Line

CG RE SPK 26
4" down
ON E
12.0' RT ED
361 + 96

Reset PK/washer
11-3-00
MB



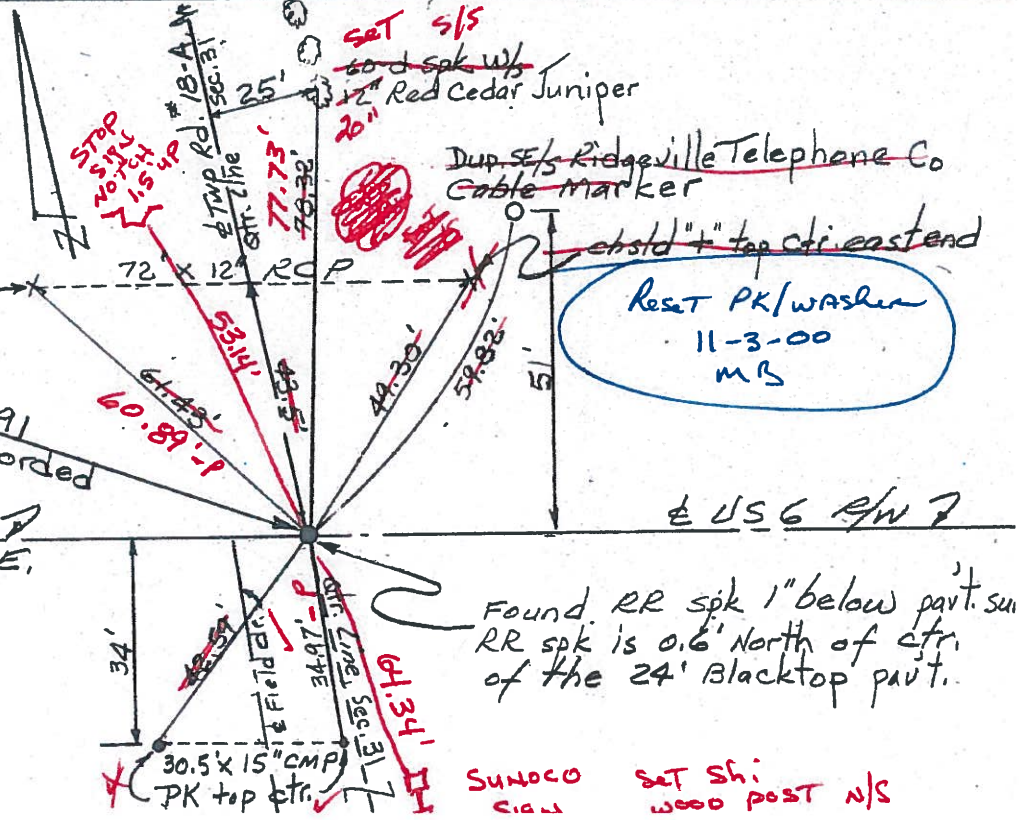
chsl'd "+" both ends 12" RCP

Found RR spk 1" below pavt. surf. RR spk is in ctr. of 24' pavt.

MB - III
MC - RC
SH - F
KMM - HC
8-31-00
Sunny
+85° 25
0.5' LTE
12.5' RTE

(25)
PK @ SURFACE
PI Sta. 335 + 63.91
Δ - 0° 12 1/2' Rt. Recorded
US 6 R/W
S. 78° 40' 20" E.

Reset PK/washer
11-3-00
MB



Found RR spk 1" below pavt. surf. RR spk is 0.6' North of ctr. of the 24' Blacktop pavt.

SUNOCO
CIGAL
Set Sh:
WOOD POST N/S