

O.D.O.T. DISTRICT 2 SURVEY OFFICE (USE ONLY)

PERSONNEL \_\_\_\_\_ REFERENCE NO. 27 SHEET 19 OF 37

NOTES O'DONNELL DATE 10/2/17 ROUTE US 6  
 H.C. LEU WEATHER SUNNY COUNTY HENRY  
 R.C. FARKAS TEMP. 56° TOWNSHIP FREEDOM  
 \_\_\_\_\_ SECTION 32  
 \_\_\_\_\_ T 6 N R 6 E

TYPE MONUMENT MAG/WASHER

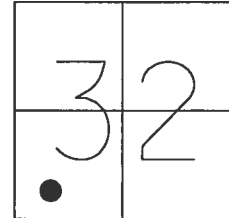
ON SURFACE - ~~BELOW~~ ON \_\_\_\_\_

~~LEFT~~ -  $\odot$  PAV'T - RIGHT 0.5'

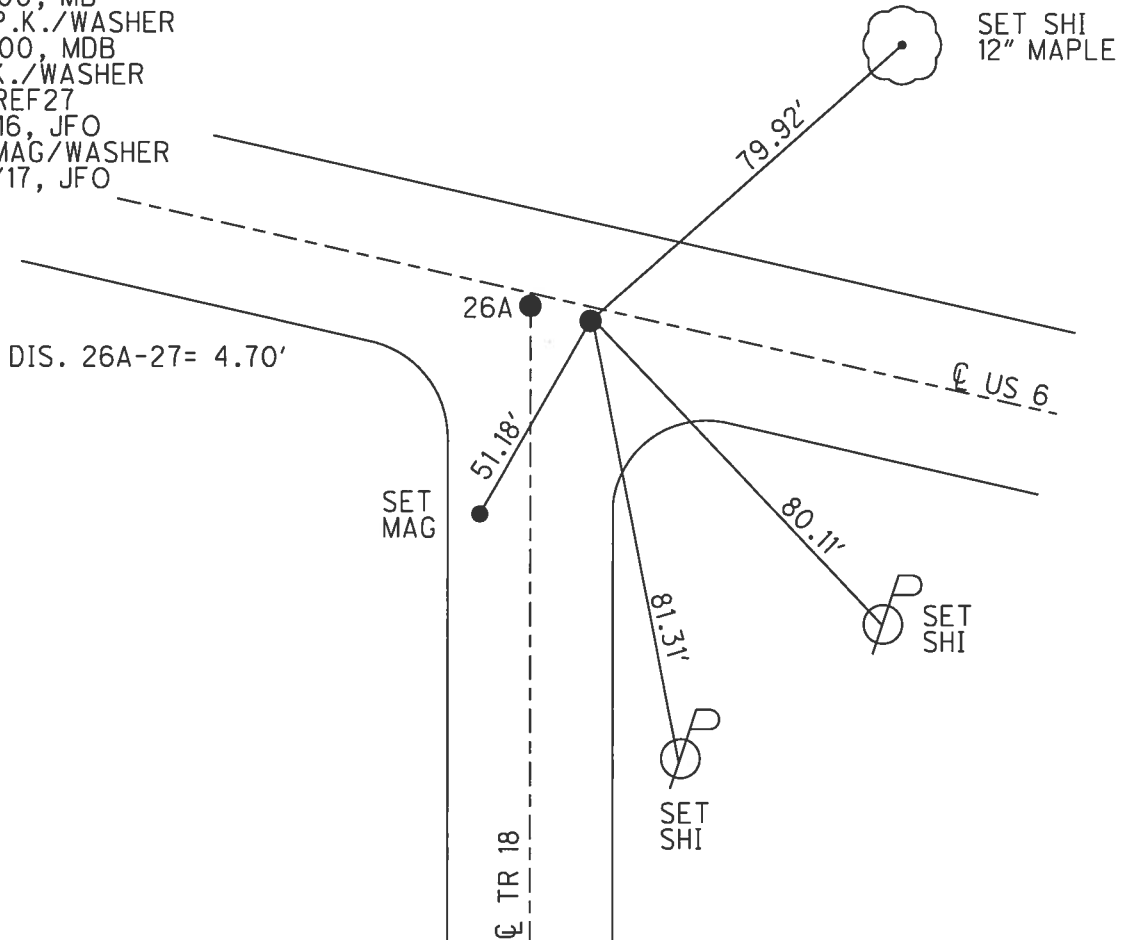
12.6' TO LT EDGE PAVEMENT

S.L.M. 371+06.04

Grid: Northing: 647035.230 Easting: 1499984.427



RECORD: P.I.  
 STA. 370+85.82  
 $\Delta = 0^\circ 03' 45''$  RT  
 FD LG.R.R.SPIKE  
 4" DOWN  
 9/5/00, MB  
 SET P.K./WASHER  
 11/3/00, MDB  
 FD PK./WASHER  
 SR6-REF27  
 3/8/16, JFO  
 SET MAG/WASHER  
 10/2/17, JFO



# O.D.O.T. DISTRICT 2 SURVEY OFFICE

PERSONNEL

REFERENCE NO. 27

SHEET 17 OF 35

NOTES BARNHISEL

H.C. MOSEK

R.C. CORDES

HUSS F

Rousos F

DATE 9-5-00

WEATHER cloudy

TEMP. +65°

ROUTE US 6

COUNTY HENRY

TOWNSHIP FREEDOM

SECTION 32

T 6 N R 6 E

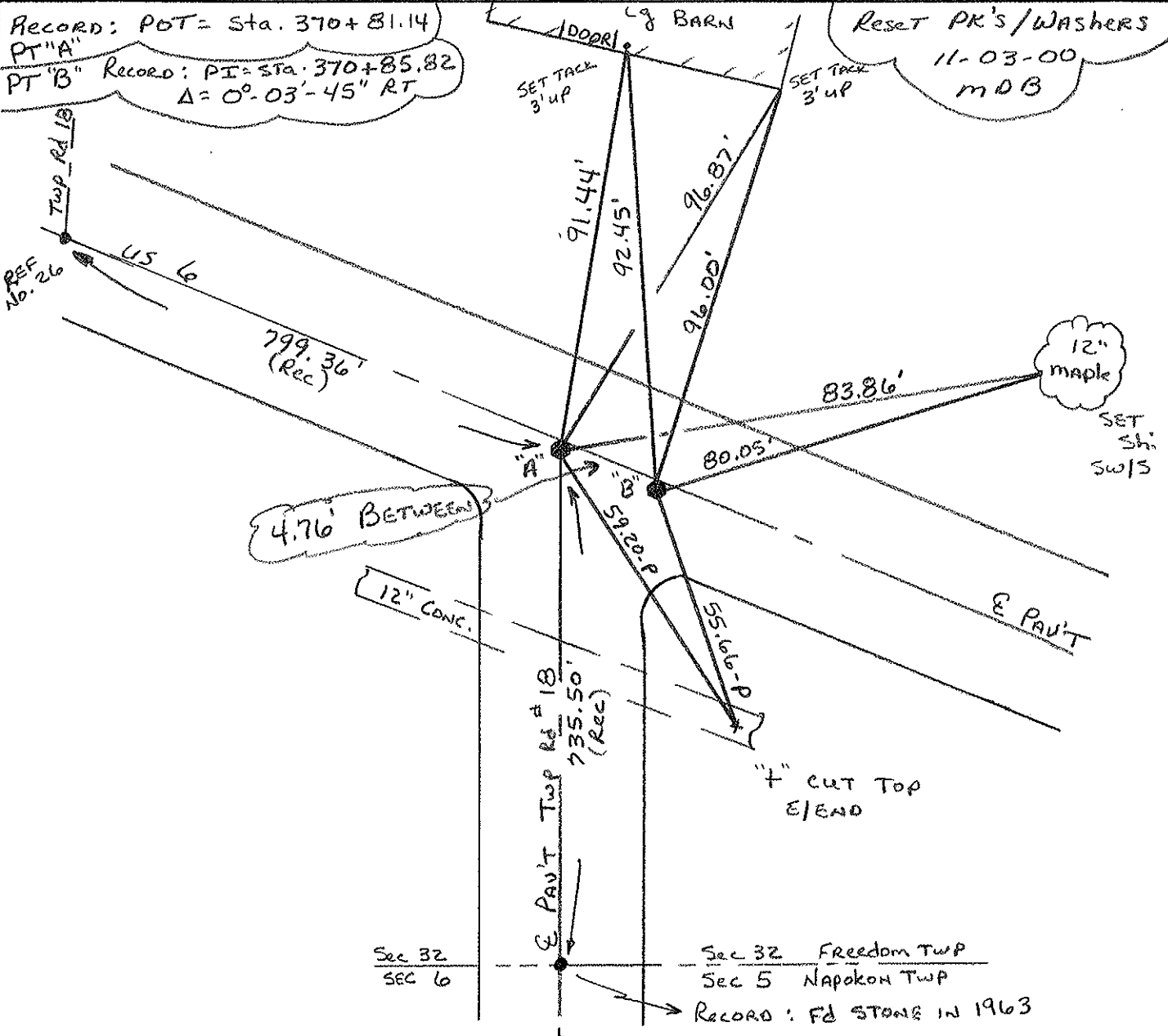
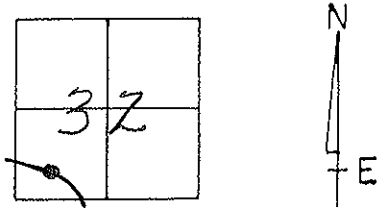
TYPE MONUMENT BOTH Lg RR Spk's

~~ON SURFACE~~ - BELOW BOTH 4"

~~LEFT - & PAV'T.~~ - RIGHT BOTH 0.5'

BOTH 12.6' TO LT EDGE PAVEMENT

S.L.M. 369+93      369+98



PERSONNEL TITLE PERSONNEL TITLE

Red Beach  
W. Krape

COUNTY HENRY

DATE 12/15 Apr '77

S. R. US 6

WEATHER

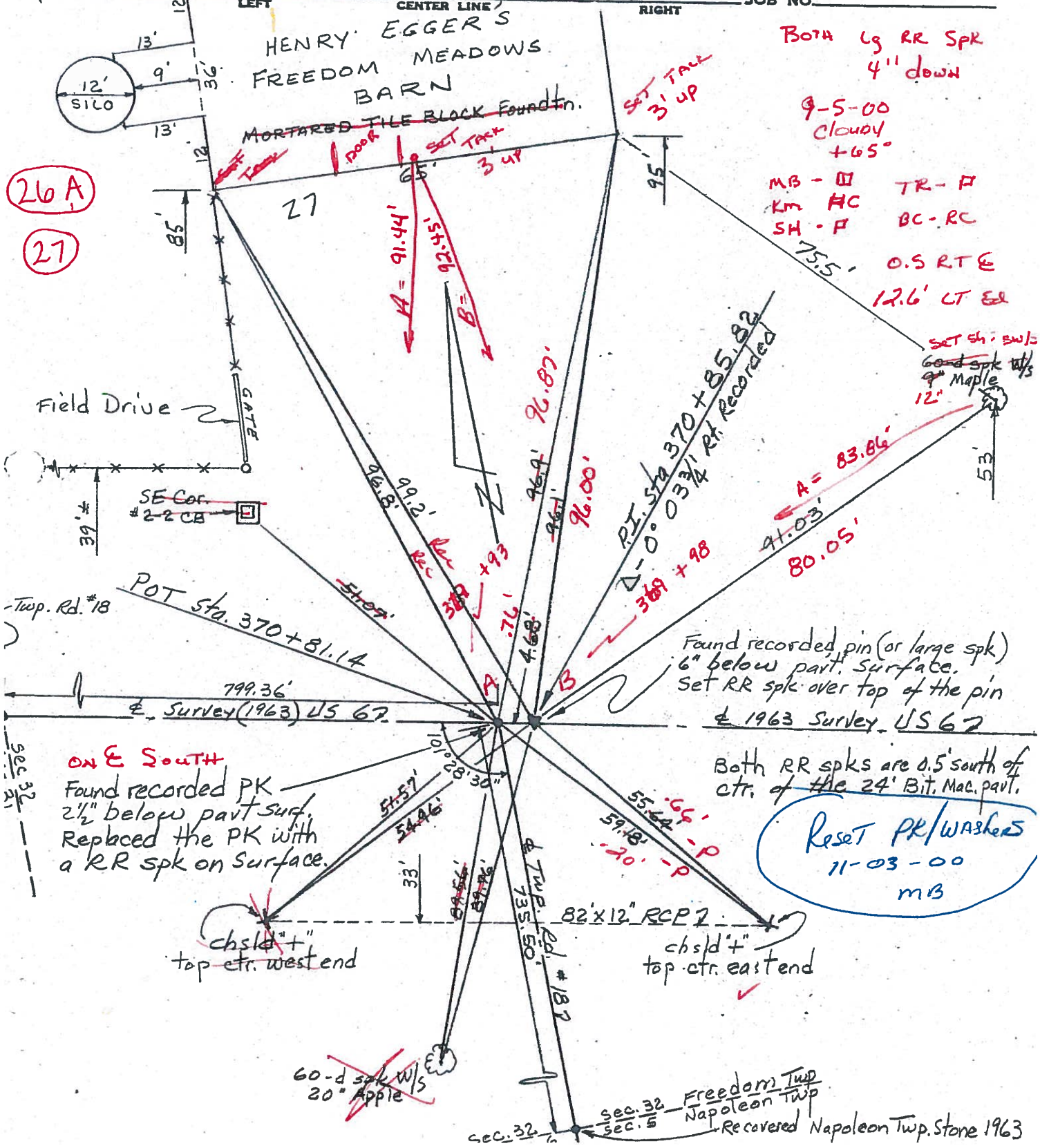
SEC. 32 Freedom Twp.

TEMP

DESCRIPTION

CONTROL POINTS

JOB NO.



26 A  
27

Both lg RR spk  
4" down

9-5-00  
cloudy  
+65°

MB - □ TR - □  
KM HC BC - RC  
SH - □

0.5 RTE  
12.6' LT Ed

Found recorded pin (or large spk)  
6" below part. surface.  
Set RR spk over top of the pin  
1963 Survey US 67

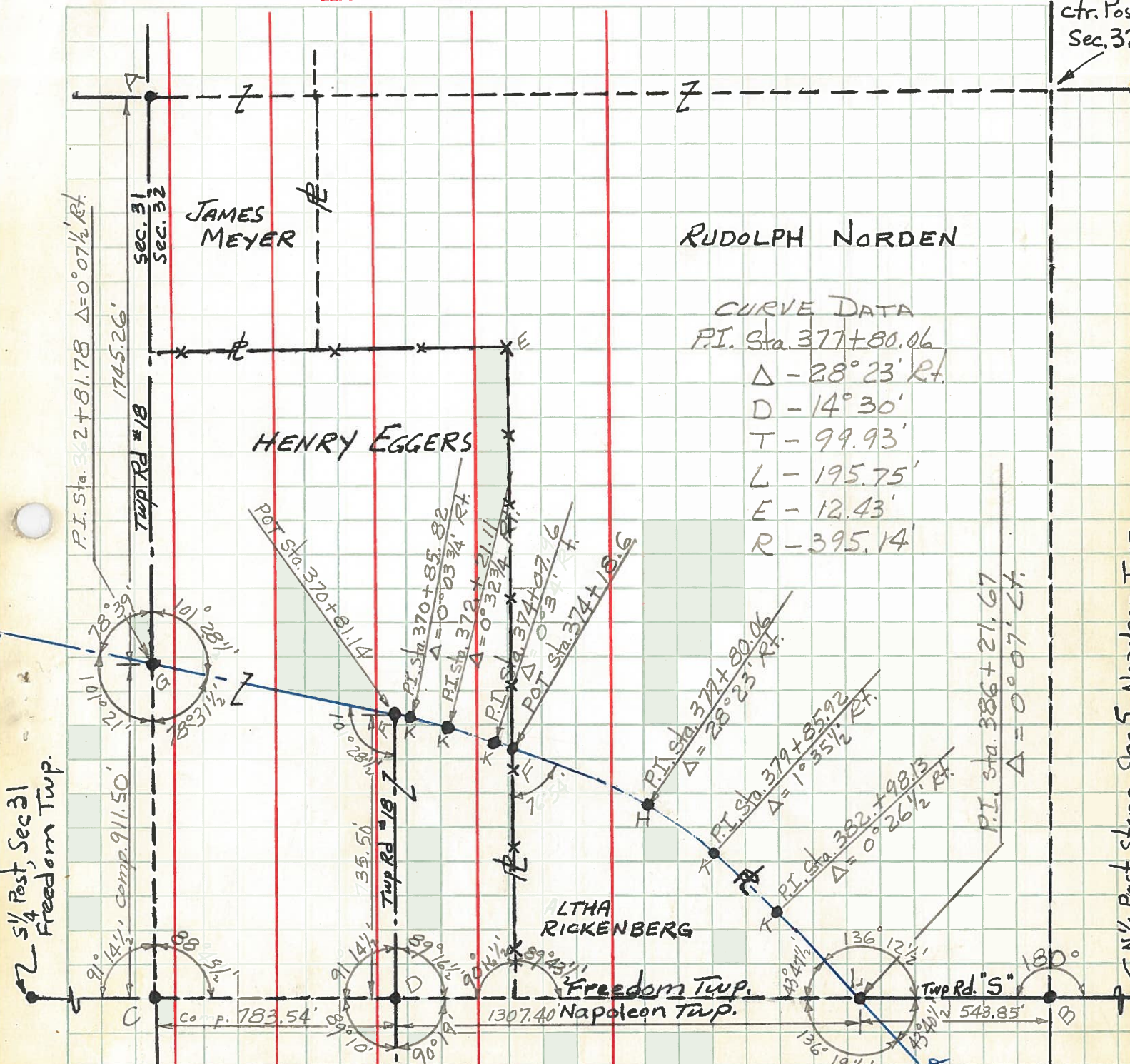
Both RR spks are 0.5' south of  
ctr. of the 24' Bit. Mac. part.

**Reset PK/Washers**  
11-03-00  
MB

**ON E SOUTH**  
Found recorded PK  
2 1/2" below part surf.  
Replaced the PK with  
a RR spk on surface.

sec. 32 Freedom Twp  
sec. 5 Napoleon Twp  
Recovered Napoleon Twp. Stone 1963

PERSONNEL TITLE PERSONNEL TITLE COUNTY Henry DATE Aug '63  
Red Beach \_\_\_\_\_  
Armbruster \_\_\_\_\_ S. R. US #6 WEATHER \_\_\_\_\_  
Knape \_\_\_\_\_  
Mohler \_\_\_\_\_ SEC. SW 1/4 Sec. 32 TEMP. \_\_\_\_\_  
 DESCRIPTION Freedom Twp. T-6-N R-6-E JOB NO. \_\_\_\_\_



- A, D - Stones found from recorded references
- B - I. Pipe found from recorded references
- C - See note on SE 1/4 Sec. 31, Freedom Twp.
- E - Good old car post and fence line south
- F - Est. PK's on Survey
- G - Found RR spk from recorded references
- H - Found I. Rod from recorded references
- K - Points found at end by chucks from all survey

SE 1/4 Post, Sec 31  
Freedom Twp.

N 1/2 Post stone Cor 5 Napoleon Twp.