

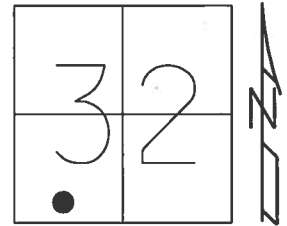
O.D.O.T. DISTRICT 2 SURVEY OFFICE (USE ONLY)

PERSONNEL _____ REFERENCE NO. 27 A SHEET 20 OF 37

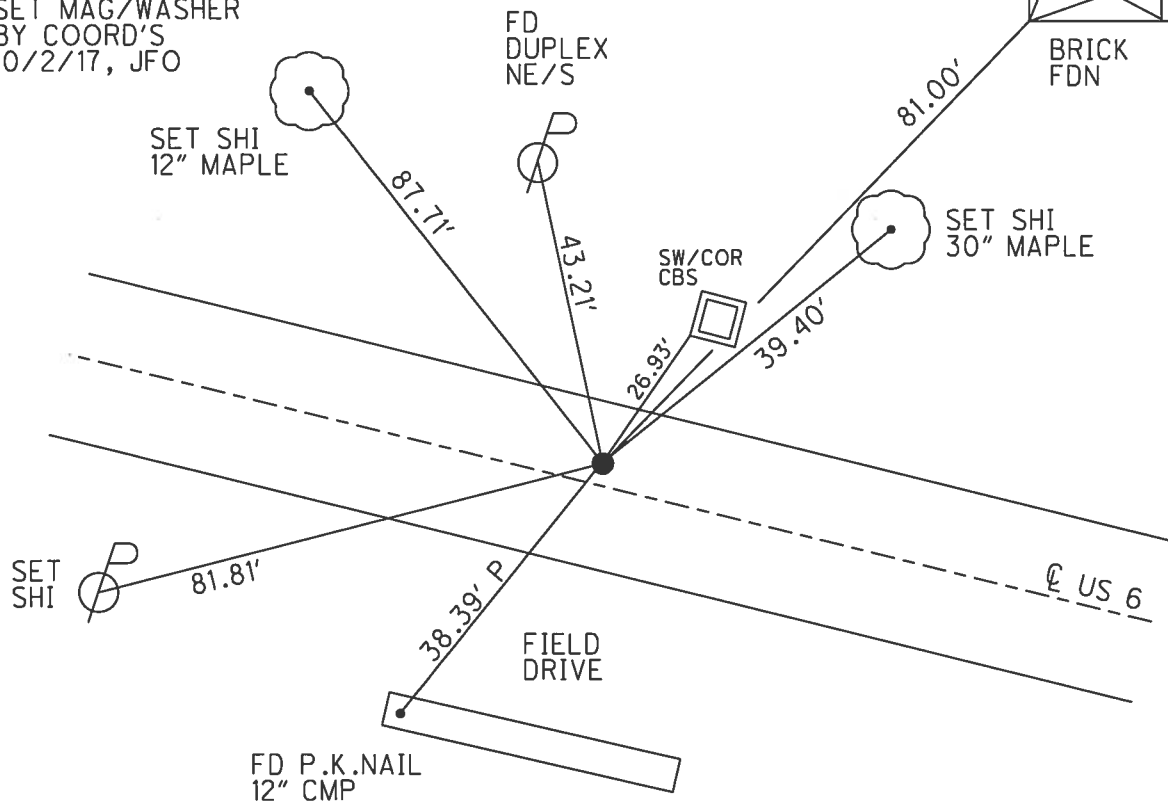
NOTES O'DONNELL DATE 10/2/17 ROUTE US 6
 H.C. LEU WEATHER SUNNY COUNTY HENRY
 R.C. FARKAS TEMP. 56° TOWNSHIP FREEDOM
 _____ SECTION 32
 _____ T 6 N R 6 E

TYPE MONUMENT P.K./WASHER
 ON SURFACE - ~~BELOW~~ ON _____
 LEFT - ☉ PAV'T - ~~RIGHT~~ 1.5'
10.3' TO LT EDGE PAVEMENT
 S.L.M. 372+48.47

Grid: Northing: 647003.788 Easting: 1500116.079



RECORD: P.I.
 STA. 372+21.11
 $\Delta = 0^\circ 32' 45''$ RT
 FD LG.R.R.SPIKE
 4" DOWN
 9/5/00, MB
 SET P.K./WASHER
 11/3/00, MDB
 FD PK./WASHER
 SR6-REFA27
 3/8/16, JFO
 SET MAG/WASHER
 BY COORD'S
 10/2/17, JFO



O.D.O.T. DISTRICT 2 SURVEY OFFICE

PERSONNEL

REFERENCE NO. 27-A

SHEET 18 OF 35

NOTES BARNHISEL

H.C. MOSEK

R.C. CORDES

HUSS P

Rousos P

DATE 9-5-00

WEATHER cloudy

TEMP. +65°

ROUTE US 6

COUNTY HENRY

TOWNSHIP FREEDOM

SECTION 32

T 6 N R 6 E

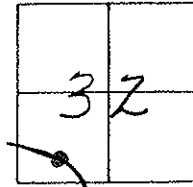
TYPE MONUMENT Lg RR SPIKE

~~ON SURFACE~~ - BELOW 4"

LEFT - E PAV'T. - RIGHT 1.5'

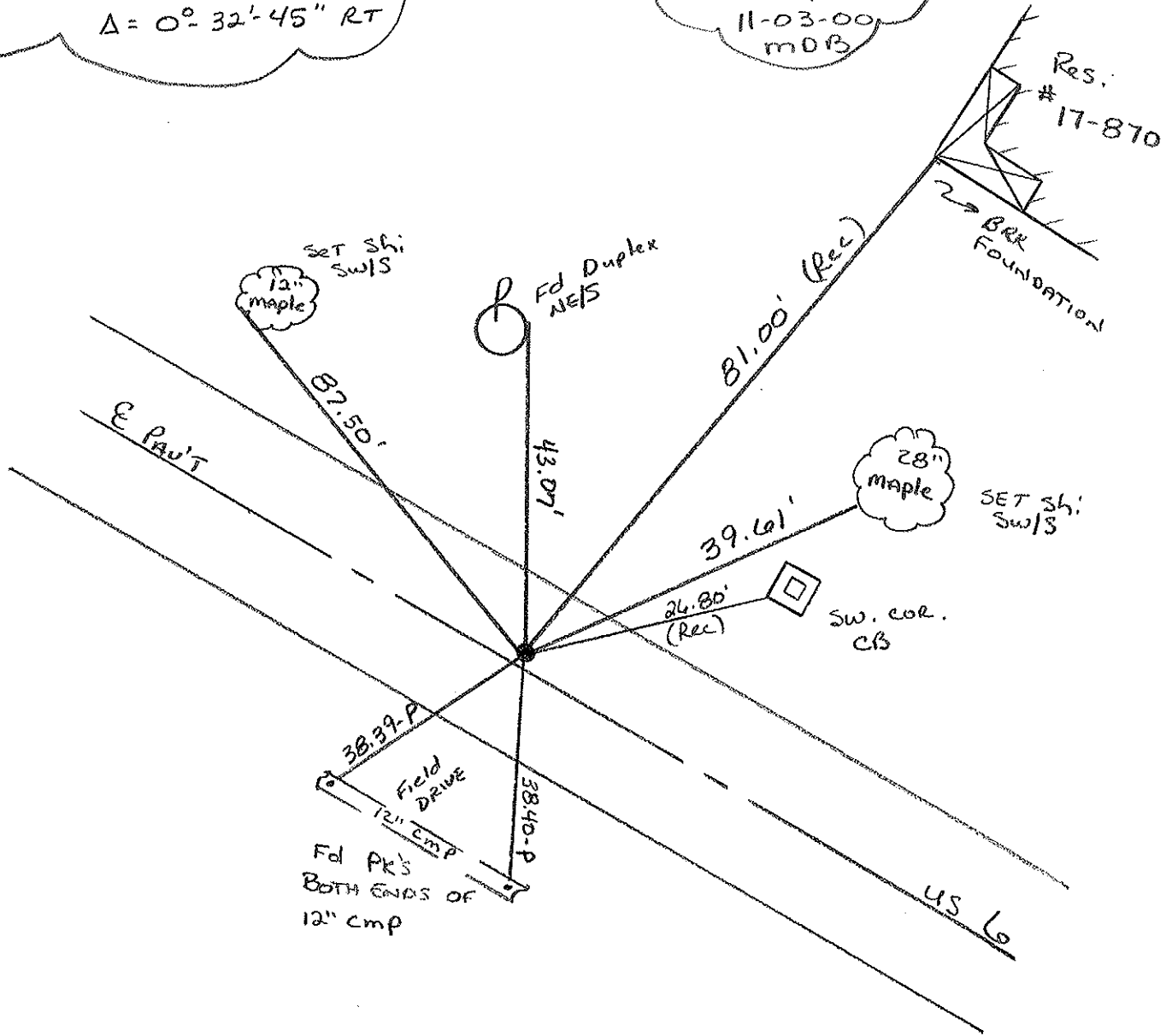
10.3' TO LT EDGE PAVEMENT

S.L.M. 371+32



Record: PI = STA. 372+21.11
 $\Delta = 0^\circ - 32' - 45''$ RT

Reset PK/WASHER
 11-03-00
 MDB



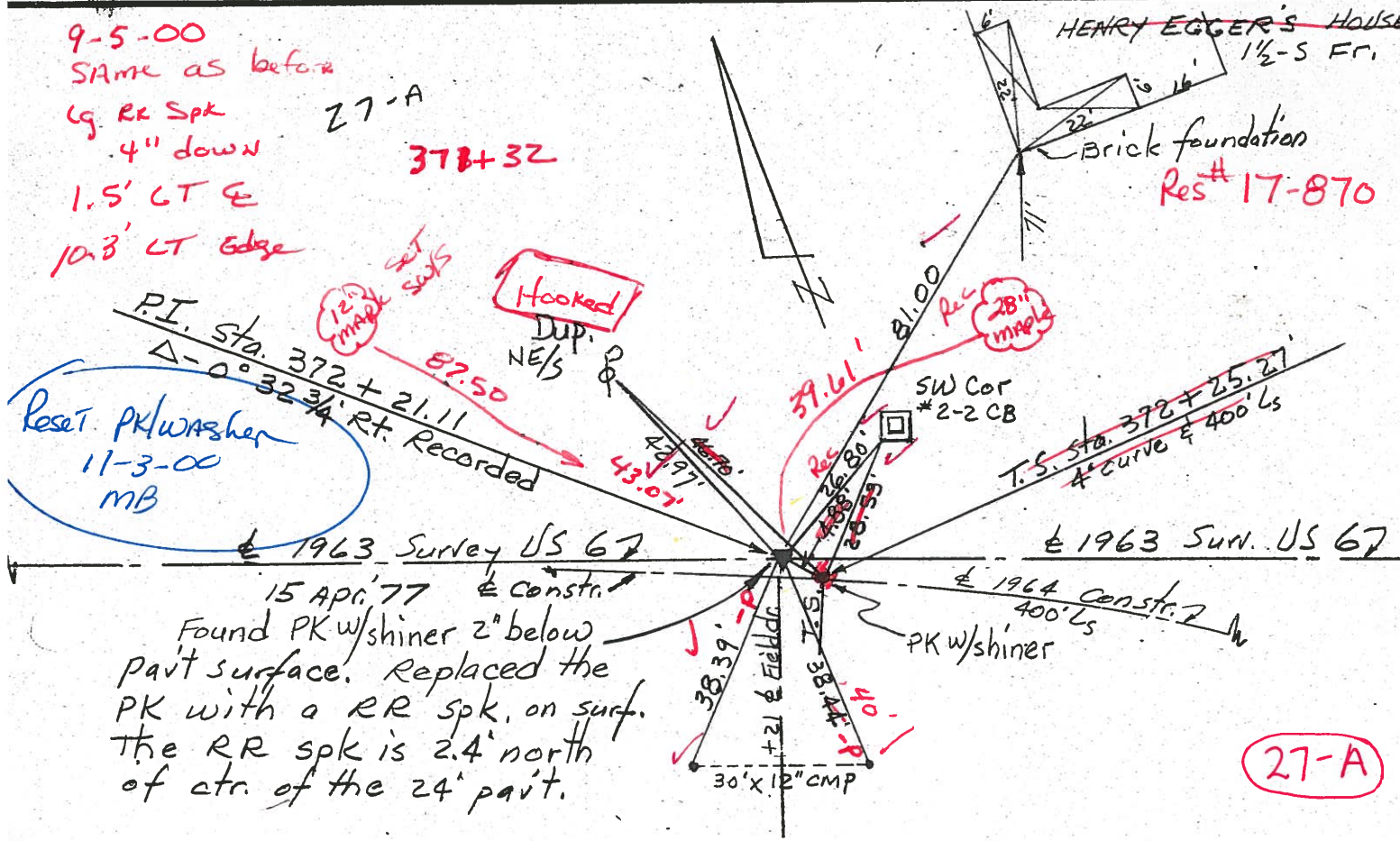
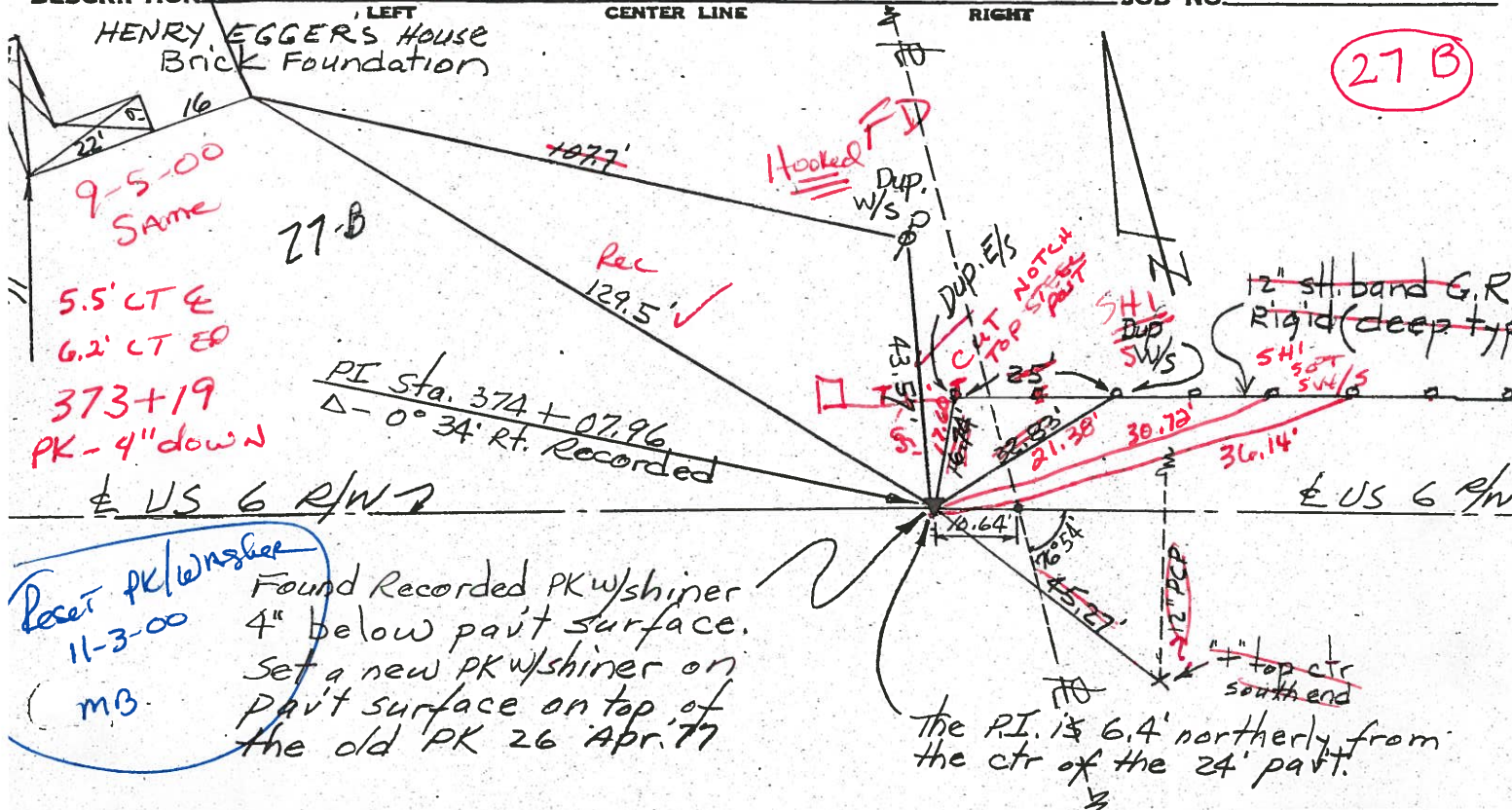
PERSONNEL TITLE PERSONNEL TITLE
Red Beach
W. Knape

COUNTY HENRY DATE 15/27 Apr. 77

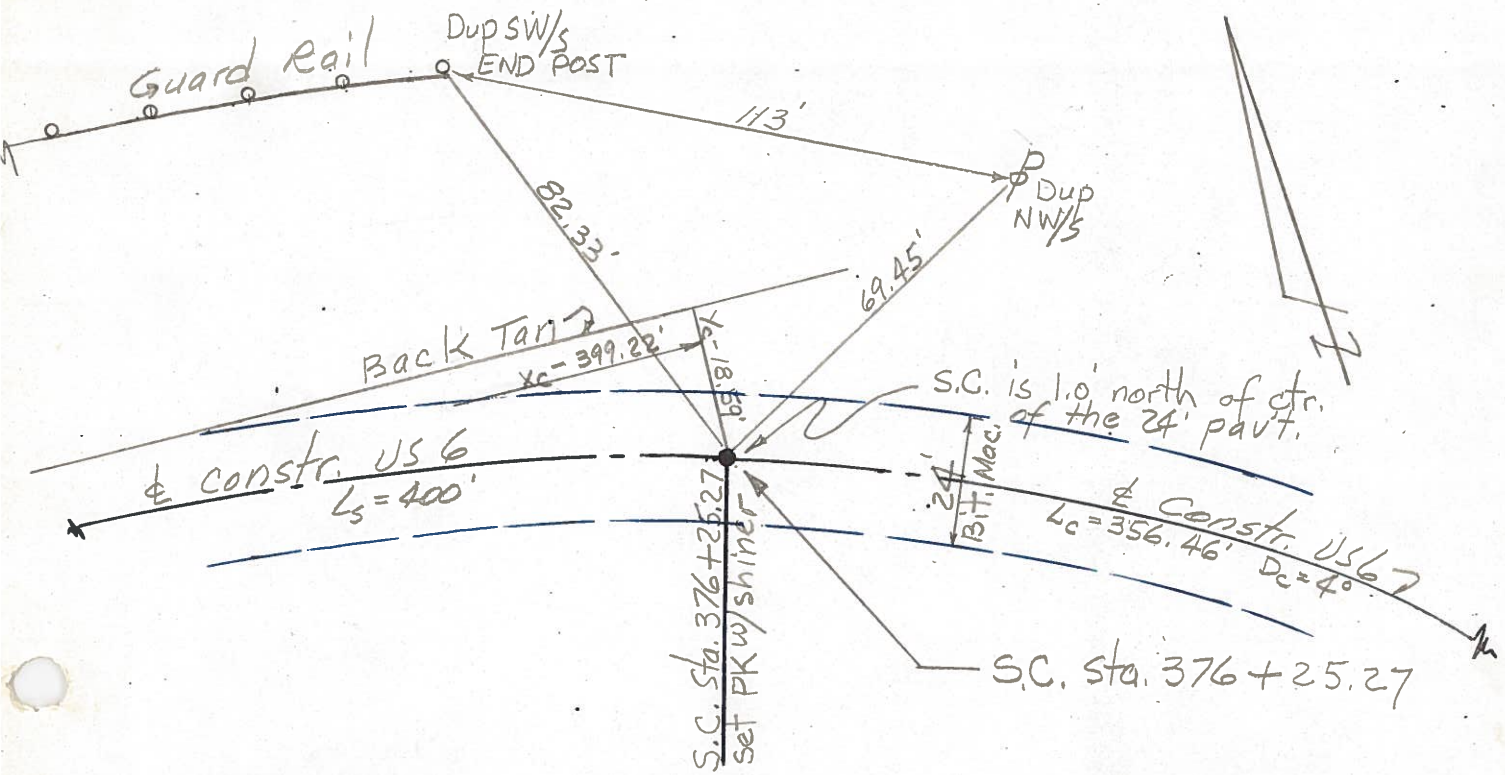
S. R. US 6 WEATHER _____

SEC. 32 Freedom Twp. TEMP _____

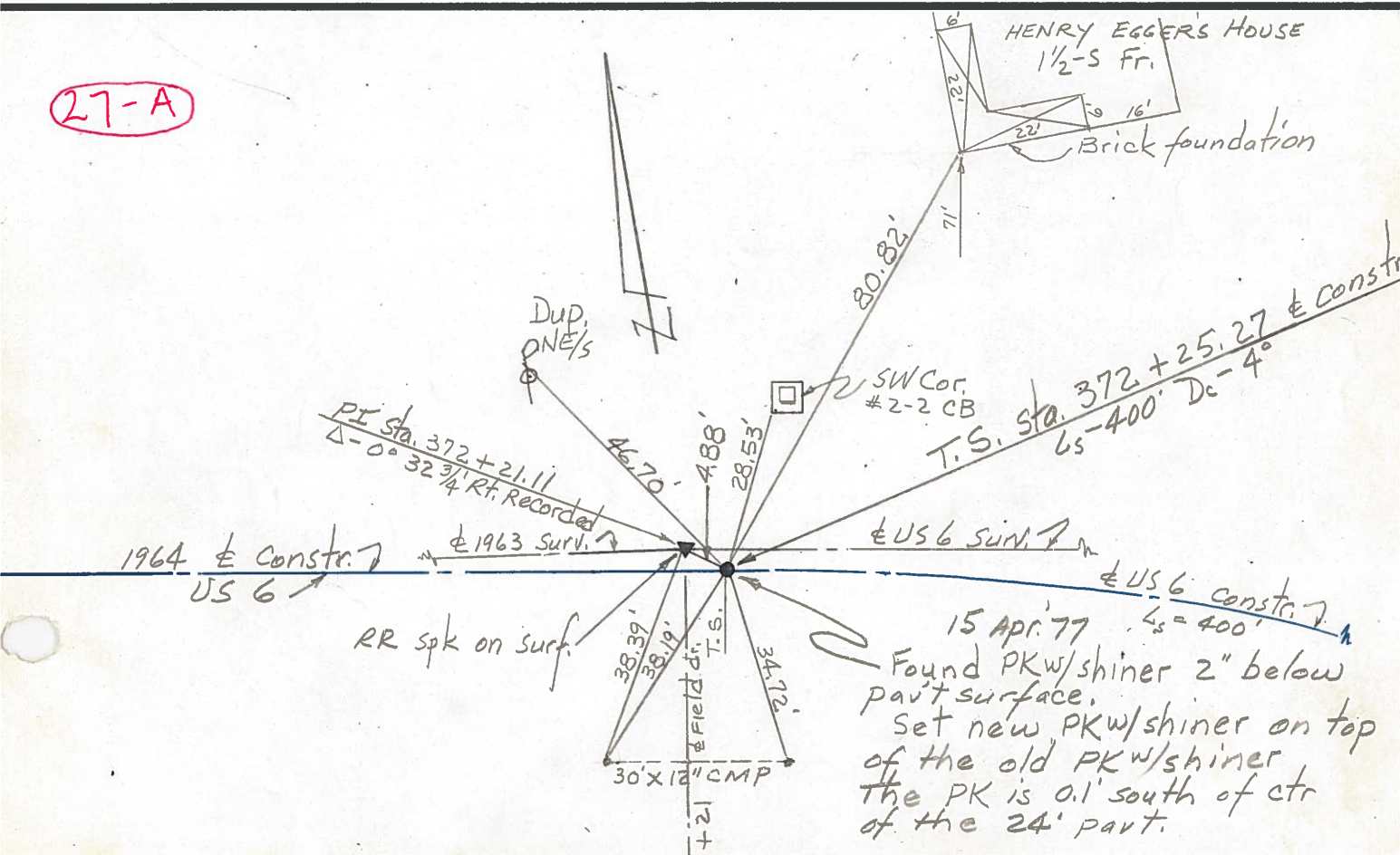
DESCRIPTION CONTROL POINTS JOB NO. _____



PERSONNEL	TITLE	PERSONNEL	TITLE	COUNTY	DATE
Red Beach		U. Knappe		HENRY	15-16 Apr. 77
				S. R.	WEATHER
				US 6	
				SEC. 32 Freedom Twp.	TEMP.
DESCRIPTION	1964 [±] construction Spiral Controls				JOB NO.
	LEFT	CENTER LINE	RIGHT		



27-A



PERSONNEL Red Beach TITLE _____ COUNTY HENRY DATE 15 Apr. 77
 PERSONNEL W. Knappe TITLE _____ S. R. US 6 WEATHER EGGERS' BARN
 _____ TITLE _____ SEC. FREEDOM TWP. HENRY TEMP _____
 DESCRIPTION 1964± constr. CONTROLS JOB NO. _____

