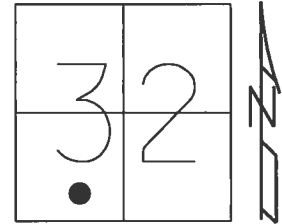


O.D.O.T. DISTRICT 2 SURVEY OFFICE (USE ONLY)

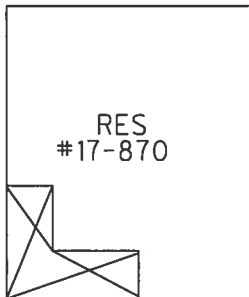
PERSONNEL \_\_\_\_\_ REFERENCE NO. 27 B SHEET 21 OF 37

NOTES O'DONNELL DATE 10/2/17 ROUTE US 6  
 H.C. LEU WEATHER SUNNY COUNTY HENRY  
 R.C. FARKAS TEMP. 63° TOWNSHIP FREEDOM  
 \_\_\_\_\_ SECTION 32  
 \_\_\_\_\_ T 6 N R 6 E

TYPE MONUMENT MAG/WASHER  
 ON SURFACE - ~~BELOW~~ ON \_\_\_\_\_  
 LEFT - ☉ PAV'T - ~~RIGHT~~ 5.8'  
6.2' TO LT EDGE PAVEMENT  
 S.L.M. 374+28.10

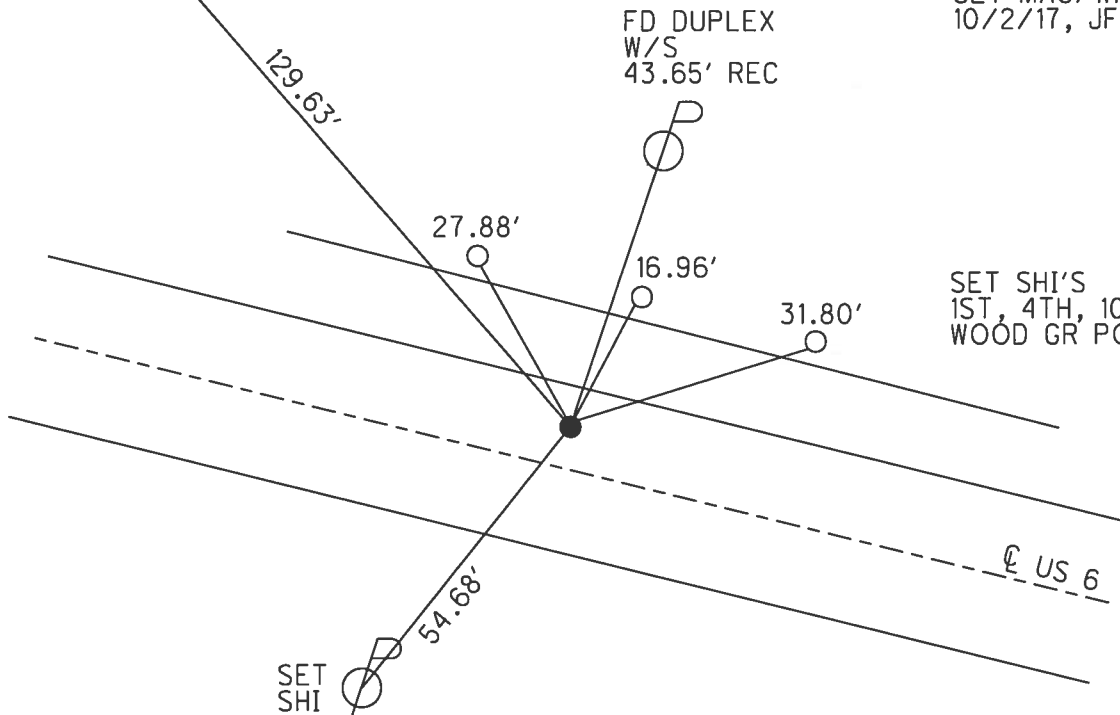


Grid: Northing: 646958.931 Easting: 1500297.376



CTR OF  
6TH BRICK  
UP

RECORD: P.I.  
 STA. 374+07.96  
 $\Delta = 0^\circ 34' RT$   
 FD P.K.NAIL  
 4" DOWN  
 9/5/00, MB  
 SET P.K./WASHER  
 11/3/00, MDB  
 FD PK.NAIL  
 6 1/2" DOWN  
 SR6-REFB27  
 3/8/16, JFO  
 SET MAG/WASHER  
 10/2/17, JFO



# O.D.O.T. DISTRICT 2 SURVEY OFFICE

PERSONNEL

REFERENCE NO. 27-B

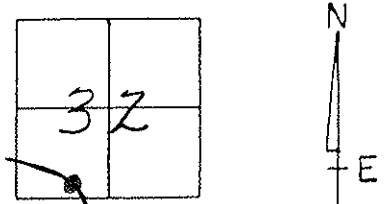
SHEET 19 OF 35

NOTES BARNHISEL  
 H.C. MOSE  
 R.C. CORDES  
HUSS F  
Rousos F

DATE 9-5-00  
 WEATHER cloudy  
 TEMP. +65°

ROUTE US 6  
 COUNTY HENRY  
 TOWNSHIP FREEDOM  
 SECTION 32  
T 6 N R 6 E

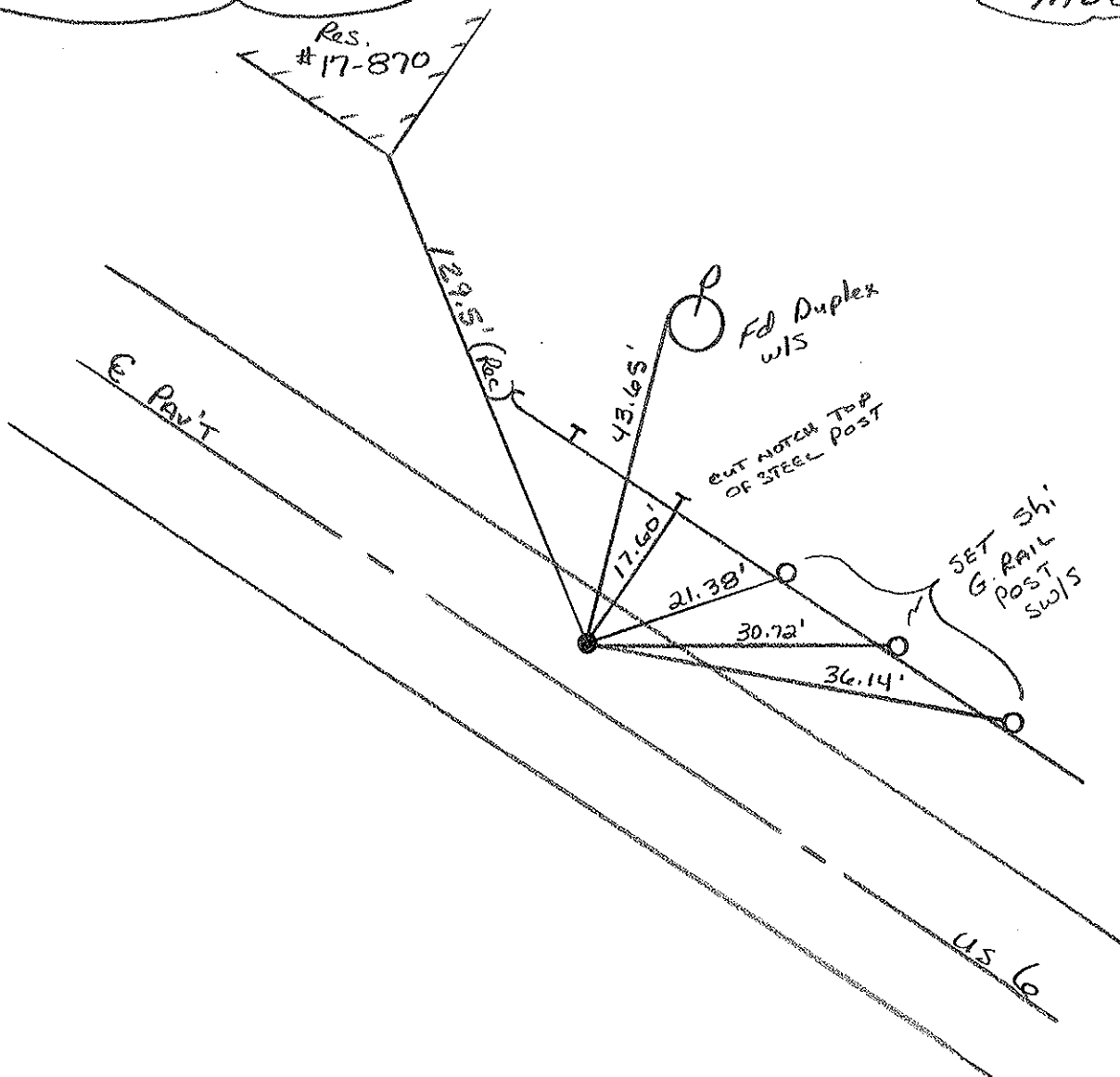
TYPE MONUMENT PK NAIL  
 ON SURFACE - BELOW 4"  
 LEFT- & PAV'T. - RIGHT 5.5'  
6.2' TO LT EDGE PAVEMENT  
 S.L.M. 373+19



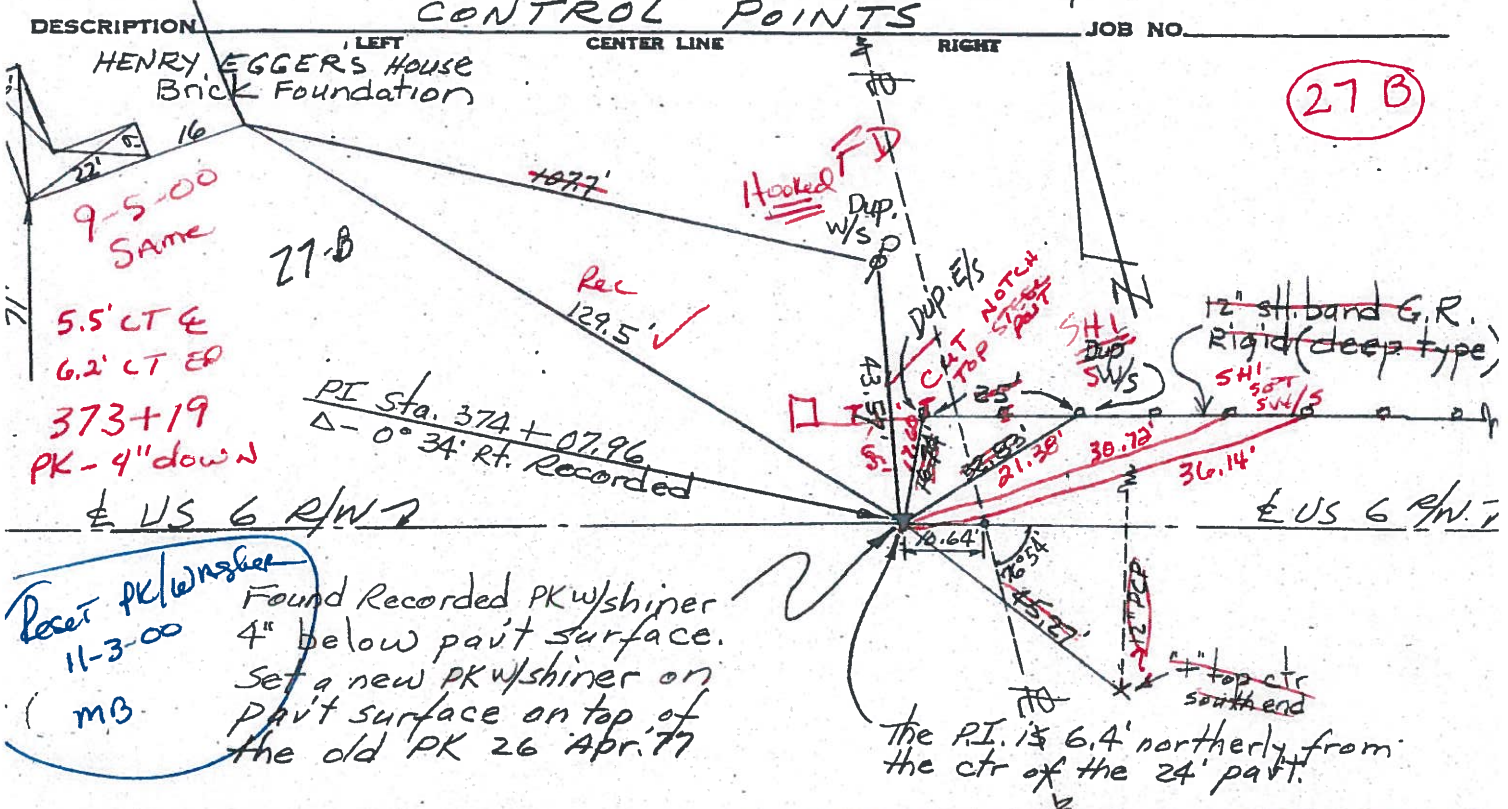
RECORD: PI = STA. 374+07.96

$\Delta = 0^\circ - 34' \text{ RT}$

RESET PK/WASHER  
 11-03-00  
 MOB

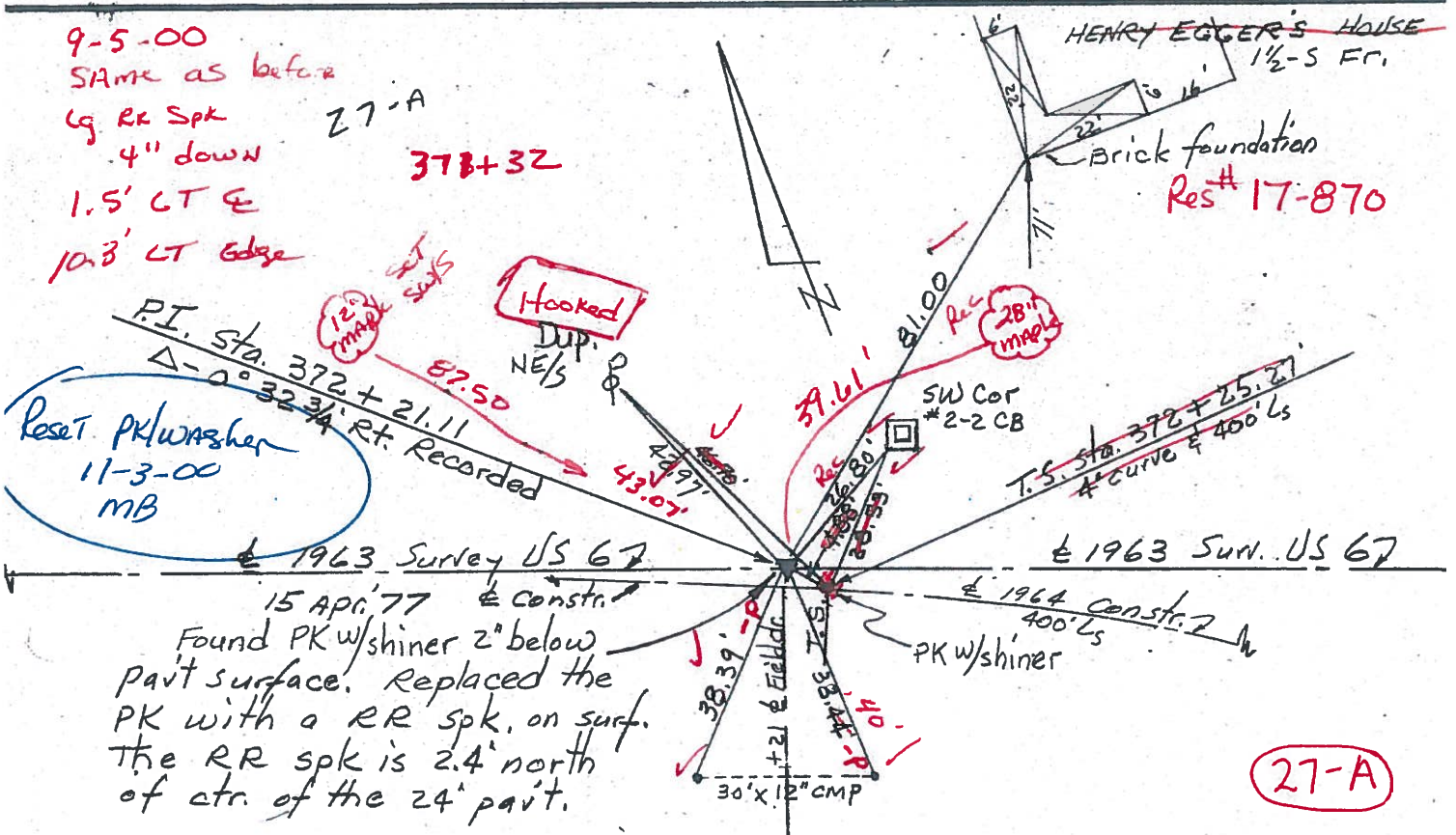


PERSONNEL Red Beach TITLE \_\_\_\_\_ COUNTY HENRY DATE 15/27 Apr. 77  
W. Knape TITLE \_\_\_\_\_ S. R. US 6 WEATHER \_\_\_\_\_  
 \_\_\_\_\_ TITLE \_\_\_\_\_ SEC. 32 Freedom Twp TEMP. \_\_\_\_\_



Reset PK/washer 11-3-00 MB

Found Recorded PK/washer 4" below pavt surface. Set a new PK/washer on pavt surface on top of the old PK 26 Apr. 77



Reset PK/washer 11-3-00 MB