

O.D.O.T. DISTRICT 2 SURVEY OFFICE (USE ONLY)

PERSONNEL

REFERENCE NO. 28

SHEET 22 OF 37

NOTES BARNHEISEL
H.C. MOSER
R.C. CORDES
HUSS
ROUSOS

DATE 9/5/00
WEATHER CLOUDY
TEMP. 65°

ROUTE US 6
COUNTY HENRY
TOWNSHIP FREEDOM
SECTION 32
T 6 N R 6 E

TYPE MONUMENT 1" IPIPE

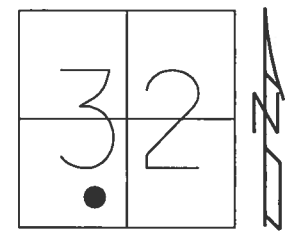
~~ON SURFACE~~ - BELOW 2"

LEFT - ☉ PAV'T - ~~RIGHT~~ 54.44'

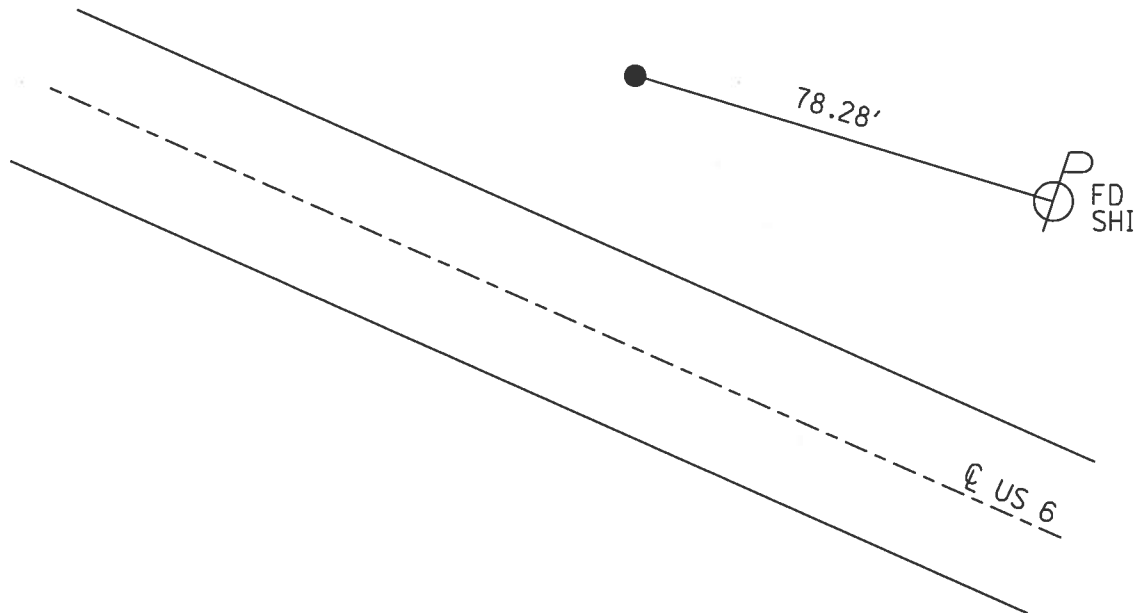
42.7' LT TO LT EDGE PAVEMENT

S.L.M. 377+88.89

Grid: Northing: 646866.083 Easting: 1500657.544



RECORD: P.I.
STA. 377+80.06
 $\Delta = 28^\circ 23' RT$
FD 1" IPIPE
2" DOWN
9/5/00, MB
FD 1" IPIPE
2" DOWN
SR6-REF28
3/8/16, JFO



O.D.O.T. DISTRICT 2 SURVEY OFFICE

PERSONNEL

REFERENCE NO. 28

SHEET 20 OF 35

NOTES BARNHISEL

H.C. MOSEER

R.C. CORDES

HUSS P

Rousos P

DATE 9-5-00

WEATHER cloudy

TEMP. +65°

ROUTE US 6

COUNTY HENRY

TOWNSHIP FREEDOM

SECTION 32

T. 6 N R. 6 E

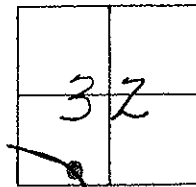
TYPE MONUMENT 1" PIPE

ON SURFACE - BELOW 2"

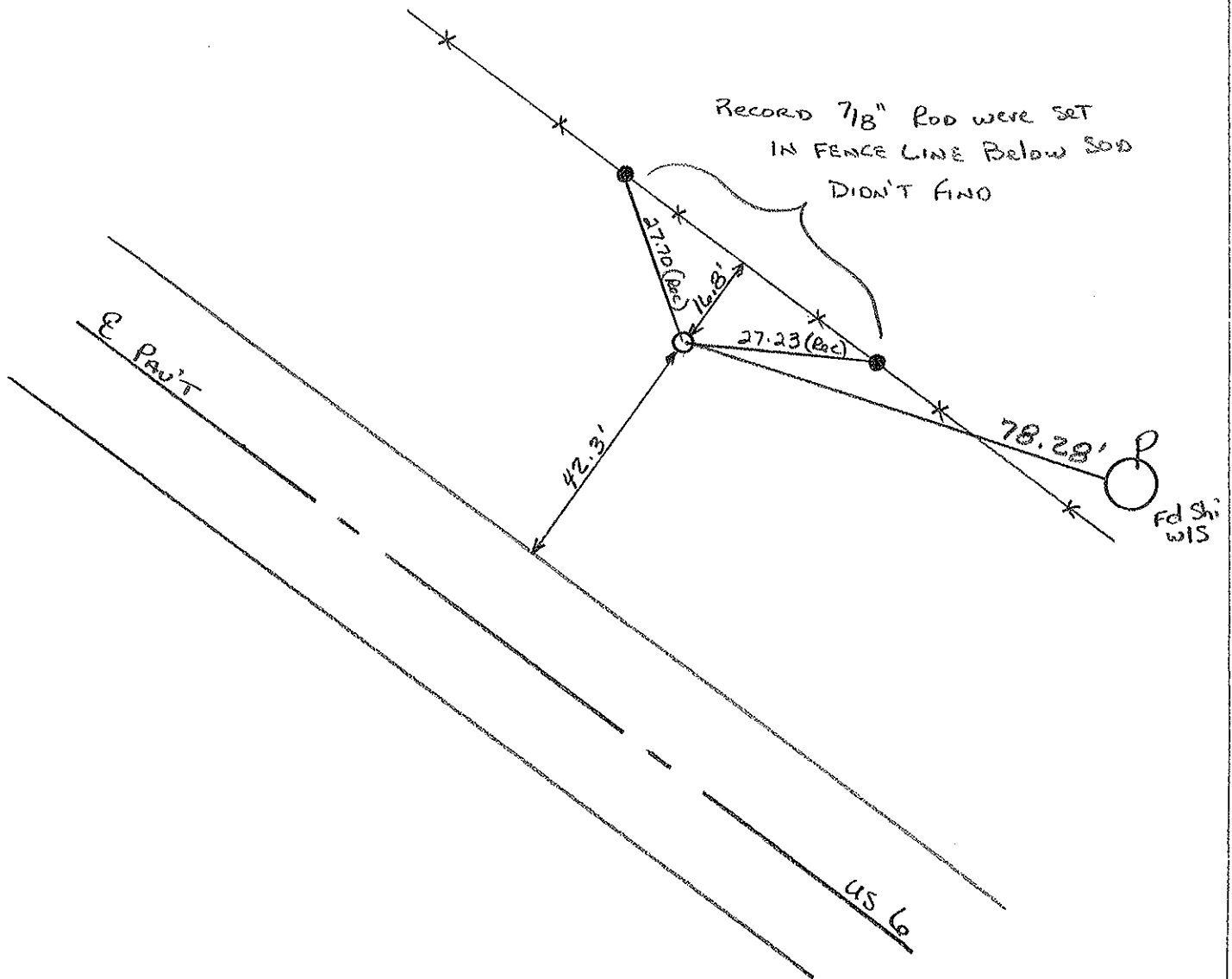
LEFT - ℄ PAV'T. - RIGHT 54'

42.3 TO LT. EDGE PAVEMENT

S.L.M. 376+84



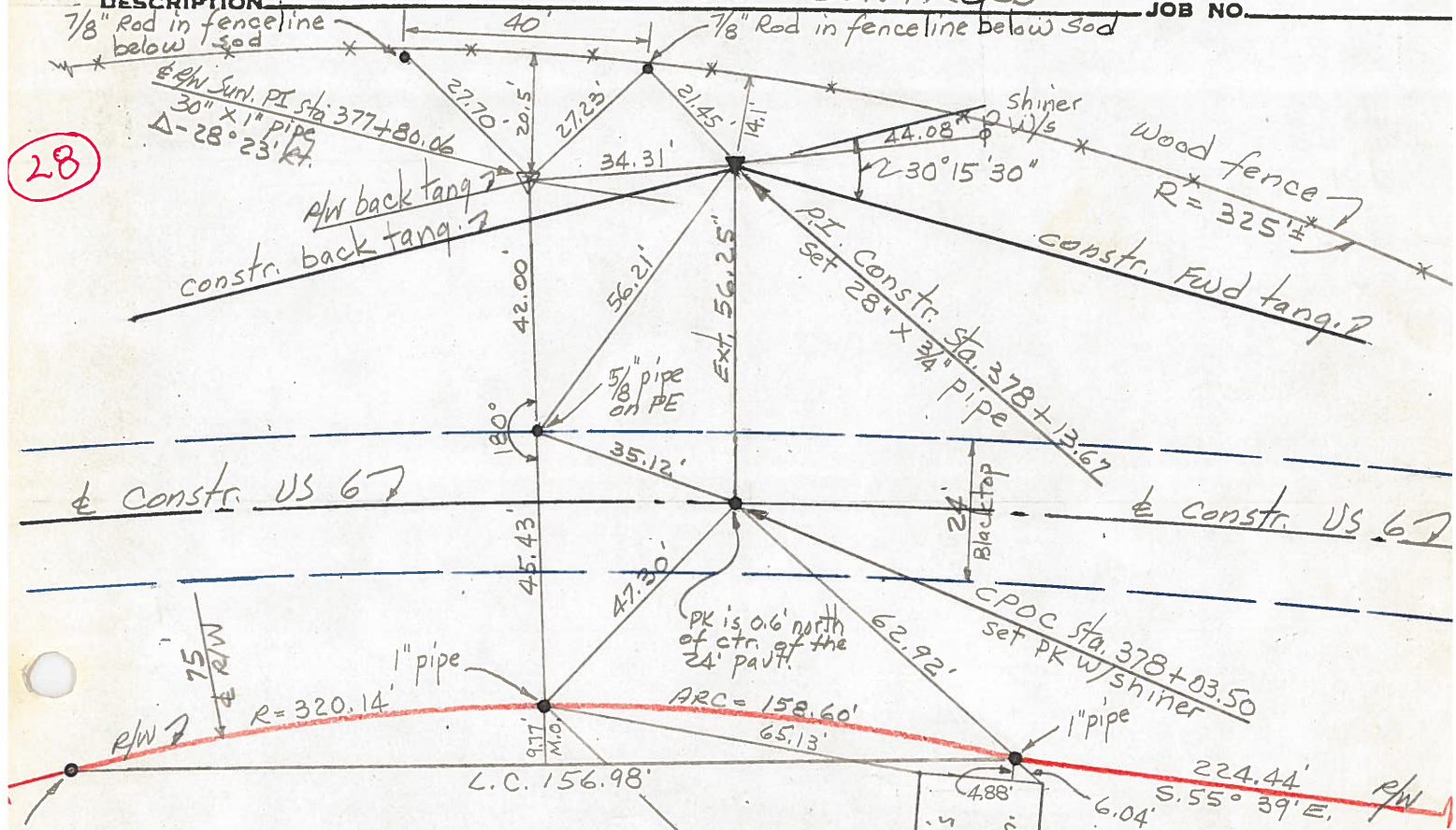
Record : PI = sta. 377+80.06
 $\Delta = 28^{\circ} 23' RT$



PERSONNEL Red Beach TITLE _____ COUNTY HENRY DATE 10 May 197
W. Knape _____ S. R. US 6 WEATHER _____
 _____ _____ SEC. SW 1/4, Sec. 32, Freedom Twp TEMP. _____

28

DESCRIPTION CONSTRUCTION CONTROLS JOB NO. _____



A point in plowed field

PI Sta. 378+13.67
 $\Delta - 30^\circ 15' 30''$ RT
 $D_c - 4^\circ$
 $L_s - 400'$
 $\Delta_c - 14^\circ 15' 30''$
 $L_c - 356.46'$
 $\theta_s - 8^\circ$
 $T_s - 588.40'$
 $R_c - 1432.39'$
 $E_s - 56.25'$
 $P - 4.65'$
 $K - 199.87'$
 $X_c - 399.22'$
 $Y_c - 18.59'$
 $L.T. - 246.94'$
 $S.T. - 133.58'$
 $L.C. - 399.65'$

T.S. - Sta. 372+25.27
 S.C. - Sta. 376+25.27
 C.P.O.C. - Sta. 378+03.50
 C.S. - Sta. 379+81.73
 S.T. - Sta. 383+81.73 Back
 = Sta. 383+96.47 Ahead; Deduct 14.74'
 The S.T. is 2.10' north of the ϵ r/w

