

O.D.O.T. DISTRICT 2 SURVEY OFFICE (USE ONLY)

PERSONNEL _____ REFERENCE NO. 28 B SHEET 24 OF 37

NOTES O'DONNELL DATE 10/2/17 ROUTE US 6
 H.C. LEU WEATHER SUNNY COUNTY HENRY
 R.C. FARKAS TEMP. 63° TOWNSHIP FREEDOM
 SECTION 32
 T 6 N R 6 E

TYPE MONUMENT MAG/WASHER

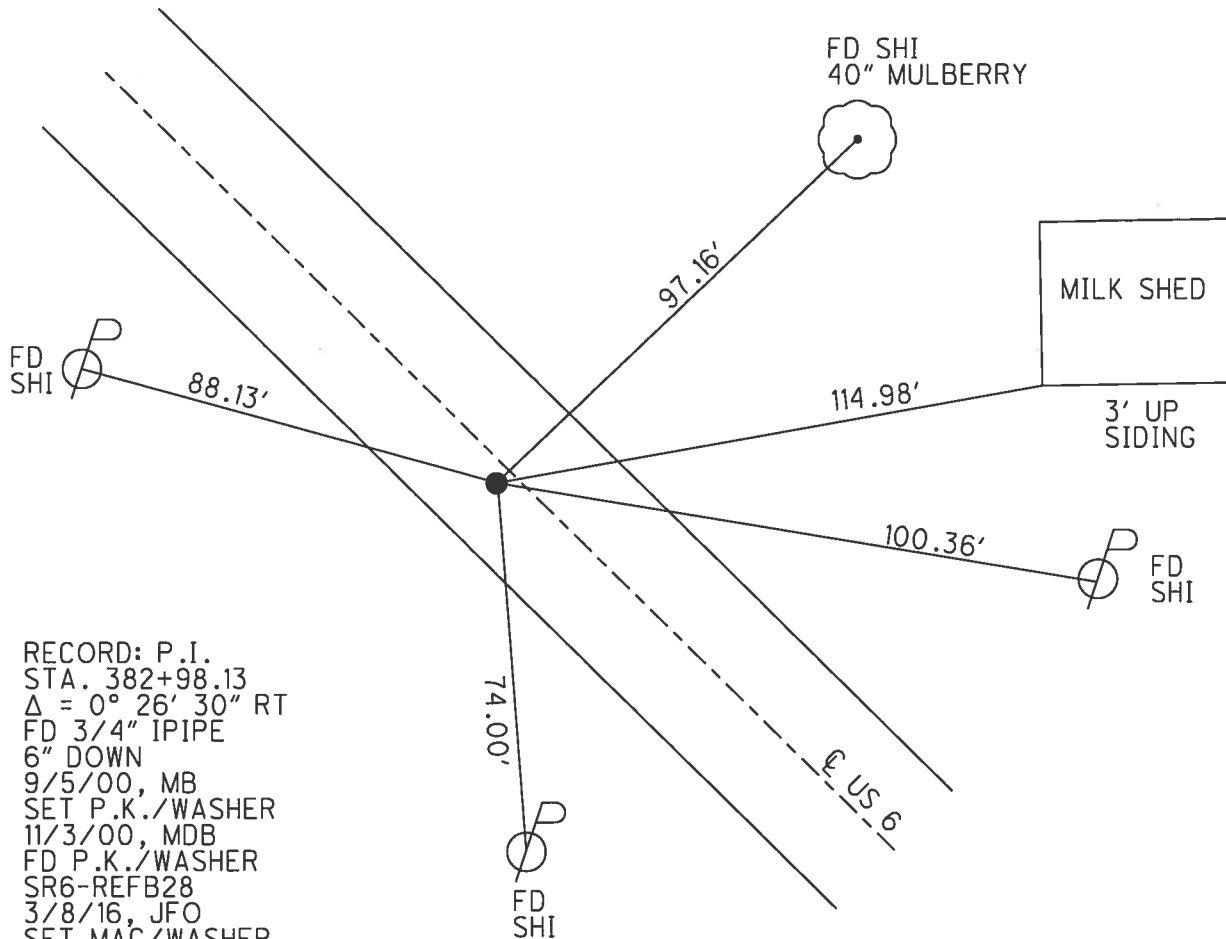
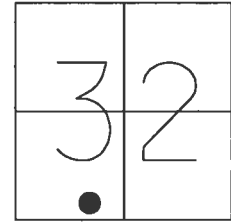
ON SURFACE - ~~BELOW~~ ON _____

~~LEFT~~ - CL PAV'T - RIGHT 1.5'

9.8' TO RT EDGE PAVEMENT

S.L.M. 383+03.49

Grid: Northing: 646504.771 Easting: 1501034.495



RECORD: P.I.
 STA. 382+98.13
 $\Delta = 0^\circ 26' 30''$ RT
 FD 3/4" IPIPE
 6" DOWN
 9/5/00, MB
 SET P.K./WASHER
 11/3/00, MDB
 FD P.K./WASHER
 SR6-REFB28
 3/8/16, JFO
 SET MAG/WASHER
 10/2/17, JFO

O.D.O.T. DISTRICT 2 SURVEY OFFICE

PERSONNEL

REFERENCE NO. Z8-B

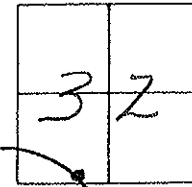
SHEET 22 OF 35

NOTES BARNHISEL
 H.C. MOSEK
 R.C. CORDES
HUSS P
ROUSOS P

DATE 9-5-00
 WEATHER cloudy
 TEMP. +65°

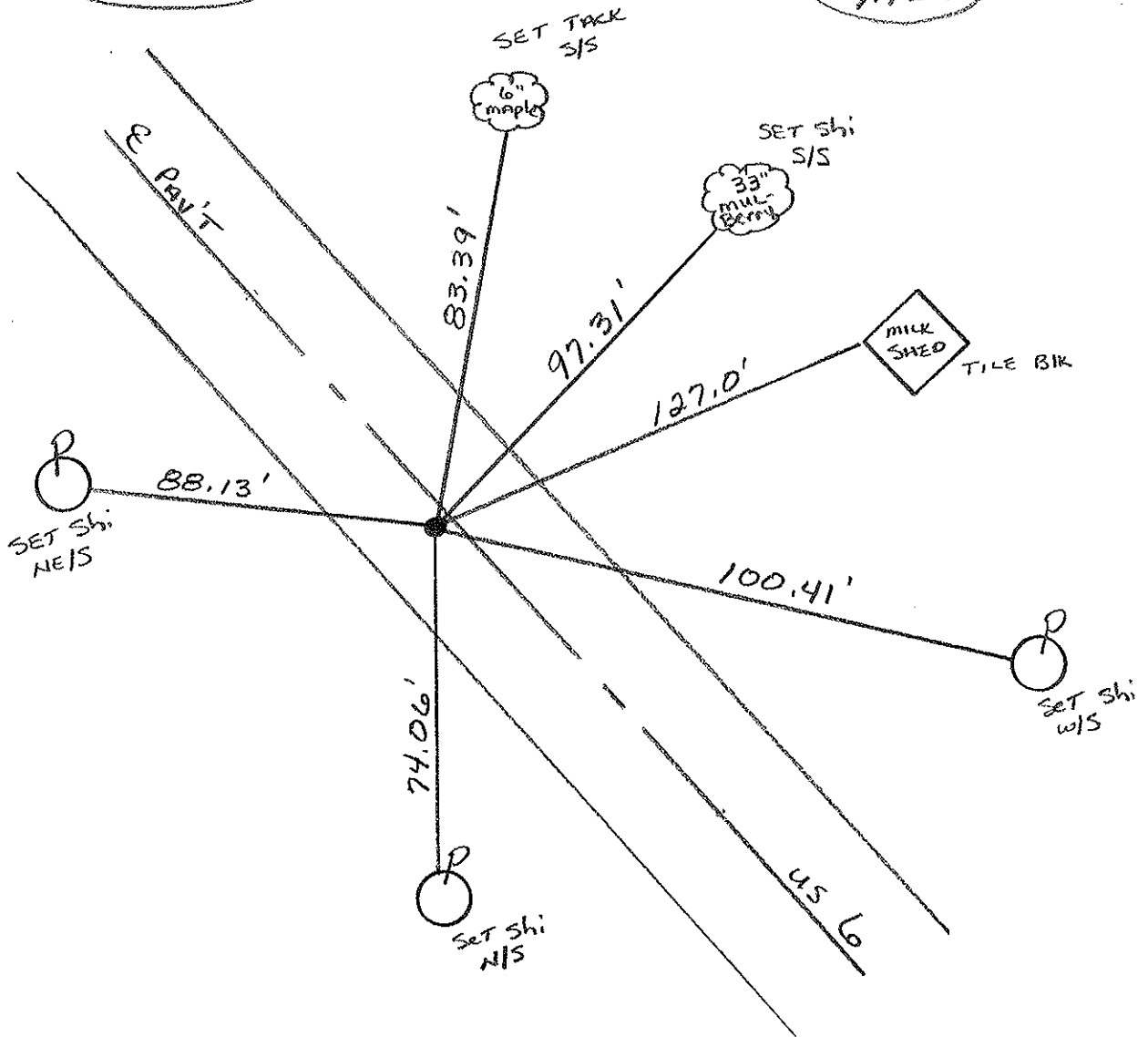
ROUTE US 6
 COUNTY HENRY
 TOWNSHIP FREEDOM
 SECTION 36
T 6 N R 6 E

TYPE MONUMENT 3/4" PIPE
 ON SURFACE - BELOW 6"
 SET - & PAV'T. - RIGHT 1.8'
9.8' TO RT EDGE PAVEMENT
 S.L.M. 381+93



RECORD: $PI = Sta. 382+98.13$
 $\Delta = 0^\circ - 26' - 30'' RT$

RESET PK/WASHER
 11-03-00
 MAB



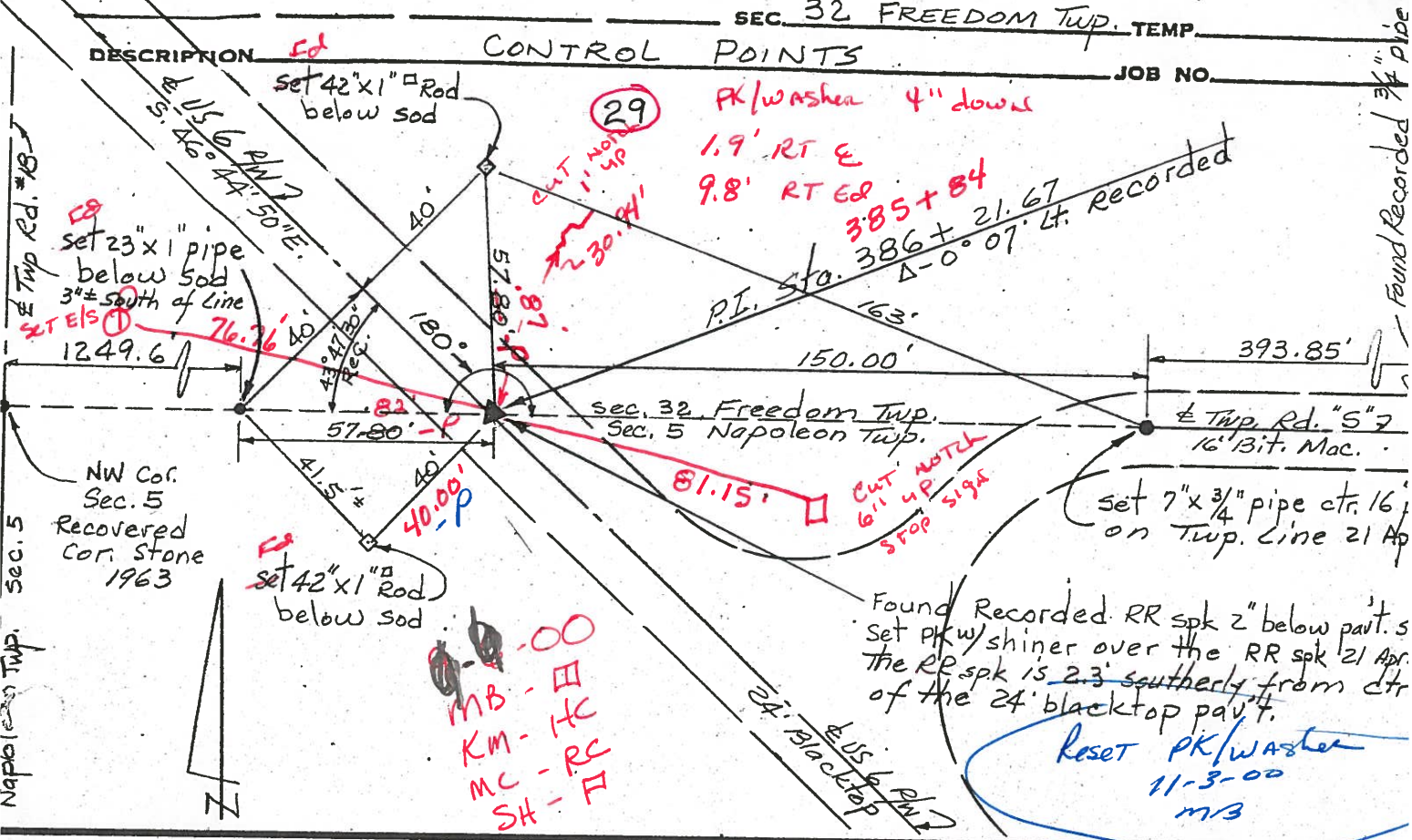
PERSONNEL	TITLE	PERSONNEL	TITLE
Red Beach			
W. Knappe			

COUNTY HENRY DATE 18 & 21 Apr. 1

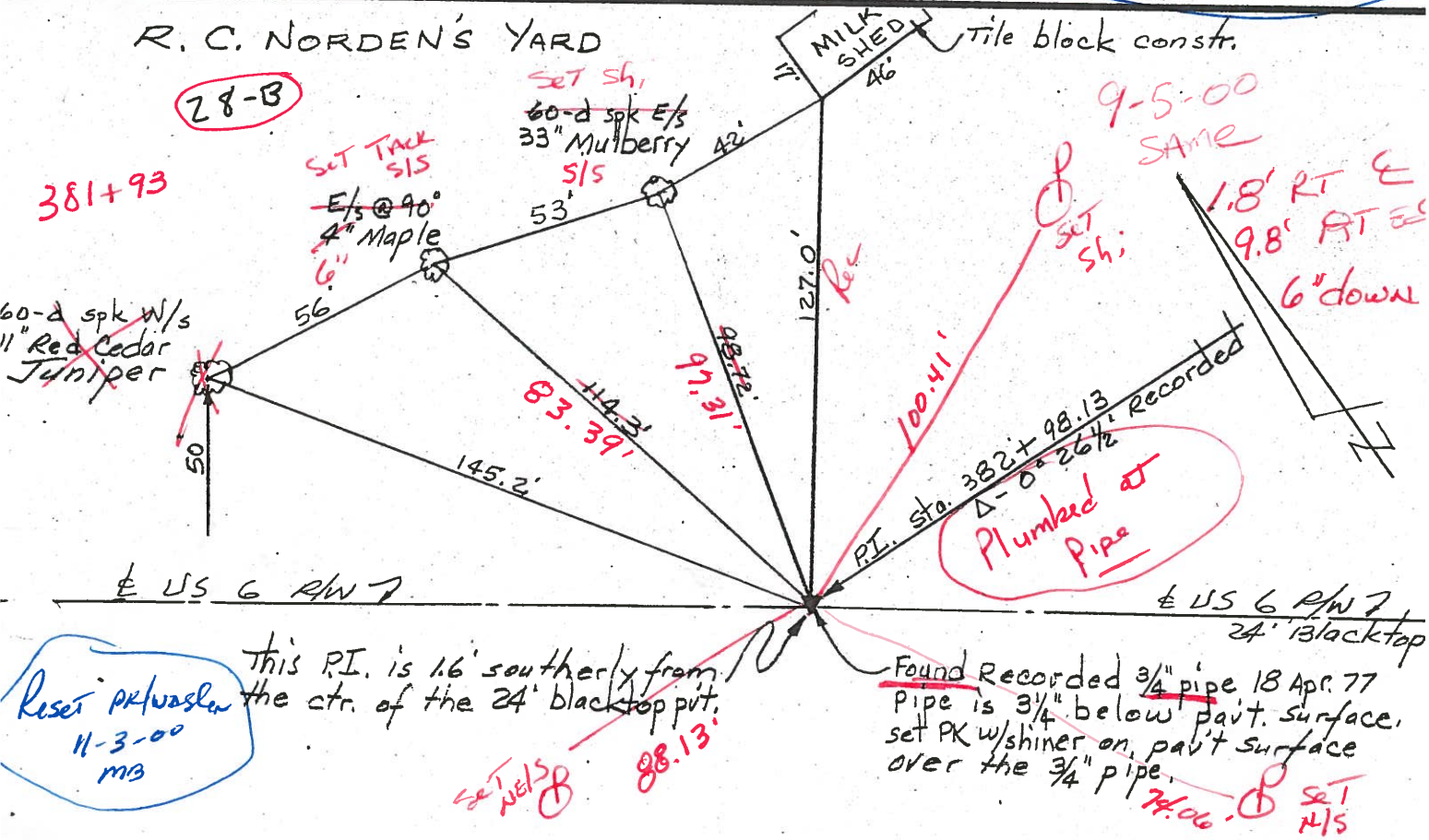
S. R. US 6 WEATHER _____

SEC. 32 FREEDOM TWP. TEMP. _____

DESCRIPTION Ed CONTROL POINTS JOB NO. _____



R. C. NORDEN'S YARD



Reset PK/washer 11-3-00 mrs

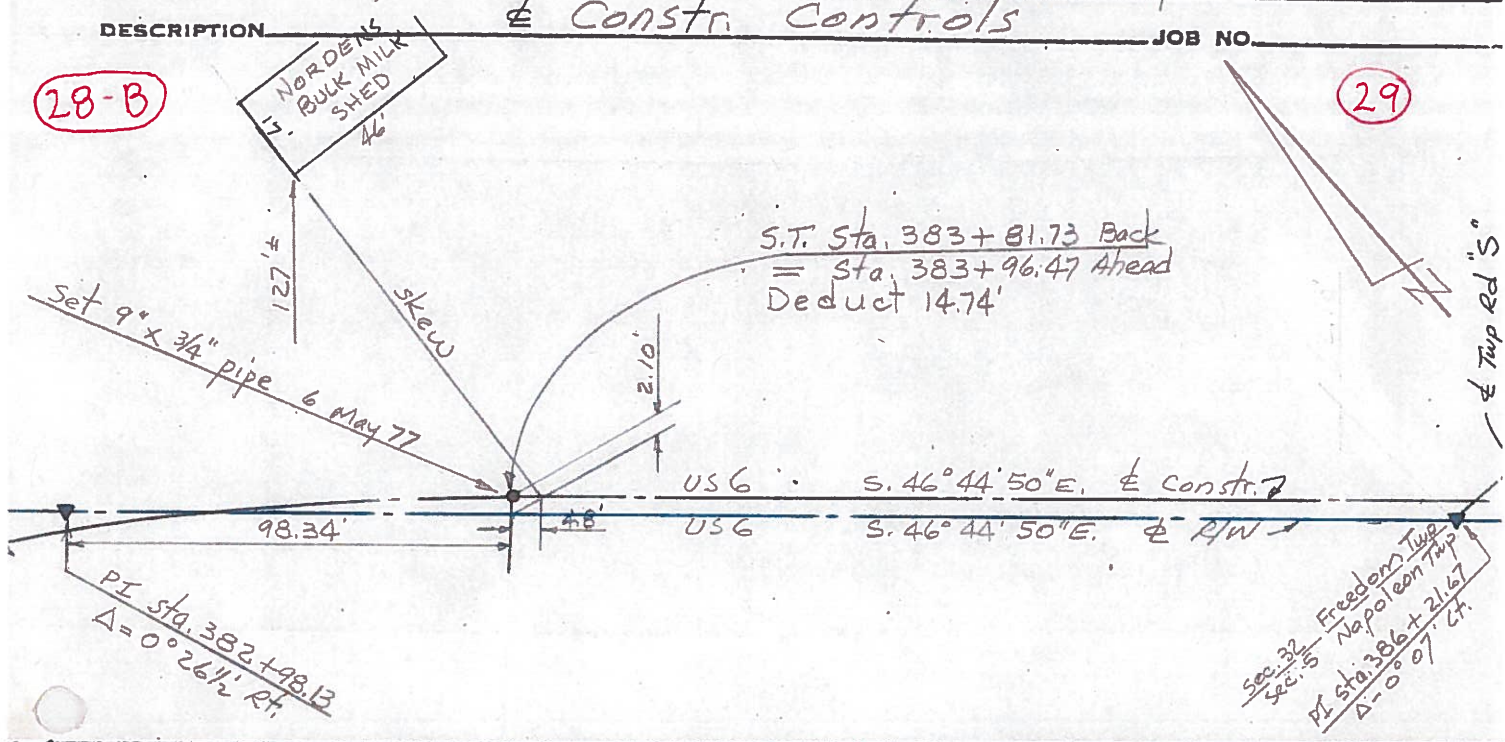
This P.I. is 1.6' southerly from the ctr. of the 24' blacktop pavt.

Found Recorded 3/4" pipe 18 Apr. 77 Pipe is 3/4" below pavt. surface, set PK/washer on pavt surface over the 3/4" pipe.

PERSONNEL	TITLE	PERSONNEL	TITLE	COUNTY	DATE
Red Beach				HENRY	MAY 77
W. Knape				US 6	
				SEC. SW 1/4 Sec. 32 Freedom Twp	
DESCRIPTION				WEATHER	TEMP
Constr Controls					
JOB NO.					

28-B

29



28-A

