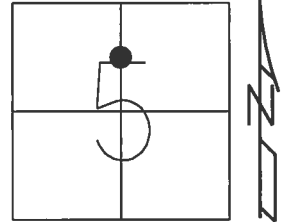


O.D.O.T. DISTRICT 2 SURVEY OFFICE (USE ONLY)

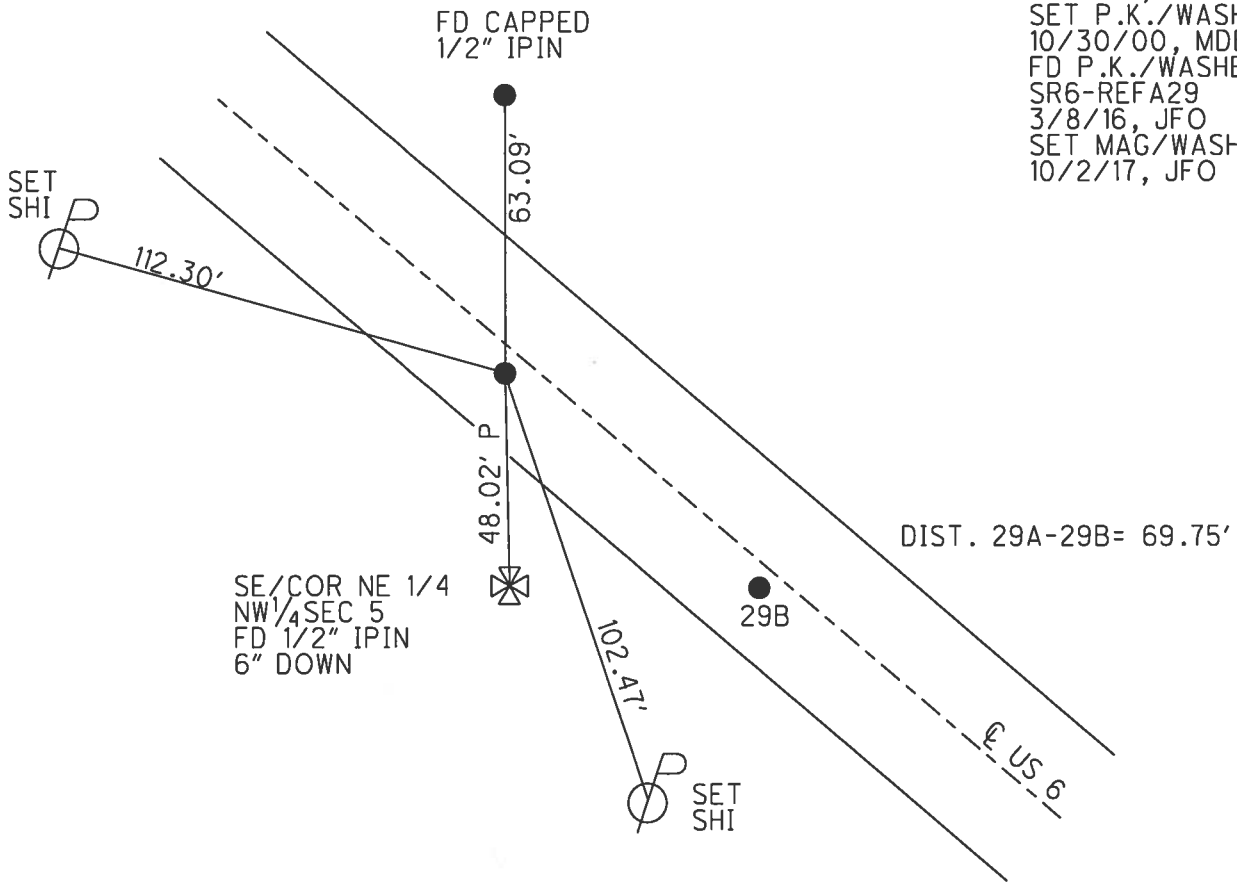
PERSONNEL _____ REFERENCE NO. 29 A SHEET 26 OF 37
 NOTES O'DONNELL DATE 10/2/17 ROUTE US 6
 H.C. LEU WEATHER SUNNY COUNTY HENRY
 R.C. FARKAS TEMP. 70° TOWNSHIP NAPOLEON
 _____ SECTION 5
 _____ T 5 N R 6 E

TYPE MONUMENT MAG/WASHER
 ON SURFACE - ~~BELOW~~ ON _____
~~LEFT~~ - CL PAV'T - RIGHT 2.3'
9.6' TO RT EDGE PAVEMENT
 S.L.M. 404+60.49



Grid: Northing: 644987.256 Easting: 1502564.350

RECORD: P.O.T.
 STA. 403+45
 FD P.K./WASHER
 4" DOWN
 9/6/00, MB
 SET P.K./WASHER
 10/30/00, MDB
 FD P.K./WASHER
 SR6-REFA29
 3/8/16, JFO
 SET MAG/WASHER
 10/2/17, JFO



O.D.O.T. DISTRICT 2 SURVEY OFFICE

PERSONNEL

REFERENCE NO. 29-B SHEET 24 OF 35

NOTES BARNHISEL

H.C. MOSE

R.C. CANTERBURY

HUSS F

DATE 9-6-00

WEATHER SUNNY

TEMP. +70°

ROUTE US 6

COUNTY HENRY

TOWNSHIP NAPOLEON

SECTION 5

T.5 N R.6 E

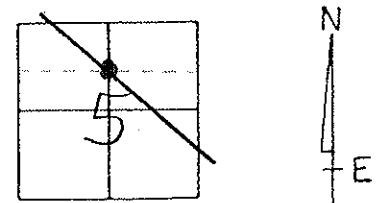
TYPE MONUMENT BOTH PK/WASHER

~~ON SURFACE~~ - BELOW 4" BOTH

~~LEFT - C~~ PAV'T. - RIGHT 2.3' BOTH

^{BOTH} 9.6' TO RT EDGE PAVEMENT

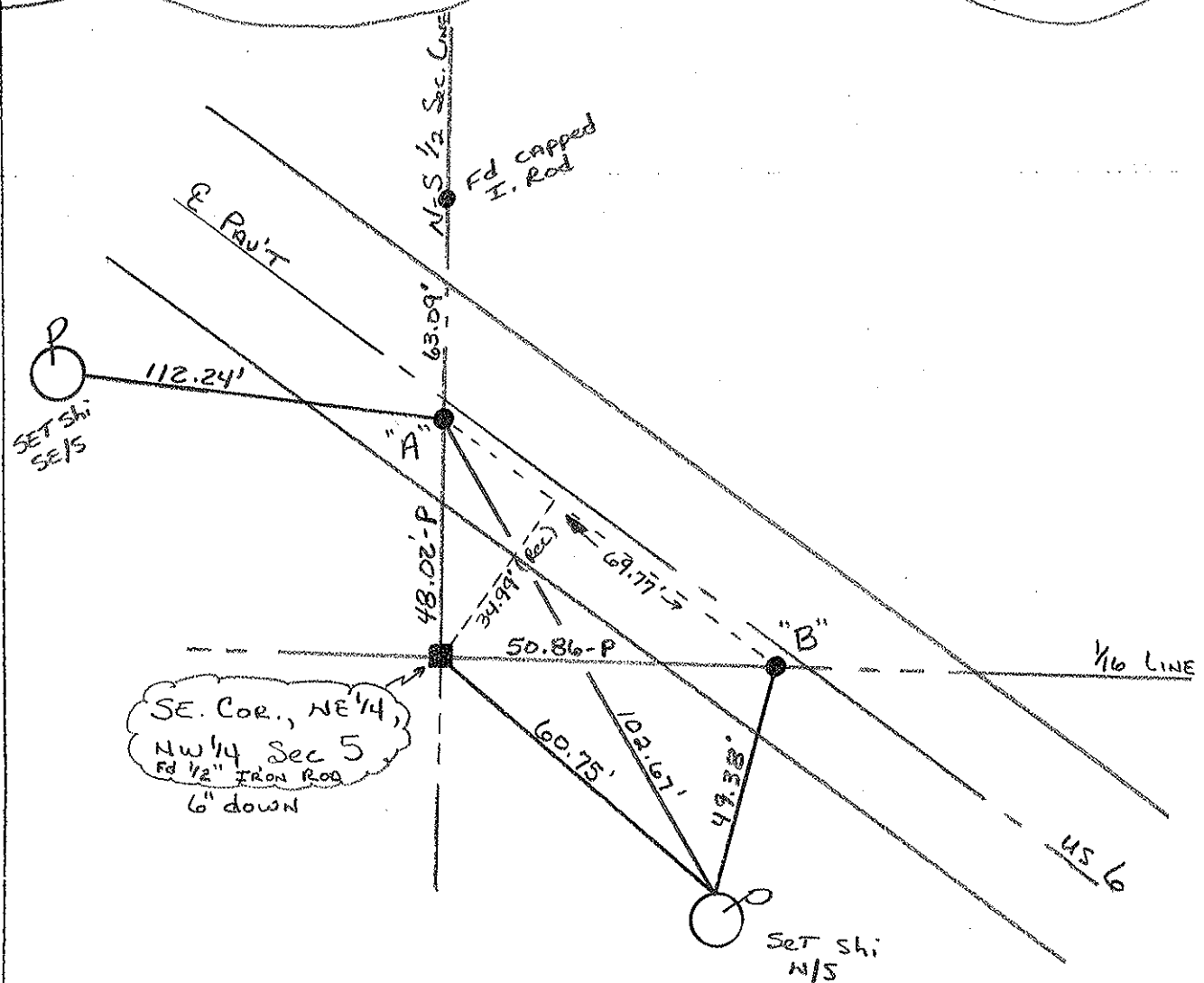
S.L.M. A = 403+45 B = 404+15



RECORD : "A" = POT - Sta. 404+52.85

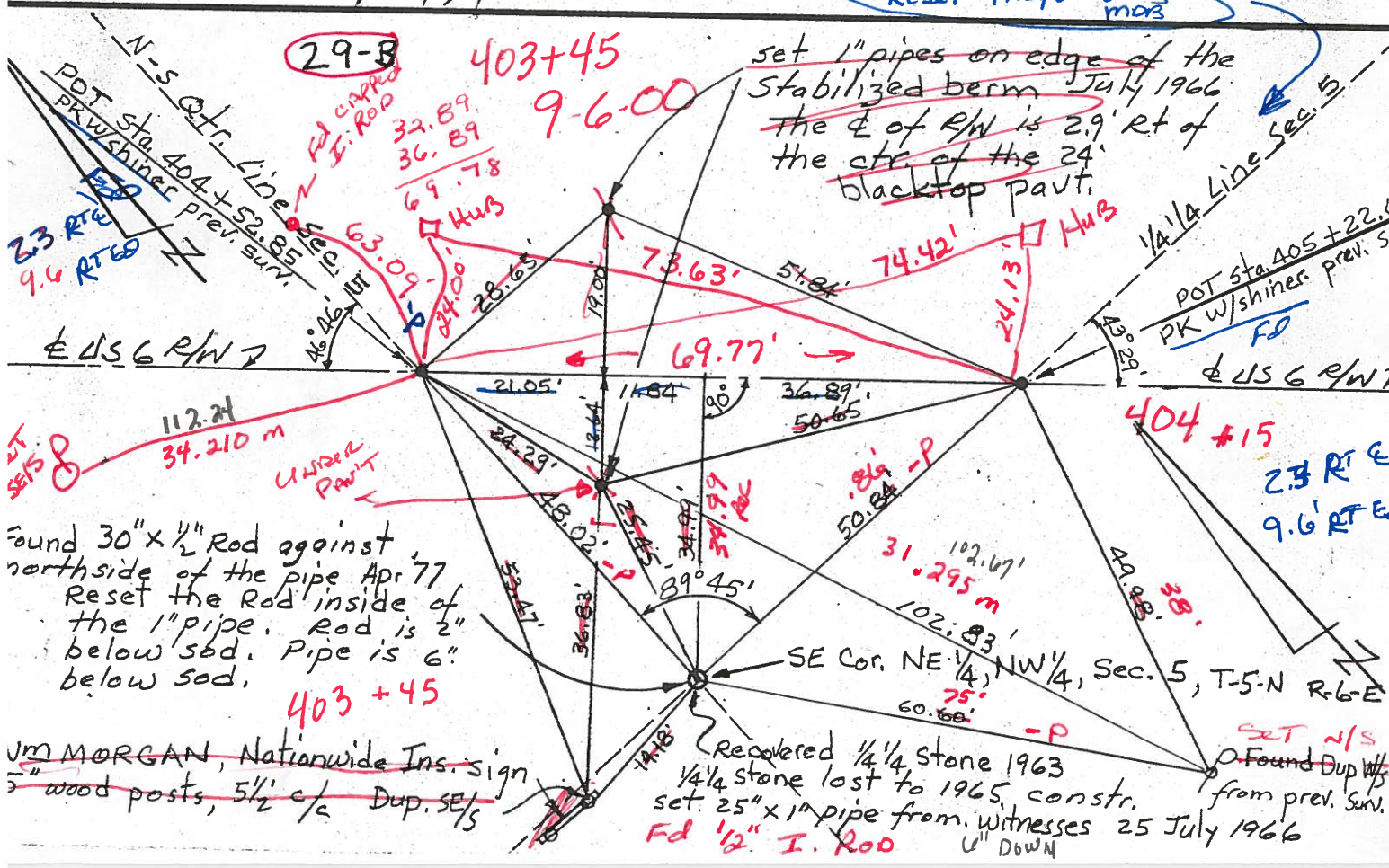
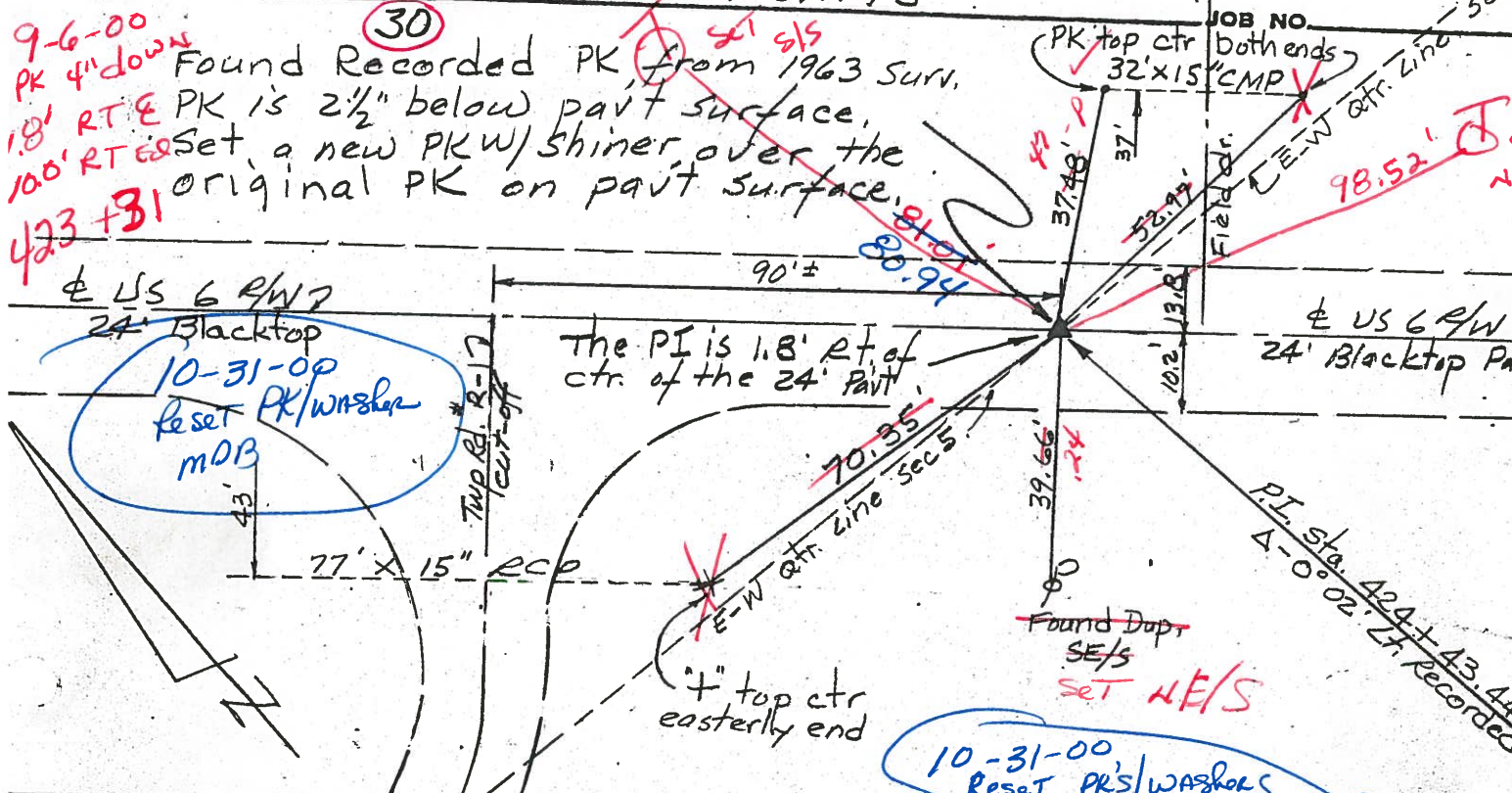
"B" = POT - Sta. 405+22.63

Reset PK's/Washer's
10-30-00
M O B



PERSONNEL TITLE PERSONNEL TITLE COUNTY HENRY DATE 26 Apr
 Red Beach W. Knape S. R. US 6 WEATHER
 SEC. 5 Napoleon Twp. TEMP

DESCRIPTION CONTROL POINTS



PERSONNEL TITLE PERSONNEL TITLE

Red Beach
Armbruster
Knappe
Mohler

COUNTY Henry DATE Aug '63

S. R. US # 6 WEATHER _____

SEC. NE 1/4 Sec. 5 TEMP. _____

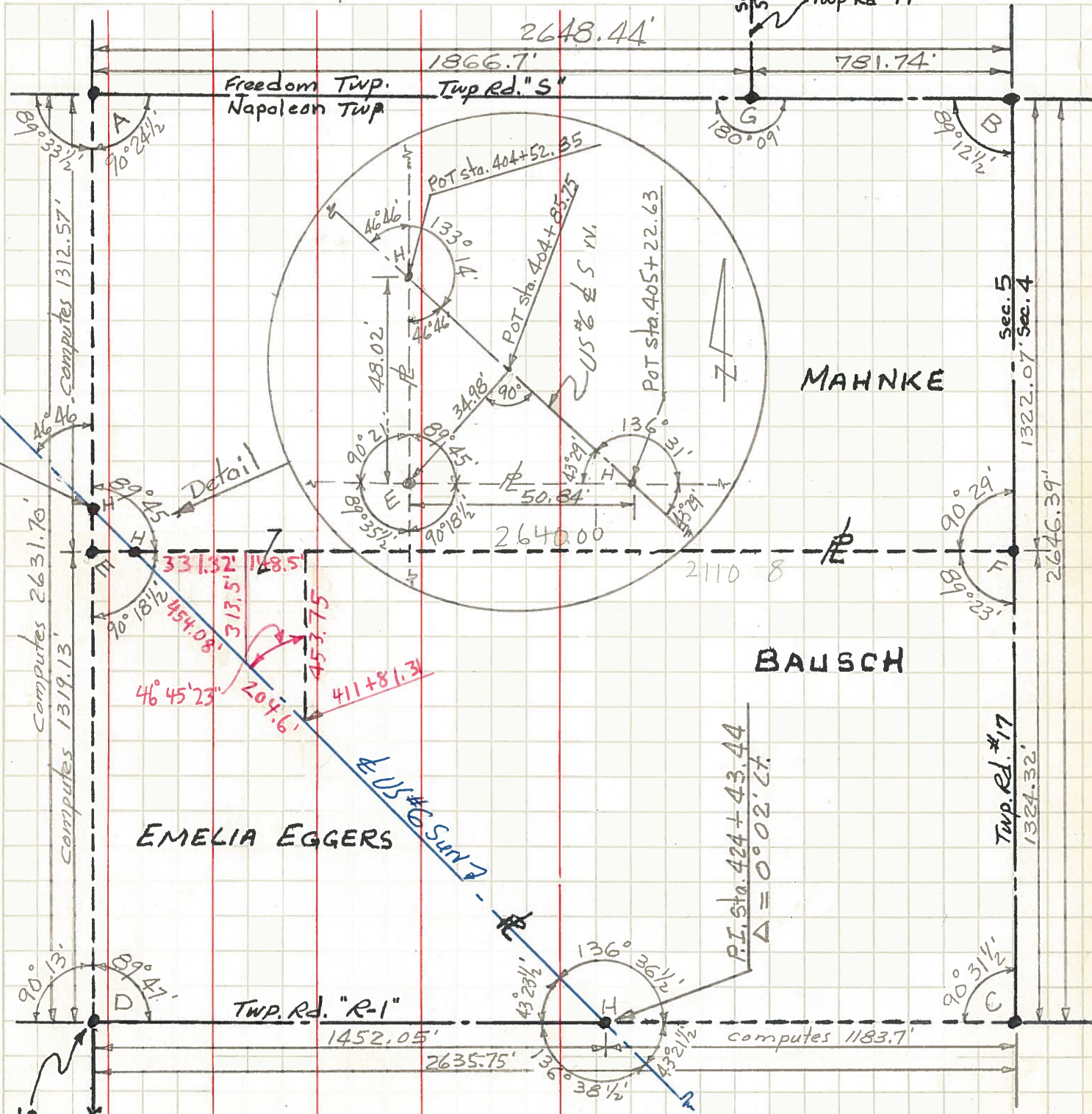
DESCRIPTION Napoleon Twp. T-5-N R-6-E

JOB NO. Twp Rd #17

LEFT

CENTER LINE

RIGHT



ctr. Post, Sec. 5

- A, B, C, E, F - Stones found from old recorded witnesses.
- D - stone - made diligent but futile search. Projected line to the section E & W. Used good one. Cor Post on S. E.
- G - Found Stone to old recorded witnesses.
- H - PK's used on survey