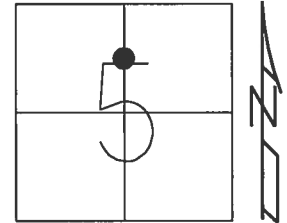


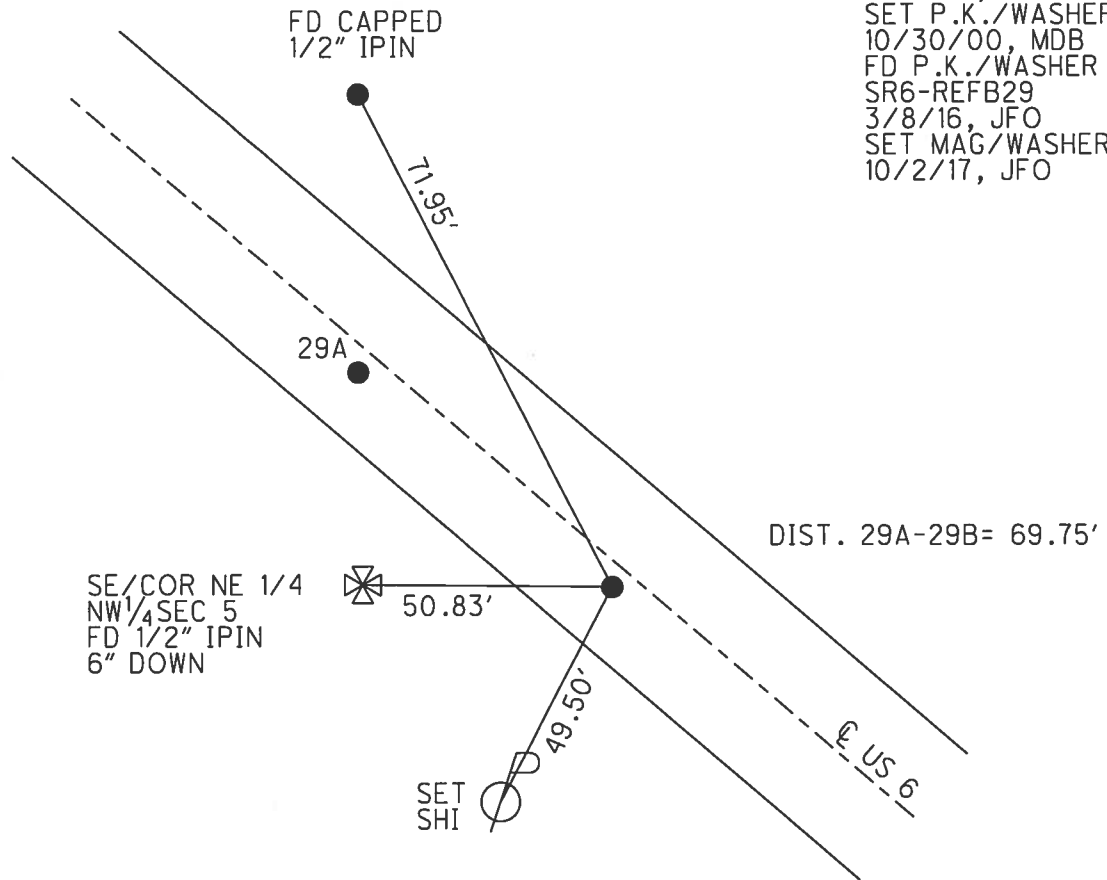
O.D.O.T. DISTRICT 2 SURVEY OFFICE (USE ONLY)

PERSONNEL	REFERENCE NO.	29 B	SHEET	27	OF	37
NOTES	O'DONNELL	DATE	10/2/17	ROUTE	US 6	
H.C.	LEU	WEATHER	SUNNY	COUNTY	HENRY	
R.C.	FARKAS	TEMP.	70°	TOWNSHIP	NAPOLEON	
				SECTION	5	
				T	5	N
				R	6	E

TYPE MONUMENT MAG/WASHER
 ON SURFACE - ~~BELOW~~ ON
~~LEFT~~ - Q PAV'T - RIGHT 2.3'
9.6' TO RT EDGE PAVEMENT
 S.L.M. 405+30.24
 Grid: Northing: 644938.056 Easting: 1502613.784



RECORD: P.O.T.
 STA. 405+22.63
 FD P.K./WASHER
 4" DOWN
 9/6/00, MB
 SET P.K./WASHER
 10/30/00, MDB
 FD P.K./WASHER
 SR6-REFB29
 3/8/16, JFO
 SET MAG/WASHER
 10/2/17, JFO



O.D.O.T. DISTRICT 2 SURVEY OFFICE

PERSONNEL

REFERENCE NO. 29-B SHEET 24 OF 35

NOTES BARNHISEL

H.C. MOSE

R.C. CANTERBURY

Huss F

DATE 9-6-00

WEATHER SUNNY

TEMP. +70°

ROUTE US 6

COUNTY HENRY

TOWNSHIP NAPOLEON

SECTION 5

T.5 N R.6 E

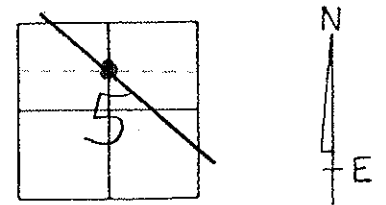
TYPE MONUMENT BOTH PK/WASHER

~~ON SURFACE~~ - BELOW 4" BOTH

~~LEFT - & PAV'T. - RIGHT~~ 2.3' BOTH

^{BOTH} 9.6' TO RT EDGE PAVEMENT

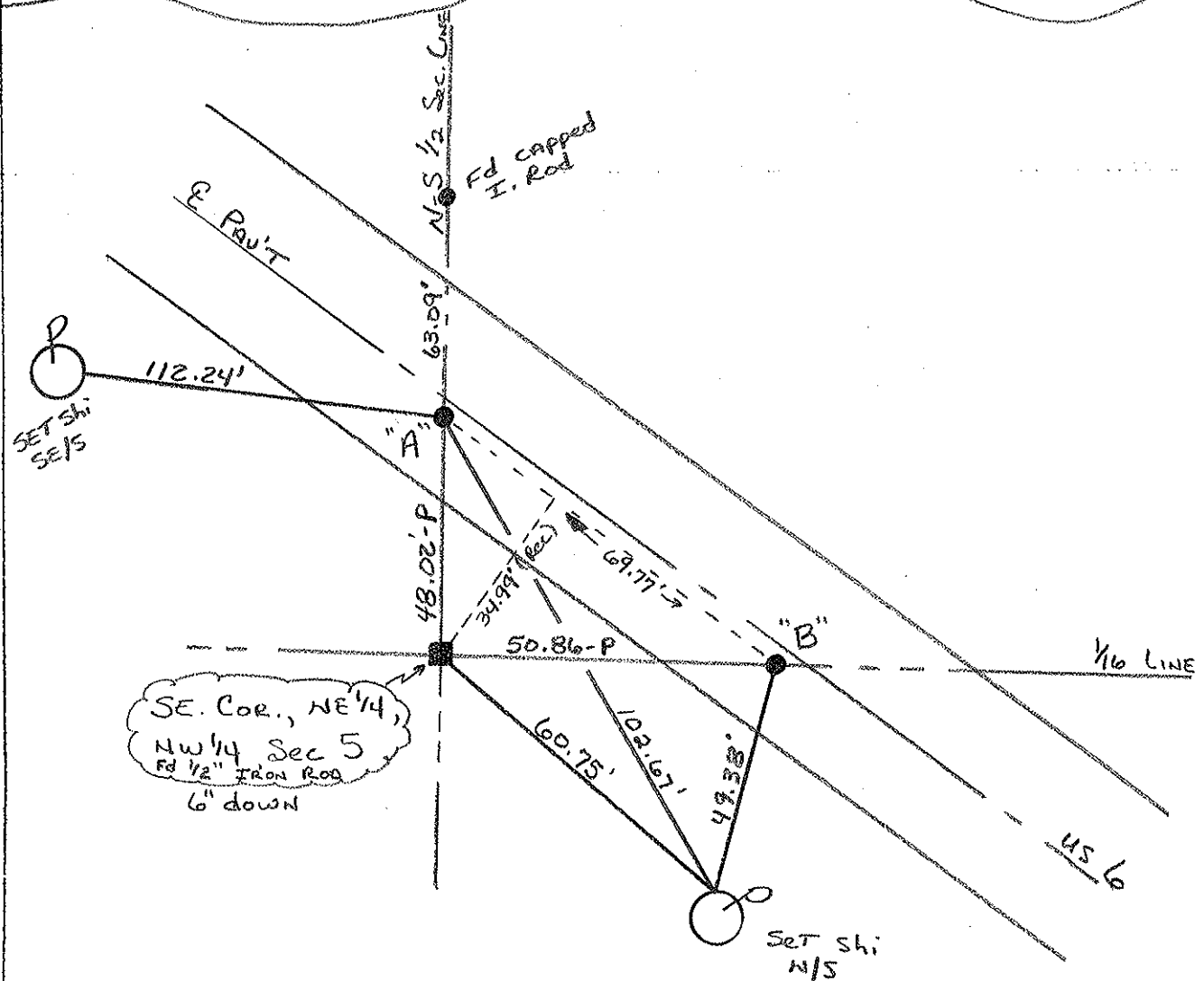
S.L.M. A = 403+45 B = 404+15



RECORD : "A" = POT - Sta. 404+52.85

"B" = POT - Sta. 405+22.63

Reset PK's/Washer's
10-30-00
M O B



PERSONNEL TITLE PERSONNEL TITLE COUNTY HENRY DATE 26 Apr
 Red Beach W. Knape S. R. US 6 WEATHER
 SEC. 5 Napoleon Twp. TEMP

DESCRIPTION CONTROL POINTS

