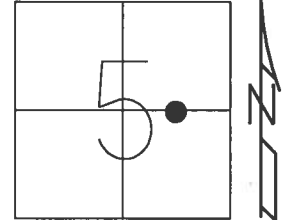


O.D.O.T. DISTRICT 2 SURVEY OFFICE (USE ONLY)

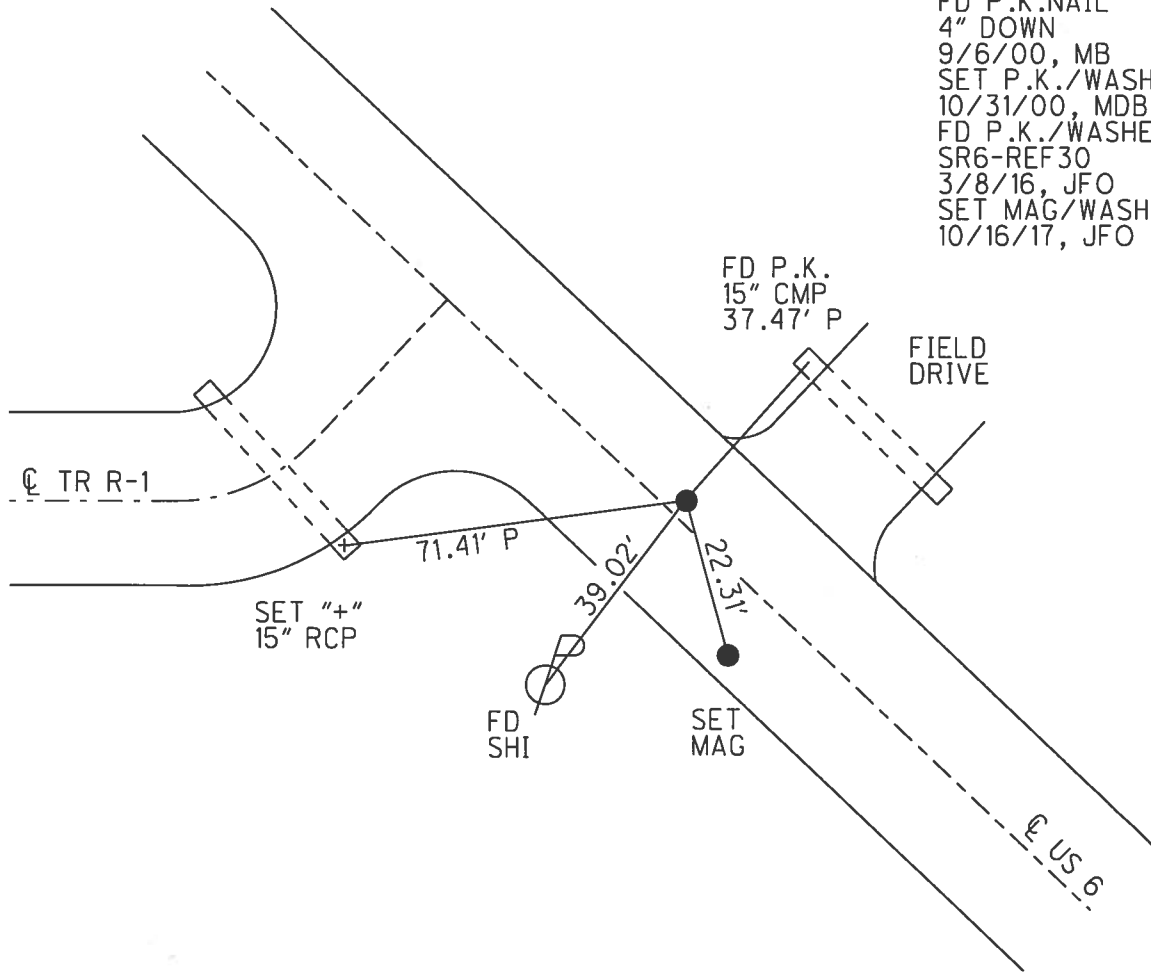
PERSONNEL _____ REFERENCE NO. 30 SHEET 28 OF 37
 NOTES O'DONNELL DATE 10/16/17 ROUTE US 6
 H.C. LEU WEATHER SUNNY COUNTY HENRY
 R.C. FARKAS TEMP. 47° TOWNSHIP NAPOLEON
 _____ SECTION 5
 _____ T 5 N R 6 E

TYPE MONUMENT MAG/WASHER
 ON SURFACE - ~~BELOW~~ ON
~~LEFT~~ - CL PAV'T - RIGHT 2.2'
10' TO RT EDGE PAVEMENT
 S.L.M. 424+51.20



Grid: Northing: 643585.729 Easting: 1503978.084

RECORD: P.I.
 STA. 424+43.44
 $\Delta = 0^{\circ} 02' LT$
 FD P.K.NAIL
 4" DOWN
 9/6/00, MB
 SET P.K./WASHER
 10/31/00, MDB
 FD P.K./WASHER
 SR6-REF 30
 3/8/16, JFO
 SET MAG/WASHER
 10/16/17, JFO



FD SHI

SET MAG

FD P.K.
 15" CMP
 37.47' P

FIELD DRIVE

CL TR R-1

SET "+"
 15" RCP

71.41' P

39.02'

22.31'

CL US 6

O.D.O.T. DISTRICT 2 SURVEY OFFICE

PERSONNEL

REFERENCE NO. 30

SHEET 25 OF 35

NOTES BARNHISEL

H.C. MOSEK

R.C. CANTERBURY

HUSS P

DATE 9-6-00

WEATHER SUNNY

TEMP. +70°

ROUTE US 6

COUNTY HENRY

TOWNSHIP NAPOLEON

SECTION 5

T.5 N. R. 6 E

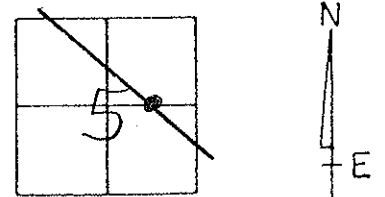
TYPE MONUMENT PK NAIL

~~ON SURFACE~~ - BELOW 4"

LEFT - & PAV'T. - RIGHT 1.8'

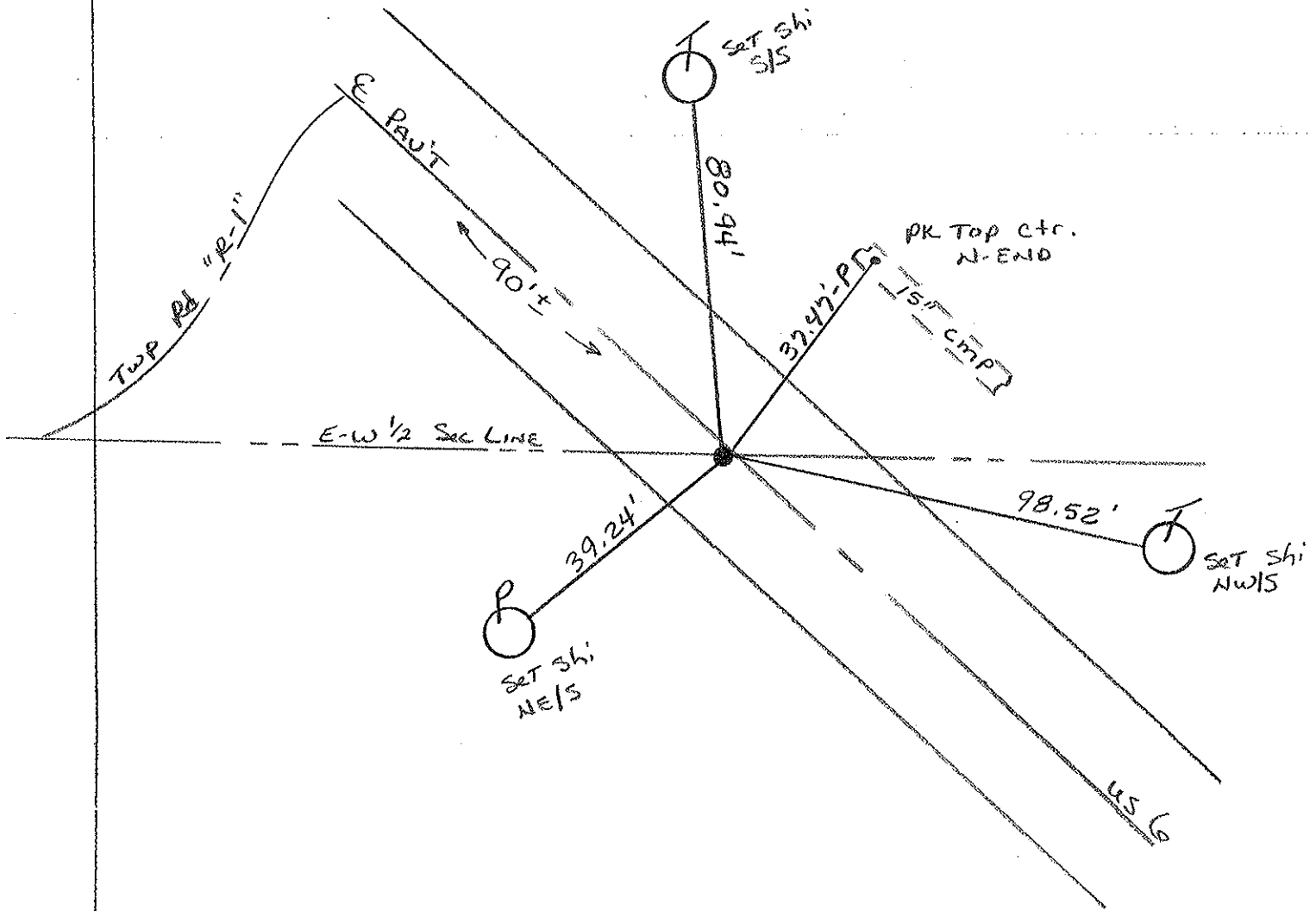
10.0' TO RT. EDGE PAVEMENT

S.L.M. 423+31



Record : PI - Sta. 424+43.44
 $\Delta = 0^{\circ} 02' \text{ LT}$

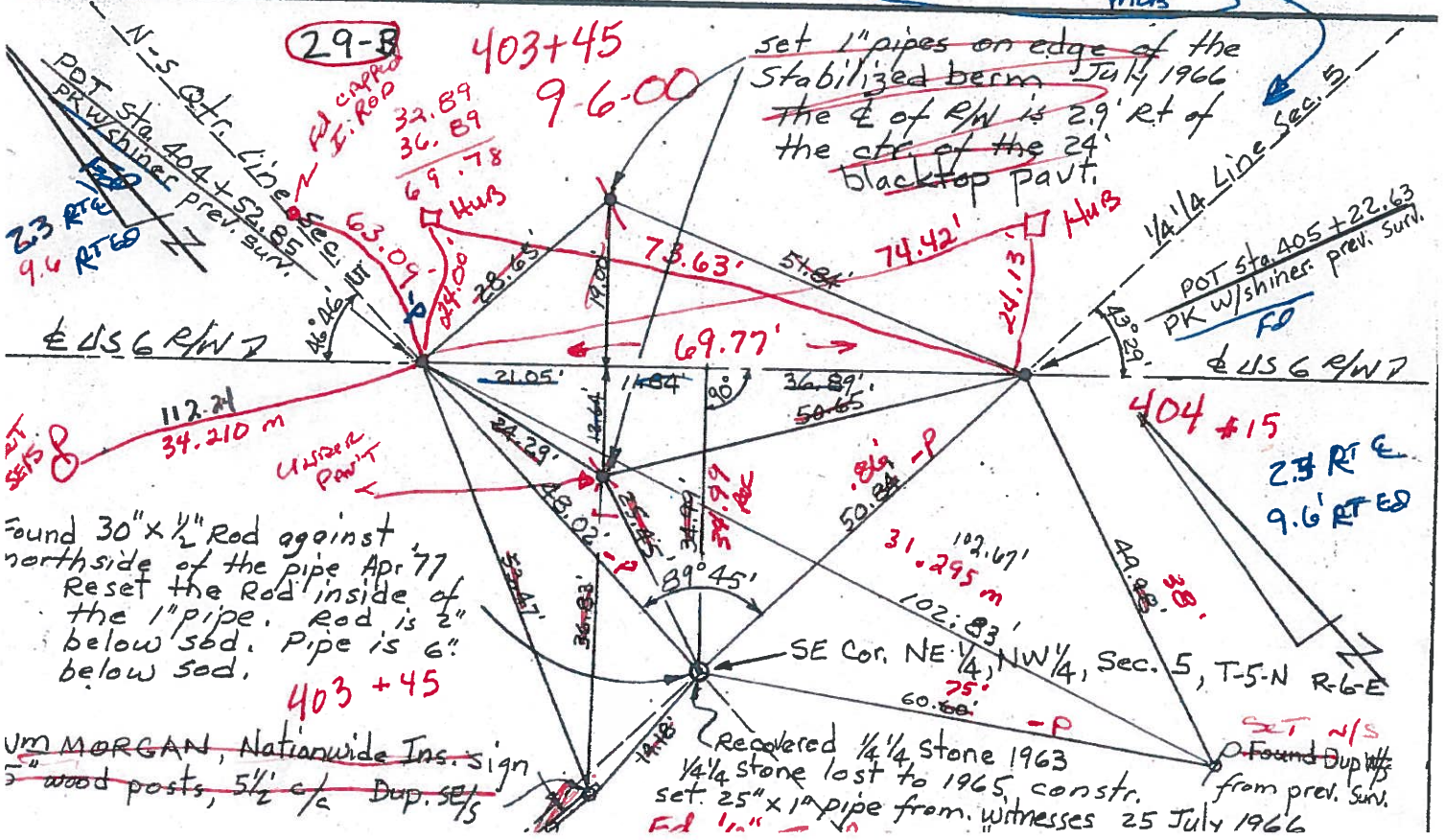
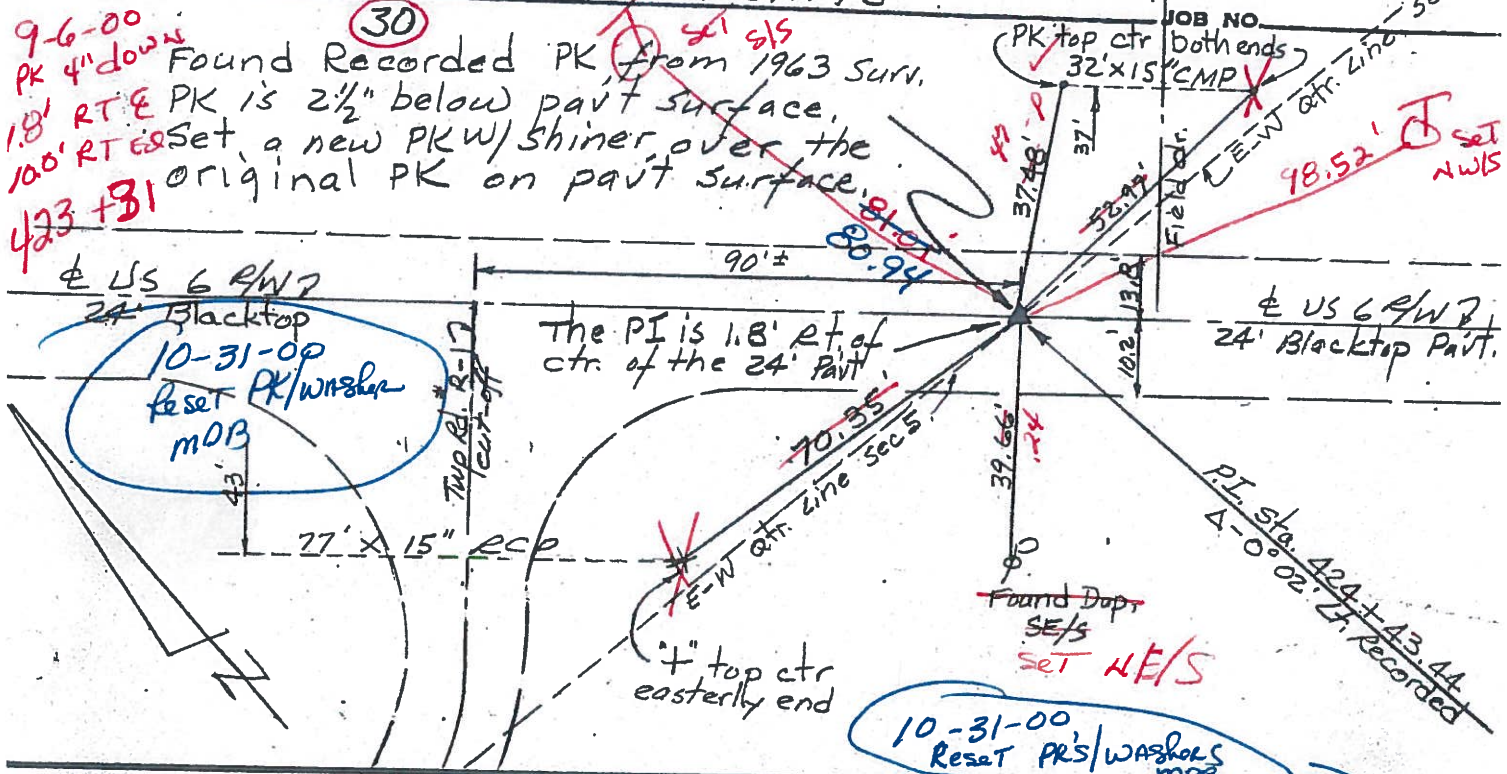
Reset PK/Washer
 10-31-00
 mDB



PERSONNEL TITLE PERSONNEL TITLE COUNTY HENRY DATE 26 Apr 77
 Red Beach W. Knape
 S. R. US 6 WEATHER
 SEC. 5 Napoleon Twp. TEMP

DESCRIPTION CONTROL POINTS

9-6-00 PK 4" down
 1.8' RT E PK is 2 1/2" below pavt surface.
 100' RT E Set a new PK w/ shiner over the original PK on pavt surface.
 423 + 31



UM MORGAN, Nationwide Ins. sign
 5 wood posts, 5 1/2 c/a Dup. SE/S
 SET N/S Found Dup w/ from prev. Surv.