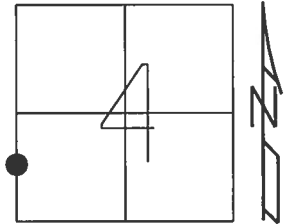


O.D.O.T. DISTRICT 2 SURVEY OFFICE (USE ONLY)

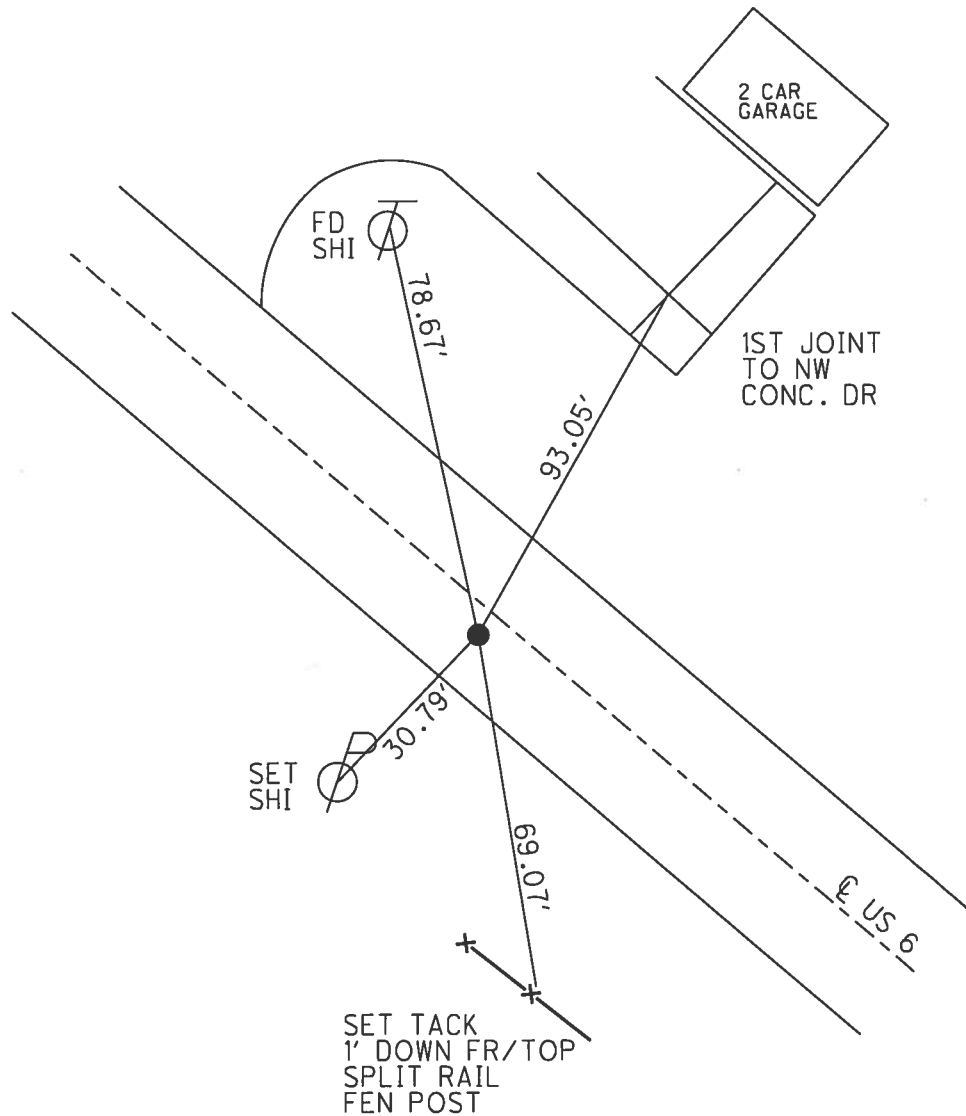
PERSONNEL _____ REFERENCE NO. 31 A SHEET 30 OF 37
 NOTES O'DONNELL DATE 10/16/17 ROUTE US 6
 H.C. LEU WEATHER SUNNY COUNTY HENRY
 R.C. FARKAS TEMP. 47° TOWNSHIP NAPOLEON
 SECTION 4
 T 5 N R 6 E

TYPE MONUMENT MAG/WASHER
 ON SURFACE - ~~BELOW~~ ON
~~LEFT~~ - Q PAV'T - RIGHT 3.8'
8.6' TO RT EDGE PAVEMENT
 S.L.M. 443+61.55



Grid: Northing: 642237.222 Easting: 1505331.153

RECORD: P.O.T.
 STA. 443+53.46
 FD P.K./WASHER
 4" DOWN
 9/7/00, MB
 SET P.K./WASHER
 11/06/00, MDB
 FD P.K./WASHER
 SR6-REFA31
 3/9/16, JFO
 SET MAG/WASHER
 10/16/17, JFO



O.D.O.T. DISTRICT 2 SURVEY OFFICE

PERSONNEL

REFERENCE NO. 31-A

SHEET 27 OF 35

NOTES BARNHISEL

H.C. MOSEK

R.C. CANTERBURY

Huss P

DATE 9-7-00

WEATHER SUNNY

TEMP. +70°

ROUTE US 6

COUNTY HENRY

TOWNSHIP NAPOLEON

SECTION 4

T.5 N. R. 6 E

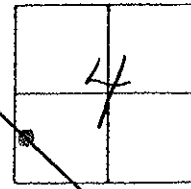
TYPE MONUMENT PK/Washer

ON SURFACE - BELOW 4"

LEFT - & PAW'T. - RIGHT 3.0'

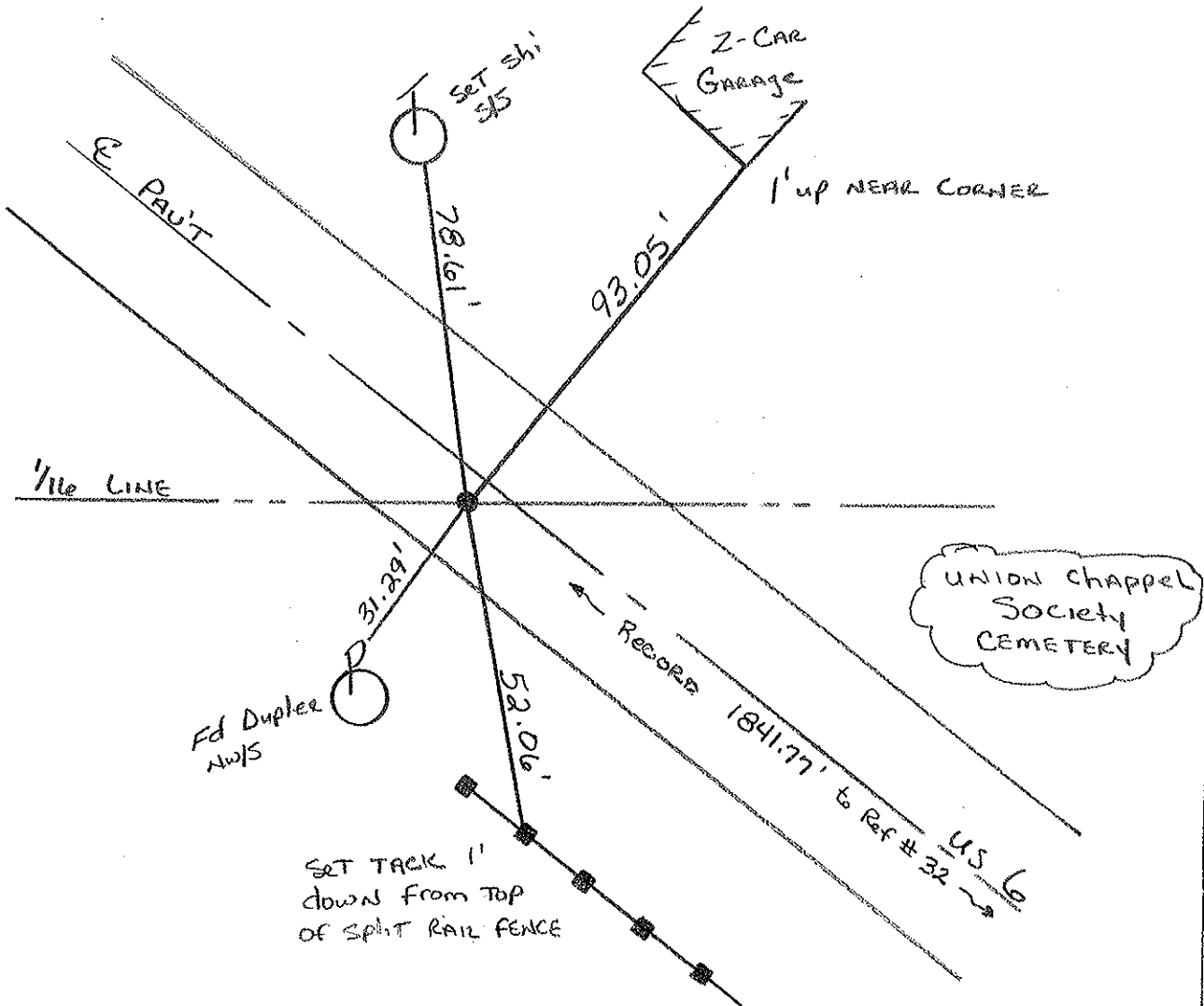
8.6' TO RT EDGE PAVEMENT

S.L.M. 442+38

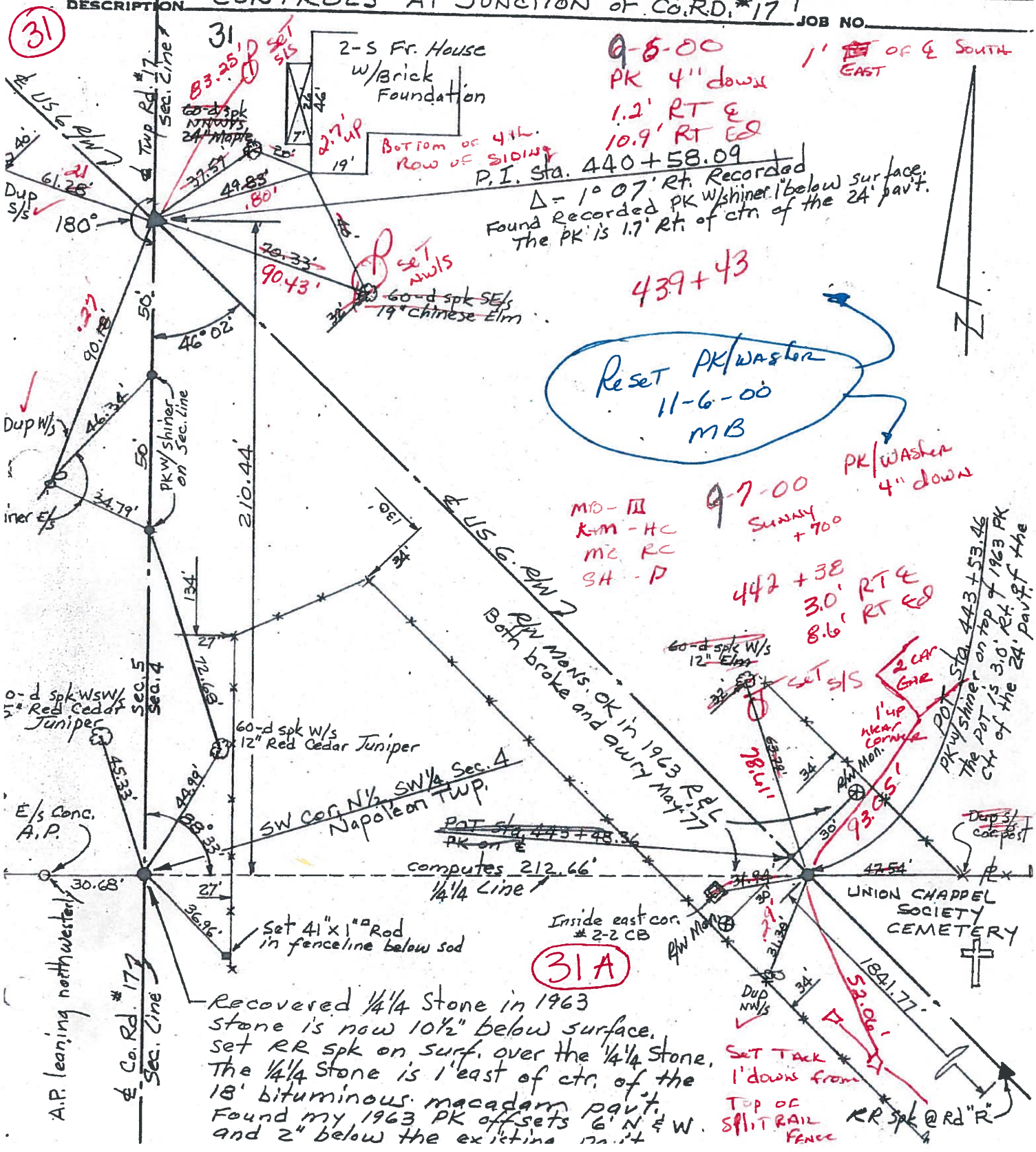


Record: POT = STA. 443+53.46

Reset PK/WASHER
11-06-00
MOB



PERSONNEL	TITLE	PERSONNEL	TITLE	COUNTY	DATE	WEATHER	TEMP.	JOB NO.
Red Beach				HENRY	2/3 May 1977			
W. Knape				US 6				
DESCRIPTION				SEC. 4 (Pt.) Napoleon Twp				
				CONTROLS AT JUNCTION OF Co. RD. #17				



(31)

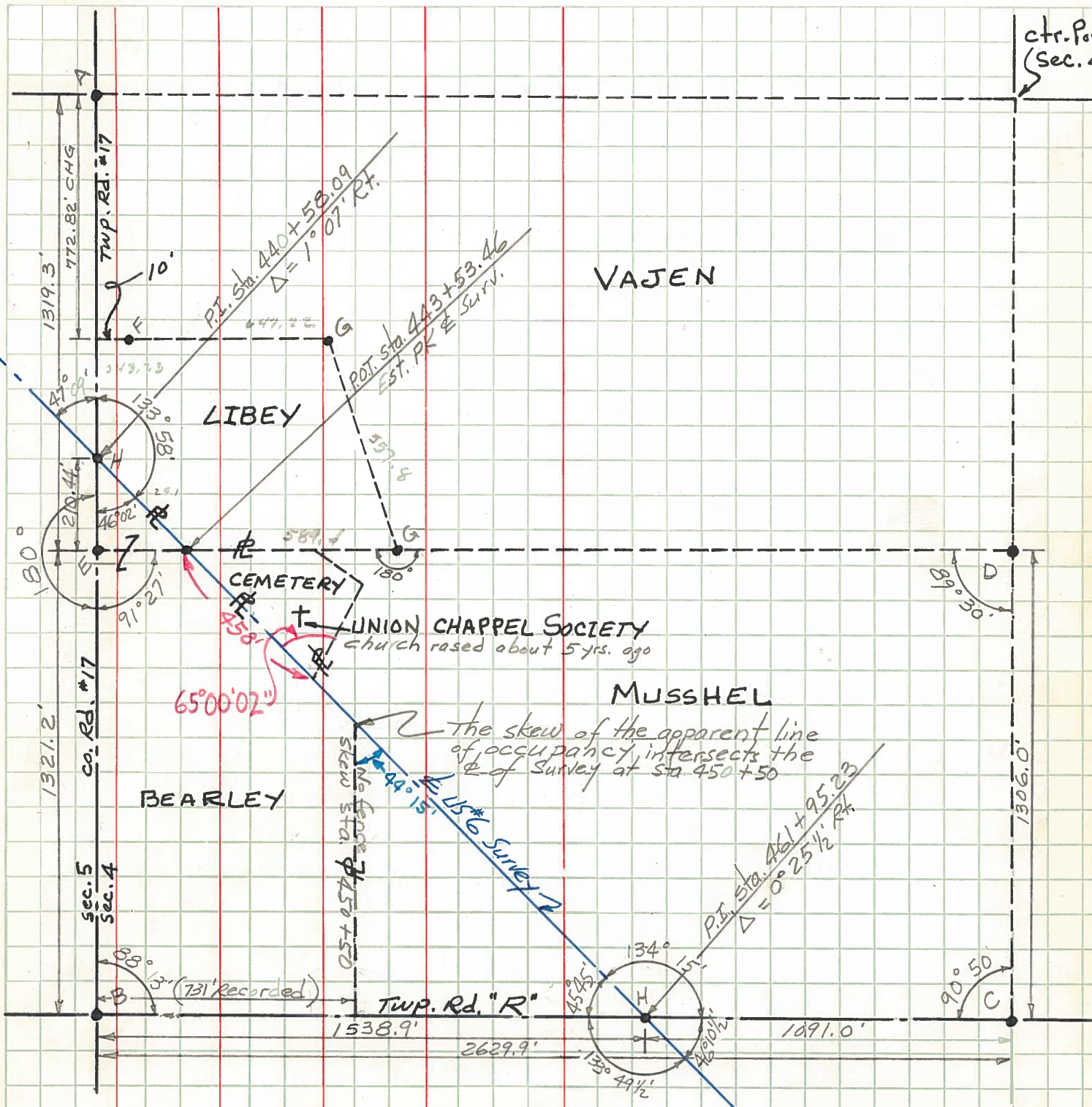
439+43
Reset PK/washer
11-6-00
MB

(31A)

Recovered 1/4 1/4 Stone in 1963
stone is now 10 1/2" below surface.
set RR spk on surf. over the 1/4 1/4 Stone.
The 1/4 1/4 Stone is 1' east of ctr. of the
18' bituminous macadam pavt.
Found my 1963 PK offsets 6' N & W.
and 2" below the existing point

Set Tack
1' down from
TOP OF
SPLIT RAIL
FENCE
RR Spk @ Rd "R"

PERSONNEL	TITLE	PERSONNEL	TITLE	COUNTY	DATE
Red Beach				Henry	Sept. '63
Armbruster				S. R. US #6	WEATHER
Knappe				SEC. SW 1/4 Sec. 4	TEMP.
Mohler				DESCRIPTION Napoleon Twp. T-5-N R-6-E	JOB NO.
	LEFT		CENTER LINE		RIGHT



A, B, C, D, E - Stones found from recorded references and old witnesses
 F - Found RR spk, see Gerkens Surv. (1951) Vol. 6 p. 77 Henry Co. Engr. Off
 G - Found 1/2" I. pipes, See Gerkens 1951 Surv. Vol. 6, p. 77, Henry Co. Engr. Off
 H - RR spks. Est. on E Survey.