

O.D.O.T. DISTRICT 2 SURVEY OFFICE (USE ONLY)

PERSONNEL \_\_\_\_\_ REFERENCE NO. 32 SHEET 31 OF 37

NOTES O'DONNELL DATE 10/16/17 ROUTE US 6  
 H.C. LEU WEATHER SUNNY COUNTY HENRY  
 R.C. FARKAS TEMP. 47° TOWNSHIP NAPOLEON  
 SECTION 4  
 T 5 N R 6 E

TYPE MONUMENT MAG/WASHER

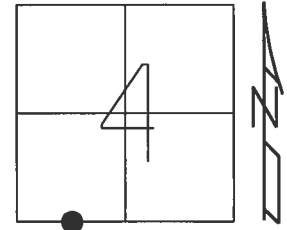
ON SURFACE - ~~BELOW~~ ON \_\_\_\_\_

~~LEFT~~ - ☉ PAV'T - RIGHT 3'

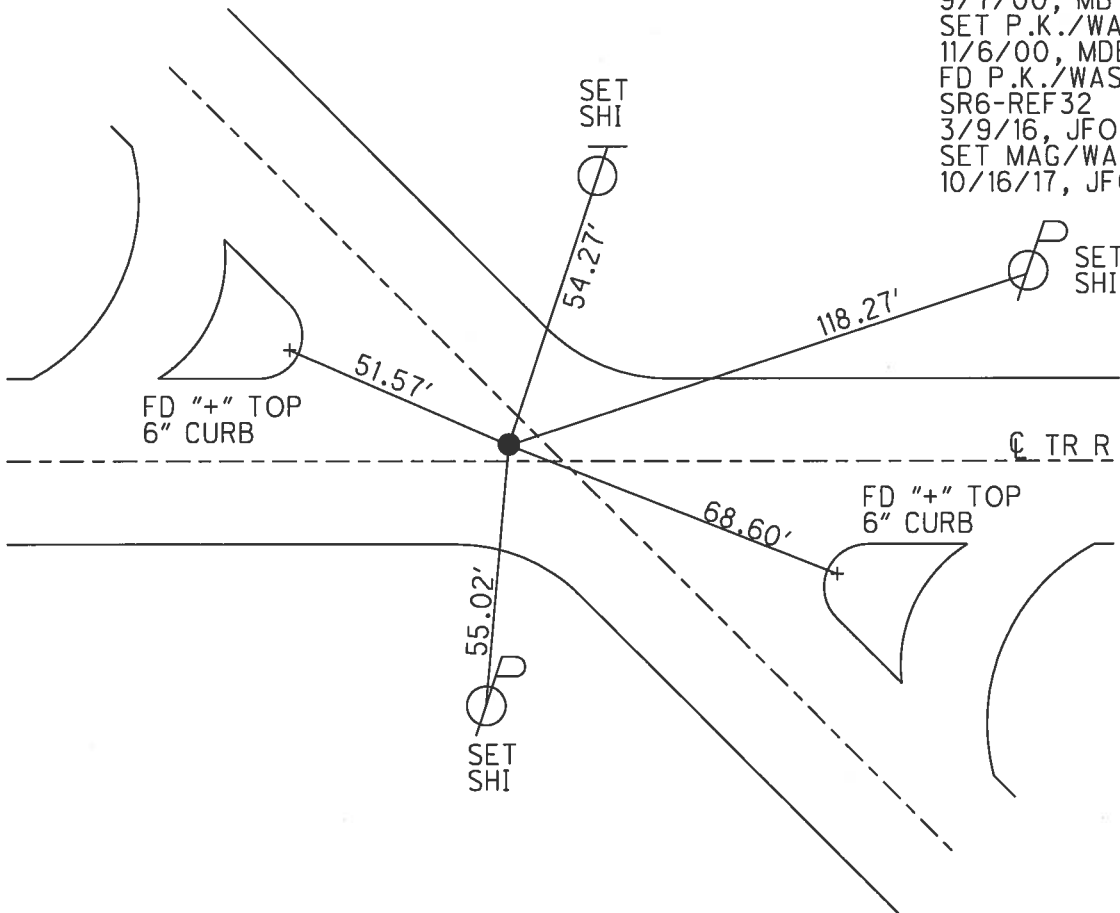
9.2' TO RT EDGE PAVEMENT

S.L.M. 462+03.29

Grid: Northing: 640915.701 Easting: 1506613.964



RECORD: P.I.  
 STA. 460+78  
 FD LG.R.R.SPIKE  
 5" DOWN  
 9/7/00, MB  
 SET P.K./WASHER  
 11/6/00, MDB  
 FD P.K./WASHER  
 SR6-REF32  
 3/9/16, JFO  
 SET MAG/WASHER  
 10/16/17, JFO



# O.D.O.T. DISTRICT 2 SURVEY OFFICE

PERSONNEL

REFERENCE NO. 32

SHEET 28 OF 35

NOTES BARNHISEL

H.C. MOSEK

R.C. CANTERBURY

Huss F

DATE 9-7-00

WEATHER SUNNY

TEMP. +70°

ROUTE US 6

COUNTY HENRY

TOWNSHIP NAPOLEON

SECTION 4

T.5 N. R. 6 E

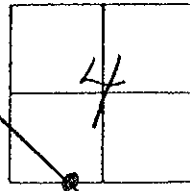
TYPE MONUMENT Log RR SPIKE

~~ON SURFACE~~ - BELOW 5"

LEFT - CL PAV'T. - RIGHT 2.8'

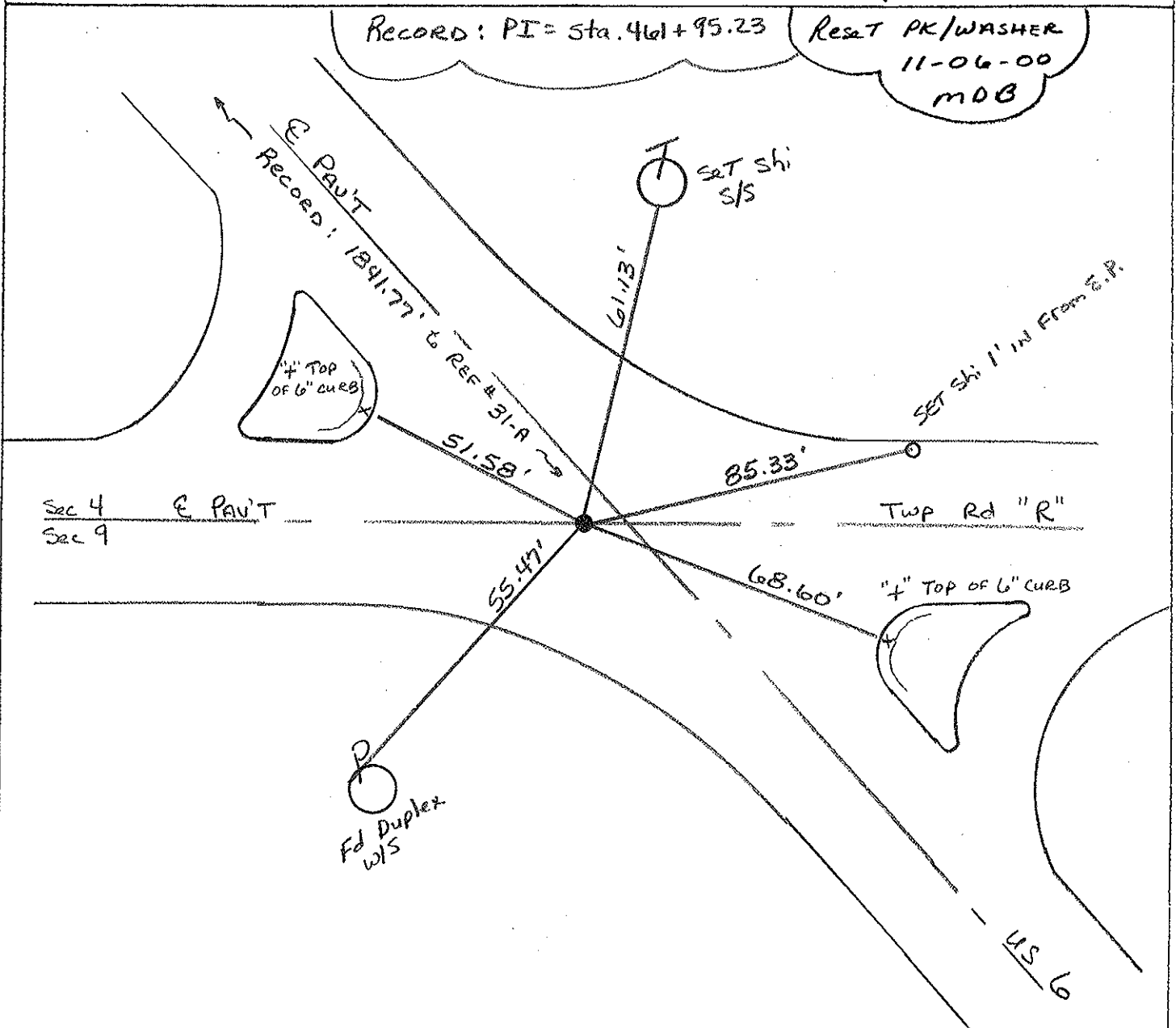
9.2' TO RT EDGE PAVEMENT

S.L.M. 460+78



Record: PI = Sta. 461+95.23

Reset PK/WASHER  
11-06-00  
MOB



Sec 4 E Pav't  
Sec 9

Twp Rd "R"

"4" Top of 6" CURB

US 6





