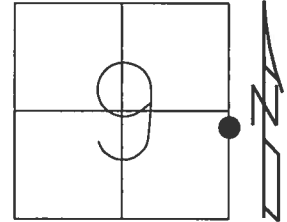


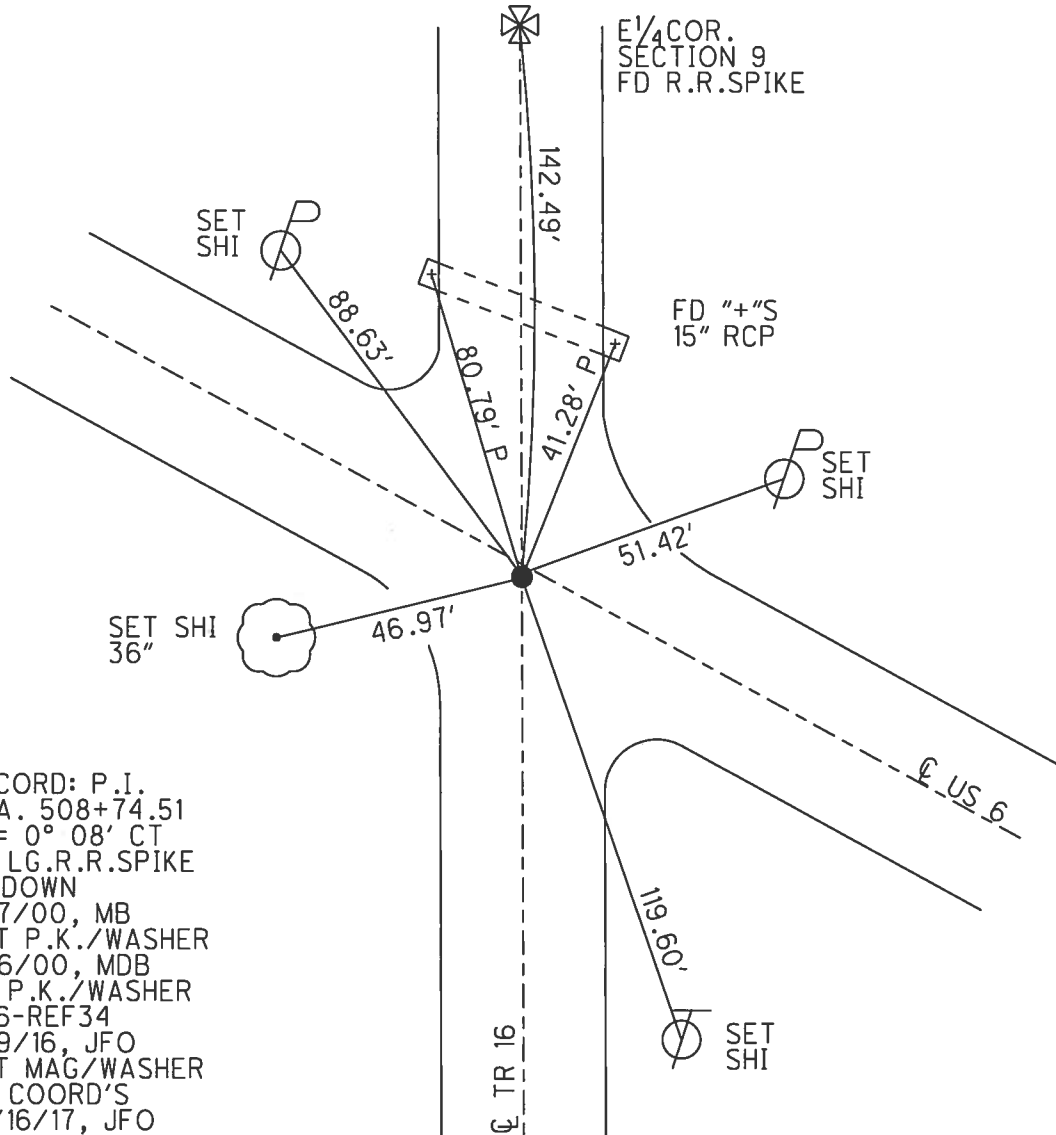
O.D.O.T. DISTRICT 2 SURVEY OFFICE (USE ONLY)

PERSONNEL _____ REFERENCE NO. 34 SHEET 33 OF 37
 NOTES O'DONNELL DATE 10/16/17 ROUTE US 6
 H.C. LEU WEATHER SUNNY COUNTY HENRY
 R.C. FARKAS TEMP. 52° TOWNSHIP NAPOLEON
 SECTION 9
 T 5 N R 6 E

TYPE MONUMENT MAG/WASHER
 ON SURFACE - ~~BELOW~~ ON
~~LEFT~~ - ℄ PAV'T - RIGHT 0.9'
10.7' TO RT EDGE PAVEMENT
 S.L.M. 508+78.90



Grid: Northing: 638107.569 Easting: 1510308.757



RECORD: P.I.
 STA. 508+74.51
 $\Delta = 0^\circ 08' CT$
 FD LG.R.R.SPIKE
 6" DOWN
 9/7/00, MB
 SET P.K./WASHER
 11/6/00, MDB
 FD P.K./WASHER
 SR6-REF34
 3/9/16, JFO
 SET MAG/WASHER
 BY COORD'S
 10/16/17, JFO

O.D.O.T. DISTRICT 2 SURVEY OFFICE

PERSONNEL

REFERENCE NO. 34

SHEET 30 OF 30

NOTES BARNHISEL

H.C. MOSEK

R.C. CANTERBURY

Huss F

DATE 9-7-00

WEATHER SUNNY

TEMP. +70°

ROUTE US 6

COUNTY HENRY

TOWNSHIP NAPOLEON

SECTION 9

T 5 N R 6 E

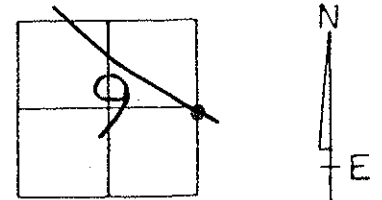
TYPE MONUMENT Lg RR SPIKE

ON SURFACE - BELOW 6"

LEFT - & PAV'T. - RIGHT 1.0'

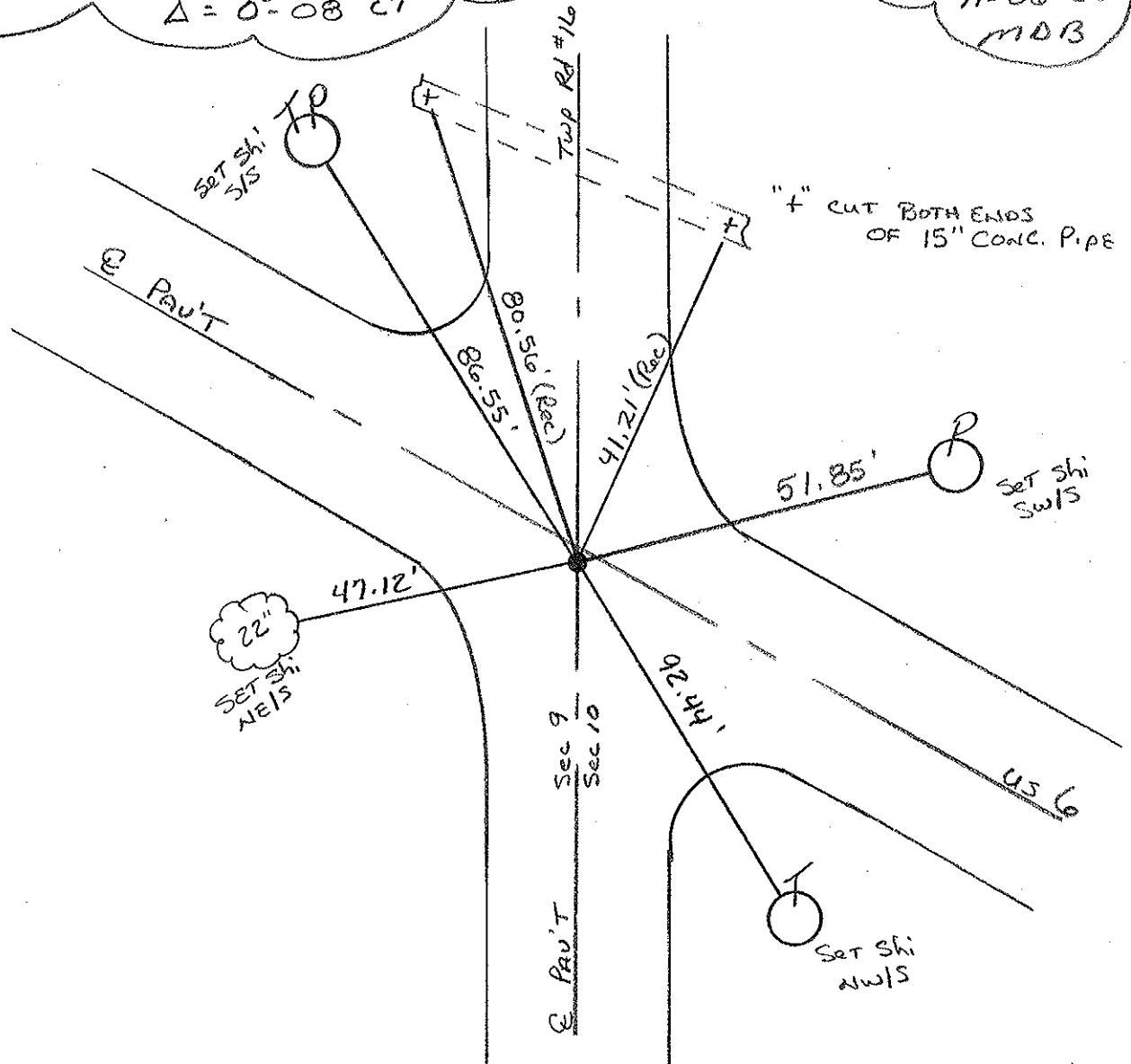
10.7' TO RT EDGE PAVEMENT

S.L.M. 507+51



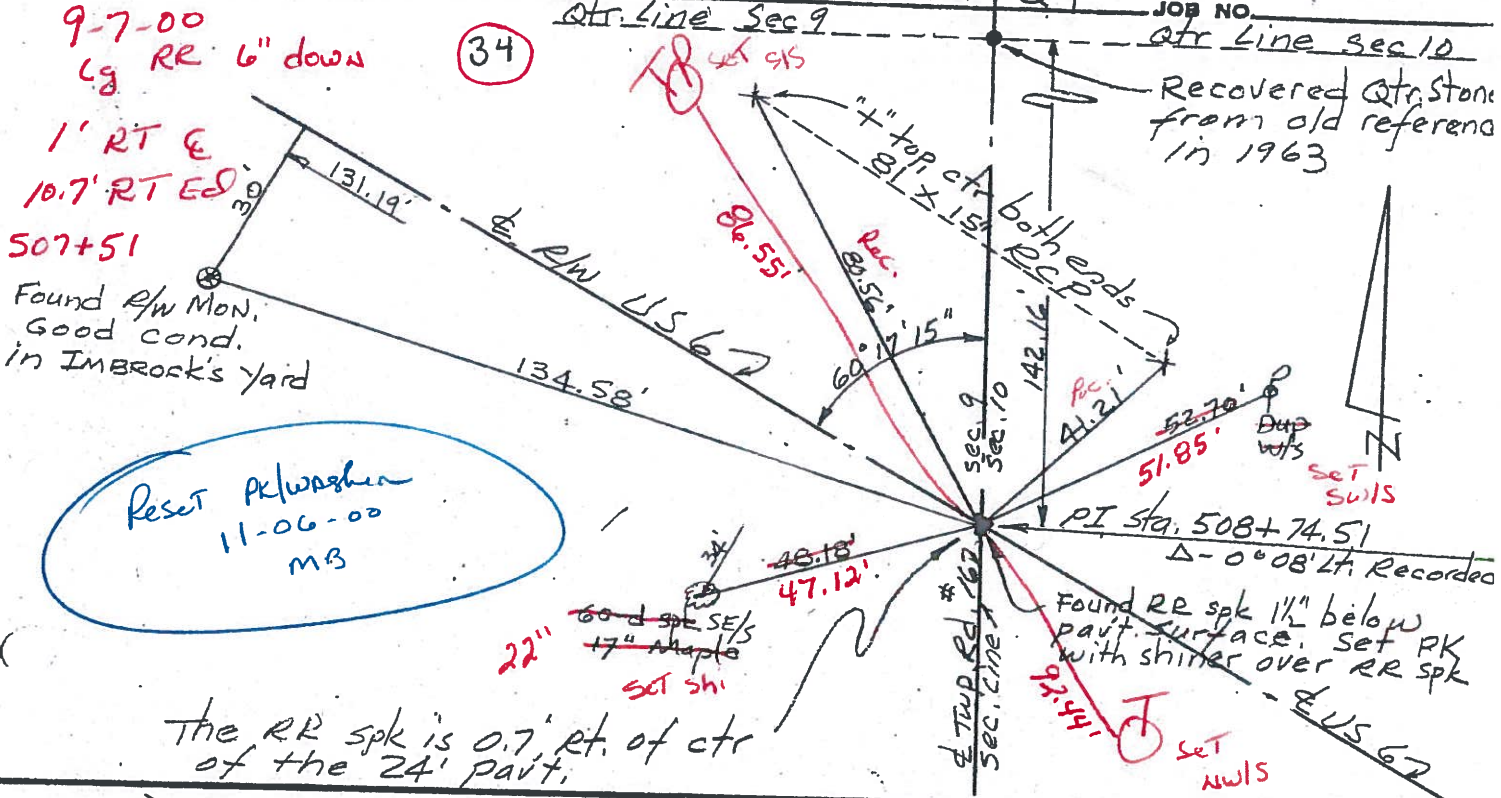
Record: PI = Sta. 508+74.51
 $\Delta = 0^{\circ}-08' \text{ CT}$

Reset PK/Washer
 11-06-00
 MDB

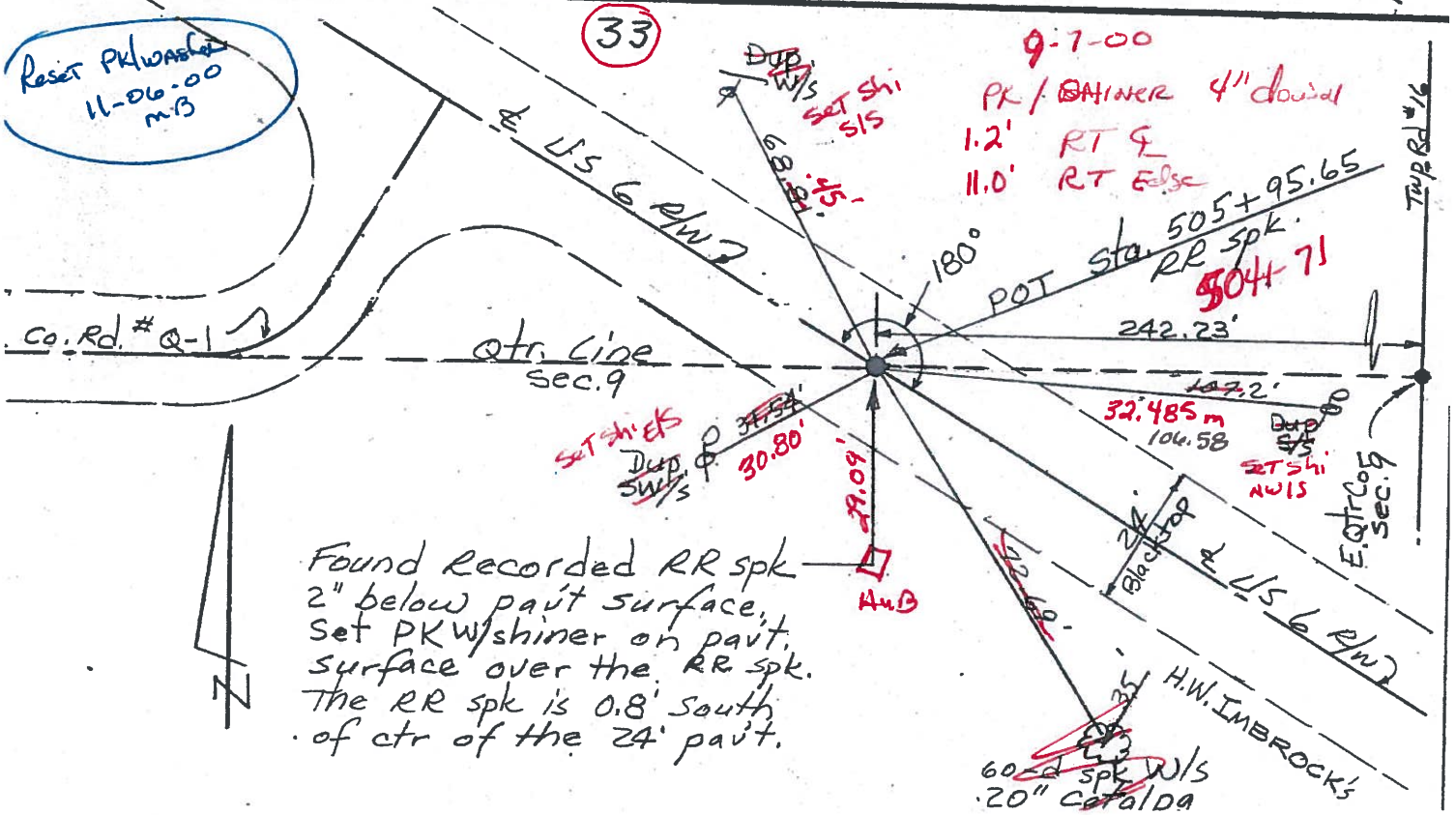


PERSONNEL Red Beach COUNTY HENRY DATE 4 May 77
 TITLE W. Knape S. R. US 6 WEATHER _____
 SEC. 9/10 Napoleon Twp TEMP. _____

DESCRIPTION CONTROLS at Roads #16 & Q-1 JOB NO. _____
ctr. line sec 9 ctr. line sec 10



The RR spike is 0.7' et. of ctr of the 24' pavt.



Found recorded RR spike 2" below pavt. surface. Set PK w/shiner on pavt. surface over the RR spike. The RR spike is 0.8' south of ctr of the 24' pavt.

PERSONNEL TITLE PERSONNEL TITLE

Red Beach
Armbruster
Knappe
Mahler

COUNTY Henry DATE Sept. '63

S. R. US #6 WEATHER

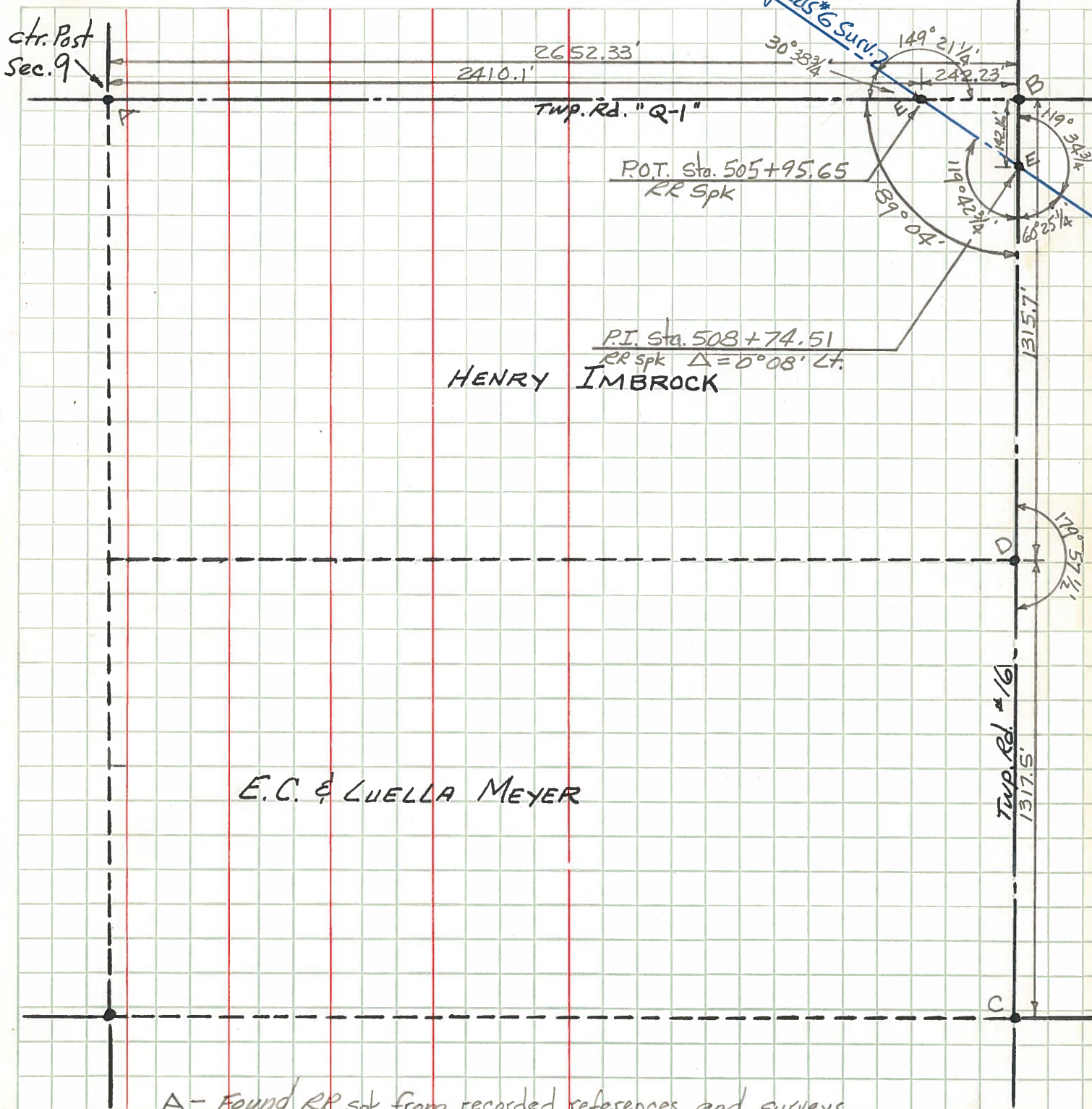
SEC. SE 1/4, Sec. 9 TEMP.

DESCRIPTION Napoleon Twp. T-5-N R-6-E JOB NO.

LEFT

CENTER LINE

RIGHT



- A - Found RR spk from recorded references and surveys
- B, D - Found stone from recorded references and old witnesses
- C - Found barrow spk over I. Pipe allegedly over stone. Stone recorded 30' deep.
- E - RR spk Est. on $\frac{1}{2}$ Survey.