

O.D.O.T. DISTRICT 2 SURVEY OFFICE (USE ONLY)

PERSONNEL _____ REFERENCE NO. 34 A SHEET 34 OF 37

NOTES O'DONNELL DATE 10/16/17 ROUTE US 6

H.C. LEU WEATHER SUNNY COUNTY HENRY

R.C. FARKAS TEMP. 52° TOWNSHIP NAPOLEON

SECTION 10

T 5 N R 6 E

TYPE MONUMENT MAG/WASHER

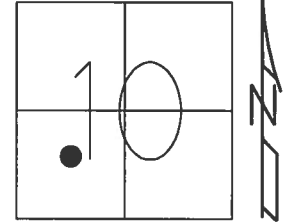
ON SURFACE - ~~BELOW~~ ON _____

~~LEFT~~ - CL PAV'T - RIGHT 2.6'

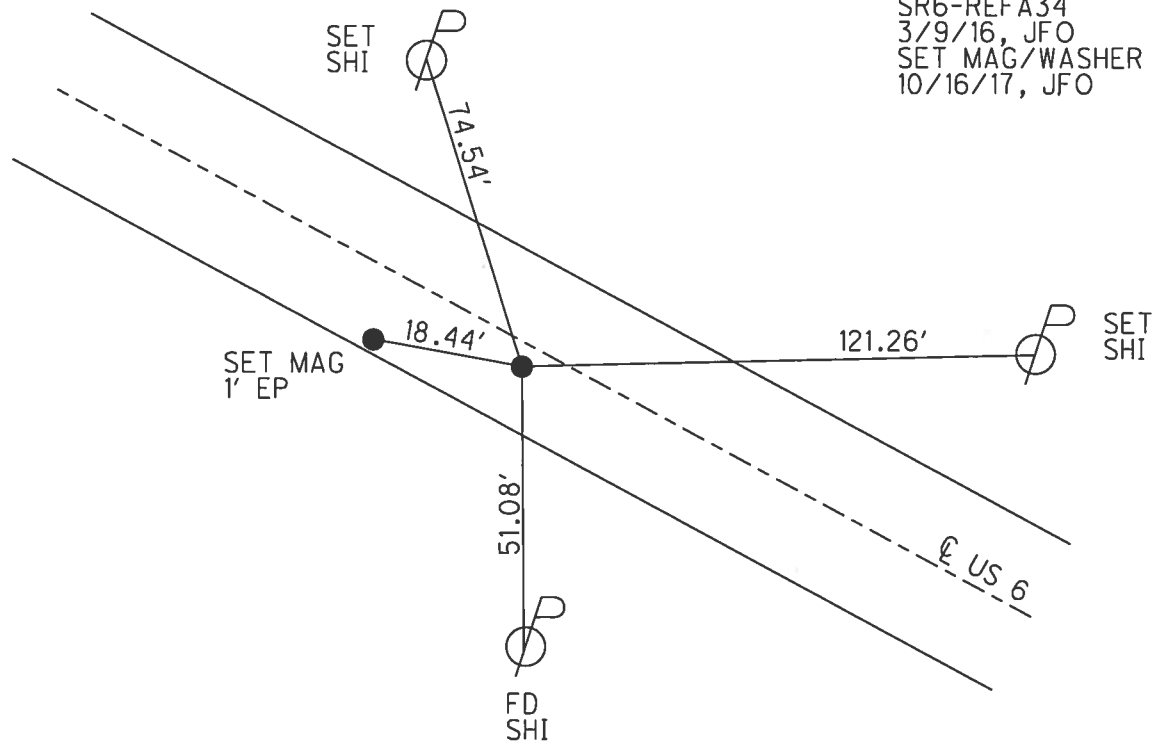
9.6' TO RT EDGE PAVEMENT

S.L.M. 524+14.91

Grid: Northing: 637320.275 Easting: 1511627.598



RECORD: P.O.T.
 STA. 524+10.63
 FD P.K./WASHER
 5" DOWN
 9/8/00, MB
 SET P.K./WASHER
 11/6/00, MDB
 FD P.K./WASHER
 SR6-REFA34
 3/9/16, JFO
 SET MAG/WASHER
 10/16/17, JFO



O.D.O.T. DISTRICT 2 SURVEY OFFICE

PERSONNEL

REFERENCE NO. 34-A

SHEET 31 OF 35

NOTES BARNHISEL

H.C. MOSEK

R.C. CANTERBURY

HUSS F

DATE 9-8-00

WEATHER SUNNY

TEMP. +75°

ROUTE US 6

COUNTY HENRY

TOWNSHIP NAPOLEON

SECTION 10

T 5 N R 6 E

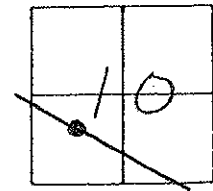
TYPE MONUMENT PK / SHINER

ON SURFACE - BELOW 5"

FEET - & PAV'T. - RIGHT 2.2'

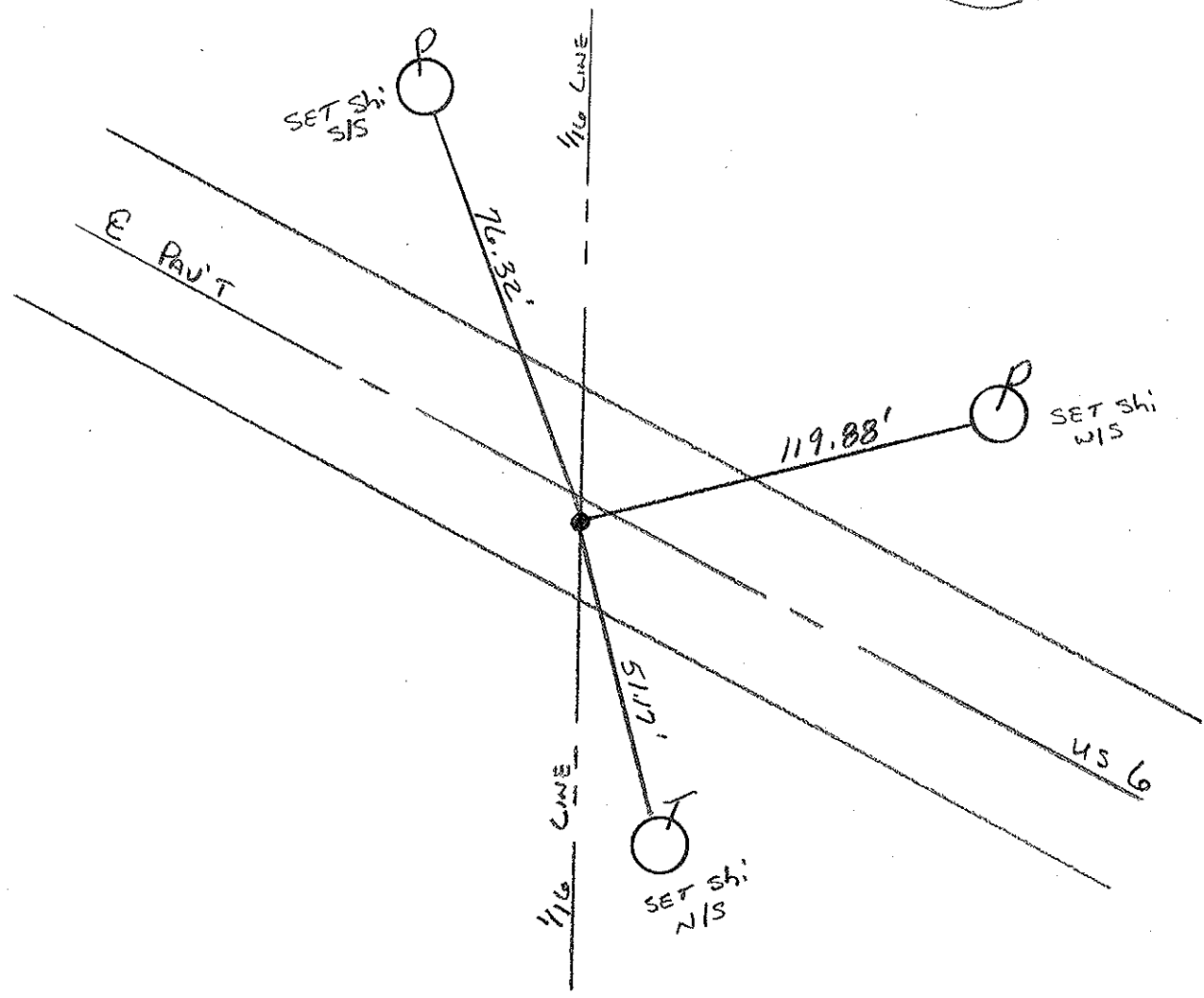
9.6' TO RT EDGE PAVEMENT

S.L.M. 522+87



Record: POT = sta. 524+10.63

Reset PK/WASHER
11-06-00
MDB



PERSONNEL	TITLE	PERSONNEL	TITLE	COUNTY	DATE	WEATHER
Red Beach				HENRY	5 MAY 19	
W. Knape				US 6		
DESCRIPTION				SEC. 10, Napoleon Twp.	TEMP.	
CONTROL POINTS				JOB NO.		

