

O.D.O.T. DISTRICT 2 SURVEY OFFICE (USE ONLY)

PERSONNEL _____

REFERENCE NO. 39

SHEET 44 OF 47

NOTES BURNSIDE

DATE 4/27/79

ROUTE US 6

H.C. SMITH

WEATHER CLOUDY

COUNTY HENRY

R.C. BOWERS

TEMP. 50°

TOWNSHIP LIBERTY

SECTION 6

DWG BY NIESE

PID _____

T 6 N R 7 E

TYPE MONUMENT MONBOX W/ 1" IPIN

ON SURFACE - ~~BELOW~~ ON

OFFSET ☉ PAVEMENT ON LT : RT

- TO - EDGE PAVEMENT

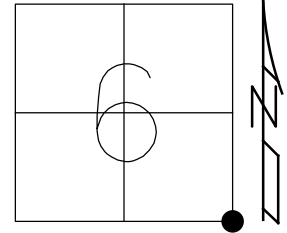
STATION: 759+07

HORZ. DATUM: _____

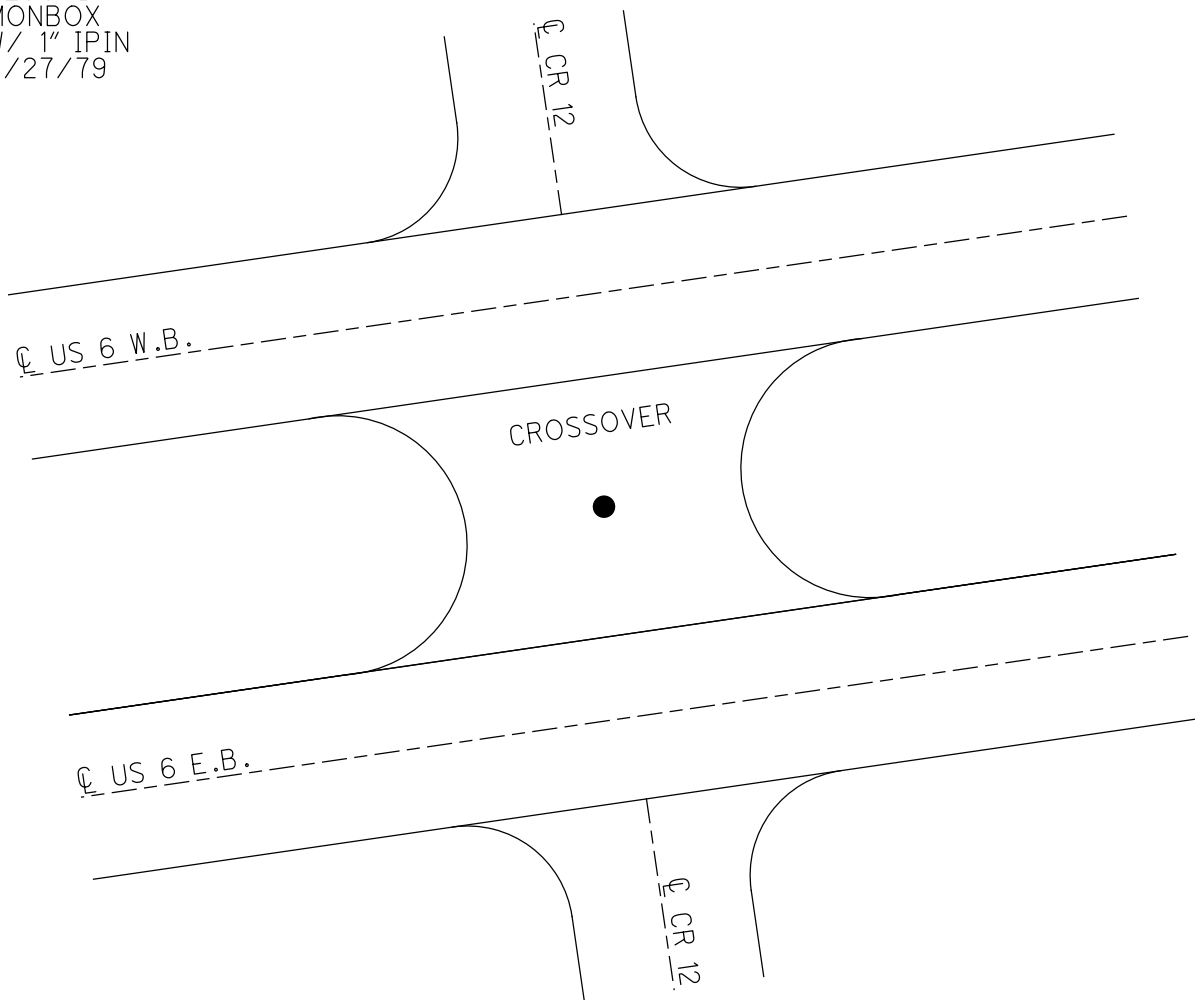
GEOID: _____

GRID: NORTHING: _____

EASTING: _____



RECORD:
MONBOX
W/ 1" IPIN
4/27/79



County HENRY

Date 4-27-79

Township LIBERTY

Weather CLOUDY

Section 5 & 6

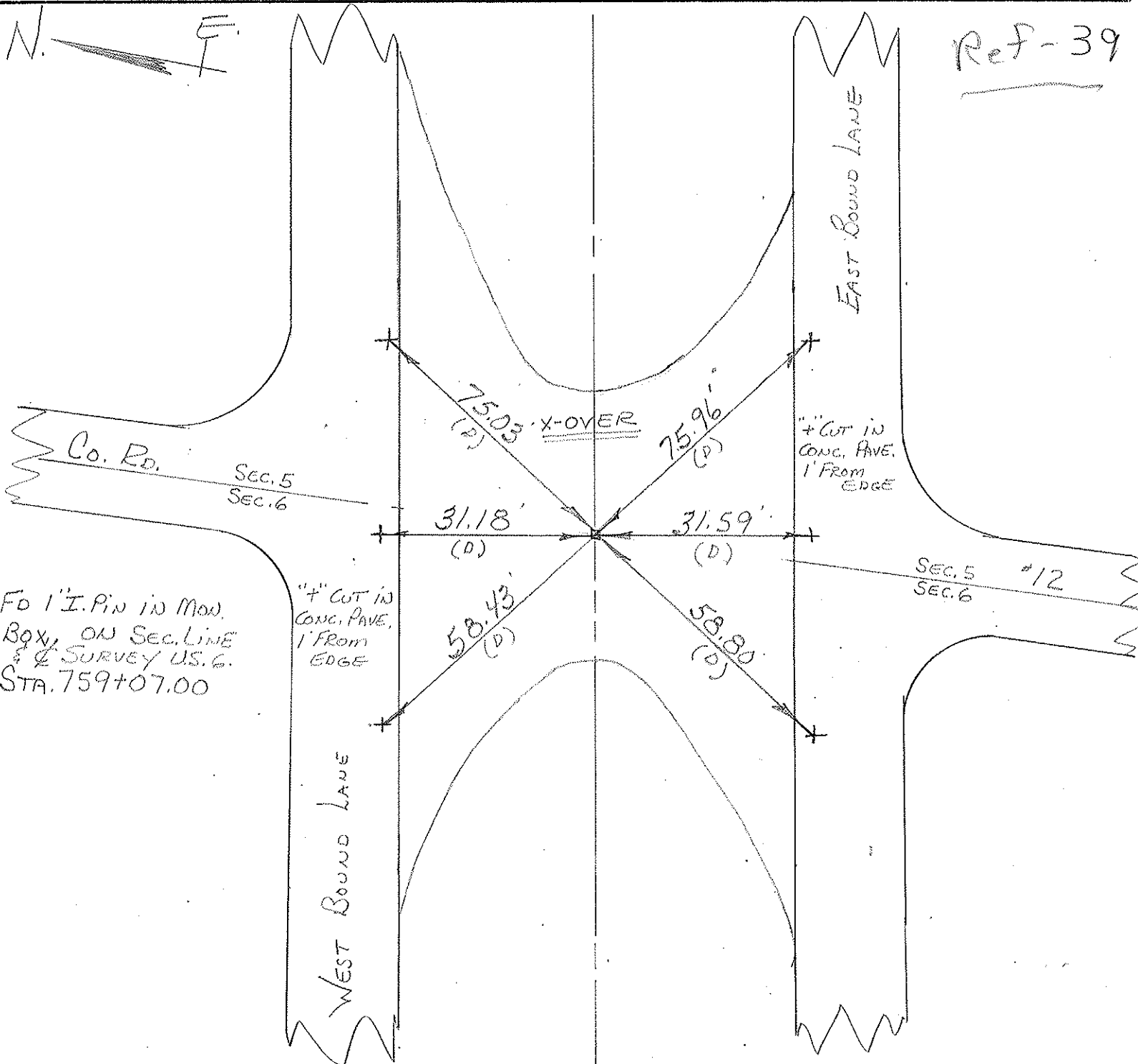
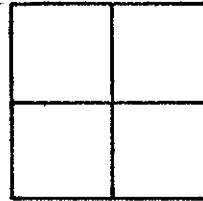
Temp. +50°

T5N, R2E

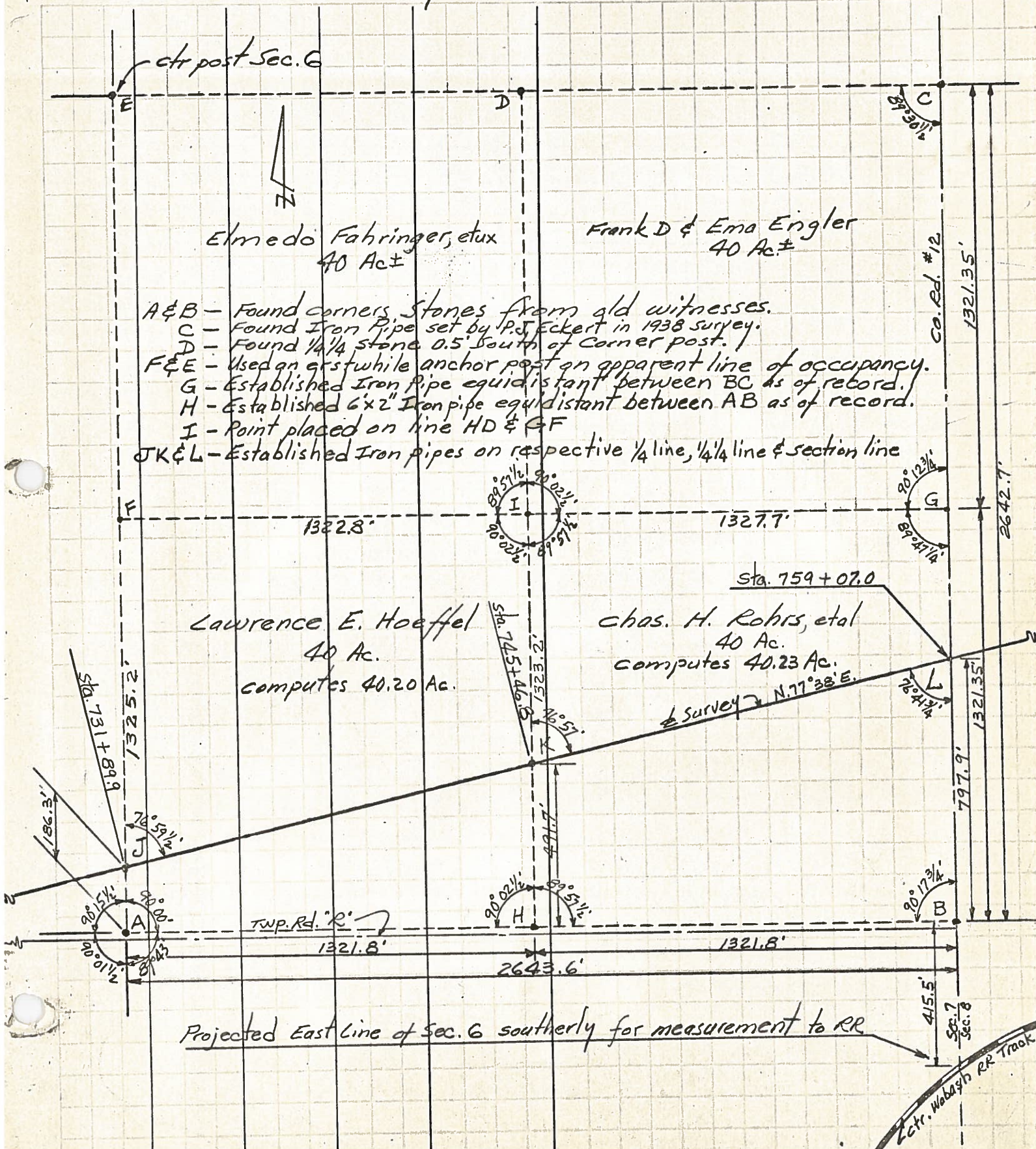
Personnel BURNSIDE

SMITH

BOWERS



PERSONNEL	TITLE	PERSONNEL	TITLE	COUNTY	DATE
Beach				Henry	Apr. 1961
				S. R 15 ^{#6} & US ^{#24} Bypass	WEATHER
				SEC. SE 1/4 Sec. 6	TEMP.
DESCRIPTION	Liberty Twp. T-5-N R-7-E			JOB NO.	
	LEFT	CENTER LINE	RIGHT		



- A & B - Found corner stones from old witnesses.
- C - Found Iron Pipe set by P. J. Eckert in 1938 survey.
- D - Found 1 1/4 stone 0.5' South of Corner post.
- F & E - Used an grstwhile anchor post on apparent line of occupancy.
- G - Established Iron Pipe equidistant between BC as of record.
- H - Established 6'x2" Iron pipe equidistant between AB as of record.
- I - Point placed on line HD & GF
- JK & L - Established Iron pipes on respective 1/4 line, 1/4 line & section line

Lawrence E. Hoeffel
40 Ac.
computes 40.20 Ac.

Chas. H. Rohrs, et al
40 Ac.
computes 40.23 Ac.

Projected East Line of Sec. 6 southerly for measurement to RR

Ctr. Wabash RR Track