

O.D.O.T. DISTRICT 2 SURVEY OFFICE (USE ONLY)

PERSONNEL

REFERENCE NO. 41

SHEET 46 OF 47

NOTES BURNSIDE DATE 4/26/79

ROUTE US 6

H.C. SMITH WEATHER CLOUDY

COUNTY HENRY

R.C. BOWERS TEMP. 60°

TOWNSHIP LIBERTY

DWG BY NIESE PID _____

SECTION 5

T 6 N R 7 E

TYPE MONUMENT CMON W/ 1/4" IPIN

ON SURFACE - ~~BELOW~~ ON

OFFSET Q PAVEMENT ON LT : RT

- TO - EDGE PAVEMENT

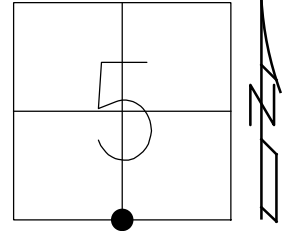
STATION: 786+10.80

HORIZ.DATUM: _____

GEOID: _____

GRID: NORTHING: _____

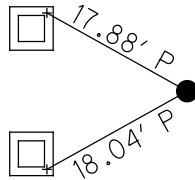
EASTING: _____



RECORD: P.O.C.
STA 786+10.80
FD CMON
W/ 1/4" IPIN
4/26/79

Q US 6 W.B.

"+" IN CORNER
CONC CB



Q US 6 E.B.

County HENRY

Date 4-27-79

Township LIBERTY

Weather CLOUDY

Section 5

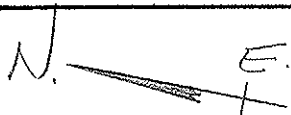
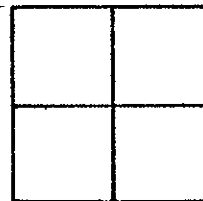
Temp. +50°

T5N, R7E

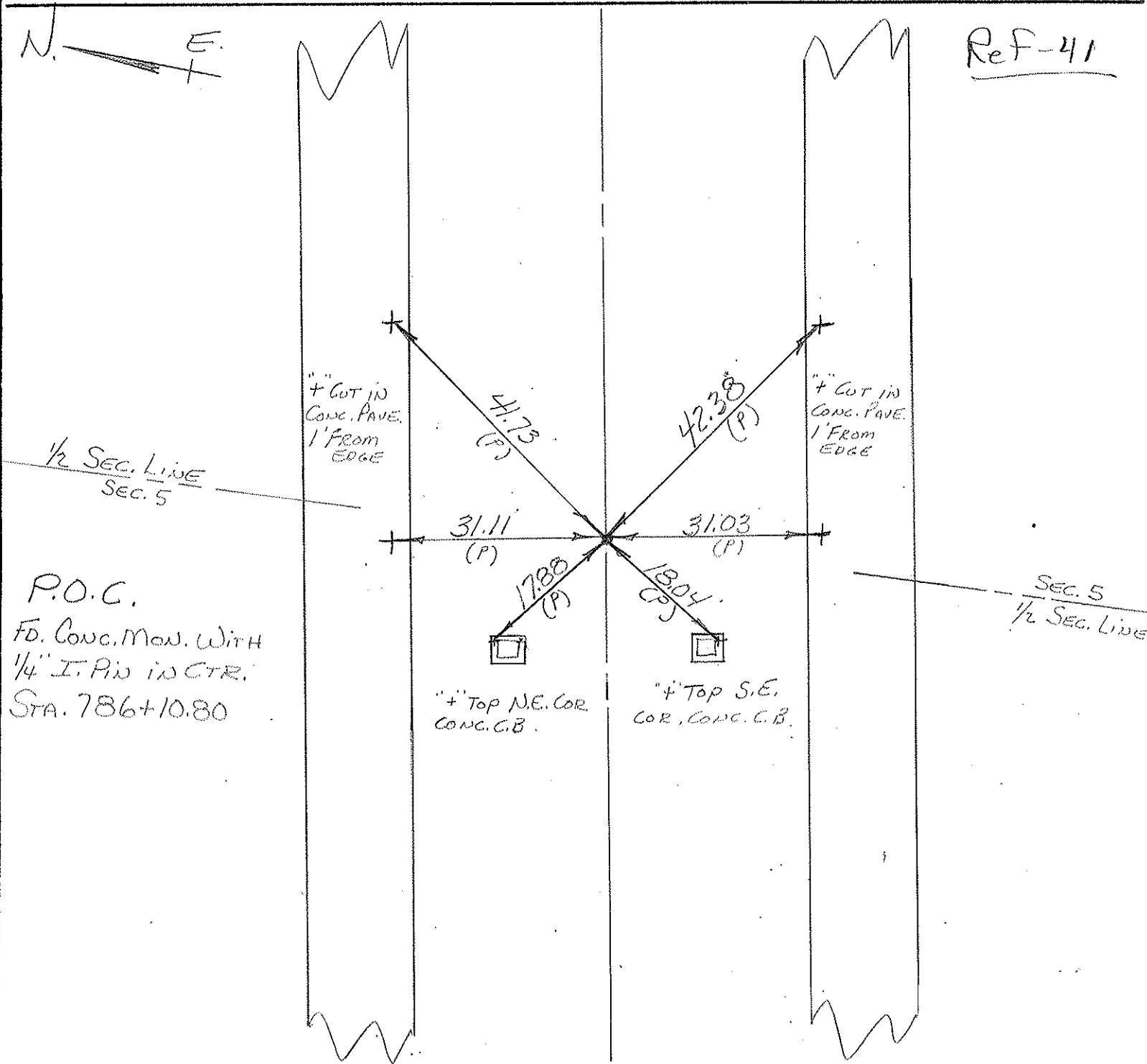
Personnel BURNSIDE

SMITH

BOWERS



Ref-41

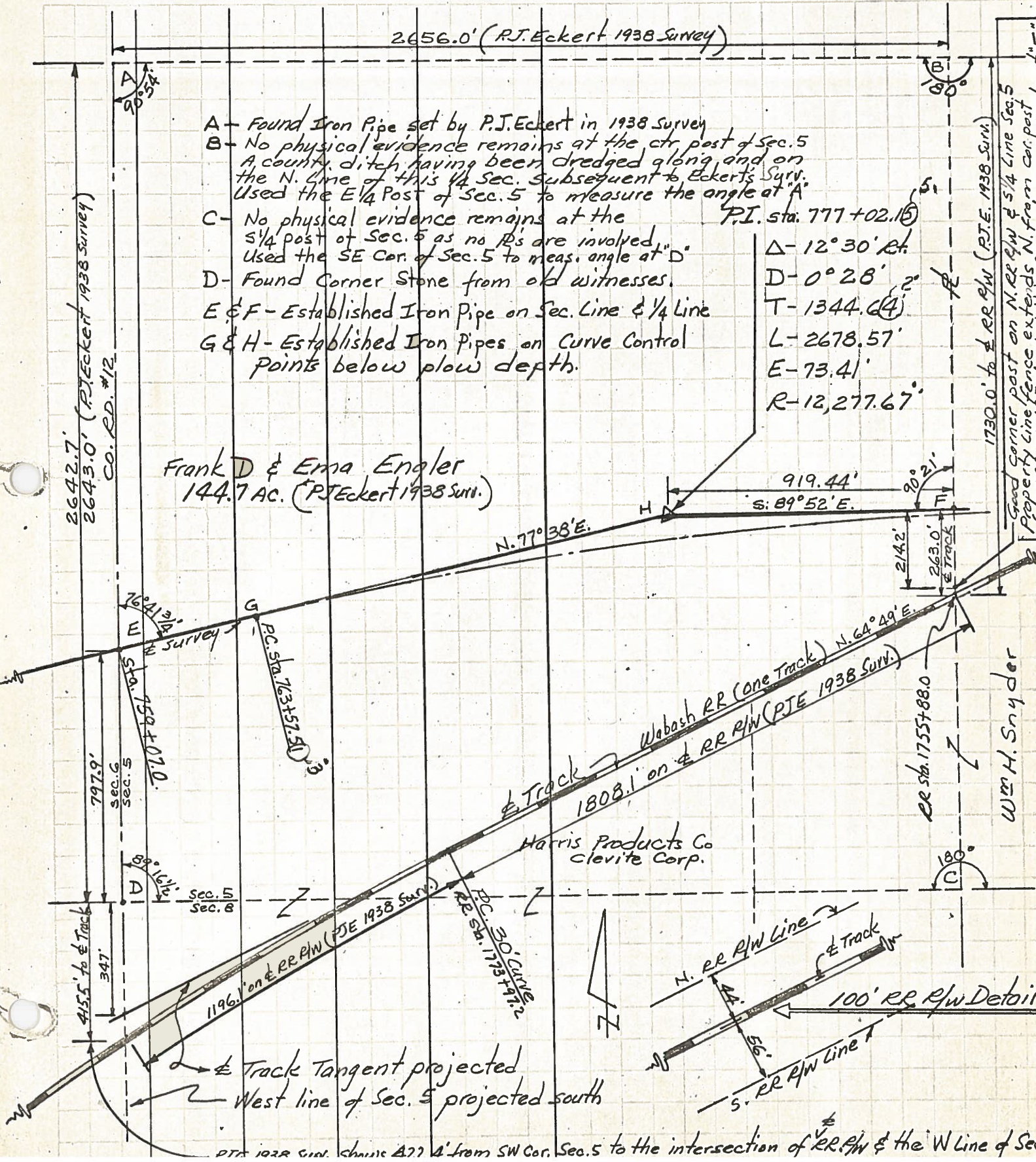


1/2 SEC. LINE
SEC. 5

P.O.C.
FD. CONC. MON. WITH
1/4" I. PIN IN CTR.
STA. 786+10.80

SEC. 5
1/2 SEC. LINE

PERSONNEL	TITLE	PERSONNEL	TITLE	COUNTY	DATE
Beach				Henry	Apr. 1961
				S. R. US #6 & US #24 Bypass	WEATHER
				SEC. SW 1/4, Sec. 5	TEMP.
DESCRIPTION	LEFT	CENTER LINE	RIGHT	LIBERTY TWP. T-5-N R-7-E	JOB NO.



- A - Found Iron Pipe set by P.J. Eckert in 1938 Survey
- B - No physical evidence remains at the ctr post of Sec. 5
A county ditch having been dredged along and on the N. Line of this 1/4 Sec. subsequent to Eckert's Surv. Used the E 1/4 Post of Sec. 5 to measure the angle at "A"
- C - No physical evidence remains at the S 1/4 post of Sec. 5 as no R's are involved. Used the SE Cor. of Sec. 5 to meas. angle at "D"
- D - Found Corner Stone from old witnesses.
- E & F - Established Iron Pipe on Sec. Line & 1/4 Line
- G & H - Established Iron Pipes on Curve Control Points below plow depth.

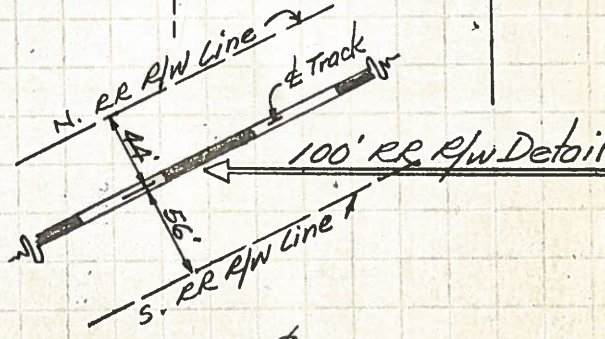
P.I. sta. 777+02.15
 Δ - 12° 30' R.
 D - 0° 28' 2"
 T - 1344.64
 L - 2678.57
 E - 73.41
 R - 12,277.67

Frank D & Erma Engler
 144.7 AC. (P.J. Eckert 1938 Surv.)

1730.0' to RR R/W (P.J.E. 1938 Surv.)
 Good corner post on N. RR R/W & 1/4 Line Sec. 5
 Property line fence extends N. from cor. post 1'

Wm H. Snyder

Harris Products Co
 Clevite Corp.



PTA 1022 Surv. Chain 477 4' from SW Cor. Sec. 5 to the intersection of RR R/W & the W Line of Sec.

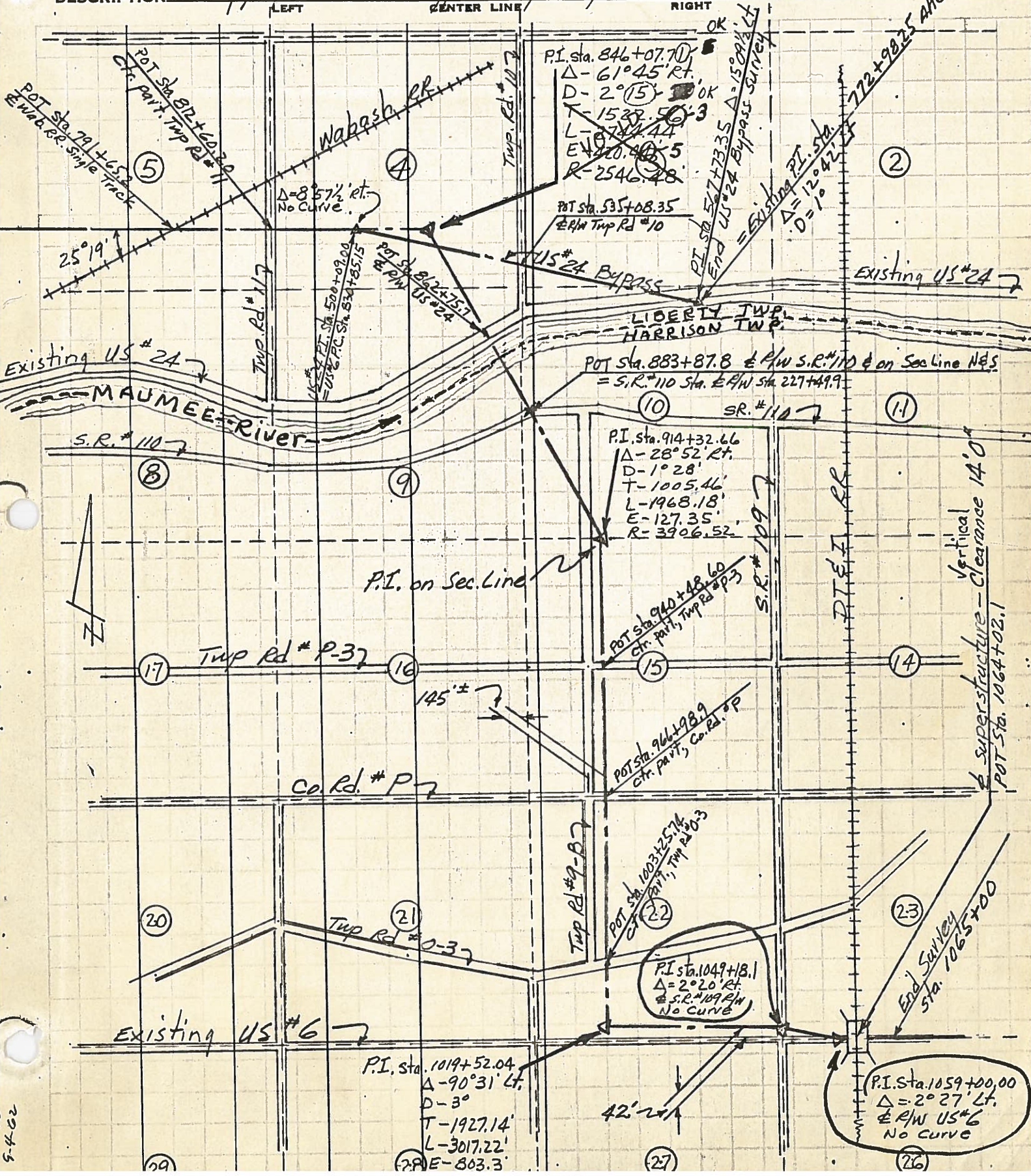
PERSONNEL TITLE PERSONNEL TITLE

COUNTY Henry DATE Jan-Feb 1961

Beach
Ambrister
Knappe
Gunter
Mohler

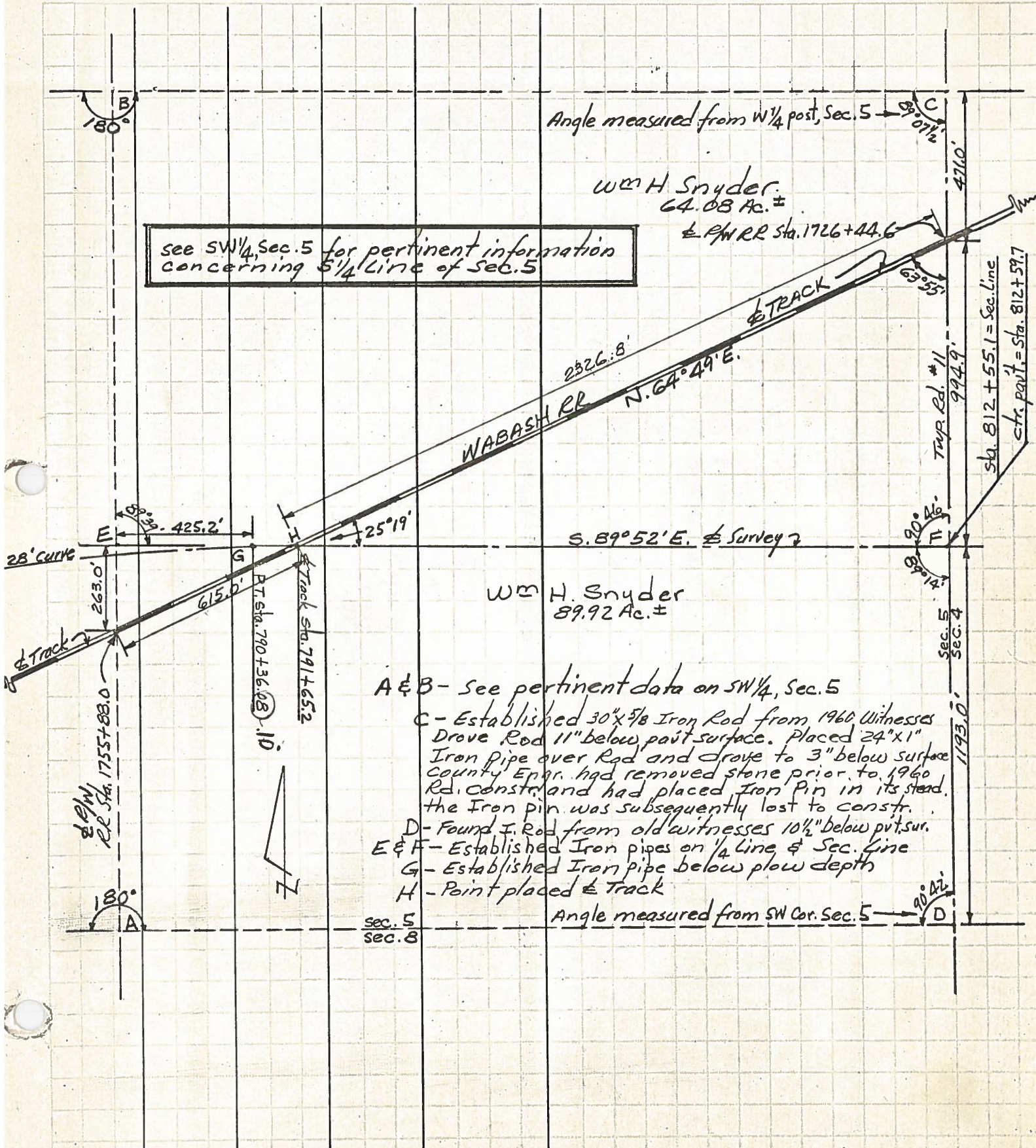
S. R. US#6 & #24 Bypass WEATHER
SEC. Liberty & Harrison Tups. TEMP.

DESCRIPTION Survey proposed US#6 & #24 Bypass superimposed on section lines



5-4-62

PERSONNEL	TITLE	PERSONNEL	TITLE	COUNTY	DATE
Beach				Henry	Apr. 1961
				S. R. US#6 & US#24 Bypass	WEATHER
				SEC. SE 1/4, Sec. 5	TEMP.
DESCRIPTION	Liberty Twp. T-5-N R-7-E			JOB NO.	
	LEFT	CENTER LINE	RIGHT		



see SW 1/4, Sec. 5 for pertinent information concerning S 1/4 line of Sec. 5

Wm H. Snyder
64.08 Ac. \pm
E P/W RR Sta. 1726+44.6

Wm H. Snyder
89.92 Ac. \pm

- A & B - See pertinent data on SW 1/4, Sec. 5
- C - Established $30 \times 5/8$ Iron Rod from 1960 Witnesses Drove Rod 11" below pvt surface. Placed 24×1 Iron pipe over Rod and drove to 3" below surface County Engr. had removed stone prior to 1960 Rd. constr. and had placed Iron pin in its stead. the Iron pin was subsequently lost to constr.
- D - Found I. Rod from old witnesses $10 1/2$ " below pvt. sur.
- E & F - Established Iron pipes on 1/4 Line & Sec. line
- G - Established Iron pipe below plow depth
- H - Point placed $\&$ Track

Angle measured from SW Cor. Sec. 5

PERSONNEL TITLE PERSONNEL TITLE

Beach

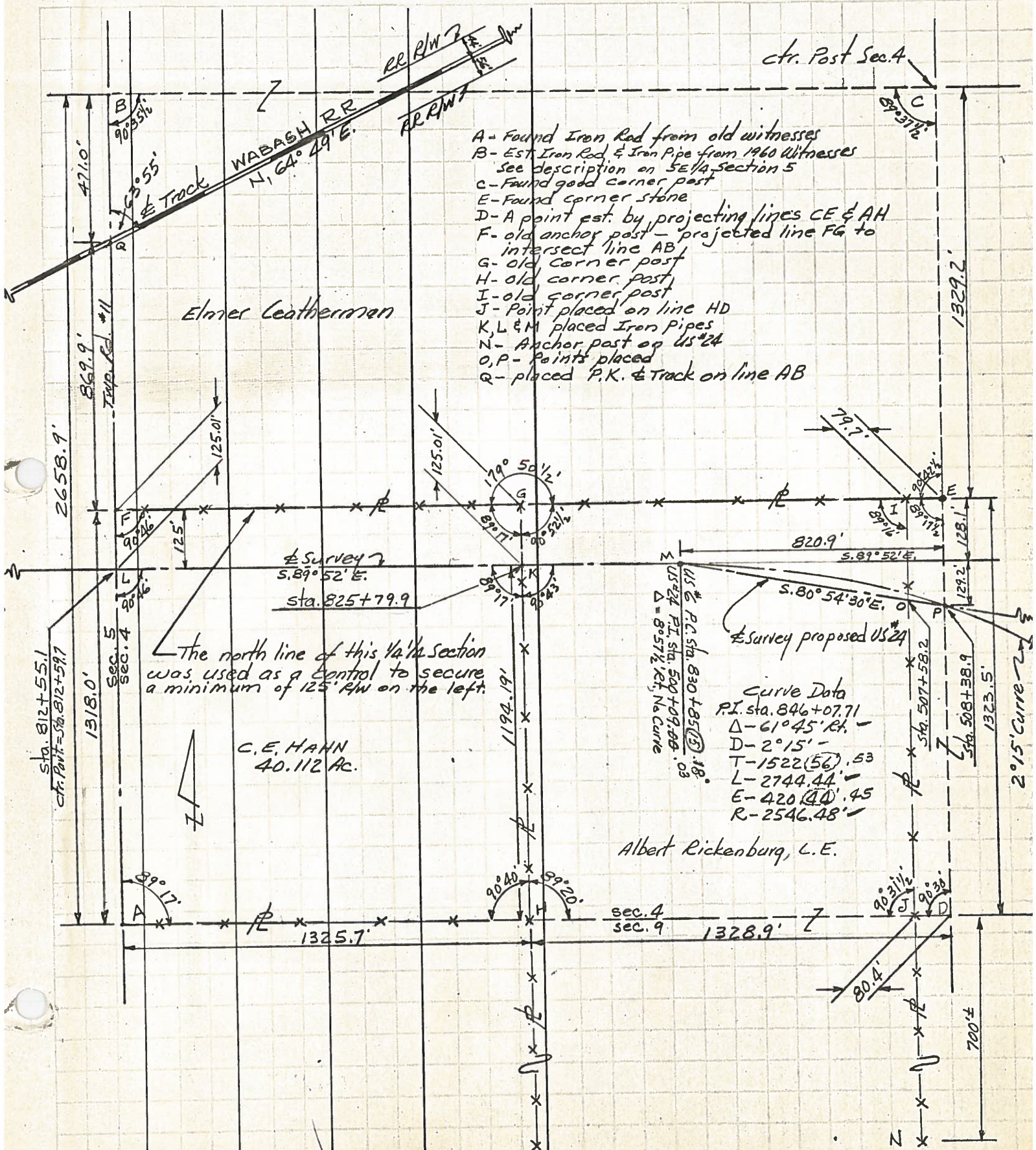
COUNTY Henry DATE Apr. 1961

S. R. US #6 & US #24 Bypass WEATHER

SEC. SW 1/4 Sec. 4 TEMP.

DESCRIPTION Liberty Twp. T-5-N R-7-E JOB NO.

LEFT CENTER LINE RIGHT



- A - Found Iron Rod from old witnesses
- B - Est. Iron Rod & Iron Pipe from 1960 witnesses
See description on SE 1/4 Section 5
- C - Found good corner post
- E - Found corner stone
- D - A point est. by projecting lines CE & AH
- F - old anchor post - projected line FG to intersect line AB
- G - old corner post
- H - old corner post
- I - old corner post
- J - Point placed on line HD
- K, L & M placed Iron Pipes
- N - Anchor post on US #24
- O, P - Points placed
- R - placed P.K. & Track on line AB

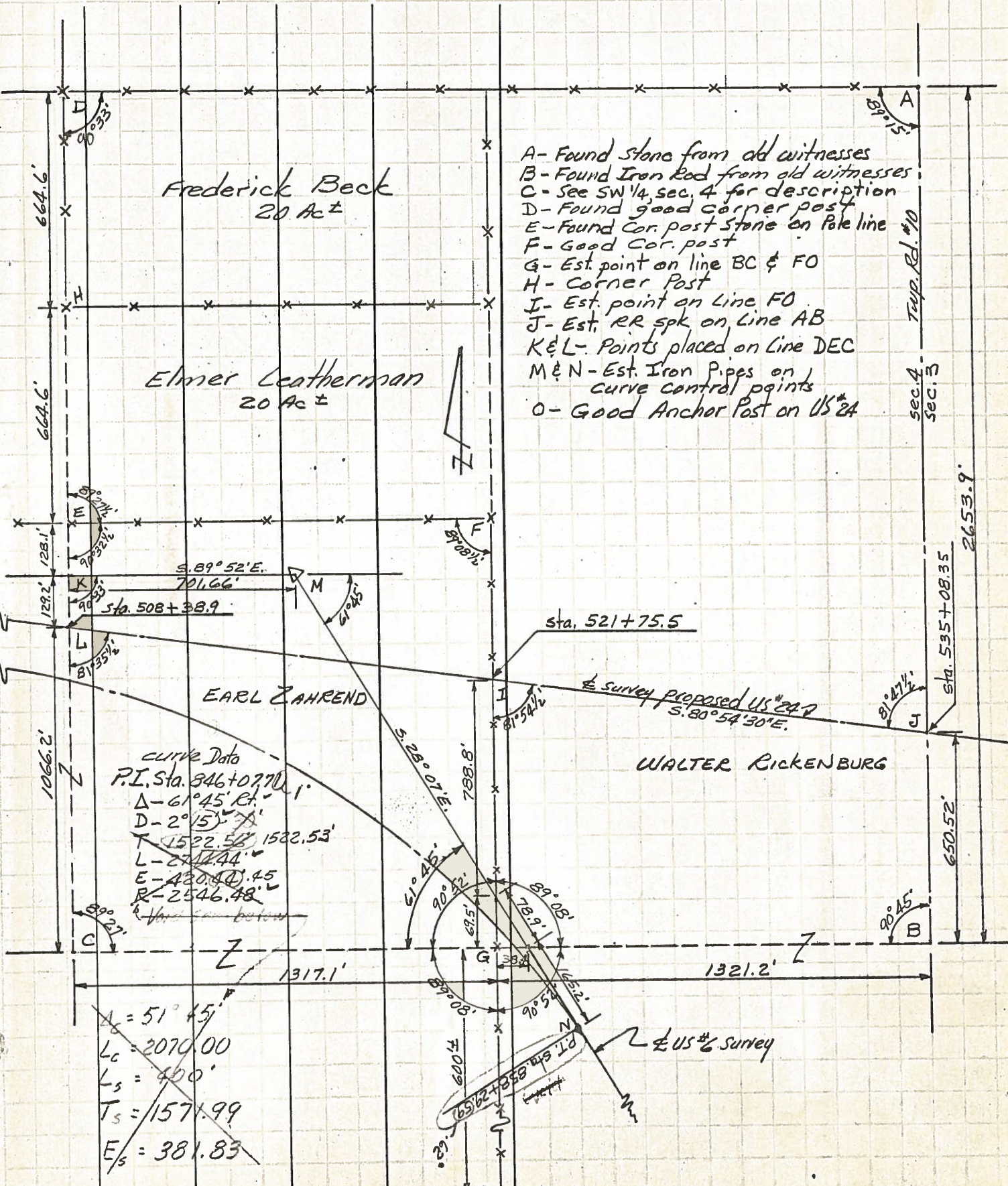
The north line of this 1/4 section was used as a control to secure a minimum of 125' RW on the left.

Curve Data
 P.I. sta. 846+07.71
 $\Delta = 61^{\circ}45' R.H.$
 $D = 2^{\circ}15'$
 $T = 1522(56).53$
 $L = 2744.44$
 $E = 420(40).45$
 $R = 2546.48'$

C. E. HAHN
 40.112 AC.

Albert Rickenburg, L.E.

PERSONNEL	TITLE	PERSONNEL	TITLE	COUNTY	DATE
Beach				Henry	Apr. 1961
				S. R. US#6 & US#24 Bypass	WEATHER
				SEC. SE 1/4 Sec. 4	TEMP.
DESCRIPTION			Liberty, Twp. T-5-N R-7-E		JOB NO.
LEFT		CENTER LINE		RIGHT	



- A - Found Stone from old witnesses
- B - Found Iron Rod from old witnesses
- C - See SW 1/4, sec. 4 for description
- D - Found good corner post
- E - Found Cor. post Stone on Pole line
- F - Good Cor. post
- G - Est. point on line BC & FO
- H - Corner Post
- I - Est. point on Line FO
- J - Est. RR spk on Line AB
- K & L - Points placed on Line DEC
- M & N - Est. Iron Pipes on curve control points
- O - Good Anchor Post on US#24

curve Data
 P.I. Sta. 846+0.770
 $\Delta = 61^{\circ}45'$
 $D = 2^{\circ}15'$
 $T = 1522.52$
 $L = 2744.44$
 $E = 430.40$
 $R = 2546.48$

$A = 51^{\circ}45'$
 $L_c = 2070.00$
 $L_s = 400'$
 $T_s = 1571.99$
 $E_s = 381.83$

Pavlo
 9-4-62