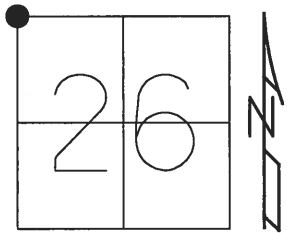


O.D.O.T. DISTRICT 2 SURVEY OFFICE (USE ONLY)

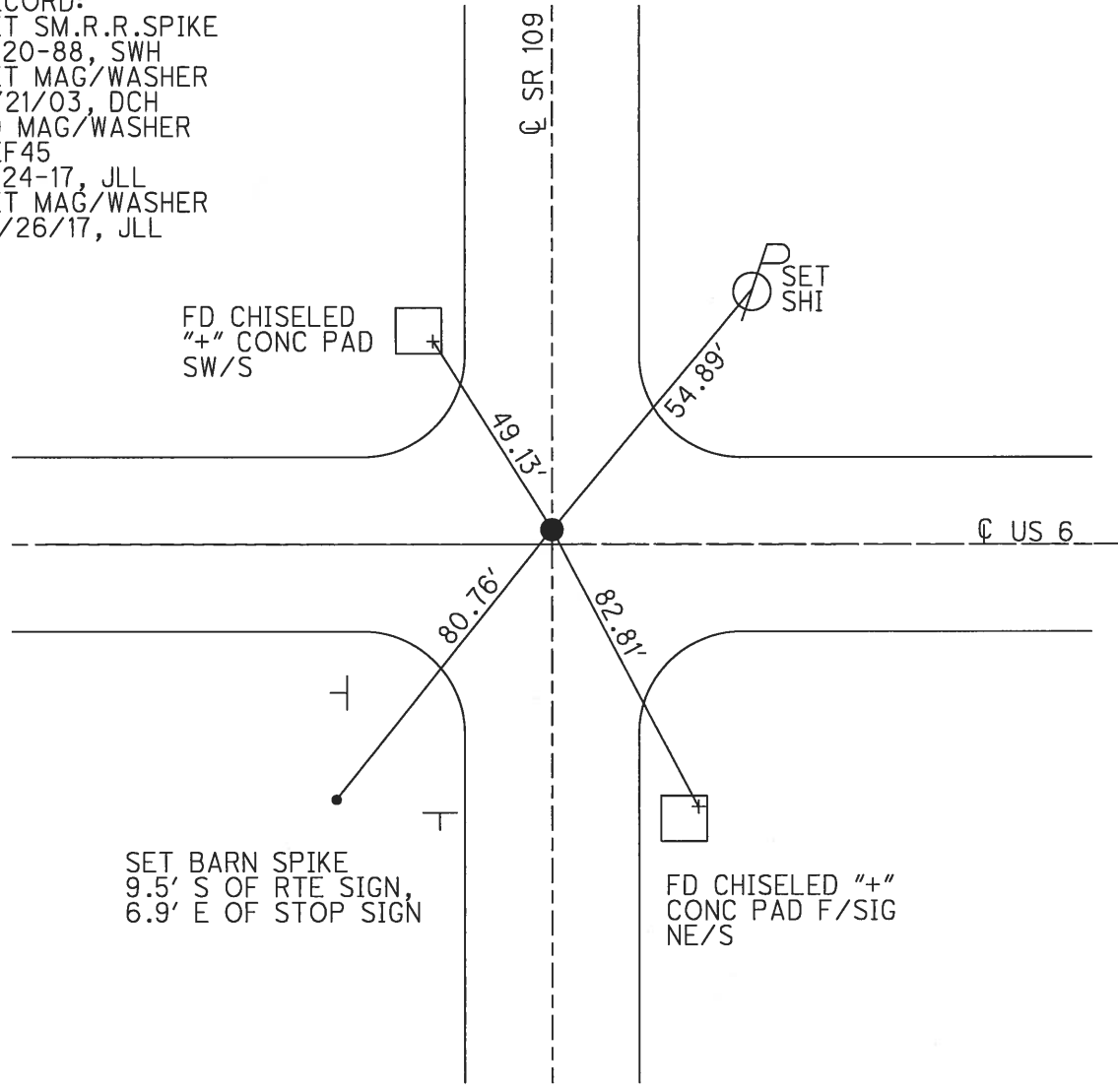
PERSONNEL _____ REFERENCE NO. 45 SHEET 6 OF 24
 NOTES RHOADES DATE 4/24/17 ROUTE US 6
 H.C. LEU WEATHER SUNNY COUNTY HENRY
 R.C. HELDMAN TEMP. 55° TOWNSHIP HARRISON
 SECTION 26
 T 5 N R 7 E

TYPE MONUMENT SM.R.R.SPIKE
~~ON SURFACE~~ - BELOW 4"
 LEFT - ℄ PAV'T - ~~RIGHT~~ 0.7'
 - TO - EDGE PAVEMENT
 S.L.M. 1049+75.72



GRID: NORTHING: 624575.8611 EASTING: 1546311.491

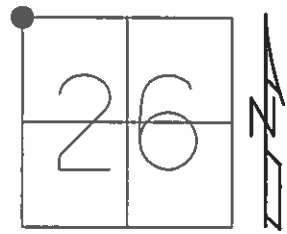
RECORD:
 SET SM.R.R.SPIKE
 6-20-88, SWH
 SET MAG/WASHER
 4/21/03, DCH
 FD MAG/WASHER
 REF45
 4-24-17, JLL
 SET MAG/WASHER
 10/26/17, JLL



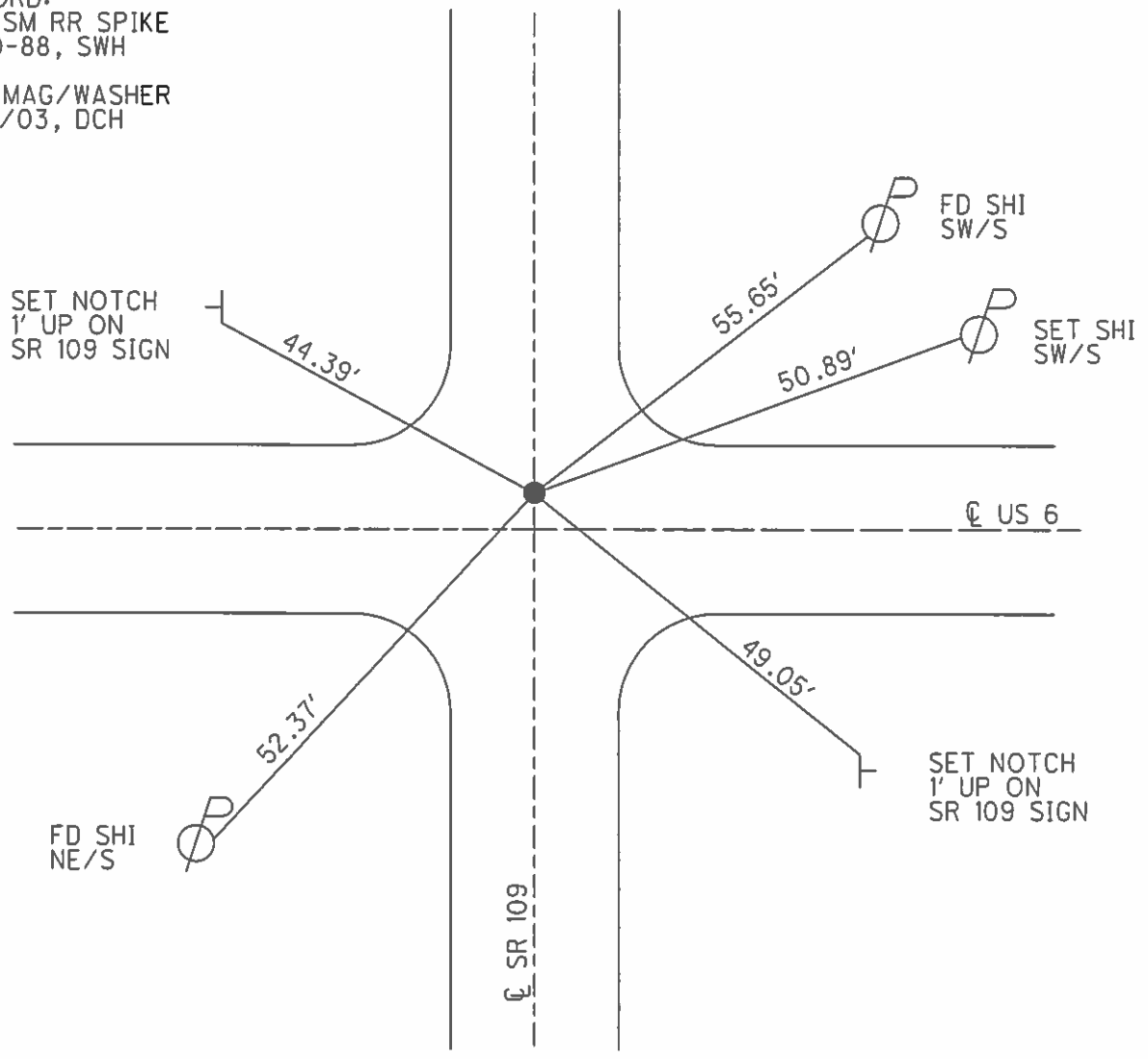
O.D.O.T. DISTRICT 2 SURVEY OFFICE (USE ONLY)

PERSONNEL _____ REFERENCE NO. 45 SHEET 1 OF 18
 NOTES HOMAN DATE 7/18/02 ROUTE US 6
 H.C. ROUSOS WEATHER SUNNY COUNTY HENRY
 R.C. BEAUMONT TEMP. 90° TOWNSHIP HARRISON
CHLEBECK SECTION 26
T 5 N R 7 E

TYPE MONUMENT SM.R.R.SPIKE
 ON SURFACE - ~~BELOW~~ ON _____
~~LEFT~~ - ℄ PAV'T - RIGHT 4.4'
 - TO - EDGE PAVEMENT
 S.L.M. 1051+77.6
 GRID: NORTHING: _____ EASTING: _____



RECORD:
 SET SM RR SPIKE
 6-20-88, SWH
 SET MAG/WASHER
 4/21/03, DCH



Resurfaced 2002 / 2003

O.D.O.T. DISTRICT 2 SURVEY OFFICE

PERSONNEL

REFERENCE NO. 45

SHEET 1 OF

NOTES HOFFMAN

H.C. BARNHISEL

DATE 4-8-88

ROUTE US 6

R.C. LOSHRKE

WEATHER CLEAR

COUNTY HENRY

TEMP. 40°

TOWNSHIP HARRISON

SECTION 26

T.S. NR 7 E

TYPE MONUMENT P.K. / Washer Set small RR spike

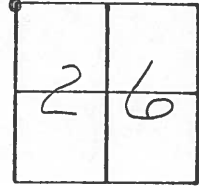
6-20-88 SWA

ON SURFACE - BELOW YES

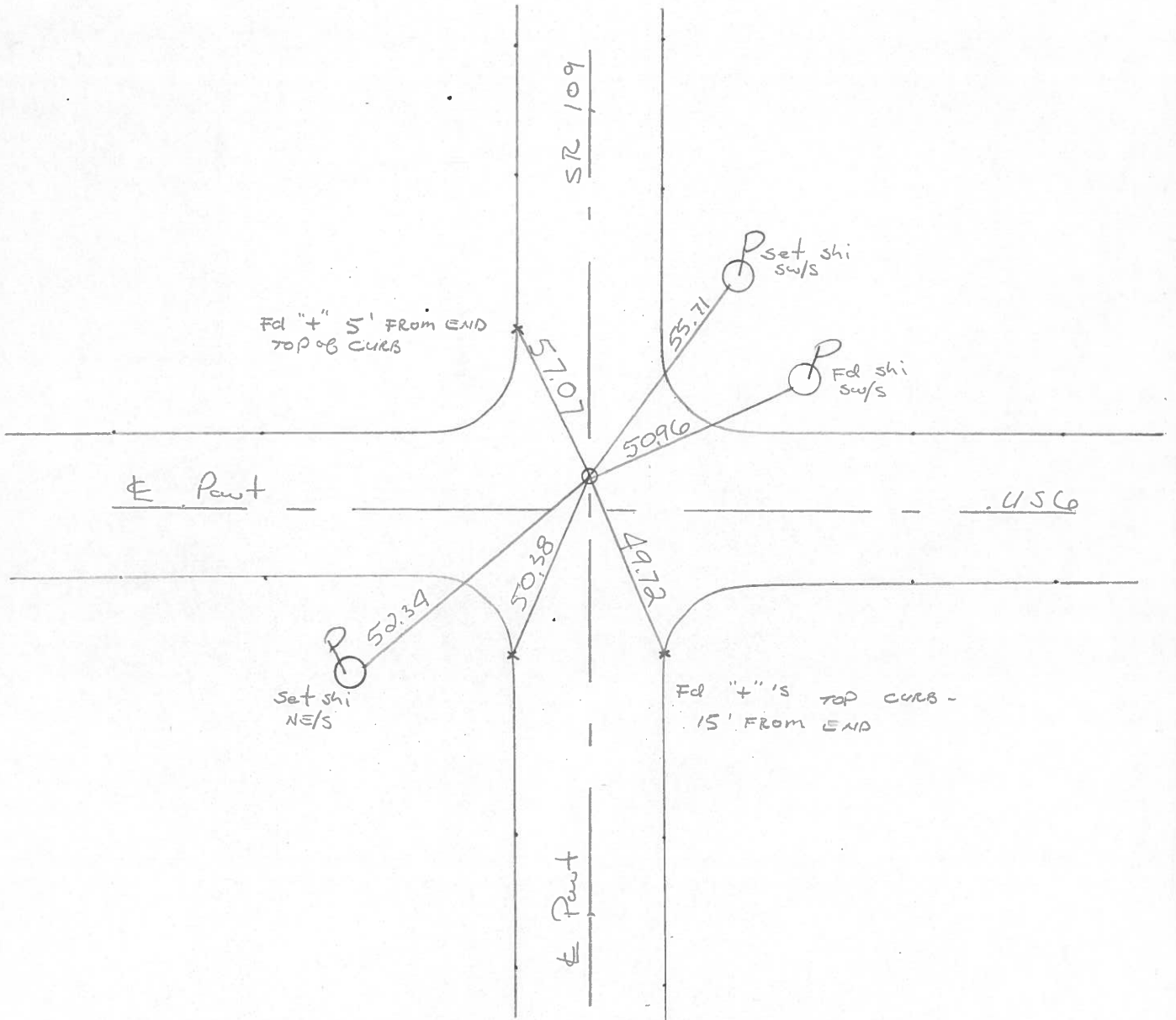
LEFT-~~☉~~ PAV'T. - RIGHT 1.0'

 TO EDGE PAVEMENT ON ☉ & Paint SR 109

S.L.M. US 6 = 937 + 20



1051+77.6



PERSONNEL	TITLE	PERSONNEL	TITLE
BURNSIDE			
SHAW	E.I.T.		

COUNTY HENRY DATE 6-1-71

S. R. U.S. #6 WEATHER CLOUDY

SEC. _____ TEMP. +72°

DESCRIPTION BEGIN POINT CHECK TO HENRY-WOOD Co. LINE JOB NO. _____

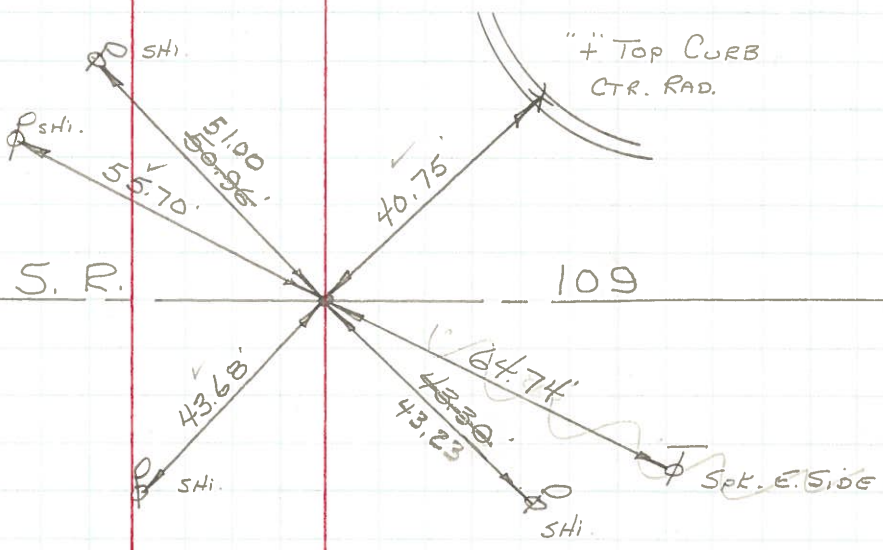
LEFT CENTER LINE RIGHT

45



BRASS MON
2" DEEP

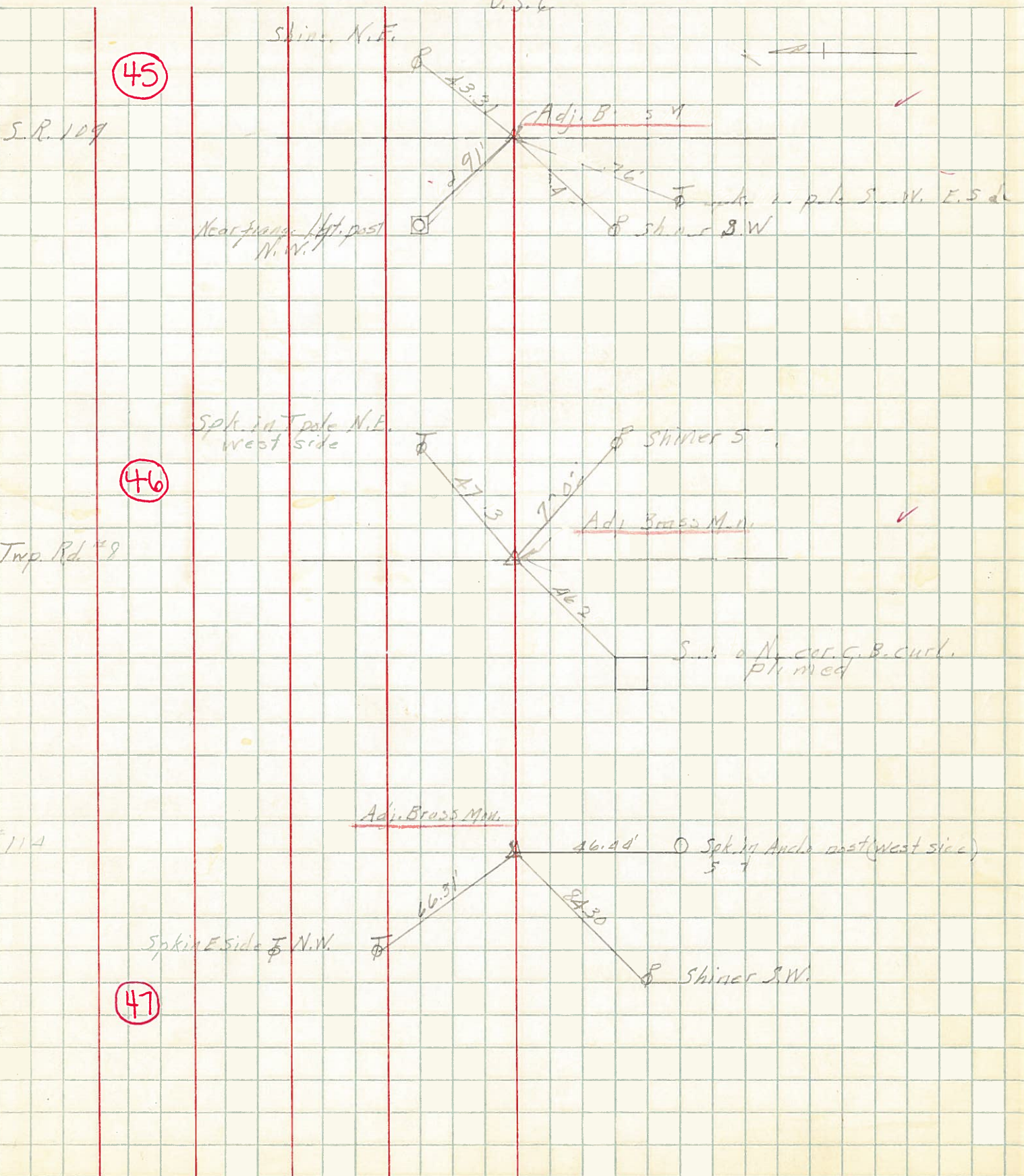
N.W. COR. SEC. 26
HARRISON TWP.



5-10-72

PERSONNEL	TITLE	PERSONNEL	TITLE	COUNTY	DATE
Lawson	notes	Long		Henry	2-
Williams				S. R. 11.5.6	WEATHER
Metzger					
Robinson				SEC.	TEMP.

DESCRIPTION *Top & W turn of 4.40 men.* JOB NO. _____



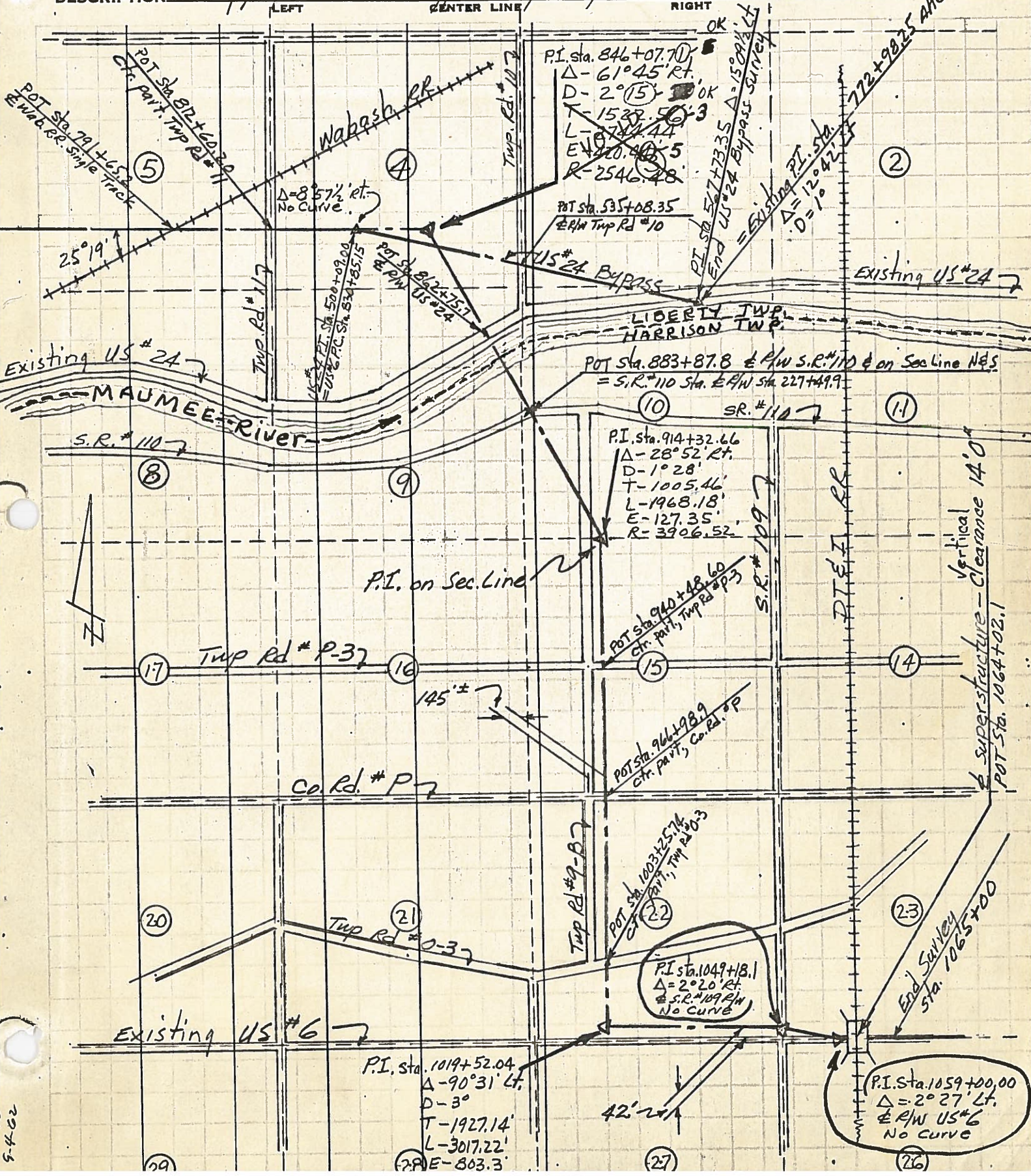
PERSONNEL TITLE PERSONNEL TITLE

COUNTY Henry DATE Jan-Feb 1961

Beach
Ambrister
Knappe
Gunter
Mohler

S. R. US#6 & #24 Bypass WEATHER
SEC. Liberty & Harrison Tups. TEMP.

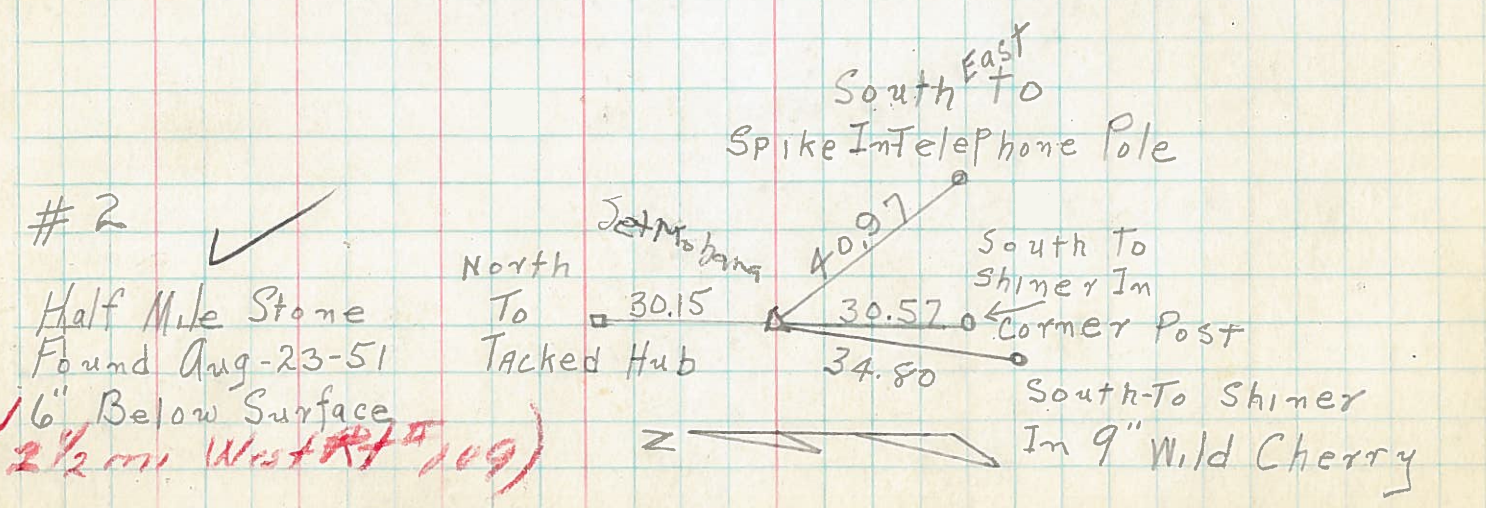
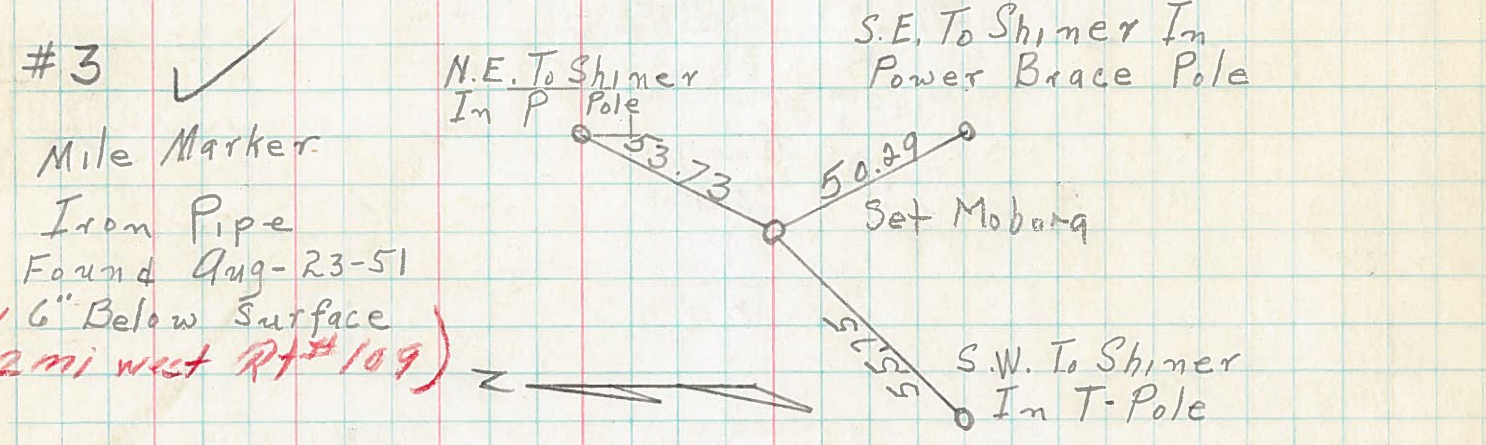
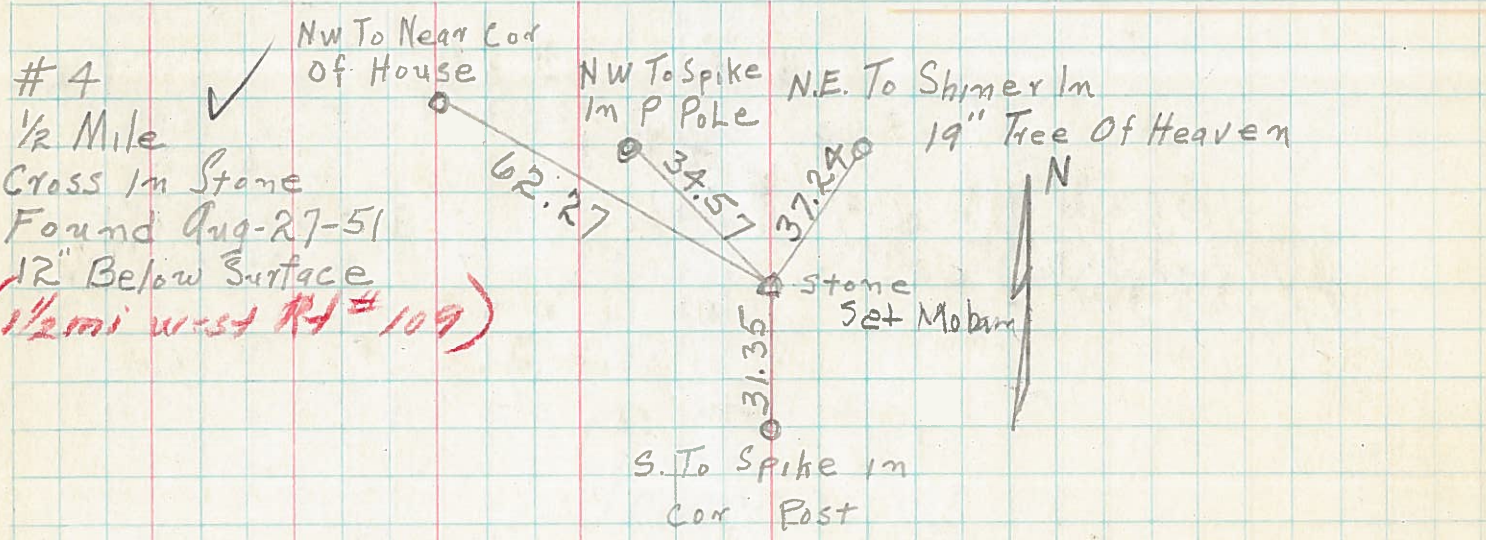
DESCRIPTION Survey proposed US#6 & #24 Bypass superimposed on section lines



5-4-62

PERSONNEL	TITLE	PERSONNEL	TITLE	COUNTY	DATE	WEATHER	TEMP.
Pessefall				Henry	Aug-23-51		
Smith				S. R. # 6			
Carpenter							
Kearnes				SEC.			

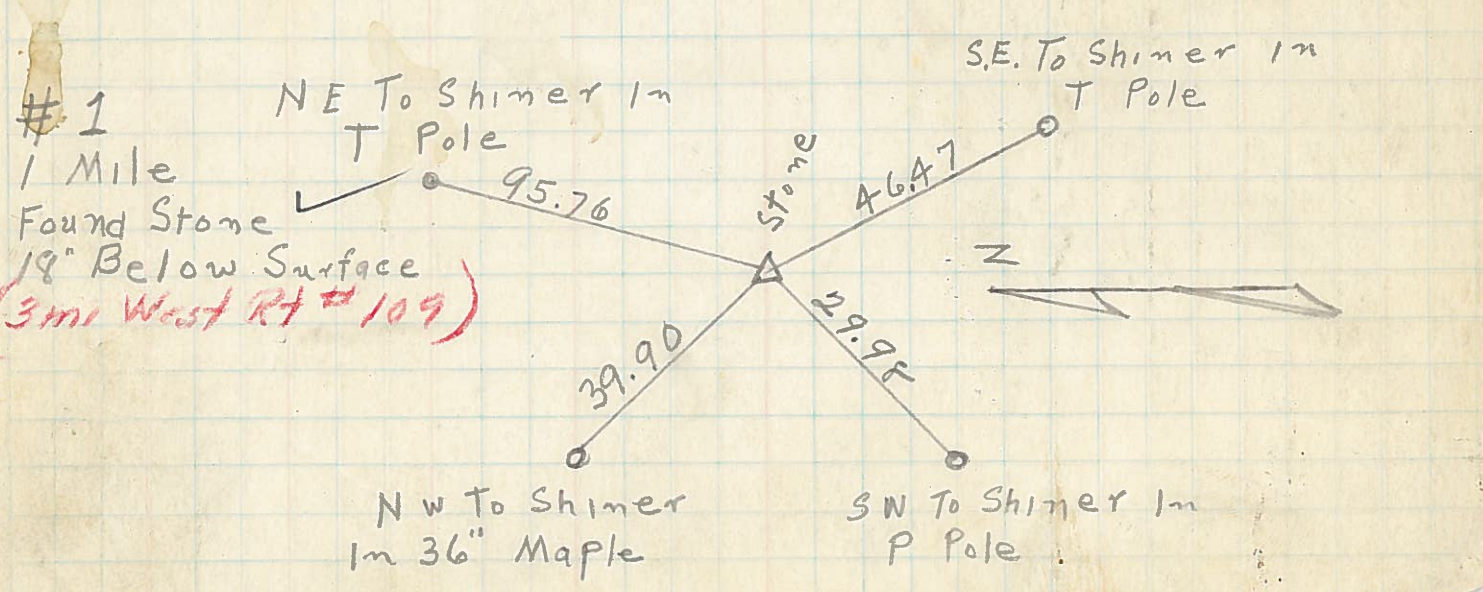
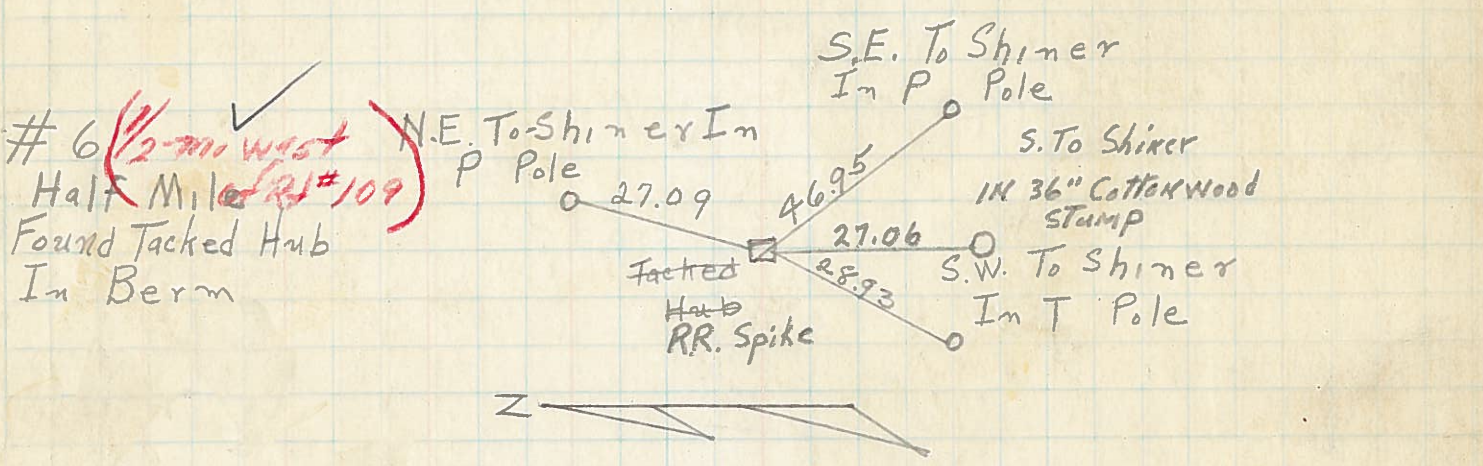
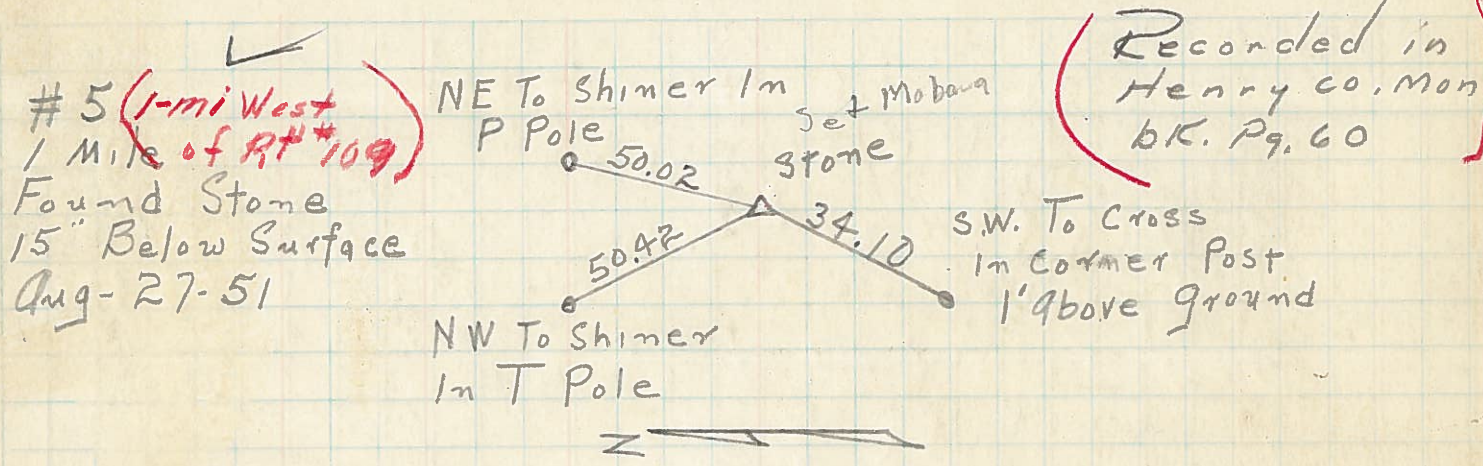
DESCRIPTION Witness Points JOB NO. _____



PERSONNEL	TITLE	PERSONNEL	TITLE
Pesefall			
Smith			
Carpenter			
Kernes			

COUNTY Henry DATE Aug-23-51
 S. R. # 6 WEATHER _____
 SEC. Q & P-1 TEMP. _____

DESCRIPTION Witness Points JOB NO. _____



PERSONNEL TITLE PERSONNEL TITLE

Lovys

COUNTY He

DATE 2-28-58

S. R. 6

WEATHER

SEC. Relocation over Pt. # 384

TEMP.

DESCRIPTION

Curve DATA

LEFT

CENTER LINE

RIGHT

JOB NO.

P.I. = Sta. 4+36.12

P.C. = Sta. 1+79.82

2

3

4

5

6

P.T. = Sta. 6+92.32

0°-00'

0°-02'

0°-10'

0°-18'

0°-26'

0°-34'

0°-41'

$\Delta = 1^\circ - 22' \text{ RT.}$

$D = 0^\circ - 16'$

$R = 21486.2'$

$T = 256.30'$

$L = 512.50'$

$E = 1.53'$