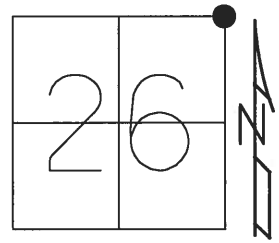


**O.D.O.T. DISTRICT 2 SURVEY OFFICE (USE ONLY)**

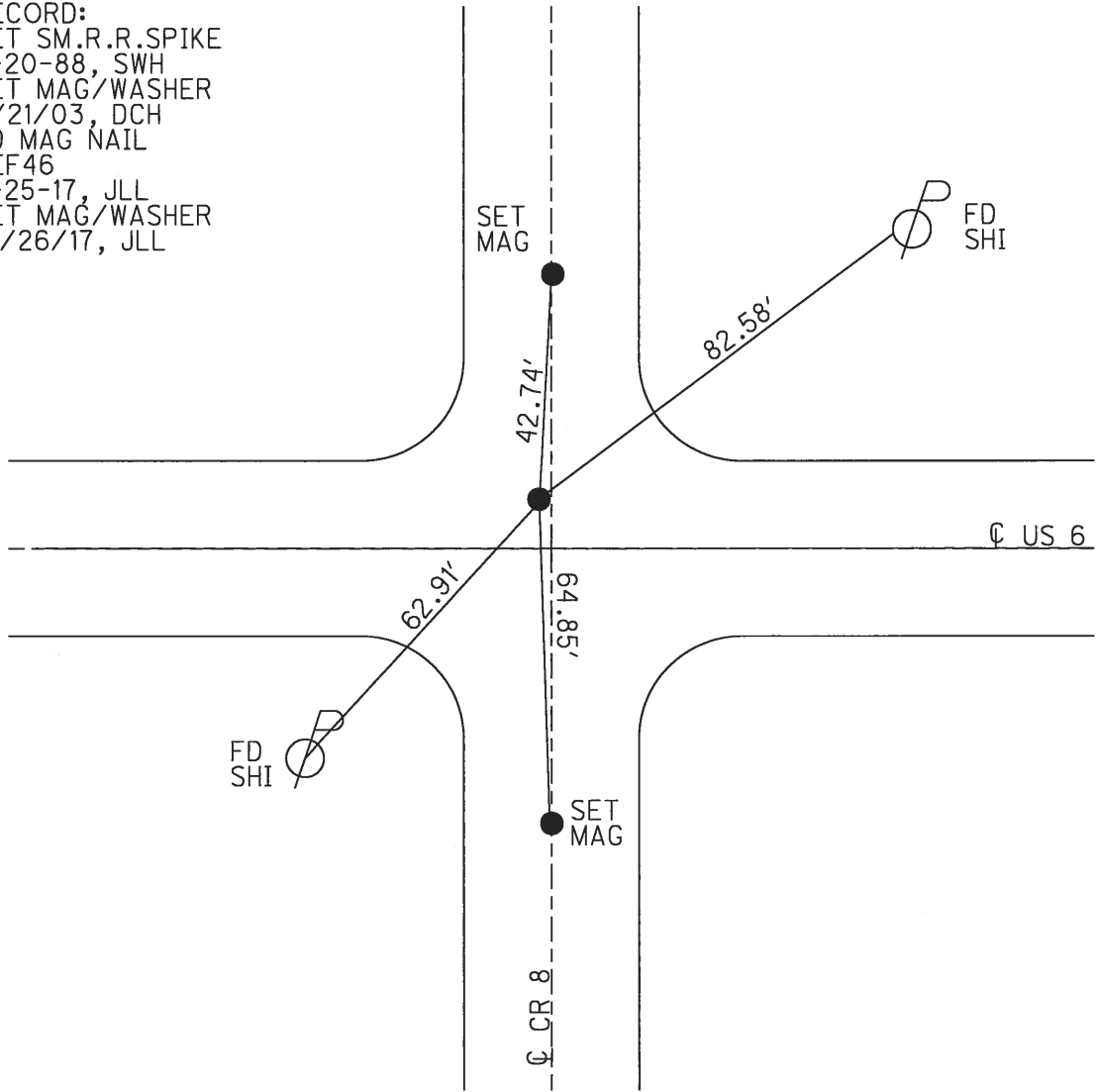
PERSONNEL \_\_\_\_\_ REFERENCE NO. 46 SHEET 8 OF 24  
 NOTES RHOADES DATE 4/24/17 ROUTE US 6  
 H.C. LEU WEATHER SUNNY COUNTY HENRY  
 R.C. HELDMAN TEMP. 55° TOWNSHIP HARRISON  
 \_\_\_\_\_ SECTION 26  
 \_\_\_\_\_ T 5 N R 7 E

TYPE MONUMENT MAG/WASHER  
 ON SURFACE - ~~BELOW~~ ON  
 LEFT - ☉ PAV'T - ~~RIGHT~~ 4.7'  
 \_\_\_\_\_ TO \_\_\_\_\_ EDGE PAVEMENT  
 S.L.M. 1102+50.73



GRID: NORTHING: 624506.1951 EASTING: 1551586.042

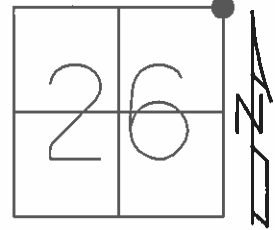
RECORD:  
 SET SM.R.R.SPIKE  
 6-20-88, SWH  
 SET MAG/WASHER  
 4/21/03, DCH  
 FD MAG NAIL  
 REF46  
 4-25-17, JLL  
 SET MAG/WASHER  
 10/26/17, JLL



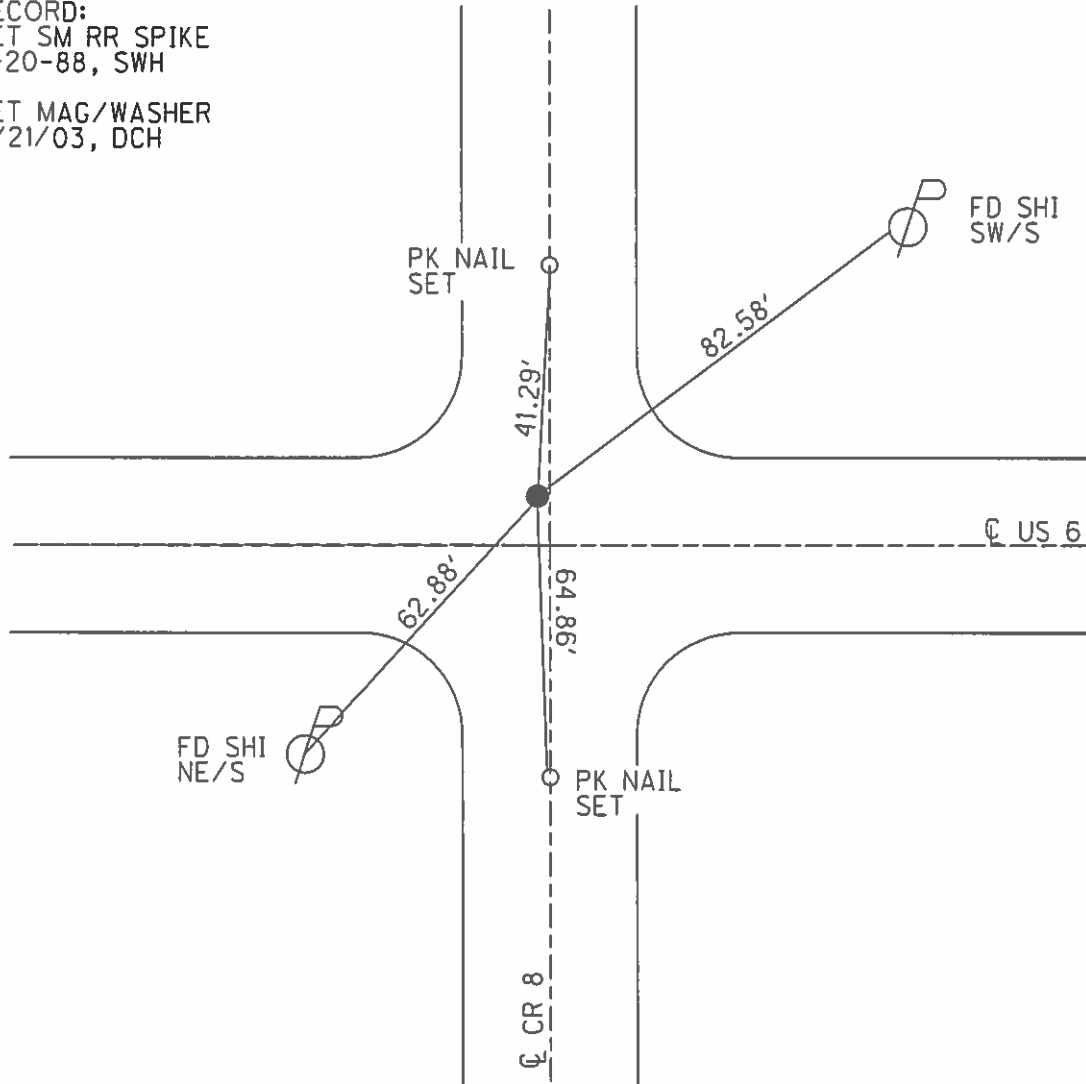
O.D.O.T. DISTRICT 2 SURVEY OFFICE (USE ONLY)

PERSONNEL \_\_\_\_\_ REFERENCE NO. 46 SHEET 3 OF 18  
 NOTES HOMAN DATE 7/18/02 ROUTE US 6  
 H.C. ROUSOS WEATHER SUNNY COUNTY HENRY  
 R.C. BEAUMONT TEMP. 90° TOWNSHIP HARRISON  
CHLEBECK SECTION 26  
 T 5 N R 7 E

TYPE MONUMENT SM.R.R.SPIKE  
 ON SURFACE - ~~BELOW~~ ON \_\_\_\_\_  
~~LEFT~~ -  $\odot$  PAV'T - RIGHT 4.4'  
 - TO - EDGE PAVEMENT  
 S.L.M. 1105+10.4  
 GRID: NORTHING: \_\_\_\_\_ EASTING: \_\_\_\_\_



RECORD:  
 SET SM RR SPIKE  
 6-20-88, SWH  
 SET MAG/WASHER  
 4/21/03, DCH



# O.D.O.T. DISTRICT 2 SURVEY OFFICE

PERSONNEL \_\_\_\_\_

REFERENCE NO. 46

SHEET 3 OF \_\_\_\_\_

NOTES Hoffman

H.C. Barnhisel

DATE 4-8-88

ROUTE US 6

R.C. Loeppke

WEATHER Clear

COUNTY HENRY

TEMP. 40°

TOWNSHIP HARRISON

SECTION 26

T S N R 7 E

TYPE MONUMENT P.K. Nail

Set SMALL RR SPICES  
6-20-88 SWM

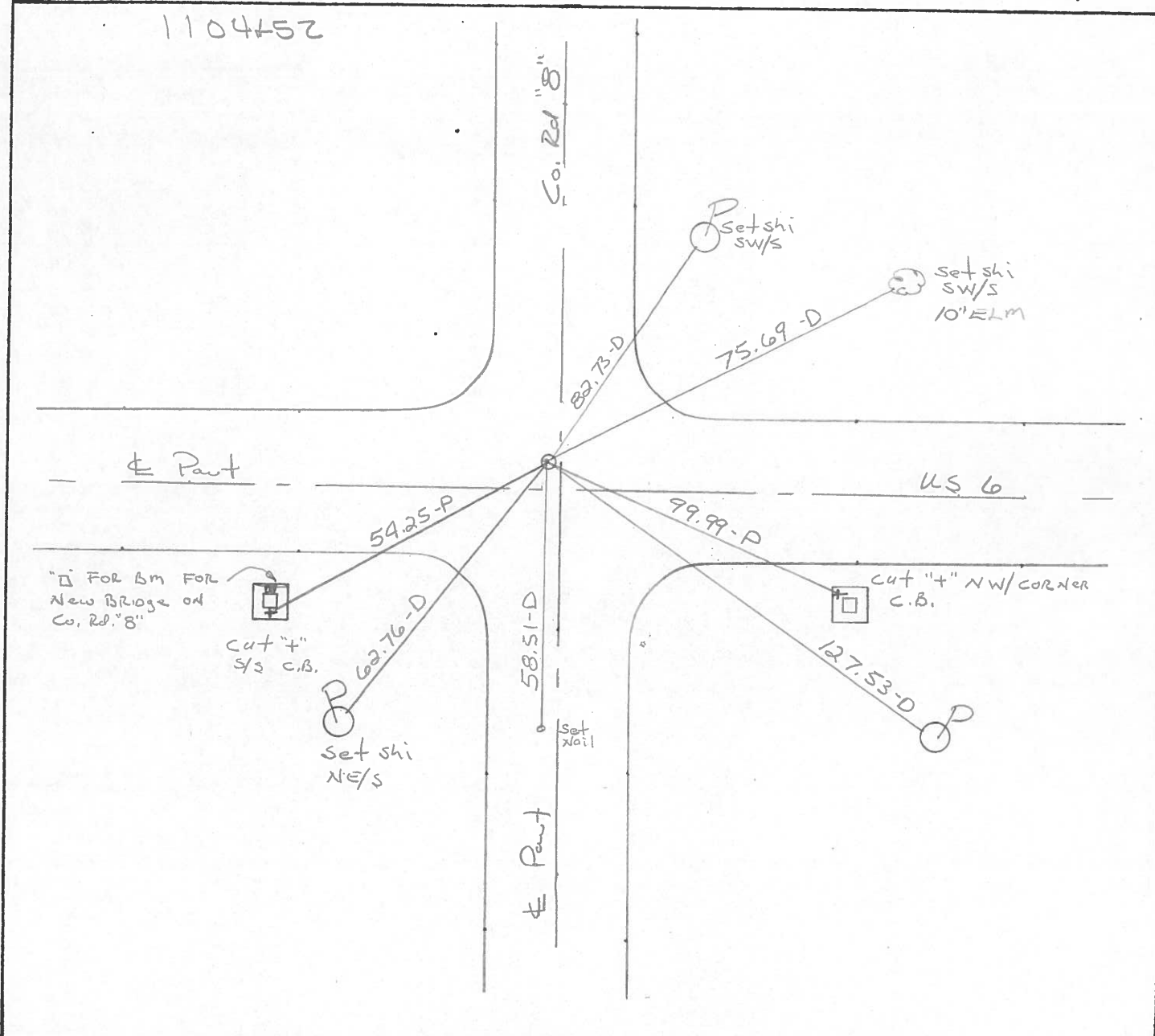
ON SURFACE - ~~BELOW~~ YES

LEFT- & PAV'T. - ~~RIGHT~~ 4.4

7.4 TO LT EDGE PAVEMENT 0.5' West of Pavt Co. Rd B South

S.L.M. 989+94

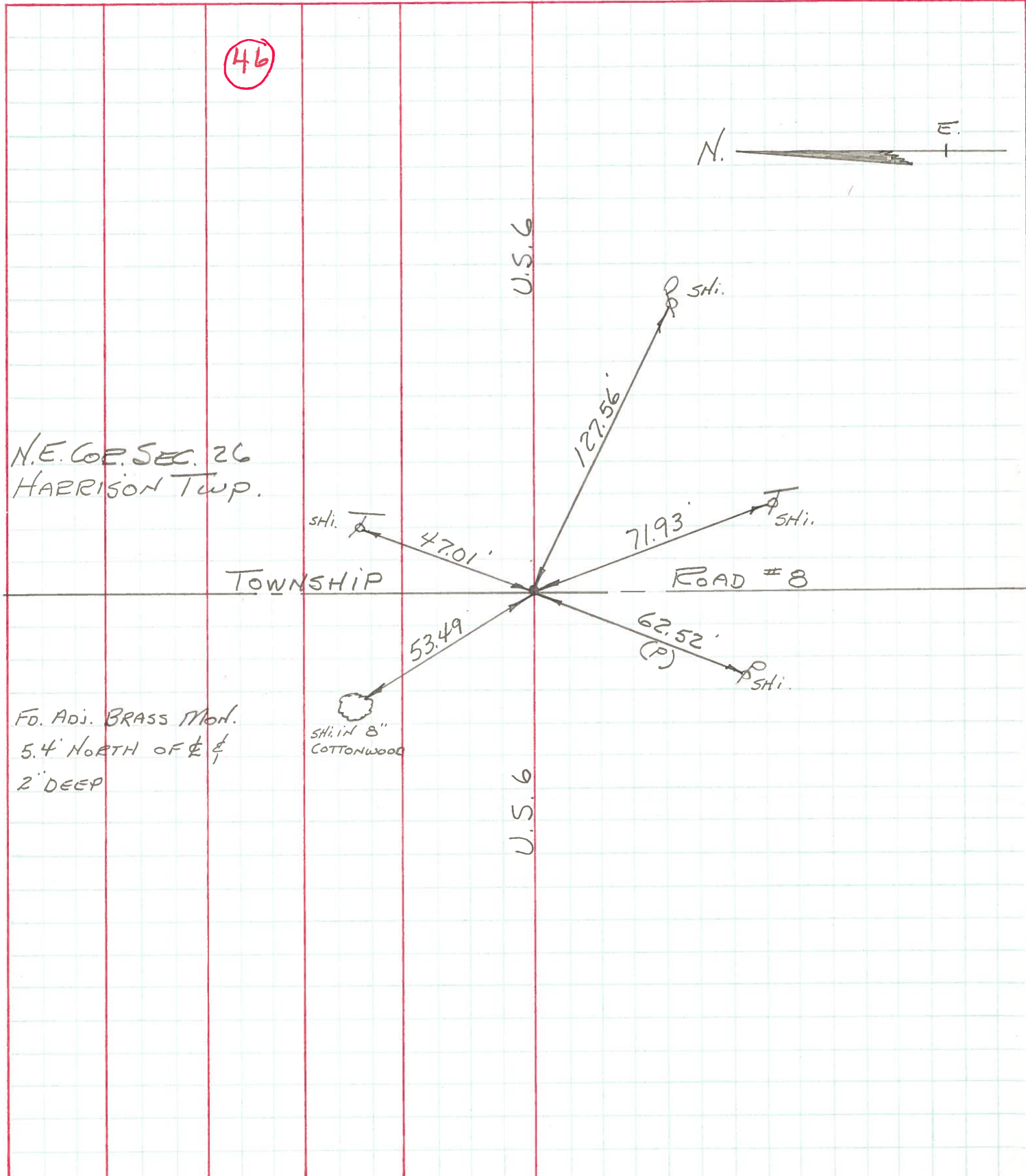
23	24
26	25



PERSONNEL	TITLE	PERSONNEL	TITLE
BURNSIDE			
BOWERS			

COUNTY HENRY DATE 11-2-72  
 S. R. U.S. 6 WEATHER CLEARING  
 SEC. \_\_\_\_\_ TEMP. +65°

DESCRIPTION \_\_\_\_\_ LEFT \_\_\_\_\_ CENTER LINE \_\_\_\_\_ RIGHT \_\_\_\_\_ JOB NO. \_\_\_\_\_



PERSONNEL	TITLE	PERSONNEL	TITLE
Lawson	notes	Long	
Williams			
Metzger			
Robinson			

COUNTY Henry DATE 9-12-57  
 S. R. 1156 WEATHER cloudy rain  
 SEC. \_\_\_\_\_ TEMP. 75°

DESCRIPTION Location & Witness of Monuments JOB NO. \_\_\_\_\_

