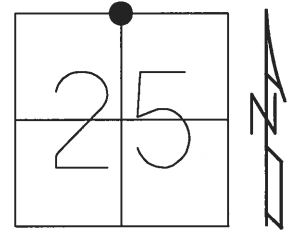


O.D.O.T. DISTRICT 2 SURVEY OFFICE (USE ONLY)

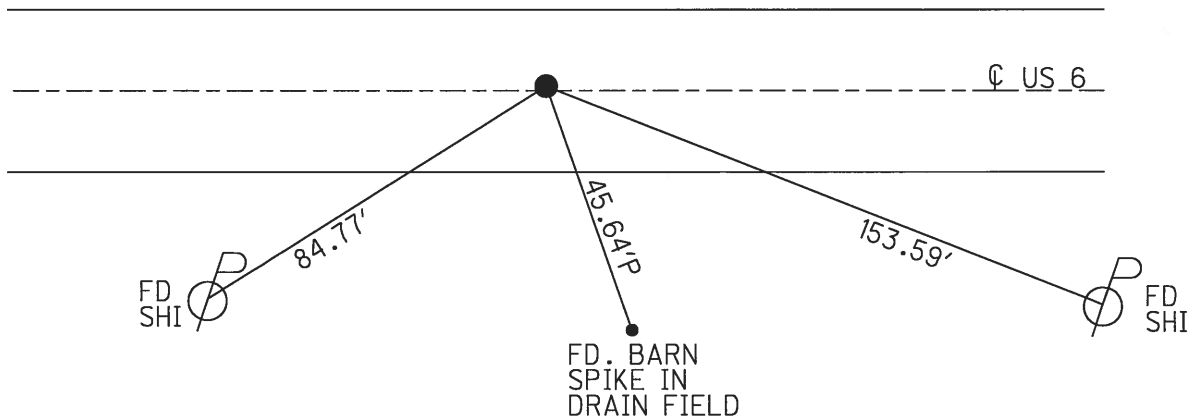
PERSONNEL _____ REFERENCE NO. 47 SHEET 9 OF 24
 NOTES RHOADES DATE 4/24/17 ROUTE US 6
 H.C. LEU WEATHER SUNNY COUNTY HENRY
 R.C. HELDMAN TEMP. 55° TOWNSHIP HARRISON
 _____ SECTION 25
 _____ T 5 N R 7 E

TYPE MONUMENT _____ MAG/WASHER
 ON SURFACE - ~~BELOW~~ _____ ON _____
~~LEFT~~ - \odot PAV'T - RIGHT _____ 0.5'
 _____ 12' TO RT _____ EDGE PAVEMENT
 S.L.M. _____ 1129+11.71



GRID: NORTHING: 624461.4353 EASTING: 1554246.626

RECORD:
 SET MAG/WASHER
 9-20-02, DCH
 FD MAG NAIL
 REF 47
 4-24-17, JLL
 SET MAG/WASHER
 10/26/17, JLL



O.D.O.T. DISTRICT 2 SURVEY OFFICE (USE ONLY)

PERSONNEL

REFERENCE NO. 47

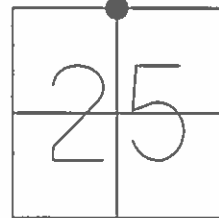
SHEET 4 OF 18

NOTES HOMAN
 H.C. ROUSOS
 R.C. BEAUMONT
CHLEBECK

DATE 7/18/02
 WEATHER SUNNY
 TEMP. 80°

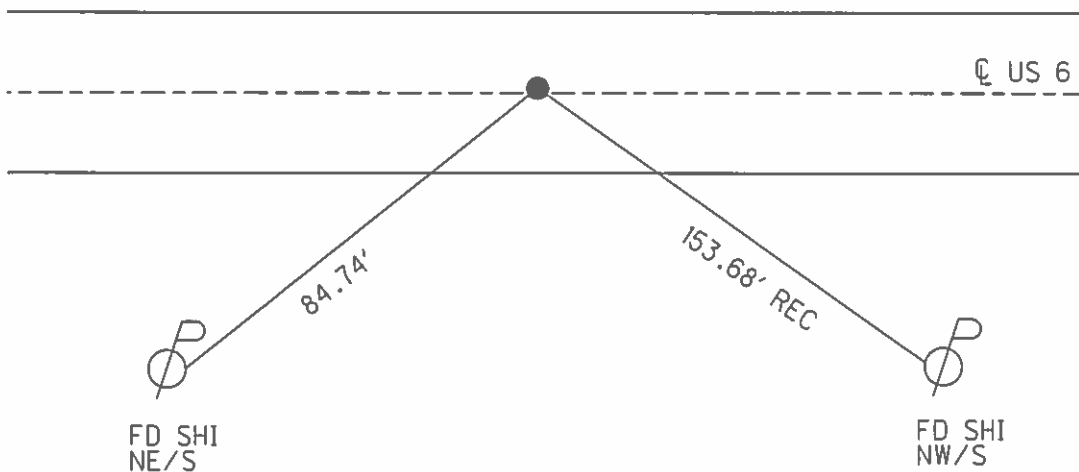
ROUTE US 6
 COUNTY HENRY
 TOWNSHIP HARRISON
 SECTION 25
T 5 N R 7 E

TYPE MONUMENT SM.R.R.SPIKE
 ON SURFACE - ~~BELOW~~ ON
 LEFT - ☉ PAV'T - RIGHT ON
12' TO RT EDGE PAVEMENT
 S.L.M. 1131+14



GRID: NORTHING: _____ EASTING: _____

SET MAG/WASHER
 9-20-02, DCH



O.D.O.T. DISTRICT 2 SURVEY OFFICE

PERSONNEL _____

REFERENCE NO. 47

SHEET 4 OF _____

NOTES Hoffman

H.C. BARNHISEL

R.C. LOSHAK

DATE 4-8-88

WEATHER CLEAR

TEMP. 40°

ROUTE US 60

COUNTY HENRY

TOWNSHIP HARRISON

SECTION 25

T. S N. R 7 E.

TYPE MONUMENT P.K. Nail

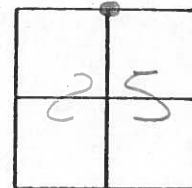
*Set SMALL RR SPIKE
6-20-88 SWK*

ON SURFACE - BELOW YES

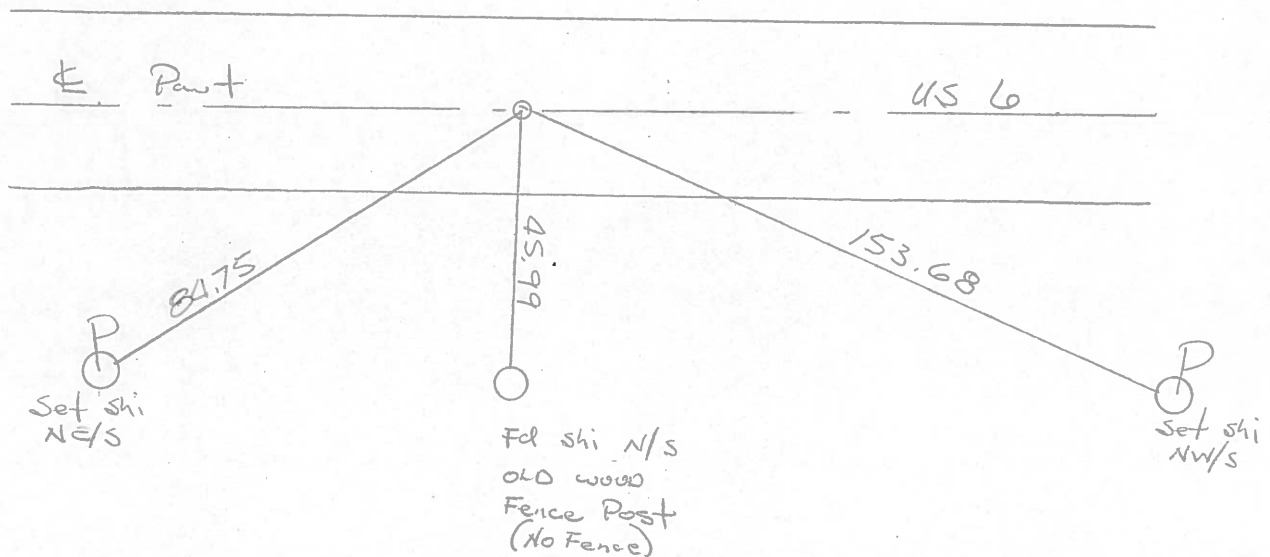
LEFT - ☉ PAV'T. - RIGHT YES

12.1 TO 2+ EDGE PAVEMENT

S.L.M. 1016 + 56



1131 + 14



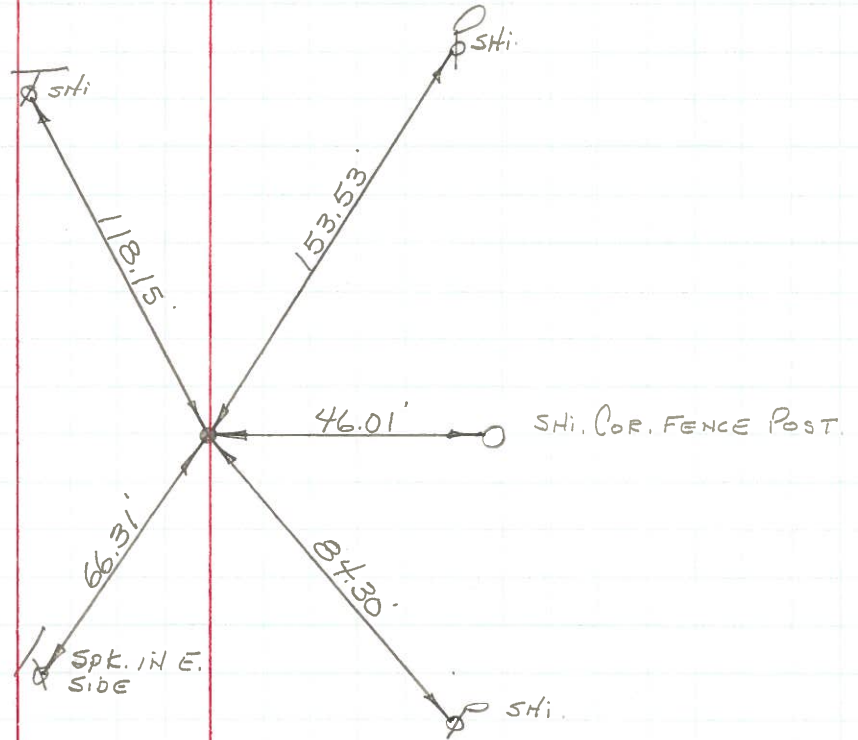
PERSONNEL	TITLE	PERSONNEL	TITLE
BURNSIDE			
SMITH			
HOLCOMBE			
ROCCHINI	E.I.T.		

COUNTY HENRY DATE 6-7-71
 S. R. U.S. #6 WEATHER CLEAR
 SEC. _____ TEMP. +80°

DESCRIPTION _____ LEFT _____ CENTER LINE _____ RIGHT _____ JOB NO. _____

47

BRASS MON 1" BELOW SURFACE
 1/2 mi. ± E. OF TWP. RD. #8
 N. 1/4 COR. SEC. 25
 HARRISON TWP.



PERSONNEL TITLE PERSONNEL TITLE

Lawson Ante Long
Williams
Metzger
Robinson

COUNTY Henry DATE 9-12-57

S. R. 11 S. 6 WEATHER cloudy rain

SEC. _____ TEMP. 75°

DESCRIPTION Location & Witness of Monuments JOB NO. _____

LEFT CENTER LINE RIGHT

